

**FALL ENROLLMENT REPORT**  
**UNIVERSITY OF HAWAI'I**  
**FALL 2005**

Institutional Research Office  
University of Hawai'i  
April 2006

File Reference: Management and Planning Support Folder, Enrollment

Reports available online at: <http://www.hawaii.edu/iro/maps.htm>

## THE UNIVERSITY OF HAWAII HEADCOUNT ENROLLMENT, FALL 2005

Headcount enrollment at the University of Hawai'i measured 50,157 in Fall 2005, a slight decrease from the previous fall semester (Tables 1 & 2 and Figures 1, 2 & 3). Full-Time Equivalent (FTE) enrollment also decreased slightly, to 34,569 (Table 3). These measures mark the end of four consecutive years of growth in fall semester enrollment across the University of Hawai'i system, and are comparable to the levels of ten years earlier.

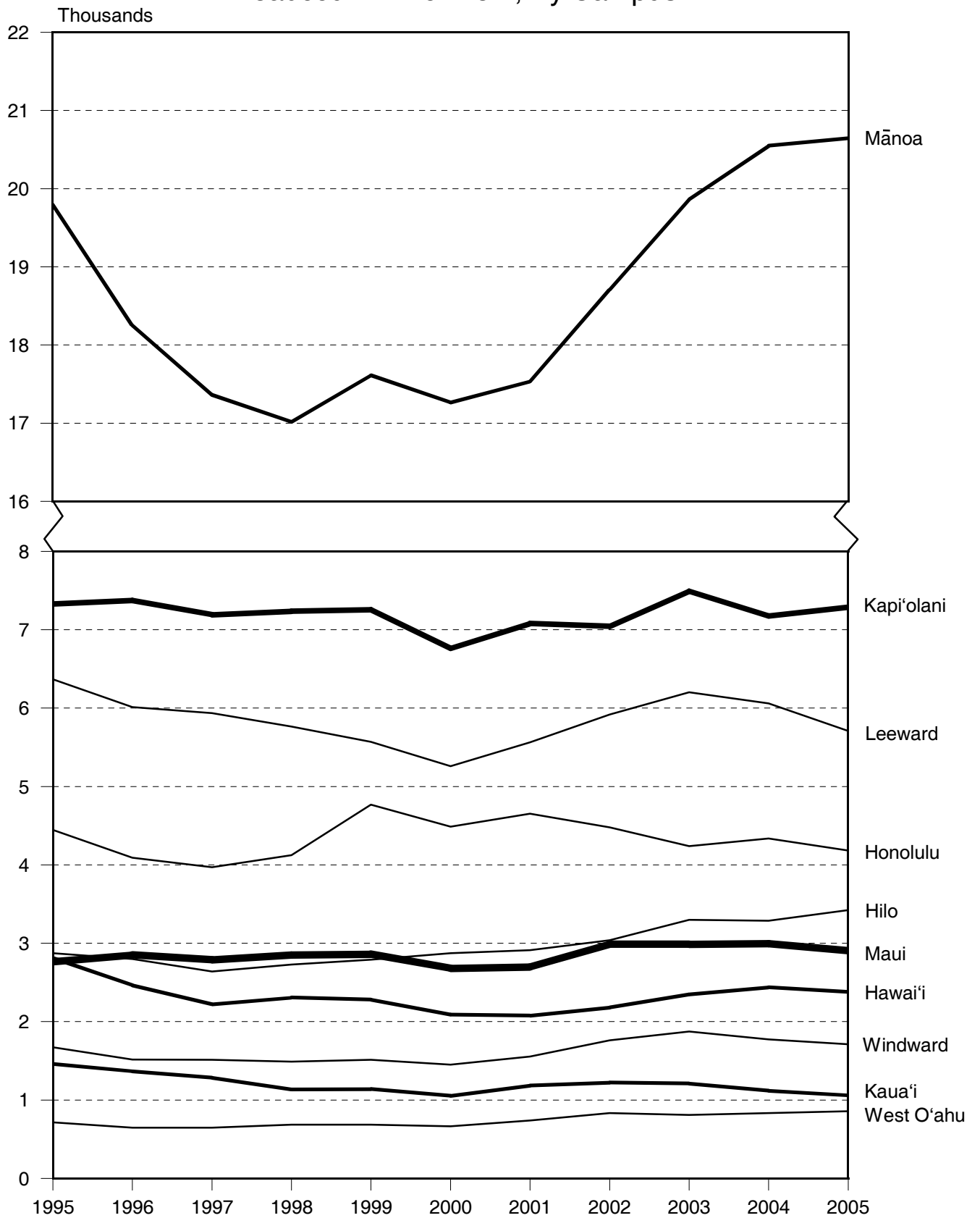
UH Hilo posted the largest enrollment increase in percentage terms of any campus in Fall 2005 at 4.1% (Table 2). UH-West O'ahu was next at 2.9%, followed by Kapi'olani CC (1.6%) and UH Mānoa (0.5%). Enrollment declined at the remaining campuses: Hawai'i CC (-2.6%), Maui CC (-3.1%), Honolulu CC (-3.5%), Windward CC (-3.5%), Kaua'i CC (-5.2%) and Leeward CC (-5.8%).

In 2002-03, the University of Hawai'i campuses migrated to a new student registration system. In Fall 2005, the University of Hawai'i Institutional Research Office completed development of the IRO Base table. Breakouts for certain items in the report tables, such as citizenship and permanent address, have changed. The Hawaiian Ancestry measure is new. Other items may show discontinuities due to changes in data processing. The reader is advised to exercise caution when examining trends or percentage data over time.

Other Fall 2005 enrollment highlights:

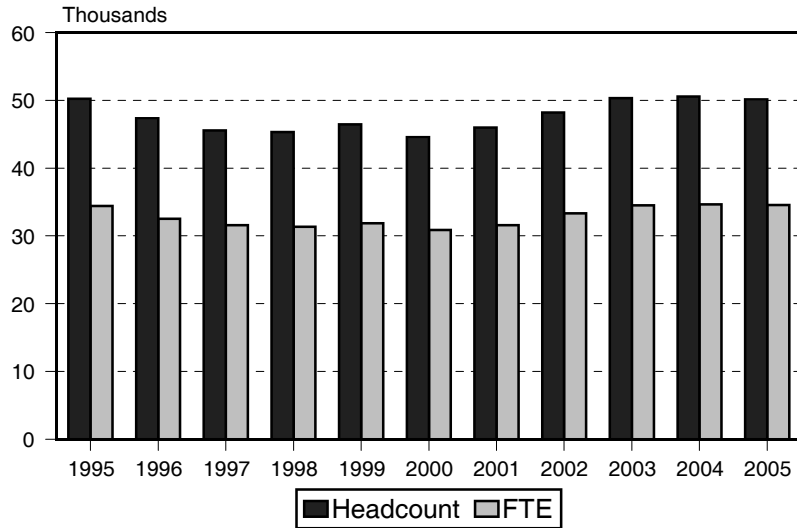
- Western Undergraduate Exchange enrollment at UH Mānoa and UH Hilo has leveled off after several years of rapid growth (Table 5 & Figure 7).
- Enrollment of students from the U.S. mainland, as measured by permanent home address, has grown from 1,766 in Fall 1997 to 5,114 in Fall 2005, an increase of 190% (Figure 9). In Fall 1997, mainland students accounted for 3.9% of total enrollment; by Fall 2005, the figure had grown to 10.2%.
- The Hawaiian Ancestry characteristic is a new item, beginning in Fall 2005. Students were asked on the application to indicate Hawaiian ancestry. The figures given in Tables 4, 5 and 7 show the aggregate number of students who indicated "Yes" to Hawaiian ancestry or who selected Hawaiian ethnicity. The total for the UH system measured 14.6% of enrollment in Fall 2005.
- The mean age of students measured 25.5 years in Fall 2005, the lowest mean age since Fall 1984 (Figure 10). Full-Time enrollment was unchanged from a year ago at 55.9% of enrollment (Figure 11), while the enrollment gap between men and women closed slightly (Table 5 & Figure 12).
- With the migration to the Banner registration system, ethnic reporting has been expanded to include additional categories (Tables 5, 6 and 7). However, only incoming students are included in these new categories; students already enrolled are shown under the ethnic category previously selected. The UH student body is ethnically diverse and continues to diversify (Figure 13).

Figure 1  
 University of Hawai'i  
 Headcount Enrollment, By Campus

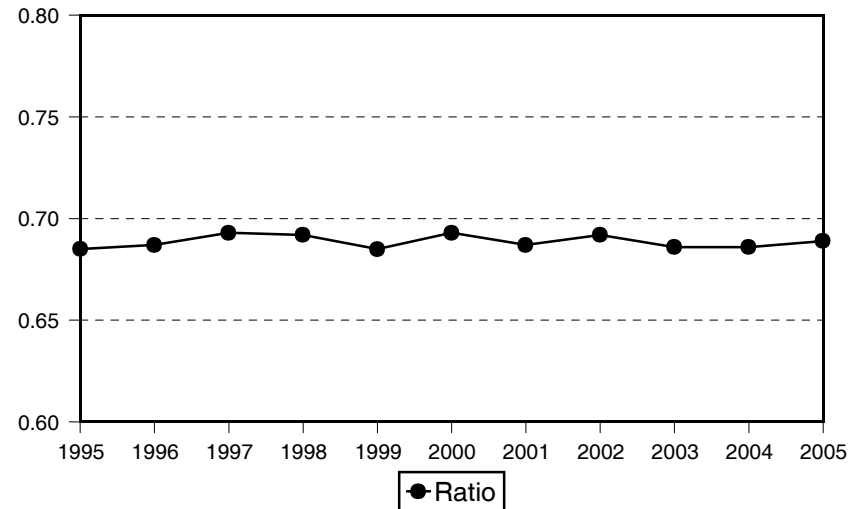


# University of Hawai'i, All Campuses, Fall Semesters

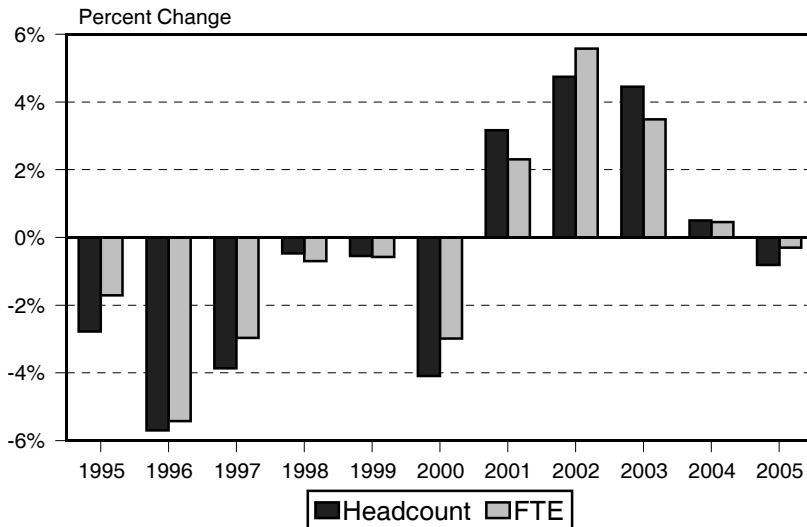
**Figure 2**  
Headcount and FTE Enrollment



**Figure 4**  
FTE / Headcount Ratio

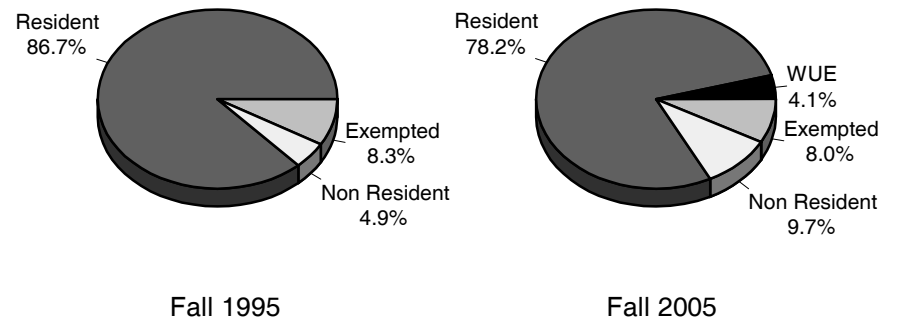


**Figure 3**  
Percentage Change in Enrollment



Percentage change for Fall 1999 excludes continuing education credit enrollment.

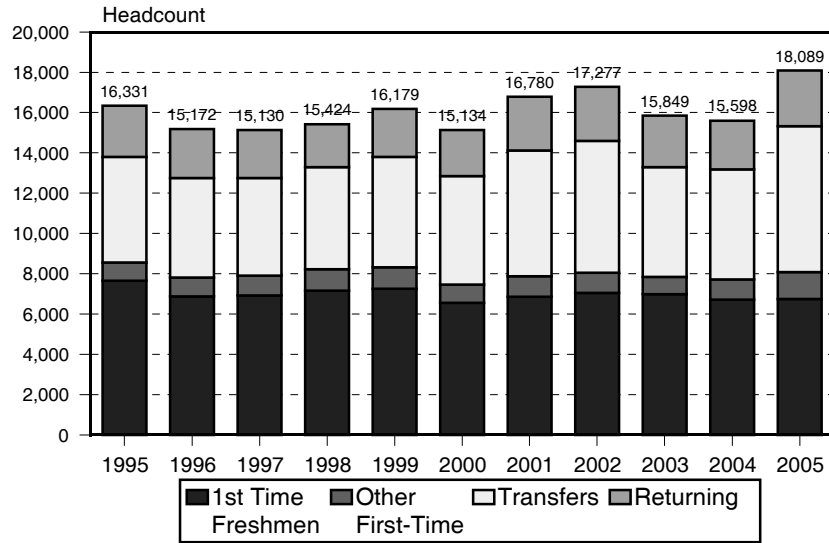
**Figure 5**  
Enrollment by Tuition Status



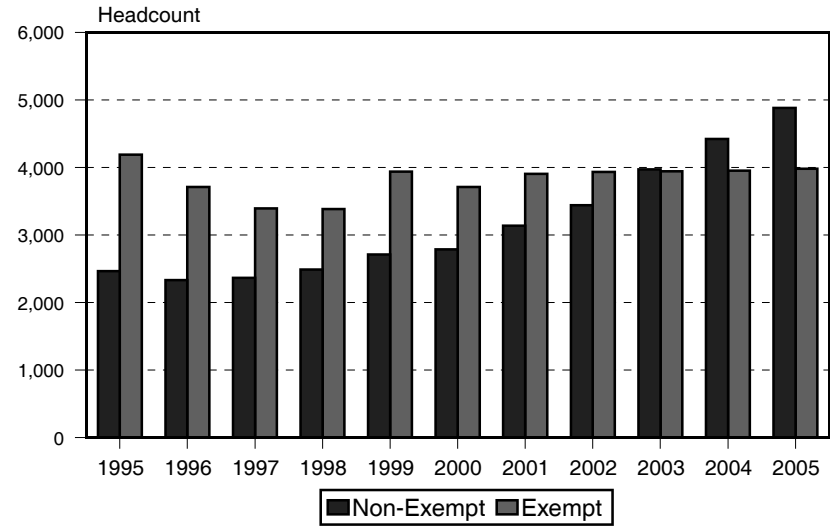
Western Undergraduate Exchange (WUE) was added in Fall 1997.

# University of Hawai'i, All Campuses, Fall Semesters

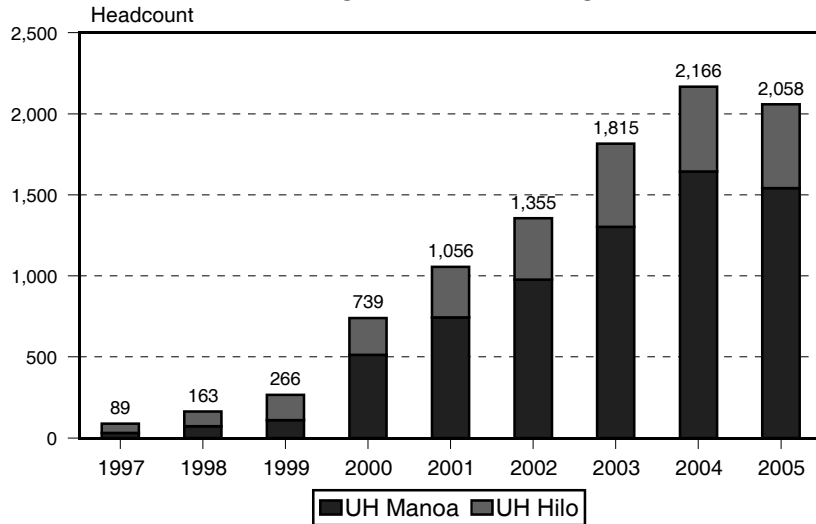
**Figure 6**  
Entering Undergraduate Enrollment



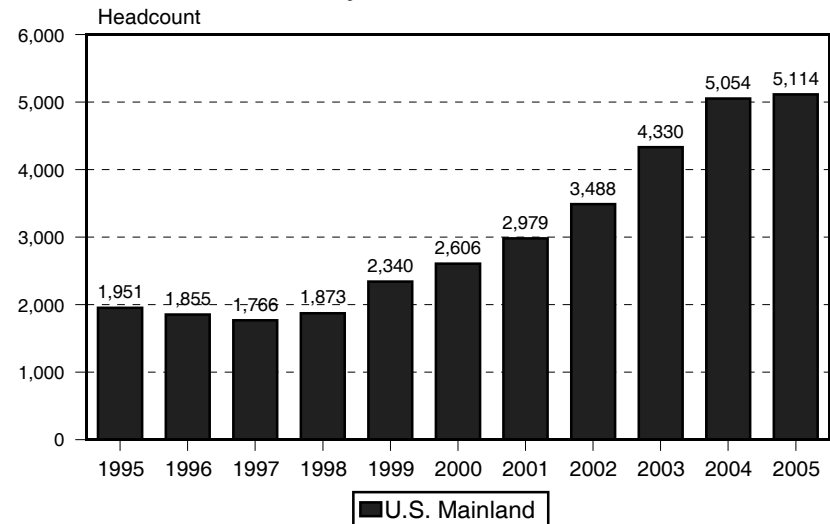
**Figure 8**  
Non-Resident Enrollment



**Figure 7**  
Western Undergraduate Exchange Enrollment

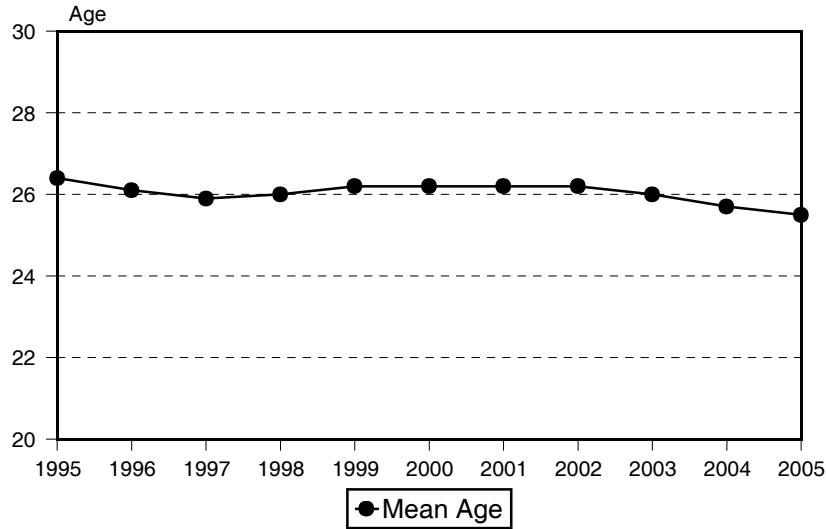


**Figure 9**  
Enrollment by Permanent Home Address

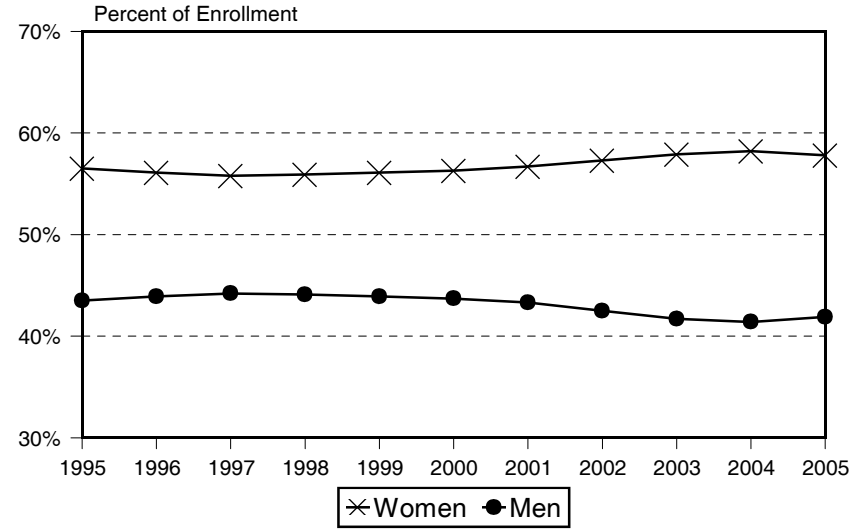


# University of Hawai'i, All Campuses, Fall Semesters

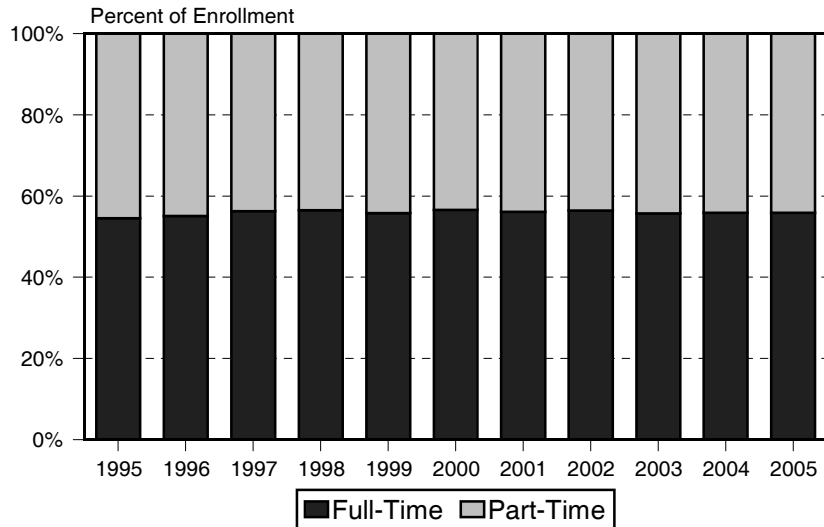
**Figure 10**  
Mean Age



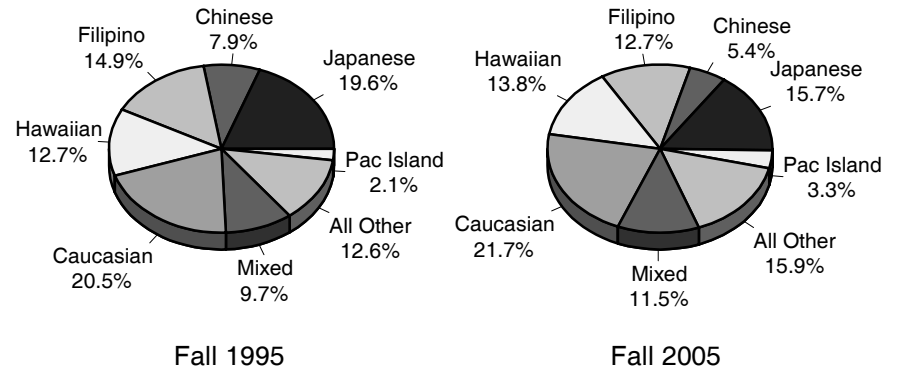
**Figure 12**  
Enrollment by Gender



**Figure 11**  
Enrollment By Attendance Status

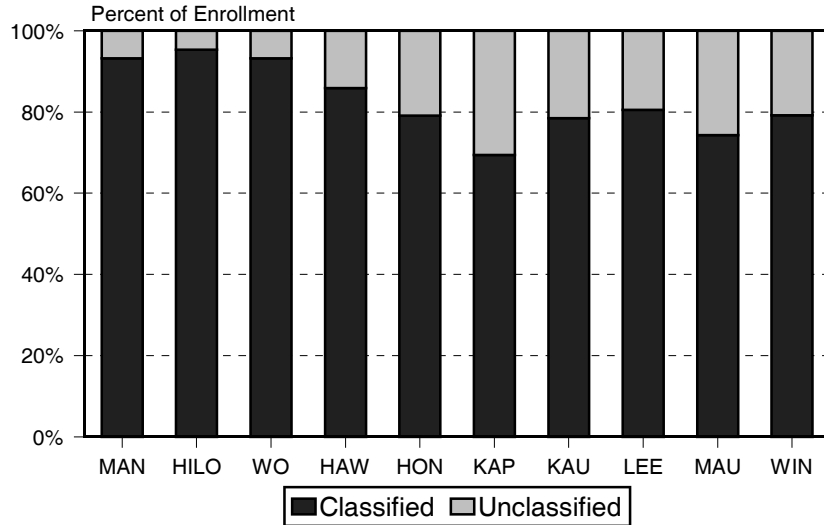


**Figure 13**  
Enrollment by Ethnicity

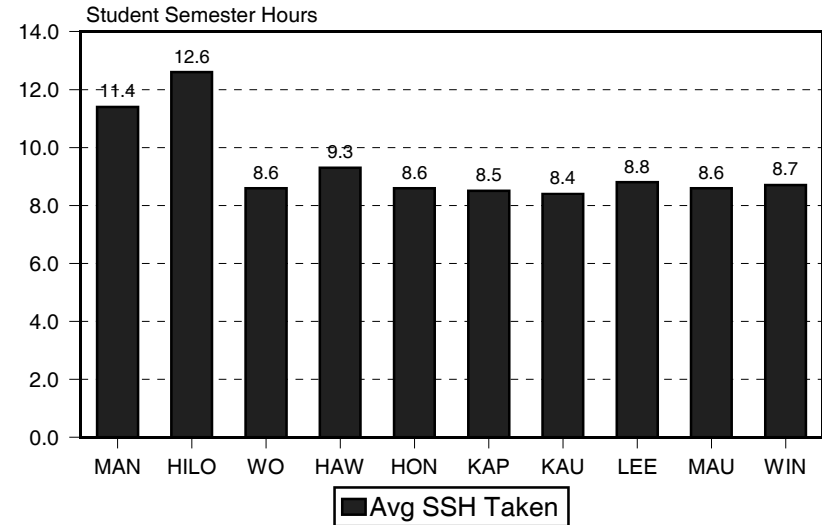


# University of Hawai'i, Selected Data by Campus

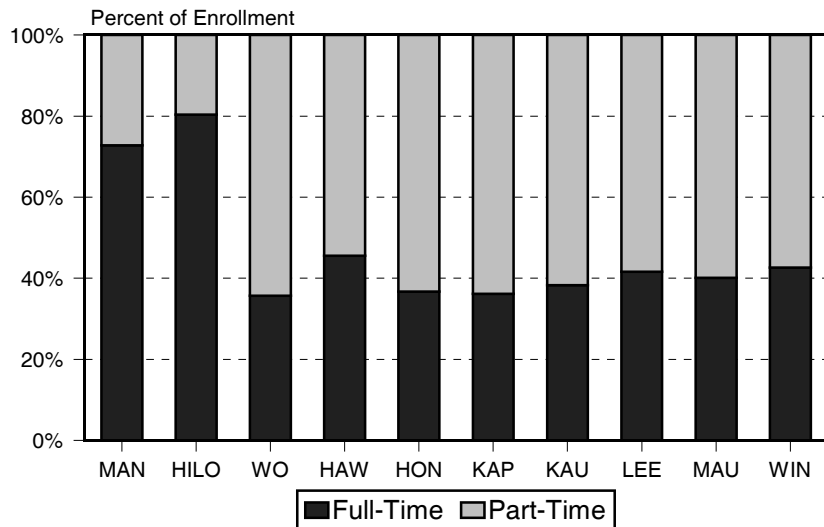
**Figure 14**  
Enrollment By Classified / Unclassified



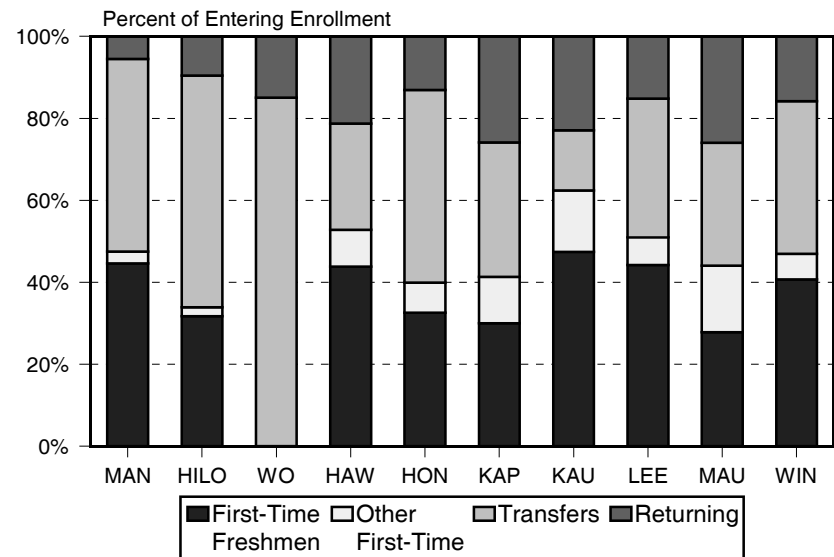
**Figure 16**  
Average SSH Taken Per Student



**Figure 15**  
Enrollment By Attendance Status



**Figure 17**  
Enrollment of Entering Undergraduate Students



**TABLE 1**  
**HEADCOUNT ENROLLMENT OF CREDIT STUDENTS**  
**UNIVERSITY OF HAWAI'I**  
**FALL 2005**

CAMPUS	HEADCOUNT ENROLLMENT					DAY HEADCOUNT	CONTINUING EDUCATION 2/
	Total Headcount 1/ No.	V%	Regular Students	Special Subtotal	Early Admit		
UH SYSTEM TOTAL .....	50,157	100.0%	49,763	394	394	48,914	1,740
UH AT MĀNOA .....	20,644	41.2%	20,643	1	1	19,570	1,473
UH AT HILO .....	3,422	6.8%	3,405	17	17	3,392	111
UH-WEST O'AHU .....	858	1.7%	858			858	
UH COMMUNITY COLLEGES ....	25,233	50.3%	24,857	376	376	25,094	156
Hawai'i .....	2,377	4.7%	2,297	80	80	2,377	
Honolulu .....	4,183	8.3%	4,124	59	59	4,044	156
Kapi'olani .....	7,289	14.5%	7,240	49	49	7,289	
Kaua'i .....	1,059	2.1%	1,017	42	42	1,059	
Leeward .....	5,709	11.4%	5,649	60	60	5,709	
Maui .....	2,903	5.8%	2,828	75	75	2,903	
Windward .....	1,713	3.4%	1,702	11	11	1,713	

1/ The Total Headcount is the sum of Regular and Special students only.

2/ Counts for Continuing Education credit students at UH Manoa (Outreach College), UH Hilo and Honolulu CC (SOCAD).

These numbers are included in the Regular student count and are shown separately for information purposes only.

Excludes students who may have enrolled after the census date.



**TABLE 2**  
**HEADCOUNT ENROLLMENT OF CREDIT STUDENTS, BY CAMPUS**  
**UNIVERSITY OF HAWAI'I**  
**FALL 1995 TO FALL 2005**

FALL SEMESTER	TOTAL Pct No. Chg	UH		UH		UH		UH COMMUNITY COLLEGES															
		AT MĀNOA		AT HILO		WEST O'AHU		SUBTOTAL		HAWAI'I		HONOLULU		KAPI'OLANI		KAUA'I		LEEWARD		MAUI		WINDWARD	
		No.	Chg	No.	Chg	No.	Chg	No.	Chg	No.	Chg	No.	Chg	No.	Chg	No.	Chg	No.	Chg	No.	Chg	No.	Chg
1995 .....	50,242 -2.8	19,801 -1.2	2,872 -3.9	716 -3.8	26,853 -3.8	2,811 -0.1	4,445 -7.9	7,329 -4.2	1,461 -3.8	6,368 -2.1	2,765 -2.2	1,674 -5.3											
1996 .....	47,379 -5.7	18,252 -7.8	2,800 -2.5	648 -9.5	25,679 -4.4	2,463 -12.4	4,090 -8.0	7,373 0.6	1,367 -6.4	6,014 -5.6	2,854 3.2	1,518 -9.3											
1997.....	45,551 -3.9	17,365 -4.9	2,639 -5.8	648 0.0	24,899 -3.0	2,221 -9.8	3,970 -2.9	7,189 -2.5	1,283 -6.1	5,936 -1.3	2,787 -2.3	1,513 -0.3											
1998 .....	45,337 -0.5	17,013 -2.0	2,730 3.4	685 5.7	24,909 0.0	2,308 3.9	4,124 3.9	7,236 0.7	1,136 -11.5	5,765 -2.9	2,849 2.2	1,491 -1.5											
1999 1/ ..	46,479 NA	17,612 NA	2,790 NA	687 0.3	25,390 NA	2,279 -1.3	4,769 NA	7,254 0.2	1,142 0.5	5,570 -3.4	2,862 0.5	1,514 1.5											
2000 .....	44,579 -4.1	17,263 -2.0	2,874 3.0	665 -3.2	23,777 -6.4	2,090 -8.3	4,487 -5.9	6,760 -6.8	1,052 -7.9	5,259 -5.6	2,678 -6.4	1,451 -4.2											
2001 .....	45,994 3.2	17,532 1.6	2,913 1.4	740 11.3	24,809 4.3	2,075 -0.7	4,653 3.7	7,081 4.7	1,185 12.6	5,562 5.8	2,699 0.8	1,554 7.1											
2002 2/ ..	48,173 4.7	18,706 6.7	3,040 4.4	834 12.7	25,593 3.2	2,182 5.2	4,478 -3.8	7,041 -0.6	1,224 3.3	5,918 6.4	2,989 10.7	1,761 13.3											
2003 3/ ..	50,317 4.5	19,863 6.2	3,300 8.6	810 -2.9	26,344 2.9	2,346 7.5	4,238 -5.4	7,491 6.4	1,210 -1.1	6,201 4.8	2,985 -0.1	1,873 6.4											
2004 .....	50,569 0.5	20,549 3.5	3,288 -0.4	834 3.0	25,898 -1.7	2,440 4.0	4,336 2.3	7,174 -4.2	1,117 -7.7	6,060 -2.3	2,996 0.4	1,775 -5.2											
2005 .....	50,157 -0.8	20,644 0.5	3,422 4.1	858 2.9	25,233 -2.6	2,377 -2.6	4,183 -3.5	7,289 1.6	1,059 -5.2	5,709 -5.8	2,903 -3.1	1,713 -3.5											

1/ Includes continuing education credit students at UH Manoa, UH Hilo and Honolulu CC, beginning Fall 1999. Fall 1999 percentage change calculations for these campuses, and for both the UH and UHCC systems, are incomparable to prior years and are not shown.

2/ Migration to new registration system at the UH Community Colleges.

3/ Migration to new registration system at UH Mānoa, UH Hilo and UH-West O'ahu.

Note: Data include special students (concurrents, early admits and auditors) for all years shown.

**TABLE 3**  
**FULL-TIME EQUIVALENT (FTE) ENROLLMENT OF CREDIT STUDENTS, BY CAMPUS**  
**UNIVERSITY OF HAWAI'I**  
**FALL 1995 TO FALL 2005**

FALL SEMESTER	TOTAL		UH AT MĀNOA		UH AT HILO		UH WEST O'AHU		UH COMMUNITY COLLEGES															
	No.	Pct Chg	No.	Pct Chg	No.	Pct Chg	No.	Pct Chg	SUBTOTAL		HAWAI'I		HONOLULU		KAPI'OLANI		KAUA'I		LEEWARD		MAUI		WINDWARD	
									No.	Pct Chg	No.	Pct Chg	No.	Pct Chg	No.	Pct Chg	No.	Pct Chg	No.	Pct Chg	No.	Pct Chg	No.	Pct Chg
1995 .....	34,416	-1.7	15,613	-0.6	2,289	-2.5	428	-1.6	16,086	-2.7	2,002	-0.1	2,624	-6.6	4,219	-2.4	854	-3.1	3,883	-2.9	1,544	-0.3	960	-0.4
1996 .....	32,550	-5.4	14,358	-8.0	2,242	-2.1	387	-9.6	15,563	-3.3	1,718	-14.2	2,463	-6.1	4,334	2.7	832	-2.6	3,699	-4.7	1,610	4.3	907	-5.5
1997 .....	31,584	-3.0	13,839	-3.6	2,174	-3.0	392	1.3	15,179	-2.5	1,586	-7.7	2,427	-1.5	4,262	-1.7	806	-3.1	3,623	-2.1	1,586	-1.5	889	-2.0
1998 .....	31,362	-0.7	13,534	-2.2	2,214	1.8	428	9.2	15,186	0.0	1,593	0.4	2,556	5.3	4,240	-0.5	700	-13.2	3,611	-0.3	1,593	0.4	893	0.4
1999 1/ .	31,839	NA	13,801	NA	2,260	NA	442	3.3	15,336	NA	1,564	-1.8	2,849	NA	4,331	2.1	655	-6.4	3,459	-4.2	1,573	-1.3	905	1.3
2000 .....	30,886	-3.0	13,537	-1.9	2,320	2.7	445	0.7	14,584	-4.9	1,432	-8.4	2,722	-4.5	4,118	-4.9	610	-6.9	3,339	-3.5	1,493	-5.1	870	-3.9
2001 .....	31,595	2.3	13,936	2.9	2,408	3.8	443	-0.4	14,808	1.5	1,378	-3.8	2,709	-0.5	4,253	3.3	625	2.5	3,449	3.3	1,453	-2.7	941	8.2
2002 2/ .	33,354	5.6	15,018	7.8	2,551	5.9	472	6.5	15,313	3.4	1,431	3.8	2,663	-1.7	4,225	-0.7	673	7.7	3,622	5.0	1,630	12.2	1,069	13.6
2003 3/ .	34,517	3.5	15,920	6.0	2,784	9.1	475	0.6	15,338	0.2	1,496	4.5	2,448	-8.1	4,308	2.0	662	-1.6	3,653	0.9	1,659	1.8	1,112	4.0
2004 .....	34,672	0.4	16,376	2.9	2,781	-0.1	476	0.2	15,039	-1.9	1,522	1.7	2,479	1.3	4,139	-3.9	613	-7.4	3,563	-2.5	1,682	1.4	1,041	-6.4
2005 .....	34,569	-0.3	16,575	1.2	2,904	4.4	490	2.9	14,600	-2.9	1,480	-2.8	2,387	-3.7	4,139	0.0	592	-3.4	3,332	-6.5	1,672	-0.6	998	-4.1

1/ Includes continuing education credit students at UH Manoa, UH Hilo and Honolulu CC, beginning Fall 1999. Fall 1999 percentage change calculations for these campuses, and for both the UH and UHCC systems, are incomparable to prior years and are not shown.

2/ Migration to new registration system at the UH Community Colleges.

3/ Migration to new registration system at UH Mānoa, UH Hilo and UH-West O'ahu.

Note: Data include special students (concurrents, early admits and auditors) for all years shown.

SOURCE: University of Hawai'i, Institutional Research Office; Revised March 2006.

**TABLE 4**  
**SELECTED CHARACTERISTICS OF CREDIT STUDENTS, BY UNIT**  
**UNIVERSITY OF HAWAI'I**  
**FALL 2005**

CHARACTERISTIC	TOTAL		UH AT MĀNOA		UH AT HILO		UH WEST O'AHU		UH COMMUNITY COLLEGES	
	No.	V%	No.	V%	No.	V%	No.	V%	No.	V%
TOTAL .....	50,157	100.0	20,644	100.0	3,422	100.0	858	100.0	25,233	100.0
<b>EDUCATIONAL LEVEL:</b>										
Undergraduate .....	40,085	79.9	14,266	69.1	3,185	93.1	829	96.6	21,805	86.4
Classified .....	37,073	73.9	13,826	67.0	3,095	90.4	800	93.2	19,352	76.7
Lower Division .....	25,906	51.6	5,132	24.9	1,422	41.6			19,352	76.7
Freshmen .....	14,821	29.5	2,554	12.4	809	23.6			11,458	45.4
Sophomores .....	11,085	22.1	2,578	12.5	613	17.9			7,894	31.3
Upper Division .....	11,167	22.3	8,694	42.1	1,673	48.9	800	93.2		
Juniors .....	4,854	9.7	3,689	17.9	781	22.8	384	44.8		
Seniors .....	6,313	12.6	5,005	24.2	892	26.1	416	48.5		
Unclassified .....	3,012	6.0	440	2.1	90	2.6	29	3.4	2,453	9.7
Graduate .....	6,500	13.0	6,292	30.5	208	6.1				
Classified .....	5,575	11.1	5,409	26.2	166	4.9				
Unclassified .....	925	1.8	883	4.3	42	1.2				
Home-Based at Other UH Campus 1/ No Data .....	3,502 70	7.0 0.1	51 35	0.2 0.2	28 1	0.8 <0.1	29 0	3.4	3,394 34	13.5 0.1
<b>GENDER:</b>										
Men .....	21,037	41.9	9,002	43.6	1,387	40.5	259	30.2	10,389	41.2
Women .....	28,982	57.8	11,561	56.0	2,035	59.5	599	69.8	14,787	58.6
No Data .....	138	0.3	81	0.4					57	0.2
<b>PERMANENT HOME ADDRESS:</b>										
Hawai'i .....	38,622	77.0	14,058	68.1	2,021	59.1	833	97.1	21,710	86.0
O'ahu .....	28,587	57.0	12,061	58.4	152	4.4	672	78.3	15,702	62.2
East Honolulu .....	1,774	3.5	1,048	5.1	6	0.2	4	0.5	716	2.8
Honolulu .....	11,170	22.3	5,448	26.4	38	1.1	115	13.4	5,569	22.1
Leeward .....	11,706	23.3	3,861	18.7	70	2.0	476	55.5	7,299	28.9
Windward .....	3,937	7.8	1,704	8.3	38	1.1	77	9.0	2,118	8.4
Hawai'i .....	4,479	8.9	705	3.4	1,703	49.8	26	3.0	2,045	8.1
Kaua'i .....	1,747	3.5	452	2.2	54	1.6	42	4.9	1,199	4.8
Maui County .....	3,793	7.6	836	4.0	111	3.2	93	10.8	2,753	10.9
Lanai .....	69	0.1	25	0.1	2	0.1			42	0.2
Maui .....	3,491	7.0	764	3.7	88	2.6	84	9.8	2,555	10.1
Moloka'i .....	233	0.5	47	0.2	21	0.6	9	1.0	156	0.6
Other Hawai'i .....	16	<0.1	4	<0.1	1	<0.1			11	<0.1
Other than Hawai'i .....	8,568	17.1	6,145	29.8	1,240	36.2	16	1.9	1,167	4.6
U.S. Mainland .....	5,114	10.2	3,829	18.5	856	25.0	13	1.5	416	1.6
Military .....	40	0.1	28	0.1	4	0.1			8	<0.1
U.S. Related Areas 2/ .....	683	1.4	398	1.9	160	4.7	1	0.1	124	0.5
Foreign .....	2,731	5.4	1,890	9.2	220	6.4	2	0.2	619	2.5
No Data .....	2,967	5.9	441	2.1	161	4.7	9	1.0	2,356	9.3
<b>TUITION STATUS:</b>										
Resident Subtotal .....	39,181	78.1	13,589	65.8	2,062	60.3	795	92.7	22,735	90.1
Resident .....	38,214	76.2	12,974	62.8	1,989	58.1	785	91.5	22,466	89.0
Resident Converted .....	967	1.9	615	3.0	73	2.1	10	1.2	269	1.1
Non-Resident Subtotal .....	10,925	21.8	7,007	33.9	1,360	39.7	63	7.3	2,495	9.9
Not Exempted .....	4,882	9.7	3,079	14.9	500	14.6	13	1.5	1,290	5.1
West Undergrad Exchange 3/ .....	2,058	4.1	1,542	7.5	516	15.1				
Exempted .....	3,985	7.9	2,386	11.6	344	10.1	50	5.8	1,205	4.8
East-West Center .....	226	0.5	224	1.1	2	0.1				
Faculty / Staff .....	211	0.4	175	0.8	15	0.4	1	0.1	20	0.1
Hawaiian .....	339	0.7	137	0.7	26	0.8	5	0.6	171	0.7
Institutional .....	752	1.5	342	1.7	181	5.3	3	0.3	226	0.9
Military .....	1,212	2.4	395	1.9			41	4.8	776	3.1
Pacific-Asian .....	892	1.8	864	4.2	17	0.5			11	<0.1
Student Exchange .....	353	0.7	249	1.2	103	3.0			1	<0.1
No Data .....	51	0.1	48	0.2					3	<0.1

TABLE 4 (cont.)

CHARACTERISTIC	TOTAL		UH AT MĀNOA		UH AT HILO		UH WEST O'AHU		UH COMMUNITY COLLEGES	
	No.	V%	No.	V%	No.	V%	No.	V%	No.	V%
<b>AGE:</b>										
Mean Age .....	25.5		25.3		24.9		32.9		25.4	
Under 18 .....	1,959	3.9	446	2.2	113	3.3			1,400	5.5
18-19 .....	10,801	21.5	3,694	17.9	759	22.2	4	0.5	6,344	25.1
20-21 .....	9,955	19.8	4,280	20.7	810	23.7	49	5.7	4,816	19.1
22-24 .....	9,446	18.8	4,613	22.3	724	21.2	188	21.9	3,921	15.5
25-29 .....	7,256	14.5	3,429	16.6	410	12.0	201	23.4	3,216	12.7
30-34 .....	3,741	7.5	1,690	8.2	194	5.7	116	13.5	1,741	6.9
35-59 .....	6,640	13.2	2,372	11.5	387	11.3	283	33.0	3,598	14.3
60 and over .....	302	0.6	83	0.4	24	0.7	17	2.0	178	0.7
No Data .....	57	0.1	37	0.2	1	<0.1			19	0.1
<b>NON-U.S. CITIZENS: 4/</b>										
Americas .....	4,642	9.3	2,423	11.7	458	13.4	32	3.7	1,729	6.9
Europe .....	261	0.5	157	0.8	29	0.8	3	0.3	72	0.3
Asia .....	293	0.6	211	1.0	26	0.8	2	0.2	54	0.2
Asia .....	3,531	7.0	1,840	8.9	245	7.2	23	2.7	1,423	5.6
Africa & Middle East .....	67	0.1	45	0.2	2	0.1	1	0.1	19	0.1
Australia & Oceania .....	490	1.0	170	0.8	156	4.6	3	0.3	161	0.6
<b>NON-RESIDENT ALIEN 5/</b>										
Undergraduate .....	2,261	4.5	1,274	6.2	265	7.7	9	1.0	713	2.8
Graduate .....	1,444	2.9	470	2.3	252	7.4	9	1.0	713	2.8
No Data .....	810	1.6	801	3.9	9	0.3				
No Data .....	7	<0.1	3	<0.1	4	0.1				
<b>ATTENDANCE STATUS:</b>										
Full-Time .....	28,030	55.9	15,037	72.8	2,752	80.4	306	35.7	9,935	39.4
Part-Time .....	22,127	44.1	5,607	27.2	670	19.6	552	64.3	15,298	60.6
<b>TOTAL SSH TAKEN</b>										
Full-Time .....	505,361		235,981		43,069		7,344		218,967	
Part-Time .....	379,598		206,748		39,201		4,135		129,514	
No Data .....	125,763		29,233		3,868		3,209		89,453	
<b>AVERAGE SSH TAKEN</b>										
Full-Time .....	10.1		11.4		12.6		8.6		8.7	
Part-Time .....	13.5		13.7		14.2		13.5		13.0	
No Data .....	5.7		5.2		5.8		5.8		5.8	
<b>REGISTRATION STATUS:</b>										
Continuing .....	29,473	58.8	13,650	66.1	1,929	56.4	571	66.6	13,323	52.8
Returning .....	2,967	5.9	407	2.0	173	5.1	43	5.0	2,344	9.3
First-Time .....	10,048	20.0	4,097	19.8	502	14.7			5,449	21.6
Transfer .....	7,605	15.2	2,464	11.9	818	23.9	244	28.4	4,079	16.2
No Data .....	64	0.1	26	0.1					38	0.2
<b>HAWAIIAN ANCESTRY 6/</b>										
	7,329	14.6	1,810	8.8	561	16.4	167	19.5	4,791	19.0
<b>ENTERING STUDENTS: 7/</b>										
Undergraduates .....	20,620	41.1	6,968	33.8	1,493	43.6	287	33.4	11,872	47.0
First-Time Students .....	18,089	36.1	4,534	22.0	1,396	40.8	287	33.4	11,872	47.0
Freshmen .....	8,076	16.1	2,153	10.4	474	13.9			5,449	21.6
Other Undergraduates .....	6,754	13.5	2,021	9.8	443	12.9			4,290	17.0
Transfers 8/ .....	1,322	2.6	132	0.6	31	0.9			1,159	4.6
Returning .....	7,244	14.4	2,132	10.3	789	23.1	244	28.4	4,079	16.2
Graduates .....	2,769	5.5	249	1.2	133	3.9	43	5.0	2,344	9.3
No Data .....	2,503	5.0	2,406	11.7	97	2.8				
No Data .....	28	0.1	28	0.1						

1/ Students whose primary campus, as defined in Banner / ODS, is not the campus at which registered.

2/ Includes U.S. Possessions, U.S. Commonwealths and republics within the Compact of Free Association.

3/ Western Undergraduate Exchange students, who pay 1.5 times the resident tuition.

4/ Data on U.S. Citizens no longer shown, effective Fall 2005. Breakout expanded with migration to Operational Data Store in Fall 2005.

5/ Shows sum of students with student and other visas; excludes resident aliens.

6/ New item added to the UH Common Application form in Fall 2005. Shows sum of all those who indicated Hawaiian ancestry plus those who either did not answer the question or answered in the negative but who indicated Hawaiian ethnicity.

7/ Entering students are defined as those with registration status of first-time, transfer or returning.

8/ Breakout by previous college unavailable for Fall 2005.

**TABLE 5**  
**SELECTED CHARACTERISTICS OF CREDIT STUDENTS**  
**UNIVERSITY OF HAWAI'I**  
**FALL 2001 TO FALL 2005**

CHARACTERISTIC	FALL 2001		FALL 2002		FALL 2003		FALL 2004		FALL 2005		1 Year
	No.	V%	No.	V%	No.	V%	No.	V%	No.	V%	% Chge
TOTAL .....	45,994	100.0	48,173	100.0	50,317	100.0	50,569	100.0	50,157	100.0	-0.8
<b>EDUCATIONAL LEVEL: 1/</b>											
Undergraduate .....	40,280	87.6	41,862	86.9	40,867	81.2	40,496	80.1	40,085	79.9	-1.0
Classified .....	36,812	80.0	38,369	79.6	38,000	75.5	37,503	74.2	37,073	73.9	-1.1
Lower Division .....	27,572	59.9	28,495	59.2	28,620	56.9	28,325	56.0	25,906	51.6	-8.5
Freshmen .....	16,230	35.3	16,877	35.0	19,423	38.6	20,301	40.1	14,821	29.5	-27.0
Sophomores .....	11,342	24.7	11,618	24.1	9,197	18.3	8,024	15.9	11,085	22.1	38.1
Upper Division .....	9,240	20.1	9,874	20.5	9,380	18.6	9,178	18.1	11,167	22.3	21.7
Juniors .....	3,896	8.5	4,177	8.7	4,985	9.9	5,260	10.4	4,854	9.7	-7.7
Seniors .....	5,344	11.6	5,697	11.8	4,395	8.7	3,918	7.7	6,313	12.6	61.1
Unclassified .....	3,468	7.5	3,493	7.3	2,867	5.7	2,993	5.9	3,012	6.0	0.6
Graduate .....	5,670	12.3	6,025	12.5	6,197	12.3	6,404	12.7	6,500	13.0	1.5
Classified .....	4,629	10.1	4,911	10.2	5,255	10.4	5,488	10.9	5,575	11.1	1.6
Unclassified .....	1,041	2.3	1,114	2.3	942	1.9	916	1.8	925	1.8	1.0
Home-Based at Other Campus 2/ ..					2,997	6.0	3,459	6.8	3,502	7.0	1.2
No Data 3/ .....	44	0.1	286	0.6	256	0.5	210	0.4	70	0.1	
<b>GENDER:</b>											
Men .....	19,902	43.3	20,495	42.5	20,963	41.7	20,931	41.4	21,037	41.9	0.5
Women .....	26,089	56.7	27,582	57.3	29,122	57.9	29,451	58.2	28,982	57.8	-1.6
No Data 3/ .....	3	<0.1	96	0.2	232	0.4	187	0.4	138	0.3	
<b>PERMANENT HOME ADDRESS:</b>											
Hawai'i .....	40,912	89.0	39,046	81.1	37,767	75.1	37,815	74.8	38,622	77.0	2.1
Mainland .....	2,979	6.5	3,488	7.2	4,330	8.6	5,054	10.0	5,114	10.2	1.2
Military .....									40	0.1	
U.S. Related Areas 4/ .....	484	1.1	370	0.8	6	<0.1	1	<0.1	683	1.4	
Foreign .....	1,392	3.0	1,178	2.4	5	<0.1	20	<0.1	2,731	5.4	
No Data 3/ .....	227	0.5	4,091	8.5	8,209	16.3	7,679	15.2	2,967	5.9	
<b>TUITION STATUS:</b>											
Resident Subtotal .....	37,895	82.4	39,344	81.7	40,531	80.6	40,002	79.1	39,181	78.1	-2.1
Resident .....	37,224	80.9	38,585	80.1	39,683	78.9	39,094	77.3	38,214	76.2	-2.3
Resident Converted .....	671	1.5	759	1.6	848	1.7	908	1.8	967	1.9	6.5
Non-Resident Subtotal .....	8,099	17.6	8,736	18.1	9,731	19.3	10,542	20.8	10,925	21.8	3.6
Not Exempted .....	3,137	6.8	3,444	7.1	3,972	7.9	4,420	8.7	4,882	9.7	10.5
West Undergrad Exchange 5/ ....	1,056	2.3	1,355	2.8	1,815	3.6	2,166	4.3	2,058	4.1	-5.0

TABLE 5 (cont.)

CHARACTERISTIC	FALL 2001		FALL 2002		FALL 2003		FALL 2004		FALL 2005		1 Year
	No.	V%	No.	V%	No.	V%	No.	V%	No.	V%	% Chge
Exempted .....	3,906	8.5	3,937	8.2	3,944	7.8	3,956	7.8	3,985	7.9	0.7
East-West Center .....	111	0.2	148	0.3	160	0.3	185	0.4	226	0.5	22.2
Faculty / Staff .....	192	0.4	194	0.4	204	0.4	178	0.4	211	0.4	18.5
Hawaiian .....	204	0.4	229	0.5	255	0.5	301	0.6	339	0.7	12.6
Institutional 6/ .....	718	1.6	438	0.9	722	1.4	741	1.5	752	1.5	1.5
Military .....	1,600	3.5	1,500	3.1	1,320	2.6	1,245	2.5	1,212	2.4	-2.7
Pacific-Asian 6/ .....	720	1.6	1,049	2.2	872	1.7	906	1.8	892	1.8	-1.5
Student Exchange .....	361	0.8	379	0.8	411	0.8	400	0.8	353	0.7	-11.8
No Data .....			93	0.2	55	0.1	25	0.1	51	0.1	
AGE:											
Mean Age of Students (in years) ....	26.2		26.2		26.0		25.7		25.5		
Less than 18 Years.....	1,210	2.6	1,252	2.6	1,371	2.7	1,554	3.1	1,959	3.9	26.1
18 to 24 Years .....	26,414	57.4	27,936	58.0	29,491	58.6	30,167	59.7	30,202	60.2	0.1
25 Years and Over .....	18,361	39.9	18,912	39.3	19,395	38.5	18,806	37.2	17,939	35.8	-4.6
No Data .....	9	<0.1	73	0.2	60	0.1	42	0.1	57	0.1	
NON-U.S. CITIZENS: 7/											
Foreign .....	4,782	10.4	2,862	5.9			3	<0.1	4,642	9.3	
NON-RESIDENT ALIEN 8/ .....	2,529	5.5	2,751	5.7	2,497	5.0	2,473	4.9	2,261	4.5	-8.6
Undergraduate .....	1,637	3.6	1,800	3.7	1,437	2.9	1,452	2.9	1,444	2.9	-0.6
Graduate .....	888	1.9	946	2.0	993	2.0	1,017	2.0	810	1.6	-20.4
No Data .....	4	<0.1	5	<0.1	67	0.1	4	<0.1	7	<0.1	
ATTENDANCE STATUS:											
Full-Time .....	25,804	56.1	27,188	56.4	28,008	55.7	28,273	55.9	28,030	55.9	-0.9
Part-Time .....	20,147	43.8	20,921	43.4	22,211	44.1	22,156	43.8	22,127	44.1	-0.1
Zero SSH 9/ .....			43	0.1	48	0.1					
No Data .....	43	0.1	21	<0.1	50	0.1	140	0.3			
TOTAL SSH TAKEN.....	462,654		488,390		505,103		507,104		505,361		-0.3
Full-Time .....	349,097		368,578		378,541		381,402		379,598		-0.5
Part-Time .....	113,099		119,576		126,317		124,881		125,763		0.7
No Data .....	458		236		245		821				
AVERAGE SSH TAKEN 10/ .....	10.1		10.1		10.0		10.0		10.1		
Full-Time .....	13.5		13.6		13.4		13.5		13.5		
Part-Time .....	5.6		5.7		5.9		5.6		5.7		
No Data .....	10.7		11.2		4.9		5.9				

TABLE 5 (cont.)

CHARACTERISTIC	FALL 2001		FALL 2002		FALL 2003		FALL 2004		FALL 2005		1 Year
	No.	V%	No.	V%	No.	V%	No.	V%	No.	V%	% Chge
<b>REGISTRATION STATUS:</b>											
Continuing .....	27,304	59.4	28,783	59.8	32,016	63.6	32,951	65.2	29,473	58.8	-10.6
Returning .....	2,931	6.4	3,019	6.3	2,724	5.4	2,542	5.0	2,967	5.9	16.7
First-Time .....	9,306	20.2	9,605	19.9	9,559	19.0	9,369	18.5	10,048	20.0	7.2
Transfer .....	6,452	14.0	6,765	14.0	6,018	12.0	5,707	11.3	7,605	15.2	33.3
No Data .....	1	<0.1	1	<0.1					64	0.1	
<b>ENTERING STUDENTS 11/ .....</b>											
Undergraduates .....	18,689	40.6	19,389	40.2	18,301	36.4	17,618	34.8	20,620	41.1	17.0
First-Time Students .....	16,780	36.5	17,277	35.9	15,849	31.5	15,598	30.8	18,089	36.1	16.0
Freshmen .....	7,871	17.1	8,045	16.7	7,832	15.6	7,719	15.3	8,076	16.1	4.6
Other Undergraduates .....	6,857	14.9	7,047	14.6	6,980	13.9	6,722	13.3	6,754	13.5	0.5
Transfers 12/ .....	1,014	2.2	998	2.1	852	1.7	997	2.0	1,322	2.6	32.6
From Other UH Campuses .....	6,241	13.6	6,545	13.6	5,454	10.8	5,458	10.8	7,244	14.4	32.7
From Non-UH Campuses .....	3,167	6.9	2,741	5.7	1,602	3.2	1,503	3.0			
Institution Not Identified 13/ .....	2,896	6.3	2,310	4.8	2,058	4.1	2,488	4.9			
Returning .....	178	0.4	1,494	3.1	1,794	3.6	1,467	2.9			
Graduates .....	2,668	5.8	2,687	5.6	2,563	5.1	2,421	4.8	2,769	5.5	14.4
No Data .....	1,874	4.1	2,094	4.3	2,070	4.1	1,942	3.8	2,503	5.0	28.9
No Data .....	35	0.1	18	<0.1	382	0.8	78	0.2	28	0.1	
<b>HAWAIIAN ANCESTRY 14/ .....</b>									7,329	14.6	
<b>ETHNICITY: 15/</b>											
Asian / Pacific Islander .....	28,950	62.9	30,083	62.4	30,433	60.5	30,269	59.9	30,380	60.6	0.4
Asian .....	19,609	42.6	20,286	42.1	20,224	40.2	19,956	39.5	19,568	39.0	-1.9
Chinese .....	3,019	6.6	3,028	6.3	2,934	5.8	2,887	5.7	2,733	5.4	-5.3
Filipino .....	6,012	13.1	6,356	13.2	6,456	12.8	6,420	12.7	6,371	12.7	-0.8
Indian Subcontinent .....	102	0.2	130	0.3	130	0.3	128	0.3	148	0.3	15.6
Japanese .....	8,344	18.1	8,460	17.6	8,370	16.6	8,133	16.1	7,890	15.7	-3.0
Korean .....	1,376	3.0	1,451	3.0	1,477	2.9	1,464	2.9	1,473	2.9	0.6
Laotian .....					33	0.1	49	0.1	64	0.1	30.6
Thai .....					39	0.1	68	0.1	91	0.2	33.8
Vietnamese .....					116	0.2	238	0.5	341	0.7	43.3
Other Asian .....	756	1.6	861	1.8	669	1.3	569	1.1	457	0.9	-19.7
Hawaiian or Pacific Islander .....	7,511	16.3	7,788	16.2	8,128	16.2	8,324	16.5	8,532	17.0	2.5
Guamanian or Chamorro .....					57	0.1	96	0.2	137	0.3	42.7
Hawaiian / Part-Hawaiian .....	6,248	13.6	6,555	13.6	6,835	13.6	6,772	13.4	6,901	13.8	1.9
Micronesia .....					111	0.2	176	0.3	249	0.5	41.5
Samoan .....					186	0.4	382	0.8	448	0.9	17.3
Tongan .....					38	0.1	60	0.1	58	0.1	-3.3
Other Pacific Islander .....	1,263	2.7	1,233	2.6	901	1.8	659	1.3	487	1.0	-26.1
Mixed Pacific Islander .....							179	0.4	252	0.5	40.8
Mixed Asian / Pacific Islander ...	1,830	4.0	2,009	4.2	2,081	4.1	1,989	3.9	2,280	4.5	14.6

TABLE 5 (cont.)

CHARACTERISTIC	FALL 2001		FALL 2002		FALL 2003		FALL 2004		FALL 2005		1 Year
	No.	V%	No.	V%	No.	V%	No.	V%	No.	V%	% Chge
Hispanic .....	1,059	2.3	1,043	2.2	1,064	2.1	1,063	2.1	1,089	2.2	2.4
Puerto Rican .....	238	0.5	213	0.4	153	0.3	105	0.2	64	0.1	-39.0
Other Hispanic .....	446	1.0	434	0.9	608	1.2	738	1.5	884	1.8	19.8
Mixed Hispanic .....	375	0.8	396	0.8	303	0.6	220	0.4	141	0.3	-35.9
Caucasian .....	9,574	20.8	10,074	20.9	10,626	21.1	10,985	21.7	10,883	21.7	-0.9
Middle Easterner .....	43	0.1	45	0.1	28	0.1	17	<0.1	16	<0.1	-5.9
Portuguese .....	468	1.0	498	1.0	378	0.8	236	0.5	179	0.4	-24.2
Other Caucasian .....	9,063	19.7	9,531	19.8	10,220	20.3	10,732	21.2	10,688	21.3	-0.4
African American .....	569	1.2	535	1.1	542	1.1	560	1.1	573	1.1	2.3
American Indian / Alaska Native .....	146	0.3	163	0.3	172	0.3	190	0.4	220	0.4	15.8
Mixed Ethnic Background .....	5,193	11.3	5,449	11.3	5,970	11.9	6,129	12.1	5,762	11.5	-6.0
No Response .....	503	1.1	826	1.7	1,510	3.0	1,373	2.7	1,250	2.5	

- 1/ Ed Level for Fall 2003 has been adjusted; totals may not tie to reports previously published.
- 2/ Students whose primary campus, as defined in Banner / ODS, is not the campus at which registered.
- 3/ Migration to new student registration system in 2002-03 resulted in a large increase in records with invalid data.
- 4/ Includes U.S. Possessions, U.S. Commonwealths and republics within the Compact of Free Association.  
Data on students from U.S. Related Areas and Foreign countries not available for Fall 2003 and Fall 2004.
- 5/ Western Undergraduate Exchange students, who pay 1.5 times the resident tuition.
- 6/ Counts for the Institutional category understated for Fall 2002, while counts for the Pacific-Asian category are overstated.
- 7/ Data on foreign students not available for Fall 2003 or Fall 2004. Data on U.S. Citizens no longer shown, effective Fall 2005.  
Breakout expanded with migration to Operational Data Store (ODS) in Fall 2005.
- 8/ Shows sum of students with student and other visas; excludes resident aliens.
- 9/ Students with zero SSH are auditing courses for no credit, attending remedial non-credit courses or waiting for courses not currently offered.  
Zero SSH no longer included as of Fall 2000, but persist due to data processing anomalies.
- 10/ Average SSH calculation excludes students with zero SSH.
- 11/ Entering students are defined as those with registration status of first-time, transfer or returning.
- 12/ Breakout by previous college unavailable for Fall 2005.
- 13/ Migration to a new student registration system in Fall 2002 resulted in a large increase in no data on previous college.
- 14/ New item added to the UH Common Application form in Fall 2005. Shows sum of all those who indicated Hawaiian ancestry plus those who either did not answer the question or answered in the negative but who indicated Hawaiian ethnicity.
- 15/ With migration to new registration system, ethnic categories have been expanded. However, only new students are included in the new categories; students already enrolled are reported under the ethnic category previously selected.



**TABLE 6**  
**ETHNIC BACKGROUND OF CREDIT STUDENTS, BY CAMPUS**  
**UNIVERSITY OF HAWAI'I**  
**FALL 2005**

	TOTAL		UH MĀNOA		UH HILO		UH WEST O'AHU		UH COMMUNITY COLLEGES															
	No.	V%	No.	V%	No.	V%	No.	V%	Subtotal No.	Subtotal V%	Hawai'i No.	Hawai'i V%	Honolulu No.	Honolulu V%	Kapi'olani No.	Kapi'olani V%	Kaua'i No.	Kaua'i V%	Leeward No.	Leeward V%	Maui No.	Maui V%	Windward No.	Windward V%
TOTAL .....	50,157	100.0	20,644	100.0	3,422	100.0	858	100.0	25,233	100.0	2,377	100.0	4,183	100.0	7,289	100.0	1,059	100.0	5,709	100.0	2,903	100.0	1,713	100.0
Asian / Pacific Islander .....	30,380	60.6	11,782	57.1	1,586	46.3	504	58.7	16,508	65.4	1,408	59.2	2,952	70.6	5,127	70.3	625	59.0	3,717	65.1	1,655	57.0	1,024	59.8
Asian .....	19,568	39.0	8,391	40.6	739	21.6	290	33.8	10,148	40.2	600	25.2	1,854	44.3	3,750	51.4	346	32.7	2,398	42.0	874	30.1	326	19.0
Chinese .....	2,733	5.4	1,604	7.8	67	2.0	12	1.4	1,050	4.2	18	0.8	255	6.1	605	8.3	6	0.6	115	2.0	23	0.8	28	1.6
Filipino .....	6,371	12.7	1,556	7.5	177	5.2	133	15.5	4,505	17.9	307	12.9	831	19.9	1,036	14.2	227	21.4	1,463	25.6	541	18.6	100	5.8
Indian Subcontinent .....	148	0.3	110	0.5	3	0.1	1	0.1	34	0.1	1	<0.1	5	0.1	12	0.2	1	0.1	7	0.1	4	0.1	4	0.2
Japanese .....	7,890	15.7	3,810	18.5	396	11.6	126	14.7	3,558	14.1	228	9.6	561	13.4	1,559	21.4	102	9.6	670	11.7	268	9.2	170	9.9
Korean .....	1,473	2.9	789	3.8	77	2.3	13	1.5	594	2.4	27	1.1	92	2.2	357	4.9	1	0.1	83	1.5	25	0.9	9	0.5
Laotian .....	64	0.1	20	0.1	2	0.1			42	0.2			15	0.4	12	0.2			12	0.2	2	0.1	1	0.1
Thai .....	91	0.2	55	0.3					36	0.1	5	0.2	10	0.2	9	0.1	2	0.2	8	0.1	1	<0.1	1	0.1
Vietnamese .....	341	0.7	171	0.8	3	0.1	2	0.2	165	0.7	4	0.2	48	1.1	86	1.2	6	0.6	11	0.2	7	0.2	3	0.2
Other Asian .....	457	0.9	276	1.3	14	0.4	3	0.3	164	0.6	10	0.4	37	0.9	74	1.0	1	0.1	29	0.5	3	0.1	10	0.6
Hawaiian or Pacific Islander .....	8,532	17.0	2,370	11.5	756	22.1	184	21.4	5,222	20.7	765	32.2	885	21.2	988	13.6	230	21.7	1,024	17.9	711	24.5	619	36.1
Guamanian or Chamorro .....	137	0.3	65	0.3	3	0.1			69	0.3	1	<0.1	11	0.3	36	0.5	1	0.1	9	0.2	5	0.2	6	0.4
Hawaiian / Part-Hawaiian .....	6,901	13.8	1,721	8.3	547	16.0	165	19.2	4,468	17.7	698	29.4	712	17.0	789	10.8	211	19.9	850	14.9	647	22.3	561	32.7
Micronesian .....	249	0.5	49	0.2	53	1.5	2	0.2	145	0.6	28	1.2	39	0.9	42	0.6	4	0.4	13	0.2	16	0.6	3	0.2
Samoan .....	448	0.9	251	1.2	10	0.3	8	0.9	179	0.7	3	0.1	50	1.2	23	0.3	2	0.2	77	1.3	6	0.2	18	1.1
Tongan .....	58	0.1	17	0.1			1	0.1	40	0.2	1	<0.1	4	0.1	7	0.1	2	0.2	4	0.1	10	0.3	12	0.7
Other Pacific Islander .....	487	1.0	183	0.9	131	3.8	7	0.8	166	0.7	20	0.8	33	0.8	53	0.7	3	0.3	38	0.7	15	0.5	4	0.2
Mixed Pacific Islander .....	252	0.5	84	0.4	12	0.4	1	0.1	155	0.6	14	0.6	36	0.9	38	0.5	7	0.7	33	0.6	12	0.4	15	0.9
Mixed Asian / Pacific Islander .....	2,280	4.5	1,021	4.9	91	2.7	30	3.5	1,138	4.5	43	1.8	213	5.1	389	5.3	49	4.6	295	5.2	70	2.4	79	4.6
Hispanic .....	1,089	2.2	463	2.2	92	2.7	22	2.6	512	2.0	46	1.9	79	1.9	129	1.8	22	2.1	131	2.3	70	2.4	35	2.0
Puerto Rican .....	64	0.1	21	0.1	4	0.1	2	0.2	37	0.1	8	0.3	6	0.1	5	0.1	1	0.1	11	0.2	6	0.2		
Other Hispanic .....	884	1.8	399	1.9	44	1.3	18	2.1	423	1.7	33	1.4	66	1.6	110	1.5	19	1.8	107	1.9	55	1.9	33	1.9
Mixed Hispanic .....	141	0.3	43	0.2	44	1.3	2	0.2	52	0.2	5	0.2	7	0.2	14	0.2	2	0.2	13	0.2	9	0.3	2	0.1
Caucasian .....	10,883	21.7	5,454	26.4	1,297	37.9	202	23.5	3,930	15.6	486	20.4	453	10.8	936	12.8	257	24.3	627	11.0	792	27.3	379	22.1
Middle Easterner .....	16	<0.1	10	<0.1					6	<0.1			1	<0.1	3	<0.1			2	<0.1				
Portuguese.....	179	0.4	35	0.2	33	1.0	5	0.6	106	0.4	25	1.1	14	0.3	17	0.2	8	0.8	11	0.2	28	1.0	3	0.2
Other Caucasian .....	10,688	21.3	5,409	26.2	1,264	36.9	197	23.0	3,818	15.1	461	19.4	438	10.5	916	12.6	249	23.5	614	10.8	764	26.3	376	21.9
African American .....	573	1.1	232	1.1	45	1.3	16	1.9	280	1.1	16	0.7	71	1.7	69	0.9	7	0.7	92	1.6	9	0.3	16	0.9
American Indian / Alaska Native .....	220	0.4	79	0.4	28	0.8	5	0.6	108	0.4	20	0.8	14	0.3	15	0.2	9	0.8	29	0.5	10	0.3	11	0.6
Mixed Ethnic Background .....	5,762	11.5	2,064	10.0	368	10.8	106	12.4	3,224	12.8	318	13.4	495	11.8	870	11.9	131	12.4	902	15.8	283	9.7	225	13.1
No Response .....	1,250	2.5	570	2.8	6	0.2	3	0.3	671	2.7	83	3.5	119	2.8	143	2.0	8	0.8	211	3.7	84	2.9	23	1.3

Note: With migration to new registration system, ethnic categories have been expanded. However, only incoming students are included in the new categories; students already enrolled are reported under the ethnic category previously selected.



TABLE 7 (cont.)

CHARACTERISTIC	TOTAL			UH AT MĀNOA			UH AT HILO			UH-WEST O'AHU			COMMUNITY COLLEGES		
	2001	2005	% Chg	2001	2005	% Chg	2001	2005	% Chg	2001	2005	% Chg	2001	2005	% Chg
<b>AGE:</b>															
Mean Age .....	26.2	25.5		25.8	25.3		25.9	24.9		33.0	32.9		26.3	25.4	
Under 18 .....	1,210	1,959	62	320	446	39	89	113	27				801	1,400	75
18-19 .....	9,502	10,801	14	3,071	3,694	20	673	759	13		4		5,758	6,344	10
20-21 .....	8,751	9,955	14	3,505	4,280	22	597	810	36	45	49	9	4,604	4,816	5
22-24 .....	8,161	9,446	16	3,766	4,613	22	545	724	33	153	188	23	3,697	3,921	6
25-29 .....	6,750	7,256	7	2,900	3,429	18	334	410	23	175	201	15	3,341	3,216	-4
30-34 .....	3,948	3,741	-5	1,556	1,690	9	165	194	18	104	116	12	2,123	1,741	-18
35-59 .....	7,381	6,640	-10	2,344	2,372	1	496	387	-22	248	283	14	4,293	3,598	-16
60 and over .....	282	302	7	66	83	26	14	24	71	14	17	21	188	178	-5
No Data .....	9	57		4	37			1		1			4	19	
<b>NON-U.S. CITIZENS: 5/</b>															
Foreign .....	4,782	4,642	-3	2,215	2,423	9	352	458	30	12	32	167	2,203	1,729	-22
Americas .....	314	261	-17	143	157	10	34	29	-15	2	3	50	135	72	-47
Europe .....	366	293	-20	217	211	-3	33	26	-21	1	2	100	115	54	-53
Asia .....	3,552	3,531	-1	1,716	1,840	7	141	245	74	8	23	188	1,687	1,423	-16
Africa & Middle East .....	54	67	24	30	45	50	4	2	-50		1		20	19	-5
Australia & Oceania .....	496	490	-1	109	170	56	140	156	11	1	3	200	246	161	-35
<b>NON-RESIDENT ALIEN 6/</b>															
Undergraduate .....	2,529	2,261	-11	1,597	1,274	-20	306	265	-13	1	9	800	625	713	14
Graduate .....	1,637	1,444	-12	708	470	-34	303	252	-17	1	9	800	625	713	14
No Data .....	888	810	-9	885	801	-9	3	9	200						
No Data .....	4	7		4	3			4							
<b>ATTENDANCE STATUS:</b>															
Full-Time .....	25,804	28,030	9	12,624	15,037	19	2,240	2,752	23	304	306	1	10,636	9,935	-7
Part-Time .....	20,147	22,127	10	4,874	5,607	15	673	670	0	427	552	29	14,173	15,298	8
No Data .....	43			34						9					
<b>TOTAL SSH TAKEN</b>															
Full-Time .....	462,654	505,361	9	198,101	235,981	19	35,771	43,069	20	6,647	7,344	10	222,135	218,967	-1
Part-Time .....	349,097	379,598	9	173,445	206,748	19	32,408	39,201	21	4,162	4,135	-1	139,082	129,514	-7
No Data .....	113,099	125,763	11	24,237	29,233	21	3,363	3,868	15	2,446	3,209	31	83,053	89,453	8
No Data .....	458			419						39					
<b>AVERAGE SSH TAKEN</b>															
Full-Time .....	10.1	10.1		11.3	11.4		12.3	12.6		9.0	8.6		9.0	8.7	
Part-Time .....	13.5	13.5		13.7	13.7		14.5	14.2		13.7	13.5		13.1	13.0	
No Data .....	5.6	5.7		5.0	5.2		5.0	5.8		5.7	5.8		5.9	5.8	
No Data .....	10.7			12.3						4.3					
<b>REGISTRATION STATUS:</b>															
Continuing .....	27,304	29,473	8	11,784	13,650	16	1,682	1,929	15	451	571	27	13,387	13,323	0
Returning .....	2,931	2,967	1	461	407	-12	160	173	8	34	43	26	2,276	2,344	3
First-Time .....	9,306	10,048	8	3,199	4,097	28	446	502	13				5,661	5,449	-4
Transfer .....	6,452	7,605	18	2,088	2,464	18	625	818	31	255	244	-4	3,484	4,079	17
No Data .....	1	64			26								1	38	
<b>HIGH SCHOOL BACKGROUND 7/:</b>															
Hawai'i .....	7,594	7,562	0	1,650	2,021	22	415	443	7				5,529	5,098	-8
Public .....	5,574	5,472	-2	1,290	1,390	8	236	263	11				4,048	3,819	-6
Private .....	4,664	4,586	-2	868	963	11	204	206	1				3,592	3,417	-5
No Data .....	910	886	-3	422	427	1	32	57	78				456	402	-12

TABLE 7 (cont.)

CHARACTERISTIC	TOTAL			UH AT MĀNOA			UH AT HILO			UH-WEST O'AHU			COMMUNITY COLLEGES		
	2001	2005	% Chg	2001	2005	% Chg	2001	2005	% Chg	2001	2005	% Chg	2001	2005	% Chg
Other than Hawai'i .....	1,517	1,573	4	340	619	82	177	173	-2				1,000	781	-22
US Mainland .....	1,062	1,150	8	286	529	85	146	132	-10				630	489	-22
US Related Areas 8/ .....	60	97	62	20	30	50		18					40	49	23
Foreign .....	395	326	-17	34	60	76	31	23	-26				330	243	-26
Other Special 9/ .....	483	352	-27	16	9	-44	2	7	250				465	336	-28
No Data .....	20	165		4	3								16	162	
ENTERING STUDENTS: .....	18,689	20,620	10	5,748	6,968	21	1,231	1,493	21	289	287	-1	11,421	11,872	4
Undergraduates .....	16,780	18,089	8	3,946	4,534	15	1,135	1,396	23	278	287	3	11,421	11,872	4
First-Time Students .....	7,871	8,076	3	1,764	2,153	22	446	474	6				5,661	5,449	-4
Freshmen .....	6,857	6,754	-2	1,650	2,021	22	415	443	7				4,792	4,290	-10
Other Undergraduates .....	1,014	1,322	30	114	132	16	31	31	0				869	1,159	33
Transfers 10/ .....	6,241	7,244	16	1,935	2,132	10	577	789	37	245	244	0	3,484	4,079	17
Returning .....	2,668	2,769	4	247	249	1	112	133	19	33	43	30	2,276	2,344	3
Graduates .....	1,874	2,503	34	1,776	2,406	35	96	97	1	2					
No Data .....	35	28		26	28					9					
HAWAIIAN ANCESTRY 11/ .....		7,329			1,810			561			167			4,791	
ETHNICITY: 12/															
Asian / Pacific Islander .....	28,950	30,380	5	11,036	11,782	7	1,405	1,586	13	430	504	17	16,079	16,508	3
Asian .....	19,609	19,568	0	8,241	8,391	2	678	739	9	279	290	4	10,411	10,148	-3
Chinese .....	3,019	2,733	-9	1,704	1,604	-6	65	67	3	23	12	-48	1,227	1,050	-14
Filipino .....	6,012	6,371	6	1,434	1,556	9	169	177	5	127	133	5	4,282	4,505	5
Indian Subcontinent .....	102	148	45	72	110	53	2	3	50		1		28	34	21
Japanese .....	8,344	7,890	-5	3,954	3,810	-4	400	396	-1	110	126	15	3,880	3,558	-8
Korean .....	1,376	1,473	7	737	789	7	29	77	166	13	13	0	597	594	-1
Laotian .....		64			20			2						42	
Thai .....		91			55									36	
Vietnamese .....		341			171			3			2			165	
Other Asian .....	756	457	-40	340	276	-19	13	14	8	6	3	-50	397	164	-59
Hawaiian or Pacific Islander .....	7,511	8,532	14	1,972	2,370	20	660	756	15	125	184	47	4,754	5,222	10
Guamanian or Chamorro .....		137			65			3						69	
Hawaiian / Part-Hawaiian .....	6,248	6,901	10	1,506	1,721	14	494	547	11	115	165	43	4,133	4,468	8
Micronesia .....		249			49			53			2			145	
Samoan .....		448			251			10			8			179	
Tongan .....		58			17						1			40	
Other Pacific Islander .....	1,263	487	-61	466	183	-61	166	131	-21	10	7	-30	621	166	-73
Mixed Pacific Islander .....		252			84			12			1			155	
Mixed Asian / Pacific Islander .....	1,830	2,280	25	823	1,021	24	67	91	36	26	30	15	914	1,138	25
Hispanic .....	1,059	1,089	3	311	463	49	63	92	46	18	22	22	667	512	-23
Puerto Rican .....	238	64	-73	52	21	-60	6	4	-33	3	2	-33	177	37	-79
Other Hispanic .....	446	884	98	147	399	171	10	44	340	9	18	100	280	423	51
Mixed Hispanic .....	375	141	-62	112	43	-62	47	44	-6	6	2	-67	210	52	-75
Caucasian .....	9,574	10,883	14	4,026	5,454	35	1,023	1,297	27	194	202	4	4,331	3,930	-9
Middle Easterner .....	43	16	-63	28	10	-64				3			12	6	-50
Portuguese .....	468	179	-62	90	35	-61	43	33	-23	9	5	-44	326	106	-67
Other Caucasian .....	9,063	10,688	18	3,908	5,409	38	980	1,264	29	182	197	8	3,993	3,818	-4

TABLE 7 (cont.)

CHARACTERISTIC	TOTAL			UH AT MĀNOA			UH AT HILO			UH-WEST O'AHU			COMMUNITY COLLEGES		
	2001	2005	% Chg	2001	2005	% Chg	2001	2005	% Chg	2001	2005	% Chg	2001	2005	% Chg
African American .....	569	573	1	144	232	61	28	45	61	9	16	78	388	280	-28
American Indian / Alaska Native .....	146	220	51	38	79	108	21	28	33		5		87	108	24
Mixed Ethnic Background .....	5,193	5,762	11	1,687	2,064	22	373	368	-1	89	106	19	3,044	3,224	6
No Response .....	503	1,250		290	570			6			3		213	671	

1/ Students whose primary campus, as defined in Banner / ODS, is not the campus at which registered. Characteristic added beginning Fall 2003.

2/ Includes U.S. Military, U.S. Possessions, Commonwealths and republics within the Compact of Free Association.

3/ Migration to new student registration system in 2002-03 resulted in a large increase in records with invalid data.

4/ Western Undergraduate Exchange students, who pay 1.5 times the resident tuition.

5/ Shows headcounts by world geographic region for non-U.S. citizens only.

6/ Shows sum of students with student and other visas; excludes resident aliens.

7/ Includes first-time freshmen only at UH-Manoa and UH-Hilo; includes all first-time students at the UH Community Colleges.

8/ Includes U.S. Possessions, Commonwealths and republics within the Compact of Free Association.

9/ Includes GED recipients, Home Schoolers, Youth Challenge Program completers and those who did not graduate from high school.

10/ Breakout by previous college not available for Fall 2005.

11/ New item added to the UH Common Application form in Fall 2005. Shows sum of all those who indicated Hawaiian ancestry plus those who either did not answer the question or answered in the negative but who indicated Hawaiian ethnicity.

12/ With new registration system, ethnic categories have been expanded. However, students already enrolled are reported under the ethnic category previously selected.

Note: Percentage change not computed for "No Data" categories, or where one figure is blank.