

FALL ENROLLMENT REPORT
UNIVERSITY OF HAWAI'I
FALL 2008

Institutional Research Office
University of Hawai'i
February 2009

File Reference: Management and Planning Support Folder, Enrollment

Reports available online at: <http://www.hawaii.edu/iro/maps.htm>

THE UNIVERSITY OF HAWAII HEADCOUNT ENROLLMENT, FALL 2008

Headcount enrollment at the University of Hawai'i measured 53,526 in Fall 2008, a 6.1% increase from the previous fall semester and an all-time record high. Full-Time Equivalent (FTE) enrollment increased by 5.1% from the previous fall semester to 36,267, another record high.

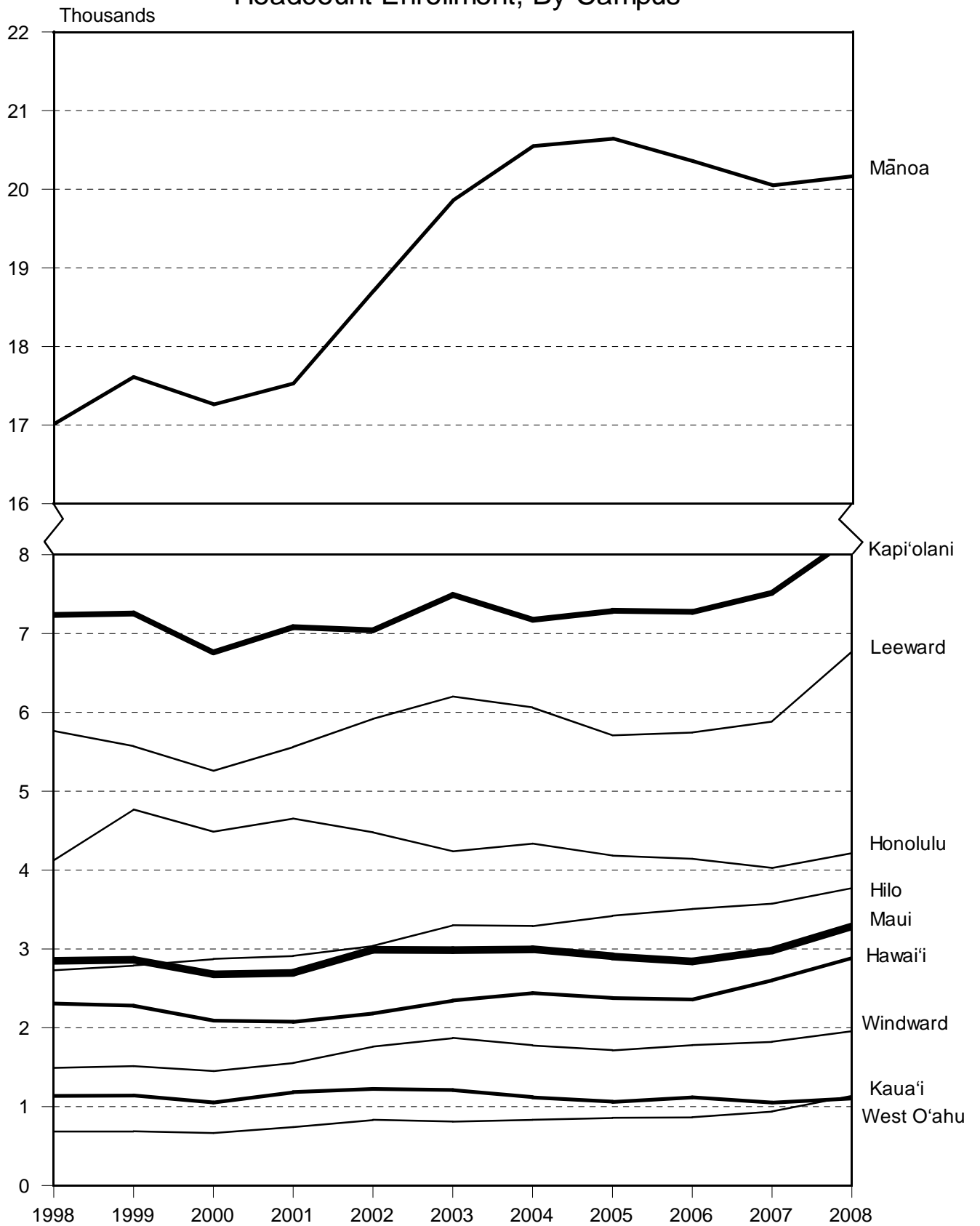
All ten campuses experienced enrollment increases in Fall 2008. UH-West O'ahu posted the largest enrollment increase in percentage terms of any campus in Fall 2008 at 21.3%. Leeward CC was next at 15%, followed by Hawai'i CC (10.8%), Maui CC (10.3%), Kapi'olani CC (9.4%), and Windward CC (7.4%). The remaining campuses experienced slight to modest percentage increases: UH Hilo (5.6%), Kauai CC (5%), Honolulu CC (4.7%) and UH Mānoa (0.6%).

In 2002-03, the University of Hawai'i campuses migrated to a new student registration system. During that process, aggregations for certain items in the report tables such as citizenship have changed. Data for certain other items may show discontinuities due to changes in data processing. The reader is advised to exercise caution when examining trends or percentage data over time.

Other Fall 2008 enrollment highlights:

- Enrollment of students from the U.S. mainland, as measured by permanent home address, has grown from 1,873 in Fall 1998 to 4,956 in Fall 2008, an increase of nearly 165%. In Fall 1998, mainland students accounted for 4.1% of total enrollment; the figure has been steady at nearly 10% since Fall 2004.
- The Hawaiian Ancestry characteristic is a new item. Effective Fall 2005, students were asked on the admissions application to indicate Hawaiian ancestry. The figures given in the tables show the aggregate number of students who indicated "Yes" to Hawaiian ancestry or who selected Hawaiian ethnicity. The total for the UH system measured 19.8% of enrollment in Fall 2008.
- The mean age of students measured 25.2 years in Fall 2008, the lowest mean age since Fall 1984. Full-Time enrollment declined slightly to 53.9% of enrollment, while the enrollment of men and women remained steady for the third consecutive fall semester at 42.4% and 57.3%, respectively.
- With the migration to the Banner registration system, ethnic reporting has been expanded to include additional categories. However, only incoming students are included in these new categories; students already enrolled are shown under the ethnic category previously selected. The UH student body is ethnically diverse and continues to diversify.

Figure 1
 University of Hawai'i
 Headcount Enrollment, By Campus



University of Hawai'i, All Campuses, Fall Semesters

Figure 2
Headcount and FTE Enrollment

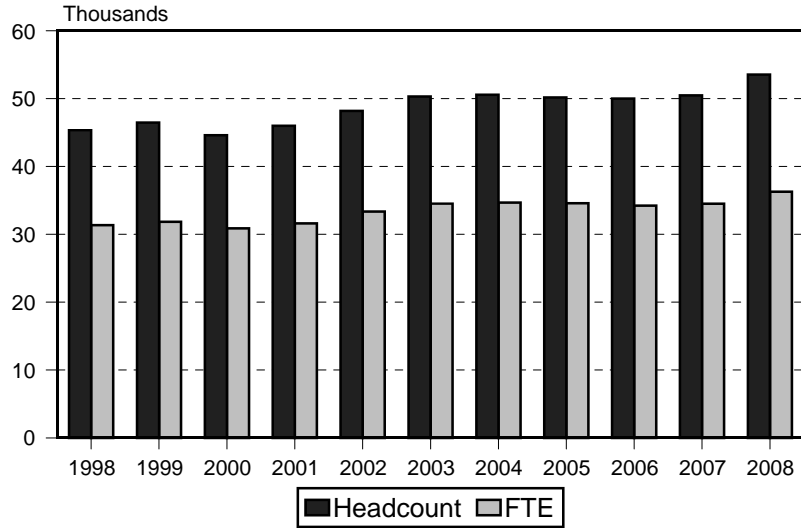


Figure 4
FTE / Headcount Ratio

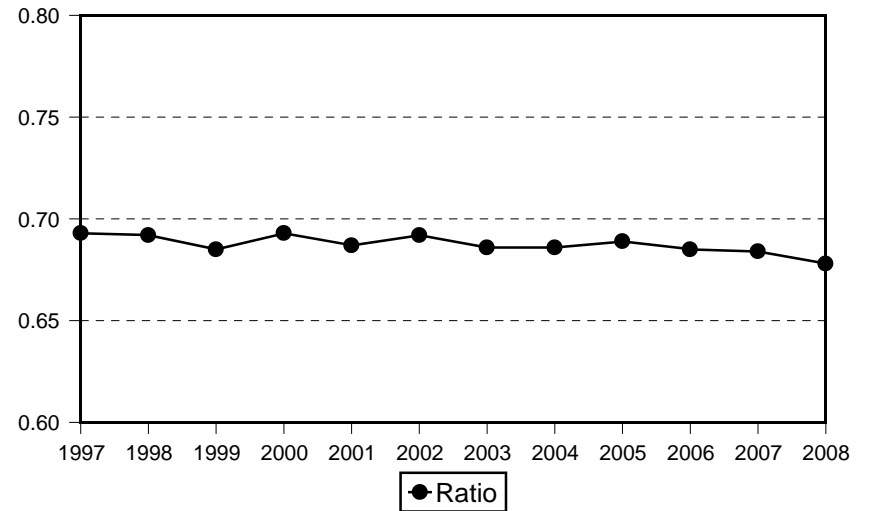
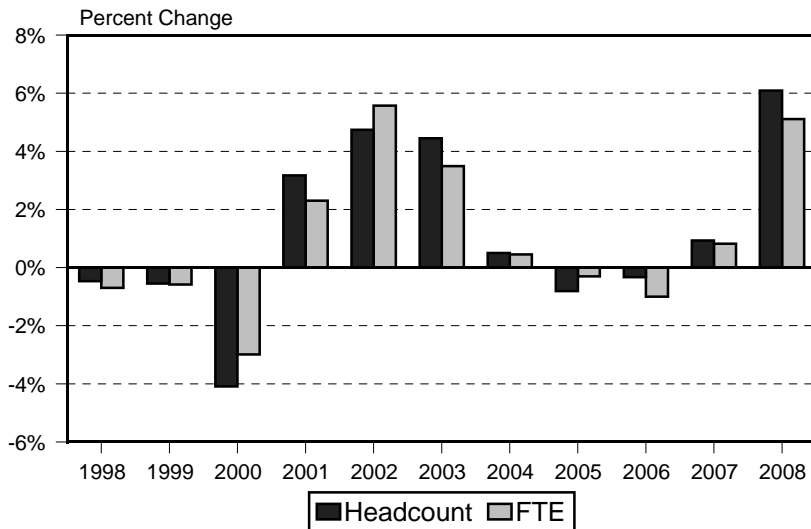
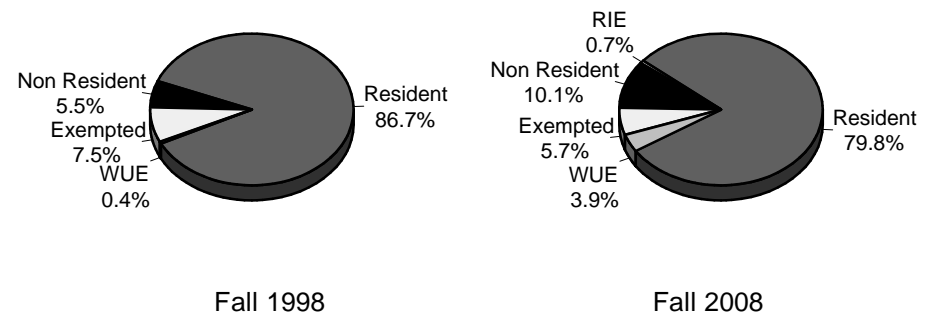


Figure 3
Percentage Change in Enrollment



Percentage change for Fall 1999 excludes continuing education credit enrollment.

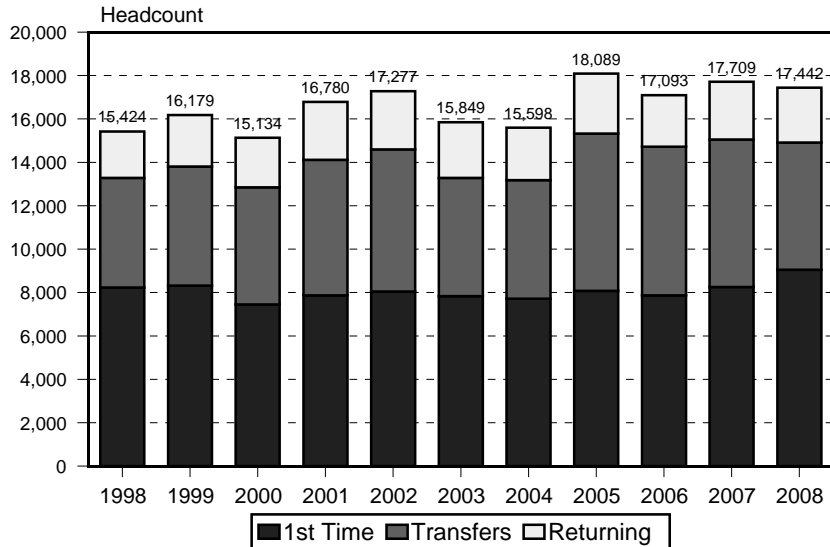
Figure 5
Enrollment by Tuition Status



Revised Institutional Exempt (RIE) was added in Fall 2007.

University of Hawai'i, All Campuses, Fall Semesters

Figure 6
Entering Undergraduate Enrollment



Prior to Fall 2008, counts included Home-Based at Other UH and No Data for West O'ahu and UHCCs.

Figure 8
Non-Resident Enrollment

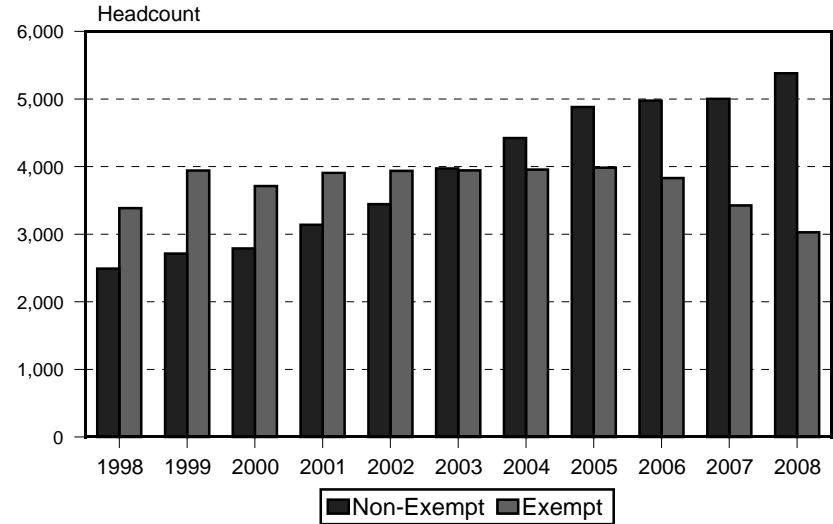


Figure 7
Western Undergraduate Exchange Enrollment

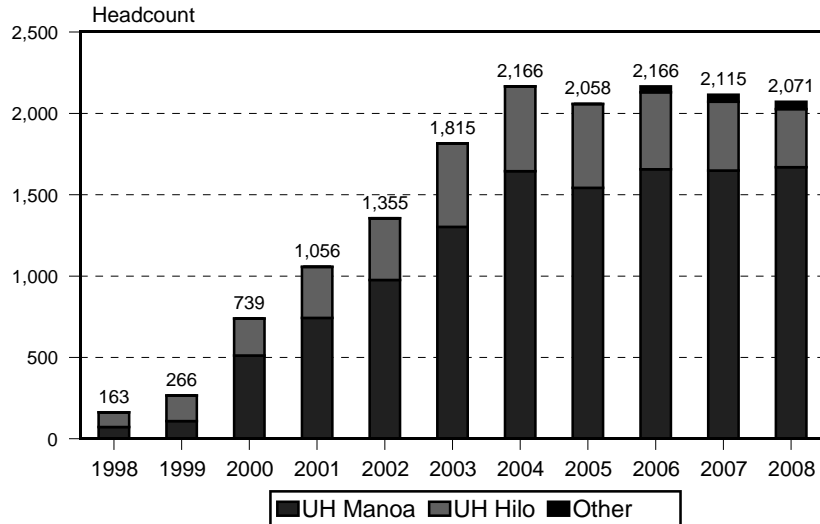


Figure 9
Enrollment by Permanent Home Address

