

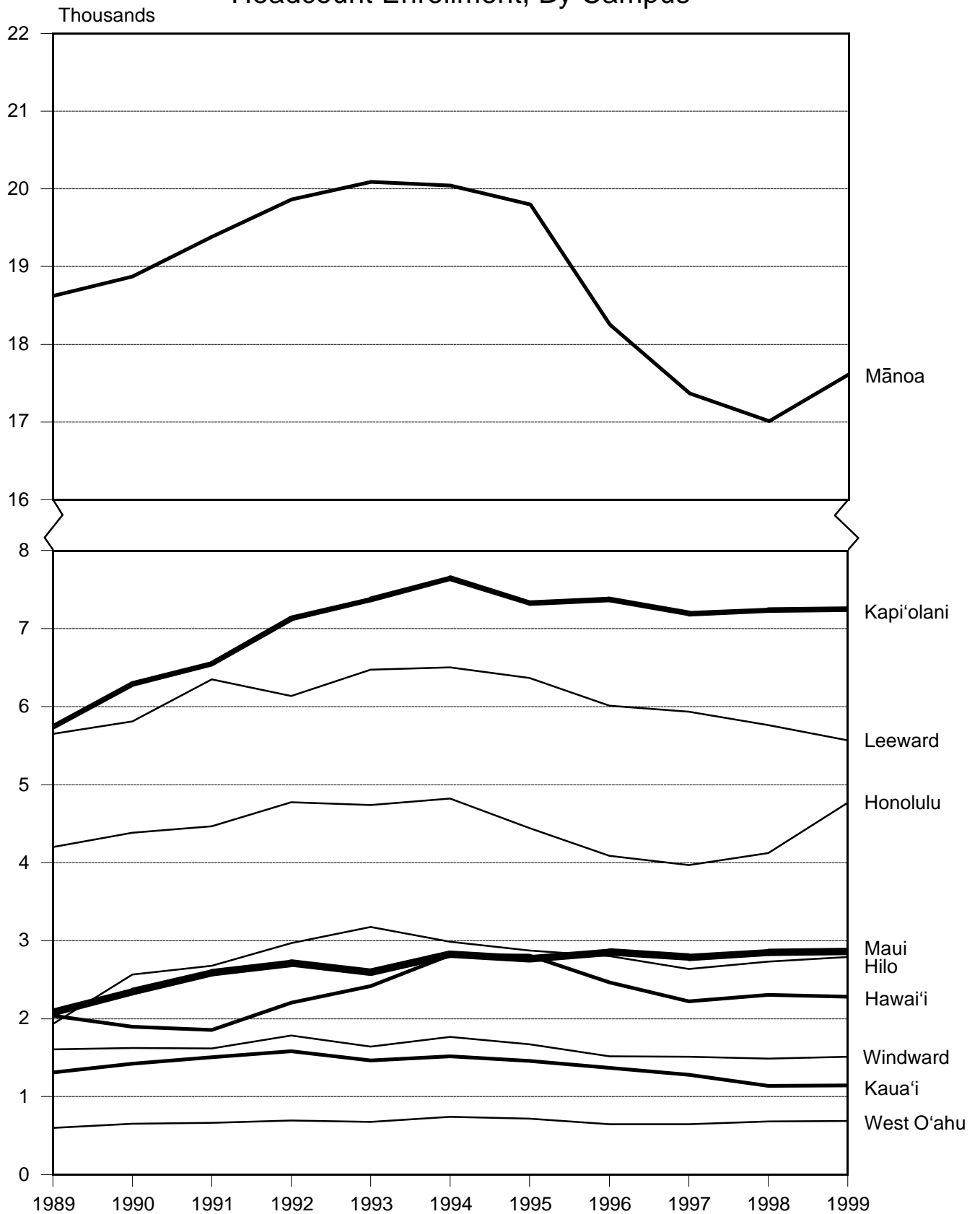
FALL ENROLLMENT REPORT
UNIVERSITY OF HAWAI'I
FALL 1999

Institutional Research Office
University of Hawai'i
December 1999

File Reference: Management and Planning Support Folder, Enrollment

Reports available online at: <http://www.hawaii.edu/iro/maps.htm>

Figure 1
 University of Hawai'i
 Headcount Enrollment, By Campus



University of Hawai'i, All Campuses, Fall Semesters

Figure 2
Headcount and FTE Enrollment

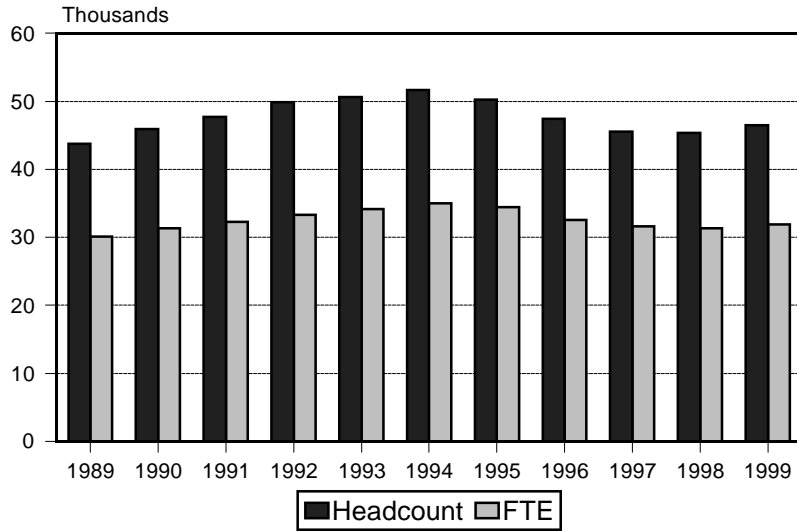


Figure 4
FTE / Headcount Ratio

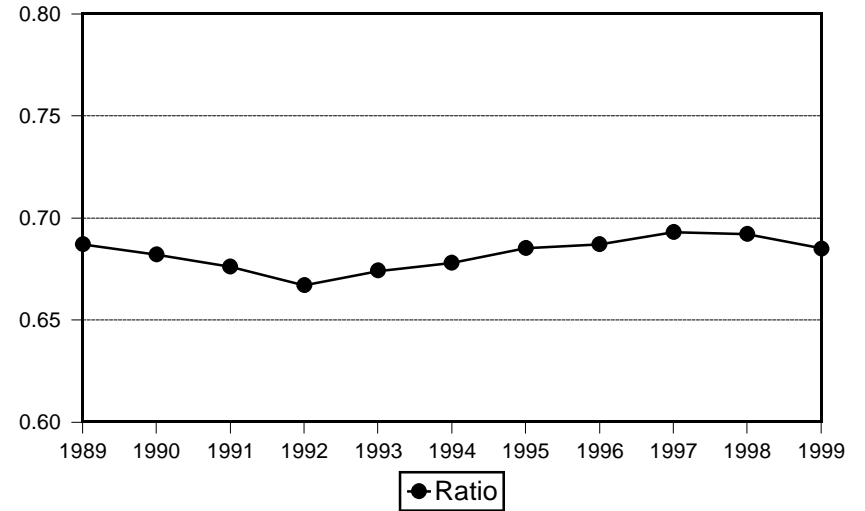


Figure 3
Percentage Change in Enrollment

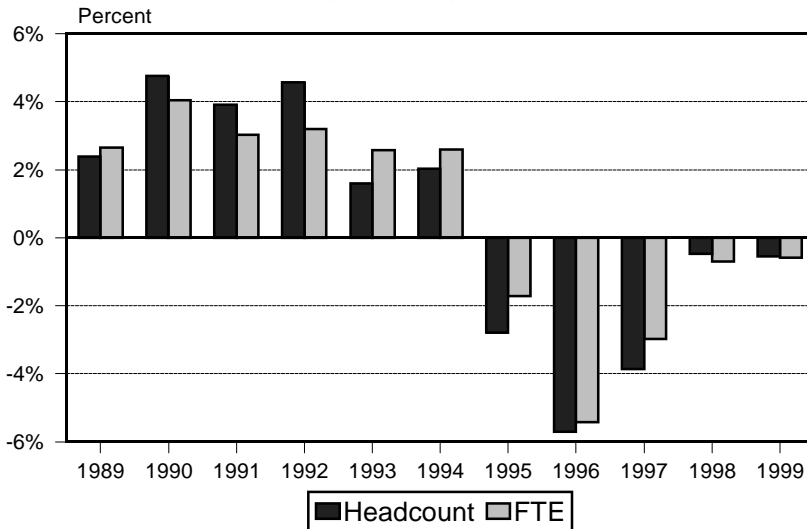
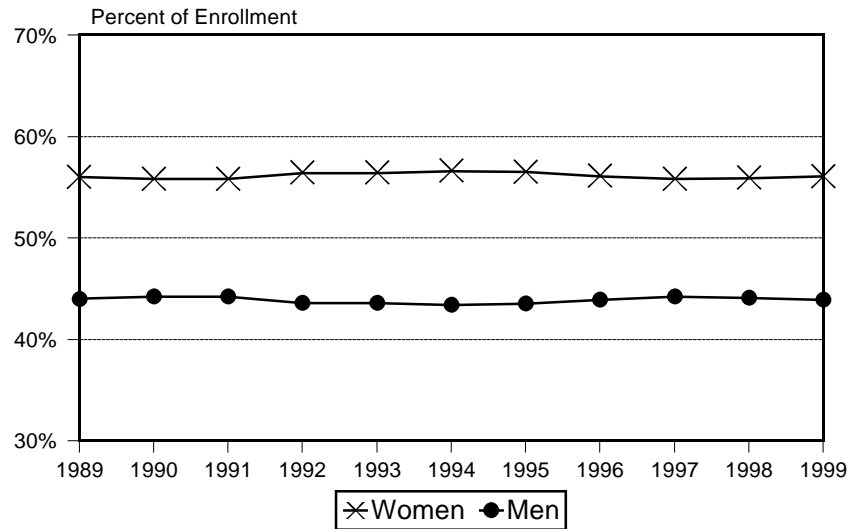


Figure 5
Enrollment by Gender



Percentage change for Fall 1999 excludes continuing education credit enrollment.

University of Hawai'i, All Campuses, Fall Semesters

Figure 6
Enrollment By Attendance Status

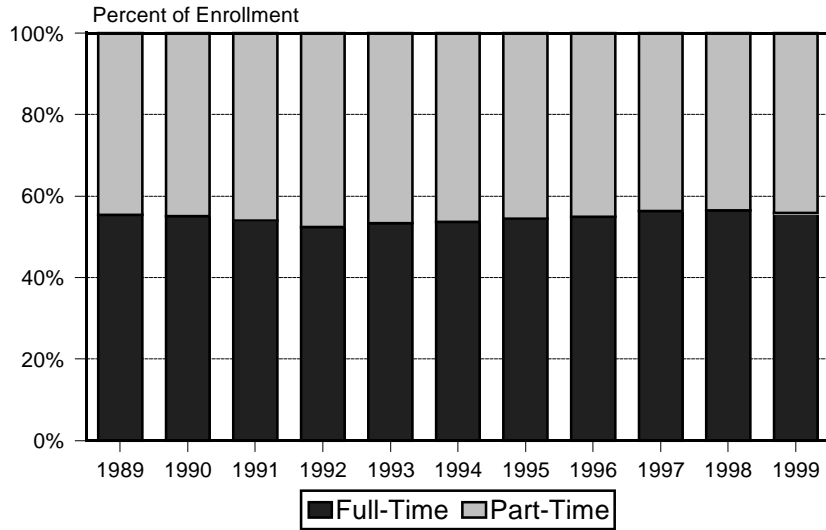


Figure 8
Mean Age

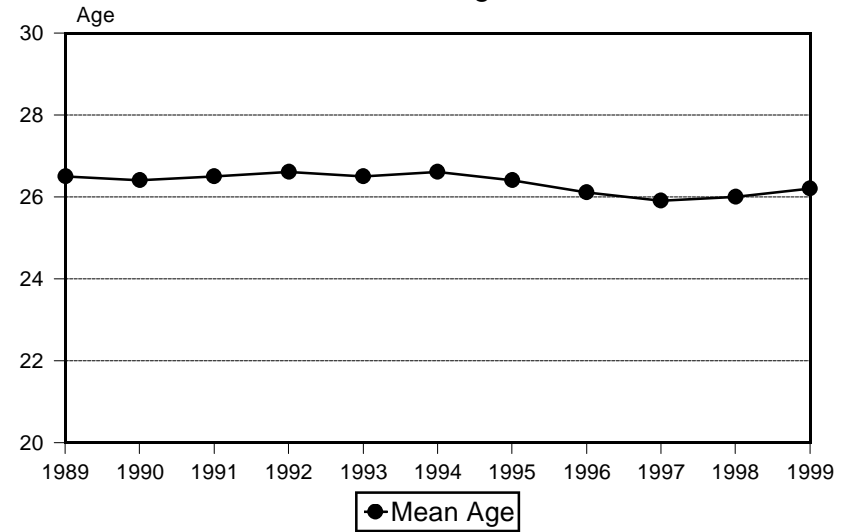


Figure 7
Enrollment of Entering Students

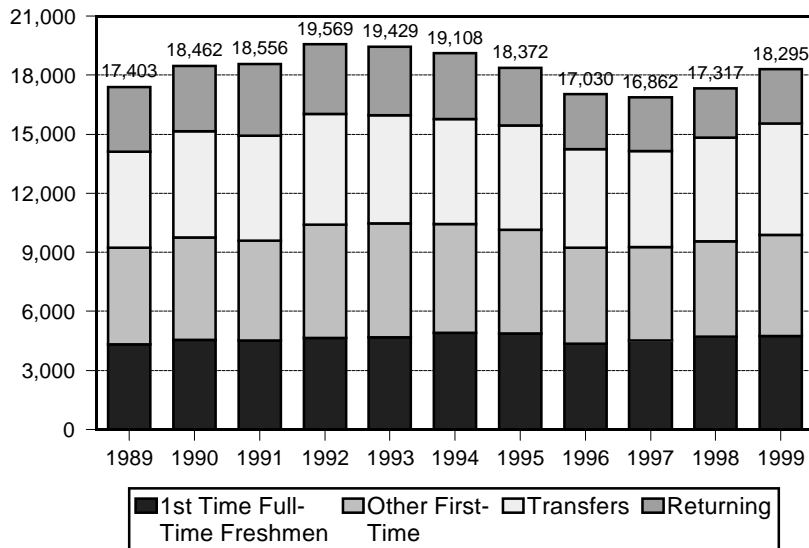
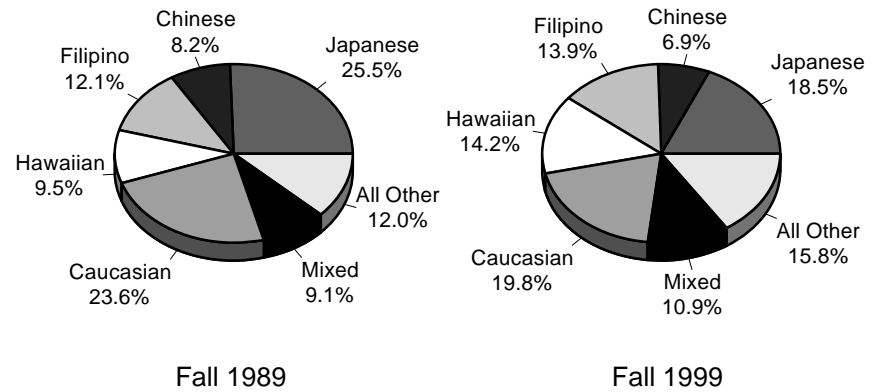


Figure 9
Enrollment by Ethnicity



University of Hawai'i, By Campus, Fall 1999

Figure 10
Enrollment By Classified / Unclassified

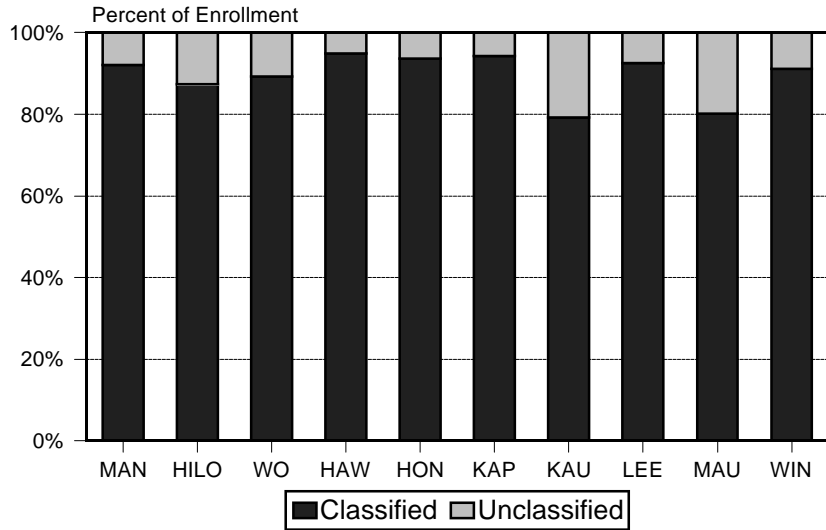


Figure 12
Average SSH Taken Per Student

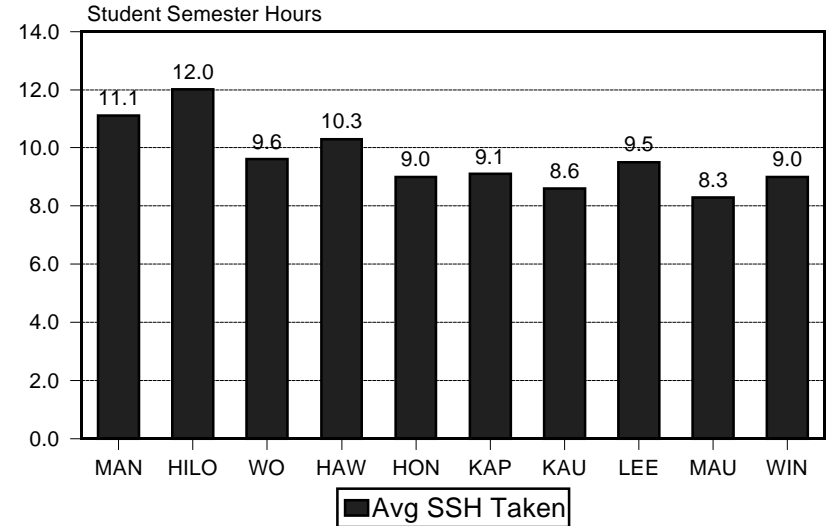


Figure 11
Enrollment By Attendance Status

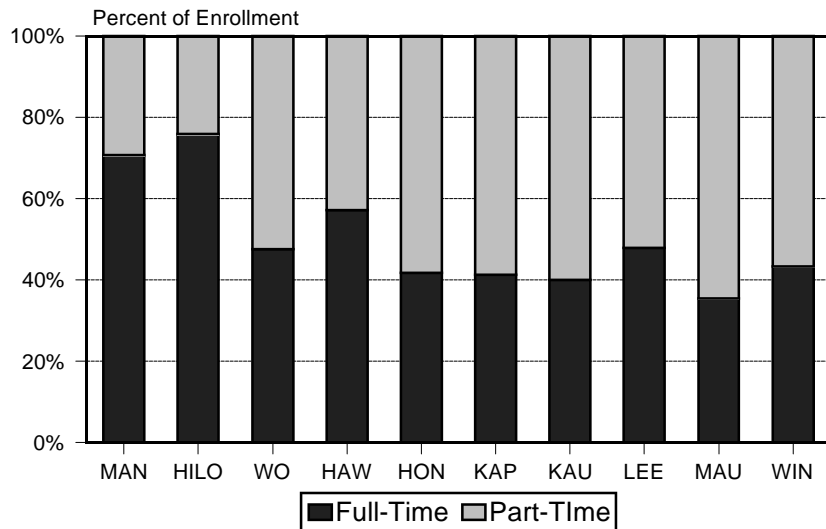


Figure 13
Enrollment of Entering Students

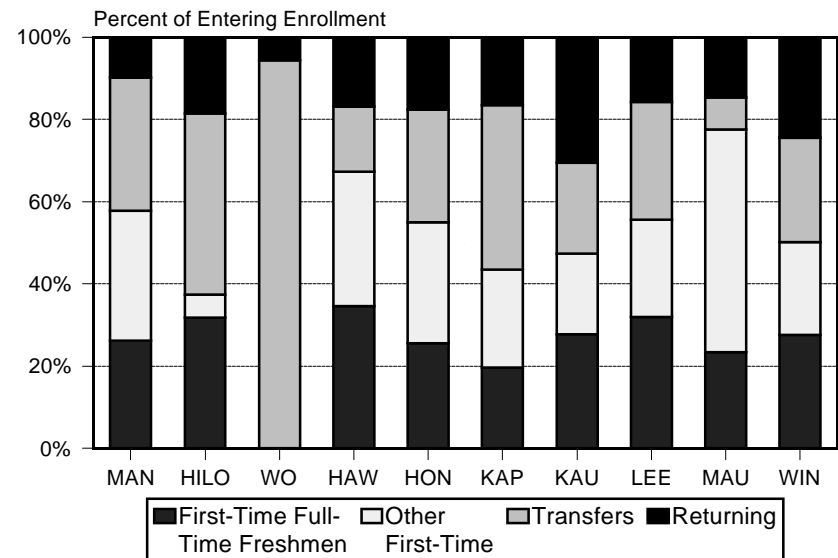


TABLE 1
HEADCOUNT ENROLLMENT OF CREDIT STUDENTS, BY CAMPUS
UNIVERSITY OF HAWAI'I
FALL 1989 TO FALL 1999

FALL SEMESTER	TOTAL		UH		UH		UH		UH COMMUNITY COLLEGES															
			AT MANOA		AT HILO 1/		WEST O'AHU		SUBTOTAL		HAWAI'I 1/		HONOLULU		KAPI'OLANI		KAUA'I		LEEWARD		MAUI		WINDWARD	
			No.	Pct Chg	No.	Pct Chg	No.	Pct Chg	No.	Pct Chg	No.	Pct Chg	No.	Pct Chg	No.	Pct Chg	No.	Pct Chg	No.	Pct Chg	No.	Pct Chg	No.	Pct Chg
1989	43,785	2.4	18,622	0.8	1,935	9.1	601	22.2	22,627	2.7	2,038	9.5	4,199	-2.4	5,741	2.5	1,313	6.0	5,652	3.8	2,078	2.9	1,606	3.1
1990	45,870	4.8	18,874	1.4	2,564	32.5	652	8.5	23,780	5.1	1,896	-7.0	4,383	4.4	6,292	9.6	1,424	8.5	5,812	2.8	2,346	12.9	1,627	1.3
1991	47,668	3.9	19,383	2.7	2,681	4.6	667	2.3	24,937	4.9	1,857	-2.1	4,466	1.9	6,550	4.1	1,507	5.8	6,351	9.3	2,590	10.4	1,616	-0.7
1992	49,851	4.6	19,865	2.5	2,966	10.6	692	3.7	26,328	5.6	2,207	18.8	4,774	6.9	7,132	8.9	1,580	4.8	6,135	-3.4	2,713	4.7	1,787	10.6
1993	50,647	1.6	20,090	1.1	3,174	7.0	676	-2.3	26,707	1.4	2,415	9.4	4,741	-0.7	7,375	3.4	1,464	-7.3	6,473	5.5	2,597	-4.3	1,642	-8.1
1994	51,677	2.0	20,041	-0.2	2,987	-5.9	744	10.1	27,905	4.5	2,815	16.6	4,824	1.8	7,648	3.7	1,518	3.7	6,507	0.5	2,826	8.8	1,767	7.6
1995	50,242	-2.8	19,801	-1.2	2,872	-3.9	716	-3.8	26,853	-3.8	2,811	-0.1	4,445	-7.9	7,329	-4.2	1,461	-3.8	6,368	-2.1	2,765	-2.2	1,674	-5.3
1996	47,379	-5.7	18,252	-7.8	2,800	-2.5	648	-9.5	25,679	-4.4	2,463	-12.4	4,090	-8.0	7,373	0.6	1,367	-6.4	6,014	-5.6	2,854	3.2	1,518	-9.3
1997.....	45,551	-3.9	17,365	-4.9	2,639	-5.8	648	0.0	24,899	-3.0	2,221	-9.8	3,970	-2.9	7,189	-2.5	1,283	-6.1	5,936	-1.3	2,787	-2.3	1,513	-0.3
1998	45,337	-0.5	17,013	-2.0	2,730	3.4	685	5.7	24,909	0.0	2,308	3.9	4,124	3.9	7,236	0.7	1,136	-11.5	5,765	-2.9	2,849	2.2	1,491	-1.5
1999 2/	46,479	NA	17,612	NA	2,790	NA	687	0.3	25,390	NA	2,279	-1.3	4,769	NA	7,254	0.2	1,142	0.5	5,570	-3.4	2,862	0.5	1,514	1.5

1/ Beginning in Fall 1991, Hawai'i Community College was transferred organizationally from UH Hilo to the UH Community College System. Data have been adjusted accordingly.

2/ Includes continuing education credit students at UH Manoa, UH Hilo and Honolulu CC, effective Fall 1999. Percentage change calculations for these campuses, and for both the UH and UHCC systems, are incomparable to prior years.

Note: Data have been updated to include special students (concurrents, early admits and auditors) for all years shown.

TABLE 2
 FTE ENROLLMENT OF CREDIT STUDENTS, BY CAMPUS
 UNIVERSITY OF HAWAII
 FALL 1989 TO FALL 1999

FALL SEMESTER	TOTAL		UH		UH		UH		UH COMMUNITY COLLEGES															
			AT MANOA		AT HILO 1/		WEST O'AHU		SUBTOTAL		HAWAII 1/		HONOLULU		KAPI'OLANI		KAUA'I		LEEWARD		MAUI		WINDWARD	
			No.	Pct Chg	No.	Pct Chg	No.	Pct Chg	No.	Pct Chg	No.	Pct Chg	No.	Pct Chg	No.	Pct Chg	No.	Pct Chg	No.	Pct Chg	No.	Pct Chg	No.	Pct Chg
1989	30,077	2.7	14,473	1.5	1,463	9.8	346	21.4	13,795	2.8	1,544	9.3	2,678	-2.2	3,453	5.1	687	10.5	3,473	2.9	1,151	3.8	809	-7.6
1990	31,294	4.0	14,561	0.6	1,975	35.0	383	10.7	14,375	4.2	1,403	-9.1	2,739	2.3	3,761	8.9	699	1.7	3,583	3.2	1,270	10.3	920	13.7
1991	32,239	3.0	14,943	2.6	2,037	3.1	381	-0.5	14,878	3.5	1,419	1.1	2,680	-2.2	3,882	3.2	764	9.3	3,910	9.1	1,320	3.9	903	-1.8
1992	33,272	3.2	15,242	2.0	2,097	2.9	388	1.8	15,545	4.5	1,532	8.0	2,828	5.5	4,156	7.1	840	9.9	3,774	-3.5	1,404	6.4	1,011	12.0
1993	34,128	2.6	15,522	1.8	2,334	11.3	393	1.3	15,879	2.1	1,736	13.3	2,804	-0.8	4,224	1.6	798	-5.0	3,954	4.8	1,403	-0.1	960	-5.0
1994	35,013	2.6	15,704	1.2	2,347	0.6	435	10.7	16,527	4.1	2,005	15.5	2,810	0.2	4,321	2.3	881	10.4	3,998	1.1	1,548	10.3	964	0.4
1995	34,416	-1.7	15,613	-0.6	2,289	-2.5	428	-1.6	16,086	-2.7	2,002	-0.1	2,624	-6.6	4,219	-2.4	854	-3.1	3,883	-2.9	1,544	-0.3	960	-0.4
1996	32,550	-5.4	14,358	-8.0	2,242	-2.1	387	-9.6	15,563	-3.3	1,718	-14.2	2,463	-6.1	4,334	2.7	832	-2.6	3,699	-4.7	1,610	4.3	907	-5.5
1997	31,584	-3.0	13,839	-3.6	2,174	-3.0	392	1.3	15,179	-2.5	1,586	-7.7	2,427	-1.5	4,262	-1.7	806	-3.1	3,623	-2.1	1,586	-1.5	889	-2.0
1998	31,362	-0.7	13,534	-2.2	2,214	1.8	428	9.2	15,186	0.0	1,593	0.4	2,556	5.3	4,240	-0.5	700	-13.2	3,611	-0.3	1,593	0.4	893	0.4
1999 2/ ...	31,839	NA	13,801	NA	2,260	NA	442	3.3	15,336	NA	1,564	-1.8	2,849	NA	4,331	2.1	655	-6.4	3,459	-4.2	1,573	-1.3	905	1.3

1/ Beginning in Fall 1991, Hawaii Community College was transferred organizationally from UH Hilo to the UH Community College System. Data have been adjusted accordingly.

2/ Includes continuing education credit students at UH Manoa, UH Hilo and Honolulu CC, effective Fall 1999. Percentage change calculations for these campuses, and for both the UH and UHCC systems, are incomparable to prior years.

Note: Data have been updated to include special students (concurrents, early admits and auditors) for all years shown.

TABLE 3
 SELECTED CHARACTERISTICS OF CREDIT STUDENTS
 UNIVERSITY OF HAWAI'I
 FALL 1995 TO FALL 1999

CHARACTERISTIC	Fall 1995		Fall 1996		Fall 1997		Fall 1998		Fall 1999	
	No.	V%	No.	V%	No.	V%	No.	V%	No.	V%
TOTAL	50,242	100.0	47,379	100.0	45,551	100.0	45,337	100.0	46,479	100.0
EDUCATIONAL LEVEL:										
Undergraduate	43,631	86.8	41,417	87.4	40,036	87.9	39,889	88.0	40,548	87.2
Classified	40,627	80.9	38,734	81.8	37,347	82.0	37,139	81.9	37,634	81.0
Lower Division	30,265	60.2	28,754	60.7	27,653	60.7	27,641	61.0	28,218	60.7
Freshmen	18,546	36.9	16,803	35.5	16,037	35.2	16,120	35.6	16,698	35.9
Sophomores	11,719	23.3	11,951	25.2	11,616	25.5	11,521	25.4	11,520	24.8
Upper Division	10,362	20.6	9,980	21.1	9,694	21.3	9,498	20.9	9,416	20.3
Juniors	4,172	8.3	4,021	8.5	3,956	8.7	3,793	8.4	3,713	8.0
Seniors	6,190	12.3	5,959	12.6	5,738	12.6	5,705	12.6	5,703	12.3
Unclassified	2,981	5.9	2,667	5.6	2,620	5.8	2,716	6.0	2,887	6.2
No Data	23	<0.1	16	<0.1	69	0.2	34	0.1	27	0.1
Graduate	6,580	13.1	5,944	12.5	5,506	12.1	5,445	12.0	5,923	12.7
Classified	5,303	10.6	4,830	10.2	4,557	10.0	4,552	10.0	4,807	10.3
Unclassified	1,277	2.5	1,114	2.4	949	2.1	893	2.0	1,116	2.4
No Data	31	0.1	18	<0.1	9	<0.1	3	<0.1	8	<0.1
GENDER:										
Men	21,832	43.5	20,807	43.9	20,111	44.2	20,010	44.1	20,418	43.9
Women	28,405	56.5	26,569	56.1	25,440	55.8	25,327	55.9	26,061	56.1
No Data	5	<0.1	3	<0.1						
PERMANENT HOME ADDRESS:										
Hawai'i	46,271	92.1	43,588	92.0	41,956	92.1	41,670	91.9	42,157	90.7
Other U.S.	2,352	4.7	2,272	4.8	2,174	4.8	2,207	4.9	2,738	5.9
Foreign	1,372	2.7	1,170	2.5	1,091	2.4	1,146	2.5	1,166	2.5
No Data 1/	247	0.5	349	0.7	330	0.7	314	0.7	418	0.9
TUITION STATUS:										
Resident Subtotal	43,579	86.7	41,336	87.2	39,702	87.2	39,298	86.7	39,558	85.1
Resident	42,223	84.0	40,050	84.5	38,717	85.0	38,512	84.9	38,802	83.5
Resident Converted	1,356	2.7	1,286	2.7	985	2.2	786	1.7	756	1.6
Non-Resident Subtotal	6,660	13.3	6,043	12.8	5,849	12.8	6,038	13.3	6,920	14.9
Not Exempted	2,468	4.9	2,332	4.9	2,367	5.2	2,490	5.5	2,713	5.8
West Undergrad Exchange 2/					89	0.2	163	0.4	266	0.6

Table 3 (cont.)

CHARACTERISTIC	Fall 1995		Fall 1996		Fall 1997		Fall 1998		Fall 1999	
	No.	V%	No.	V%	No.	V%	No.	V%	No.	V%
Exempted	4,192	8.3	3,711	7.8	3,393	7.4	3,385	7.5	3,941	8.5
Military	1,387	2.8	1,252	2.6	1,154	2.5	1,133	2.5	1,736	3.7
Faculty / Staff	635	1.3	602	1.3	477	1.0	360	0.8	238	0.5
Institutional	928	1.8	756	1.6	688	1.5	664	1.5	675	1.5
Student Exchange	167	0.3	169	0.4	177	0.4	236	0.5	321	0.7
Pacific-Asian	682	1.4	551	1.2	542	1.2	636	1.4	671	1.4
East-West Center	220	0.4	182	0.4	151	0.3	161	0.4	122	0.3
Ethnic Hawaiian	173	0.3	199	0.4	204	0.4	195	0.4	178	0.4
No Data	3	<0.1					1	<0.1	1	<0.1
MEAN AGE OF STUDENTS (in years)	26.4		26.1		25.9		26.0		26.2	
AGE:										
Less than 18 years.....	1,303	2.6	1,253	2.6	1,247	2.7	1,269	2.8	1,267	2.7
18 to 24 years	28,118	56.0	26,954	56.9	26,264	57.7	26,103	57.6	26,447	56.9
25 years and over	20,821	41.4	19,172	40.5	18,040	39.6	17,965	39.6	18,765	40.4
CITIZENSHIP:										
United States	44,412	88.4	42,167	89.0	40,646	89.2	40,439	89.2	41,670	89.7
Foreign	5,671	11.3	5,109	10.8	4,832	10.6	4,806	10.6	4,732	10.2
No Data	159	0.3	103	0.2	73	0.2	92	0.2	77	0.2
ATTENDANCE STATUS:										
Full-Time	27,400	54.5	26,084	55.1	25,637	56.3	25,636	56.5	25,958	55.8
Part-Time	22,683	45.1	21,123	44.6	19,720	43.3	19,449	42.9	20,284	43.6
Zero SSH 3/	128	0.3	154	0.3	185	0.4	249	0.5	229	0.5
No Data	31	0.1	18	<0.1	9	<0.1	3	<0.1	8	<0.1
TOTAL SSH TAKEN.....	503,389		476,816		463,114		460,080		466,317	
Full-Time	373,033		357,554		352,198		351,351		353,943	
Part-Time	129,991		119,069		110,746		108,639		112,277	
No Data	365		193		170		90		97	
AVERAGE SSH TAKEN 4/	10.0		10.1		10.2		10.2		10.1	
Full-Time	13.6		13.7		13.7		13.7		13.6	
Part-Time	5.7		5.6		5.6		5.6		5.5	
No Data	11.8		10.7		18.9		30.0		12.1	
REGISTRATION STATUS:										
Continuing	31,870	63.4	30,345	64.0	28,688	63.0	28,014	61.8	28,183	60.6
Returning	2,926	5.8	2,774	5.9	2,717	6.0	2,495	5.5	2,746	5.9
First-Time	10,158	20.2	9,239	19.5	9,258	20.3	9,575	21.1	9,885	21.3
Transfer	5,288	10.5	5,017	10.6	4,887	10.7	5,247	11.6	5,664	12.2
No Data			4	<0.1	1	<0.1	6	<0.1	1	<0.1

Table 3 (cont.)

CHARACTERISTIC	Fall 1995		Fall 1996		Fall 1997		Fall 1998		Fall 1999	
	No.	V%	No.	V%	No.	V%	No.	V%	No.	V%
ENTERING STUDENTS 5/	18,372	36.6	17,030	35.9	16,862	37.0	17,317	38.2	18,295	39.4
First-Time Students	10,158	20.2	9,239	19.5	9,258	20.3	9,575	21.1	9,885	21.3
Full-Time Freshmen	4,882	9.7	4,368	9.2	4,509	9.9	4,731	10.4	4,761	10.2
Other Undergraduates	3,673	7.3	3,450	7.3	3,391	7.4	3,496	7.7	3,565	7.7
Graduates	1,603	3.2	1,421	3.0	1,358	3.0	1,348	3.0	1,559	3.4
Transfers	5,288	10.5	5,017	10.6	4,887	10.7	5,247	11.6	5,664	12.2
From Other UH Campuses	3,054	6.1	2,975	6.3	2,934	6.4	2,921	6.4	3,074	6.6
From Non-UH Campuses	2,234	4.4	2,042	4.3	1,953	4.3	2,326	5.1	2,590	5.6
Returning	2,926	5.8	2,774	5.9	2,717	6.0	2,495	5.5	2,746	5.9
ETHNICITY:										
Asian / Pacific Islander	32,730	65.1	30,922	65.3	30,091	66.1	29,985	66.1	30,060	64.7
Japanese	9,825	19.6	9,278	19.6	8,839	19.4	8,794	19.4	8,602	18.5
Chinese	3,947	7.9	3,572	7.5	3,382	7.4	3,344	7.4	3,220	6.9
Korean	1,381	2.7	1,336	2.8	1,311	2.9	1,336	2.9	1,374	3.0
Filipino	7,507	14.9	7,118	15.0	6,780	14.9	6,585	14.5	6,467	13.9
Hawn / Part-Hawn	6,386	12.7	6,101	12.9	6,214	13.6	6,306	13.9	6,619	14.2
Pacific Islander	1,057	2.1	1,022	2.2	1,025	2.3	1,020	2.2	1,106	2.4
Other Asian	1,144	2.3	1,027	2.2	930	2.0	925	2.0	922	2.0
Mixed Asian / Pac Islander	1,483	3.0	1,468	3.1	1,610	3.5	1,675	3.7	1,750	3.8
Hispanic	900	1.8	847	1.8	764	1.7	815	1.8	926	2.0
Puerto Rican	237	0.5	204	0.4	199	0.4	198	0.4	222	0.5
Other Hispanic	378	0.8	364	0.8	314	0.7	336	0.7	370	0.8
Mixed Hispanic	285	0.6	279	0.6	251	0.6	281	0.6	334	0.7
Caucasian	10,309	20.5	9,539	20.1	8,755	19.2	8,587	18.9	9,194	19.8
Portuguese	594	1.2	541	1.1	500	1.1	535	1.2	490	1.1
Other Caucasian	9,715	19.3	8,998	19.0	8,255	18.1	8,052	17.8	8,704	18.7
African American	487	1.0	424	0.9	453	1.0	446	1.0	580	1.2
Amer Indian / Alaskan Native	174	0.3	154	0.3	129	0.3	135	0.3	147	0.3
Mixed Ethnic Background	4,879	9.7	4,843	10.2	4,847	10.6	4,858	10.7	5,053	10.9
No Response	763	1.5	650	1.4	512	1.1	511	1.1	519	1.1

1/ May include some "Foreign" for the UH Community Colleges.

2/ Western Undergraduate Exchange students, who pay 1.5 times the resident tuition. Category added Fall 1997.

3/ Students with zero SSH are students auditing courses for no credit, attending remedial non-credit courses or waiting for courses not currently offered (UH Community Colleges only).

4/ Average SSH calculation excludes students with zero SSH.

5/ Entering students are defined as those with registration status of first-time, transfer or returning.

TABLE 4
 SELECTED CHARACTERISTICS OF CREDIT STUDENTS, BY UNIT
 UNIVERSITY OF HAWAI'I
 FALL 1999

CHARACTERISTIC	TOTAL		UH AT MANOA		UH AT HILO		UH WEST O'AHU		COMMUNITY COLLEGES	
	No.	V%	No.	V%	No.	V%	No.	V%	No.	V%
TOTAL	46,479	100.0	17,612	100.0	2,790	100.0	687	100.0	25,390	100.0
EDUCATIONAL LEVEL:										
Undergraduate	40,548	87.2	11,931	67.7	2,542	91.1	685	99.7	25,390	100.0
Classified	37,634	81.0	11,458	65.1	2,368	84.9	613	89.2	23,195	91.4
Lower Division	28,218	60.7	3,944	22.4	1,079	38.7			23,195	91.4
Freshmen	16,698	35.9	1,925	10.9	567	20.3			14,206	56.0
Sophomores	11,520	24.8	2,019	11.5	512	18.4			8,989	35.4
Upper Division	9,416	20.3	7,514	42.7	1,289	46.2	613	89.2		
Juniors	3,713	8.0	2,761	15.7	576	20.6	376	54.7		
Seniors	5,703	12.3	4,753	27.0	713	25.6	237	34.5		
Unclassified	2,887	6.2	473	2.7	174	6.2	72	10.5	2,168	8.5
No Data	27	0.1							27	0.1
Graduate	5,923	12.7	5,673	32.2	248	8.9	2	0.3		
Classified	4,807	10.3	4,741	26.9	66	2.4				
Unclassified	1,116	2.4	932	5.3	182	6.5	2	0.3		
No Data	8	<0.1	8	<0.1						
GENDER:										
Men	20,418	43.9	7,783	44.2	1,120	40.1	209	30.4	11,306	44.5
Women	26,061	56.1	9,829	55.8	1,670	59.9	478	69.6	14,084	55.5
PERMANENT HOME ADDRESS:										
Hawai'i	42,157	90.7	14,658	83.2	2,234	80.1	685	99.7	24,580	96.8
O'ahu	31,522	67.8	12,754	72.4	248	8.9	626	91.1	17,894	70.5
Honolulu	14,764	31.8	6,965	39.5	63	2.3	118	17.2	7,618	30.0
Leeward	12,177	26.2	3,997	22.7	119	4.3	457	66.5	7,604	29.9
Windward	4,581	9.9	1,792	10.2	66	2.4	51	7.4	2,672	10.5
Hawai'i	4,877	10.5	724	4.1	1,805	64.7	8	1.2	2,340	9.2
Kaua'i	1,798	3.9	386	2.2	56	2.0	15	2.2	1,341	5.3
Maui County	3,957	8.5	794	4.5	125	4.5	36	5.2	3,002	11.8
No Data	3	<0.1							3	<0.1
Other than Hawai'i	3,904	8.4	2,821	16.0	552	19.8			531	2.1
U.S. Mainland	2,340	5.0	1,575	8.9	375	13.4			390	1.5
U.S. Possessions	398	0.9	191	1.1	87	3.1			120	0.5
Foreign	1,166	2.5	1,055	6.0	90	3.2			21	0.1
No Data 1/	418	0.9	133	0.8	4	0.1	2	0.3	279	1.1

Table 4 (cont.)

CHARACTERISTIC	TOTAL		UH AT MANOA		UH AT HILO		UH WEST O'AHU		COMMUNITY COLLEGES	
	No.	V%	No.	V%	No.	V%	No.	V%	No.	V%
TUITION STATUS:										
Resident Subtotal	39,558	85.1	13,809	78.4	2,161	77.5	624	90.8	22,964	90.4
Resident	38,802	83.5	13,277	75.4	2,116	75.8	616	89.7	22,793	89.8
Resident Converted	756	1.6	532	3.0	45	1.6	8	1.2	171	0.7
Non-Resident Subtotal	6,920	14.9	3,803	21.6	629	22.5	62	9.0	2,426	9.6
Not Exempted	2,713	5.8	1,760	10.0	250	9.0	3	0.4	700	2.8
West Undergrad Exchange 2/	266	0.6	109	0.6	157	5.6				
Exempted	3,941	8.5	1,934	11.0	222	8.0	59	8.6	1,726	6.8
Military	1,736	3.7	364	2.1	6	0.2	55	8.0	1,311	5.2
Faculty / Staff	238	0.5	196	1.1	3	0.1			39	0.2
Institutional	675	1.5	259	1.5	137	4.9	3	0.4	276	1.1
Student Exchange	321	0.7	272	1.5	45	1.6			4	<0.1
Pacific-Asian	671	1.4	659	3.7	9	0.3			3	<0.1
East-West Center	122	0.3	118	0.7	3	0.1			1	<0.1
Ethnic Hawaiian	178	0.4	66	0.4	19	0.7	1	0.1	92	0.4
No Data	1	<0.1					1	0.1		
AGE:										
Mean Age	26.2		26.1		26.4		31.9		26.1	
Under 18	1,267	2.7	306	1.7	103	3.7	2	0.3	856	3.4
18-19	9,710	20.9	2,922	16.6	619	22.2	1	0.1	6,168	24.3
20-21	8,259	17.8	3,258	18.5	527	18.9	34	4.9	4,440	17.5
22-24	8,478	18.2	3,935	22.3	494	17.7	160	23.3	3,889	15.3
25-29	7,200	15.5	3,056	17.4	343	12.3	165	24.0	3,636	14.3
30-34	3,885	8.4	1,533	8.7	158	5.7	98	14.3	2,096	8.3
35-59	7,390	15.9	2,530	14.4	532	19.1	220	32.0	4,108	16.2
60 and over	285	0.6	70	0.4	14	0.5	7	1.0	194	0.8
No Data	5	<0.1	2	<0.1					3	<0.1
CITIZENSHIP:										
United States	41,670	89.7	15,382	87.3	2,519	90.3	674	98.1	23,095	91.0
Foreign	4,732	10.2	2,155	12.2	271	9.7	13	1.9	2,293	9.0
No Data	77	0.2	75	0.4					2	<0.1
ATTENDANCE STATUS:										
Full-Time	25,958	55.8	12,434	70.6	2,115	75.8	327	47.6	11,082	43.6
Part-Time	20,284	43.6	5,170	29.4	675	24.2	360	52.4	14,079	55.5
Zero SSH 3/	229	0.5							229	0.9
No Data	8	<0.1	8	<0.1						

Table 4 (cont.)

CHARACTERISTIC	TOTAL		UH AT MANOA		UH AT HILO		UH WEST O'AHU		COMMUNITY COLLEGES	
	No.	V%	No.	V%	No.	V%	No.	V%	No.	V%
TOTAL SSH TAKEN	466,317		196,074		33,555		6,623		230,065	
Full-Time	353,943		171,044		30,501		4,484		147,914	
Part-Time	112,277		24,933		3,054		2,139		82,151	
No Data	97		97							
AVERAGE SSH TAKEN	10.0		11.1		12.0		9.6		9.1	
Full-Time	13.6		13.8		14.4		13.7		13.3	
Part-Time	5.5		4.8		4.5		5.9		5.8	
No Data	12.1		12.1							
REGISTRATION STATUS:										
Continuing	28,183	60.6	11,935	67.8	1,646	59.0	367	53.4	14,235	56.1
Returning	2,746	5.9	556	3.2	213	7.6	18	2.6	1,959	7.7
First-Time	9,885	21.3	3,281	18.6	428	15.3			6,176	24.3
Transfer	5,664	12.2	1,840	10.4	503	18.0	302	44.0	3,019	11.9
No Data	1	<0.1							1	<0.1
ENTERING STUDENTS: 4/	18,295	39.4	5,677	32.2	1,144	41.0	320	46.6	11,154	43.9
First-Time Students	9,885	21.3	3,281	18.6	428	15.3			6,176	24.3
Full-Time Freshmen	4,761	10.2	1,486	8.4	364	13.0			2,911	11.5
Other Undergraduates	3,565	7.7	236	1.3	64	2.3			3,265	12.9
Graduates	1,559	3.4	1,559	8.9						
Transfers	5,664	12.2	1,840	10.4	503	18.0	302	44.0	3,019	11.9
From Other UH Campuses	3,074	6.6	784	4.5	230	8.2	252	36.7	1,808	7.1
From Non-UH Campuses	2,590	5.6	1,056	6.0	273	9.8	50	7.3	1,211	4.8
Returning	2,746	5.9	556	3.2	213	7.6	18	2.6	1,959	7.7

1/ May include some "Foreign" for the UH Community Colleges.

2/ Western Undergraduate Exchange students, who pay 1.5 times the resident tuition.

3/ Students with zero SSH are students auditing courses for no credit, attending remedial non-credit courses or waiting for courses not currently offered (UH Community Colleges only).

4/ Entering students are defined as those with registration status of first-time, transfer or returning.

TABLE 5
 ETHNIC BACKGROUND OF CREDIT STUDENTS, BY CAMPUS
 UNIVERSITY OF HAWAI'I
 FALL 1999

	TOTAL		UH		UH		UH		UH COMMUNITY COLLEGES															
	No.	V%	No.	V%	No.	V%	No.	V%	Subtotal	Hawai'i	Honolulu	Kapi'olani	Kaua'i	Leeward	Maui	Windward								
	No.	V%	No.	V%	No.	V%	No.	V%	No.	V%	No.	V%	No.	V%	No.	V%	No.	V%						
TOTAL	46,479	100.0	17,612	100.0	2,790	100.0	687	100.0	25,390	100.0	2,279	100.0	4,769	100.0	7,254	100.0	1,142	100.0	5,570	100.0	2,862	100.0	1,514	100.0
ASIAN / PAC ISLANDER .	30,060	64.7	11,416	64.8	1,480	53.0	419	61.0	16,745	66.0	1,408	61.8	3,146	66.0	5,328	73.4	707	61.9	3,639	65.3	1,684	58.8	833	55.0
Japanese	8,602	18.5	4,133	23.5	443	15.9	120	17.5	3,906	15.4	239	10.5	641	13.4	1,603	22.1	114	10.0	843	15.1	267	9.3	199	13.1
Chinese	3,220	6.9	1,836	10.4	49	1.8	19	2.8	1,316	5.2	30	1.3	334	7.0	741	10.2	6	0.5	144	2.6	23	0.8	38	2.5
Korean	1,374	3.0	744	4.2	28	1.0	9	1.3	593	2.3	20	0.9	104	2.2	307	4.2	5	0.4	116	2.1	30	1.0	11	0.7
Filipino	6,467	13.9	1,537	8.7	172	6.2	136	19.8	4,622	18.2	276	12.1	883	18.5	1,122	15.5	303	26.5	1,360	24.4	607	21.2	71	4.7
Hawaiian / Part-Hawn	6,619	14.2	1,558	8.8	557	20.0	94	13.7	4,410	17.4	708	31.1	716	15.0	832	11.5	251	22.0	828	14.9	652	22.8	423	27.9
Pacific Islander	1,106	2.4	377	2.1	142	5.1	9	1.3	578	2.3	71	3.1	171	3.6	153	2.1	7	0.6	97	1.7	34	1.2	45	3.0
Other Asian	922	2.0	453	2.6	15	0.5	7	1.0	447	1.8	10	0.4	134	2.8	220	3.0	3	0.3	56	1.0	14	0.5	10	0.7
Mixed Asian / Pac Island	1,750	3.8	778	4.4	74	2.7	25	3.6	873	3.4	54	2.4	163	3.4	350	4.8	18	1.6	195	3.5	57	2.0	36	2.4
HISPANIC	926	2.0	255	1.4	48	1.7	14	2.0	609	2.4	35	1.5	169	3.5	122	1.7	24	2.1	159	2.9	60	2.1	40	2.6
Puerto Rican	222	0.5	49	0.3	10	0.4	3	0.4	160	0.6	10	0.4	43	0.9	36	0.5	8	0.7	44	0.8	11	0.4	8	0.5
Other Hispanic	370	0.8	107	0.6	10	0.4	1	0.1	252	1.0	12	0.5	73	1.5	39	0.5	12	1.1	71	1.3	27	0.9	18	1.2
Mixed Hispanic	334	0.7	99	0.6	28	1.0	10	1.5	197	0.8	13	0.6	53	1.1	47	0.6	4	0.4	44	0.8	22	0.8	14	0.9
CAUCASIAN	9,194	19.8	3,820	21.7	850	30.5	151	22.0	4,373	17.2	408	17.9	813	17.0	911	12.6	286	25.0	670	12.0	877	30.6	408	26.9
Portuguese.....	490	1.1	105	0.6	45	1.6	11	1.6	329	1.3	67	2.9	44	0.9	43	0.6	28	2.5	47	0.8	67	2.3	33	2.2
Other Caucasian	8,704	18.7	3,715	21.1	805	28.9	140	20.4	4,044	15.9	341	15.0	769	16.1	868	12.0	258	22.6	623	11.2	810	28.3	375	24.8
AFRICAN AMERICAN	580	1.2	151	0.9	25	0.9	14	2.0	390	1.5	13	0.6	185	3.9	64	0.9	2	0.2	108	1.9	9	0.3	9	0.6
AM INDIAN / ALASKAN ...	147	0.3	40	0.2	17	0.6	3	0.4	87	0.3	16	0.7	25	0.5	15	0.2	2	0.2	15	0.3	11	0.4	3	0.2
MIXED ETHNIC BKGRD .	5,053	10.9	1,616	9.2	370	13.3	86	12.5	2,981	11.7	227	10.0	399	8.4	814	11.2	121	10.6	978	17.6	221	7.7	221	14.6
NO RESPONSE	519	1.1	314	1.8					205	0.8	172	7.5	32	0.7					1	<0.1				

TABLE 6
 PERCENTAGE CHANGE IN SELECTED CHARACTERISTICS OF CREDIT STUDENTS, BY UNIT
 UNIVERSITY OF HAWAI'I
 FALL 1995 TO FALL 1999

CHARACTERISTIC	TOTAL			UH AT MANOA			UH AT HILO			UH-WEST O'AHU			COMMUNITY COLLEGES		
	1995	1999	% Chg	1995	1999	% Chg	1995	1999	% Chg	1995	1999	% Chg	1995	1999	% Chg
TOTAL	50,242	46,479	-7	19,801	17,612	-11	2,872	2,790	-3	716	687	-4	26,853	25,390	-5
EDUCATIONAL LEVEL:															
Undergraduate	43,631	40,548	-7	13,381	11,931	-11	2,693	2,542	-6	704	685	-3	26,853	25,390	-5
Classified	40,627	37,634	-7	13,050	11,458	-12	2,488	2,368	-5	607	613	1	24,482	23,195	-5
Lower Division	30,265	28,218	-7	4,671	3,944	-16	1,112	1,079	-3				24,482	23,195	-5
Freshmen	18,546	16,698	-10	2,295	1,925	-16	563	567	1				15,688	14,206	-9
Sophomores	11,719	11,520	-2	2,376	2,019	-15	549	512	-7				8,794	8,989	2
Upper Division	10,362	9,416	-9	8,379	7,514	-10	1,376	1,289	-6	607	613	1			
Juniors	4,172	3,713	-11	3,227	2,761	-14	601	576	-4	344	376	9			
Seniors	6,190	5,703	-8	5,152	4,753	-8	775	713	-8	263	237	-10			
Unclassified	2,981	2,887	-3	331	473	43	205	174	-15	97	72	-26	2,348	2,168	-8
No Data	23	27											23	27	
Graduate	6,580	5,923	-10	6,389	5,673	-11	179	248	39	12	2	-83			
Classified	5,303	4,807	-9	5,220	4,741	-9	83	66	-20						
Unclassified	1,277	1,116	-13	1,169	932	-20	96	182	90	12	2	-83			
No Data	31	8		31	8										
GENDER:															
Men	21,832	20,418	-6	8,990	7,783	-13	1,123	1,120	0	265	209	-21	11,454	11,306	-1
Women	28,405	26,061	-8	10,809	9,829	-9	1,749	1,670	-5	451	478	6	15,396	14,084	-9
No Data	5			2									3		
PERMANENT HOME ADDRESS:															
Hawai'i	46,271	42,157	-9	16,807	14,658	-13	2,384	2,234	-6	715	685	-4	26,365	24,580	-7
Other U.S.	2,352	2,738	16	1,675	1,766	5	383	462	21	1			293	510	74
Foreign	1,372	1,166	-15	1,264	1,055	-17	104	90	-13				4	21	
No Data 1/	247	418		55	133		1	4			2		191	279	
TUITION STATUS:															
Resident Subtotal	43,579	39,558	-9	15,934	13,809	-13	2,361	2,161	-8	650	624	-4	24,634	22,964	-7
Resident	42,223	38,802	-8	14,967	13,277	-11	2,257	2,116	-6	640	616	-4	24,359	22,793	-6
Resident Converted	1,356	756	-44	967	532	-45	104	45	-57	10	8	-20	275	171	-38
Non-Resident Subtotal	6,660	6,920	4	3,867	3,803	-2	511	629	23	66	62	-6	2,216	2,426	9
Not Exempted	2,468	2,713	10	1,415	1,760	24	297	250	-16	14	3	-79	742	700	-6
Western Undergrad Exchange 2/		266			109			157							
Exempted	4,192	3,941	-6	2,452	1,934	-21	214	222	4	52	59	13	1,474	1,726	17
Military	1,387	1,736	25	410	364	-11	6	6	0	48	55	15	923	1,311	42
Faculty / Staff	635	238	-63	600	196	-67	1	3	200				34	39	15
Institutional	928	675	-27	369	259	-30	136	137	1	3	3	0	420	276	-34
Student Exchange	167	321	92	148	272	84	19	45	137					4	
Pacific-Asian	682	671	-2	647	659	2	35	9	-74					3	
East-West Center	220	122	-45	217	118	-46	3	3	0					1	
Ethnic Hawaiian	173	178	3	61	66	8	14	19	36	1	1		97	92	-5
No Data	3	1									1		3		

Table 6 (cont.)

CHARACTERISTIC	TOTAL			UH AT MANOA			UH AT HILO			UH-WEST O'AHU			COMMUNITY COLLEGES		
	1995	1999	% Chg	1995	1999	% Chg	1995	1999	% Chg	1995	1999	% Chg	1995	1999	% Chg
AGE:															
Mean Age	26.4	26.2	-1	25.9	26.1	1	26.7	26.4	-1	32.6	31.9	-2	26.6	26.1	-2
Under 18	1,303	1,267	-3	383	306	-20	98	103	5		2		822	856	4
18-19	9,770	9,710	-1	3,283	2,922	-11	597	619	4		1		5,890	6,168	5
20-21	8,685	8,259	-5	3,576	3,258	-9	488	527	8	32	34	6	4,589	4,440	-3
22-24	9,663	8,478	-12	4,534	3,935	-13	544	494	-9	137	160	17	4,448	3,889	-13
25-29	7,852	7,200	-8	3,501	3,056	-13	351	343	-2	177	165	-7	3,823	3,636	-5
30-34	4,430	3,885	-12	1,694	1,533	-10	198	158	-20	117	98	-16	2,421	2,096	-13
35-59	8,026	7,390	-8	2,726	2,530	-7	562	532	-5	244	220	-10	4,494	4,108	-9
60 and over	509	285	-44	104	70	-33	34	14	-59	8	7	-13	363	194	-47
No Data	4	5			2					1			3	3	
CITIZENSHIP:															
United States	44,412	41,670	-6	17,176	15,382	-10	2,571	2,519	-2	695	674	-3	23,970	23,095	-4
Foreign	5,671	4,732	-17	2,470	2,155	-13	301	271	-10	21	13	-38	2,879	2,293	-20
No Data	159	77		155	75								4	2	
ATTENDANCE STATUS:															
Full-Time	27,400	25,958	-5	14,173	12,434	-12	2,106	2,115	0	275	327	19	10,846	11,082	2
Part-Time	22,683	20,284	-11	5,597	5,170	-8	766	675	-12	441	360	-18	15,879	14,079	-11
Zero SSH 3/	128	229	79										128	229	79
No Data	31	8		31	8										
TOTAL SSH TAKEN															
Full-Time	503,389	466,317	-7	221,616	196,074	-12	34,054	33,555	-1	6,417	6,623	3	241,302	230,065	-5
Part-Time	373,033	353,943	-5	193,553	171,044	-12	30,101	30,501	1	3,759	4,484	19	145,620	147,914	2
No Data	129,991	112,277	-14	27,698	24,933	-10	3,953	3,054	-23	2,658	2,139	-20	95,682	82,151	-14
No Data	365	97		365	97										
AVERAGE SSH TAKEN															
Full-Time	10.0	10.0	0	11.2	11.1	-1	11.9	12.0	1	9.0	9.6	7	9.0	9.1	1
Part-Time	13.6	13.6	0	13.7	13.8	1	14.3	14.4	1	13.7	13.7	0	13.4	13.3	-1
No Data	5.7	5.5	-4	4.9	4.8	-2	5.2	4.5	-13	6.0	5.9	-2	6.0	5.8	-3
No Data	11.8	12.1		11.8	12.1										
REGISTRATION STATUS:															
Continuing	31,870	28,183	-12	14,027	11,935	-15	1,811	1,646	-9	416	367	-12	15,616	14,235	-9
Returning	2,926	2,746	-6	647	556	-14	138	213	54	63	18	-71	2,078	1,959	-6
First-Time	10,158	9,885	-3	3,556	3,281	-8	385	428	11				6,217	6,176	-1
Transfer	5,288	5,664	7	1,571	1,840	17	538	503	-7	237	302	27	2,942	3,019	3
No Data		1												1	
HIGH SCHOOL BACKGROUND 4/:															
Hawai'i	8,362	8,080	-3	1,778	1,529	-14	367	375	2				6,217	6,176	-1
Public	6,354	6,136	-3	1,648	1,340	-19	290	251	-13				4,416	4,545	3
Private	5,350	5,141	-4	1,154	893	-23	240	208	-13				3,956	4,040	2
Other than Hawai'i	1,004	995	-1	494	447	-10	50	43	-14				460	505	10
US Mainland	1,249	1,199	-4	129	186	44	70	120	71				1,050	893	-15
US Possessions	792	785	-1	86	136	58	55	86	56				651	563	-14
Foreign	50	56	12	15	15	0	3	2	-33				32	39	22
No Data	407	358	-12	28	35	25	12	32	167				367	291	-21

Table 6 (cont.)

CHARACTERISTIC	TOTAL			UH AT MANOA			UH AT HILO			UH-WEST O'AHU			COMMUNITY COLLEGES		
	1995	1999	% Chg	1995	1999	% Chg	1995	1999	% Chg	1995	1999	% Chg	1995	1999	% Chg
Other Special	485	456	-6	1	3	200	6	3	-50				478	450	-6
GED	303	322	6	1	3	200	6	3	-50				296	316	7
Not High School Grad	182	134	-26										182	134	-26
No Data	274	289					1	1					273	288	
ENTERING STUDENTS:	18,372	18,295	0	5,774	5,677	-2	1,061	1,144	8	300	320	7	11,237	11,154	-1
First-Time Students	10,158	9,885	-3	3,556	3,281	-8	385	428	11				6,217	6,176	-1
Full-Time Freshmen	4,882	4,761	-2	1,730	1,486	-14	355	364	3				2,797	2,911	4
Other Undergraduates	3,673	3,565	-3	223	236	6	30	64	113				3,420	3,265	-5
Graduates	1,603	1,559	-3	1,603	1,559	-3									
Transfers	5,288	5,664	7	1,571	1,840	17	538	503	-7	237	302	27	2,942	3,019	3
From Other UH Campuses	3,054	3,074	1	868	784	-10	305	230	-25	199	252	27	1,682	1,808	7
From Non-UH Campuses	2,234	2,590	16	703	1,056	50	233	273	17	38	50	32	1,260	1,211	-4
Returning	2,926	2,746	-6	647	556	-14	138	213	54	63	18	-71	2,078	1,959	-6
ETHNICITY:															
Asian / Pacific Islander	32,730	30,060	-8	13,005	11,416	-12	1,517	1,480	-2	412	419	2	17,796	16,745	-6
Japanese	9,825	8,602	-12	4,921	4,133	-16	468	443	-5	151	120	-21	4,285	3,906	-9
Chinese	3,947	3,220	-18	2,402	1,836	-24	67	49	-27	25	19	-24	1,453	1,316	-9
Korean	1,381	1,374	-1	718	744	4	23	28	22	7	9	29	633	593	-6
Filipino	7,507	6,467	-14	1,901	1,537	-19	205	172	-16	106	136	28	5,295	4,622	-13
Hawn / Part-Hawn	6,386	6,619	4	1,562	1,558	0	542	557	3	81	94	16	4,201	4,410	5
Pacific Islander	1,057	1,106	5	272	377	39	137	142	4	12	9	-25	636	578	-9
Other Asian	1,144	922	-19	499	453	-9	12	15	25	9	7	-22	624	447	-28
Mixed Asian / Pac Islander	1,483	1,750	18	730	778	7	63	74	17	21	25	19	669	873	30
Hispanic	900	926	3	223	255	14	55	48	-13	9	14	56	613	609	-1
Puerto Rican	237	222	-6	53	49	-8	14	10	-29	2	3	50	168	160	-5
Other Hispanic	378	370	-2	80	107	34	27	10	-63	5	1	-80	266	252	-5
Mixed Hispanic	285	334	17	90	99	10	14	28	100	2	10	400	179	197	10
Caucasian	10,309	9,194	-11	4,243	3,820	-10	896	850	-5	198	151	-24	4,972	4,373	-12
Portuguese	594	490	-18	132	105	-20	55	45	-18	16	11	-31	391	329	-16
Other Caucasian	9,715	8,704	-10	4,111	3,715	-10	841	805	-4	182	140	-23	4,581	4,044	-12
African American	487	580	19	132	151	14	23	25	9	11	14	27	321	390	21
Amer Indian / Alaskan Native	174	147	-16	58	40	-31	19	17	-11		3		97	87	-10
Mixed Ethnic Background	4,879	5,053	4	1,547	1,616	4	362	370	2	86	86	0	2,884	2,981	3
No Response	763	519	-32	593	314	-47							170	205	21

1/ May include some "Foreign" for the UH Community Colleges.

2/ Western Undergraduate Exchange students, who pay 1.5 times the resident tuition. Category added Fall 1997.

3/ Students with zero SSH are students auditing courses for no credit, attending remedial non-credit courses or waiting for courses not currently offered (UH Community Colleges only).

4/ Includes first-time freshmen only at UH-Manoa and UH-Hilo; includes all first-time students at the UH Community Colleges.

Note: Percentage change not computed for "No Data" categories, or where one figure is blank.