

SUMMER ENROLLMENT REPORT

UNIVERSITY OF HAWAI'I

SUMMER 2003

Institutional Research Office
University of Hawai'i
September 2004

File Reference: Management and Planning Support Folder, Enrollment

Reports available online at: <http://www.hawaii.edu/iro/maps.htm>

THE UNIVERSITY OF HAWAII HEADCOUNT ENROLLMENT, SUMMER 2003

Headcount enrollment at the University of Hawai'i measured 20,686 in Summer 2003, an increase of 2.2% over the previous summer session (Tables 1 & 2 and Figure 1). Headcount enrollment at UH Mānoa measured 12,052, a slight decrease from the previous summer (note that for UH Mānoa the total enrollment is the sum of Summer Sessions I and II and excludes the unduplicated headcount). Enrollment at UH-West O'ahu increased 6.2% to 293, while enrollment at the UH Community Colleges increased 7.6% to 7,391. Enrollment at UH Hilo measured 950, down 3.3% from the previous summer.

Full-Time Equivalent (FTE) enrollment for the UH system increased 2.6%, to 6,049 (Table 3 and Figure 1). UH Mānoa posted a slight increase, to 3,496, while FTE enrollment at UH-West O'ahu increased 6.4% to 83, and at the UH Community Colleges increased 6.5% to 2,175. FTE enrollment at UH Hilo declined 6.1% to 295.

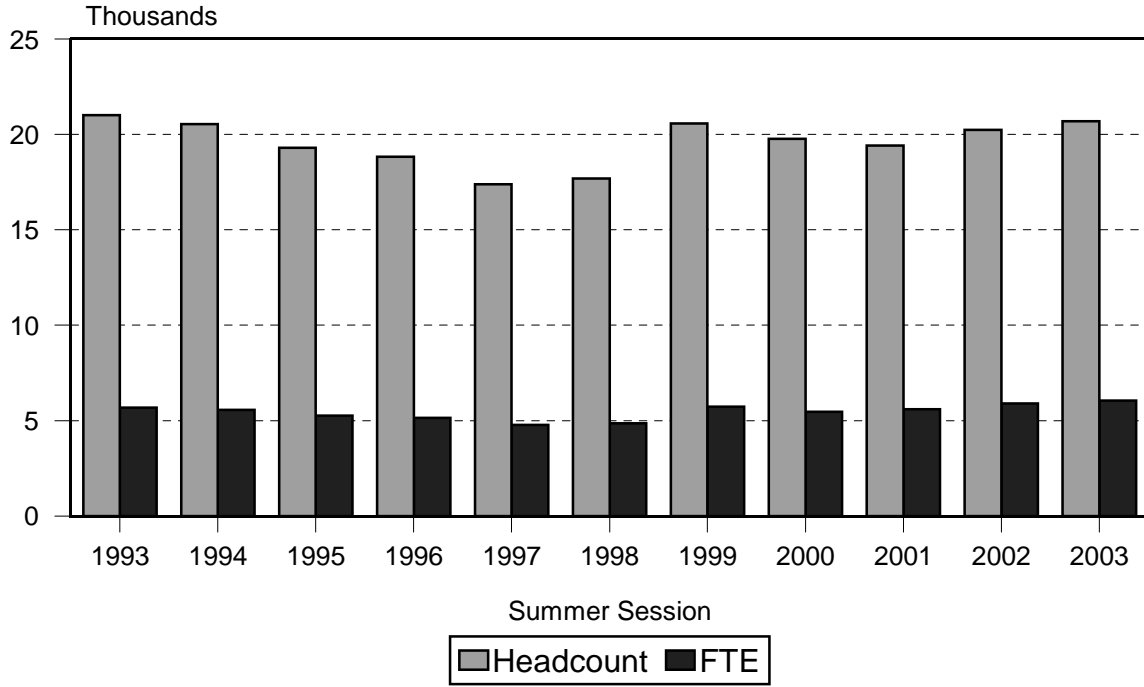
In Summer 2002, the University of Hawai'i Community Colleges migrated to a new student registration system. UH-West O'ahu migrated to this system in Summer 2003. Subsequently, there was a large increase in the number of enrollment records with unusable data for certain fields, including: citizenship, education level, and permanent home address. The reader is advised to exercise caution when examining trends or using percentage data. Efforts to improve data quality are on-going.

Other Summer 2003 enrollment highlights:

- The FTE enrollment / headcount ratio reached .292 for Summer 2003, the highest ratio in many years (Figure 2). This measure indicates a higher average credit hour load per student.
- The enrollment gap between men and women continues to widen (Figure 4). Women account for 62% of the total enrollment system-wide (Table 4).
- Students enrolling through the Western Undergraduate Exchange program have grown from 12 in Summer 1997 (the first year on record) to 434 in Summer 2003, an average annual growth rate of over 80%.
- With the addition of continuing education credit students to the enrollment counts at UH Mānoa, Hilo and Honolulu CC in Summer 1999, mean age jumped to 27.1 years (Figure 5). Since then, mean age has continued an overall downward trend, and measured 26.3 years in Summer 2003.
- The ethnic make-up of the student body continues to diversify. Since Summer 1993, ethnic Filipino, Hawaiian, Pacific Islanders and students of mixed ethnicity have increased as a percentage of total enrollment, while Japanese and Chinese have decreased (Figure 6). Ethnic Caucasians have also increased slightly, most likely as a result of enrollment increases in students from the U.S. mainland via the WUE program and in response to university-wide recruiting efforts.

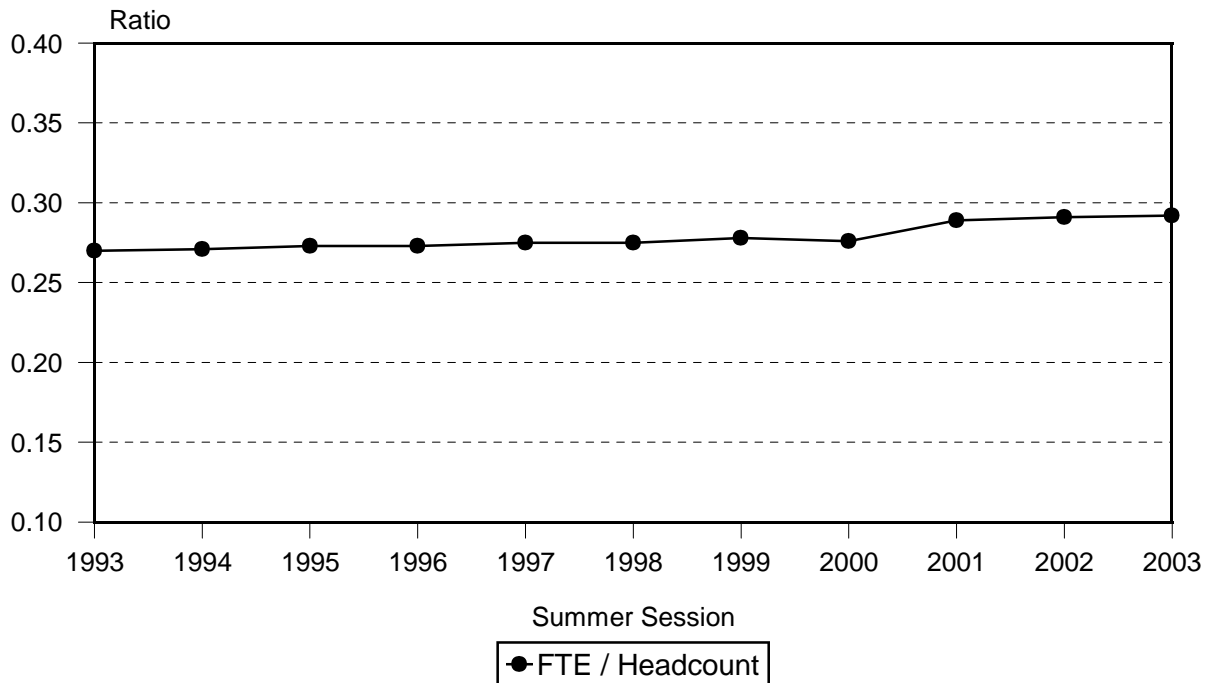
University of Hawai'i
Credit Students

Figure 1
Headcount and FTE Enrollment



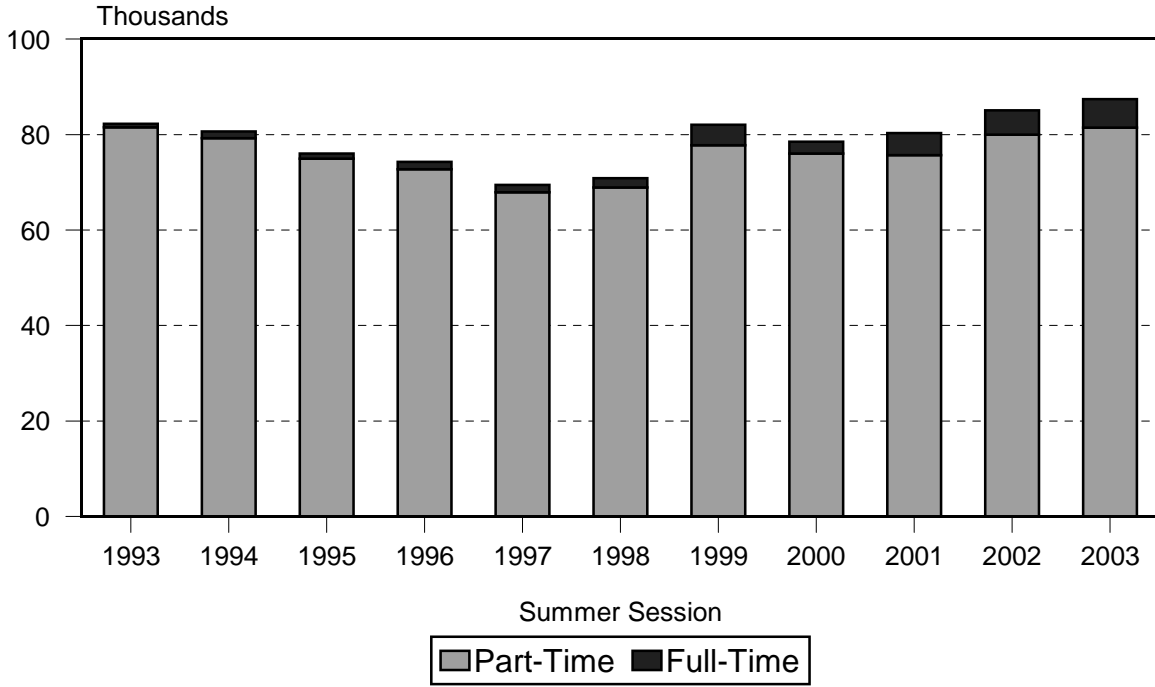
Note: Extension term was added to the UH Manoa enrollment count in Summer 1999.

Figure 2
FTE / Headcount Ratio



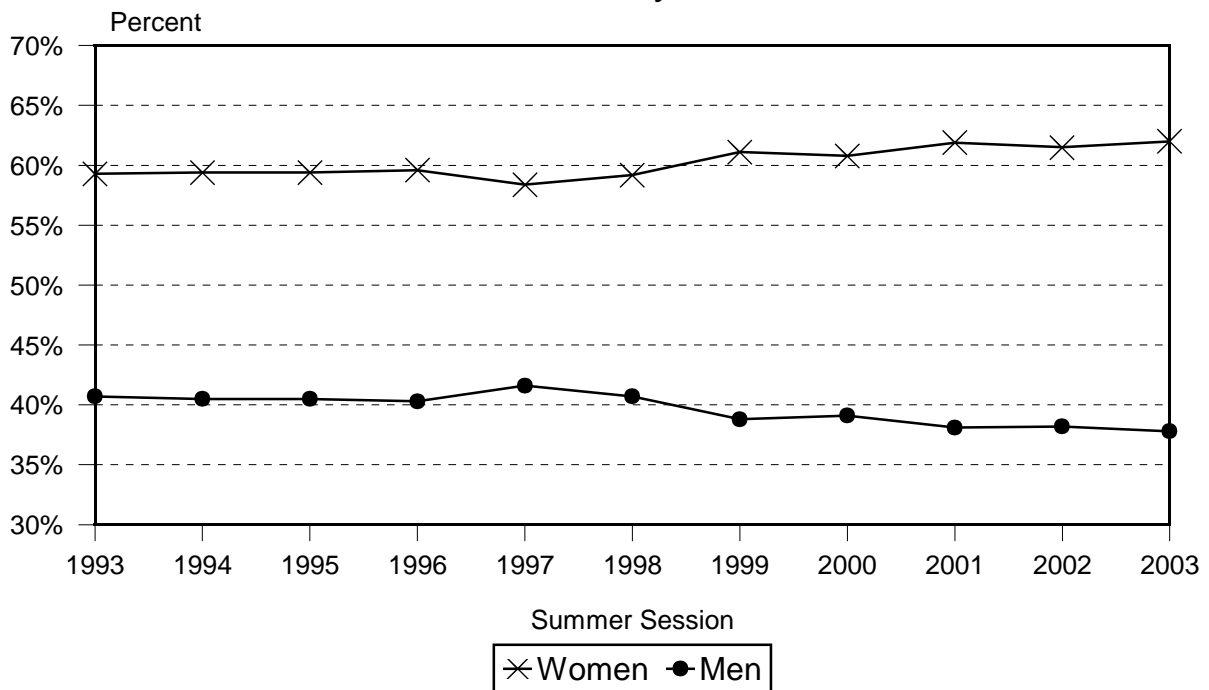
University of Hawai'i
Credit Students

Figure 3
Student Semester Hours Taken



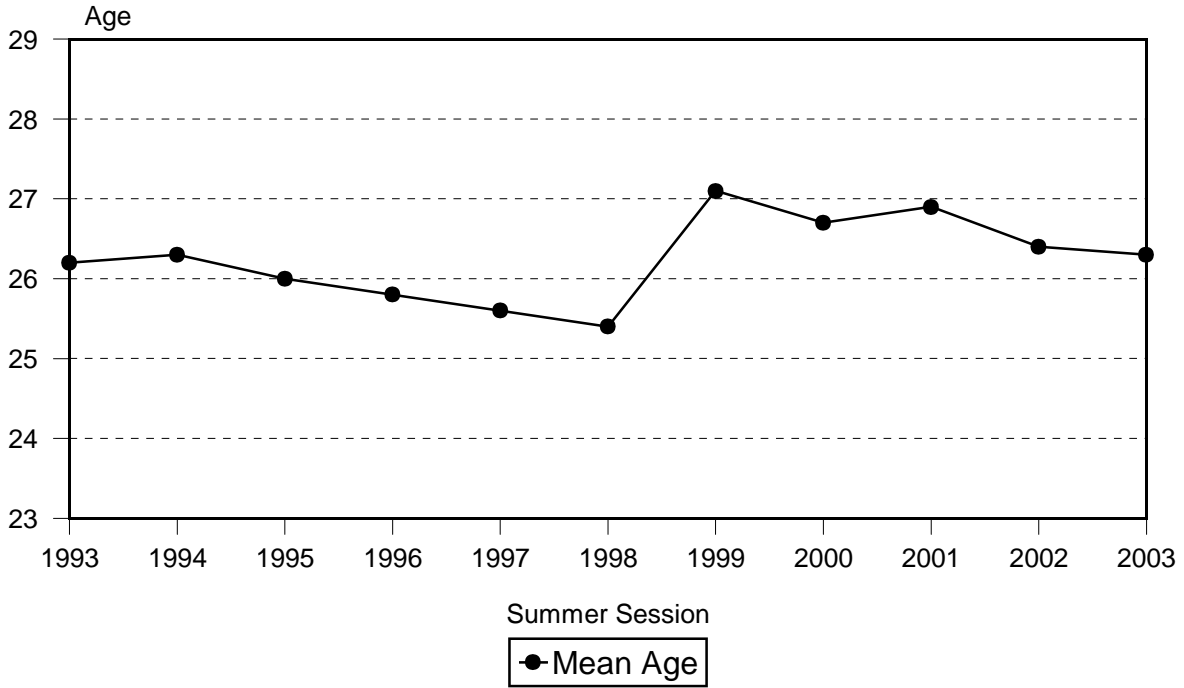
Note: Extension term was added to the UH Manoa enrollment count in Summer 1999.

Figure 4
Enrollment by Gender



University of Hawai'i
Credit Students

Figure 5
Mean Age



Note: Extension term was added to the UH Manoa enrollment count in Summer 1999.

Figure 6
Enrollment by Ethnicity

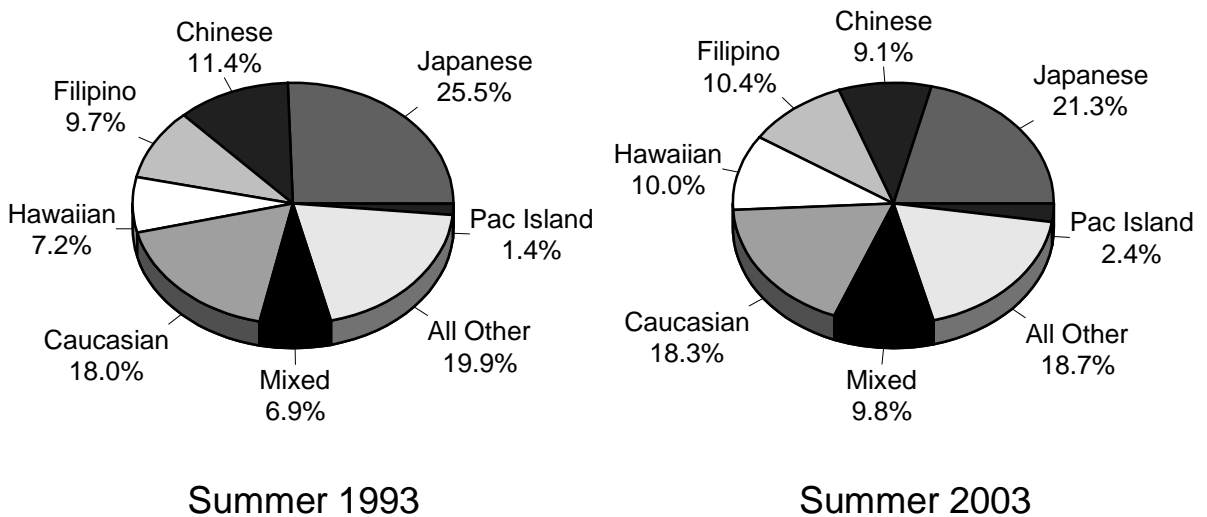


TABLE 1
HEADCOUNT ENROLLMENT OF CREDIT STUDENTS
UNIVERSITY OF HAWAI'I
SUMMER 2003

CAMPUS	TOTAL	Regular Students	Special Students			
			Subtotal Special	Auditor	Early Admit	Adult Special
TOTAL	20,686	20,314	372	1	354	17
UH AT MANOA 1/	12,052	11,928	124	1	123	
(Duplicated Count)						
UH AT HILO	950	931	19		2	17
UH - WEST O'AHU	293	293				
COMMUNITY COLLEGES ...	7,391	7,162	229		229	
Hawai'i	185	181	4		4	
Honolulu	1,213	1,121	92		92	
Kapi'olani	2,883	2,831	52		52	
Kaua'i	169	153	16		16	
Leeward	1,894	1,873	21		21	
Maui	736	717	19		19	
Windward	311	286	25		25	

1/ Includes Summer Session I and Summer Session II. Students who enrolled in more than one summer session are counted twice. The unduplicated count was 9,497.

TABLE 2
HEADCOUNT ENROLLMENT OF CREDIT STUDENTS
UNIVERSITY OF HAWAI'I
SUMMER 1993 TO SUMMER 2003

SUMMER SESSION	TOTAL 1/		UH AT MANOA						UH AT HILO		UH - WEST O'AHU		UH COMMUNITY COLLEGES			
	No.	% Chge	Summer I No.	% Chge	Summer II No.	% Chge	Extension No.	% Chge	Unduplicated No.	% Chge	No.	% Chge	No.	% Chge	No.	% Chge
1993	21,004	-3.8	7,011	-2.3	7,683	-4.1			10,927	-3.6	1,087	-3.5	245	-14.3	4,978	-4.9
1994	20,532	-2.2	7,012	0.0	7,262	-5.5			10,607	-2.9	1,064	-2.1	236	-3.7	4,958	-0.4
1995	19,305	-6.0	6,594	-6.0	7,026	-3.2			10,209	-3.8	1,075	1.0	246	4.2	4,364	-12.0
1996	18,822	-2.5	6,040	-8.4	6,953	-1.0			9,750	-4.5	1,020	-5.1	176	-28.5	4,633	6.2
1997	17,381	-7.7	5,557	-8.0	6,095	-12.3			8,784	-9.9	902	-11.6	127	-27.8	4,700	1.4
1998	17,692	1.8	5,534	-0.4	5,596	-8.2			8,343	-5.0	852	-5.5	185	45.7	5,525	17.6
1999 2/	20,566	NA	5,075	-8.3	5,651	1.0	2,340		10,188	22.1	929	9.0	176	-4.9	6,395	NA
2000	19,775	-3.8	4,986	-1.8	5,080	-10.1	2,357	0.7	10,214	0.3	850	-8.5	201	14.2	6,301	-1.5
2001	19,415	-1.8	4,595	-7.8	5,020	-1.2	2,384	1.1	9,445	-7.5	1,010	18.8	212	5.5	6,194	-1.7
2002 3/	20,243	4.3	4,858	5.7	7,258	NA			9,598	1.6	982	-2.8	276	30.2	6,869	10.9
2003	20,686	2.2	4,984	2.6	7,068	-2.6			9,497	-1.1	950	-3.3	293	6.2	7,391	7.6

1/ Total excludes unduplicated headcount at UH Manoa.

2/ Beginning Summer 1999, the total for the UH system includes students enrolled in the Extension term (continuing education credit) at UH Manoa, while the total for the UHCC system includes students enrolled in SOCAD (continuing education credit) at Honolulu CC.

The percentage change figures therefore are not comparable to those for prior years and are not shown.

3/ Extension term no longer available separately, beginning Summer 2002; included with Summer Session II.

Note: Data include special students (concurrents, early admits and auditors) for all years shown.

TABLE 2A
HEADCOUNT ENROLLMENT OF CREDIT STUDENTS
UNIVERSITY OF HAWAI'I, COMMUNITY COLLEGES
SUMMER 1993 TO SUMMER 2003

SUMMER SESSION	TOTAL		Hawai'i		Honolulu 1/		Kapi'olani		Kaua'i		Leeward		Maui		Windward	
	No.	% Chge	No.	% Chge	No.	% Chge	No.	% Chge	No.	% Chge	No.	% Chge	No.	% Chge	No.	% Chge
1993	4,978	-4.9	170	-23.8	893	-3.4	1,756	-2.3	148	-27.1	1,319	3.2	513	-15.5	179	-10.5
1994	4,958	-0.4	190	11.8	934	4.6	1,796	2.3	136	-8.1	1,271	-3.6	452	-11.9	179	0.0
1995	4,364	-12.0	128	-32.6	843	-9.7	1,619	-9.9	157	15.4	1,105	-13.1	396	-12.4	116	-35.2
1996	4,633	6.2	49	-61.7	910	7.9	1,749	8.0	151	-3.8	1,232	11.5	474	19.7	68	-41.4
1997	4,700	1.4	139	183.7	899	-1.2	1,666	-4.7	175	15.9	1,105	-10.3	508	7.2	208	205.9
1998	5,525	17.6	121	-12.9	843	-6.2	2,166	30.0	161	-8.0	1,192	7.9	740	45.7	302	45.2
1999 2/	6,395	NA	169	39.7	1,461	NA	2,348	8.4	145	-9.9	1,285	7.8	712	-3.8	275	-8.9
2000	6,301	-1.5	122	-27.8	1,470	0.6	2,291	-2.4	95	-34.5	1,422	10.7	677	-4.9	224	-18.5
2001	6,194	-1.7	116	-4.9	1,343	-8.6	2,313	1.0	108	13.7	1,485	4.4	576	-14.9	253	12.9
2002	6,869	10.9	162	39.7	1,092	-18.7	2,659	15.0	136	25.9	1,830	23.2	658	14.2	332	31.2
2003	7,391	7.6	185	14.2	1,213	11.1	2,883	8.4	169	24.3	1,894	3.5	736	11.9	311	-6.3

1/ Includes continuing education credit students (SOCAD) at Honolulu CC, beginning Summer 1999.

2/ The inclusion of continuing education credit students at Honolulu CC makes the percentage change for Summer 1999 incomparable to prior years for Honolulu CC and the UH Community College system. These percentage change figures are therefore not shown.

Note: Data have been updated to include special students (concurrents, early admits and auditors) for all years shown.

TABLE 3
FULL-TIME EQUIVALENT (FTE) STUDENT ENROLLMENT OF CREDIT STUDENTS
UNIVERSITY OF HAWAI'I
SUMMER 1993 TO SUMMER 2003

SUMMER SESSION	TOTAL		UH AT MANOA						UH AT HILO		UH - WEST O'AHU		UH COMMUNITY COLLEGES	
	No.	% Chge	Summer I No.	% Chge	Summer II No.	% Chge	Extension No.	% Chge	No.	% Chge	No.	% Chge	No.	% Chge
1993	5,682	-4.2	1,913	-0.9	2,079	-6.5			309	-3.7	64	-15.8	1,317	-4.8
1994	5,569	-2.0	1,912	-0.1	1,970	-5.2			312	1.0	62	-3.1	1,313	-0.3
1995	5,267	-5.4	1,766	-7.6	1,944	-1.3			318	1.9	63	1.6	1,176	-10.4
1996	5,139	-2.4	1,642	-7.0	1,928	-0.8			305	-4.1	47	-25.4	1,217	3.5
1997	4,774	-7.1	1,500	-8.6	1,641	-14.9			270	-11.5	32	-31.9	1,331	9.4
1998	4,859	1.8	1,525	1.7	1,481	-9.8			254	-5.9	47	46.9	1,552	16.6
1999 1/	5,724	NA	1,361	-10.8	1,542	4.1	709		283	11.4	45	-4.3	1,784	NA
2000	5,455	-4.7	1,347	-1.0	1,333	-13.6	698	-1.6	246	-13.1	51	13.3	1,780	-0.2
2001	5,604	2.7	1,264	-6.2	1,336	0.2	787	12.8	321	30.5	54	5.9	1,842	3.5
2002 2/	5,897	5.2	1,318	4.3	2,145	NA			314	-2.2	78	44.4	2,042	10.9
2003	6,049	2.6	1,340	1.7	2,156	0.5			295	-6.1	83	6.4	2,175	6.5

1/ Beginning Summer 1999, the total for the UH system includes students enrolled in the Extension term (continuing education credit) at UH Manoa, while the total for the UHCC system includes students enrolled in SOCAD (continuing education credit) at Honolulu CC. The percentage change figures therefore are not comparable to those for prior years and are not shown.

2/ Extension term no longer available separately, beginning Summer 2002; included with Summer Session II.

Note: Data have been updated to include special students (concurrents, early admits and auditors) for all years shown.

TABLE 3A
FTE STUDENT ENROLLMENT OF CREDIT STUDENTS
UNIVERSITY OF HAWAII, COMMUNITY COLLEGES
SUMMER 1993 TO SUMMER 2003

SUMMER SESSION	TOTAL		Hawai'i		Honolulu 1/		Kapi'olani		Kaua'i		Leeward		Maui		Windward	
	No.	% Chg	No.	% Chg	No.	% Chg	No.	% Chg	No.	% Chg	No.	% Chg	No.	% Chg	No.	% Chg
1993	1,317	-4.8	44	-21.4	262	-3.3	467	-3.3	32	-36.0	339	6.9	130	-17.7	43	-10.4
1994	1,313	-0.3	58	31.8	258	-1.5	483	3.4	36	12.5	323	-4.7	113	-13.1	42	-2.3
1995	1,176	-10.4	35	-39.7	238	-7.8	437	-9.5	39	8.3	301	-6.8	99	-12.4	27	-35.7
1996	1,217	3.5	14	-60.0	246	3.4	476	8.9	40	2.6	310	3.0	115	16.2	16	-40.7
1997	1,331	9.4	41	192.9	254	3.3	510	7.1	48	20.0	293	-5.5	130	13.0	55	243.8
1998	1,552	16.6	39	-4.9	242	-4.7	661	29.6	39	-18.8	306	4.4	175	34.6	90	63.6
1999 2/.....	1,784	NA	44	12.8	414	NA	724	9.5	35	-10.3	324	5.9	167	-4.6	76	-15.6
2000	1,780	-0.2	44	0.0	401	-3.1	696	-3.9	23	-34.3	403	24.4	155	-7.2	58	-23.7
2001	1,842	3.5	36	-18.2	384	-4.2	756	8.6	23	0.0	428	6.2	151	-2.6	64	10.3
2002	2,042	10.9	46	27.8	291	-24.2	881	16.5	31	34.8	535	25.0	170	12.6	88	37.5
2003	2,175	6.5	43	-6.5	334	14.8	919	4.3	41	32.3	548	2.4	196	15.3	94	6.8

1/ Includes continuing education credit students (SOCAD) at Honolulu CC, effective Summer 1999.

2/ The inclusion of continuing education credit students at Honolulu CC makes the percentage change for Summer 1999 incomparable to prior years for Honolulu CC and the UH Community College system. These percentage change figures are therefore not shown.

Note: Data have been updated to include special students (concurrents, early admits and auditors) for all years shown.

TABLE 4
SELECTED CHARACTERISTICS OF CREDIT STUDENTS
UNIVERSITY OF HAWAII
SUMMER 1999 TO SUMMER 2003

CHARACTERISTIC	SUMMER SESSION									
	1999		2000		2001		2002		2003	
	No.	V%	No.	V%	No.	V%	No.	V%	No.	V%
TOTAL	20,566	100.0	19,775	100.0	19,415	100.0	20,243	100.0	20,686	100.0
EDUCATIONAL LEVEL:										
Undergraduate	16,112	78.3	15,703	79.4	15,268	78.6	16,437	81.2	17,084	82.6
Classified	12,954	63.0	12,566	63.5	11,788	60.7	12,358	61.0	11,552	55.8
Freshmen	3,392	16.5	3,427	17.3	3,011	15.5	3,076	15.2	3,005	14.5
Sophomores	3,139	15.3	3,212	16.2	3,034	15.6	3,454	17.1	2,848	13.8
Juniors	1,715	8.3	1,600	8.1	1,533	7.9	1,762	8.7	1,639	7.9
Seniors	4,708	22.9	4,327	21.9	4,210	21.7	4,066	20.1	4,060	19.6
Unclassified	3,138	15.3	3,136	15.9	3,475	17.9	3,957	19.5	3,937	19.0
No Data 1/	20	0.1	1	<0.1	5	<0.1	122	0.6	1,595	7.7
Graduate	4,445	21.6	4,065	20.6	4,125	21.2	3,701	18.3	3,503	16.9
Classified	1,880	9.1	1,813	9.2	1,792	9.2	1,887	9.3	1,898	9.2
Unclassified	2,565	12.5	2,252	11.4	2,333	12.0	1,814	9.0	1,605	7.8
No Data 1/	9	<0.1	7	<0.1	22	0.1	105	0.5	99	0.5
GENDER:										
Men	7,988	38.8	7,741	39.1	7,401	38.1	7,724	38.2	7,814	37.8
Women	12,571	61.1	12,033	60.8	12,010	61.9	12,457	61.5	12,815	62.0
No Data	7	<0.1	1	<0.1	4	<0.1	62	0.3	57	0.3
PERMANENT HOME ADDRESS										
Hawai'i	17,814	86.6	16,969	85.8	16,556	85.3	15,270	75.4	14,813	71.6
Other than Hawai'i	2,499	12.2	2,645	13.4	2,734	14.1	2,152	10.6	2,370	11.5
No Data 2/	253	1.2	161	0.8	125	0.6	2,821	13.9	3,503	16.9
TUITION STATUS:										
Resident Subtotal	16,165	78.6	15,380	77.8	14,921	76.9	15,320	75.7	15,316	74.0
Resident	15,820	76.9	15,099	76.4	14,682	75.6	15,048	74.3	15,010	72.6
Resident Converted	345	1.7	281	1.4	239	1.2	272	1.3	306	1.5
Non Resident Subtotal	4,399	21.4	4,395	22.2	4,494	23.1	4,266	21.1	4,663	22.5
Not Exempted	2,511	12.2	2,572	13.0	2,634	13.6	2,377	11.7	2,446	11.8
Western Undergrad Exch	44	0.2	186	0.9	254	1.3	334	1.6	434	2.1
Exempted	1,844	9.0	1,637	8.3	1,606	8.3	1,555	7.7	1,783	8.6
Military	887	4.3	796	4.0	741	3.8	711	3.5	750	3.6
Faculty / Staff	77	0.4	49	0.2	56	0.3	62	0.3	72	0.3
Institutional	290	1.4	291	1.5	276	1.4	197	1.0	319	1.5
Student Exchange	4	<0.1	5	<0.1	3	<0.1	7	<0.1	7	<0.1
Pacific-Asian	392	1.9	372	1.9	379	2.0	441	2.2	474	2.3
East-West Center	91	0.4	60	0.3	87	0.4	71	0.4	87	0.4
Ethnic Hawaiian	103	0.5	64	0.3	64	0.3	66	0.3	74	0.4
No Data 1/	2	<0.1					657	3.2	707	3.4
MEAN AGE (in years)	27.1		26.7		26.9		26.4		26.3	
ATTENDANCE STATUS:										
Full-Time	366	1.8	213	1.1	397	2.0	415	2.1	489	2.4
Part-Time	20,044	97.5	19,390	98.1	18,996	97.8	19,715	97.4	20,098	97.2
Zero SSH 3/	147	0.7	165	0.8			8	<0.1		
No Data	9	<0.1	7	<0.1	22	0.1	105	0.5	99	0.5
TOTAL SSH TAKEN										
Full-Time	82,019		78,520		80,347		85,115		87,446	
Full-Time	4,222		2,535		4,678		5,160		6,008	
Part-Time	77,756		75,957		75,576		79,609		81,031	
No Data	41		28		93		346		407	

Table 4 (cont.)

CHARACTERISTIC	SUMMER SESSION									
	1999		2000		2001		2002		2003	
	No.	V%	No.	V%	No.	V%	No.	V%	No.	V%
AVERAGE SSH TAKEN		4.0		4.0		4.1		4.2		4.2
Full-Time		11.5		11.9		11.8		12.4		12.3
Part-Time		3.9		3.9		4.0		4.0		4.0
No Data		0.3		4.0		4.2		3.3		4.1
CITIZENSHIP:										
U.S. Citizens	18,246	88.7	17,532	88.7	17,198	88.6	11,874	58.7	11,544	55.8
Foreign	2,202	10.7	2,123	10.7	2,060	10.6	1,427	7.0	1,461	7.1
No Data 1/	118	0.6	120	0.6	157	0.8	6,942	34.3	7,681	37.1
REGISTRATION STATUS:										
Continuing	12,135	59.0	13,083	66.2	12,625	65.0	12,871	63.6	14,772	71.4
Returning	1,390	6.8	1,247	6.3	1,351	7.0	1,021	5.0	929	4.5
First-Time	2,757	13.4	1,817	9.2	1,499	7.7	1,678	8.3	1,365	6.6
Transfer	4,273	20.8	3,628	18.3	3,940	20.3	4,671	23.1	3,620	17.5
No Data	11	0.1					2	<0.1		
ETHNICITY:										
Asian / Pacific Islander	13,552	65.9	12,910	65.3	12,447	64.1	13,187	65.1	13,272	64.2
Japanese	4,907	23.9	4,603	23.3	4,508	23.2	4,629	22.9	4,399	21.3
Chinese	2,048	10.0	1,919	9.7	1,735	8.9	1,787	8.8	1,882	9.1
Korean	763	3.7	740	3.7	738	3.8	808	4.0	845	4.1
Filipino	2,065	10.0	2,059	10.4	1,954	10.1	2,104	10.4	2,155	10.4
Hawaiian / Part Hawn	1,917	9.3	1,821	9.2	1,784	9.2	1,971	9.7	2,069	10.0
Pacific Islander	504	2.5	488	2.5	518	2.7	487	2.4	493	2.4
Other Asian	442	2.1	442	2.2	367	1.9	422	2.1	808	3.9
Mixed Asian / Pac Islander ...	906	4.4	838	4.2	843	4.3	979	4.8	621	3.0
Hispanic	340	1.7	305	1.5	327	1.7	346	1.7	358	1.7
Puerto Rican	78	0.4	66	0.3	60	0.3	76	0.4	65	0.3
Other Hispanic	161	0.8	125	0.6	155	0.8	158	0.8	184	0.9
Mixed Hispanic	101	0.5	114	0.6	112	0.6	112	0.6	109	0.5
Caucasian	3,892	18.9	3,893	19.7	3,636	18.7	3,749	18.5	3,783	18.3
Portuguese	158	0.8	148	0.7	113	0.6	147	0.7	114	0.6
Other Caucasian	3,734	18.2	3,745	18.9	3,523	18.1	3,602	17.8	3,669	17.7
African American	240	1.2	264	1.3	261	1.3	252	1.2	215	1.0
Amer Indian / Alaska Native	66	0.3	50	0.3	32	0.2	49	0.2	41	0.2
Mixed Ethnic Background	1,954	9.5	1,848	9.3	1,954	10.1	2,046	10.1	2,036	9.8
No Response	522	2.5	505	2.6	758	3.9	614	3.0	981	4.7

1/ Increase in No Data subsequent to migration to Banner registration system: Summer 2002 at the UH Community Colleges, Summer 2003 at UH-West O'ahu.

2/ May include some foreign student enrollments for the UH Community Colleges.

3/ Students with zero SSH are students auditing courses for no credit, attending remedial non-credit courses or waiting for courses not currently offered. Zero SSH data no longer counted, effective Fall 2000, but may persist due to data processing anomalies.

Note: Data have been updated to include special students (concurrents and early admits) for all years shown.

TABLE 5
SELECTED CHARACTERISTICS OF CREDIT STUDENTS, BY UNIT
UNIVERSITY OF HAWAI'I
SUMMER 2003

CHARACTERISTIC	TOTAL 1/ No. V%		UH AT MANOA						UH AT HILO		UH - WEST O'AHU		UH COMMUNITY COLLEGES	
			SUM SESSION I No. V%		SUM SESSION II No. V%		UNDUPLICATED No. V%		No.	V%	No.	V%	No.	V%
TOTAL	20,686	100.0	4,984	100.0	7,068	100.0	9,497	100.0	950	100.0	293	100.0	7,391	100.0
EDUCATIONAL LEVEL:														
Undergraduate	17,084	82.6	3,856	77.4	4,797	67.9	6,649	70.0	796	83.8	244	83.3	7,391	100.0
Classified	11,552	55.8	2,836	56.9	3,222	45.6	4,460	47.0	483	50.8	201	68.6	4,810	65.1
Freshmen	3,005	14.5	77	1.5	74	1.0	121	1.3	53	5.6			2,801	37.9
Sophomores	2,848	13.8	407	8.2	368	5.2	591	6.2	64	6.7			2,009	27.2
Juniors	1,639	7.9	747	15.0	745	10.5	1,094	11.5	105	11.1	42	14.3		
Seniors	4,060	19.6	1,605	32.2	2,035	28.8	2,654	27.9	261	27.5	159	54.3		
Unclassified	3,937	19.0	1,020	20.5	1,575	22.3	2,189	23.0	313	32.9	43	14.7	986	13.3
No Data	1,595	7.7											1,595	21.6
Graduate	3,503	16.9	1,105	22.2	2,244	31.7	2,805	29.5	154	16.2				
Classified	1,898	9.2	697	14.0	1,184	16.8	1,508	15.9	17	1.8				
Unclassified	1,605	7.8	408	8.2	1,060	15.0	1,297	13.7	137	14.4				
No Data	99	0.5	23	0.5	27	0.4	43	0.5			49	16.7		
GENDER:														
Men	7,814	37.8	2,045	41.0	2,735	38.7	3,679	38.7	335	35.3	80	27.3	2,619	35.4
Women	12,815	62.0	2,929	58.8	4,314	61.0	5,795	61.0	615	64.7	213	72.7	4,744	64.2
No Data	57	0.3	10	0.2	19	0.3	23	0.2					28	0.4
PERMANENT HOME ADDRESS:														
Hawai'i	14,813	71.6	3,901	78.3	4,067	57.5	5,936	62.5	668	70.3	161	54.9	6,016	81.4
O'ahu	12,254	59.2	3,547	71.2	3,696	52.3	5,392	56.8	29	3.1	106	36.2	4,876	66.0
Honolulu	6,515	31.5	2,088	41.9	2,160	30.6	3,172	33.4	11	1.2	22	7.5	2,234	30.2
Leeward	4,285	20.7	1,024	20.5	1,047	14.8	1,527	16.1	11	1.2	73	24.9	2,130	28.8
Windward	1,454	7.0	435	8.7	489	6.9	693	7.3	7	0.7	11	3.8	512	6.9
Hawai'i	1,082	5.2	157	3.2	144	2.0	227	2.4	559	58.8	8	2.7	214	2.9
Kaua'i	416	2.0	58	1.2	91	1.3	116	1.2	33	3.5	16	5.5	218	2.9
Maui County	1,030	5.0	139	2.8	135	1.9	200	2.1	47	4.9	31	10.6	678	9.2
No Data	31	0.1			1	<0.1	1	<0.1					30	0.4
Other than Hawai'i	2,370	11.5	987	19.8	982	13.9	1,488	15.7	230	24.2	6	2.0	165	2.2
U.S. Mainland	1,597	7.7	646	13.0	638	9.0	988	10.4	146	15.4	6	2.0	161	2.2
U.S. Possessions	108	0.5	39	0.8	32	0.5	53	0.6	37	3.9				
Foreign	665	3.2	302	6.1	312	4.4	447	4.7	47	4.9			4	0.1
No Data 2/	3,503	16.9	96	1.9	2,019	28.6	2,073	21.8	52	5.5	126	43.0	1,210	16.4
CITIZENSHIP:														
United States	11,544	55.8	4,344	87.2	6,256	88.5	8,389	88.3	788	82.9	8	2.7	148	2.0
Other	1,461	7.1	586	11.8	713	10.1	979	10.3	162	17.1				
No Data	7,681	37.1	54	1.1	99	1.4	129	1.4			285	97.3	7,243	98.0

Table 5 (cont.)

CHARACTERISTIC	TOTAL 1/ No. V%		UH AT MANOA						UH AT HILO		UH - WEST O'AHU		UH COMMUNITY COLLEGES	
			SUM SESSION I No. V%		SUM SESSION II No. V%		UNDUPLICATED No. V%		No.	V%	No.	V%	No.	V%
TUITION STATUS:														
Resident Subtotal	15,316	74.0	3,368	67.6	4,780	67.6	6,383	67.2	632	66.5	256	87.4	6,280	85.0
Resident	15,010	72.6	3,281	65.8	4,669	66.1	6,228	65.6	623	65.6	251	85.7	6,186	83.7
Resident Converted	306	1.5	87	1.7	111	1.6	155	1.6	9	0.9	5	1.7	94	1.3
Non Resident Subtotal	4,663	22.5	1,379	27.7	1,847	26.1	2,533	26.7	318	33.5	37	12.6	1,082	14.6
Not Exempted	2,446	11.8	752	15.1	1,017	14.4	1,424	15.0	217	22.8	7	2.4	453	6.1
Western Undergrad Exch 3/	434	2.1	183	3.7	195	2.8	277	2.9	56	5.9				
Exempted	1,783	8.6	444	8.9	635	9.0	832	8.8	45	4.7	30	10.2	629	8.5
Military	750	3.6	90	1.8	127	1.8	166	1.7	1	0.1	26	8.9	506	6.8
Faculty / Staff	72	0.3	30	0.6	32	0.5	50	0.5	1	0.1			9	0.1
Institutional	319	1.5	54	1.1	178	2.5	203	2.1	34	3.6	4	1.4	49	0.7
Student Exchange	7	<0.1	2	<0.1	1	<0.1	2	<0.1	3	0.3			1	<0.1
Pacific-Asian	474	2.3	205	4.1	232	3.3	322	3.4					37	0.5
East-West Center	87	0.4	41	0.8	45	0.6	58	0.6	1	0.1				
Ethnic Hawaiian	74	0.4	22	0.4	20	0.3	31	0.3	5	0.5			27	0.4
No Data	707	3.4	237	4.8	441	6.2	581	6.1					29	0.4
AGE:														
Mean Age	26.3		24.7		27.2		26.6		29.3		31.8		25.8	
Under 18	588	2.8	53	1.1	149	2.1	186	2.0	29	3.1			357	4.8
18-19	3,143	15.2	731	14.7	827	11.7	1,206	12.7	151	15.9	2	0.7	1,432	19.4
20-21	4,317	20.9	1,248	25.0	1,384	19.6	2,046	21.5	157	16.5	19	6.5	1,509	20.4
22-24	4,257	20.6	1,296	26.0	1,541	21.8	2,124	22.4	169	17.8	55	18.8	1,196	16.2
25-29	3,293	15.9	834	16.7	1,224	17.3	1,585	16.7	117	12.3	77	26.3	1,041	14.1
30-34	1,793	8.7	353	7.1	658	9.3	824	8.7	67	7.1	38	13.0	677	9.2
35-59	3,184	15.4	460	9.2	1,252	17.7	1,485	15.6	246	25.9	92	31.4	1,134	15.3
60 and over	83	0.4	9	0.2	31	0.4	39	0.4	14	1.5	2	0.7	27	0.4
No Data	28	0.1			2	<0.1	2	<0.1			8	2.7	18	0.2
ATTENDANCE STATUS:														
Full-Time	489	2.4	17	0.3	293	4.1	NOT APPLICABLE		43	4.5	1	0.3	135	1.8
Part-Time	20,098	97.2	4,944	99.2	6,748	95.5			907	95.5	243	82.9	7,256	98.2
No Data	99	0.5	23	0.5	27	0.4					49	16.7		
TOTAL SSH TAKEN														
Full-Time	87,446		19,182		30,125		NOT APPLICABLE		4,274		1,231		32,634	
Part-Time	6,008		162		3,555				570		12		1,709	
No Data	81,031		18,937		26,451				3,704		1,014		30,925	
	407		83		119						205			
AVERAGE SSH TAKEN														
Full-Time		4.2		3.8		4.3	NOT APPLICABLE		4.5		4.2		4.4	
Part-Time		12.3		9.5		12.1			13.3		12.0		12.7	
No Data		4.0		3.8		3.9			4.1		4.2		4.3	
		4.1		3.6		4.4					4.2			

Table 5 (cont.)

CHARACTERISTIC	TOTAL 1/ No. V%		UH AT MANOA				UH AT HILO		UH - WEST O'AHU		UH COMMUNITY COLLEGES			
			SUM SESSION I No. V%		SUM SESSION II No. V%		UNDUPLICATED No. V%		No.	V%	No.	V%	No.	V%
FTE STUDENT ENROLLMENT ..	6,049		1,340		2,156		NOT APPLICABLE		295		83		2,175	
REGISTRATION STATUS:														
Continuing	14,772	71.4	3,694	74.1	4,904	69.4	NOT APPLICABLE		627	66.0	243	82.9	5,304	71.8
Returning	929	4.5	134	2.7	334	4.7			54	5.7	7	2.4	400	5.4
First-Time 4/	1,365	6.6	187	3.8	467	6.6			41	4.3			670	9.1
Transfer	3,620	17.5	969	19.4	1,363	19.3			228	24.0	43	14.7	1,017	13.8
ETHNICITY:														
Asian / Pacific Islander	13,272	64.2	3,191	64.0	4,432	62.7	5,933	62.5	516	54.3	145	49.5	4,988	67.5
Japanese	4,399	21.3	1,219	24.5	1,585	22.4	2,185	23.0	175	18.4	33	11.3	1,387	18.8
Chinese	1,882	9.1	582	11.7	735	10.4	983	10.4	30	3.2	6	2.0	529	7.2
Korean	845	4.1	239	4.8	302	4.3	390	4.1	25	2.6	4	1.4	275	3.7
Filipino	2,155	10.4	371	7.4	545	7.7	719	7.6	79	8.3	35	11.9	1,125	15.2
Hawaiian / Part-Hawn	2,069	10.0	313	6.3	514	7.3	673	7.1	137	14.4	45	15.4	1,060	14.3
Pacific Islander	493	2.4	89	1.8	225	3.2	267	2.8	38	4.0	8	2.7	133	1.8
Other Asian 5/	808	3.9	119	2.4	191	2.7	243	2.6	5	0.5	14	4.8	479	6.5
Mixed Asian / Pac Islander	621	3.0	259	5.2	335	4.7	473	5.0	27	2.8				
Hispanic	358	1.7	75	1.5	102	1.4	141	1.5	18	1.9	8	2.7	155	2.1
Puerto Rican	65	0.3	16	0.3	16	0.2	24	0.3	2	0.2	2	0.7	29	0.4
Other Hispanic	184	0.9	36	0.7	49	0.7	67	0.7	2	0.2	3	1.0	94	1.3
Mixed Hispanic	109	0.5	23	0.5	37	0.5	50	0.5	14	1.5	3	1.0	32	0.4
Caucasian	3,783	18.3	917	18.4	1,315	18.6	1,768	18.6	301	31.7	88	30.0	1,162	15.7
Portuguese	114	0.6	22	0.4	33	0.5	45	0.5	7	0.7	5	1.7	47	0.6
Other Caucasian	3,669	17.7	895	18.0	1,282	18.1	1,723	18.1	294	30.9	83	28.3	1,115	15.1
African American	215	1.0	42	0.8	40	0.6	65	0.7	8	0.8	7	2.4	118	1.6
Amer Indian / Alaska Native	41	0.2	10	0.2	19	0.3	26	0.3	1	0.1			11	0.1
Mixed Ethnic Background	2,036	9.8	483	9.7	597	8.4	844	8.9	106	11.2	41	14.0	809	10.9
No Response	981	4.7	266	5.3	563	8.0	720	7.6			4	1.4	148	2.0

1/ Total excludes unduplicated count at UH Manoa.

2/ May include some foreign student enrollment for the UH Community Colleges.

3/ Western Undergraduate Exchange students, who pay 1.5 times the resident tuition.

4/ Summer only students are allowed to enroll for classes based upon their self-reported admissibility.

They are not required to provide transcripts and are not eligible for subsequent classification as continuing students.

TABLE 6
SELECTED CHARACTERISTICS OF CREDIT STUDENTS
UNIVERSITY OF HAWAI'I, COMMUNITY COLLEGES
SUMMER 2003

SELECTED CHARACTERISTICS	TOTAL		Hawai'i		Honolulu		Kapi'olani		Kaua'i		Leeward		Maui		Windward	
	No.	V%	No.	V%	No.	V%	No.	V%	No.	V%	No.	V%	No.	V%	No.	V%
TOTAL	7,391	100.0	185	100.0	1,213	100.0	2,883	100.0	169	100.0	1,894	100.0	736	100.0	311	100.0
EDUCATIONAL LEVEL:																
Freshmen	2,801	37.9	89	48.1	519	42.8	926	32.1	21	12.4	845	44.6	256	34.8	145	46.6
Sophomores	2,009	27.2	49	26.5	256	21.1	910	31.6	34	20.1	514	27.1	188	25.5	58	18.6
Unclassified	986	13.3	15	8.1	161	13.3	394	13.7	91	53.8	84	4.4	182	24.7	59	19
No Data	1,595	21.6	32	17.3	277	22.8	653	22.7	23	13.6	451	23.8	110	14.9	49	16
EDUCATIONAL OBJECTIVE:																
Associate in Arts	3,534	47.8	79	42.7	490	40.4	1,248	43.3	26	15.4	1,198	63.3	290	39.4	203	65.3
Associate in Science	1,109	15.0	41	22.2	276	22.8	503	17.4	13	7.7	144	7.6	132	17.9		
Associate in Sci - Transfer	754	10.2	21	11.4	83	6.8	503	17.4	2	1.2	54	2.9	91	12.4		
Associate in Applied Science ..	355	4.8	20	10.8	193	15.9			11	6.5	90	4.8	41	5.6		
Associate in Tech Studies	8	0.1					8	0.3								
Cert of Achievement	102	1.4	16	8.6	4	0.3	45	1.6	16	9.5	4	0.2	17	2.3		
Cert of Completion	57	0.8	2	1.1	5	0.4	32	1.1			13	0.7	5	0.7		
Unclassified	986	13.3	15	8.1	161	13.3	394	13.7	91	53.8	84	4.4	182	24.7	59	19.0
No Data	1,595	21.6	32	17.3	277	22.8	653	22.7	23	13.6	451	23.8	110	14.9	49	15.8
MAJOR PROGRAM AREA:																
General & Pre-Prof	3,534	47.8	79	42.7	490	40.4	1,248	43.3	26	15.4	1,198	63.3	290	39.4	203	65.3
Career & Technical Ed	1,276	17.3	59	31.9	285	23.5	588	20.4	29	17.2	161	8.5	154	20.9		
Unclassified	986	13.3	15	8.1	161	13.3	394	13.7	91	53.8	84	4.4	182	24.7	59	19.0
No Data	1,595	21.6	32	17.3	277	22.8	653	22.7	23	13.6	451	23.8	110	14.9	49	15.8
GENDER:																
Men	2,619	35.4	33	17.8	486	40.1	1,093	37.9	59	34.9	644	34.0	217	29.5	87	28.0
Women	4,744	64.2	151	81.7	713	58.7	1,781	61.8	110	65.1	1,247	65.8	518	70.4	224	72.0
No Data	28	0.4	1	0.5	14	1.2	9	0.3			3	0.2	1	0.1		
PERMANENT HOME ADDRESS:																
Hawai'i	6,016	81.4	138	74.6	841	69.3	2,336	81.0	131	77.5	1,711	90.3	657	89.3	202	65.0
O'ahu	4,876	66.0	8	4.3	786	64.8	2,190	76.0	2	1.2	1,672	88.3	19	2.6	199	64.0
Honolulu	2,234	30.2			461	38.0	1,526	52.9	2	1.2	225	11.9	8	1.1	12	3.9
Leeward	2,130	28.8	6	3.2	251	20.7	473	16.4			1,389	73.3	6	0.8	5	1.6
Windward	512	6.9	2	1.1	74	6.1	191	6.6			58	3.1	5	0.7	182	58.5
Hawai'i	214	2.9	114	61.6	21	1.7	60	2.1			13	0.7	3	0.4	3	1.0
Kaua'i	218	2.9	7	3.8	18	1.5	37	1.3	129	76.3	15	0.8	12	1.6		
Maui County	678	9.2	9	4.9	13	1.1	41	1.4			9	0.5	606	82.3		
No Data	30	0.4			3	0.2	8	0.3			2	0.1	17	2.3		
Other than Hawai'i	165	2.2	1	0.5	53	4.4	58	2.0	1	0.6	41	2.2	6	0.8	5	1.6
U.S. Mainland	161	2.2	1	0.5	52	4.3	56	1.9	1	0.6	41	2.2	6	0.8	4	1.3
Foreign	4	0.1			1	0.1	2	0.1							1	0.3
No Data 1/	1,210	16.4	46	24.9	319	26.3	489	17.0	37	21.9	142	7.5	73	9.9	104	33.4

Table 6 (cont.)

SELECTED CHARACTERISTICS	TOTAL		Hawai'i		Honolulu		Kapi'olani		Kaua'i		Leeward		Maui		Windward	
	No.	V%	No.	V%	No.	V%	No.	V%	No.	V%	No.	V%	No.	V%	No.	V%
CITIZENSHIP STATUS:																
U.S. Citizen	148	2.0	1	0.5	9	0.7	64	2.2	3	1.8	69	3.6			2	0.6
No Data 2/	7,243	98.0	184	99.5	1,204	99.3	2,819	97.8	166	98.2	1,825	96.4	736	100.0	309	99.4
TUITION STATUS:																
Residents	6,280	85.0	173	93.5	862	71.1	2,442	84.7	164	97.0	1,671	88.2	690	93.8	278	89.4
Resident	6,186	83.7	172	93.0	850	70.1	2,393	83.0	161	95.3	1,649	87.1	690	93.8	271	87.1
Resident Converted	94	1.3	1	0.5	12	1.0	49	1.7	3	1.8	22	1.2			7	2.3
Non-Residents	1,082	14.6	12	6.5	349	28.8	427	14.8	5	3.0	210	11.1	46	6.3	33	10.6
Not Exempted	453	6.1	7	3.8	28	2.3	316	11.0	4	2.4	50	2.6	40	5.4	8	2.6
Exempted	629	8.5	5	2.7	321	26.5	111	3.9	1	0.6	160	8.4	6	0.8	25	8.0
Military	506	6.8			302	24.9	44	1.5			138	7.3	2	0.3	20	6.4
Faculty / Staff	9	0.1	2	1.1	2	0.2	5	0.2								
Institutional	49	0.7	2	1.1	9	0.7	31	1.1	1	0.6	5	0.3	1	0.1		
Student Exchange	1	<0.1									1	0.1				
Pacific-Asian	37	0.5			7	0.6	24	0.8			5	0.3	1	0.1		
Ethnic Hawaiian	27	0.4	1	0.5	1	0.1	7	0.2			11	0.6	2	0.3	5	1.6
No Data	29	0.4			2	0.2	14	0.5			13	0.7				
AGE:																
Mean Age (in years)	25.8		31.1		26.6		25.1		24.4		25.4		28.0		24.7	
Under 18	357	4.8	11	5.9	107	8.8	85	2.9	28	16.6	46	2.4	47	6.4	33	10.6
18-19	1,432	19.4	28	15.1	192	15.8	487	16.9	54	32.0	432	22.8	153	20.8	86	27.7
20-21	1,509	20.4	19	10.3	162	13.4	672	23.3	21	12.4	460	24.3	117	15.9	58	18.6
22-24	1,196	16.2	16	8.6	193	15.9	573	19.9	15	8.9	287	15.2	77	10.5	35	11.3
25-29	1,041	14.1	28	15.1	172	14.2	469	16.3	12	7.1	248	13.1	82	11.1	30	9.6
30-34	677	9.2	15	8.1	156	12.9	256	8.9	12	7.1	154	8.1	68	9.2	16	5.1
35-59	1,134	15.3	65	35.1	216	17.8	334	11.6	27	16.0	257	13.6	183	24.9	52	16.7
60 and over	27	0.4	3	1.6	3	0.2	3	0.1			10	0.5	7	1.0	1	0.3
No Data	18	0.2			12	1.0	4	0.1					2	0.3		
ATTENDANCE STATUS:																
Full-Time	135	1.8			27	2.2	60	2.1			33	1.7	10	1.4	5	1.6
Part-Time	7,256	98.2	185	100.0	1,186	97.8	2,823	97.9	169	100.0	1,861	98.3	726	98.6	306	98.4
TOTAL SSH TAKEN																
Full-Time	32,634		640		5,007		13,782		621		8,221		2,947		1,416	
Part-Time	1,709				327		785				412		123		62	
	30,925		640		4,680		12,997		621		7,809		2,824		1,354	
AVERAGE SSH TAKEN																
Full-Time Students		4.4		3.5		4.1		4.8		3.7		4.3		4.0		4.6
Part-Time Students		12.7				12.1		13.1				12.5		12.3		12.4
		4.3		3.5		3.9		4.6		3.7		4.2		3.9		4.4

Table 6 (cont.)

SELECTED CHARACTERISTICS	TOTAL		Hawai'i		Honolulu		Kapi'olani		Kaua'i		Leeward		Maui		Windward	
	No.	V%	No.	V%	No.	V%	No.	V%	No.	V%	No.	V%	No.	V%	No.	V%
FTE STUDENT ENROLLMENT ...	2,175		43		334		919		41		548		196		94	
Full-Time	113				22		52				27		8		4	
Part-Time	2,062		43		312		867		41		521		188		90	
General & Pre-Prof	1,076		18		149		396		6		358		85		64	
Career & Tech Ed	410		15		79		218		9		48		41			
Unclassified	257		3		37		114		22		21		43		17	
No Data	432		7		69		191		4		121		27		13	
REGISTRATION STATUS:																
Continuing	5,304	71.8	137	74.1	811	66.9	2,290	79.4	83	49.1	1,346	71.1	446	60.7	191	61.4
Returning	400	5.4	15	8.1	84	6.9	95	3.3	22	13.0	61	3.2	94	12.8	29	9.3
First-Time	670	9.1	29	15.7	190	15.7	144	5.0	59	34.9	107	5.6	101	13.7	40	12.9
Transfer	1,017	13.8	4	2.2	128	10.6	354	12.3	5	3.0	380	20.1	95	12.9	51	16.4
ETHNICITY:																
Asian / Pacific Islander	4,988	67.5	133	71.9	717	59.1	2,160	74.9	118	69.8	1,265	66.8	419	56.9	176	56.6
Japanese	1,387	18.8	24	13.0	134	11.0	748	25.9	29	17.2	322	17.0	97	13.2	33	10.6
Chinese	529	7.2	5	2.7	128	10.6	315	10.9	3	1.8	59	3.1	13	1.8	6	1.9
Korean	275	3.7	1	0.5	36	3.0	188	6.5			43	2.3	6	0.8	1	0.3
Filipino	1,125	15.2	20	10.8	184	15.2	330	11.4	25	14.8	433	22.9	116	15.8	17	5.5
Hawaiian / Part-Hawn	1,060	14.3	80	43.2	144	11.9	281	9.7	49	29.0	262	13.8	151	20.5	93	29.9
Pacific Islander	133	1.8	1	0.5	24	2.0	60	2.1	3	1.8	28	1.5	8	1.1	9	2.9
Other Asian 3/	479	6.5	2	1.1	67	5.5	238	8.3	9	5.3	118	6.2	28	3.8	17	5.5
Hispanic	155	2.1	1	0.5	45	3.7	36	1.2			46	2.4	22	3.0	5	1.6
Puerto Rican	29	0.4			7	0.6	6	0.2			11	0.6	5	0.7		
Other Hispanic	94	1.3	1	0.5	30	2.5	18	0.6			26	1.4	14	1.9	5	1.6
Mixed Hispanic	32	0.4			8	0.7	12	0.4			9	0.5	3	0.4		
Caucasian	1,162	15.7	31	16.8	234	19.3	344	11.9	31	18.3	239	12.6	214	29.1	69	22.2
Portuguese	47	0.6	3	1.6	4	0.3	8	0.3			14	0.7	17	2.3	1	0.3
Other Caucasian	1,115	15.1	28	15.1	230	19.0	336	11.7	31	18.3	225	11.9	197	26.8	68	21.9
African American	118	1.6			67	5.5	22	0.8			23	1.2	3	0.4	3	1.0
Amer Indian / Alaska Native	11	0.1			6	0.5	3	0.1			1	0.1	1	0.1		
Mixed Ethnic Background	809	10.9	15	8.1	106	8.7	279	9.7	18	10.7	271	14.3	72	9.8	48	15.4
No Response	148	2.0	5	2.7	38	3.1	39	1.4	2	1.2	49	2.6	5	0.7	10	3.2

1/ Due to coding incompatibilities, foreign students at the UH Community Colleges may be included in the "No Data" category.

2/ Large number of records with invalid data associated with migration to new student registration system at the UH Community Colleges in Summer 2002.

3/ Includes Mixed Asian and Pacific Islander for Summer 2003.