

TUITION AND FEES SCHEDULE
UNIVERSITY OF HAWAI'I
AY 2006-07 THROUGH AY 2011-12

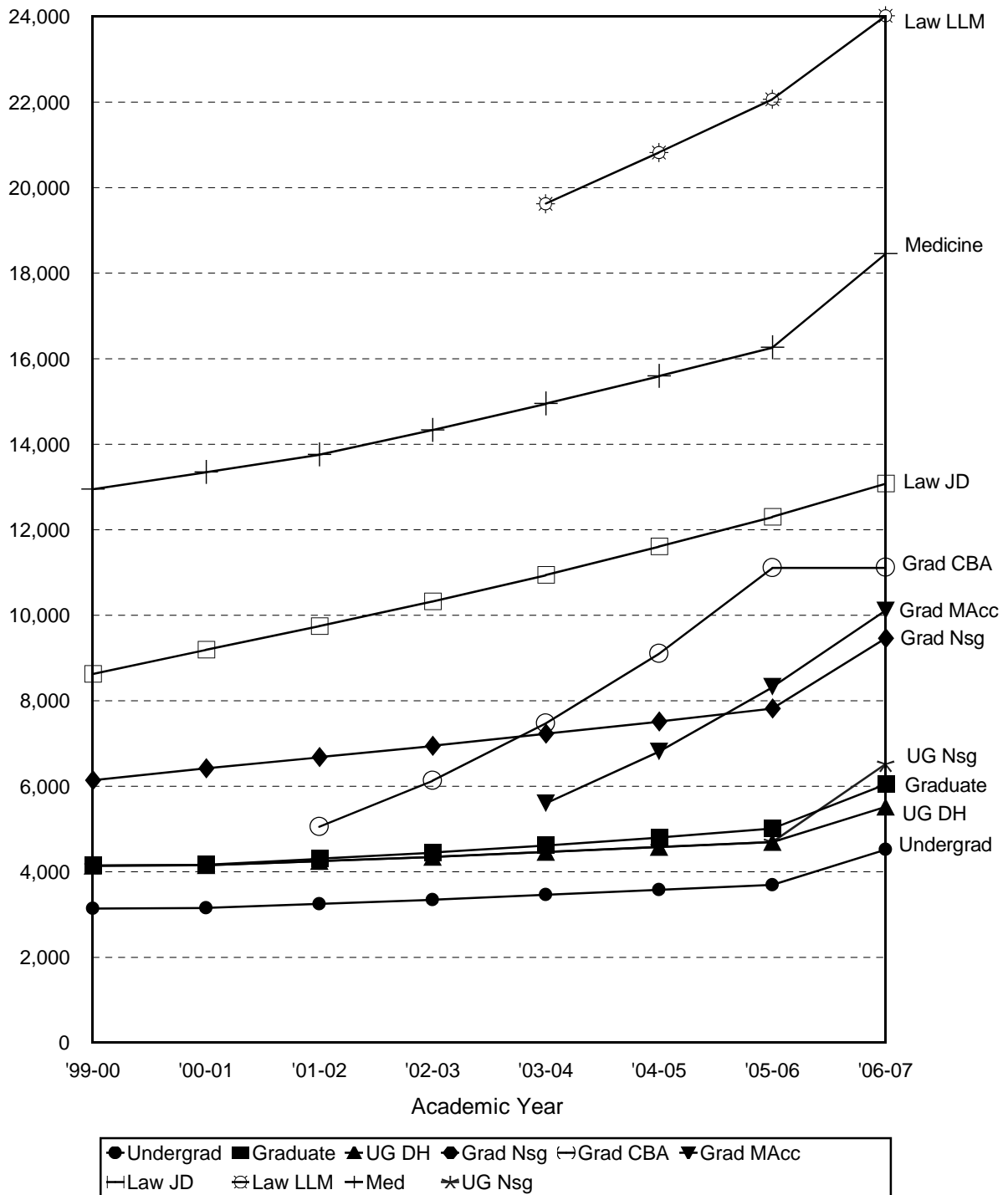
Institutional Research Office
University of Hawai'i
October 2007

File Reference: Management and Planning Support Folder, Finance

Reports available online at: <http://www.hawaii.edu/iro/maps.htm>

University of Hawai'i

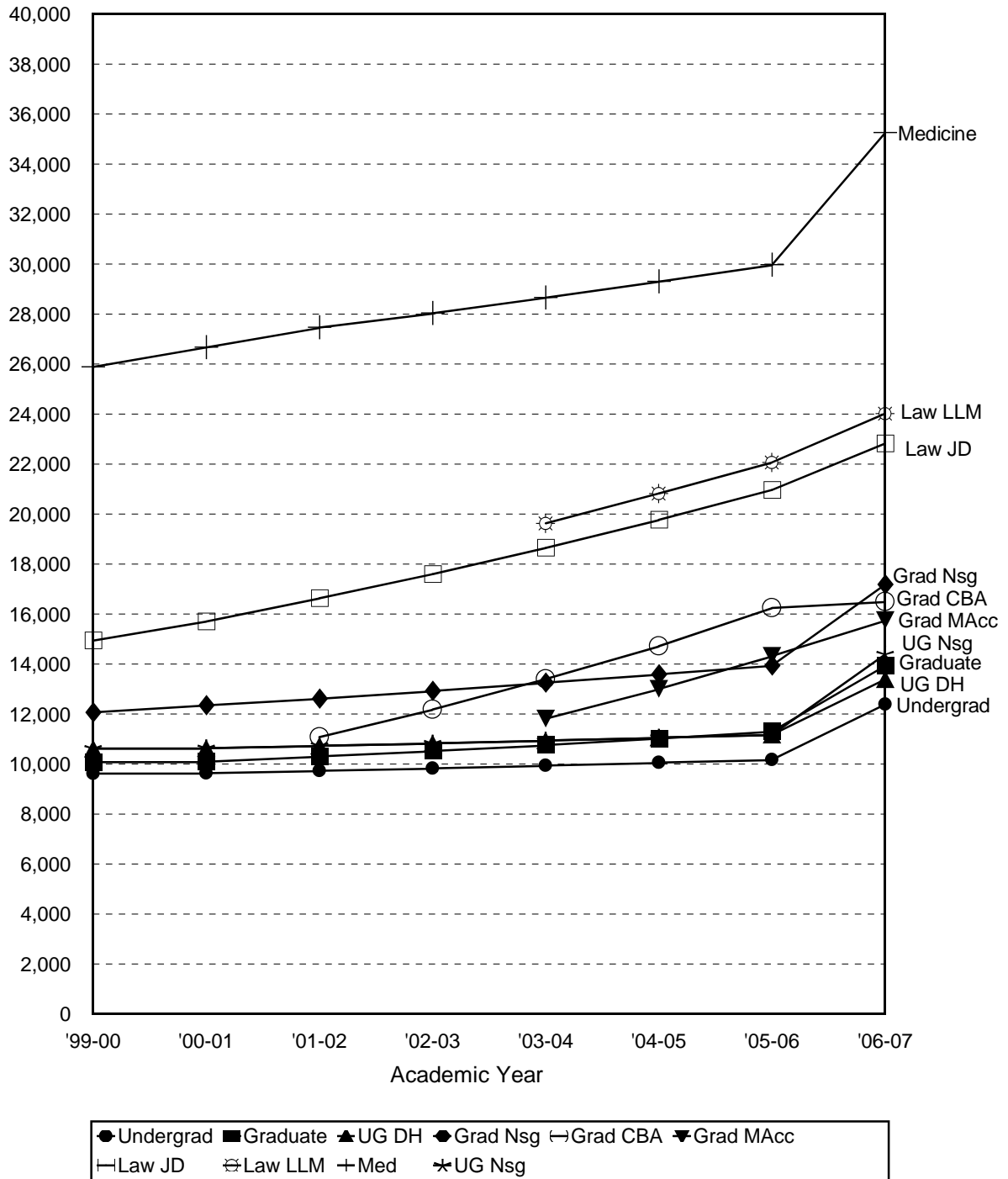
Figure 1
Annual Resident Full-Time Semester Tuition & Fees (12 credits)
AY 1999-00 to AY 2006-07
UH Manoa



Note: Data shown excludes tuition and fee schedules established effective AY 2006-07. These schedules will be added when additional years/data points become available (i.e: AY 2007-08).

University of Hawai'i

Figure 2
 Annual Non-Resident Full-Time Semester Tuition & Fees (12 credits)
 AY 1999-00 to AY 2006-07
 UH Manoa



Note: Data shown excludes tuition and fee schedules established effective AY 2006-07. These schedules will be added when additional years/data points become available (i.e: AY 2007-08).

University of Hawai'i

Figure 3
Annual Resident Full-Time Semester Tuition & Fees (12 credits)
AY 1999-00 to AY 2006-07
UH Hilo, UH West O'ahu, UH Community Colleges

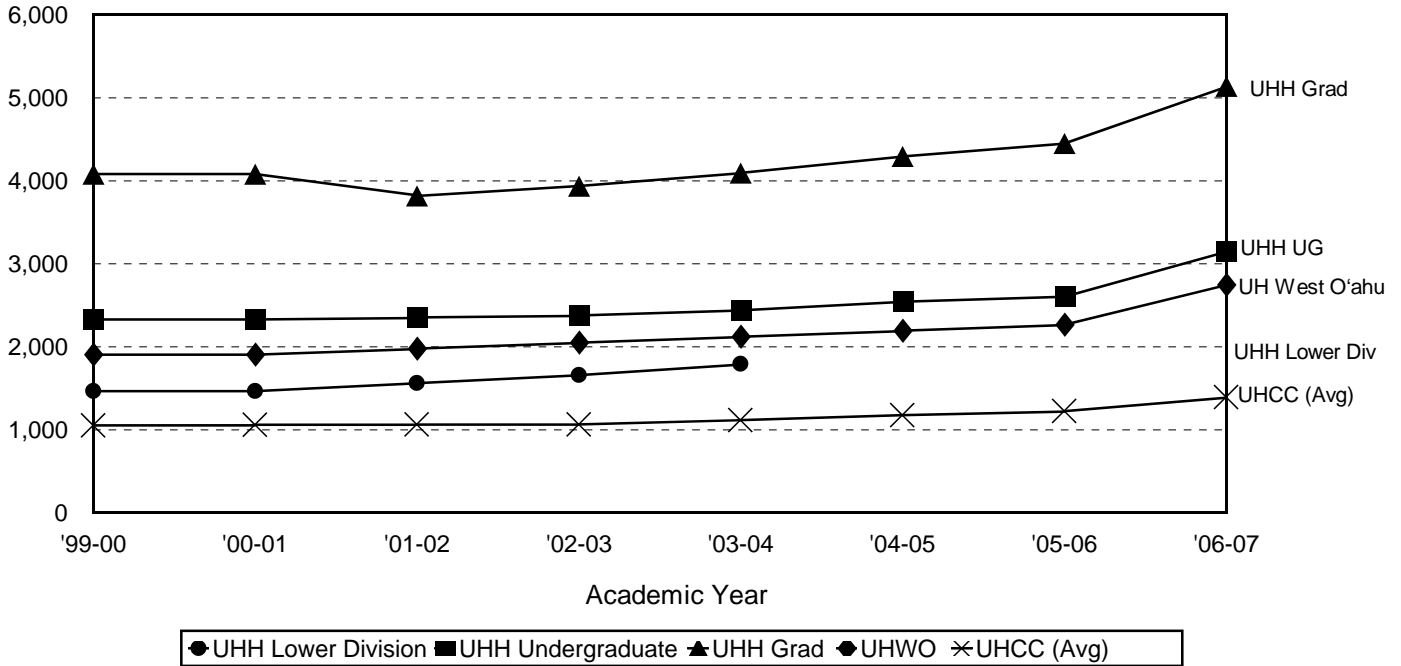
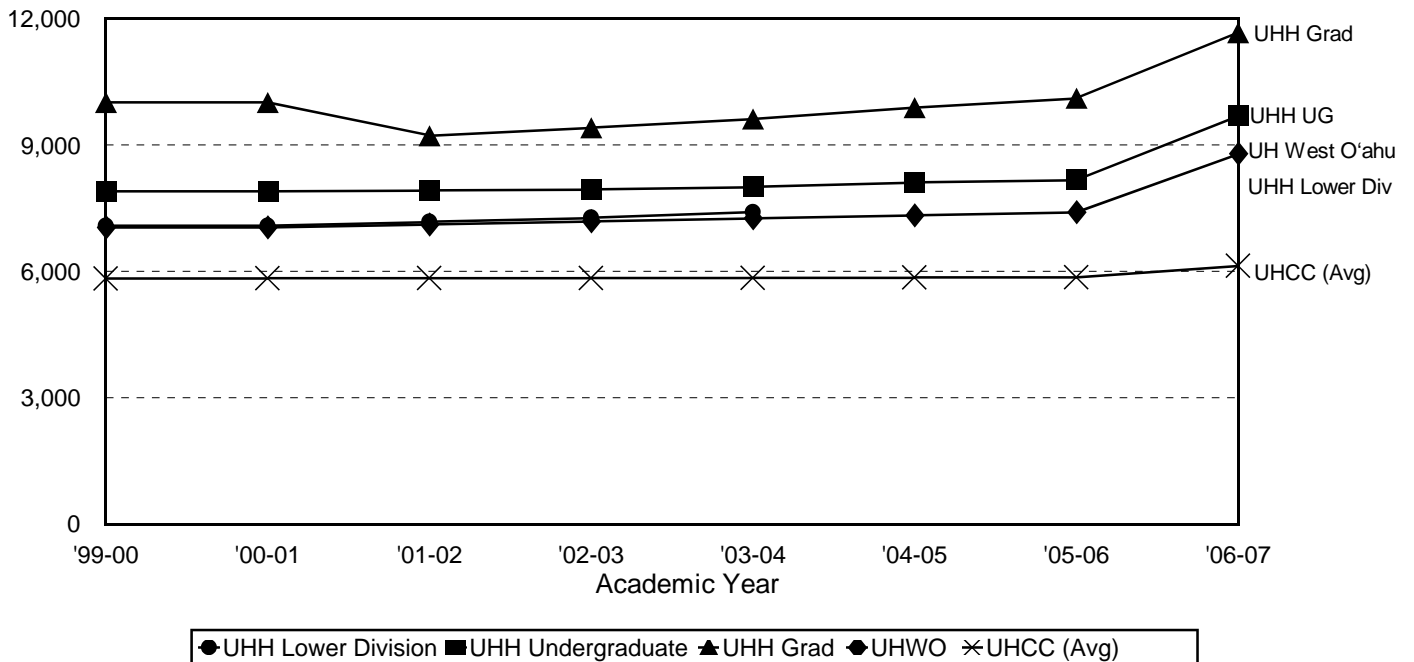


Figure 4
Annual Non-Resident Full-Time Semester Tuition & Fees (12 credits)
AY 1999-00 to AY 2006-07
UH Hilo, UH West O'ahu, UH Community Colleges



Note: Effective AY 2003-04, UH Hilo eliminated its lower division tuition rate. UH Hilo undergraduate students previously enrolled in 2002-03 as classified freshmen or classified sophomores and continuing their enrollment in fall 2003 as classified freshmen or classified sophomores are grandfathered at the lower division tuition rate for AY 2003-04.

TABLE 1
ANNUAL FULL-TIME TUITION AND FEES (12 credits)
UNIVERSITY OF HAWAII
AY 1999-00 TO AY 2006-07

| CAMPUS | ACADEMIC YEAR | | | | | | | | | | | | | | | |
|-------------------------------|---------------|-------|-----------|-------|-----------|-------|-----------|-------|-----------|-------|-----------|-------|-----------|-------|-----------|-------|
| | 1999-00 | | 2000-01 | | 2001-02 | | 2002-03 | | 2003-04 | | 2004-05 | | 2005-06 | | 2006-07 | |
| | \$ | % Chg | \$ | % Chg | \$ | % Chg | \$ | % Chg | \$ | % Chg | \$ | % Chg | \$ | % Chg | \$ | % Chg |
| UH MANOA | | | | | | | | | | | | | | | | |
| Undergraduate | | | | | | | | | | | | | | | | |
| Resident..... | 3,141.40 | 3.2 | 3,156.40 | 0.5 | 3,252.40 | 3.0 | 3,348.40 | 3.0 | 3,464.40 | 3.5 | 3,580.40 | 3.3 | 3,696.40 | 3.2 | 4,522.40 | 22.3 |
| Non-resident..... | 9,621.40 | 1.0 | 9,636.40 | 0.2 | 9,732.40 | 1.0 | 9,828.40 | 1.0 | 9,944.40 | 1.2 | 10,060.40 | 1.2 | 10,176.40 | 1.2 | 12,394.40 | 21.8 |
| Graduate | | | | | | | | | | | | | | | | |
| Resident..... | 4,149.40 | 3.0 | 4,164.40 | 0.4 | 4,308.40 | 3.5 | 4,452.40 | 3.3 | 4,616.40 | 3.7 | 4,804.40 | 4.1 | 5,012.40 | 4.3 | 6,054.40 | 20.8 |
| Non-resident..... | 10,077.40 | 1.2 | 10,092.40 | 0.1 | 10,308.40 | 2.1 | 10,524.40 | 2.1 | 10,760.40 | 2.2 | 11,020.40 | 2.4 | 11,300.40 | 2.5 | 13,926.40 | 23.2 |
| Undergraduate Architecture 1/ | | | | | | | | | | | | | | | | |
| Resident..... | | | | | | | | | | | | | | | 4,922.40 | N/A |
| Non-resident..... | | | | | | | | | | | | | | | 12,794.40 | N/A |
| Undergraduate Business 2/ | | | | | | | | | | | | | | | | |
| Resident..... | | | | | | | | | | | | | | | 4,922.40 | N/A |
| Non-resident..... | | | | | | | | | | | | | | | 12,794.40 | N/A |
| Undergrad Dental Hygiene 3/ | | | | | | | | | | | | | | | | |
| Resident..... | 4,141.40 | N/A | 4,156.40 | 0.4 | 4,252.40 | 2.3 | 4,348.40 | 2.3 | 4,464.40 | 2.7 | 4,580.40 | 2.6 | 4,696.40 | 2.5 | 5,522.40 | 17.6 |
| Non-resident..... | 10,621.40 | N/A | 10,636.40 | 0.1 | 10,732.40 | 0.9 | 10,828.40 | 0.9 | 10,944.40 | 1.1 | 11,060.40 | 1.1 | 11,176.40 | 1.0 | 13,394.40 | 19.8 |
| Undergrad Nursing 3/ | | | | | | | | | | | | | | | | |
| Resident..... | 4,141.40 | N/A | 4,156.40 | 0.4 | 4,252.40 | 2.3 | 4,348.40 | 2.3 | 4,464.40 | 2.7 | 4,580.40 | 2.6 | 4,696.40 | 2.5 | 6,522.40 | 38.9 |
| Non-resident..... | 10,621.40 | N/A | 10,636.40 | 0.1 | 10,732.40 | 0.9 | 10,828.40 | 0.9 | 10,944.40 | 1.1 | 11,060.40 | 1.1 | 11,176.40 | 1.0 | 14,394.40 | 28.8 |
| Graduate Architecture 1/ | | | | | | | | | | | | | | | | |
| Resident..... | | | | | | | | | | | | | | | 6,454.40 | N/A |
| Non-resident..... | | | | | | | | | | | | | | | 14,326.40 | N/A |
| Graduate Nursing 4/ | | | | | | | | | | | | | | | | |
| Resident..... | 6,141.40 | N/A | 6,420.40 | 4.5 | 6,684.40 | 4.1 | 6,948.40 | 3.9 | 7,232.40 | 4.1 | 7,516.40 | 3.9 | 7,820.40 | 4.0 | 9,462.40 | 21.0 |
| Non-resident..... | 12,069.40 | N/A | 12,348.40 | 2.3 | 12,612.40 | 2.1 | 12,924.40 | 2.5 | 13,256.40 | 2.6 | 13,588.40 | 2.5 | 13,940.40 | 2.6 | 17,190.40 | 23.3 |
| Graduate CBA Masters 5/ | | | | | | | | | | | | | | | | |
| Resident..... | | | | | 5,052.40 | N/A | 6,132.40 | 21.4 | 7,472.40 | 21.9 | 9,100.40 | 21.8 | 11,108.40 | 22.1 | 11,118.40 | 0.1 |
| Non-resident..... | | | | | 11,076.40 | N/A | 12,180.40 | 10.0 | 13,400.40 | 10.0 | 14,716.40 | 9.8 | 16,244.40 | 10.4 | 16,494.40 | 1.5 |
| Graduate CBA MAcc 6/ | | | | | | | | | | | | | | | | |
| Resident..... | | | | | | | | | 5,600.40 | N/A | 6,810.40 | 21.6 | 8,324.40 | 22.2 | 10,110.40 | 21.5 |
| Non-resident..... | | | | | | | | | 11,816.40 | N/A | 13,002.40 | 10.0 | 14,324.40 | 10.2 | 15,750.40 | 10.0 |
| Law JD | | | | | | | | | | | | | | | | |
| Resident..... | 8,627.40 | 6.2 | 9,194.40 | 6.6 | 9,746.40 | 6.0 | 10,322.40 | 5.9 | 10,942.40 | 6.0 | 11,610.40 | 6.1 | 12,302.40 | 6.0 | 13,080.40 | 6.3 |
| Non-resident..... | 14,939.40 | 5.1 | 15,698.40 | 5.1 | 16,634.40 | 6.0 | 17,594.40 | 5.8 | 18,646.40 | 6.0 | 19,770.40 | 6.0 | 20,966.40 | 6.0 | 22,824.40 | 8.9 |

TABLE 1 (cont.)

| CAMPUS | ACADEMIC YEAR | | | | | | | | | | | | | | | |
|---------------------------|---------------|-------|-----------|-------|-----------|-------|-----------|-------|-----------|-------|-----------|-------|-----------|-------|-----------|-------|
| | 1999-00 | | 2000-01 | | 2001-02 | | 2002-03 | | 2003-04 | | 2004-05 | | 2005-06 | | 2006-07 | |
| | \$ | % Chg | \$ | % Chg | \$ | % Chg | \$ | % Chg | \$ | % Chg | \$ | % Chg | \$ | % Chg | \$ | % Chg |
| Law LLM 7/ | | | | | | | | | | | | | | | | |
| Resident..... | | | | | | | | | 19,630.40 | N/A | 20,826.40 | 6.1 | 22,070.40 | 6.0 | 24,024.40 | 8.9 |
| Non-resident..... | | | | | | | | | 19,630.40 | N/A | 20,826.40 | 6.1 | 22,070.40 | 6.0 | 24,024.40 | 8.9 |
| Medicine | | | | | | | | | | | | | | | | |
| Resident..... | 12,947.40 | 18.4 | 13,346.40 | 3.1 | 13,754.40 | 3.1 | 14,330.40 | 4.2 | 14,950.40 | 4.3 | 15,594.40 | 4.3 | 16,262.40 | 4.3 | 18,456.40 | 13.5 |
| Non-resident..... | 25,883.40 | 5.1 | 26,666.40 | 3.0 | 27,458.40 | 3.0 | 28,034.40 | 2.1 | 28,654.40 | 2.2 | 29,298.40 | 2.2 | 29,966.40 | 2.3 | 35,256.40 | 17.7 |
| UH HILO | | | | | | | | | | | | | | | | |
| Lower Division 8/ | | | | | | | | | | | | | | | | |
| Resident..... | 1,466.00 | 5.2 | 1,466.00 | 0.0 | 1,562.00 | 6.5 | 1,658.00 | 6.1 | 1,792.00 | 8.1 | | | | | | |
| Non-resident..... | 7,082.00 | 1.0 | 7,082.00 | 0.0 | 7,178.00 | 1.4 | 7,274.00 | 1.3 | 7,408.00 | 1.8 | | | | | | |
| Undergraduate 8/ | | | | | | | | | | | | | | | | |
| Resident..... | 2,330.00 | 3.2 | 2,330.00 | 0.0 | 2,354.00 | 1.0 | 2,378.00 | 1.0 | 2,440.00 | 2.6 | 2,543.00 | 4.2 | 2,610.00 | 2.6 | 3,148.00 | 20.6 |
| Non-resident..... | 7,898.00 | 0.9 | 7,898.00 | 0.0 | 7,922.00 | 0.3 | 7,946.00 | 0.3 | 8,008.00 | 0.8 | 8,111.00 | 1.3 | 8,178.00 | 0.8 | 9,700.00 | 18.6 |
| Undergrad-Nursing 9/ | | | | | | | | | | | | | | | | |
| Resident..... | | | | | | | | | | | | | | | 4,148.00 | N/A |
| Non-resident..... | | | | | | | | | | | | | | | 10,700.00 | N/A |
| Graduate 10/ | | | | | | | | | | | | | | | | |
| Resident..... | 4,082.00 | 3.0 | 4,082.00 | 0.0 | 3,818.00 | -6.5 | 3,938.00 | 3.1 | 4,096.00 | 4.0 | 4,295.00 | 4.9 | 4,458.00 | 3.8 | 5,140.00 | 15.3 |
| Non-resident..... | 10,010.00 | 1.2 | 10,010.00 | 0.0 | 9,218.00 | -7.9 | 9,410.00 | 2.1 | 9,616.00 | 2.2 | 9,887.00 | 2.8 | 10,122.00 | 2.4 | 11,668.00 | 15.3 |
| UH WEST O'AHU | | | | | | | | | | | | | | | | |
| Resident..... | 1,906.00 | 3.9 | 1,906.00 | 0.0 | 1,978.00 | 3.8 | 2,050.00 | 3.6 | 2,122.00 | 3.5 | 2,194.00 | 3.4 | 2,266.00 | 3.3 | 2,746.00 | 21.2 |
| Non-resident..... | 7,042.00 | 1.0 | 7,042.00 | 0.0 | 7,114.00 | 1.0 | 7,186.00 | 1.0 | 7,258.00 | 1.0 | 7,330.00 | 1.0 | 7,402.00 | 1.0 | 8,794.00 | 18.8 |
| UH COMMUNITY COLLEGES 11/ | | | | | | | | | | | | | | | | |
| UHCC Average | | | | | | | | | | | | | | | | |
| Resident..... | 1,052.42 | 4.8 | 1,061.00 | 0.8 | 1,063.14 | 0.2 | 1,064.58 | 0.1 | 1,116.14 | 4.8 | 1,175.86 | 5.4 | 1,225.58 | 4.2 | 1,395.00 | 13.8 |
| Non-resident..... | 5,828.42 | 0.8 | 5,837.00 | 0.1 | 5,839.14 | <0.1 | 5,840.58 | <0.1 | 5,844.14 | 0.1 | 5,855.86 | 0.2 | 5,857.58 | <0.1 | 6,136.72 | 4.8 |
| Hawai'i | | | | | | | | | | | | | | | | |
| Resident..... | 1,082.00 | 4.6 | 1,082.00 | 0.0 | 1,082.00 | 0.0 | 1,082.00 | 0.0 | 1,130.00 | 4.4 | 1,240.00 | 9.7 | 1,300.00 | 4.8 | 1,478.00 | 13.7 |
| Non-resident..... | 5,858.00 | 0.8 | 5,858.00 | 0.0 | 5,858.00 | 0.0 | 5,858.00 | 0.0 | 5,858.00 | 0.0 | 5,920.00 | 1.1 | 5,932.00 | 0.2 | 6,110.00 | 3.0 |
| Honolulu | | | | | | | | | | | | | | | | |
| Resident..... | 1,042.00 | 4.8 | 1,052.00 | 1.0 | 1,052.00 | 0.0 | 1,062.00 | 1.0 | 1,110.00 | 4.5 | 1,158.00 | 4.3 | 1,206.00 | 4.1 | 1,374.00 | 13.9 |
| Non-resident..... | 5,818.00 | 0.8 | 5,828.00 | 0.2 | 5,828.00 | 0.0 | 5,838.00 | 0.2 | 5,838.00 | 0.0 | 5,838.00 | 0.0 | 5,838.00 | 0.0 | 6,006.00 | 2.9 |
| Kapi'olani | | | | | | | | | | | | | | | | |
| Resident..... | 1,052.00 | 4.8 | 1,092.00 | 3.8 | 1,092.00 | 0.0 | 1,092.00 | 0.0 | 1,140.00 | 4.4 | 1,188.00 | 4.2 | 1,236.00 | 4.0 | 1,404.00 | 13.6 |
| Non-resident..... | 5,828.00 | 0.8 | 5,868.00 | 0.7 | 5,868.00 | 0.0 | 5,868.00 | 0.0 | 5,868.00 | 0.0 | 5,868.00 | 0.0 | 5,868.00 | 0.0 | 6,036.00 | 2.9 |

TABLE 1 (cont.)

| CAMPUS | ACADEMIC YEAR | | | | | | | | | | | | | | | |
|-------------------|---------------|-------|----------|-------|----------|-------|----------|-------|----------|-------|----------|-------|----------|-------|----------|-------|
| | 1999-00 | | 2000-01 | | 2001-02 | | 2002-03 | | 2003-04 | | 2004-05 | | 2005-06 | | 2006-07 | |
| | \$ | % Chg | \$ | % Chg | \$ | % Chg | \$ | % Chg | \$ | % Chg | \$ | % Chg | \$ | % Chg | \$ | % Chg |
| Kaua'i | | | | | | | | | | | | | | | | |
| Resident..... | 1,042.00 | 4.8 | 1,042.00 | 0.0 | 1,057.00 | 1.4 | 1,057.00 | 0.0 | 1,110.00 | 5.0 | 1,158.00 | 4.3 | 1,206.00 | 4.1 | 1,374.00 | 13.9 |
| Non-resident..... | 5,818.00 | 0.8 | 5,818.00 | 0.0 | 5,833.00 | 0.3 | 5,833.00 | 0.0 | 5,838.00 | 0.1 | 5,838.00 | 0.0 | 5,838.00 | 0.0 | 6,006.00 | 2.9 |
| Leeward | | | | | | | | | | | | | | | | |
| Resident..... | 1,047.00 | 4.8 | 1,057.00 | 1.0 | 1,057.00 | 0.0 | 1,057.00 | 0.0 | 1,105.00 | 4.5 | 1,153.00 | 4.3 | 1,201.00 | 4.2 | 1,369.00 | 14.0 |
| Non-resident..... | 5,823.00 | 0.8 | 5,833.00 | 0.2 | 5,833.00 | 0.0 | 5,833.00 | 0.0 | 5,833.00 | 0.0 | 5,833.00 | 0.0 | 5,833.00 | 0.0 | 6,001.00 | 2.9 |
| Maui | | | | | | | | | | | | | | | | |
| Resident..... | 1,050.00 | 4.8 | 1,050.00 | 0.0 | 1,050.00 | 0.0 | 1,050.00 | 0.0 | 1,098.00 | 4.6 | 1,166.00 | 6.2 | 1,214.00 | 4.1 | 1,382.00 | 13.8 |
| Non-resident..... | 5,826.00 | 0.8 | 5,826.00 | 0.0 | 5,826.00 | 0.0 | 5,826.00 | 0.0 | 5,826.00 | 0.0 | 5,846.00 | 0.3 | 5,846.00 | 0.0 | 6,782.00 | 16.0 |
| Windward | | | | | | | | | | | | | | | | |
| Resident..... | 1,052.00 | 4.8 | 1,052.00 | 0.0 | 1,052.00 | 0.0 | 1,052.00 | 0.0 | 1,120.00 | 6.5 | 1,168.00 | 4.3 | 1,216.00 | 4.1 | 1,384.00 | 13.8 |
| Non-resident..... | 5,828.00 | 0.8 | 5,828.00 | 0.0 | 5,828.00 | 0.0 | 5,828.00 | 0.0 | 5,848.00 | 0.3 | 5,848.00 | 0.0 | 5,848.00 | 0.0 | 6,016.00 | 2.9 |

Note: Tuition and fees are subject to change.

1/ Effective AY 2006-07, undergraduate and graduate architecture students (resident and non-resident) pay a \$200 professional fee per semester throughout 7-year program.

2/ Effective AY 2006-07, undergraduate business students (resident and non-resident) pay an additional \$200 professional fee.

3/ From AY 1999-00 through 2005-06, undergraduate resident and non-resident nursing and dental hygiene students at UHM enrolled in clinical courses in the regular program and through distance learning pay a \$500 per semester professional fee for no more than six semesters. Effective AY 2006-07, undergraduate nursing students pay a \$1000 professional fee per semester for no more than six semesters, while undergraduate dental hygiene students continue to pay a \$500 professional fee for no more than six semesters.

4/ Nursing graduate tuition was established in AY 1999-00.

5/ College of Business Administration graduate tuition was established in AY 2001-02 and applies to current and future masters degrees offered by the college, except the Master of Accountancy program. The CBA masters degrees offered in executive format charge the resident tuition established here plus additional fees delegated to and approved by the President.

6/ Master of Accountancy (MAcc) tuition was established in AY 2003-04.

7/ Master in Law (LLM) tuition was established in AY 2003-04.

8/ Effective AY 2003-04, UH Hilo eliminated its lower division tuition rate. UH Hilo undergraduate students previously enrolled in 2002-03 as classified freshmen or classified sophomores and continuing their enrollment in fall 2003 as classified freshmen or classified sophomores are grandfathered at the lower division tuition schedule for AY 2003-04. Correction made to fees for AY 2005-06; rates will not tie to what has been previously published.

9/ Effective AY 2006-07, UHH undergraduate nursing students (resident and non-resident) pay an additional \$500 professional fee per semester.

10/ UHH graduate tuition was established in AY 1998-99 and was based on UHM graduate tuition rates. In AY 2001-02, UHH established its own graduate tuition rate, separate from UHM. Correction made to fees for AY 2005-06; rates will not tie to what has been previously published.

11/ Effective AY 2001-02, UH community college tuition is charged on a per-credit basis for all enrolled credits. The amount shown here is based on 12 enrolled credits per semester and is shown for comparative purposes only. Student fees vary at each campus, so a 12-credit average fee is used.

TABLE 2
 FULL-TIME TUITION AND FEES SCHEDULE (12 credits) 1/
 UNIVERSITY OF HAWAI'I
 AY 2006-07

| CAMPUS | RESIDENT | | | | | | NON-RESIDENT | | | | | |
|-----------------------------------|-----------|----------|-----------|-----------|----------|-----------|--------------|----------|-----------|-----------|----------|-----------|
| | Semester | | | Annual | | | Semester | | | Annual | | |
| | Tuition | Fees | Total | Tuition | Fees | Total | Tuition | Fees | Total | Tuition | Fees | Total |
| UH MANOA | | | | | | | | | | | | |
| Undergraduate | 2,160.00 | 101.20 | 2,261.20 | 4,320.00 | 202.40 | 4,522.40 | 6,096.00 | 101.20 | 6,197.20 | 12,192.00 | 202.40 | 12,394.40 |
| Graduate | 2,916.00 | 111.20 | 3,027.20 | 5,832.00 | 222.40 | 6,054.40 | 6,852.00 | 111.20 | 6,963.20 | 13,704.00 | 222.40 | 13,926.40 |
| Undergrad-Architecture 2/..... | 2,160.00 | 301.20 | 2,461.20 | 4,320.00 | 602.40 | 4,922.40 | 6,096.00 | 301.20 | 6,397.20 | 12,192.00 | 602.40 | 12,794.40 |
| Undergrad-Business 3/..... | 2,160.00 | 301.20 | 2,461.20 | 4,320.00 | 602.40 | 4,922.40 | 6,096.00 | 301.20 | 6,397.20 | 12,192.00 | 602.40 | 12,794.40 |
| Undergrad-Dental Hygiene 4/ | 2,160.00 | 601.20 | 2,761.20 | 4,320.00 | 1,202.40 | 5,522.40 | 6,096.00 | 601.20 | 6,697.20 | 12,192.00 | 1,202.40 | 13,394.40 |
| Undergrad-Nursing 4/..... | 2,160.00 | 1,101.20 | 3,261.20 | 4,320.00 | 2,202.40 | 6,522.40 | 6,096.00 | 1,101.20 | 7,197.20 | 12,192.00 | 2,202.40 | 14,394.40 |
| Graduate-Architecture 2/..... | 2,916.00 | 311.20 | 3,227.20 | 5,832.00 | 622.40 | 6,454.40 | 6,852.00 | 311.20 | 7,163.20 | 13,704.00 | 622.40 | 14,326.40 |
| Graduate - CBA Masters 5/ | 5,448.00 | 111.20 | 5,559.20 | 10,896.00 | 222.40 | 11,118.40 | 8,136.00 | 111.20 | 8,247.20 | 16,272.00 | 222.40 | 16,494.40 |
| Graduate - CBA MAcc | 4,944.00 | 111.20 | 5,055.20 | 9,888.00 | 222.40 | 10,110.40 | 7,764.00 | 111.20 | 7,875.20 | 15,528.00 | 222.40 | 15,750.40 |
| Graduate-Nursing | 4,620.00 | 111.20 | 4,731.20 | 9,240.00 | 222.40 | 9,462.40 | 8,484.00 | 111.20 | 8,595.20 | 16,968.00 | 222.40 | 17,190.40 |
| Law - JD | 6,444.00 | 96.20 | 6,540.20 | 12,888.00 | 192.40 | 13,080.40 | 11,316.00 | 96.20 | 11,412.20 | 22,632.00 | 192.40 | 22,824.40 |
| Law - LLM | 11,916.00 | 96.20 | 12,012.20 | 23,832.00 | 192.40 | 24,024.40 | 11,916.00 | 96.20 | 12,012.20 | 23,832.00 | 192.40 | 24,024.40 |
| Medicine | 9,132.00 | 96.20 | 9,228.20 | 18,264.00 | 192.40 | 18,456.40 | 17,532.00 | 96.20 | 17,628.20 | 35,064.00 | 192.40 | 35,256.40 |
| UH HILO 6/ | | | | | | | | | | | | |
| Undergraduate | 1,500.00 | 74.00 | 1,574.00 | 3,000.00 | 148.00 | 3,148.00 | 4,776.00 | 74.00 | 4,850.00 | 9,552.00 | 148.00 | 9,700.00 |
| Undergrad-Nursing 7/ | 1,500.00 | 574.00 | 2,074.00 | 3,000.00 | 1,148.00 | 4,148.00 | 4,776.00 | 574.00 | 5,350.00 | 9,552.00 | 1,148.00 | 10,700.00 |
| Graduate | 2,496.00 | 74.00 | 2,570.00 | 4,992.00 | 148.00 | 5,140.00 | 5,760.00 | 74.00 | 5,834.00 | 11,520.00 | 148.00 | 11,668.00 |
| UH WEST O'AHU | 1,368.00 | 5.00 | 1,373.00 | 2,736.00 | 10.00 | 2,746.00 | 4,392.00 | 5.00 | 4,397.00 | 8,784.00 | 10.00 | 8,794.00 |

TABLE 2 (cont.)

| CAMPUS | RESIDENT | | | | | | NON-RESIDENT | | | | | |
|--------------------------|----------|-------|--------|----------|--------|----------|--------------|-------|----------|----------|--------|----------|
| | Semester | | | Annual | | | Semester | | | Annual | | |
| | Tuition | Fees | Total | Tuition | Fees | Total | Tuition | Fees | Total | Tuition | Fees | Total |
| UH COMMUNITY COLLEGES 8/ | | | | | | | | | | | | |
| Hawai'i | 672.00 | 67.00 | 739.00 | 1,344.00 | 134.00 | 1,478.00 | 2,988.00 | 67.00 | 3,055.00 | 5,976.00 | 134.00 | 6,110.00 |
| Honolulu | 672.00 | 15.00 | 687.00 | 1,344.00 | 30.00 | 1,374.00 | 2,988.00 | 15.00 | 3,003.00 | 5,976.00 | 30.00 | 6,006.00 |
| Kapi'olani | 672.00 | 30.00 | 702.00 | 1,344.00 | 60.00 | 1,404.00 | 2,988.00 | 30.00 | 3,018.00 | 5,976.00 | 60.00 | 6,036.00 |
| Kaua'i | 672.00 | 15.00 | 687.00 | 1,344.00 | 30.00 | 1,374.00 | 2,988.00 | 15.00 | 3,003.00 | 5,976.00 | 30.00 | 6,006.00 |
| Leeward | 672.00 | 12.50 | 684.50 | 1,344.00 | 25.00 | 1,369.00 | 2,988.00 | 12.50 | 3,000.50 | 5,976.00 | 25.00 | 6,001.00 |
| Maui | 672.00 | 19.00 | 691.00 | 1,344.00 | 38.00 | 1,382.00 | 3,372.00 | 19.00 | 3,391.00 | 6,744.00 | 38.00 | 6,782.00 |
| Windward | 672.00 | 20.00 | 692.00 | 1,344.00 | 40.00 | 1,384.00 | 2,988.00 | 20.00 | 3,008.00 | 5,976.00 | 40.00 | 6,016.00 |
| UHCC Average | 672.00 | 25.50 | 697.50 | 1,344.00 | 51.00 | 1,395.00 | 3,042.86 | 25.50 | 3,068.36 | 6,085.72 | 51.00 | 6,136.72 |

Note: Tuition and fees are subject to change.

1/ Unless a special tuition schedule applies, regular day tuition applies to any credit course offered throughout the year for which a General Fund appropriation is authorized.

2/ Effective AY 2006-07, undergraduate and graduate architecture students (resident and non-resident) pay an additional \$200 professional fee per semester throughout 7-year program.

3/ Effective AY 2006-07, undergraduate business students (resident and non-resident) pay an additional \$200 professional fee.

4/ Effective AY 2006-07, undergraduate nursing students (resident and non-resident) pay an additional \$1000 professional fee per semester for no more than six semesters while undergraduate dental hygiene students (resident and non-resident) pay an additional \$500 professional fee for no more than six semesters.

5/ CBA graduate tuition applies to current and future masters degrees offered by the UHM College of Business Administration, except the Master of Accountancy program. The CBA masters degrees offered in executive format charge the resident tuition established here plus additional fees delegated to and approved by the President.

6/ Fees include a \$7 per semester (\$14 per year) student health fee.

7/ Effective AY 2006-07, undergraduate nursing students (resident and non-resident) pay an additional \$500 professional fee per semester.

8/ UH community college tuition is charged on a per-credit basis for all enrolled credits. The amount shown here is based on 12 enrolled credits per semester, and is shown for comparative purposes only. The per-credit rate is \$56 per credit for residents for all seven campuses, and \$249 per credit for non-residents for all campuses except for Maui CC (charges \$281 per credit). Student fees vary at each campus, so a 12-credit average fee is used.

Source: Executive Memorandum No. 05-01, May 23, 2005; Office of the Dean of Student Services (UH Community College campuses, UH West O'ahu); Office of the Vice Chancellor for Student Affairs (UH Hilo); Admissions & Records and School of Law (UH Manoa).

TABLE 3
SEMESTER PART-TIME TUITION & FEES SCHEDULE (1-11 credits) 1/
UNIVERSITY OF HAWAII
AY 2006-07

| CAMPUS | RESIDENT | | | NON-RESIDENT | | |
|----------------------------------|----------|--------|----------|--------------|--------|----------|
| | Semester | | | Semester | | |
| | Tuition | Fees | Total | Tuition | Fees | Total |
| UH Manoa | | | | | | |
| Undergraduate | | | | | | |
| 1 credit..... | 180.00 | 93.80 | 273.80 | 508.00 | 93.80 | 601.80 |
| 2 credits..... | 360.00 | 94.10 | 454.10 | 1,016.00 | 94.10 | 1,110.10 |
| 3 credits..... | 540.00 | 94.40 | 634.40 | 1,524.00 | 94.40 | 1,618.40 |
| 4 credits..... | 720.00 | 94.70 | 814.70 | 2,032.00 | 94.70 | 2,126.70 |
| 5 credits..... | 900.00 | 95.00 | 995.00 | 2,540.00 | 95.00 | 2,635.00 |
| 6 credits..... | 1,080.00 | 95.30 | 1,175.30 | 3,048.00 | 95.30 | 3,143.30 |
| 7 credits..... | 1,260.00 | 95.60 | 1,355.60 | 3,556.00 | 95.60 | 3,651.60 |
| 8 credits..... | 1,440.00 | 95.90 | 1,535.90 | 4,064.00 | 95.90 | 4,159.90 |
| 9 credits..... | 1,620.00 | 96.20 | 1,716.20 | 4,572.00 | 96.20 | 4,668.20 |
| 10 credits..... | 1,800.00 | 96.20 | 1,896.20 | 5,080.00 | 96.20 | 5,176.20 |
| 11 credits..... | 1,980.00 | 96.20 | 2,076.20 | 5,588.00 | 96.20 | 5,684.20 |
| Graduate | | | | | | |
| 1 credit..... | 243.00 | 108.80 | 351.80 | 571.00 | 108.80 | 679.80 |
| 2 credits..... | 486.00 | 109.10 | 595.10 | 1,142.00 | 109.10 | 1,251.10 |
| 3 credits..... | 729.00 | 109.40 | 838.40 | 1,713.00 | 109.40 | 1,822.40 |
| 4 credits..... | 972.00 | 109.70 | 1,081.70 | 2,284.00 | 109.70 | 2,393.70 |
| 5 credits..... | 1,215.00 | 110.00 | 1,325.00 | 2,855.00 | 110.00 | 2,965.00 |
| 6 credits..... | 1,458.00 | 110.30 | 1,568.30 | 3,426.00 | 110.30 | 3,536.30 |
| 7 credits..... | 1,701.00 | 110.60 | 1,811.60 | 3,997.00 | 110.60 | 4,107.60 |
| 8 credits..... | 1,944.00 | 110.90 | 2,054.90 | 4,568.00 | 110.90 | 4,678.90 |
| 9 credits..... | 2,187.00 | 111.20 | 2,298.20 | 5,139.00 | 111.20 | 5,250.20 |
| 10 credits..... | 2,430.00 | 111.20 | 2,541.20 | 5,710.00 | 111.20 | 5,821.20 |
| 11 credits..... | 2,673.00 | 111.20 | 2,784.20 | 6,281.00 | 111.20 | 6,392.20 |
| Undergrad-Architecture 2/ | | | | | | |
| 1 credit..... | 180.00 | 293.80 | 473.80 | 508.00 | 293.80 | 801.80 |
| 2 credits..... | 360.00 | 294.10 | 654.10 | 1,016.00 | 294.10 | 1,310.10 |
| 3 credits..... | 540.00 | 294.40 | 834.40 | 1,524.00 | 294.40 | 1,818.40 |
| 4 credits..... | 720.00 | 294.70 | 1,014.70 | 2,032.00 | 294.70 | 2,326.70 |
| 5 credits..... | 900.00 | 295.00 | 1,195.00 | 2,540.00 | 295.00 | 2,835.00 |
| 6 credits..... | 1,080.00 | 295.30 | 1,375.30 | 3,048.00 | 295.30 | 3,343.30 |
| 7 credits..... | 1,260.00 | 295.60 | 1,555.60 | 3,556.00 | 295.60 | 3,851.60 |
| 8 credits..... | 1,440.00 | 295.90 | 1,735.90 | 4,064.00 | 295.90 | 4,359.90 |
| 9 credits..... | 1,620.00 | 296.20 | 1,916.20 | 4,572.00 | 296.20 | 4,868.20 |
| 10 credits..... | 1,800.00 | 296.20 | 2,096.20 | 5,080.00 | 296.20 | 5,376.20 |
| 11 credits..... | 1,980.00 | 296.20 | 2,276.20 | 5,588.00 | 296.20 | 5,884.20 |
| Undergrad-Business 3/ | | | | | | |
| 1 credit..... | 180.00 | 293.80 | 473.80 | 508.00 | 293.80 | 801.80 |
| 2 credits..... | 360.00 | 294.10 | 654.10 | 1,016.00 | 294.10 | 1,310.10 |
| 3 credits..... | 540.00 | 294.40 | 834.40 | 1,524.00 | 294.40 | 1,818.40 |
| 4 credits..... | 720.00 | 294.70 | 1,014.70 | 2,032.00 | 294.70 | 2,326.70 |
| 5 credits..... | 900.00 | 295.00 | 1,195.00 | 2,540.00 | 295.00 | 2,835.00 |
| 6 credits..... | 1,080.00 | 295.30 | 1,375.30 | 3,048.00 | 295.30 | 3,343.30 |
| 7 credits..... | 1,260.00 | 295.60 | 1,555.60 | 3,556.00 | 295.60 | 3,851.60 |
| 8 credits..... | 1,440.00 | 295.90 | 1,735.90 | 4,064.00 | 295.90 | 4,359.90 |
| 9 credits..... | 1,620.00 | 296.20 | 1,916.20 | 4,572.00 | 296.20 | 4,868.20 |
| 10 credits..... | 1,800.00 | 296.20 | 2,096.20 | 5,080.00 | 296.20 | 5,376.20 |
| 11 credits..... | 1,980.00 | 296.20 | 2,276.20 | 5,588.00 | 296.20 | 5,884.20 |

TABLE 3 (cont.)

| CAMPUS | RESIDENT | | | NON-RESIDENT | | |
|------------------------------------|----------|----------|----------|--------------|----------|----------|
| | Semester | | | Semester | | |
| | Tuition | Fees | Total | Tuition | Fees | Total |
| Undergrad-Dental Hygiene 4/ | | | | | | |
| 1 credit..... | 180.00 | 593.80 | 773.80 | 508.00 | 593.80 | 1,101.80 |
| 2 credits..... | 360.00 | 594.10 | 954.10 | 1,016.00 | 594.10 | 1,610.10 |
| 3 credits..... | 540.00 | 594.40 | 1,134.40 | 1,524.00 | 594.40 | 2,118.40 |
| 4 credits..... | 720.00 | 594.70 | 1,314.70 | 2,032.00 | 594.70 | 2,626.70 |
| 5 credits..... | 900.00 | 595.00 | 1,495.00 | 2,540.00 | 595.00 | 3,135.00 |
| 6 credits..... | 1,080.00 | 595.30 | 1,675.30 | 3,048.00 | 595.30 | 3,643.30 |
| 7 credits..... | 1,260.00 | 595.60 | 1,855.60 | 3,556.00 | 595.60 | 4,151.60 |
| 8 credits..... | 1,440.00 | 595.90 | 2,035.90 | 4,064.00 | 595.90 | 4,659.90 |
| 9 credits..... | 1,620.00 | 596.20 | 2,216.20 | 4,572.00 | 596.20 | 5,168.20 |
| 10 credits..... | 1,800.00 | 596.20 | 2,396.20 | 5,080.00 | 596.20 | 5,676.20 |
| 11 credits..... | 1,980.00 | 596.20 | 2,576.20 | 5,588.00 | 596.20 | 6,184.20 |
| Undergrad-Nursing 4/ | | | | | | |
| 1 credit..... | 180.00 | 1,093.80 | 1,273.80 | 508.00 | 1,093.80 | 1,601.80 |
| 2 credits..... | 360.00 | 1,094.10 | 1,454.10 | 1,016.00 | 1,094.10 | 2,110.10 |
| 3 credits..... | 540.00 | 1,094.40 | 1,634.40 | 1,524.00 | 1,094.40 | 2,618.40 |
| 4 credits..... | 720.00 | 1,094.70 | 1,814.70 | 2,032.00 | 1,094.70 | 3,126.70 |
| 5 credits..... | 900.00 | 1,095.00 | 1,995.00 | 2,540.00 | 1,095.00 | 3,635.00 |
| 6 credits..... | 1,080.00 | 1,095.30 | 2,175.30 | 3,048.00 | 1,095.30 | 4,143.30 |
| 7 credits..... | 1,260.00 | 1,095.60 | 2,355.60 | 3,556.00 | 1,095.60 | 4,651.60 |
| 8 credits..... | 1,440.00 | 1,095.90 | 2,535.90 | 4,064.00 | 1,095.90 | 5,159.90 |
| 9 credits..... | 1,620.00 | 1,096.20 | 2,716.20 | 4,572.00 | 1,096.20 | 5,668.20 |
| 10 credits..... | 1,800.00 | 1,096.20 | 2,896.20 | 5,080.00 | 1,096.20 | 6,176.20 |
| 11 credits..... | 1,980.00 | 1,096.20 | 3,076.20 | 5,588.00 | 1,096.20 | 6,684.20 |
| Graduate-Architecture 2/ | | | | | | |
| 1 credit..... | 243.00 | 308.80 | 551.80 | 571.00 | 308.80 | 879.80 |
| 2 credits..... | 486.00 | 309.10 | 795.10 | 1,142.00 | 309.10 | 1,451.10 |
| 3 credits..... | 729.00 | 309.40 | 1,038.40 | 1,713.00 | 309.40 | 2,022.40 |
| 4 credits..... | 972.00 | 309.70 | 1,281.70 | 2,284.00 | 309.70 | 2,593.70 |
| 5 credits..... | 1,215.00 | 310.00 | 1,525.00 | 2,855.00 | 310.00 | 3,165.00 |
| 6 credits..... | 1,458.00 | 310.30 | 1,768.30 | 3,426.00 | 310.30 | 3,736.30 |
| 7 credits..... | 1,701.00 | 310.60 | 2,011.60 | 3,997.00 | 310.60 | 4,307.60 |
| 8 credits..... | 1,944.00 | 310.90 | 2,254.90 | 4,568.00 | 310.90 | 4,878.90 |
| 9 credits..... | 2,187.00 | 311.20 | 2,498.20 | 5,139.00 | 311.20 | 5,450.20 |
| 10 credits..... | 2,430.00 | 311.20 | 2,741.20 | 5,710.00 | 311.20 | 6,021.20 |
| 11 credits..... | 2,673.00 | 311.20 | 2,984.20 | 6,281.00 | 311.20 | 6,592.20 |
| Graduate-Nursing | | | | | | |
| 1 credit..... | 385.00 | 108.80 | 493.80 | 707.00 | 108.80 | 815.80 |
| 2 credits..... | 770.00 | 109.10 | 879.10 | 1,414.00 | 109.10 | 1,523.10 |
| 3 credits..... | 1,155.00 | 109.40 | 1,264.40 | 2,121.00 | 109.40 | 2,230.40 |
| 4 credits..... | 1,540.00 | 109.70 | 1,649.70 | 2,828.00 | 109.70 | 2,937.70 |
| 5 credits..... | 1,925.00 | 110.00 | 2,035.00 | 3,535.00 | 110.00 | 3,645.00 |
| 6 credits..... | 2,310.00 | 110.30 | 2,420.30 | 4,242.00 | 110.30 | 4,352.30 |
| 7 credits..... | 2,695.00 | 110.60 | 2,805.60 | 4,949.00 | 110.60 | 5,059.60 |
| 8 credits..... | 3,080.00 | 110.90 | 3,190.90 | 5,656.00 | 110.90 | 5,766.90 |
| 9 credits..... | 3,465.00 | 111.20 | 3,576.20 | 6,363.00 | 111.20 | 6,474.20 |
| 10 credits..... | 3,850.00 | 111.20 | 3,961.20 | 7,070.00 | 111.20 | 7,181.20 |
| 11 credits..... | 4,235.00 | 111.20 | 4,346.20 | 7,777.00 | 111.20 | 7,888.20 |
| Graduate-CBA Masters 5/ | | | | | | |
| 1 credit..... | 454.00 | 108.80 | 562.80 | 678.00 | 108.80 | 786.80 |
| 2 credits..... | 908.00 | 109.10 | 1,017.10 | 1,356.00 | 109.10 | 1,465.10 |
| 3 credits..... | 1,362.00 | 109.40 | 1,471.40 | 2,034.00 | 109.40 | 2,143.40 |
| 4 credits..... | 1,816.00 | 109.70 | 1,925.70 | 2,712.00 | 109.70 | 2,821.70 |

TABLE 3 (cont.)

| CAMPUS | RESIDENT | | | NON-RESIDENT | | |
|--------------------------|-----------|--------|-----------|--------------|--------|-----------|
| | Semester | | | Semester | | |
| | Tuition | Fees | Total | Tuition | Fees | Total |
| 5 credits..... | 2,270.00 | 110.00 | 2,380.00 | 3,390.00 | 110.00 | 3,500.00 |
| 6 credits..... | 2,724.00 | 110.30 | 2,834.30 | 4,068.00 | 110.30 | 4,178.30 |
| 7 credits..... | 3,178.00 | 110.60 | 3,288.60 | 4,746.00 | 110.60 | 4,856.60 |
| 8 credits..... | 3,632.00 | 110.90 | 3,742.90 | 5,424.00 | 110.90 | 5,534.90 |
| 9 credits..... | 4,086.00 | 111.20 | 4,197.20 | 6,102.00 | 111.20 | 6,213.20 |
| 10 credits..... | 4,540.00 | 111.20 | 4,651.20 | 6,780.00 | 111.20 | 6,891.20 |
| 11 credits..... | 4,994.00 | 111.20 | 5,105.20 | 7,458.00 | 111.20 | 7,569.20 |
| Graduate-CBA MAcc | | | | | | |
| 1 credit..... | 412.00 | 108.80 | 520.80 | 647.00 | 108.80 | 755.80 |
| 2 credits..... | 824.00 | 109.10 | 933.10 | 1,294.00 | 109.10 | 1,403.10 |
| 3 credits..... | 1,236.00 | 109.40 | 1,345.40 | 1,941.00 | 109.40 | 2,050.40 |
| 4 credits..... | 1,648.00 | 109.70 | 1,757.70 | 2,588.00 | 109.70 | 2,697.70 |
| 5 credits..... | 2,060.00 | 110.00 | 2,170.00 | 3,235.00 | 110.00 | 3,345.00 |
| 6 credits..... | 2,472.00 | 110.30 | 2,582.30 | 3,882.00 | 110.30 | 3,992.30 |
| 7 credits..... | 2,884.00 | 110.60 | 2,994.60 | 4,529.00 | 110.60 | 4,639.60 |
| 8 credits..... | 3,296.00 | 110.90 | 3,406.90 | 5,176.00 | 110.90 | 5,286.90 |
| 9 credits..... | 3,708.00 | 111.20 | 3,819.20 | 5,823.00 | 111.20 | 5,934.20 |
| 10 credits..... | 4,120.00 | 111.20 | 4,231.20 | 6,470.00 | 111.20 | 6,581.20 |
| 11 credits..... | 4,532.00 | 111.20 | 4,643.20 | 7,117.00 | 111.20 | 7,228.20 |
| Law - JD | | | | | | |
| 1 credit..... | 537.00 | 93.80 | 630.80 | 943.00 | 93.80 | 1,036.80 |
| 2 credits..... | 1,074.00 | 94.10 | 1,168.10 | 1,886.00 | 94.10 | 1,980.10 |
| 3 credits..... | 1,611.00 | 94.40 | 1,705.40 | 2,829.00 | 94.40 | 2,923.40 |
| 4 credits..... | 2,148.00 | 94.70 | 2,242.70 | 3,772.00 | 94.70 | 3,866.70 |
| 5 credits..... | 2,685.00 | 95.00 | 2,780.00 | 4,715.00 | 95.00 | 4,810.00 |
| 6 credits..... | 3,222.00 | 95.30 | 3,317.30 | 5,658.00 | 95.30 | 5,753.30 |
| 7 credits..... | 3,759.00 | 95.60 | 3,854.60 | 6,601.00 | 95.60 | 6,696.60 |
| 8 credits..... | 4,296.00 | 95.90 | 4,391.90 | 7,544.00 | 95.90 | 7,639.90 |
| 9 credits..... | 4,833.00 | 96.20 | 4,929.20 | 8,487.00 | 96.20 | 8,583.20 |
| 10 credits..... | 5,370.00 | 96.20 | 5,466.20 | 9,430.00 | 96.20 | 9,526.20 |
| 11 credits..... | 5,907.00 | 96.20 | 6,003.20 | 10,373.00 | 96.20 | 10,469.20 |
| Law - LLM | | | | | | |
| 1 credit..... | 993.00 | 93.80 | 1,086.80 | 993.00 | 93.80 | 1,086.80 |
| 2 credits..... | 1,986.00 | 94.10 | 2,080.10 | 1,986.00 | 94.10 | 2,080.10 |
| 3 credits..... | 2,979.00 | 94.40 | 3,073.40 | 2,979.00 | 94.40 | 3,073.40 |
| 4 credits..... | 3,972.00 | 94.70 | 4,066.70 | 3,972.00 | 94.70 | 4,066.70 |
| 5 credits..... | 4,965.00 | 95.00 | 5,060.00 | 4,965.00 | 95.00 | 5,060.00 |
| 6 credits..... | 5,958.00 | 95.30 | 6,053.30 | 5,958.00 | 95.30 | 6,053.30 |
| 7 credits..... | 6,951.00 | 95.60 | 7,046.60 | 6,951.00 | 95.60 | 7,046.60 |
| 8 credits..... | 7,944.00 | 95.90 | 8,039.90 | 7,944.00 | 95.90 | 8,039.90 |
| 9 credits..... | 8,937.00 | 96.20 | 9,033.20 | 8,937.00 | 96.20 | 9,033.20 |
| 10 credits..... | 9,930.00 | 96.20 | 10,026.20 | 9,930.00 | 96.20 | 10,026.20 |
| 11 credits..... | 10,923.00 | 96.20 | 11,019.20 | 10,923.00 | 96.20 | 11,019.20 |
| Medicine | | | | | | |
| 1 credit..... | 761.00 | 93.80 | 854.80 | 1,461.00 | 93.80 | 1,554.80 |
| 2 credits..... | 1,522.00 | 94.10 | 1,616.10 | 2,922.00 | 94.10 | 3,016.10 |
| 3 credits..... | 2,283.00 | 94.40 | 2,377.40 | 4,383.00 | 94.40 | 4,477.40 |
| 4 credits..... | 3,044.00 | 94.70 | 3,138.70 | 5,844.00 | 94.70 | 5,938.70 |
| 5 credits..... | 3,805.00 | 95.00 | 3,900.00 | 7,305.00 | 95.00 | 7,400.00 |
| 6 credits..... | 4,566.00 | 95.30 | 4,661.30 | 8,766.00 | 95.30 | 8,861.30 |
| 7 credits..... | 5,327.00 | 95.60 | 5,422.60 | 10,227.00 | 95.60 | 10,322.60 |
| 8 credits..... | 6,088.00 | 95.90 | 6,183.90 | 11,688.00 | 95.90 | 11,783.90 |
| 9 credits..... | 6,849.00 | 96.20 | 6,945.20 | 13,149.00 | 96.20 | 13,245.20 |
| 10 credits..... | 7,610.00 | 96.20 | 7,706.20 | 14,610.00 | 96.20 | 14,706.20 |

TABLE 3 (cont.)

| CAMPUS | RESIDENT | | | NON-RESIDENT | | |
|---------------------------------|----------|--------|----------|--------------|--------|-----------|
| | Semester | | | Semester | | |
| | Tuition | Fees | Total | Tuition | Fees | Total |
| 11 credits..... | 8,371.00 | 96.20 | 8,467.20 | 16,071.00 | 96.20 | 16,167.20 |
| UH Hilo 6/ | | | | | | |
| Undergraduate | | | | | | |
| 1 credit..... | 125.00 | 40.50 | 165.50 | 398.00 | 40.50 | 438.50 |
| 2 credits..... | 250.00 | 40.50 | 290.50 | 796.00 | 40.50 | 836.50 |
| 3 credits..... | 375.00 | 40.50 | 415.50 | 1,194.00 | 40.50 | 1,234.50 |
| 4 credits..... | 500.00 | 40.50 | 540.50 | 1,592.00 | 40.50 | 1,632.50 |
| 5 credits..... | 625.00 | 74.00 | 699.00 | 1,990.00 | 74.00 | 2,064.00 |
| 6 credits..... | 750.00 | 74.00 | 824.00 | 2,388.00 | 74.00 | 2,462.00 |
| 7 credits..... | 875.00 | 74.00 | 949.00 | 2,786.00 | 74.00 | 2,860.00 |
| 8 credits..... | 1,000.00 | 74.00 | 1,074.00 | 3,184.00 | 74.00 | 3,258.00 |
| 9 credits..... | 1,125.00 | 74.00 | 1,199.00 | 3,582.00 | 74.00 | 3,656.00 |
| 10 credits..... | 1,250.00 | 74.00 | 1,324.00 | 3,980.00 | 74.00 | 4,054.00 |
| 11 credits..... | 1,375.00 | 74.00 | 1,449.00 | 4,378.00 | 74.00 | 4,452.00 |
| Undergraduate-Nursing 7/ | | | | | | |
| 1 credit..... | 125.00 | 540.50 | 665.50 | 398.00 | 540.50 | 938.50 |
| 2 credits..... | 250.00 | 540.50 | 790.50 | 796.00 | 540.50 | 1,336.50 |
| 3 credits..... | 375.00 | 540.50 | 915.50 | 1,194.00 | 540.50 | 1,734.50 |
| 4 credits..... | 500.00 | 540.50 | 1,040.50 | 1,592.00 | 540.50 | 2,132.50 |
| 5 credits..... | 625.00 | 574.00 | 1,199.00 | 1,990.00 | 574.00 | 2,564.00 |
| 6 credits..... | 750.00 | 574.00 | 1,324.00 | 2,388.00 | 574.00 | 2,962.00 |
| 7 credits..... | 875.00 | 574.00 | 1,449.00 | 2,786.00 | 574.00 | 3,360.00 |
| 8 credits..... | 1,000.00 | 574.00 | 1,574.00 | 3,184.00 | 574.00 | 3,758.00 |
| 9 credits..... | 1,125.00 | 574.00 | 1,699.00 | 3,582.00 | 574.00 | 4,156.00 |
| 10 credits..... | 1,250.00 | 574.00 | 1,824.00 | 3,980.00 | 574.00 | 4,554.00 |
| 11 credits..... | 1,375.00 | 574.00 | 1,949.00 | 4,378.00 | 574.00 | 4,952.00 |
| Graduate | | | | | | |
| 1 credit..... | 208.00 | 40.50 | 248.50 | 480.00 | 40.50 | 520.50 |
| 2 credits..... | 416.00 | 40.50 | 456.50 | 960.00 | 40.50 | 1,000.50 |
| 3 credits..... | 624.00 | 40.50 | 664.50 | 1,440.00 | 40.50 | 1,480.50 |
| 4 credits..... | 832.00 | 40.50 | 872.50 | 1,920.00 | 40.50 | 1,960.50 |
| 5 credits..... | 1,040.00 | 74.00 | 1,114.00 | 2,400.00 | 74.00 | 2,474.00 |
| 6 credits..... | 1,248.00 | 74.00 | 1,322.00 | 2,880.00 | 74.00 | 2,954.00 |
| 7 credits..... | 1,456.00 | 74.00 | 1,530.00 | 3,360.00 | 74.00 | 3,434.00 |
| 8 credits..... | 1,664.00 | 74.00 | 1,738.00 | 3,840.00 | 74.00 | 3,914.00 |
| 9 credits..... | 1,872.00 | 74.00 | 1,946.00 | 4,320.00 | 74.00 | 4,394.00 |
| 10 credits..... | 2,080.00 | 74.00 | 2,154.00 | 4,800.00 | 74.00 | 4,874.00 |
| 11 credits..... | 2,288.00 | 74.00 | 2,362.00 | 5,280.00 | 74.00 | 5,354.00 |
| UH West O'ahu | | | | | | |
| 1 credit..... | 114.00 | 5.00 | 119.00 | 366.00 | 5.00 | 371.00 |
| 2 credits..... | 228.00 | 5.00 | 233.00 | 732.00 | 5.00 | 737.00 |
| 3 credits..... | 342.00 | 5.00 | 347.00 | 1,098.00 | 5.00 | 1,103.00 |
| 4 credits..... | 456.00 | 5.00 | 461.00 | 1,464.00 | 5.00 | 1,469.00 |
| 5 credits..... | 570.00 | 5.00 | 575.00 | 1,830.00 | 5.00 | 1,835.00 |
| 6 credits..... | 684.00 | 5.00 | 689.00 | 2,196.00 | 5.00 | 2,201.00 |
| 7 credits..... | 798.00 | 5.00 | 803.00 | 2,562.00 | 5.00 | 2,567.00 |
| 8 credits..... | 912.00 | 5.00 | 917.00 | 2,928.00 | 5.00 | 2,933.00 |
| 9 credits..... | 1,026.00 | 5.00 | 1,031.00 | 3,294.00 | 5.00 | 3,299.00 |
| 10 credits..... | 1,140.00 | 5.00 | 1,145.00 | 3,660.00 | 5.00 | 3,665.00 |
| 11 credits..... | 1,254.00 | 5.00 | 1,259.00 | 4,026.00 | 5.00 | 4,031.00 |

TABLE 3 (cont.)

| CAMPUS | RESIDENT | | | NON-RESIDENT | | |
|--------------------------|----------|-------|--------|--------------|-------|----------|
| | Semester | | | Semester | | |
| | Tuition | Fees | Total | Tuition | Fees | Total |
| UH Community Colleges 8/ | | | | | | |
| Hawai'i | | | | | | |
| 1 credit..... | 56.00 | 33.50 | 89.50 | 249.00 | 33.50 | 282.50 |
| 2 credits..... | 112.00 | 33.50 | 145.50 | 498.00 | 33.50 | 531.50 |
| 3 credits..... | 168.00 | 33.50 | 201.50 | 747.00 | 33.50 | 780.50 |
| 4 credits..... | 224.00 | 33.50 | 257.50 | 996.00 | 33.50 | 1,029.50 |
| 5 credits..... | 280.00 | 67.00 | 347.00 | 1,245.00 | 67.00 | 1,312.00 |
| 6 credits..... | 336.00 | 67.00 | 403.00 | 1,494.00 | 67.00 | 1,561.00 |
| 7 credits..... | 392.00 | 67.00 | 459.00 | 1,743.00 | 67.00 | 1,810.00 |
| 8 credits..... | 448.00 | 67.00 | 515.00 | 1,992.00 | 67.00 | 2,059.00 |
| 9 credits..... | 504.00 | 67.00 | 571.00 | 2,241.00 | 67.00 | 2,308.00 |
| 10 credits..... | 560.00 | 67.00 | 627.00 | 2,490.00 | 67.00 | 2,557.00 |
| 11 credits..... | 616.00 | 67.00 | 683.00 | 2,739.00 | 67.00 | 2,806.00 |
| Honolulu | | | | | | |
| 1 credit..... | 56.00 | 10.50 | 66.50 | 249.00 | 10.50 | 259.50 |
| 2 credits..... | 112.00 | 11.00 | 123.00 | 498.00 | 11.00 | 509.00 |
| 3 credits..... | 168.00 | 11.50 | 179.50 | 747.00 | 11.50 | 758.50 |
| 4 credits..... | 224.00 | 12.00 | 236.00 | 996.00 | 12.00 | 1,008.00 |
| 5 credits..... | 280.00 | 12.50 | 292.50 | 1,245.00 | 12.50 | 1,257.50 |
| 6 credits..... | 336.00 | 13.00 | 349.00 | 1,494.00 | 13.00 | 1,507.00 |
| 7 credits..... | 392.00 | 13.50 | 405.50 | 1,743.00 | 13.50 | 1,756.50 |
| 8 credits..... | 448.00 | 14.00 | 462.00 | 1,992.00 | 14.00 | 2,006.00 |
| 9 credits..... | 504.00 | 14.50 | 518.50 | 2,241.00 | 14.50 | 2,255.50 |
| 10 credits..... | 560.00 | 15.00 | 575.00 | 2,490.00 | 15.00 | 2,505.00 |
| 11 credits..... | 616.00 | 15.00 | 631.00 | 2,739.00 | 15.00 | 2,754.00 |
| Kapi'olani | | | | | | |
| 1 credit..... | 56.00 | 12.00 | 68.00 | 249.00 | 12.00 | 261.00 |
| 2 credits..... | 112.00 | 14.00 | 126.00 | 498.00 | 14.00 | 512.00 |
| 3 credits..... | 168.00 | 16.00 | 184.00 | 747.00 | 16.00 | 763.00 |
| 4 credits..... | 224.00 | 18.00 | 242.00 | 996.00 | 18.00 | 1,014.00 |
| 5 credits..... | 280.00 | 20.00 | 300.00 | 1,245.00 | 20.00 | 1,265.00 |
| 6 credits..... | 336.00 | 22.00 | 358.00 | 1,494.00 | 22.00 | 1,516.00 |
| 7 credits..... | 392.00 | 24.00 | 416.00 | 1,743.00 | 24.00 | 1,767.00 |
| 8 credits..... | 448.00 | 26.00 | 474.00 | 1,992.00 | 26.00 | 2,018.00 |
| 9 credits..... | 504.00 | 28.00 | 532.00 | 2,241.00 | 28.00 | 2,269.00 |
| 10 credits..... | 560.00 | 30.00 | 590.00 | 2,490.00 | 30.00 | 2,520.00 |
| 11 credits..... | 616.00 | 30.00 | 646.00 | 2,739.00 | 30.00 | 2,769.00 |
| Kauai 9/ | | | | | | |
| 1 credit..... | 56.00 | 1.25 | 57.25 | 249.00 | 1.25 | 250.25 |
| 2 credits..... | 112.00 | 2.50 | 114.50 | 498.00 | 2.50 | 500.50 |
| 3 credits..... | 168.00 | 3.75 | 171.75 | 747.00 | 3.75 | 750.75 |
| 4 credits..... | 224.00 | 5.00 | 229.00 | 996.00 | 5.00 | 1,001.00 |
| 5 credits..... | 280.00 | 6.25 | 286.25 | 1,245.00 | 6.25 | 1,251.25 |
| 6 credits..... | 336.00 | 7.50 | 343.50 | 1,494.00 | 7.50 | 1,501.50 |
| 7 credits..... | 392.00 | 8.75 | 400.75 | 1,743.00 | 8.75 | 1,751.75 |
| 8 credits..... | 448.00 | 10.00 | 458.00 | 1,992.00 | 10.00 | 2,002.00 |
| 9 credits..... | 504.00 | 11.25 | 515.25 | 2,241.00 | 11.25 | 2,252.25 |
| 10 credits..... | 560.00 | 12.50 | 572.50 | 2,490.00 | 12.50 | 2,502.50 |
| 11 credits..... | 616.00 | 13.75 | 629.75 | 2,739.00 | 13.75 | 2,752.75 |
| Leeward | | | | | | |
| 1 credit..... | 56.00 | 8.00 | 64.00 | 249.00 | 8.00 | 257.00 |
| 2 credits..... | 112.00 | 8.50 | 120.50 | 498.00 | 8.50 | 506.50 |
| 3 credits..... | 168.00 | 9.00 | 177.00 | 747.00 | 9.00 | 756.00 |

TABLE 3 (cont.)

| CAMPUS | RESIDENT | | | NON-RESIDENT | | |
|---------------------|----------|-------|--------|--------------|-------|----------|
| | Semester | | | Semester | | |
| | Tuition | Fees | Total | Tuition | Fees | Total |
| 4 credits..... | 224.00 | 9.50 | 233.50 | 996.00 | 9.50 | 1,005.50 |
| 5 credits..... | 280.00 | 10.00 | 290.00 | 1,245.00 | 10.00 | 1,255.00 |
| 6 credits..... | 336.00 | 10.50 | 346.50 | 1,494.00 | 10.50 | 1,504.50 |
| 7 credits..... | 392.00 | 11.00 | 403.00 | 1,743.00 | 11.00 | 1,754.00 |
| 8 credits..... | 448.00 | 11.50 | 459.50 | 1,992.00 | 11.50 | 2,003.50 |
| 9 credits..... | 504.00 | 12.00 | 516.00 | 2,241.00 | 12.00 | 2,253.00 |
| 10 credits..... | 560.00 | 12.50 | 572.50 | 2,490.00 | 12.50 | 2,502.50 |
| 11 credits..... | 616.00 | 12.50 | 628.50 | 2,739.00 | 12.50 | 2,751.50 |
| Maui | | | | | | |
| 1 credit..... | 56.00 | 6.00 | 62.00 | 281.00 | 6.00 | 287.00 |
| 2 credits..... | 112.00 | 8.00 | 120.00 | 498.00 | 8.00 | 506.00 |
| 3 credits..... | 168.00 | 10.00 | 178.00 | 747.00 | 10.00 | 757.00 |
| 4 credits..... | 224.00 | 12.00 | 236.00 | 996.00 | 12.00 | 1,008.00 |
| 5 credits..... | 280.00 | 14.00 | 294.00 | 1,245.00 | 14.00 | 1,259.00 |
| 6 credits..... | 336.00 | 16.00 | 352.00 | 1,494.00 | 16.00 | 1,510.00 |
| 7 credits..... | 392.00 | 18.00 | 410.00 | 1,743.00 | 18.00 | 1,761.00 |
| 8 credits..... | 448.00 | 19.00 | 467.00 | 1,992.00 | 19.00 | 2,011.00 |
| 9 credits..... | 504.00 | 19.00 | 523.00 | 2,241.00 | 19.00 | 2,260.00 |
| 10 credits..... | 560.00 | 19.00 | 579.00 | 2,490.00 | 19.00 | 2,509.00 |
| 11 credits..... | 616.00 | 19.00 | 635.00 | 2,739.00 | 19.00 | 2,758.00 |
| Windward | | | | | | |
| 1 credit..... | 56.00 | 2.00 | 58.00 | 249.00 | 2.00 | 251.00 |
| 2 credits..... | 112.00 | 4.00 | 116.00 | 498.00 | 4.00 | 502.00 |
| 3 credits..... | 168.00 | 6.00 | 174.00 | 747.00 | 6.00 | 753.00 |
| 4 credits..... | 224.00 | 8.00 | 232.00 | 996.00 | 8.00 | 1,004.00 |
| 5 credits..... | 280.00 | 10.00 | 290.00 | 1,245.00 | 10.00 | 1,255.00 |
| 6 credits..... | 336.00 | 12.00 | 348.00 | 1,494.00 | 12.00 | 1,506.00 |
| 7 credits..... | 392.00 | 14.00 | 406.00 | 1,743.00 | 14.00 | 1,757.00 |
| 8 credits..... | 448.00 | 16.00 | 464.00 | 1,992.00 | 16.00 | 2,008.00 |
| 9 credits..... | 504.00 | 18.00 | 522.00 | 2,241.00 | 18.00 | 2,259.00 |
| 10 credits..... | 560.00 | 20.00 | 580.00 | 2,490.00 | 20.00 | 2,510.00 |
| 11 credits..... | 616.00 | 20.00 | 636.00 | 2,739.00 | 20.00 | 2,759.00 |
| UHCC Average | | | | | | |
| 1 credit..... | 56.00 | 10.46 | 66.46 | 253.57 | 10.46 | 264.04 |
| 2 credits..... | 112.00 | 11.64 | 123.64 | 498.00 | 11.64 | 509.64 |
| 3 credits..... | 168.00 | 12.82 | 180.82 | 747.00 | 12.82 | 759.82 |
| 4 credits..... | 224.00 | 14.00 | 238.00 | 996.00 | 14.00 | 1,010.00 |
| 5 credits..... | 280.00 | 19.96 | 299.96 | 1,245.00 | 19.96 | 1,264.96 |
| 6 credits..... | 336.00 | 21.14 | 357.14 | 1,494.00 | 21.14 | 1,515.14 |
| 7 credits..... | 392.00 | 22.32 | 414.32 | 1,743.00 | 22.32 | 1,765.32 |
| 8 credits..... | 448.00 | 23.36 | 471.36 | 1,992.00 | 23.36 | 2,015.36 |
| 9 credits..... | 504.00 | 24.25 | 528.25 | 2,241.00 | 24.25 | 2,265.25 |
| 10 credits..... | 560.00 | 25.14 | 585.14 | 2,490.00 | 25.14 | 2,515.14 |
| 11 credits..... | 616.00 | 25.32 | 641.32 | 2,739.00 | 25.32 | 2,764.32 |

Note: Tuition and fees are subject to change.

1/ Unless a special tuition schedule applies, regular day tuition applies to any credit course offered throughout the year for which a General Fund appropriation is authorized.

2/ Effective AY 2006-07, undergraduate and graduate architecture students (resident and non-resident) pay a \$200 professional fee per semester throughout 7-year program.

3/ Effective AY 2006-07, undergraduate business students (resident and non-resident) pay an additional \$200 professional fee.

TABLE 3 (cont.)

| CAMPUS | RESIDENT | | | NON-RESIDENT | | |
|--------|----------|------|-------|--------------|------|-------|
| | Semester | | | Semester | | |
| | Tuition | Fees | Total | Tuition | Fees | Total |

4/ From AY 1999-00 through 2005-06, undergraduate resident and non-resident nursing and dental hygiene students at UHM enrolled in clinical courses in the regular program and through distance learning pay a \$500 per semester professional fee for no more than six semesters. Effective AY 2006-07, undergraduate nursing students pay a \$1000 professional fee per semester for no more than six semesters, while undergraduate dental hygiene students continue to pay a \$500 professional fee for no more than six semesters.

5/ CBA graduate tuition applies to current and future masters degrees offered by the UHM College of Business Administration, except the Master of Accountancy program. The CBA masters degrees offered in executive format charge the resident tuition established here plus additional fees delegated to and approved by the President.

6/ Fees include a \$7 per semester (\$14 per year) student health fee.

7/ Effective AY 2006-07, UHH undergraduate nursing students (resident and non-resident) pay an additional \$500 professional fee per semester.

8/ UH community college tuition is charged on a per-credit basis for all enrolled credits. Figures in this table show up to 11 credits. However, students are allowed to register for additional credits and pay the additional per-credit tuition charges.

9/ Kaua'i Community College charges student fees of \$1.25 per semester hour up to \$15.00.

Source: Executive Memorandum No. 05-01, May 23, 2005; Office of the Dean of Student Services (UH Community College campuses and UH West O'ahu); Office of the Vice Chancellor for Student Affairs (UH Hilo); Schedule of Classes (UH Manoa).

TABLE 4
 PER-CREDIT-HOUR AND FULL-TIME SEMESTER TUITION SCHEDULE 1/
 UNIVERSITY OF HAWAII
 AY 2006-2007 THROUGH 2011-2012 2/
 (Subject to Change, Excludes Fees)

| CAMPUS | ACADEMIC YEAR | | | | | | | | | | | | | | | | | | | | | | | |
|---------------------------------|---------------|--------|--------------|--------|-----------|--------|--------------|--------|-------------|--------|--------------|--------|-------------|--------|--------------|--------|-------------|--------|--------------|--------|-------------|--------|--------------|--------|
| | 2006-2007 | | | | 2007-2008 | | | | 2008 - 2009 | | | | 2009 - 2010 | | | | 2010 - 2011 | | | | 2011 - 2012 | | | |
| | Resident | | Non-Resident | | Resident | | Non-Resident | | Resident | | Non-Resident | | Resident | | Non-Resident | | Resident | | Non-Resident | | Resident | | Non-Resident | |
| | Per SH | FT | Per SH | FT | Per SH | FT | Per SH | FT | Per SH | FT | Per SH | FT | Per SH | FT | Per SH | FT | Per SH | FT | Per SH | FT | Per SH | FT | Per SH | FT |
| UH MANOA 3/ | | | | | | | | | | | | | | | | | | | | | | | | |
| Undergraduate 4/ | 180 | 2,160 | 508 | 6,096 | 214 | 2,568 | 600 | 7,200 | 248 | 2,976 | 692 | 8,304 | 282 | 3,384 | 784 | 9,408 | 316 | 3,792 | 876 | 10,512 | 350 | 4,200 | 968 | 11,616 |
| Graduate 4/ | 243 | 2,916 | 571 | 6,852 | 286 | 3,432 | 680 | 8,160 | 329 | 3,948 | 789 | 9,468 | 372 | 4,464 | 898 | 10,776 | 415 | 4,980 | 1,007 | 12,084 | 458 | 5,496 | 1,116 | 13,392 |
| Graduate-Nursing | 385 | 4,620 | 707 | 8,484 | 453 | 5,436 | 842 | 10,104 | 521 | 6,252 | 977 | 11,724 | 589 | 7,068 | 1,112 | 13,344 | 657 | 7,884 | 1,247 | 14,964 | 725 | 8,700 | 1,382 | 16,584 |
| Graduate-CBA Masters 5/ | 454 | 5,448 | 678 | 8,136 | 454 | 5,448 | 688 | 8,256 | 538 | 6,456 | 826 | 9,912 | 622 | 7,464 | 964 | 11,568 | 706 | 8,472 | 1,102 | 13,224 | 790 | 9,480 | 1,240 | 14,880 |
| Graduate - MAcc | 412 | 4,944 | 647 | 7,764 | 454 | 5,448 | 688 | 8,256 | 538 | 6,456 | 826 | 9,912 | 622 | 7,464 | 964 | 11,568 | 706 | 8,472 | 1,102 | 13,224 | 790 | 9,480 | 1,240 | 14,880 |
| Law - JD | 537 | 6,444 | 943 | 11,316 | 569 | 6,828 | 1,020 | 12,240 | 601 | 7,212 | 1,097 | 13,164 | 633 | 7,596 | 1,174 | 14,088 | 665 | 7,980 | 1,251 | 15,012 | 697 | 8,364 | 1,328 | 15,936 |
| Law - LLM | 993 | 11,916 | 993 | 11,916 | 1,074 | 12,888 | 1,074 | 12,888 | 1,155 | 13,860 | 1,155 | 13,860 | 1,236 | 14,832 | 1,236 | 14,832 | 1,317 | 15,804 | 1,317 | 15,804 | 1,398 | 16,776 | 1,398 | 16,776 |
| Medicine | 761 | 9,132 | 1,461 | 17,532 | 852 | 10,224 | 1,681 | 20,172 | 943 | 11,316 | 1,901 | 22,812 | 1,034 | 12,408 | 2,121 | 25,452 | 1,125 | 13,500 | 2,341 | 28,092 | 1,216 | 14,592 | 2,561 | 30,732 |
| UH HILO 3/ | | | | | | | | | | | | | | | | | | | | | | | | |
| Undergraduate | 125 | 1,500 | 398 | 4,776 | 147 | 1,764 | 461 | 5,532 | 169 | 2,028 | 524 | 6,288 | 191 | 2,292 | 587 | 7,044 | 213 | 2,556 | 650 | 7,800 | 235 | 2,820 | 713 | 8,556 |
| Graduate | 208 | 2,496 | 480 | 5,760 | 236 | 2,832 | 544 | 6,528 | 264 | 3,168 | 608 | 7,296 | 292 | 3,504 | 672 | 8,064 | 320 | 3,840 | 736 | 8,832 | 348 | 4,176 | 800 | 9,600 |
| Pharmacy 6/ | | | | | 767 | 9,204 | 1,513 | 18,156 | 849 | 10,188 | 1,711 | 20,532 | 931 | 11,172 | 1,909 | 22,908 | 1,013 | 12,156 | 2,107 | 25,284 | 1,095 | 13,140 | 2,305 | 27,660 |
| UH WEST O'AHU 3/ | 114 | 1,368 | 366 | 4,392 | 134 | 1,608 | 424 | 5,088 | 154 | 1,848 | 482 | 5,784 | 174 | 2,088 | 540 | 6,480 | 194 | 2,328 | 598 | 7,176 | 214 | 2,568 | 656 | 7,872 |
| UH COMMUNITY COLLEGES 7/ | | | | | | | | | | | | | | | | | | | | | | | | |
| High 8/ | 56 | 672 | 281 | 3,372 | 63 | 756 | 320 | 3,840 | 71 | 852 | 360 | 4,320 | 79 | 948 | 400 | 4,800 | 88 | 1,056 | 441 | 5,292 | 97 | 1,164 | 482 | 5,784 |
| Low 8/ | 56 | 672 | 249 | 2,988 | 63 | 756 | 256 | 3,072 | 71 | 852 | 264 | 3,168 | 79 | 948 | 272 | 3,264 | 88 | 1,056 | 281 | 3,372 | 97 | 1,164 | 290 | 3,480 |

Note: Tuition rates are subject to change. Figures listed exclude fees.

1/ Unless a special tuition schedule applies, regular day tuition applies to any credit course offered throughout the year for which a General Fund appropriation is authorized.

2/ Tuition rates were approved by the Board of Regents, May 19, 2005, unless otherwise noted. Tuition schedules are subject to change. Fees are not included in figures.

3/ Full-time (FT) tuition applies to students enrolling for 12 or more credits at UH-Manoa, UH Hilo, and UH West O'ahu. In accordance with University concurrent enrollment policy, students enrolling at multiple institutions/campuses during the same term pay the applicable tuition at each campus.

4/ Additional fees may be required based on program of study (see Table 2).

5/ The CBA master degrees offered in executive format charge the resident tuition established here plus additional fees delegated to and approved by the President.

6/ The projected entry date for the first class of students at the UH Hilo College of Pharmacy is fall 2007.

7/ Community Colleges tuition is charged on a per-credit basis for all enrolled credits. The full-time amount shown is based on 12 enrolled credits, and shown for comparative purposes only.

8/ With appropriate notification, individual UH Community Colleges may elect to charge up to the UHCC high, but not below the UHCC low.

Source: Executive Memorandum No. 05-01, May 23, 2005

TABLE 5
CONTINUING EDUCATION & COMMUNITY SERVICE PER-CREDIT-TUITION SCHEDULE
UNIVERSITY OF HAWAII
AY 2006-07 THROUGH AY 2011-12 1/
(Subject to Change, Excludes Fees)

| CAMPUS | ACADEMIC YEAR | | | | | | | | | | | | |
|------------------------------|---------------|---------|-------------|---------|-------------|---------|------------|---------|-------------|---------|-------------|---------|--|
| | 2006-2007 | | 2007 - 2008 | | 2008 - 2009 | | 2009 -2010 | | 2010 - 2011 | | 2011 - 2012 | | |
| | Resident | Non-Res | Resident | Non-Res | Resident | Non-Res | Resident | Non-Res | Resident | Non-Res | Resident | Non-Res | |
| UH MANOA OUTREACH COLLEGE 2/ | | | | | | | | | | | | | |
| Undergraduate 3/ | 180 | 508 | 214 | 600 | 248 | 692 | 282 | 784 | 316 | 876 | 350 | 968 | |
| Graduate 3/ | 243 | 571 | 286 | 680 | 329 | 789 | 372 | 898 | 415 | 1007 | 458 | 1116 | |
| Graduate-Nursing | 385 | 707 | 453 | 842 | 521 | 977 | 589 | 1112 | 657 | 1247 | 725 | 1382 | |
| Graduate-CBA Masters 4/ | 454 | 678 | 454 | 688 | 538 | 826 | 622 | 964 | 706 | 1102 | 790 | 1240 | |
| Graduate - MAcc | 412 | 647 | 454 | 688 | 538 | 826 | 622 | 964 | 706 | 1102 | 790 | 1240 | |
| Law-JD | 537 | 943 | 569 | 1020 | 601 | 1097 | 633 | 1174 | 665 | 1251 | 697 | 1328 | |
| Law-LLM | 993 | 993 | 1074 | 1074 | 1155 | 1155 | 1236 | 1236 | 1317 | 1317 | 1398 | 1398 | |
| UH HILO CCECS 2/ | | | | | | | | | | | | | |
| Undergraduate | 125 | 398 | 147 | 461 | 169 | 524 | 191 | 587 | 213 | 650 | 235 | 713 | |
| Graduate | 208 | 480 | 236 | 544 | 264 | 608 | 292 | 672 | 320 | 736 | 348 | 800 | |

Note: Tuition rates subject to change. Figures listed exclude fees.

1/ AY 2005-06 tuition rates were approved by the Board of Regents, March 16, 2001, unless otherwise noted. Tuition rates effective AY 2006-07 were approved by the Board of Regents, May 19, 2005. Tuition schedules are subject to change. Fees are not included in figures.

2/ At all campuses, tuition is not charged for credit courses subsidized under contractual agreements. In accordance with University concurrent enrollment policy, students enrolling at multiple institutions/campuses during the same term pay the applicable tuition at each campus.

3/ Additional fees may be required based on program of study (see Table 2).

4/ The CBA master degrees offered in executive format charge the resident tuition established here plus additional fees delegated to and approved by the President.

Source: Executive Memorandum No. 05-01, May 23, 2005

TABLE 6
SUMMER SESSION PER-CREDIT-TUITION SCHEDULE
UNIVERSITY OF HAWAII
AY 2006-07 THROUGH AY 2011-12 1/
(Subject to Change, Excludes Fees)

| CAMPUS | ACADEMIC YEAR | | | | | | | | | | | |
|---|--------------------------|---------|--------------------------|---------|--------------------------|---------|--------------------------|---------|--------------------------|---------|--------------------------|---------|
| | 2006-2007 Summer 2007 | | 2007-2008 Summer 2008 | | 2008-2009 Summer 2009 | | 2009-2010 Summer 2010 | | 2010-2011 Summer 2011 | | 2011-2012 Summer 2012 | |
| | Resident | Non-Res | Resident | Non-Res | Resident | Non-Res | Resident | Non-Res | Resident | Non-Res | Resident | Non-Res |
| UH MANOA 2/ Undergraduate 3/ Graduate 3/ Graduate - Nursing Graduate - CBA Masters 4/ Graduate - MAcc Law - JD Law - LLM | 180 | 180 | 214 | 214 | 248 | 248 | 282 | 282 | 316 | 316 | 350 | 350 |
| UH HILO 2/ Undergraduate Graduate | 180 | 180 | 214 | 214 | 248 | 248 | 282 | 282 | 316 | 316 | 350 | 350 |
| UH WEST O'AHU 2/ | 180 | 180 | 214 | 214 | 248 | 248 | 282 | 282 | 316 | 316 | 350 | 350 |
| UH COMMUNITY COLLEGES: SUMMER/SPECIAL TERM/ CUSTOMIZED PROGRAM 2/ | 147 | 180 | 181 | 214 | 215 | 248 | 249 | 282 | 283 | 316 | 317 | 350 |

Note: Tuition rates subject to change. Figures listed exclude fees.

1/ AY 2005-06 tuition rates were approved by the Board of Regents, March 16, 2001, unless otherwise noted. Tuition rates effective AY 2006-07 were approved by the Board of Regents, May 19, 2005. Tuition schedules are subject to change. Fees are not included in figures.

2/ At all campuses, tuition is not charged for credit courses subsidized under contractual agreements. In accordance with University concurrent enrollment policy, students enrolling at multiple institutions/campuses during the same term pay the applicable tuition at each campus.

3/ Additional fees may be required based on program of study (see Table 2).

4/ The CBA master degrees offered in executive format charge the resident tuition established here plus additional fees delegated to and approved by the President.

Source: Executive Memorandum No. 05-01, May 23, 2005

TABLE 7
 APPRENTICE AND JOURNEY WORKER
 PER-CLOCK-HOUR TUITION SCHEDULE 1/
 UNIVERSITY OF HAWAI'I
 AY 2006-07 THROUGH AY 2011-12
(Subject to Change, Excludes Fees)

| | ACADEMIC YEAR | | | | | |
|-----------------------|---------------|-----------|-----------|-----------|-----------|-----------|
| | 2006-2007 | 2007-2008 | 2008-2009 | 2009-2010 | 2010-2011 | 2011-2012 |
| UH COMMUNITY COLLEGES | 0.40 | 0.40 | 0.40 | 0.40 | 0.40 | 0.40 |

Note: Tuition rates subject to change. Figures listed exclude fees.

1/ Rates were approved by the Board of Regents, May 19, 2005.

Source: Executive Memorandum No. 05-01, May 23, 2005