

10

APPENDIX

- Attachment B: Implementation Plan and Articulation Within the UH System 10-2

- Enrollment Data..... 10-3
 - Focus classes..... 10-3
 - Foundations courses..... 10-6
 - Diversification courses..... 10-9
 - Hawaiian/Second Language courses.....10-10

- Web Sites..... blue sheet

- Acronyms..... green sheet

“Attachment B: Implementation Plan and Articulation Within the UH System”

NOTE: “Attachment B” was submitted to the BOR in 2000 as part of the materials justifying and explaining the change in UHM’s general education requirements. Community college faculty have interpreted this as definitive articulation procedures.

This articulation plan has since been modified (see chapter 7, System Articulation).

For Information Only

It is anticipated that transfer and articulation issues relating to the diversification requirement (i.e. courses designated as social sciences, natural sciences or humanities) will be handled through existing articulation procedures (E5.209) although these will have to be adapted to handle the liberalization of the requirement.

The articulation for the remaining components will be handled in a manner similar to that which currently operates for writing intensive courses. The experience gained in developing that program will be drawn upon in setting up similar University wide Committees to coordinate and support campus boards. There is no obligation on other campuses in the system to develop mechanisms for designating courses as satisfying any particular Mānoa general education requirement, but should they wish to do so they would need to set up their own board to review courses.

At Mānoa there will, in addition, be a General Education Committee to coordinate the work of the boards and to assume responsibility for the program as a whole. This committee will also be responsible for assessment of effectiveness of the program.

In the case of the Foundations Board at Mānoa it is intended that, particularly in the first few years, the board will actively promote the taskforce goal of linking courses where possible, promoting discussion of the particular needs of freshmen students that foundations courses should try to address, and soliciting ideas for new course combinations so that students have options beyond those currently offered (History 151/152, Math 100/Phil 110, English 100).

Enrollment Data

FOCUS CLASSES

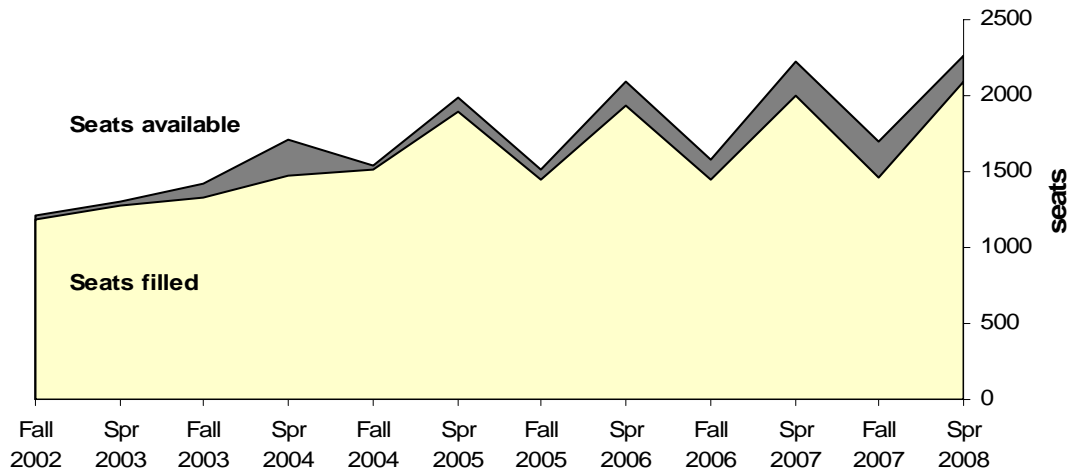
updated 03/04/08

Enrollment Summary: Fall 2002 - Spring 2008

Enrollment data typically collected between the 3rd and 6th week of the semester

Contemporary Ethical Issues

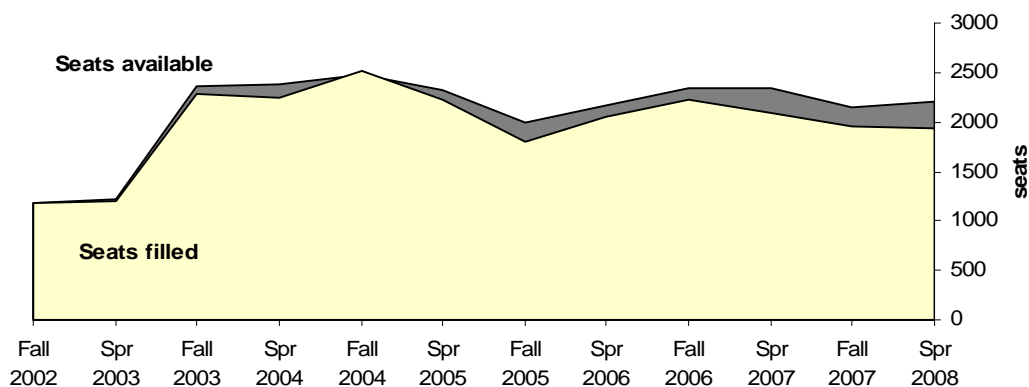
| | Number of Classes Offered ¹ | Number of Seats Available | Number of Seats Filled | Average Enrollment | Median Enrollment |
|-------------|--|------------------------------|---------------------------|-----------------------|----------------------|
| Spring 2008 | 89 | 2260 | 2092 (93%) | 23 | 20 |
| Fall 2007 | 72 | 1701 | 1467 (86%) | 20 | 20 |
| Spring 2007 | 98 | 2226 | 1996 (89%) | 20 | 20 |
| Fall 2006 | 56 | 1574 | 1450 (92%) | 26 | 20 |
| Spring 2006 | 94 | 2091 | 1932 (92%) | 21 | 20 |
| Fall 2005 | 59 | 1512 | 1446 (96%) | 25 | 22 |
| Spring 2005 | 80 | 1990 | 1891 (95%) | 24 | 21 |
| Fall 2004 | 56 | 1546 | 1507 (97%) | 27 | 22 |
| Spring 2004 | 59 | 1716 | 1478 (86%) | 25 | 22 |
| Fall 2003 | 46 | 1420 | 1329 (94%) | 29 | 21 |
| Spring 2003 | 42 | 1298 | 1272 (98%) | 30 | 25 |
| Fall 2002 | 38 | 1216 | 1181 (97%) | 31 | 26 |



¹ The Number of Classes Offered may differ from the number of classes approved because
 > approved classes that were cancelled or have zero enrollment are not included;
 > cross-listed classes have been combined, e.g., AMST 300/WS 300 = 1 class; or
 > a class whose meeting time & location all coincide with another class have been combined.

Hawaiian, Asian, & Pacific Issues

| | Number of Classes Offered ¹ | Number of Seats Available | Number of Seats Filled | Average Enrollment | Median Enrollment |
|-------------|---|------------------------------|---------------------------|-----------------------|----------------------|
| Spring 2008 | 62 | 2209 | 1930 (87%) | 31 | 29 |
| Fall 2007 | 56 | 2140 | 1957 (91%) | 35 | 34 |
| Spring 2007 | 63 | 2343 | 2081 (89%) | 33 | 31 |
| Fall 2006 | 58 | 2335 | 2229 (95%) | 38 | 35 |
| Spring 2006 | 67 | 2173 | 2049 (94%) | 31 | 29 |
| Fall 2005 | 54 | 1987 | 1807 (91%) | 33 | 30 |
| Spring 2005 | 71 | 2330 | 2230 (96%) | 31 | 30 |
| Fall 2004 | 66 | 2478 | 2520 (102%) | 38 | 35 |
| Spring 2004 | 63 | 2372 | 2246 (95%) | 36 | 33 |
| Fall 2003 | 64 | 2353 | 2282 (97%) | 36 | 33 |
| Spring 2003 | 39 | 1221 | 1199 (98%) | 31 | 28 |
| Fall 2002 | 38 | 1190 | 1177 (99%) | 31 | 26 |

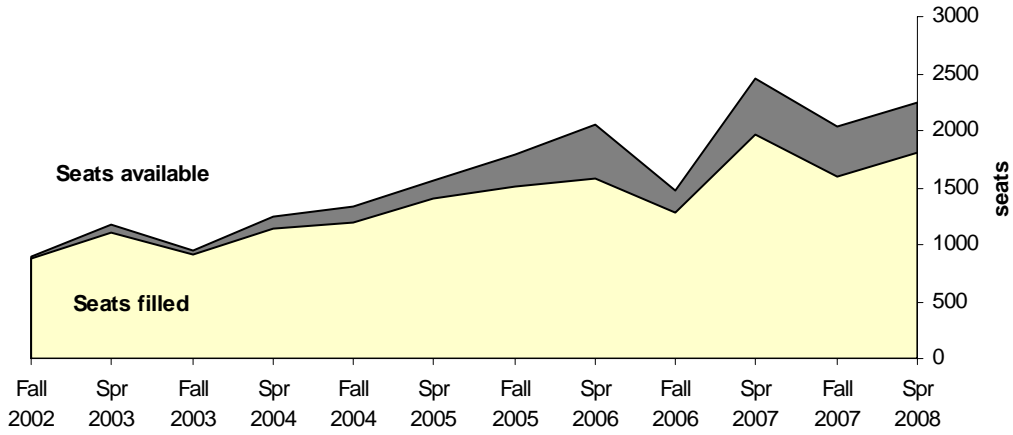


Oral Communication

| | Number of Classes Offered ¹ | Number of Seats Available | Number of Seats Filled | Average Enrollment | Median Enrollment |
|-------------|---|------------------------------|---------------------------|-----------------------|----------------------|
| Spring 2008 | 121 | 2245 | 1805 (80%) | 15 | 17 |
| Fall 2007 | 107 | 2042 | 1590 (78%) | 15 | 17 |
| Spring 2007 | 131 | 2456 | 1962 (80%) | 15 | 16 |
| Fall 2006 | 85 | 1468 | 1284 (87%) | 15 | 16 |
| Spring 2006 | 114 | 2061 | 1583 (77%) | 14 | 12 |
| Fall 2005 | 92 | 1788 | 1512 (85%) | 16 | 18 |
| Spring 2005 | 88 | 1555 | 1402 (90%) | 16 | 19 |
| Fall 2004 | 66 | 1326 | 1201 (91%) | 18 | 20 |
| Spring 2004 | 61 | 1251 | 1145 (92%) | 19 | 20 |
| Fall 2003 | 49 | 940 | 905 (96%) | 18 | 20 |
| Spring 2003 | 62 | 1175 | 1114 (95%) | 18 | 19 |
| Fall 2002 | 45 | 896 | 877 (98%) | 19 | 20 |

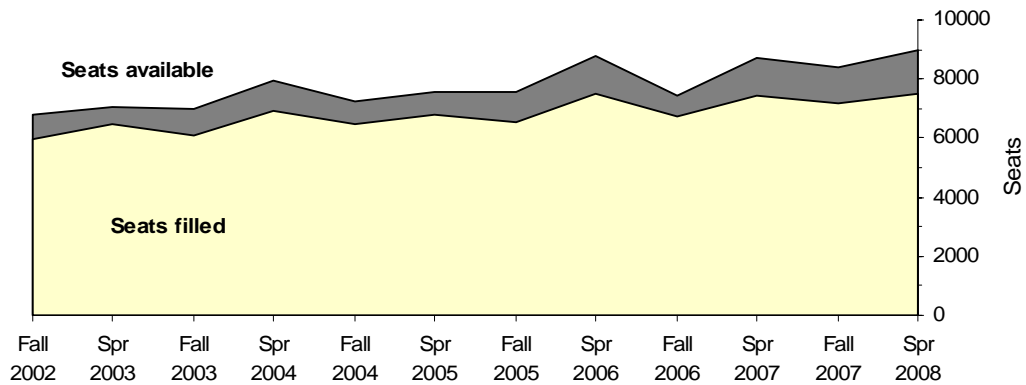
¹ The Number of Classes Offered may differ from the number of classes approved because
 > approved classes that were cancelled or have zero enrollment are not included;
 > cross-listed classes have been combined, e.g., AMST 300/WS 300 = 1 class; or
 > a class whose meeting time & location all coincide with another class have been combined.

Oral Communication, continued



Writing Intensive

| | Number of Classes Offered ¹ | Number of Seats Available | Number of Seats Filled | Average Enrollment | Median Enrollment |
|-------------|--|---------------------------|------------------------|--------------------|-------------------|
| Spring 2008 | 492 | 8955 | 7488 (84%) | 15 | 17 |
| Fall 2007 | 467 | 8373 | 7183 (86%) | 16 | 18 |
| Spring 2007 | 477 | 8689 | 7447 (86%) | 16 | 17 |
| Fall 2006 | 402 | 7459 | 6761 (91%) | 17 | 18 |
| Spring 2006 | 460 | 8754 | 7469 (85%) | 16 | 18 |
| Fall 2005 | 405 | 7542 | 6550 (88%) | 16 | 18 |
| Spring 2005 | 433 | 7536 | 6823 (91%) | 16 | 17 |
| Fall 2004 | 390 | 7249 | 6451 (89%) | 17 | 18 |
| Spring 2004 | 442 | 7937 | 6936 (87%) | 16 | 17 |
| Fall 2003 | 390 | 6977 | 6085 (87%) | 16 | 17 |
| Spring 2003 | 404 | 7050 | 6473 (92%) | 16 | 17 |
| Fall 2002 | 391 | 6793 | 5980 (88%) | 15 | 18 |



¹ The Number of Classes Offered may differ from the number of classes approved because
 > approved classes that were cancelled or have zero enrollment are not included;
 > cross-listed classes have been combined, e.g., AMST 300/WS 300 = 1 class; or
 > a class whose meeting time & location all coincide with another class have been combined.

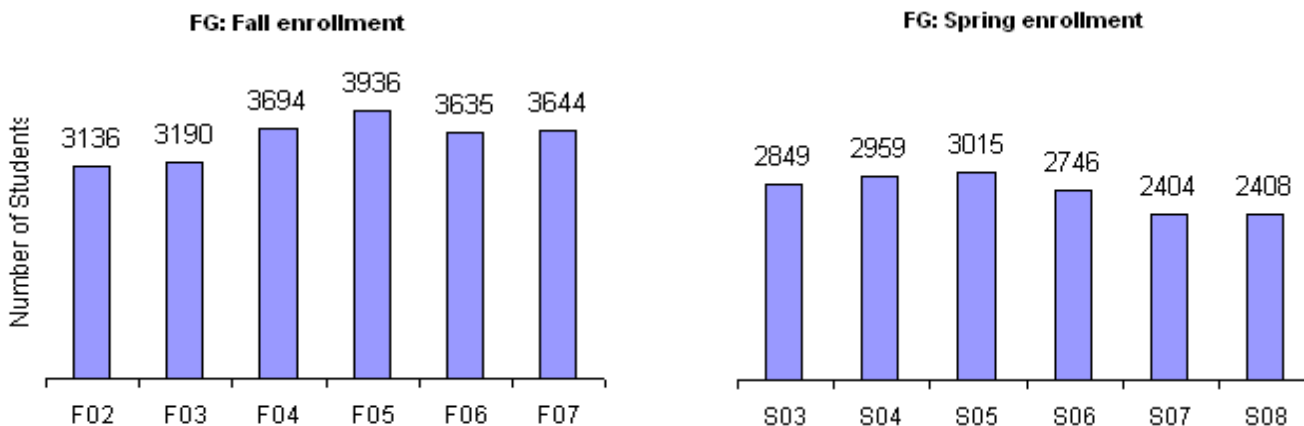
FOUNDATIONS Courses (Core)**Enrollment Summary: Fall 2002 - Spring 2008***Enrollment figures typically taken between the 3rd and 6th week of classes***Foundations: Global & Multicultural Perspectives (FG)**

| | AMST 150 | ANTH 151 | ANTH 152 | ART 175 | ART 176 | GEOG 102 | GEOG 151 |
|-----|----------|----------|----------|----------|----------|----------|----------|
| S08 | 49 | 369 | 338 | no sect. | 263 | 80 | 108 |
| F07 | 112 | 469 | 421 | 271 | no sect. | 129 | 148 |
| S07 | 57 | 359 | 330 | no sect. | 249 | 96 | 114 |
| F06 | 57 | 469 | 397 | 273 | no sect. | 218 | 106 |
| S06 | no sect. | 430 | 321 | no sect. | 266 | 221 | 71 |
| F05 | 137 | 366 | 396 | 260 | no sect. | 280 | 103 |
| S05 | 68 | 329 | 279 | no sect. | 245 | 245 | 90 |
| F04 | 61 | 460 | 461 | 245 | no sect. | 180 | 86 |
| S04 | 42 | 320 | 282 | no sect. | 217 | 240 | 89 |
| F03 | 75 | 315 | 229 | 223 | no sect. | 107 | 61 |
| S03 | * | 263 | 207 | no sect. | 216 | 192 | 70 |
| F02 | * | 148 | 129 | 214 | no sect. | 170 | 62 |

| | HIST 151 | HIST 152 | HIST 155 | HIST 161A | HIST 162A | LLL 150 | MUS 107 | REL 150 | TOTAL |
|-----|----------|----------|----------|-----------|-----------|----------|---------|---------|-------------|
| S08 | 336 | no sect. | no sect. | 15 | no sect. | no sect. | 55 | 647 | 2408 |
| F07 | 117 | no sect. | no sect. | 20 | 20 | 72 | 58 | 978 | 3644 |
| S07 | 184 | 346 | no sect. | 10 | 10 | no sect. | 43 | 606 | 2404 |
| F06 | 690 | 244 | no sect. | 20 | 20 | 100 | 88 | 953 | 3635 |
| S06 | 223 | 375 | no sect. | 18 | 15 | 25 | 89 | 692 | 2746 |
| F05 | 891 | 237 | no sect. | 24 | 12 | 101 | 92 | 1037 | 3936 |
| S05 | 298 | 492 | no sect. | 12 | 21 | no sect. | 100 | 836 | 3015 |
| F04 | 903 | 256 | no sect. | 36 | 17 | no sect. | 94 | 895 | 3694 |
| S04 | 226 | 671 | 12 | 16 | 37 | * | 67 | 740 | 2959 |
| F03 | 926 | 251 | * | 40 | 22 | * | 60 | 881 | 3190 |
| S03 | 322 | 878 | no sect. | 8 | 35 | * | 29 | 629 | 2849 |
| F02 | 1243 | 266 | 11 | 53 | 15 | * | 63 | 762 | 3136 |

* Course was not approved as a Foundations course during this semester

"No sect." = course not offered during this semester



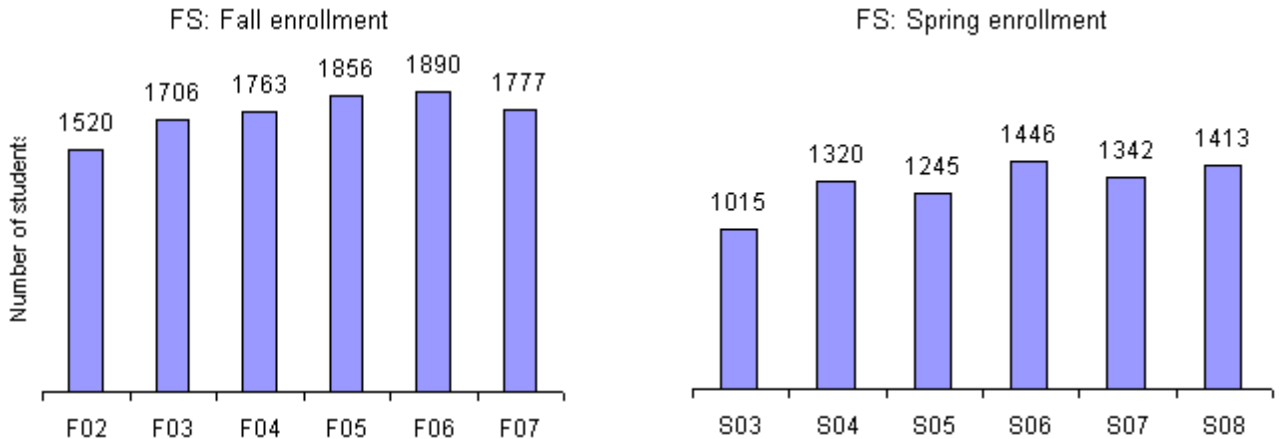
Foundations: Symbolic Reasoning (FS)

| | BUS 250 | ECON 301 | ICS 141 | ICS 241 | MATH 100 | MATH 111 | MATH112 |
|-----|----------|----------|---------|---------|----------|----------|----------|
| S08 | no sect. | 105 | 63 | 19 | 405 | * | 50 |
| F07 | no sect. | 82 | 42 | 35 | 703 | * | 16 |
| S07 | no sect. | 108 | 55 | 28 | 420 | * | 36 |
| F06 | no sect. | 123 | 35 | 31 | 674 | * | no sect. |
| S06 | no sect. | 100 | 63 | 34 | 422 | * | 16 |
| F05 | no sect. | 92 | 42 | 35 | 687 | * | no sect. |
| S05 | no sect. | 107 | 67 | 27 | 360 | no sect. | * |
| F04 | no sect. | 80 | 42 | 54 | 651 | 26 | * |
| S04 | 117 | 70 | 60 | 58 | 361 | no sect. | * |
| F03 | 104 | 65 | 76 | 43 | 660 | 12 | * |
| S03 | * | * | 74 | 82 | 359 | * | * |
| F02 | * | * | 96 | 58 | 703 | * | * |

| | MATH 140 | MATH 203 | MATH 215 | MATH 241 | MATH 251A | NREM 203 | PHIL 110 | PHIL 111 | TOTAL |
|-----|----------|----------|----------|----------|-----------|----------|----------|----------|-------|
| S08 | 137 | 76 | 86 | 166 | no sect. | 165 | 108 | 33 | 1413 |
| F07 | 167 | 90 | 115 | 211 | 15 | 166 | 88 | 47 | 1777 |
| S07 | 86 | 76 | 52 | 149 | no sect. | 165 | 128 | 39 | 1342 |
| F06 | 165 | 108 | 123 | 260 | 33 | 164 | 96 | 78 | 1890 |
| S06 | 99 | 123 | 58 | 209 | no sect. | 169 | 134 | 19 | 1446 |
| F05 | 164 | 90 | 109 | 273 | 41 | 163 | 100 | 60 | 1856 |
| S05 | 96 | 64 | 58 | 211 | no sect. | 165 | 90 | no sect. | 1245 |
| F04 | 161 | 66 | 120 | 256 | 33 | 168 | 63 | 43 | 1763 |
| S04 | 110 | 58 | 60 | 186 | no sect. | 121 | 119 | no sect. | 1320 |
| F03 | 154 | 52 | 111 | 207 | 30 | 106 | 86 | no sect. | 1706 |
| S03 | 108 | 44 | 61 | 168 | no sect. | * | 119 | * | 1015 |
| F02 | 201 | 52 | 60 | 250 | no sect. | * | 100 | * | 1520 |

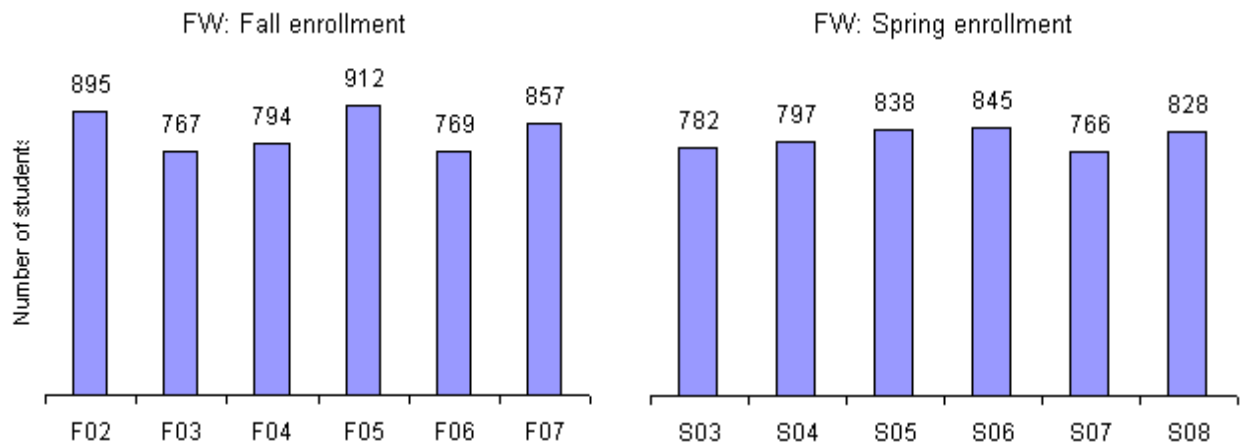
* Course was not approved as a Foundations course during this semester

"No sect." = course not offered during this semester



Written Communication (FW)

| | ENG 100A | ENG 100 | ENG 101 | ELI 100 | TOTAL |
|-----|----------|---------|---------|---------|-------|
| S08 | 36 | 670 | 89 | 33 | 828 |
| F07 | 42 | 677 | 99 | 39 | 857 |
| S07 | 14 | 618 | 74 | 60 | 766 |
| F06 | 37 | 610 | 83 | 39 | 769 |
| S06 | 19 | 689 | 83 | 54 | 845 |
| F05 | 32 | 734 | 104 | 42 | 912 |
| S05 | 10 | 691 | 90 | 47 | 838 |
| F04 | 34 | 627 | 82 | 51 | 794 |
| S04 | 13 | 656 | 67 | 61 | 797 |
| F03 | 29 | 623 | 76 | 39 | 767 |
| S03 | 15 | 607 | 115 | 45 | 782 |
| F02 | 33 | 709 | 100 | 53 | 895 |



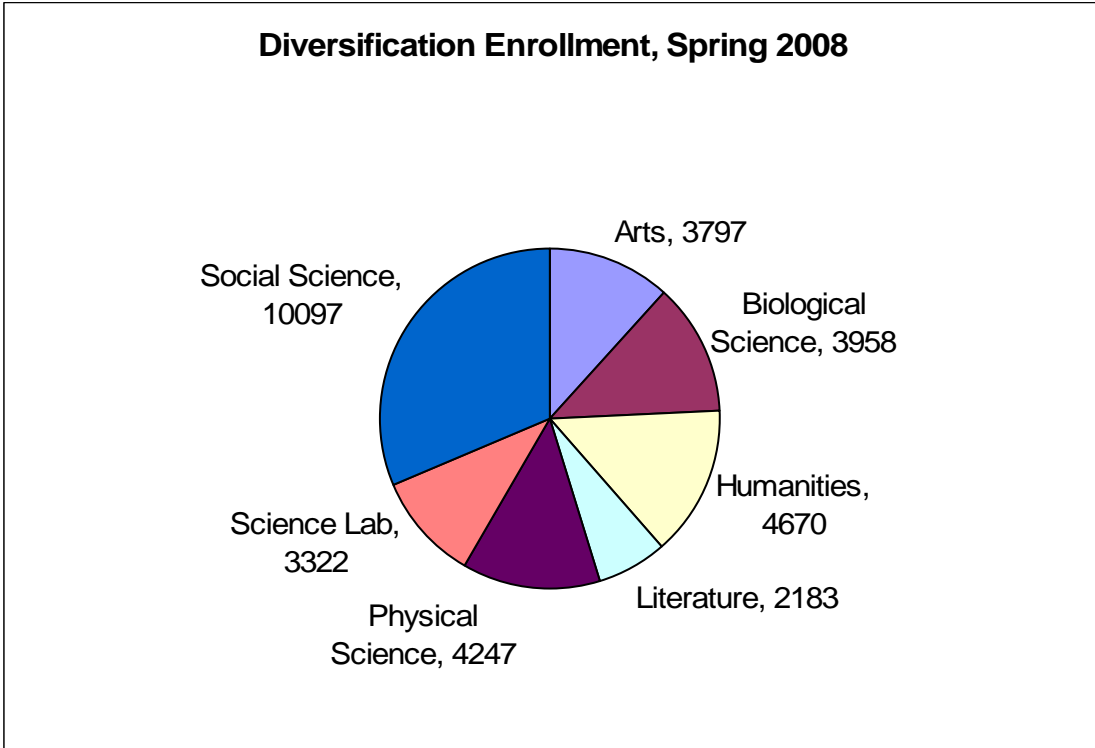
DIVERSIFICATION Courses (Core) Enrollment Summary Spring 2008

02/13/08

Enrollment snapshot taken between the 3rd and 6th week of classes

Number of students enrolled in Diversification courses by course level, Spring 2008

| Area | Course Level | | | | Grand Total |
|--------------------|--------------|------|-------|------|-------------|
| | 100 | 200 | 300 | 400 | |
| Arts | 1101 | 1112 | 934 | 650 | 3797 |
| Biological Science | 1535 | 488 | 1101 | 834 | 3958 |
| Humanities | 1224 | 575 | 1796 | 1075 | 4670 |
| Literature | 90 | 835 | 883 | 375 | 2183 |
| Physical Science | 1993 | 1006 | 885 | 363 | 4247 |
| Science Lab | 2072 | 737 | 431 | 82 | 3322 |
| Social Science | 2750 | 1196 | 4770 | 1381 | 10097 |
| Grand Total | 10765 | 5949 | 10800 | 4760 | 32274 |

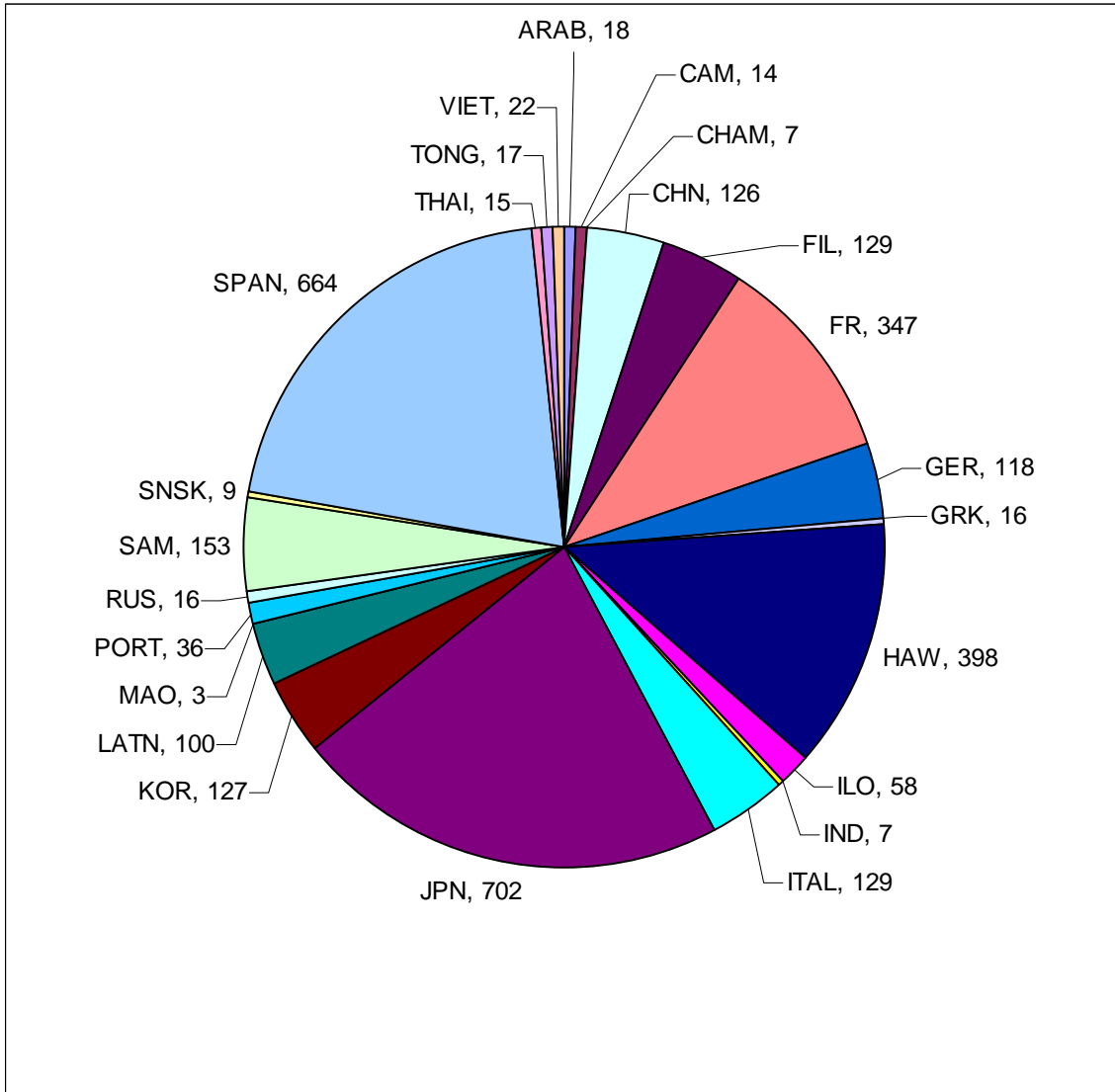


HAWAIIAN or SECOND LANGUAGE Courses Enrollment Summary Spring 2008

Enrollment snapshot taken between the 3rd and 6th week of classes

Updated 02/13/08

Total number of students enrolled=3231



DIVERSIFICATION Courses (Core)

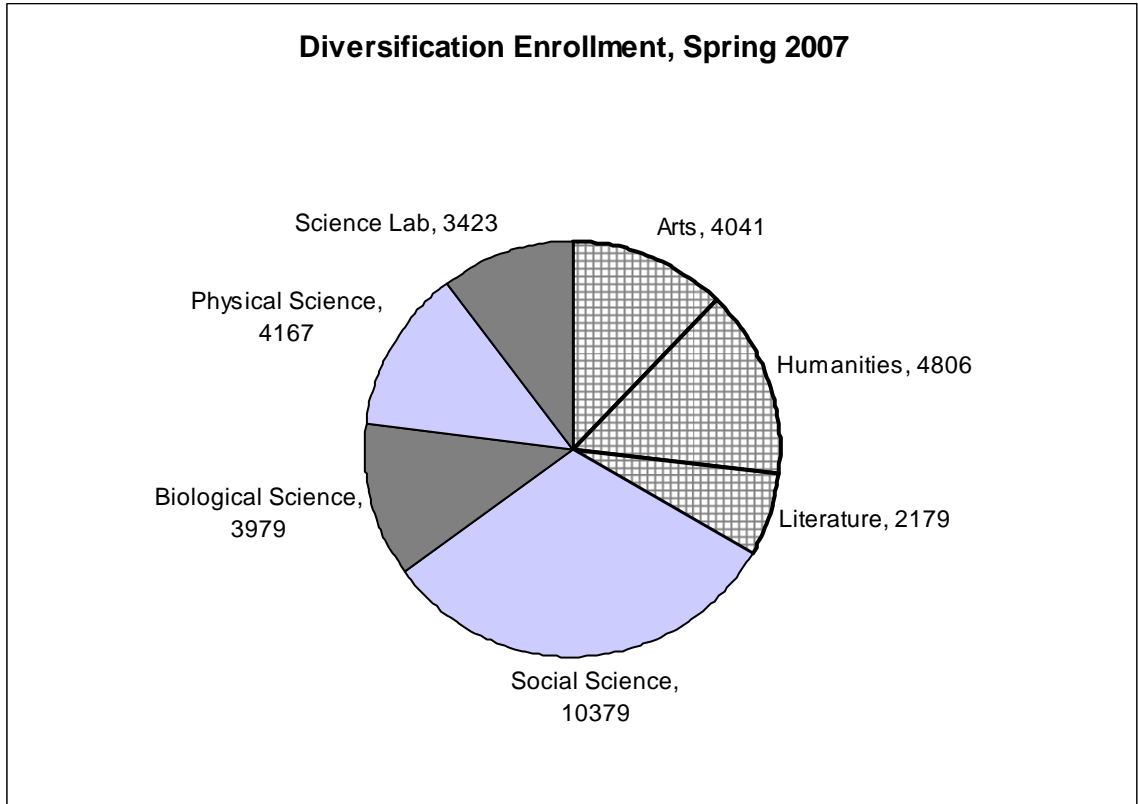
2/20/2007

Enrollment Summary Spring 2007

Enrollment snapshot taken between the 3rd and 6th week of classes

Number of students enrolled in Diversification courses by course level, Spring 2007

| Area | Course Level | | | | Grand Total |
|--------------------|--------------|-------------|--------------|-------------|--------------|
| | 100 | 200 | 300 | 400 | |
| Arts | 1269 | 1060 | 996 | 716 | 4041 |
| Biological Science | 1520 | 584 | 993 | 882 | 3979 |
| Humanities | 1318 | 684 | 1584 | 1220 | 4806 |
| Literature | 85 | 629 | 1085 | 380 | 2179 |
| Physical Science | 2061 | 1023 | 820 | 263 | 4167 |
| Social Science | 2883 | 1416 | 4685 | 1395 | 10379 |
| Science Lab | 2166 | 743 | 374 | 140 | 3423 |
| Grand Total | 11302 | 6139 | 10537 | 4996 | 32974 |



HAWAIIAN or SECOND LANGUAGE Courses Enrollment Summary Spring 2007

Enrollment snapshot taken between the 3rd and 6th week of classes

Updated 2/20/2007

Number of students enrolled
Total = 3297

