



Planning Your Visit to Coconut Island



HIMB's Community Education Program seeks to provide appropriate and meaningful opportunities for the community to tour the island and learn about the research taking place at the Institute as well as the island's rich natural and human history.

Scheduling a Tour

Tours of Coconut Island are generally led by volunteer guides and limited to one group per day.

It is important to submit your request as far in advance as possible to guarantee your preferred date. We ask for a minimum of two weeks notice- one or more months is suggested. Fall Reservations open August 1st, Spring Reservations open Dec 1st, Summer Reservations open April 1st.

Large groups are limited to weekday visits. We offer one Family Sunday a month for small groups of 12 participants or less.

Due to the logistics and program content, we generally limit school visits to 5th graders and above.

The following information is required to process your reservation request:

- Name of group
- Group contact person
- Date requested: 1st choice and 2nd choice
- Start time of requested visit: 9:00am or 10:00am
- Number of Adults and Children with age or grade level (maximum 40 total)
- Phone #
- Email address
- Mailing address

Once you have all the necessary information, please complete the Tour Reservation Form (the last page of this packet) and fax or email it to the Community Education Program (CEP) office.

Program Fees

Group Program fees: \$40/ up to first 20 participants, \$2/per additional participant. Make check payable to: **HIMB CEP, RCUH# 002454.**

Family Sunday tours are donation based. A suggested donation of \$3 - \$5 per participant is sincerely appreciated, and donations of any amount will be warmly accepted. Cash is fine, or checks can be made payable to: **UH Foundation – HIMB CEP**

Boat Fees

Groups of 18 participants or less can utilize our smaller water shuttle boat from Lilipuna Pier at no charge. Groups of 19 or more participants are REQUIRED to reserve our larger vessel, the Honu Kai, and must pay a transport fee - see next section for details.

Traveling to Coconut Island

Visitors to Coconut Island must travel by boat, either from Lilipuna Pier located directly across from the island, or from He'eia Pier. There is no visitor parking available at the Lilipuna Pier. Please review the parking options below and plan accordingly.

Groups of 18 or fewer participants can use our smaller water shuttle at no charge. However, participants must be able to climb down into and up out of a small open boat without difficulty. Our smaller water shuttle can take a maximum of six passengers at a time.

Lilipuna/drop-off: Small groups may elect to be dropped off at the entry gate to the Lilipuna pier located at 46-007 Lilipuna Road. Keep in mind, however, that participants will then have to walk down a steep hill for a distance of about 200 yards to the end of the pier where they will be met by their guide and travel by water shuttle boat to the island.

After drop off, vehicle drivers proceed on to our Mall parking area and call our shuttle van for transport back to the Pier to rejoin the group.

If you have participants that will have difficulty with the walk down the hill (or back up at the end of the tour) you may want to take the boat from He'eia.

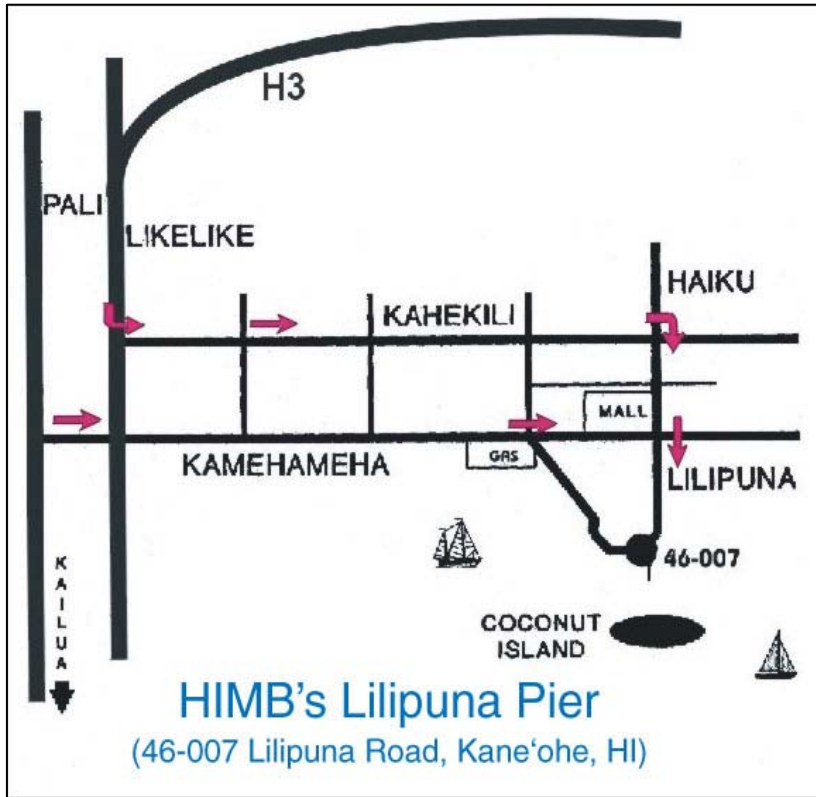
For groups of 19-40 participants: You **MUST** reserve our larger vessel, the Honu Kai, and pay a transport fee. You may select the pier your group prefers to be picked-up from.

Option A - He'eia Pier (\$75): Parking and drop off is easiest at He'eia Pier (see map at right). There is no large hill to walk down or up, waiting for drivers to rejoin the group (see next option) He'eia Pier is located at 46-499 Kamehameha Highway. The boat ride to Coconut Island usually takes about 30 minutes and we usually include a stop to look sea turtles.



no
for

Option B –Lilipuna Pier (\$60): Buses may drop off large groups at the entry gate to the Lilipuna pier. Participants will then walk down a steep hill for a distance of about 200 yards to the end of the pier where they will be met by their guide and board our larger vessel, the Honu Kai. Vehicle drivers proceed on to our Mall parking area and call our shuttle van for transport back to the Pier to rejoin the group.



46-007 Lilipuna Road

Driving Directions to HIMB:

HIMB's Visitor Parking is located within the Windward Mall Parking lot. Please carpool and drop your passengers off directly at our Lilipuna Pier with just the driver(s) catching the shuttle van back from the Mall.

Directions to the Lilipuna Pier:
(from Honolulu)

- Drive H1 West bound
- Take (63) Likelike Highway
- Then (83) Kahekili Highway Exit
- Turn right onto Haiku Road
- Haiku Road will become Lilipuna Road when you cross Kamehameha Hwy., continue along Lilipuna Road until you reach the gate to the Lilipuna Pier at

Getting from Lilipuna Pier to the Mall:

- As you exit the Lilipuna gate, turn right onto Lilipuna Road
- Continue straight through the first stop light, Lilipuna Road becomes Haiku Road
- Turn left at the next stop light onto Alaloa Street.
- Enter the Windward mall parking lot at any entrance on your left (there are 3 different points of entry along Alaloa) and drive up the ramp leading to the parking deck. Parking is allowed anywhere on the second floor parking deck.

HIMB visitor parking is allowed anywhere on the second floor parking deck at Windward Mall. Shuttle van service is provided from the Windward Mall to the Lilipuna Pier. The shuttle is a white mini-van with green University seals on either side panel.

Please call 218-2014 to notify the shuttle driver that you are waiting at the Mall for a pick-up.

The shuttle van pick-up is located on the ground level at the base of the mauka stairwell (there are only two stairwells, one near the mall, and one closer to the mountains -- the shuttle van pick-up is located at the mountain-facing stairwell). Please plan to drop-off all passengers at the Lilipuna pier 10-15 minutes before your scheduled start time so your driver(s) have time to make it back to the pier.

Driving Directions to Windward Mall parking (for those not dropping-off passengers):

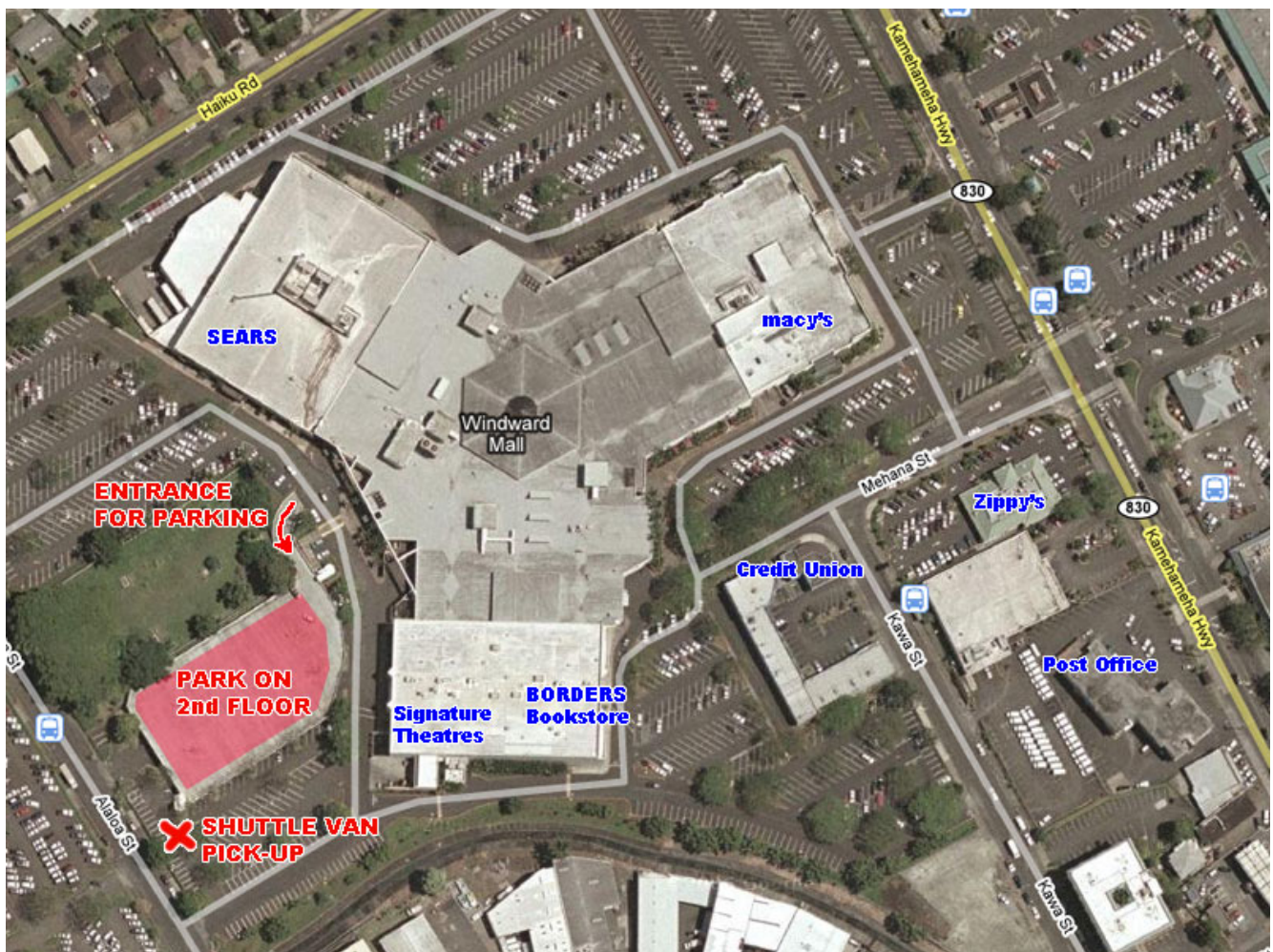
From Honolulu:

- Drive H1 West bound
- Take (63) Likelike Highway
- Then (83) Kahekili Highway Exit
- Turn right on Kahuhipa Street
- Turn left on Alaloa Street
- Turn right, entering the Windward Mall parking lot

From the West Side of Oahu:

- Drive H3 East bound toward Kāneʻohe
- Take Kāneʻohe Exit (#9) onto (63) Likelike Hwy
- Then (83) Kahekili Highway Exit
- Turn right on Kahuhipa Street
- Turn left on Alaloa Street
- Turn right, entering the Windward Mall parking lot

Location of HIMB Visitor Parking & Shuttle Van Pick-up at Windward Mall



The Tour

Tours are led by volunteers and staff of the Community Education Program. The 1½ to 2 hour walking tour provides an overview of some of the important research currently taking place at HIMB as well as an introduction to the natural and human history of Moku o Lo 'e (Coconut Island). Participants will NOT swim, snorkel, or enter the water during the walking tour.

On-Site Procedures

- 📌 **ALL participants are required to sign the HIMB Visitor Waiver.** Waivers for visitors under 18 years of age require the signature of a parent or guardian, so be sure to provide copies of this form to students in advance. Any participants arriving without a completed Waiver form will not be allowed to travel to Coconut Island and will miss the tour.
- 📌 Your guide will meet you at the meeting location designated on your tour confirmation form (either Lilipuna Pier or He'eia Pier). **Please be prepared to provide completed waiver forms for each of your group members at this time.**
- 📌 **Participants under the age of 13 are required by law to wear personal floatation devices (PFD's) while traveling by boat to/from the island.** If you have any group members under 13, please identify them immediately so we can provide those participants with a life vest.
- 📌 School and youth groups are required to provide adult chaperones as follows: below 6th grade, at least 1 adult for every 5 children; 6th grade and up, at least 1 adult for every 10 children.

Facilities Available

Picnic Area: There is a nice facility available called the Beach House which has a view, bathrooms, and picnic tables. Food is not available for purchase on the island, however, if your group is interested in bringing picnic lunches to enjoy during your visit, please inquire about the availability of the Beach House when you submit your reservation request. There is no fee to use the facility, however, groups who use the Beach House are asked to pack-out all of their trash.

What to Bring

- **Completed Waiver Forms:** REQUIRED for each participant
- **Sun Protection:** sunglasses, hats, and sunscreen
- **Rain Jacket:** rain showers are frequent in Kāne'ohe Bay and there is little shelter on the island
- **Footwear:** sneakers or athletic sandals are recommended for the island's dirt pathways
- **Drinking Water:** there are no drinking fountains along the tour route
- **Cameras:** are allowed

Questions?

Call or email us at: (808)236-7415 or himbcep@hawaii.edu



CEP Tour Reservation Form



Group Name: _____

Group contact person: _____

Group type: ___ Individual ___ Family ___ School ___ Community Group

Phone #: _____ home / work / school / cell (circle one)



Best # for us to call for last-minute cancellation or changes _____

Email address: _____

Mailing address: _____

Dates requested: List Weekdays for School and Community groups or Month for Family Sunday tours (offered once a month, 12 participants per tour)

1st choice _____

2nd choice _____

WEEKDAY start time requested: ___ 9:00am or ___ 10:00am

FAMILY SUNDAY start time requested: ___ 10:00am or ___ Noon

Total number in group: ___ (Weekday maximum 40) ___ Adults ___ Children
___ (Family Sunday max 12) ___ Adults ___ Children

School and youth groups are required to provide adult chaperones as follows: below 6th grade, at least 1 adult for every 5 children; 6th grade and up, at least 1 adult for every 10 children.

Program Fees: \$40/up to first 20 participants and \$2/additional participant.

Family Sundays are donation based (all donations are welcomed!

\$3 - \$5/person suggested.

Groups of 18 participants or fewer can transfer to Coconut Island via our small water shuttle boat. There is no additional cost for this service.

Groups of 19 or more must use our larger boat, the Honu Kai (see "Planning Your Visit"). Please indicate which pier you would prefer to be picked-up from:

Check one: ___ He'eia Pier (\$75) ___ Lilipuna Pier (\$60)

If it is available, would you like to reserve the beach house for lunch?

___ Yes ___ No