

# Dominican Republic

---

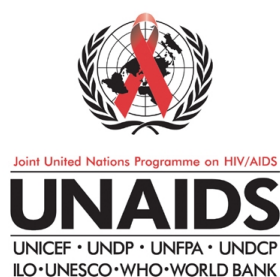
## Epidemiological Fact Sheets

on HIV/AIDS  
and Sexually  
Transmitted  
Infections



---

2002 Update



## 2 - Dominican Republic

### Estimated number of people living with HIV/AIDS

In 2001 and during the first quarter of 2002, UNAIDS and WHO worked closely with national governments and research institutions to recalculate current estimates on people living with HIV/AIDS. These calculations are based on the previously published estimates for 1997 and 1999 and recent trends in HIV/AIDS surveillance in various populations. A methodology developed in collaboration with an international group of experts was used to calculate the new estimates on prevalence and incidence of HIV and AIDS deaths, as well as the number of children infected through mother-to-child transmission of HIV. Different approaches were used to estimate HIV prevalence in countries with low-level, concentrated or generalized epidemics. The current estimates do not claim to be an exact count of infections. Rather, they use a methodology that has thus far proved accurate in producing estimates which give a good indication of the magnitude of the epidemic in individual countries. However, these estimates are constantly being revised as countries improve their surveillance systems and collect more information.

Adults in this report are defined as women and men aged 15 to 49. This age range covers people in their most sexually active years. While the risk of HIV infection obviously continues beyond the age of 50, the vast majority of those who engage in substantial risk behaviours are likely to be infected by this age. The 15 to 49 range was used as the denominator in calculating adult HIV prevalence.

#### ■ **Estimated number of adults and children living with HIV/AIDS, end of 2001**

These estimates include all people with HIV infection, whether or not they have developed symptoms of AIDS, alive at the end of 2001:

<b>Adults and children</b>	<b>130,000</b>		
<b>Adults (15-49)</b>	<b>120,000</b>	<b>Adult rate (%)</b>	<b>2.5</b>
<b>Women (15-49)</b>	<b>61,000</b>		
<b>Children (0-15)</b>	<b>4,700</b>		

#### ■ **Estimated number of deaths due to AIDS**

Estimated number of adults and children who died of AIDS during 2001:

<b>Deaths in 2001</b>	<b>7,800</b>
-----------------------	--------------

#### ■ **Estimated number of orphans**

Estimated number of children who have lost their mother or father or both parents to AIDS and who were alive and under age 15 at the end of 2001:

<b>Current living orphans</b>	<b>33,000</b>
-------------------------------	---------------

#### **UNAIDS/WHO Working Group on Global HIV/AIDS and STI Surveillance**

Global Surveillance of HIV/AIDS and sexually transmitted infections (STIs) is a joint effort of WHO and UNAIDS. The UNAIDS/WHO Working Group on Global HIV/AIDS and STI Surveillance, initiated in November 1996, guides respective activities. The primary objective of the Working Group is to strengthen national, regional and global structures and networks for improved monitoring and surveillance of HIV/AIDS and STIs. For this purpose, the Working Group collaborates closely with national AIDS programmes and a number of national and international experts and institutions. The goal of this collaboration is to compile the best information available and to improve the quality of data needed for informed decision-making and planning at national, regional, and global levels. The Epidemiological Fact Sheets are one of the products of this close and fruitful collaboration across the globe.

Within this framework, the Fact Sheets collate the most recent country-specific data on HIV/AIDS prevalence and incidence, together with information on behaviours (e.g. casual sex and condom use) which can spur or stem the transmission of HIV.

Not unexpectedly, information on all of the agreed-upon indicators was not available for many countries in 2001. However, these updated Fact Sheets do contain a wealth of information which allows identification of strengths in currently existing programmes and comparisons between countries and regions. The Fact Sheets may also be instrumental in identifying potential partners when planning and implementing improved surveillance systems.

The fact sheets can be only as good as information made available to the UNAIDS/WHO Working Group on Global HIV/AIDS and STI Surveillance. Therefore, the Working Group would like to encourage all programme managers as well as national and international experts to communicate additional information to them whenever such information becomes available. The Working Group also welcomes any suggestions for additional indicators or information proven to be useful in national or international decision-making and planning.

### **Assessment of the epidemiological situation ( 2002)**

As of the end of December 2001, THE CUMULATIVE NUMBER OF PEOPLE REPORTED LIVING WITH HIV/AIDS WAS 12,285.

The transmission category cited most frequently was sexual contact--74.8% of the cumulative cases are related to heterosexual transmission and 7.6% to homosexual/bisexual contact; 5.7% did not report a mode of transmission.

Perinatal transmission is sustained at approximately 2% of cumulative cases, which points to a greater number of women than men being infected. AIDS cases due to blood transfusion are 4% of the cumulative total. HIV transmission related to intravenous drug use is around 3.8%.

79.6% of the cases of AIDS have occurred between the ages of 15 and 44, which is the group of greatest sexual activity, in their reproductive age, and also most active economically.

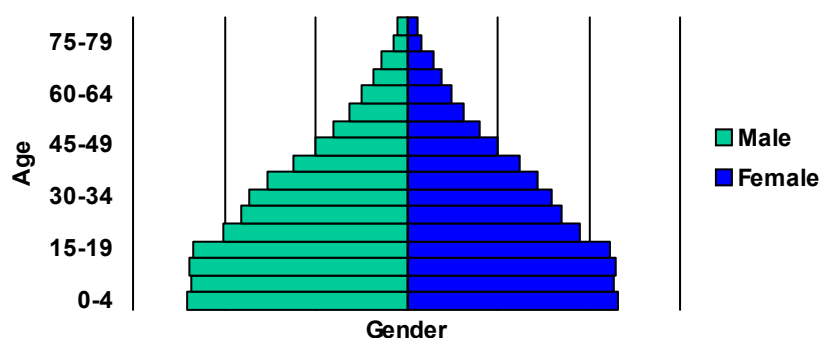
Young people aged 15-24 years constitute 18% of the AIDS cases, which implies that they were infected by HIV in early adolescence. Of those, 52% are men and 48% are women. The AIDS cases among the 25-34 age group represent 40% of the total number of AIDS cases reported.

Men continued to be the most affected, with 64% of the reported AIDS cases; females represent 35% of the cases sex. However, when data on infections is desegregated by age and sex, the number of women recently infected seems to be greater. The male:female ratio is currently 8:1; this might change because of the steady increase of women infected in the last five years.

The distribution of the cases per province of residence showed that a 48% of the cases are in the National District, followed by Puerto Plata (5.6%) Santiago (5%), San Cristobal (4.2%) and San Juan de la Maguena (3.5%).

## Country Information

## Population pyramid, 2001



Indicators	Year	Estimate	Source
Total Population (thousands)	2001	8,507	UNPOP
Population Aged 15-49 (thousands)	2001	4,561	UNPOP
Annual Population Growth	1995-2000	1.7	UNPOP
% of Urban Population	2000	65	UNPOP
Average Annual Growth Rate of Urban Population	1995-2000	2.7	UNPOP
GNI Per Capita (US\$)	1999	1,920	World Bank
GNI Per Capita Average Annual Growth Rate	1999	6.5	World Bank
Per Capita Expenditure of Health	1998	93	World Bank
% of Government Budget Spent on Health Care	1998	10.2	WHO
Total Adult Literacy Rate	1997	82	UNESCO
Adult Male Literacy Rate	1997	83	UNESCO
Adult Female Literacy Rate	1997	82	UNESCO
Male Primary School Enrolment Ratio	1996	94.2	UNESCO
Female Primary School Enrolment Ratio	1996	93.6	UNESCO
Male Secondary School Enrolment Ratio	1997	46.7	UNESCO
Female Secondary School Enrolment Ratio	1997	61.3	UNESCO
Crude Birth Rate (births per 1,000 pop.)	1995-2000	25	UNPOP
Crude Death Rate (deaths per 1,000 pop.)	1995-2000	6	UNPOP
Maternal Mortality Rate (per 100,000 live births)	1995	110	WHO
Life Expectancy at Birth	1995-2000	67	UNPOP
Total Fertility Rate	1995-2000	2.9	UNPOP
Infant Mortality Rate (per 1,000 live births)	1995-2000	41	UNPOP
Under 5 Mortality Rate	1995-2000	53	UNPOP

For consistency reasons the data used in the above table are taken from official UN publications.

## Contact address:

UNAIDS/WHO Working Group on Global HIV/AIDS  
and STI Surveillance  
20, Avenue Appia  
CH - 1211 Geneva 27  
Switzerland  
Fax: +41-22-791-4834

email: [HIV-AIDS@who.int](mailto:HIV-AIDS@who.int)

<http://www.who.int>  
<http://www.unaids.org>

## 4 - Dominican Republic

### HIV prevalence in different populations

This section contains information about HIV prevalence in different populations. The data reported in the tables below are mainly based on the HIV database maintained by the United States Bureau of the Census where data from different sources, including national reports, scientific publications and international conferences are compiled. To provide a simple overview of the current situation and trends over time, summary data are given by population group, geographical area (Major Urban Areas versus Outside Major Urban Areas), and year of survey. Studies conducted in the same year are aggregated and the median prevalence rates (in percentages) are given for each of the categories. The maximum and minimum prevalence rates observed, as well as the total number of surveys/sentinel sites, are provided with the median, to give an overview of the diversity of HIV-prevalence results in a given population within the country. Data by sentinel site or specific study from which the medians were calculated are printed at the end of this fact sheet.

The differentiation between the two geographical areas Major Urban Areas and Outside Major Urban Areas is not based on strict criteria, such as the number of inhabitants. For most countries, Major Urban Areas were considered to be the capital city and - where applicable - other metropolitan areas with similar socio-economic patterns. The term Outside Major Urban Areas considers that most sentinel sites are not located in strictly rural areas, even if they are located in somewhat rural districts.

#### ■ HIV sentinel surveillance

Group	Area		1987	1988	1989	1990	1991	1992	1993	1994	1995	1996	1997	1998	1999	2000	2001	
Pregnant women	Major Urban Areas	N-sites					1	1	1	1	1	1	1	1	1	1	1	
		Minimum					1	0.8	1.2	1.7	2	1.3	1.88	1.4	1.2	1.1		
		Median					1	0.8	1.2	1.7	2	1.3	1.88	1.4	1.2	1.1		
							1	0.8	1.2	1.7	2	1.3	1.88	1.4	1.2	1.1		
	Outside Major Urban Areas	N-sites	2	2	2	3	3	4	5	6	6	6	6	6	6	6	6	6
		Minimum	0	0	0.3	0.8	1.2	0	1.67	0.3	1.05	1.3						
		Median	0	0.35	0.5	0.8	2.3	2.7	2.2	2	2.145	2.4						
			0	0.7	0.7	1	4.1	7.9	5.5	2.2	4.46	4						

Group	Area		1987	1988	1989	1990	1991	1992	1993	1994	1995	1996	1997	1998	1999	2000	2001	
Sex workers	Major Urban Areas	N-sites			1	1	2	4	5	5	4	3	3	3	3	3	3	
		Minimum			3.6	1.8	3.2	4.9	3	0.6	0	3.5	2.5	1.1	2.4	3.2		
		Median			3.6	1.8	3.35	6.25	8	5.4	5.25	6	6.2	2.3	3.5	4		
					3.6	1.8	3.5	7.5	11.4	8	7.5	8	8.3	6.5	6.6	5.3		
	Outside Major Urban Areas	N-sites						1				1	2	2	2	2	2	
		Minimum						10.6				10	5.9	9.8	4.5	7.5	9.5	
		Median						10.6				10	9.5	11.45	7.6	8.5	10.9	
								10.6				10	13.1	13.1	10.7	9.5	12.4	

Group	Area		1987	1988	1989	1990	1991	1992	1993	1994	1995	1996	1997	1998	1999	2000	2001
-------	------	--	------	------	------	------	------	------	------	------	------	------	------	------	------	------	------

Injecting drug users

Group	Area		1987	1988	1989	1990	1991	1992	1993	1994	1995	1996	1997	1998	1999	2000	2001	
STI patients, Males/both & females	Major Urban Areas	N-sites			2	1	2	1	1	1	1	1	1	1	1	1	1	
		Minimum			1.6	3.4	4.7	6.1	7.8	8.1	6.7	7.1	5.7	3.29	4.4	6		
		Median			2.8	3.4	7.4	6.1	7.8	8.1	6.7	7.1	5.7	3.29	4.4	6		
					4	3.4	10.1	6.1	7.8	8.1	6.7	7.1	5.7	3.29	4.4	6		
	Outside Major Urban Areas	N-sites											2					
		Minimum											1.7					
		Median											9.2					
													16.7					

Group	Area		1987	1988	1989	1990	1991	1992	1993	1994	1995	1996	1997	1998	1999	2000	2001
-------	------	--	------	------	------	------	------	------	------	------	------	------	------	------	------	------	------

Men who have sex with men	Major Urban Areas	N-sites	1							1								
		Minimum	15							11.7								
		Median	15							11.7								
		Maximum	15							11.7								

#### ■ Additional data

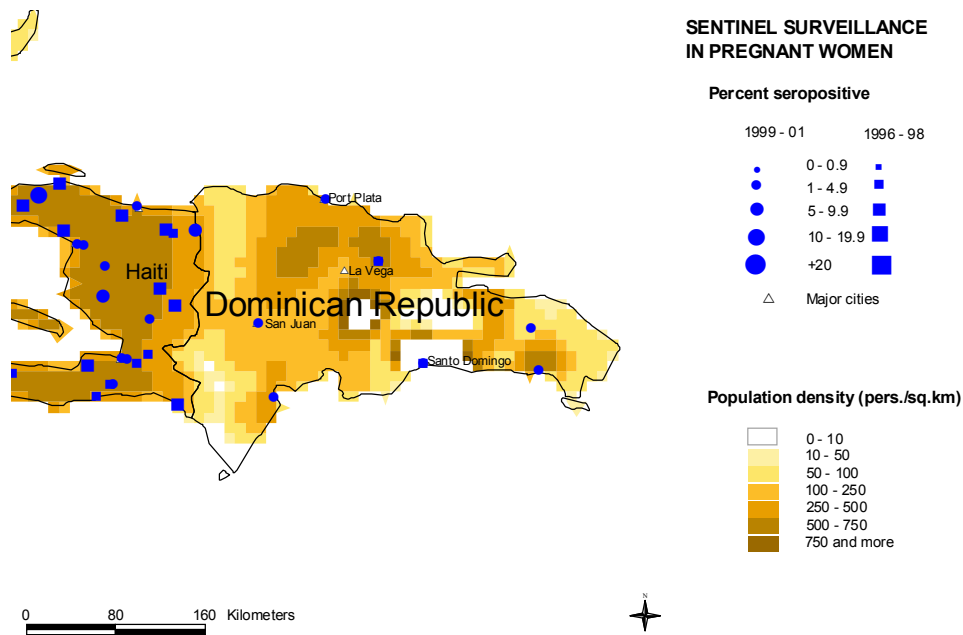
Group	Area		1987	1988	1989	1990	1991	1992	1993	1994	1995	1996	1997	1998	1999	2000	2001
Blood donors	National	Prevalence		5.5	4.8	1.7	0.9	1.9	3.1	9.2	6.1	2.8	4.3	6.2	4.8	6.1	

Group	Area		1987	1988	1989	1990	1991	1992	1993	1994	1995	1996	1997	1998	1999	2000	2001	
Tuberculosis patients	Major Urban Areas	N-sites						1			1							
		Minimum						6.4			9.1							
		Median						6.4			9.1							
								6.4			9.1							
	Outside Major Urban Areas	N-sites				1												
		Minimum				5												
Median					5													
					5													

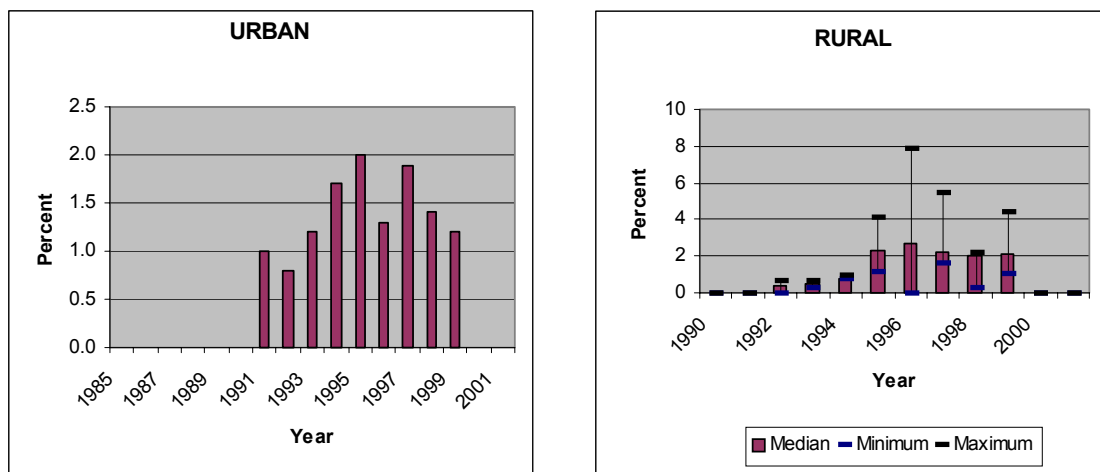
**Maps of HIV sentinel sites**

Mapping the geographical distribution of HIV sentinel sites for different population groups may assist in interpreting both the national coverage of the HIV surveillance system as well in explaining differences in levels and trends of prevalence. The UNAIDS/WHO Working Group on Global HIV/AIDS and STI Surveillance, in collaboration with the WHO Public Health Mapping Team, Communicable Diseases, is producing maps showing the location and HIV prevalence of HIV sentinel sites in relation to population density, major urban areas and communication routes.

Trends in antenatal sentinel surveillance for higher prevalence countries, or in prevalence among selected populations for countries with concentrated epidemics, are a new addition. These will be presented for those countries where sufficient data exist.



**Trends in HIV prevalence among antenatal clinic attendees**



Median prevalence and ranges are shown in areas with more than one sentinel site.

The boundaries and names shown and the designations used on the map do not imply the expression of any opinion whatsoever on the part of the World Health Organization concerning the legal status of any country, territory, city or area or of its authorities, or concerning the delimitation of its frontiers or boundaries. Dotted lines on maps represent approximate border lines for which there may not yet be full agreement. WHO 2002, all rights reserved.

## 6 - Dominican Republic

### Reported AIDS cases

#### AIDS cases by year of reporting

1979	1980	1981	1982	1983	1984	1985	1986	1987	1988	1989	1990	1991	1992	1993	1994	1995	1996	1997	1998	1999	2000
			9	8	53	74	243	372	485	279	317	390	408	433	505	450	427	414	495	438	
<b>2001 Total Unk</b>																					
320	6120		Date of last report: 18-Apr-2002																		

Following WHO and UNAIDS recommendations, AIDS case reporting is carried out in most countries. Data from individual AIDS cases are aggregated at the national level and sent to WHO. However, case reports come from surveillance systems of varying quality. Reporting rates vary substantially from country to country and low reporting rates are common in developing countries due to weaknesses in the health care and epidemiological systems. In addition, countries use different AIDS case definitions. A main disadvantage of AIDS case reporting is that it only provides information on transmission patterns and levels of infection approximately 5-10 years in the past, limiting its usefulness for monitoring recent HIV infections.

Despite these caveats, AIDS case reporting remains an important advocacy tool and is useful in estimating the burden of HIV-related morbidity as well as for short-term planning of health care services. AIDS case reports also provide information on the demographic and geographic characteristics of the affected population and on the relative importance of the various exposure risks. In some situations, AIDS reports can be used to estimate earlier HIV infection patterns using back-calculation. AIDS case reports and AIDS deaths have been dramatically reduced in industrialized countries with the introduction of HAART (Highly Active Anti-Retroviral Therapy).

#### AIDS cases by mode of transmission

Hetero: Heterosexual contacts.  
 Homo/Bi: Homosexual contacts between men.  
 IDU: Injecting drug use. This transmission category also includes cases in which other high-risk behaviours were reported, in addition to injection of drugs.  
 Blood: Blood and blood products.  
 Perinatal: Vertical transmission during pregnancy, birth or breastfeeding.  
 NS: Not specified/unknown.

Sex	Trans. Group	<97	1997	1998	1999	2000	2001	Unkn.	Total	%
All	All	4031	428	414	493	435	319		6120	100.0
	Hetero	2888	348	347	411	235	251		4480	73.2
	Homo/Bi	345	26	14	27	32	17		461	7.5
	IDU	132	19	22	22	27	16		238	3.9
	Blood	247	5	8	13	26	19		318	5.2
	Perinatal	68	23	10	5	3	2		111	1.8
	Other knowr	37	4	4	1	1	3		50	0.8
	Unknown	316	2	9	14	12	11		364	5.9
Male	All	2680	273	244	292	271	174		3934	100.0
	Hetero	1756	215	193	231	195	128		2718	69.1
	Homo/Bi	344	26	14	26	31	17		458	11.6
	IDU	97	16	19	12	17	11		172	4.4
	Blood	119	1	4	8	15	7		154	3.9
	Perinatal	40	12	5	2	2	2		63	1.6
	Other knowr	20	1	1	0	0	1		23	0.6
	Unknown	305	2	7	12	5			331	8.4
Femal	All	1351	149	164	175	65			1904	100.0
	Hetero	1132	133	154	180	140	123		1862	97.8
	IDU	35	3	3	10	10	5		66	3.5
	Blood	128	4	4	5	11	12		164	8.6
	Perinatal	28	11	5	3	1	0		48	2.5
	Other knowr	17	4	3	1	1	2		28	1.5
	Unknown	11	0	1	4	2			18	0.9
	NS	All	0	0	0	0	0			0
Hetero		0	0	0	0	0			0	
IDU		0	0	0	0	0			0	
Blood		0	0	0	0	0			0	
Perinatal		0	0	0	0	0			0	
Other knowr		0	0	0	0	0			0	
Unknown		0	0	0	0	0			0	

#### AIDS cases by age and sex

Sex	Age	<97	1997	1998	1999	2000	2001	Unkn.	Total	%
All	All	4031	428	414	493	435	319		6120	100.0
	0-4	82	25	11	4	6	2		130	2.1
	5-9	22	2	5	2	0	3		34	0.6
	10-14	10	3	2	1	1	1		18	0.3
	15-19	102	6	9	14	13	5		149	2.4
	20-24	473	45	36	49	38	33		674	11.0
	25-29	800	79	79	90	62	63		1173	19.2
	30-34	840	89	87	102	92	50		1260	20.6
	35-39	581	67	68	84	98	63		961	15.7
	40-44	361	43	52	78	59	36		629	10.3
	45-49	989	34	21	37	27	22		1130	18.5
	50-54	188	10	19	18	19	6		260	4.2
	55-59	84	8	12	9	9	3		125	2.0
	60+	99	14	9	13	10	12		157	2.6
NS	148	2	2	3	0	2		157	2.6	
Male	All	2578	273	244	292	270	174		3831	100.0
	0-4	46	13	6	2	4	2		73	1.9
	5-9	10	0	3	0	0	2		15	0.4
	10-14	4	0	0	0	0	0		4	0.1
	15-19	48	2	2	1	3	1		57	1.5
	20-24	284	30	12	18	16	10		370	9.7
	25-29	502	45	40	48	30	29		694	18.1
	30-34	59	63	54	66	68	32		342	8.9
	35-39	414	43	43	61	61	33		655	17.1
	40-44	247	30	35	46	41	24		423	11.0
	45-49	158	23	15	22	18	17		253	6.6
	50-54	148	6	14	13	13	13		207	5.4
	55-59	62	6	9	8	6	2		93	2.4
	60+	81	11	9	7	10	8		126	3.3
NS	99	1	2	0	0	1		103	2.7	
Female	All	1351	154	170	201	165	145		2186	100.0
	0-4	36	12	5	2	2	0		57	2.6
	5-9	11	2	2	2	0	1		18	0.8
	10-14	6	3	2	1	0	1		13	0.6
	15-19	54	4	7	13	10	4		92	4.2
	20-24	189	15	24	31	22	23		304	13.9
	25-29	298	34	39	42	32	34		479	21.9
	30-34	249	26	33	36	24	18		386	17.7
	35-39	167	24	25	23	37	30		306	14.0
	40-44	114	13	17	22	18	12		196	9.0
	45-49	831	11	6	15	9	5		877	40.1
	50-54	40	4	5	7	6	11		73	3.3
	55-59	22	2	3	1	3	1		32	1.5
	60+	18	3	2	3	2	4		32	1.5
NS	49	1	0	3	0	1		54	2.5	
NS	All	0	0	0	0	0			0	
	0-4	0	0	0	0	0			0	
	5-9	0	0	0	0	0			0	
	10-14	0	0	0	0	0			0	
	15-19	0	0	0	0	0			0	
	20-24	0	0	0	0	0			0	
	25-29	0	0	0	0	0			0	
	30-34	0	0	0	0	0			0	
	35-39	0	0	0	0	0			0	
	40-44	0	0	0	0	0			0	
	45-49	0	0	0	0	0			0	
	50-54	0	0	0	0	0			0	
	55-59	0	0	0	0	0			0	
	60+	0	0	0	0	0			0	
NS	0	0	0	0	0			0		

## Curable Sexually Transmitted Infections (STIs)

The predominant mode of transmission of both HIV and other STIs is sexual intercourse. Measures for preventing sexual transmission of HIV and STI are the same, as are the target audiences for interventions. In addition, strong evidence supports several biological mechanisms through which STI facilitate HIV transmission by increasing both HIV infectiousness and HIV susceptibility. Also significant is the observation of a sharp decline in the concentration of HIV in genital secretions when the infection is treated. Monitoring trends in STI can provide valuable information on the sexual transmission of HIV as well as the impact of behavioural interventions, such as promotion of condom use.

Clinical services offering STI care are an important access point for people at high risk for both AIDS and STIs, not only for diagnosis and treatment but also for information and education. Therefore, control and prevention of STIs have been recognized as a major strategy in the prevention of HIV infection and ultimately AIDS. One of the cornerstones of STI control is adequate management of patients with symptomatic STIs. This includes diagnosis, treatment and individual health education and counselling on disease prevention and partner notification. Consequently, monitoring different components of STI control can also provide information on HIV prevention within a country.

### ■ Reported STI syndromes

Syndrome	1990	1991	1992	1993	1994	1995	1996	1997	1998	1999	2000	2001	Total	Unk
Urethral discharge										4014	2281	5490	47915	
Genital Ulcer										3861	1560	4638	10059	
Vaginal discharge										123563	59049	155967	338599	
Lower Abdominal Pain										34517	17609	48871	100997	
Neonatal conjunctivitis										0	0	0	0	

Date of last report: 21-May-2002

### ■ Incidence of urethral discharge, men

Year	Area	Age Group	Rate	N=
2001	Urban		20.4	857

Comments: Urethritis en pacientes masculinos con mas de una consulta; no incluyen los paciente que solo asisten al establecimiento en una sola vez y que no regresaron.

Sources: Departamento de Estadísticas del la Unidad de ETS, Instituto Dermatológico de Santo Domingo.

### ■ Syphilis prevalence, women

Percent of blood samples taken from women aged 15-24 that test positive for syphilis during routine screening at selected antenatal clinics.

Year	Area	Age Group	Rate	N=
2001	Urban		2.1	27176

Comments: Prevalencia fr Pruebas VDRL del Hospital de Maternidad Nuestra Señora de la Altgracia, Santa Domingo.

Sources: Infolab de la Unidad de Laboratorio del Area V de salud de Santo Domingo.

## 8 - Dominican Republic

### Estimated size of populations at increased risk of HIV infection

	Year	Area	High estimate	Low estimate
Number of female sex workers				
Number of injecting drug users				
Number of men who have sex with men				

Comments:

Sources:

### Health service and care indicators

HIV prevention strategies depend on the twin efforts of care and support for those living with HIV or AIDS, and targeted prevention for all people at risk or vulnerable to the infection. It is difficult to capture such a large range of activities with one or just a few indicators. However, a set of well-established health care indicators may help to identify general strengths and weaknesses of health systems. Specific indicators, such as access to testing and blood screening for HIV, help to measure the capacity of health services to respond to HIV/AIDS - related issues.

#### ■ Access to health care

Indicators	Year	Estimate	Source
% of population with access to health services - total:	1998	89.5	SESPAS
% of population with access to health services - urban:	1998	95.6	SESPAS
% of population with access to health services - rural:	1998	78.9	SESPAS
Contraceptive prevalence rate (%):	1996	63.7	UNICEF/UNPOP
Percentage of contraceptive users using condoms:			
% of births attended by skilled health personnel:	1996	95.5	WHO
% of 1-yr-old children fully immunized - DPT:	2000	77.9	WHO/UNICEF
% of 1-yr-old children fully immunized - Measles:	2000	87.9	WHO/UNICEF
% of ANC clinics where HIV testing is available:			
% of PLWHA who have access to ARV:			

#### ■ Number of people living with HIV/AIDS (PLWHA) receiving highly active antiretroviral therapy (HAART)

	1995	1996	1997	1998	1999	2000	2001	Total	Unk
People initiating HAART therapy									

#### ■ Coverage of HIV Voluntary Counselling and Testing (VCT)

Number of functioning VCT sites per 100,000 population aged 15-49.

Year	Area	N=	Rate

Comments:

Sources:

## Knowledge and behaviour

In most countries the HIV epidemic is driven by behaviours (e.g.: multiple sexual partners, injecting drug use) that expose individuals to the risk of infection. Information on knowledge and on the level and intensity of risk behaviour related to HIV/AIDS is essential in identifying populations most at risk for HIV infection and in better understanding the dynamics of the epidemic. It is also critical information in assessing changes over time as a result of prevention efforts. One of the main goals of the 2nd generation HIV surveillance systems is the promotion of a standard set of indicators defined in the National Guide (Source: National AIDS Programmes, A Guide to Monitoring and Evaluation, UNAIDS/00.17) and regular behavioural surveys in order to monitor trends in behaviours and to target interventions.

The indicators on knowledge and misconceptions are an important prerequisite for prevention programmes to focus on increasing people's knowledge about sexual transmission, and, to overcome the misconceptions that act as a disincentive to behaviour change. Indicators on sexual behaviour and the promotion of safer sexual behaviour are at the core of AIDS programmes, particularly with young people who are not yet sexually active or are embarking on their sexual lives, and who are more amenable to behavioural change than adults. Finally, higher risk male-male sex reports on unprotected anal intercourse, the highest risk behaviour for HIV among men who have sex with men.

### ■ **Knowledge of HIV prevention methods**

Proportion of people citing correctly at least two acceptable ways of protection from HIV infection.

Year	Area	Age Group	Male	Female	All
------	------	-----------	------	--------	-----

Comments:

Sources:

### ■ **Misconception about AIDS (no incorrect beliefs)**

Proportion of people who correctly reject the two most common local misconceptions about AIDS transmission or prevention, and who know that a healthy looking person can transmit AIDS

Year	Area	Age Group	Male	Female	All
2000	All	15-19		38.2	
		15-24		41.1	
		15-49		39.3	
		20-24		44.3	

Comments:

Sources: MICS/UNICEF

### ■ **Median age at first sexual experience**

The age by which one half of young men or young women aged 15-24 have had penetrative sex (median age) of all young people surveyed.

Year	Area	Age Group	Male	Female	All
1996	All	20-49		18.7	
		25-64	16.1		

Comments:

Sources: Endesa 1996.

### ■ **Higher risk sex in the last year (adults)**

Proportion of adult respondents who have had sex with a non-regular (non-marital, non-cohabiting) partner in the last 12 months, of all adult respondents reporting sexual activity in the last 12 months.

Year	Area	Age Group	Male	Female	All
------	------	-----------	------	--------	-----

Comments:

Sources:

### ■ **Young people having multiple partners in last year (youth)**

Proportion of respondents who have had sex with more than one partner in the last 12 months.

Year	Area	Age Group	Male	Female	All
------	------	-----------	------	--------	-----

Comments:

Sources:

## 10 - Dominican Republic

### Knowledge and behaviour

#### ■ **Condom use in last higher risk sex (adults)**

The percentage of adult respondents who say they used a condom the last time they had sex with a non-regular (non-marital, non-cohabiting) partner, of those who have had sex with such a partner in the last 12 months.

Year	Area	Age Group	Male	Female	All
1996	All	15-49		12.4	
		15-59	44.5		

Comments:

Sources: DHS

#### ■ **Young people using a condom during premarital sex (youth)**

Proportion of young single people who used a condom at last sex.

Year	Area	Age Group	Male	Female	All
1996	all	15-19	46	13	
		15-24	48	13	
		20-24	50	14	

Comments:

Sources: DHS

#### ■ **Commercial sex in the last year**

Proportion of men reporting sex with a sex worker in the last 12 months.

Year	Area	Age Group	Rate	All
------	------	-----------	------	-----

Comments:

Sources:

#### ■ **Reported condom use in commercial sex**

Proportion of men reporting condom use the last time they had sex with a sex worker, of those who report having had sex with a sex worker in the last 12 months.

Year	Area	Age Group	Rate	All
------	------	-----------	------	-----

Comments:

Sources:

#### ■ **Higher risk male-male sex in the last year**

The percentage of men who have had anal sex with more than one male partner in the last 6 months, of all men surveyed who have had sex with a male partner.

Year	Area	Age Group	Rate	All
------	------	-----------	------	-----

Comments:

Sources:

#### ■ **Injecting drug users sharing equipment at last injection nationwide**

Percentage of injecting drug users active in the last month who report sharing injecting equipment the last time they injected drugs.

Year	Area	Age Group	Rate	All
------	------	-----------	------	-----

Comments:

Sources:

## Prevention Indicators

Male and female condoms are the only technology available that can prevent sexual transmission of HIV and other STIs. Persons exposing themselves to the risk of sexual transmission of HIV should have consistent access to high quality condoms. AIDS Programs implement activities to increase both availability of and access to condoms. These activities should be monitored and have resources directed to problem areas. The indicator below highlights the availability of condoms. However, even if condoms are widely available, this does not mean that individuals can or do access them.

### ■ **Condom availability nationwide**

Total number of condoms available for distribution nationwide during the preceding 12 months, divided by the total population aged 15-49.

Year	N	Rate
------	---	------

Comments:

Sources:

### ■ **Prevention of mother-to-child transmission (MTCT) nationwide**

Percentage of women who were counselled during antenatal care for their most recent pregnancy, accepted an offer of testing and received their test results, of all women who were pregnant at any time in the preceding two years.

Year	N	Rate
------	---	------

Comments:

Sources:

Blood safety programs aim to ensure that the majority of blood units are screened for HIV and other infectious agents. This indicator gives an idea of the overall percentage of blood units that have been screened to high enough standards that they can confidently be declared free of HIV.

### ■ **Screening of blood transfusions nationwide**

Percentage of blood units transfused in the last 12 months that have been adequately screened for HIV according to national or WHO guidelines.

Year	N	Rate
------	---	------

Comments:

Sources:

## 12 - Dominican Republic

---

### Sources

---

Data presented in this Epidemiological Fact Sheet come from several different sources, including global, regional and country reports, published documents and articles, posters and presentations at international conferences, and estimates produced by UNAIDS, WHO and other United Nations agencies. This section contains a list of the more relevant sources used for the preparation of the Fact Sheet. Where available, it also lists selected national Web sites where additional information on HIV/AIDS and STI are presented and regularly updated. However, UNAIDS and WHO do not warrant that the information in these sites is complete and correct and shall not be liable whatsoever for any damages incurred as a result of their use.

---

---

Aybar, L. E. 1990 PAHO/WHO HIV Surveillance H. Moscoso Puello, Pan American Health Organization/World Health Organization.

Dominican Republic 1990 PAHO/WHO HIV Surveillance Pan American Health Organization/World Health Organization.

Dominican Republic 2000 Sistema de Vigilancia Centineccion VIH Segun Poblaciones, Puestos y Ciudades, 1955-1998 UNAIDS, tables.

Dominican Republic National AIDS Control Program 2000 Sentinel Surveillance Results Unpublished tables, UNAIDS.

Espinal, M., A. Reingold, S. Sanchez, et al. 1993 Impact of HIV on Tuberculosis in Women of Reproductive Age of the Dominican Republic IX International Conference on AIDS, Berlin, 6/6-11, Poster PO-C06-2733.

Espinal, M. A., E. N. Perez, J. Baez, et al. 2000 Infectiousness of Mycobacterium Tuberculosis in HIV-1-Infected Patients with Tuberculosis: A Prospective Study Lancet, vol. 355, no. 9200, pp. 275-280.

Gomez, E., A. Ramirez, C. Pena, et al. 1992 Sentinel Seroprevalence Surveys for HIV-1 Infection in the Dominican Republic VIII International Conference on AIDS, Amsterdam, 7/19-24, Poster PoC 4066.

Gomez, E. 1991 PAHO/WHO HIV Surveillance SESPAS-PROCETS, Pan American Health Organization/World Health Organization.

Gomez, E., M. Sweat, M. Arbaje, et al. 1994 HIV and AIDS in the Dominican Republic: Current Status and Projected Impact SESPAS/ PROCETS, Dominican Ministry of Health, report.

Gomez, E., Vigilancia Epidemiologica PROCETS 1995 PAHO/WHO HIV Surveillance April 24, PAHO/WHO.

Gomez, E. PROCETS 1993 PAHO/WHO HIV Surveillance July 27, PAHO/WHO.

Koenig, R. E., L.De Castro, J. Acra, et al. 1987 Prevalence of Antibodies to HIV in Prostitutes and Dominican and Hatian Cane Cutters in Dominican Republic III International Conference on AIDS, Washington, D.C., 6/1-5, Abstract TP.187.

PROCETS 1990 PAHO/WHO HIV Surveillance Pan American Health Organization/World Health Organization.

PROCETS/NIAID 1990 PAHO/WHO HIV Surveillance Pan American Health Organization/World Health Organization.

PROCETS 1998 PAHO/WHO HIV Surveillance August 6, PAHO/WHO.

PROCETS, SESPAS 1995 PAHO/WHO HIV Surveillance April 15, PAHO/WHO.

PROCETS, SESPAS 1996 PAHO/WHO HIV Surveillance April 15, PAHO/WHO.

Rodriguez, E. M., E. A. De Moya, E. Guerrero, et al. 1993 HIV-1 and HTLV-1 in Sexually Transmitted Disease Clinics in the Dominican Republic Journal of Acquired Immune Deficiency Syndromes, vol. 6, no. 3, pp. 313-318.

Ramirez, E. A. D. 1997 PAHO/WHO HIV Surveillance April 17, PAHO/WHO.

Ramirez, A. 1999 PAHO/WHO HIV Surveillance 16 July, PAHO/WHO.

Tabet, S. R., E. A. de Moya, K. K. Holmes, et al. 1996 Sexual Behaviors and Risk Factors for HIV Infection among Men Who Have Sex with Men in the Dominican Republic AIDS, vol. 10, no. 2, pp. 201-206.

Volquez, C., J. Sanches, C. Ryan, et al. 1997 Manejo de las Enfermedades de Transmision Sexual en la Republica Dominicana: Prevalencia de Infecciones y Validacion del . . . V Pan-American Conference on AIDS and XI Latin American Congress on STD, Lima, Peru, 12/3-6, Abstract P030.

---

---

### Websites:

## 13 - Dominican Republic

### Annex: HIV Surveillance by site

Group	Area		1987	1988	1989	1990	1991	1992	1993	1994	1995	1996	1997	1998	1999	2000	2001	
Pregnant women	Major Urban Areas	Santo Domingo					1.00	0.80	1.20	1.70	2.00	1.30	1.88	1.40				
		Santo Domingo (Cons. Prenatal Hospital)														1.20		
	Outside Major Urban Areas	Barahona												2.56	2.10	1.05		
		El Seybo														3.10		
		La Romana										5.10	5.50	2.00	4.46			
		Puerto Plata								0.80	4.10	7.90	2.20	2.20	2.62			
		San Francisco de Macoris					0.00	0.00	0.30	0.80	1.20	0.30	1.67					
		San Juan					0.00	0.70	0.70	1.00	2.30	0.00	1.67	1.00	1.67			
		San. Francisco de Macoris													0.30	1.67		

Group	Area		1987	1988	1989	1990	1991	1992	1993	1994	1995	1996	1997	1998	1999	2000	2001	
Sex workers	Major Urban Areas	Santo Domingo			3.60	1.80		7.40										
		Santo Domingo (Boca Chica)					3.20											
		Santo Domingo (Centro Sanitario)								3.00	6.10	0.00						
		Santo Domingo (Clínica de ETS Hosp Fco)													6.50			
		Santo Domingo (Hosp. Luis E. Aybar)						5.10	8.00	4.10								
		Santo Domingo (Hosp. Moscoso Puella)					3.50		11.10	5.40	5.80	3.50	8.30			6.60		
		Santo Domingo (Las Caobas)					4.90	7.80	8.00	4.70	8.00	2.50	2.30	3.50				
		Santo Domingo (Los Mina)					7.50	11.40	0.60	7.50	6.00	6.20	1.10	2.40				
		Outside Major Urban Areas	Bani (Hosp. N. Sra. de Regla)									10.00	5.90	13.10	10.70	9.50		
			La Romana					10.60										
		La Romana (Complejo Micaeleano)										13.10	9.80	4.50	7.50			

Group	Area		1987	1988	1989	1990	1991	1992	1993	1994	1995	1996	1997	1998	1999	2000	2001
Injecting drug users																	

Group	Area		1987	1988	1989	1990	1991	1992	1993	1994	1995	1996	1997	1998	1999	2000	2001
STI patients, Males/both & females	Major Urban Areas	B/ Santo Domingo				3.40	10.10	6.10	7.80	8.10	6.70	7.10	5.70	3.29	4.40		
		M/ Santo Domingo			4.00												
	Outside Major Urban Areas	Santo Domingo			1.60												
		M/Not specified												16.70			
		Not specified											1.70				

Group	Area		1987	1988	1989	1990	1991	1992	1993	1994	1995	1996	1997	1998	1999	2000	2001
Men having sex with men	Major Urban Areas	Santo Domingo	15.00							11.70							

#### Additional data

Group	Area		1987	1988	1989	1990	1991	1992	1993	1994	1995	1996	1997	1998	1999	2000	2001
Blood donors																	

Group	Area		1987	1988	1989	1990	1991	1992	1993	1994	1995	1996	1997	1998	1999	2000	2001
Tuberculosis patients	Major Urban Areas	Santo Domingo					6.40			9.10							
	Outside Major Urban Areas	Urban area				5.00											