

## Efficacy of citalopram in the prevention of recurrent depression in elderly patients: placebo-controlled study of maintenance therapy

RENÉ KLYSNER, JESPER BENT-HANSEN, HANNE L. HANSEN, MARIANNE LUNDE, ELISABETH PLEIDRUP, DORTE LOLDRUP POULSEN, MARC ANDERSEN and HANS ERIK HØPFNER PETERSEN

**Background** The highly recurrent nature of major depression in the young and the elderly warrants long-term antidepressant treatment.

**Aims** To compare the prophylactic efficacy of citalopram and placebo in elderly patients; to evaluate long-term tolerability of citalopram.

**Method** Out-patients,  $\geq 65$  years, with unipolar major depression (DSM-IV: 296.2  $\times$  or 296.3  $\times$ ) and Montgomery-Åsberg Depression Rating Scale score  $\geq 22$  were treated with citalopram 20–40 mg for 8 weeks. Responders continued on their final fixed dose of citalopram for 16 weeks before randomisation to double-blind treatment with citalopram or placebo for at least 48 weeks.

**Results** Nineteen of the 60 patients using citalopram v. 41 of the 61 patients using placebo had recurrence. Time to recurrence was significantly different between citalopram- and placebo-patients, in favour of citalopram (log-rank test,  $P < 0.0001$ ). Long-term treatment was well tolerated.

**Conclusions** Long-term treatment with citalopram is effective in preventing recurrence of depression in the elderly and is well tolerated.

**Declaration of interest** Funded by H. Lundbeck A/S.

Depression is common in the elderly; 10–15% of elderly persons living in the community manifest clinically relevant symptoms of depression and 1–2% have major depression (Beekman *et al*, 1999). As in younger adults, the course of depression in the elderly shows a high degree of relapse and/or recurrence (Flint & Rifat, 1999) resulting in a conceptualisation of three phases of antidepressant treatment: acute treatment (resolution of acute depressive symptoms); continuation treatment (4–6 months relapse prevention); and maintenance treatment (recurrence prevention, prophylaxis) (Montgomery *et al*, 1988).

Only a few placebo-controlled studies have investigated the effect of maintenance treatment in the elderly; not all have followed the scheme outlined above. However, the reported studies have shown a beneficial effect of prophylactic treatment (Georgotas *et al*, 1989; Reynolds *et al*, 1999). This study investigated the efficacy of citalopram in recurrence prevention in elderly patients with major depression, using the three-phase scheme outlined above.

### METHOD

This was a single-centre study in out-patients at the Psychiatric Research Clinic, Frederiksberg Hospital. The study consisted of an open-label phase (Periods I–II, acute and continuation treatment periods) and a double-blind, randomised, parallel-group comparison of citalopram (20, 30, or 40 mg/day) and placebo treatment in the prevention of depression recurrence (Period III). The study was conducted according to the Helsinki Declaration (Tokyo, Venice, Hong Kong and Somerset West, amendments 1975, 1983, 1989 and 1996), the amended Draft on Testing Drugs in the Elderly (Note III/536/86-EN, 1988), and the Committee for Proprietary Medicinal Products guidelines (1991) for

good clinical practice. Approval by the Ethics Committee and by the Danish Regulatory Authorities was obtained before the study was initiated.

### Patient population

Patients were recruited from the Copenhagen and Frederiksberg municipalities in Denmark between March 1996 and December 1997. A letter was sent out to all citizens aged  $\geq 65$  years aimed at identifying undiscovered depression in that population. Those who were found to be depressed and fulfilled the entry criteria for the screening procedure at the research clinic were eligible for the study. All patients gave written informed consent before being included in the study.

Patients included had a unipolar major depressive episode (MDE; DSM-IV: 296.2  $\times$  or 296.3  $\times$ ; American Psychiatric Association, 1993) at a severity corresponding to a total score of  $\geq 22$  on the Montgomery-Åsberg Depression Rating Scale (MADRS; Montgomery & Åsberg, 1979).

Patients were excluded from the study if the index episode had lasted more than 12 months; if they had a history of schizophrenia, mania, hypomania, epilepsy, drug or alcohol misuse; or if they had severe somatic disorders. Similarly, patients were excluded if they had received fluoxetine within 5 weeks or other antidepressants within 3 days of the start of the study, lithium, carbamazepine or valproate within 2 weeks of the study, electroconvulsive therapy within 8 weeks of the study or sumatriptan or anticoagulants at study start. Finally, patients were excluded if they had a score of  $\geq 5$  on MADRS item 10 (suicidality).

### Study design

The study consisted of three periods: Period I was 8 weeks of open, acute treatment with citalopram; Period II was 16 weeks of open continuation treatment with citalopram to consolidate remission; Period III consisted of double-blind treatment with citalopram or placebo for a potential minimum of 48 weeks. The patients continued with double-blind treatment until the last patient had been treated for 48 weeks or had discontinued for any reason (June, 1999).

In Period I, the initial dose of citalopram was 10 mg/day for the first 3 days, then increased to 20 mg/day. After 1 week, the dose could be decreased to 10 mg/day in

case of intolerable adverse events; otherwise, the patient continued on 20 mg/day. After 3 weeks, the daily dose was increased to 20 mg for patients on 10 mg. For the remaining patients, the dose was increased by 10 mg after 3 and/or 5 weeks to a maximum of 40 mg, if there was either an increase or no change in Clinical Global Impressions of severity of illness score (CGI-S; Guy, 1976), compared with the score 3 weeks earlier, or if the absolute score was  $\geq 5$ . Patients with intolerable adverse events at the increased dose were withdrawn.

At week 8, patients entered Period II if their total MADRS score was  $\leq 11$  (Montgomery, 1994); if not, they were withdrawn. However, patients who showed a partial remission were allowed to continue for 4 weeks in Period II before the final assessment about remission was made. Patients who then had a MADRS total score  $\leq 11$  continued in the study whereas those with a score  $> 11$  were withdrawn. During Period II, the daily dose of citalopram remained fixed at the dose reached in Period I, i.e. 20, 30 or 40 mg/day. Patients experiencing a relapse (MADRS  $\geq 22$ , confirmed after 3–7 days) in Period II were withdrawn.

Patients completing Period II with a MADRS score  $\leq 11$  were randomised on a 1:1 basis, using a block size of 10, to receive double-blind treatment with identical looking tablets of either placebo or citalopram in Period III (same dose as in Period II, randomisation irrespective of dose).

No concomitant psychotropic medication was allowed, except for benzodiazepines and other hypnotics, the dose of which was to remain unchanged after week 8 of Period II. Treatment with benzodiazepines and other hypnotics could not be started during Periods II or III except in case of relapse/recurrence, if the investigator felt that intervention was needed before relapse (Period II) or recurrence (Period III) was confirmed.

### Visits and assessments

In Period I, patients were seen for a screening and a baseline visit, and also at weeks 1, 3, 5 and 8. In Period II, patients were seen upon entry (=last visit in Period I), and at weeks 4, 8, 12 and 16. In Period III, patients were seen at entry (=last visit in Period II) and at weeks 2 and 4, and subsequently every 4 weeks until discontinuation

or completion. In addition, all patients were seen for a discontinuation or completion visit.

Patients were assessed by the CGI-S, MADRS, the 17-item Hamilton Depression Rating Scale (HDRS; Hamilton, 1960), and the Melancholia Scale (MES; Bech *et al*, 1986) at baseline, at all subsequent visits in all periods (except for the visit at week 1 in Period I) and at premature discontinuations. Concomitant medication and adverse events were noted at each visit. Patient history and physical examination were registered at baseline. Laboratory tests were performed at the screening visit in Period I, at entry into Period III and at discontinuation/completion. Vital signs were assessed at entry into Period I, at week 8, at completion of Period II and at the end of each 24-week period in Period III. Height and body weight were recorded at baseline.

### Outcome measures and definitions

The primary measure of prophylactic efficacy was the time to recurrence of a depressive episode from the start of Period III. Recurrence of depression was defined as the patient reaching a MADRS total score of  $\geq 22$ , confirmed after 3–7 days.

The assessment of safety and tolerability of citalopram during prophylactic treatment was based on reporting of adverse events, vital sign measurements and laboratory assessments. Adverse events were either reported spontaneously by the patient, observed by the investigator, or elicited by the investigator using open questioning.

### Statistical analysis

In the primary analysis, the log-rank test was used to compare the time to recurrence of depression for patients treated with citalopram or placebo. Survival curves were estimated using the Kaplan–Meier method and overall treatment effect was estimated using the Cox proportional hazard model (Andersen *et al*, 1993; SAS Institute Inc., 1997).

In order to have a power of at least 90% at a 5% significance level for the primary analysis, a minimum sample size of 150 patients randomised into Period III (75 patients/group) was estimated (Goldman & Hillman, 1992). This was calculated to require inclusion of approximately 300 patients. The actual number of patients included in the study was 230.

The power at a 5% significance level was re-estimated to be 60–75%.

## RESULTS

### Disposition of patients

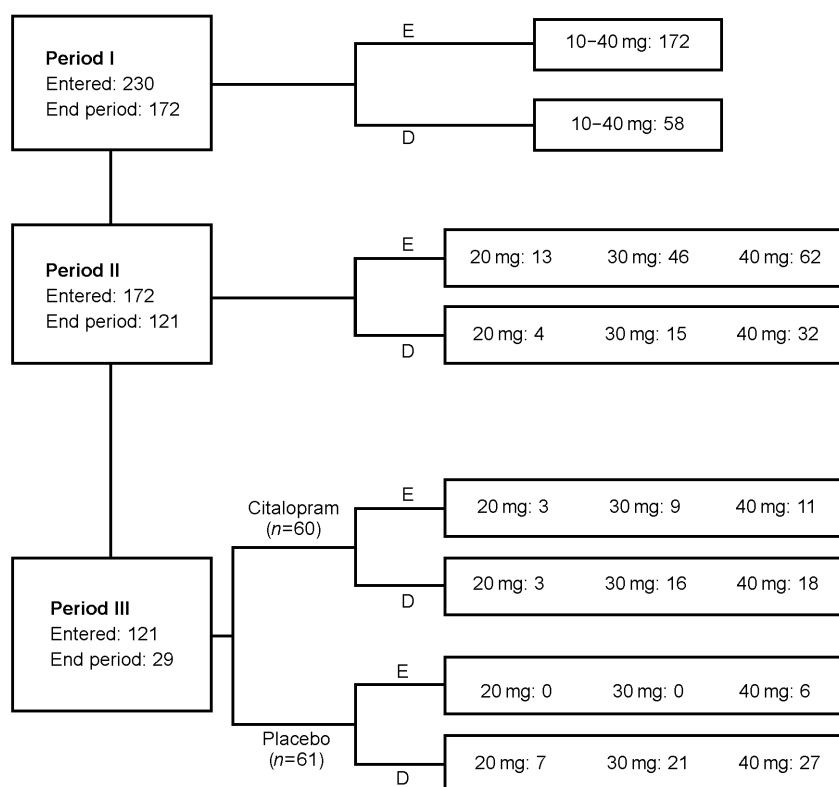
A total of 230 patients entered Period I (acute treatment; Fig. 1), of whom 172 (74.8%) entered Period II (continuation treatment). After completion of Period II, 121 patients (70.3% of patients entering Period II) were randomised into Period III to receive treatment with either citalopram (20, 30 or 40 mg; 60 patients) or placebo (61 patients). Of the 230 patients, 96 (42%) remitted after 8 weeks of treatment and 149 (65%) patients remitted after 12 weeks of treatment.

The primary reasons for discontinuation in Period I were adverse events (13%) and withdrawal of consent (10%), whereas in Period II the main reasons were withdrawal of consent (15%), lack of efficacy (8%) and adverse events (5%).

All patients randomised into Period III were included in the intention-to-treat (ITT) population for analysis of efficacy. This population comprised 23% males and 77% females, which is a good representation of a population of elderly patients with depression (Brown *et al*, 1995).

### Demographics and baseline characteristics of patients

Demographics and baseline characteristics of the patients were similar for the two treatment groups (Table 1). A total of 15% of the randomised patients in both groups had a history of previously diagnosed MDEs, of whom none reported having had more than two. In both treatment groups, the great majority of patients were 'moderately ill' or 'markedly ill' at baseline (CGI-S ratings), with about half the patients in each of these categories. Approximately 18% of the patients in both groups had previously received pharmacological treatment for depression (except one citalopram patient who had had electroconvulsive therapy). However, none of the patients had been treated with psychotropics within the last 3 months. A family history of major depression was noted for 15% (citalopram) and 11.5% (placebo) of the patients, respectively.



### Concurrent medical conditions and medication

There was no significant difference between treatment groups in respect of concurrent diseases and concomitant drug therapy. Approximately 72% of the patients in both treatment groups had an ongoing medical condition at baseline, and about 78% of the patients in both groups were continuing with at least one kind of medication upon entry into Period III.

### MADRS, HDRS and MES scores

For the ITT population, the baseline total MADRS scores (s.d.) at entry into Periods I and III were 27.0 (3.4) and 4.7 (3.7), respectively, in the citalopram group and 26.7 (3.1) and 3.9 (3.5), respectively, in the placebo group. The total HDRS scores were 17.2 (2.8) and 3.3 (2.7) (citalopram) and 17.2 (3.2) and 2.9 (2.6) (placebo), respectively, and the total MES scores were 16.3 (2.8) and 3.6 (2.8) (citalopram) and 16.7 (2.9) and 3.0 (2.7) (placebo), respectively.

### Recurrence of depression in the double-blind Period III

In the 60 patients randomised to continue on citalopram, there were 19 recurrences (32%) in contrast to 41 recurrences in the 61 patients randomised to placebo (67%). The total observation time from randomisation into Period III until recurrence, completion or discontinuation for other reasons than recurrence, was 53.8 (citalopram) and 30.3 (placebo) person-years, respectively. At week 48, 18 patients in the citalopram group and 38 patients in the placebo group had experienced a recurrence of depression (Table 2). The estimated probability of no recurrence within 48 weeks was 0.67 for patients treated with citalopram and 0.27 for placebo-treated patients. The time to recurrence in Period III differed significantly between the treatment groups, in favour of citalopram (log-rank test,  $\chi^2$  value 18.45, d.f.=1,  $P < 0.0001$ ; Fig. 2). The hazard ratio (citalopram *v.* placebo) was estimated at 0.32 (95% CI 0.19–0.56) using a Cox regression model with treatment as the only predictive factor.

Although the study was not powered for subgroup analysis, and despite the fact that a limited number of patients received 20 mg/day, the difference in time to recurrence between citalopram- and placebo-treated patients was statistically significant

**Fig. 1** Disposition of patients. E, end period/study; D, discontinued. Patients who had recurrence of depression are included.

**Table 1** Demographic and baseline characteristics of the intention to treat patients entering Period III

Characteristic	Period III Citalopram n=60	Period III Placebo n=61
Gender ratio (male/female) (%)	18/82	28/72
Age <sup>1</sup> (years)	74 (65–87)	75 (66–87)
Age <sup>2</sup> at first depressive episode (years)	74 (32–88)	72 (31–87)
MADRS at entry into Period I (s.d.)	27.0 (3.4)	26.7 (3.1)
HDRS at entry into Period I (s.d.)	17.2 (2.8)	17.2 (3.2)
MES at entry into Period I (s.d.)	16.3 (2.8)	16.7 (2.9)
No. of patients with:		
0 previous MDEs (%)	51 (85.0)	52 (85.3)
1 previous MDE (%)	8 (13.3)	6 (9.8)
2 previous MDEs (%)	1 (1.7)	3 (4.9)
No. of patients with:		
0 previous MDEs in the last 5 years (%)	56 (93.3)	56 (91.8)
1 previous MDE in the last 5 years (%)	4 (6.7)	4 (6.6)
2 previous MDEs in the last 5 years (%)	–	1 (1.6)
Ever attempted suicide (yes/no)	1/59	2/59
Family history of depression (yes/no) (%)	15/85	11.5/88.5

MADRS, Montgomery–Åsberg Depression Rating Scale; HDRS, Hamilton Depression Rating Scale; MES, Melancholia Scale; MDE, major depressive episode.

1. Age is calculated from date of birth to date of informed consent.

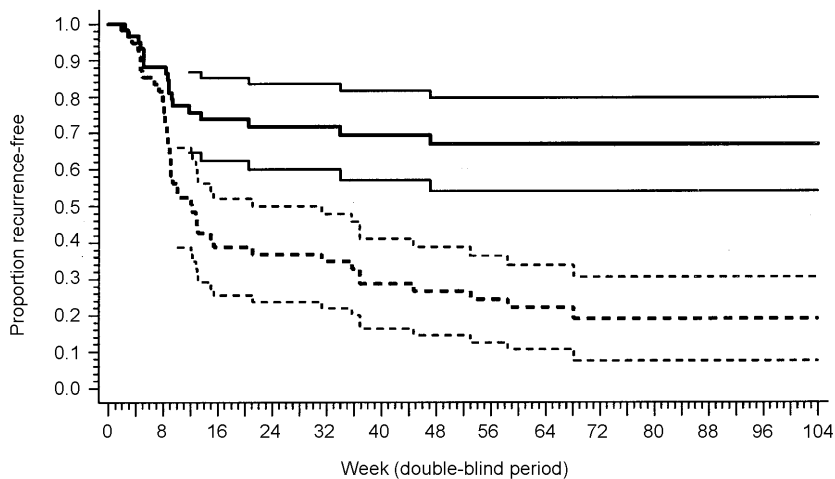
2. Age at first onset is calculated from year of birth to year when major depression was first diagnosed.

MADRS, HDRS and MES scores at entry into Period I are provided as mean (s.d.), other data as median (range).

**Table 2** Number of patients still under observation, the cumulative number of recurrences and the estimated cumulative proportion of recurrence-free patients (using Kaplan–Meier method) at selected time points

Week in double-blind period	Citalopram			Placebo		
	Patients under observation	Cumulative number of recurrences	Estimated cumulative proportion recurrence-free	Patients under observation	Cumulative number of recurrences	Estimated cumulative proportion recurrence-free
Randomisation	60	0	1	61	0	1
4	58	2	0.97	54	3	0.95
8	50	7	0.88	41	12	0.78
12	41	14	0.76	28	25	0.52
48	26	18	0.67	12	38	0.27
104	6	18	0.67	4	41	0.19

For the citalopram-treated patients one recurrence occurred at week 120 (not shown in table). The longest observation time was 126 weeks.



**Fig. 2** Kaplan–Meier estimates of the time to recurrence of depression in the intention-to-treat population; citalopram ( $n=60$ , unbroken lines), placebo ( $n=61$ , dashed lines). The 95% confidence intervals are shown as thinner lines (omitted for the first 12 weeks for clarity). The difference in time to recurrence was statistically significant (log-rank test (d.f.=1),  $\chi^2$  18.45,  $P < 0.0001$ ). Nineteen patients treated with citalopram versus 41 patients treated with placebo discontinued due to recurrence of depression. For number of patients at risk please refer to Table 2.

at all three dose levels (log-rank test, 20 mg/day,  $P=0.0009$ ; 30 mg/day,  $P=0.0227$ ; 40 mg/day,  $P=0.0188$ ). In the 20 mg/day group, none of the patients continuing on citalopram experienced a recurrence whereas all the patients switched to placebo did.

**Discontinuation in the double-blind Period III**

The majority of discontinuations in Period III occurred in the placebo group (55 (90%), compared with 37 (62%) in the citalopram group). The most frequent

reason was recurrence of depression (citalopram 19 (32%); placebo 41 (67%)) followed by withdrawal of consent (about 24% in both groups). A few patients discontinued because of adverse events (citalopram 10%; placebo 13%) with no difference in time to withdrawal between the two groups (log-rank test,  $P=0.1842$ ).

**Safety and tolerability**

In Period I, the most frequent adverse events ( $\geq 5\%$ ) were nausea, diarrhoea, headache, increased sweating, tremor, dizziness and fatigue (Table 3). Similar

symptoms, but with a reduced frequency, were seen in Period II. Sexual side-effects (spontaneous reporting) were rare and weight gain/loss was reported by only two patients.

Although data should be interpreted with caution, given the low number of events and the longer exposure time (about twice as long) for patients treated with citalopram than for patients on placebo, the pattern of adverse events for those who continued in Period III was similar in the two treatment groups (Table 3). The only events occurring in Period III at a frequency  $>5\%$  and at least twice as frequently in the citalopram group as in the placebo group, were back pain and influenza-like symptoms. None of these events were considered to be related to treatment. The events most consistently rated as treatment-related were nausea, diarrhoea, headache, increased sweating, tremor, dizziness and fatigue, consistent with the known adverse event profile of citalopram (Noble & Benfield, 1997). Of these, only increased sweating, tremor and fatigue were seen with a statistically higher frequency in the citalopram group compared with the placebo group in Period III.

Changes in laboratory or vital sign parameters were seen occasionally but were generally all single-parameter changes, unlikely to be related to the use of citalopram. A total of 8 of the 230 patients had alanine aminotransferase values out of normal range after baseline. However, three of these patients already had abnormal values at baseline, and all values were only slightly increased. One patient discontinued prematurely because of an increase

**Table 3** All adverse events appearing in  $\geq 3$  patients in at least I of the treatment periods

Adverse event	Period I	Period II	Period III <sup>1</sup>	Period III <sup>1</sup>
	Citalopram	Citalopram	Citalopram	Placebo
	10–40 mg n=230 (%)	20–40 mg n=172 (%)	20–40 mg n=60 (%)	20–40 mg n=61 (%)
Nausea	51 (22.2)	5 (2.9)	0	2 (3.3)
Diarrhoea	19 (8.3)	6 (3.5)	3 (5.0)	3 (4.9)
Headache	18 (7.8)	3 (1.7)	1 (1.7)	4 (6.6)
Increased sweating	15 (6.5)	13 (7.6)	4 (6.7)	3 (4.9)
Tremor	13 (5.7)	8 (4.7)	3 (5.0)	0
Dizziness	13 (5.7)	6 (3.5)	1 (1.7)	4 (6.6)
Fatigue	12 (5.2)	12 (7.0)	10 (16.7)	6 (9.8)
Hot flushes	8 (3.5)	6 (3.5)	1 (1.7)	3 (4.9)
Vertigo	6 (2.6)	1 (0.6)	0	1 (1.6)
Dry mouth	4 (1.7)	3 (1.7)	0	2 (3.3)
Insomnia	4 (1.7)	4 (2.3)	0	3 (4.9)
Rash	3 (1.3)	0	0	0
Hypertension (aggravated)	3 (1.3)	0	0	0
Vomiting	3 (1.3)	0	0	1 (1.6)
Abdominal pain	3 (1.3)	2 (1.2)	3 (5.0)	1 (1.6)
Hypokalaemia	2 (0.9)	4 (2.3)	2 (3.3)	2 (3.3)
Hypertension	2 (0.9)	3 (1.7)	1 (1.7)	2 (3.3)
Influenza-like symptoms	2 (0.9)	2 (1.2)	9 (15.0)	4 (6.6)
Impotence <sup>2</sup>	1 (1.6)	3 (1.7)	0	0
Traumatic injury	1 (0.4)	8 (4.7)	7 (11.7)	4 (6.6)
Pain	1 (0.4)	3 (1.7)	2 (3.3)	1 (1.6)
Back pain	0	0	9 (15.0)	2 (3.3)
Dyspepsia	0	0	3 (5.0)	0
Cystitis	0	1 (0.6)	3 (5.0)	1 (1.6)
Bronchitis	0	2 (1.2)	3 (5.0)	2 (3.3)

1. Data should be interpreted with caution given the difference in exposure time to double-blind medication, which was about twice as long for citalopram patients as for placebo patients.

2. Percentage is relative to the male sub-population.

in alanine aminotransferase, which the investigator considered probably to be related to treatment. The parameter had normalised 4 months later.

The abrupt discontinuation of citalopram in patients randomised to the placebo group neither induced new adverse events nor resulted in an increased intensity of adverse events present at randomisation.

A total of 34 serious adverse events were reported in 28 patients during the study, of which 18 were reported during the open treatment periods and 16 (11 in the citalopram group and 5 in the placebo group) during the double-blind treatment period. There were two serious adverse events with outcome death: one from oesophageal carcinoma, occurring during the open treatment period; and one for unknown reasons, occurring in a placebo patient. Neither of

these deaths nor the other serious adverse events were judged by the investigator to be related to treatment.

## DISCUSSION

This study clearly demonstrates the advantage of citalopram over placebo in the prevention of recurrence of depression in elderly patients with unipolar major depression. It is the first placebo-controlled, double-blind study evaluating the effect of a selective serotonin reuptake inhibitor (SSRI) against recurrent depression in elderly patients using the generally accepted three-phase prophylactic design (Montgomery *et al*, 1988). The hazard ratio of recurrence in citalopram-treated patients versus those on placebo was estimated at

0.32. Thus, the risk of recurrence was three times higher for patients on placebo than for patients on citalopram. The efficacy of citalopram was seen at all dose levels tested (20, 30 and 40 mg/day).

## Comparison with studies in 18- to 65-year-olds

Essentially similar results were obtained in a recent placebo-controlled citalopram study of the same design in 18- to 65-year-old patients with recurrent depression (Hochstrasser *et al*, 2001). Reynolds *et al* (1994) also found that outcomes of maintenance therapy were remarkably similar in elderly and younger patients with depression. Compared with the 18- to 65-year-olds (Bougerol *et al*, 1997), elderly patients tended to need a longer time to respond to acute treatment and a shorter time to recurrence. Both a longer time to remission (Reynolds *et al*, 1996) and a higher and more rapid rate of recurrence with older age have been reported previously (Reynolds *et al*, 1999).

Only 15% of the randomised elderly patients in this study had a history of previously diagnosed depression. Furthermore, a family history of depression was about half as frequent in this study as in a comparable study in 18- to 65-year-olds (Hochstrasser *et al*, 2001) consistent with the known profile in late-onset depression (Small, 1998). In spite of the absence of these known risk factors for recurrence of depression, the results of the present study demonstrate that the population it included was at high risk of recurrence. The results confirm that the risk of recurrence in geriatric patients is high, even after first-episode depression (Flint & Rifat, 1999; Reynolds *et al*, 1999).

## Study design

This study was designed to allow sufficient time to resolve symptoms of an episode of unipolar major depression and to distinguish relapse of an episode from recurrence of a new episode (Montgomery *et al*, 1988). Period I was designed to optimise response to citalopram (flexible dose and treatment extension up to 12 weeks), possibly explaining why only 3% of the patients discontinued because of lack of efficacy, reflecting the fact that a long time for resolution of symptoms could be required in some patients (Quitkin, 1992). Period II was designed to consolidate remission from the present depressive

episode (Montgomery *et al*, 1988). The following 48-week minimum duration of prophylactic therapy was chosen on the basis of the current knowledge of the time to recurrence seen in most depressive patients (about 24 weeks), but allowing enough time to obtain knowledge of recurrences occurring at later time-points; and of statistical power calculations.

### Treatment

The doses of 20, 30 or 40 mg/day citalopram were chosen on the basis of previous 12-week studies of citalopram in elderly patients with depression (Kyle *et al*, 1998) and on the well-established long-term efficacy and safety of doses of 20–40 mg/day citalopram in 18- to 65-year-old patients (Robert & Montgomery, 1995). The dose to which patients responded during acute treatment, and remained well on during continuation treatment, was maintained during prophylactic treatment, as studies have indicated that a full dose of antidepressants is more effective than a reduced dose during prophylactic treatment (Franchini *et al*, 1998).

### Relapse versus recurrence

It might be questioned whether the depressive episodes recorded in Period III were relapses rather than recurrences. However, because the design of the study followed the recommendations given by the experts in this field (Montgomery *et al*, 1988), new depressive episodes occurring in Period III were regarded as recurrences. This is further substantiated by the fact that the duration of an untreated depressive episode is usually considered to be 6–8 months (American Psychiatric Association, 1993). When patients entered Period III in this study, their index episode had started at least 6.5 months earlier. Furthermore, if the patients, although symptom free, were still in the depressive phase of their index episode when they entered Period III, it is most likely that the patients randomised to placebo would relapse very early. Thus, the difference in treatment effect of citalopram and placebo should be greatest at the time immediately following randomisation. The fact is, however, that a substantial part of the recurrences occurred in weeks 8–12 after randomisation, and citalopram was superior to placebo in preventing recurrence throughout the observation period.

### CLINICAL IMPLICATIONS

- Continued citalopram treatment beyond the first 6 months of a depressive episode significantly reduces the risk of recurrence.
- The risk of recurrence in a group of elderly patients with depression is three times higher following switch to placebo than following continuation on the active drug.
- Long-term treatment in the elderly (average 75 years of age) is well tolerated.

### LIMITATIONS

- The study does not permit evaluation of reduced dose effectiveness in maintenance treatment.
- Because fewer patients were included in the study than originally planned, the power of the study was decreased.
- Although conclusive and concordant with data in adults, confirmation of study findings is required as this is the first study of its kind with a selective serotonin reuptake inhibitor.

RENÉ KLYSNER, MD, JESPER BENT-HANSEN, MD, HANNE L. HANSEN, MD, MARIANNE LUNDE, ELISABETH PLEIDRUP, MD, DORTE LOLDRUP POULSEN, MD, Psychiatric Research Clinic, Frederiksberg Hospital, Denmark; MARC ANDERSEN, PhD, HANS ERIK HØPFNER PETERSEN, MSc, International Clinical Research, H. Lundbeck A/S, Denmark

Correspondence: Marc Andersen, Biostatistics Department, International Clinical Research, H. Lundbeck A/S, Ottiliavej 9, DK-2500 Valby, Denmark. Tel: +45 36 30 1311, ext. 2302; fax: +45 36 44 0787; e-mail: ma@lundbeck.com

(First received 15 November 2001, final revision 18 March 2002, accepted 21 March 2002)

### Safety and tolerability of prophylactic treatment

Prophylactic treatment with citalopram was well tolerated in the elderly patients in this study. This is an important finding, given the particular vulnerability of elderly patients to adverse drug reactions and the high frequency of concurrent diseases and concomitant drug therapy in these patients (Pollock, 1999).

The pattern of adverse events was in agreement with other results regarding long-term safety of SSRIs (Zajecka *et al*, 1999) and was comparable to the adverse events seen in placebo-treated patients. Notably, sexual symptoms, a common and bothersome reaction to SSRIs (Kennedy *et al*, 2000), were reported with very low frequency. However, the frequency could have been underestimated because specific enquiries were not made about these events. Weight gain was only reported by

one patient (citalopram) in Period III in agreement with a previous long-term study (Hochstrasser *et al*, 2001).

### Premature discontinuation

Apart from recurrence, the most common primary reasons for premature discontinuations in Period III were withdrawal of consent and adverse events, which is to be expected in a long-term study in an elderly population. It is of major importance that the abrupt discontinuation of citalopram in patients randomised to the placebo group caused no worsening of the adverse event profile. Although the sample size was small and the study was not designed to investigate this, it indicates that abrupt discontinuation of citalopram in the elderly is not associated with discontinuation symptoms.

In conclusion, citalopram effectively reduces the rate of recurrence of depression

in elderly patients. Moreover, long-term treatment with citalopram is well tolerated. This study confirms available data indicating that maintenance treatment in patients with depression is efficacious in reducing recurrence rates and is beneficial even after first-episode depression.

## REFERENCES

- American Psychiatric Association (1993)** *Diagnostic and Statistical Manual of Mental Disorders* (4th edn) (DSM-IV). Washington, DC: APA.
- Andersen, P. K., Borgan, Ø., Gill, R. D., et al (1993)** *Statistical Methods Based on Counting Processes*. New York: Springer-Verlag.
- Beekman, A. T., Copeland, J. R. & Prince, M. J. (1999)** Review of community prevalence of depression in later life. *British Journal of Psychiatry*, **174**, 307–311.
- Bech, P., Kastrup, M. & Rafaelsen, O. J. (1986)** Mini-compendium of rating scales for states of anxiety, depression, mania, schizophrenia with corresponding DSM-III syndromes. *Acta Psychiatrica Scandinavica*, **73**, 1–37.
- Bougerol, T., Scotto, J.-C., Patris, M., et al (1997)** Citalopram and fluoxetine in major depression. Comparison of two clinical trials in a psychiatrist setting and in general practice. *Clinical Drug Investigation*, **14**, 77–89.
- Brown, S. L., Salive, M. E., Guralnik, J. M., et al (1995)** Antidepressant use in the elderly: association with demographic characteristics, health-related factors, and health care utilization. *Journal of Clinical Epidemiology*, **48**, 445–453.
- CPMP Guidelines (1991)** Clinical evaluation of antidepressant drugs. *Circular 2825*, (Rev. 7).
- Flint, A. J. & Rifat, S. L. (1999)** Recurrence of first-episode geriatric depression after discontinuation of maintenance antidepressants. *American Journal of Psychiatry*, **56**, 943–945.
- Franchini, L., Gasperini, M., Perez, J., et al (1998)** Dose-response efficacy of paroxetine in preventing depressive recurrences: a randomised, double-blind study. *Journal of Clinical Psychiatry*, **59**, 229–232.
- Georgotas, A., McCue, R. E. & Cooper, T. B. (1989)** A placebo-controlled comparison of nortriptyline and phenelzine in maintenance therapy of elderly depressed patients. *Archives of General Psychiatry*, **46**, 783–786.
- Goldman, A. L. & Hillman, D. W. (1992)** Exemplary data: Sample size and power in the design of event-time clinical trials. *Controlled Clinical Trials*, **13**, 256–271.
- Guy, W. (1976)** *ECDEU Assessment Manual for Psychopharmacology*. Clinical Global Impressions (028-CGI). Rockville, MD: United States Department of Health, Education and Welfare, 217–222.
- Hamilton, M. (1960)** A rating scale for depression. *Journal of Neurology, Neurosurgery and Psychiatry*, **23**, 56–62.
- Hochstrasser, B., Isaksen, P. M., Koponen, H., et al (2001)** Prophylactic effect of citalopram in unipolar, recurrent depression: Placebo-controlled study of maintenance therapy. *British Journal of Psychiatry*, **178**, 304–310.
- Kennedy, S. H., Eisfeld, B. S., Dickens, S. E., et al (2000)** Antidepressant-induced sexual dysfunction during treatment with moclobemide, paroxetine, sertraline, and venlafaxine. *Journal of Clinical Psychiatry*, **61**, 276–281.
- Kyle, C. J., Petersen, H. E. H. & Overø, K. F. (1998)** Comparison of the tolerability and efficacy of citalopram and amitriptyline in elderly depressed patients treated in general practice. *Depression and Anxiety*, **8**, 147–153.
- Montgomery, S. A. (1994)** Clinically relevant effect sizes in depression. *European Neuropsychopharmacology*, **4**, 283–284.
- & Åsberg, M. (1979)** A new depression scale designed to be sensitive to change. *British Journal of Psychiatry*, **134**, 382–389.
- , Dufour, H., Brion, S., et al (1988)** The prophylactic efficacy of fluoxetine in unipolar depression. *British Journal of Psychiatry*, **153** (suppl. 3), 69–76.
- Noble, S. & Benfield, P. (1997)** Citalopram. A review of its pharmacology, clinical efficacy and tolerability in the treatment of depression. *CNS Drugs*, **8**, 410–431.
- Pollock, B. G. (1999)** Adverse reactions of antidepressants in elderly patients. *Journal of Clinical Psychiatry*, **60**, 4–8.
- Quitkin, F. M. (1992)** Methodology of measuring the efficacy of antidepressants. *Psychopharmacology*, **106**, S87–S89.
- Reynolds, C. F. III, Frank, E. & Perel, J. M. (1994)** Maintenance therapies in late-life depression. *Neuropsychopharmacology*, **10**, 61S.
- , —, Kupfer, D. J., et al (1996)** Treatment outcome in recurrent major depression: A post hoc comparison of elderly (“young old”) and mid-life patients. *American Journal of Psychiatry*, **153**, 1288–1292.
- , —, Perel, J. M., et al (1999)** Nortriptyline and interpersonal psychotherapy as maintenance therapies for recurrent major depression: a randomized controlled trial in patients older than 59 years. *JAMA*, **281**, 39–45.
- Robert, P. & Montgomery, S. A. (1995)** Citalopram in doses of 20–60 mg is effective in depression relapse prevention: a placebo-controlled 6 month study. *International Clinical Psychopharmacology*, **10**, 29–35.
- SAS Institute Inc. (1997)** SAS/STAT Software: Changes and Enhancements through Release 6.12. 1167 pp.
- Small, G. W. (1998)** Treatment of geriatric depression. *Depression and Anxiety*, **8**, 32–42.
- Zajacka, J., Amsterdam, J. D., Quitkin, F. M., et al (1999)** Changes in adverse events reported by patients during 6 months of fluoxetine therapy. *Journal of Clinical Psychiatry*, **60**, 389–394.