

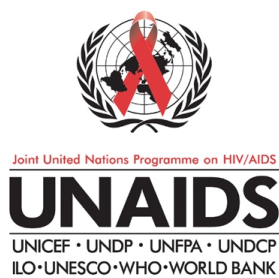
Panama

Epidemiological Fact Sheets

on HIV/AIDS
and Sexually
Transmitted
Infections



2002 Update



Estimated number of people living with HIV/AIDS

In 2001 and during the first quarter of 2002, UNAIDS and WHO worked closely with national governments and research institutions to recalculate current estimates on people living with HIV/AIDS. These calculations are based on the previously published estimates for 1997 and 1999 and recent trends in HIV/AIDS surveillance in various populations. A methodology developed in collaboration with an international group of experts was used to calculate the new estimates on prevalence and incidence of HIV and AIDS deaths, as well as the number of children infected through mother-to-child transmission of HIV. Different approaches were used to estimate HIV prevalence in countries with low-level, concentrated or generalized epidemics. The current estimates do not claim to be an exact count of infections. Rather, they use a methodology that has thus far proved accurate in producing estimates which give a good indication of the magnitude of the epidemic in individual countries. However, these estimates are constantly being revised as countries improve their surveillance systems and collect more information.

Adults in this report are defined as women and men aged 15 to 49. This age range covers people in their most sexually active years. While the risk of HIV infection obviously continues beyond the age of 50, the vast majority of those who engage in substantial risk behaviours are likely to be infected by this age. The 15 to 49 range was used as the denominator in calculating adult HIV prevalence.

■ Estimated number of adults and children living with HIV/AIDS, end of 2001

These estimates include all people with HIV infection, whether or not they have developed symptoms of AIDS, alive at the end of 2001:

Adults and children	25,000		
Adults (15-49)	25,000	Adult rate (%)	1.5
Women (15-49)	8,700		
Children (0-15)	800		

■ Estimated number of deaths due to AIDS

Estimated number of adults and children who died of AIDS during 2001:

Deaths in 2001	1,900
-----------------------	--------------

■ Estimated number of orphans

Estimated number of children who have lost their mother or father or both parents to AIDS and who were alive and under age 15 at the end of 2001:

Current living orphans	8,100
-------------------------------	--------------

UNAIDS/WHO Working Group on Global HIV/AIDS and STI Surveillance

Global Surveillance of HIV/AIDS and sexually transmitted infections (STIs) is a joint effort of WHO and UNAIDS. The UNAIDS/WHO Working Group on Global HIV/AIDS and STI Surveillance, initiated in November 1996, guides respective activities. The primary objective of the Working Group is to strengthen national, regional and global structures and networks for improved monitoring and surveillance of HIV/AIDS and STIs. For this purpose, the Working Group collaborates closely with national AIDS programmes and a number of national and international experts and institutions. The goal of this collaboration is to compile the best information available and to improve the quality of data needed for informed decision-making and planning at national, regional, and global levels. The Epidemiological Fact Sheets are one of the products of this close and fruitful collaboration across the globe.

Within this framework, the Fact Sheets collate the most recent country-specific data on HIV/AIDS prevalence and incidence, together with information on behaviours (e.g. casual sex and condom use) which can spur or stem the transmission of HIV.

Not unexpectedly, information on all of the agreed-upon indicators was not available for many countries in 2001. However, these updated Fact Sheets do contain a wealth of information which allows identification of strengths in currently existing programmes and comparisons between countries and regions. The Fact Sheets may also be instrumental in identifying potential partners when planning and implementing improved surveillance systems.

The fact sheets can be only as good as information made available to the UNAIDS/WHO Working Group on Global HIV/AIDS and STI Surveillance. Therefore, the Working Group would like to encourage all programme managers as well as national and international experts to communicate additional information to them whenever such information becomes available. The Working Group also welcomes any suggestions for additional indicators or information proven to be useful in national or international decision-making and planning.

Assessment of the epidemiological situation (2002)

Preliminary data from the Republic of Panama showed that between September 1984 and December 31, 2001, the cumulative number of reported AIDS cases reached 4,389. Of those 3,344 (76%) were men and 1,045 (24%) in women. The male-to-female ratio was 6:1 during the period 1984-1989, 4:1 during 1990-1994, and 3:1 during 1995-1999 as well as 2000-2001.

79% of the cases are among those aged 20 to 49 years. The under 20 age group represented 6% of cases and those older than 49 years, 15.0%.

The predominant mode of transmission in the country was sexual contact, with heterosexual transmission accounting for 45% of the AIDS cases. Among children less than 15 years of age, 71.6% (188) of the cases are associated with mother-to-child transmission; it should be highlighted that 66.2% of these cases have been reported in the last 5 years.

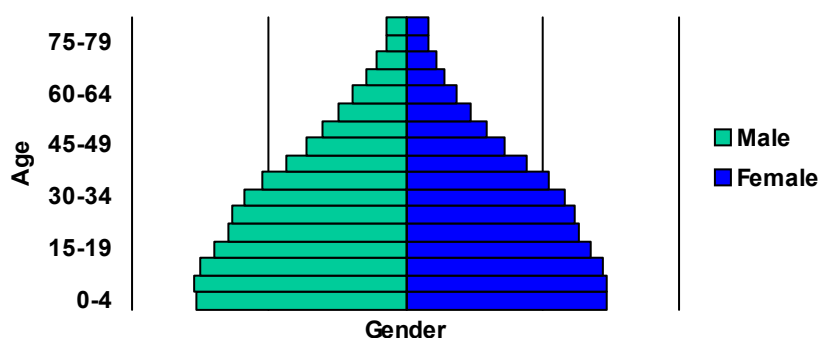
The epidemic is geographically located in three of the principal provinces: Panama, with 3,321 cases (76%), Colon, 597 cases (14%), and 200 cases (5%) in Chiriqui.

The AIDS case-fatality rate was 73%. The majority of deaths (77.6%) of deaths were among males. The 20-49 year age group was the most affected with 80% of deaths.

There were no new HIV prevalence or sentinel studies conducted since the last assessment; therefore HIV data remains the same as for previous years.

Country Information

Population pyramid, 2001



Indicators	Year	Estimate	Source
Total Population (thousands)	2001	2,899	UNPOP
Population Aged 15-49 (thousands)	2001	1,549	UNPOP
Annual Population Growth	1995-2000	1.6	UNPOP
% of Urban Population	2000	56	UNPOP
Average Annual Growth Rate of Urban Population	1995-2000	2.1	UNPOP
GNI Per Capita (US\$)	1999	3,080	World Bank
GNI Per Capita Average Annual Growth Rate	1999	-0.4	World Bank
Per Capita Expenditure of Health	1998	246	World Bank
% of Government Budget Spent on Health Care	1998	18.5	WHO
Total Adult Literacy Rate	1997	91	UNESCO
Adult Male Literacy Rate	1997	92	UNESCO
Adult Female Literacy Rate	1997	91	UNESCO
Male Primary School Enrolment Ratio	1990	108.3	UNESCO
Female Primary School Enrolment Ratio	1990	104.1	UNESCO
Male Secondary School Enrolment Ratio	1990	60.5	UNESCO
Female Secondary School Enrolment Ratio	1990	64.7	UNESCO
Crude Birth Rate (births per 1,000 pop.)	1995-2000	23	UNPOP
Crude Death Rate (deaths per 1,000 pop.)	1995-2000	5	UNPOP
Maternal Mortality Rate (per 100,000 live births)	1995	100	WHO
Life Expectancy at Birth	1995-2000	74	UNPOP
Total Fertility Rate	1995-2000	2.6	UNPOP
Infant Mortality Rate (per 1,000 live births)	1995-2000	21	UNPOP
Under 5 Mortality Rate	1995-2000	24	UNPOP

For consistency reasons the data used in the above table are taken from official UN publications.

Contact address:

UNAIDS/WHO Working Group on Global HIV/AIDS
and STI Surveillance
20, Avenue Appia
CH - 1211 Geneva 27
Switzerland
Fax: +41-22-791-4834

email: HIV-AIDS@who.int

<http://www.who.int>
<http://www.unaids.org>

4 - Panama

HIV prevalence in different populations

This section contains information about HIV prevalence in different populations. The data reported in the tables below are mainly based on the HIV database maintained by the United States Bureau of the Census where data from different sources, including national reports, scientific publications and international conferences are compiled. To provide a simple overview of the current situation and trends over time, summary data are given by population group, geographical area (Major Urban Areas versus Outside Major Urban Areas), and year of survey. Studies conducted in the same year are aggregated and the median prevalence rates (in percentages) are given for each of the categories. The maximum and minimum prevalence rates observed, as well as the total number of surveys/sentinel sites, are provided with the median, to give an overview of the diversity of HIV-prevalence results in a given population within the country. Data by sentinel site or specific study from which the medians were calculated are printed at the end of this fact sheet.

The differentiation between the two geographical areas Major Urban Areas and Outside Major Urban Areas is not based on strict criteria, such as the number of inhabitants. For most countries, Major Urban Areas were considered to be the capital city and - where applicable - other metropolitan areas with similar socio-economic patterns. The term Outside Major Urban Areas considers that most sentinel sites are not located in strictly rural areas, even if they are located in somewhat rural districts.

■ HIV sentinel surveillance

Group	Area		1987	1988	1989	1990	1991	1992	1993	1994	1995	1996	1997	1998	1999	2000	2001	
Pregnant women	Major Urban Areas	N-sites							1	1								
		Minimum							0.7	0.3								
		Median							0.7	0.3								
		Maximum							0.7	0.3								
	Outside Major Urban Areas	N-sites								1	1	1	4	1				
		Minimum								0.8	0.2	0.9	0	0.9				
		Median								0.8	0.2	0.9	0	0.9				
		Maximum								0.8	0.2	0.9	0.5	0.9				

Group	Area		1987	1988	1989	1990	1991	1992	1993	1994	1995	1996	1997	1998	1999	2000	2001	
Sex workers	Major Urban Areas	N-sites																
		Minimum																
		Median																
		Maximum																
	Outside Major Urban Areas	N-sites						1	1	1	1	1	1	1				
		Minimum						0.9	0.6	0.2	0.5	0.3	0.3					
		Median						0.9	0.6	0.2	0.5	0.3	0.3					
		Maximum						0.9	0.6	0.2	0.5	0.3	0.3					

Group	Area		1987	1988	1989	1990	1991	1992	1993	1994	1995	1996	1997	1998	1999	2000	2001
-------	------	--	------	------	------	------	------	------	------	------	------	------	------	------	------	------	------

Injecting drug users

Group	Area		1987	1988	1989	1990	1991	1992	1993	1994	1995	1996	1997	1998	1999	2000	2001
-------	------	--	------	------	------	------	------	------	------	------	------	------	------	------	------	------	------

STI patients,
Males/both & females

Group	Area		1987	1988	1989	1990	1991	1992	1993	1994	1995	1996	1997	1998	1999	2000	2001
-------	------	--	------	------	------	------	------	------	------	------	------	------	------	------	------	------	------

Men who have sex with men	Major Urban Areas	N-sites																
		Minimum																
		Median																
		Maximum																
Outside Major Urban Areas	N-sites																	
	Minimum																	
	Median																	
	Maximum																	

■ Additional data

Group	Area		1987	1988	1989	1990	1991	1992	1993	1994	1995	1996	1997	1998	1999	2000	2001
Blood donors			0.08	0.13	0.2	0.05	0.06	0.12	0.07	0.1	0.12	0.06	0.07	0.09	0.09	0.1	0.1

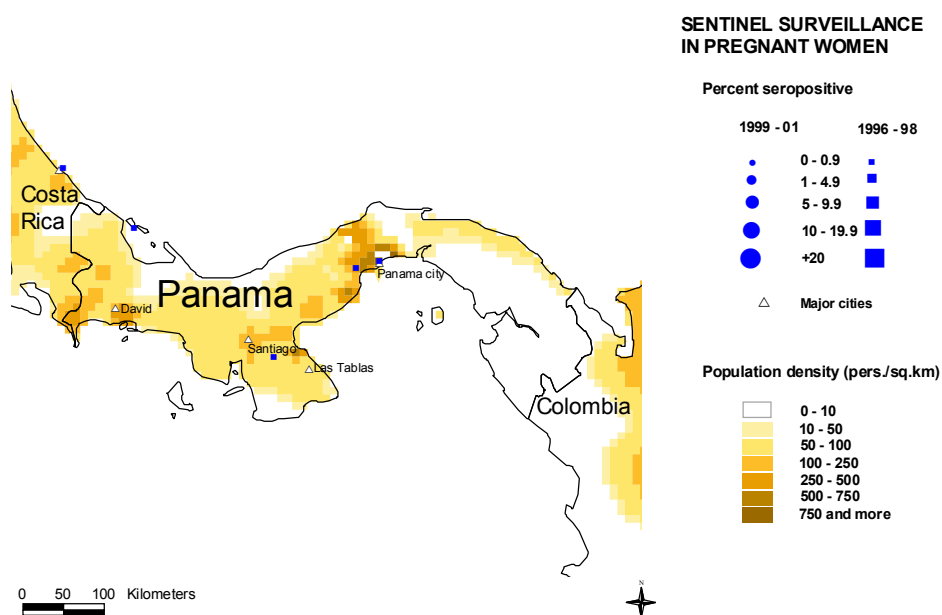
Group	Area		1987	1988	1989	1990	1991	1992	1993	1994	1995	1996	1997	1998	1999	2000	2001
-------	------	--	------	------	------	------	------	------	------	------	------	------	------	------	------	------	------

Tuberculosis patients														6.9	7.4	8.3	8.2
-----------------------	--	--	--	--	--	--	--	--	--	--	--	--	--	-----	-----	-----	-----

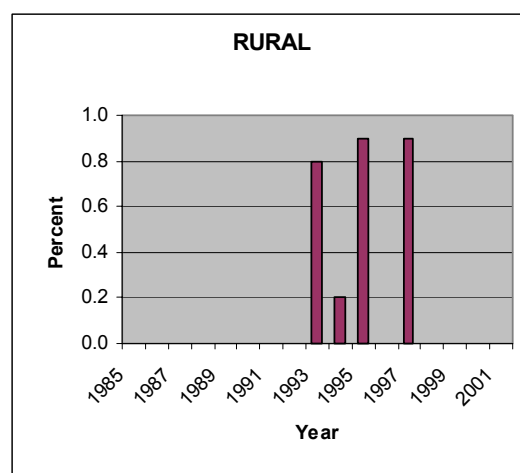
Maps of HIV sentinel sites

Mapping the geographical distribution of HIV sentinel sites for different population groups may assist in interpreting both the national coverage of the HIV surveillance system as well in explaining differences in levels and trends of prevalence. The UNAIDS/WHO Working Group on Global HIV/AIDS and STI Surveillance, in collaboration with the WHO Public Health Mapping Team, Communicable Diseases, is producing maps showing the location and HIV prevalence of HIV sentinel sites in relation to population density, major urban areas and communication routes.

Trends in antenatal sentinel surveillance for higher prevalence countries, or in prevalence among selected populations for countries with concentrated epidemics, are a new addition. These will be presented for those countries where sufficient data exist.



Trends in HIV prevalence among antenatal clinic attendees



Median prevalence and ranges are shown in areas with more than one sentinel site.

The boundaries and names shown and the designations used on the map do not imply the expression of any opinion whatsoever on the part of the World Health Organization concerning the legal status of any country, territory, city or area or of its authorities, or concerning the delimitation of its frontiers or boundaries. Dotted lines on maps represent approximate border lines for which there may not yet be full agreement.
WHO 2002, all rights reserved.

6 - Panama

Reported AIDS cases

AIDS cases by year of reporting

1979	1980	1981	1982	1983	1984	1985	1986	1987	1988	1989	1990	1991	1992	1993	1994	1995	1996	1997	1998	1999	2000
					6	6	18	31	64	80	73	90	118	204	289	344	380	463	563	534	263

2001 Total Unk

453	3979	
-----	------	--

Date of last report: 16-May-2002

Following WHO and UNAIDS recommendations, AIDS case reporting is carried out in most countries. Data from individual AIDS cases are aggregated at the national level and sent to WHO. However, case reports come from surveillance systems of varying quality. Reporting rates vary substantially from country to country and low reporting rates are common in developing countries due to weaknesses in the health care and epidemiological systems. In addition, countries use different AIDS case definitions. A main disadvantage of AIDS case reporting is that it only provides information on transmission patterns and levels of infection approximately 5-10 years in the past, limiting its usefulness for monitoring recent HIV infections.

Despite these caveats, AIDS case reporting remains an important advocacy tool and is useful in estimating the burden of HIV-related morbidity as well as for short-term planning of health care services. AIDS case reports also provide information on the demographic and geographic characteristics of the affected population and on the relative importance of the various exposure risks. In some situations, AIDS reports can be used to estimate earlier HIV infection patterns using back-calculation. AIDS case reports and AIDS deaths have been dramatically reduced in industrialized countries with the introduction of HAART (Highly Active Anti-Retroviral Therapy).

AIDS cases by mode of transmission

Hetero: Heterosexual contacts.

Homo/Bi: Homosexual contacts between men.

IDU: Injecting drug use. This transmission category also includes cases in which other high-risk behaviours were reported, in addition to injection of drugs.

Blood: Blood and blood products.

Perinatal: Vertical transmission during pregnancy, birth or breastfeeding.

NS: Not specified/unknown.

Sex	Trans. Group	<97	1997	1998	1999	2000	2001	Unkn.	Total	%
All	All	465	564	535	259				3529	100.0
	Hetero	226	204	341	171				1586	44.9
	Homo/Bi	78	93	97	45				815	23.1
	IDU	17	10	10	6				101	2.9
	Blood	3	2	0	0				34	1.0
	Perinatal	23	20	24	20				152	4.3
	Other knowr	0	0	0	0				1	0.0
	Unknown	118	235	63	17				840	23.8
Male	All	337	433	386	180				2696	100.0
	Hetero	148	143	219	107				1053	39.1
	Homo/Bi	78	93	97	45				815	30.2
	IDU	15	6	7	5				89	3.3
	Blood	1	2	0	0				20	0.7
	Perinatal	11	12	10	10				72	2.7
	Other knowr	0	0	0	0				1	0.0
	Unknown	84	177	53	13				646	24.0
Female	All	128	131	149	79				833	100.0
	Hetero	78	61	122	64				533	64.0
	IDU	2	4	3	1				12	1.4
	Blood	2	0	0	0				14	1.7
	Perinatal	12	8	14	10				80	9.6
	Other knowr	0	0	0	0				0	0.0
	Unknown	34	58	10	4				194	23.3
	NS	All	0	0	0	0				0
Hetero		0	0	0	0				0	
IDU		0	0	0	0				0	
Blood		0	0	0	0				0	
Perinatal		0	0	0	0				0	
Other knowr		0	0	0	0				0	
Unknown		0	0	0	0				0	

AIDS cases by age and sex

Sex	Age	<97	1997	1998	1999	2000	2001	Unkn.	Total	%
All	All	1696	466	544	680	550	453		4389	100.0
	0-4	57	20	15	20	25	22		159	3.6
	5-9	12	7	7	5	5	3		39	0.9
	10-14	2	0	1	3	2	1		9	0.2
	15-19	24	7	7	7	8	4		57	1.3
	20-24	162	24	34	48	27	17		312	7.1
	25-29	256	58	85	87	61	77		624	14.2
	30-34	377	92	116	138	110	80		913	20.8
	35-39	248	67	72	114	97	81		679	15.5
	40-44	189	60	81	84	71	72		557	12.7
	45-49	148	47	45	76	41	28		385	8.8
	50-54	83	31	37	43	43	27		264	6.0
	55-59	48	19	18	21	27	29		162	3.7
	60+	69	34	25	33	30	21		212	4.8
NS		8	2	1	1	3	2		17	0.4
Male	All	1351	338	416	495	401	343		3344	100.0
	0-4	25	10	10	8	14	13		80	2.4
	5-9	4	2	3	2	2	3		16	0.5
	10-14	1	0	1	2	1	0		5	0.1
	15-19	16	4	5	5	3	2		35	1.0
	20-24	110	14	15	32	16	12		199	6.0
	25-29	204	39	66	57	51	52		469	14.0
	30-34	315	70	97	96	75	63		716	21.4
	35-39	201	44	56	90	66	57		514	15.4
	40-44	157	47	64	68	53	48		437	13.1
	45-49	130	42	37	59	30	22		320	9.6
	50-54	75	21	31	33	35	23		218	6.5
	55-59	42	15	13	15	26	26		137	4.1
	60+	63	28	17	27	27	20		182	5.4
NS		8	2	1	1	2	2		16	0.5
Female	All	345	128	128	185	149	110		1045	100.0
	0-4	32	10	5	12	11	9		79	7.6
	5-9	8	5	4	3	3	0		23	2.2
	10-14	1	0	0	1	1	1		4	0.4
	15-19	8	3	2	2	5	2		22	2.1
	20-24	52	10	19	16	11	5		113	10.8
	25-29	55	17	19	30	10	24		155	14.8
	30-34	62	22	19	42	35	17		197	18.9
	35-39	47	23	16	24	31	24		165	15.8
	40-44	52	13	17	16	18	14		120	11.5
	45-49	18	5	8	17	11	6		65	6.2
	50-54	8	10	6	10	8	4		46	4.4
	55-59	6	4	5	6	1	3		25	2.4
	60+	6	6	8	6	3	1		30	2.9
NS		0	0	0	0	1	0		1	0.1
NS	All	0	0	0	0	0	0		0	
	0-4	0	0	0	0	0	0		0	
	5-9	0	0	0	0	0	0		0	
	10-14	0	0	0	0	0	0		0	
	15-19	0	0	0	0	0	0		0	
	20-24	0	0	0	0	0	0		0	
	25-29	0	0	0	0	0	0		0	
	30-34	0	0	0	0	0	0		0	
	35-39	0	0	0	0	0	0		0	
	40-44	0	0	0	0	0	0		0	
	45-49	0	0	0	0	0	0		0	
	50-54	0	0	0	0	0	0		0	
	55-59	0	0	0	0	0	0		0	
	60+	0	0	0	0	0	0		0	
NS		0	0	0	0	0		0		

Curable Sexually Transmitted Infections (STIs)

The predominant mode of transmission of both HIV and other STIs is sexual intercourse. Measures for preventing sexual transmission of HIV and STI are the same, as are the target audiences for interventions. In addition, strong evidence supports several biological mechanisms through which STI facilitate HIV transmission by increasing both HIV infectiousness and HIV susceptibility. Also significant is the observation of a sharp decline in the concentration of HIV in genital secretions when the infection is treated. Monitoring trends in STI can provide valuable information on the sexual transmission of HIV as well as the impact of behavioural interventions, such as promotion of condom use.

Clinical services offering STI care are an important access point for people at high risk for both AIDS and STIs, not only for diagnosis and treatment but also for information and education. Therefore, control and prevention of STIs have been recognized as a major strategy in the prevention of HIV infection and ultimately AIDS. One of the cornerstones of STI control is adequate management of patients with symptomatic STIs. This includes diagnosis, treatment and individual health education and counselling on disease prevention and partner notification. Consequently, monitoring different components of STI control can also provide information on HIV prevention within a country.

■ Reported STI syndromes

Syndrome	1990	1991	1992	1993	1994	1995	1996	1997	1998	1999	2000	2001	Total	Unk
Urethral discharge														
Genital Ulcer														
Vaginal discharge														
Lower Abdominal Pain														
Neonatal conjunctivitis														

Date of last report:

■ Incidence of urethral discharge, men

Year	Area	Age Group	Rate	N=

Comments:

Sources:

■ Syphilis prevalence, women

Percent of blood samples taken from women aged 15-24 that test positive for syphilis during routine screening at selected antenatal clinics.

Year	Area	Age Group	Rate	N=

Comments:

Sources:

8 - Panama

Estimated size of populations at increased risk of HIV infection

	Year	Area	High estimate	Low estimate
Number of female sex workers				
Number of injecting drug users				
Number of men who have sex with men				

Comments:

Sources:

Health service and care indicators

HIV prevention strategies depend on the twin efforts of care and support for those living with HIV or AIDS, and targeted prevention for all people at risk or vulnerable to the infection. It is difficult to capture such a large range of activities with one or just a few indicators. However, a set of well-established health care indicators may help to identify general strengths and weaknesses of health systems. Specific indicators, such as access to testing and blood screening for HIV, help to measure the capacity of health services to respond to HIV/AIDS - related issues.

■ Access to health care

Indicators	Year	Estimate	Source
% of population with access to health services - total:	2001	80	ONU
% of population with access to health services - urban:			
% of population with access to health services - rural:			
Contraceptive prevalence rate (%):	1984	58.2	UNICEF/UNPOP
Percentage of contraceptive users using condoms:			
% of births attended by skilled health personnel:	1998	90	WHO
% of 1-yr-old children fully immunized - DPT:	2000	98.2	WHO/UNICEF
% of 1-yr-old children fully immunized - Measles:	2000	96.7	WHO/UNICEF
% of ANC clinics where HIV testing is available:			
% of PLWHA who have access to ARV:			

■ Number of people living with HIV/AIDS (PLWHA) receiving highly active antiretroviral therapy (HAART)

	1995	1996	1997	1998	1999	2000	2001	Total	Unk
People initiating HAART therapy					10	400	444	854	

■ Coverage of HIV Voluntary Counselling and Testing (VCT)

Number of functioning VCT sites per 100,000 population aged 15-49.

Year	Area	N=	Rate

Comments:

Sources:

Knowledge and behaviour

In most countries the HIV epidemic is driven by behaviours (e.g.: multiple sexual partners, injecting drug use) that expose individuals to the risk of infection. Information on knowledge and on the level and intensity of risk behaviour related to HIV/AIDS is essential in identifying populations most at risk for HIV infection and in better understanding the dynamics of the epidemic. It is also critical information in assessing changes over time as a result of prevention efforts. One of the main goals of the 2nd generation HIV surveillance systems is the promotion of a standard set of indicators defined in the National Guide (Source: National AIDS Programmes, A Guide to Monitoring and Evaluation, UNAIDS/00.17) and regular behavioural surveys in order to monitor trends in behaviours and to target interventions.

The indicators on knowledge and misconceptions are an important prerequisite for prevention programmes to focus on increasing people's knowledge about sexual transmission, and, to overcome the misconceptions that act as a disincentive to behaviour change. Indicators on sexual behaviour and the promotion of safer sexual behaviour are at the core of AIDS programmes, particularly with young people who are not yet sexually active or are embarking on their sexual lives, and who are more amenable to behavioural change than adults. Finally, higher risk male-male sex reports on unprotected anal intercourse, the highest risk behaviour for HIV among men who have sex with men.

■ **Knowledge of HIV prevention methods**

Proportion of people citing correctly at least two acceptable ways of protection from HIV infection.

Year	Area	Age Group	Male	Female	All
1999	Urban	14-20			26

Comments: No se cuenta con la información por sexo.

Sources: Investigación sobre conocimientos, actitudes y prácticas en ETS, VIH/SIDA en adolescentes escolares de la Provincia de Panamá. APLAFA, Panamá, 1997. Hilda Martínez de Jaime.

■ **Misconception about AIDS (no incorrect beliefs)**

Proportion of people who correctly reject the two most common local misconceptions about AIDS transmission or prevention, and who know that a healthy looking person can transmit AIDS

Year	Area	Age Group	Male	Female	All

Comments:

Sources:

■ **Median age at first sexual experience**

The age by which one half of young men or young women aged 15-24 have had penetrative sex (median age) of all young people surveyed.

Year	Area	Age Group	Male	Female	All
1999	Urban	14-20	15	13	

Comments:

Sources: Investigación sobre conocimientos, actitudes y prácticas en ETS, VIH/SIDA en adolescentes escolares de la Provincia de Panamá. APLAFA, Panamá, 1997. Hilda Martínez de Jaime.

■ **Higher risk sex in the last year (adults)**

Proportion of adult respondents who have had sex with a non-regular (non-marital, non-cohabiting) partner in the last 12 months, of all adult respondents reporting sexual activity in the last 12 months.

Year	Area	Age Group	Male	Female	All

Comments:

Sources:

■ **Young people having multiple partners in last year (youth)**

Proportion of respondents who have had sex with more than one partner in the last 12 months.

Year	Area	Age Group	Male	Female	All

Comments:

Sources:

Knowledge and behaviour

■ Condom use in last higher risk sex (adults)

The percentage of adult respondents who say they used a condom the last time they had sex with a non-regular (non-marital, non-cohabiting) partner, of those who have had sex with such a partner in the last 12 months.

Year	Area	Age Group	Male	Female	All
------	------	-----------	------	--------	-----

Comments:

Sources:

■ Young people using a condom during premarital sex (youth)

Proportion of young single people who used a condom at last sex.

Year	Area	Age Group	Male	Female	All
------	------	-----------	------	--------	-----

Comments:

Sources:

■ Commercial sex in the last year

Proportion of men reporting sex with a sex worker in the last 12 months.

Year	Area	Age Group	Rate	All
------	------	-----------	------	-----

Comments:

Sources:

■ Reported condom use in commercial sex

Proportion of men reporting condom use the last time they had sex with a sex worker, of those who report having had sex with a sex worker in the last 12 months.

Year	Area	Age Group	Rate	All
------	------	-----------	------	-----

Comments:

Sources:

■ Higher risk male-male sex in the last year

The percentage of men who have had anal sex with more than one male partner in the last 6 months, of all men surveyed who have had sex with a male partner.

Year	Area	Age Group	Rate	All
------	------	-----------	------	-----

Comments:

Sources:

■ Injecting drug users sharing equipment at last injection nationwide

Percentage of injecting drug users active in the last month who report sharing injecting equipment the last time they injected drugs.

Year	Area	Age Group	Rate	All
------	------	-----------	------	-----

Comments:

Sources:

Prevention Indicators

Male and female condoms are the only technology available that can prevent sexual transmission of HIV and other STIs. Persons exposing themselves to the risk of sexual transmission of HIV should have consistent access to high quality condoms. AIDS Programs implement activities to increase both availability of and access to condoms. These activities should be monitored and have resources directed to problem areas. The indicator below highlights the availability of condoms. However, even if condoms are widely available, this does not mean that individuals can or do access them.

■ **Condom availability nationwide**

Total number of condoms available for distribution nationwide during the preceding 12 months, divided by the total population aged 15-49.

Year	N	Rate
------	---	------

Comments:

Sources:

■ **Prevention of mother-to-child transmission (MTCT) nationwide**

Percentage of women who were counselled during antenatal care for their most recent pregnancy, accepted an offer of testing and received their test results, of all women who were pregnant at any time in the preceding two years.

Year	N	Rate
------	---	------

Comments:

Sources:

Blood safety programs aim to ensure that the majority of blood units are screened for HIV and other infectious agents. This indicator gives an idea of the overall percentage of blood units that have been screened to high enough standards that they can confidently be declared free of HIV.

■ **Screening of blood transfusions nationwide**

Percentage of blood units transfused in the last 12 months that have been adequately screened for HIV according to national or WHO guidelines.

Year	N	Rate
2001	42867	100

Comments:

Sources: Ministry of Health.

12 - Panama

Sources

Data presented in this Epidemiological Fact Sheet come from several different sources, including global, regional and country reports, published documents and articles, posters and presentations at international conferences, and estimates produced by UNAIDS, WHO and other United Nations agencies. This section contains a list of the more relevant sources used for the preparation of the Fact Sheet. Where available, it also lists selected national Web sites where additional information on HIV/AIDS and STI are presented and regularly updated. However, UNAIDS and WHO do not warrant that the information in these sites is complete and correct and shall not be liable whatsoever for any damages incurred as a result of their use.

Gladys, A. G. D. 1998 Revision de Estudios de Seroprevalencia del VIH en Panama Informe de Consultoria, PASCA - BUCEN, unpublished document.

Penna, M. 1996 Panama HIV/AIDS Summary Report Sited by Patricio Murgueytio, PASCA, personal memo.

Reeves, W. C., M. Cuevas, J. R. Arosemena, et al. 1988 Human Immunodeficiency Virus Infection in the Republic of Panama American Journal of Tropical Medicine and Hygiene, vol. 39, no., 4, pp. 398-405.

Investigación sobre concocimientos, actitudes y prácticas en ETS, VIH/SIDA en adolescentes escolares de la Provincia de Panamá. APLAFA, Panamá, 1997. Hilda Martínez de Jaime.

Reeves, W.C., M. Cuevas, J.R. Arosemena, et al. 1988 Human Immunodeficiency Virus Infection in the Republic of Panama; American Journal of Tropical Medicine and Hygiene, vol. 39, no. 4, pp 398-405.

Penna, M. 1996; Panama HIV/AIDS Summary Report Sited by Patricio Murgueytio, PASCA, personal memo.

Gladys, A.G.D. 1998; Revision de Estudios de Seroprevalencia del VIH en Panama; Informe de Consultoria, PASCA - BUCEN, unpublished document.

Websites:

13 - Panama

Annex: HIV Surveillance by site

Group	Area		1987	1988	1989	1990	1991	1992	1993	1994	1995	1996	1997	1998	1999	2000	2001	
Pregnant women	Major Urban Areas	Metropolitana region							0.70									
		San Miguelito region								0.30								
	Outside Major Urban Areas	Bocas del Toro region											0.00					
		Chiriqui region								0.80		0.90						
		Colon region									0.20							
		Herrera region											0.00					
		Panama Oeste region											0.50	0.90				
		Panama Prov.											0.00					

Group	Area		1987	1988	1989	1990	1991	1992	1993	1994	1995	1996	1997	1998	1999	2000	2001
Sex workers	Outside Major Urban Areas	Not specified						0.90	0.60	0.20	0.50	0.30	0.30				

Group	Area		1987	1988	1989	1990	1991	1992	1993	1994	1995	1996	1997	1998	1999	2000	2001
Injecting drug users																	

Group	Area		1987	1988	1989	1990	1991	1992	1993	1994	1995	1996	1997	1998	1999	2000	2001
STI patients, Males/both & females																	

Group	Area		1987	1988	1989	1990	1991	1992	1993	1994	1995	1996	1997	1998	1999	2000	2001
Men having sex with men																	

Additional data

Group	Area		1987	1988	1989	1990	1991	1992	1993	1994	1995	1996	1997	1998	1999	2000	2001
Blood donors																	

Group	Area		1987	1988	1989	1990	1991	1992	1993	1994	1995	1996	1997	1998	1999	2000	2001
Tuberculosis patients																	