

The Greater Rape Intervention Project (GRIP)

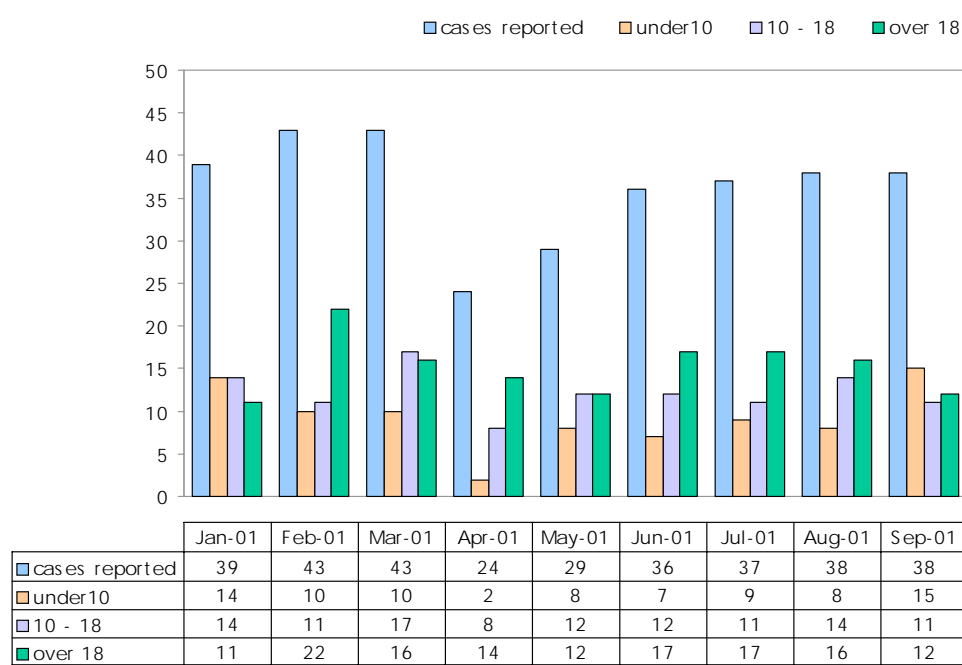
Barbara Kenyon¹, Jennifer Greeff¹ and Michelle Roland, MD²

¹Greater Rape Intervention Project (GRIP), South Africa; ²Positive Health Program, University of California, San Francisco, USA

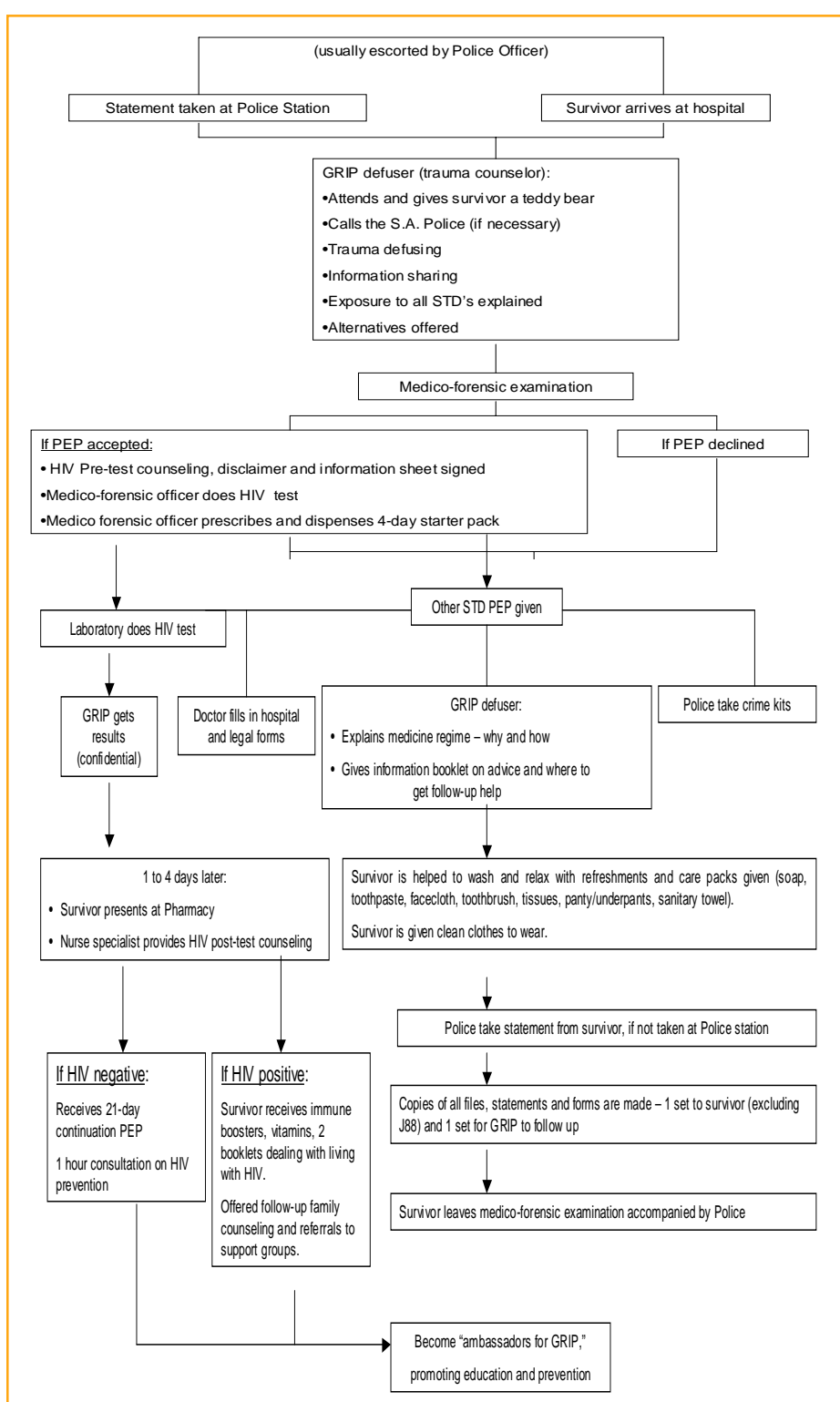
Background

GRIP is a non-profit, community based organisation providing holistic care, counselling and support facilities to the increasing number of rape survivors in the South African province of Mpumalanga by guiding and assisting survivors through the system, including the police, hospitals, social welfare and justice departments

Cases reported: January - September 2001



The Process for the SURVIVOR



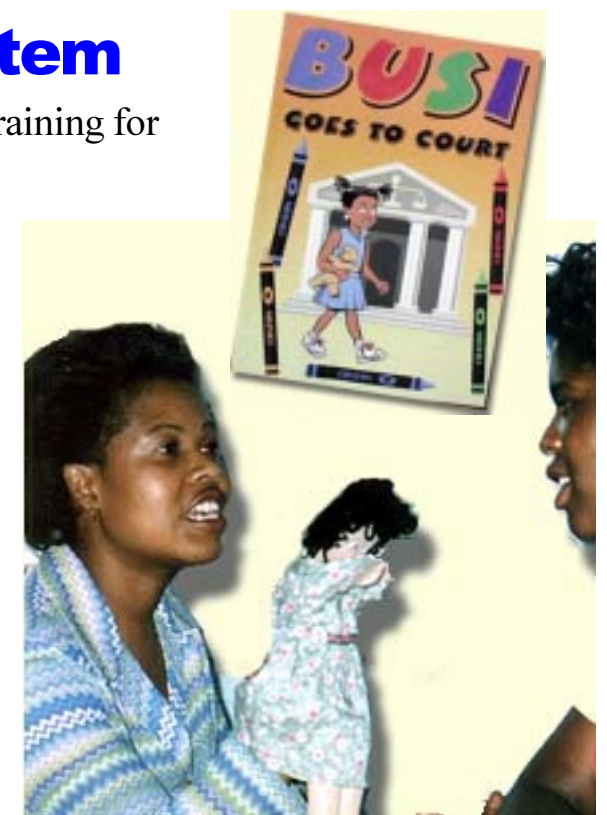
Police System

- Training courses are held with police stations to emphasize correct statement taking, crucial to the judicial outcome of the case.
- GRIP also facilitates training courses for all role-players (police, medical staff and defusers) in all aspects of the criminal justice system.
- Police monitoring of cases has resulted in a staggering identity of 68% of child rape cases, under 10 “being lost” in 2001. Through this intervention GRIP gets cases re-investigated.



Judicial System

- We provide pre-court training for children and would like to extend this to adults, as they are intimidated by the court experience.
- We have set up a room in the court with a “Friend of the Court”, to give advice and refreshments to the children.
- He is our watchdog and reports back any irregularities in the court proceedings.



Court Information 2001: Prosecution Rates are Low

	April	May	Jun	Jul	Aug	Sept	Oct	Nov	Dec
Cases	14	18	24	22	37	19	30	23	28
Postponed	6	7	6	8	23	7	23	12	17
Re-summoned	2		9	2		1	1	1	3
Withdrawn	4	5	3	4	5	2	5	2	
Guilty	1	1	1	1	2	1	1	2	2
Not Guilty	2	3	4	1	5	7	3	2	4
Attorney not present				1	1	2			
Waiting for evidence		1	1		1	1			
Withdrawn - Accused		1		3					
Withdrawn - Survivor							2		
Docket Lost				2					
Court Training		16		42	17		11	11	19

Medical Care

- We have 5 care rooms at various medical centres, manned by “defusers” on a 24 hour, 7-day a week roster.
- Definition of a defuser: A person who works in the hospitals as a trauma counsellor
- If the survivor is HIV-, Mopani Pharmacy’s clinic nurse helps them with their ART medication. Prevention through education is re-enforced to enable rape survivors to be “ambassadors” in their community.
- If the survivor is HIV+, Mopani Pharmacy’s clinic nurse gives advice on how to live “positively” with HIV, and refers for further support



Follow-Up Medical Care and Social Support

Fieldworkers

GRIP has 9 fieldworkers operating in each area. Fieldworkers do follow up 3 months and 6 months finger prick tests to monitor seroconversion, for legal and health reasons. The most important purpose of this intervention is, however, is to check the social circumstances that caused the rape in the first instance. If circumstances are unsatisfactory, GRIP Head Office is notified and acts thereon in conjunction with the Dept. of Social Welfare and the Police.

