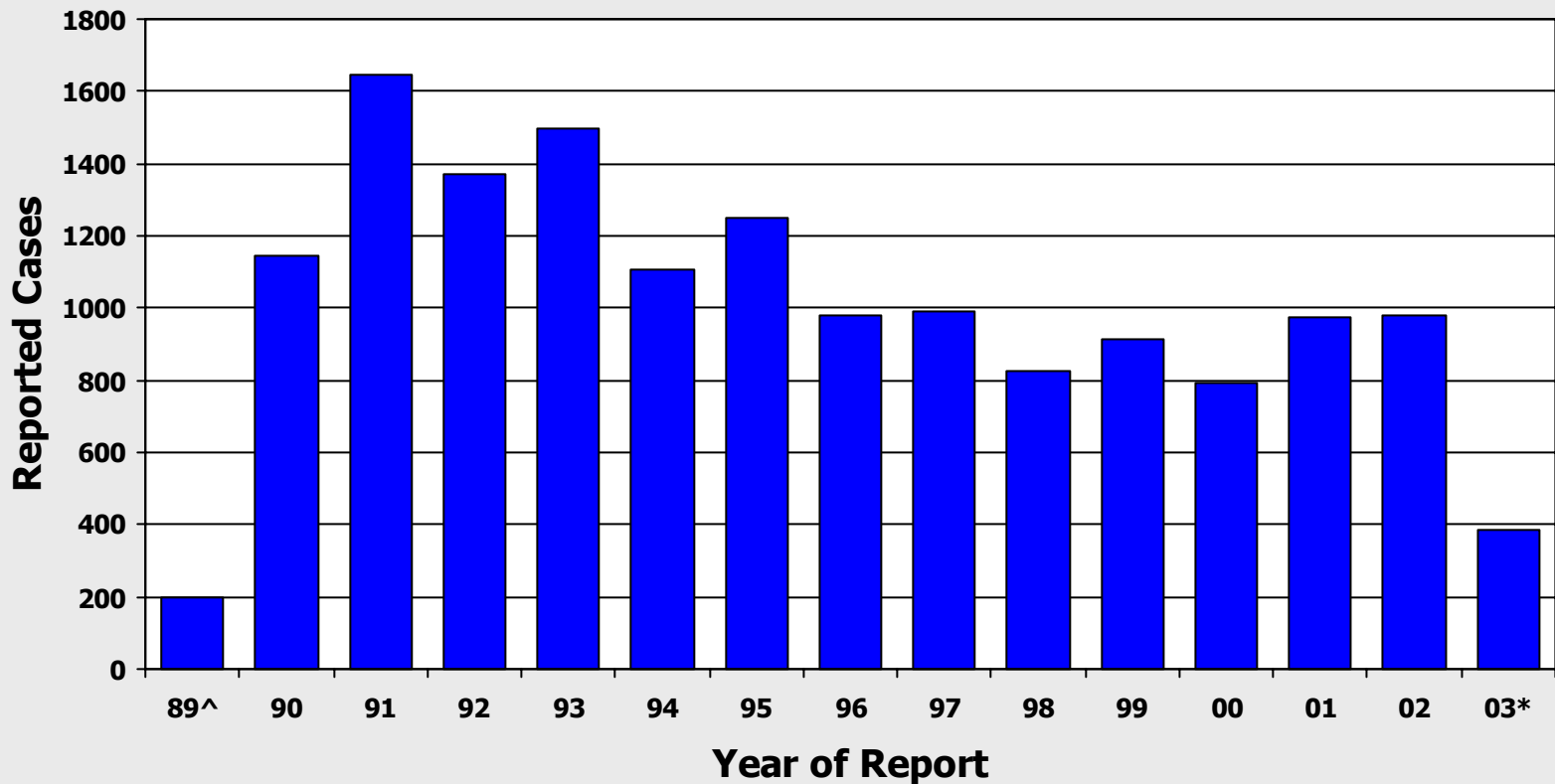


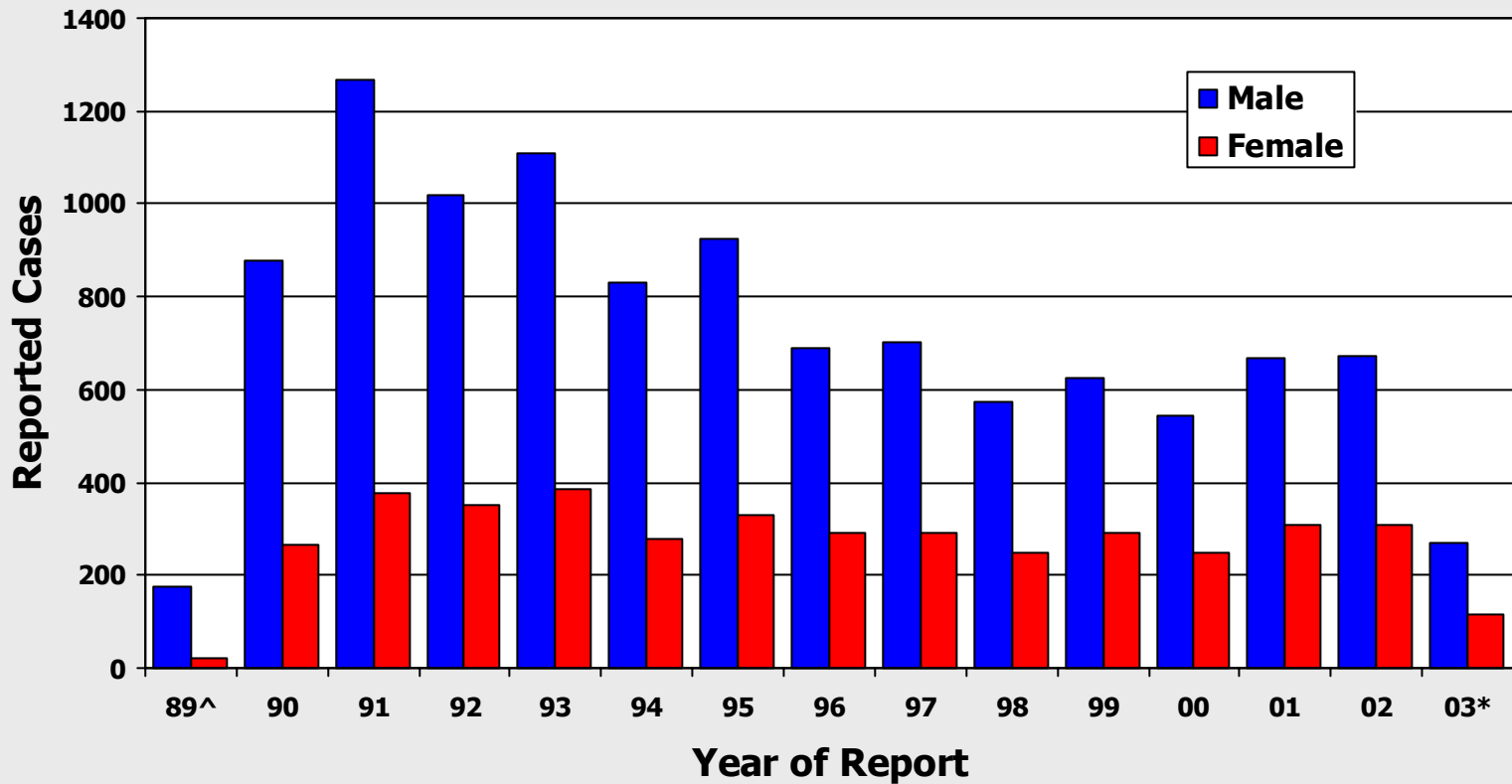
Virginia HIV Cases by Year of Report



^HIV became reportable in July, 1989.

*Data through 6/30/2003.

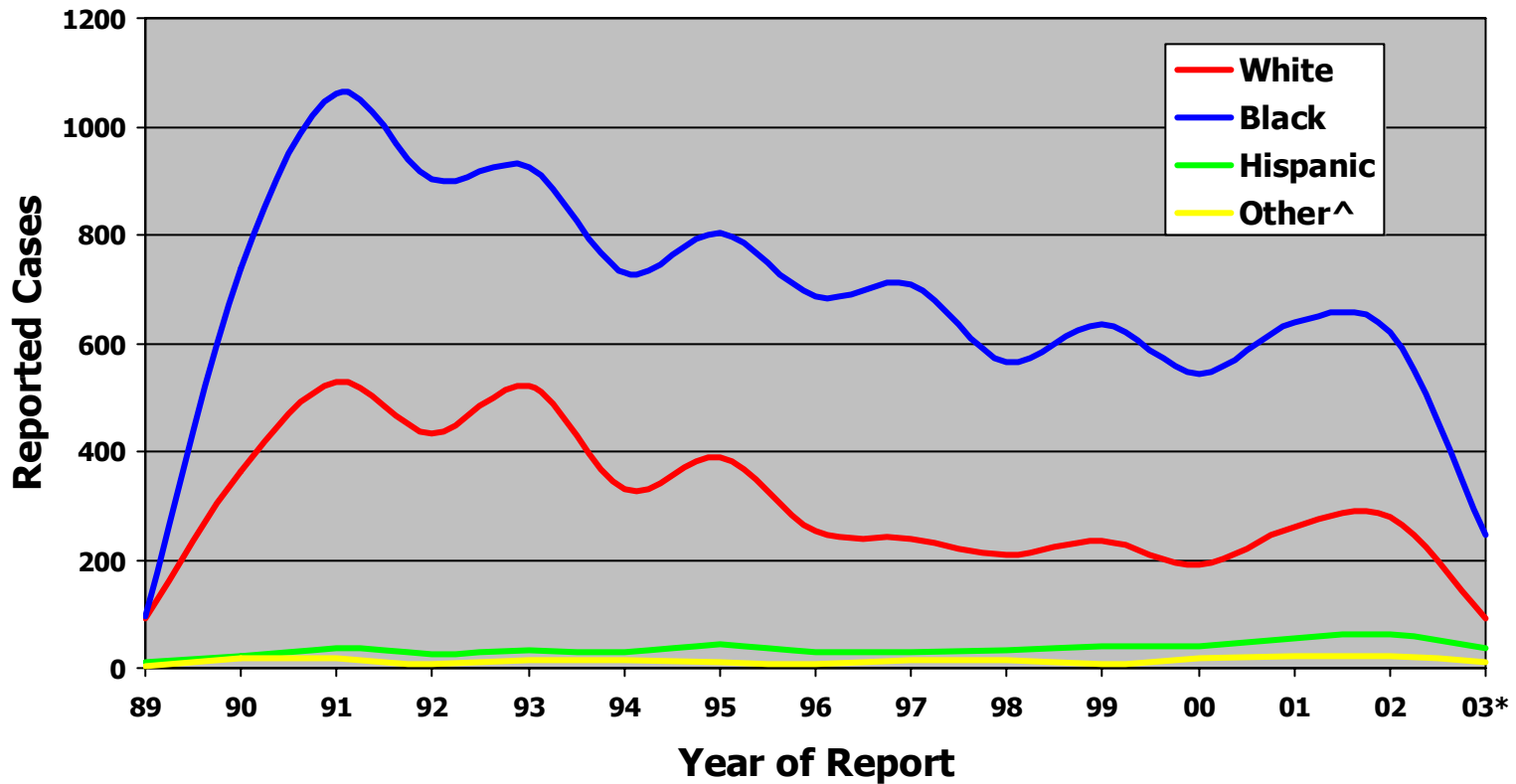
Virginia HIV Cases by Gender



^HIV became reportable in July, 1989.

*Data through 6/30/2003.

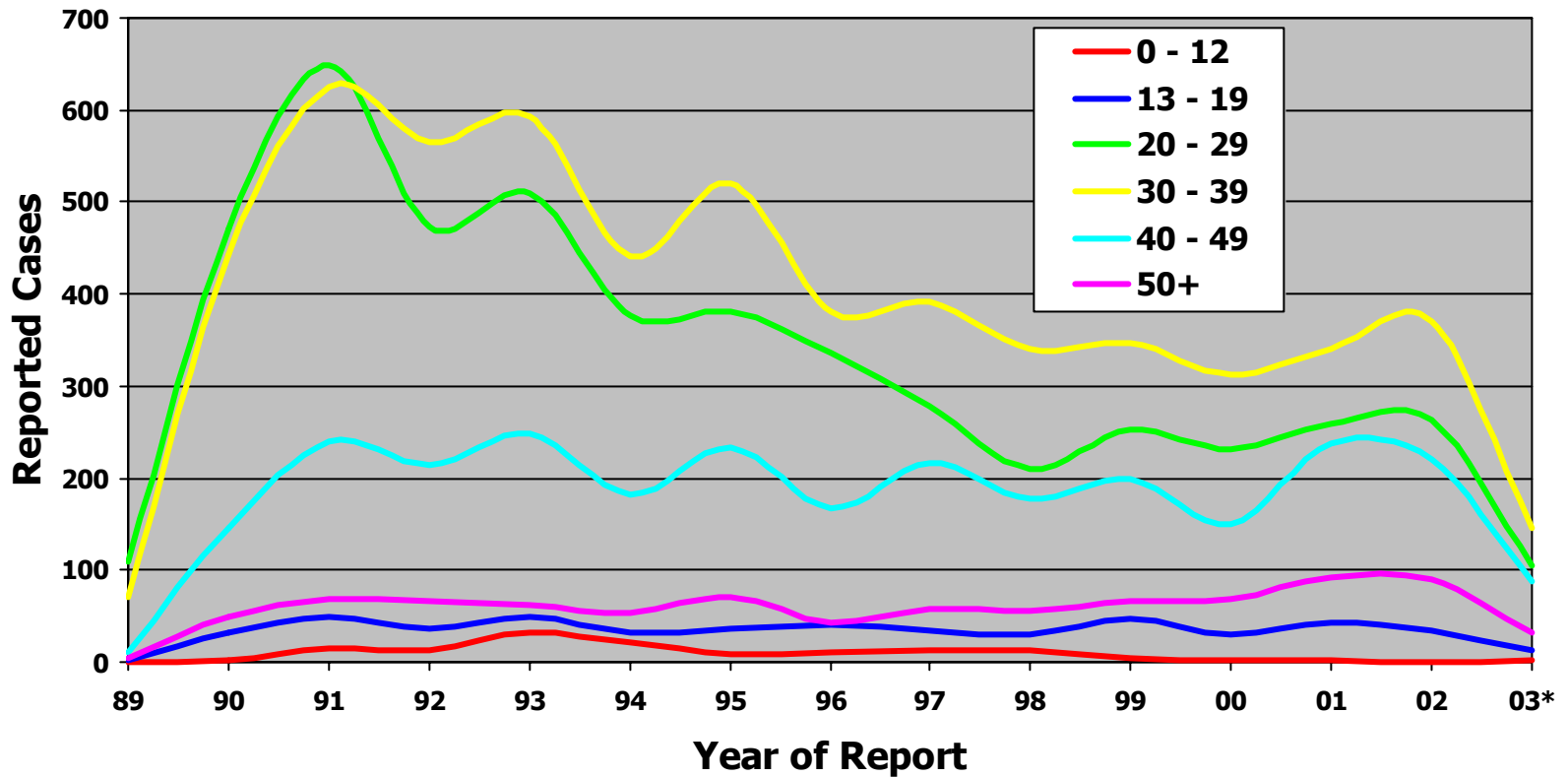
Virginia HIV Cases by Race/Ethnicity



*Data through 6/30/2003.

^Includes Asian/Pacific Islander, American Indian/Alaska Native and Unknown.

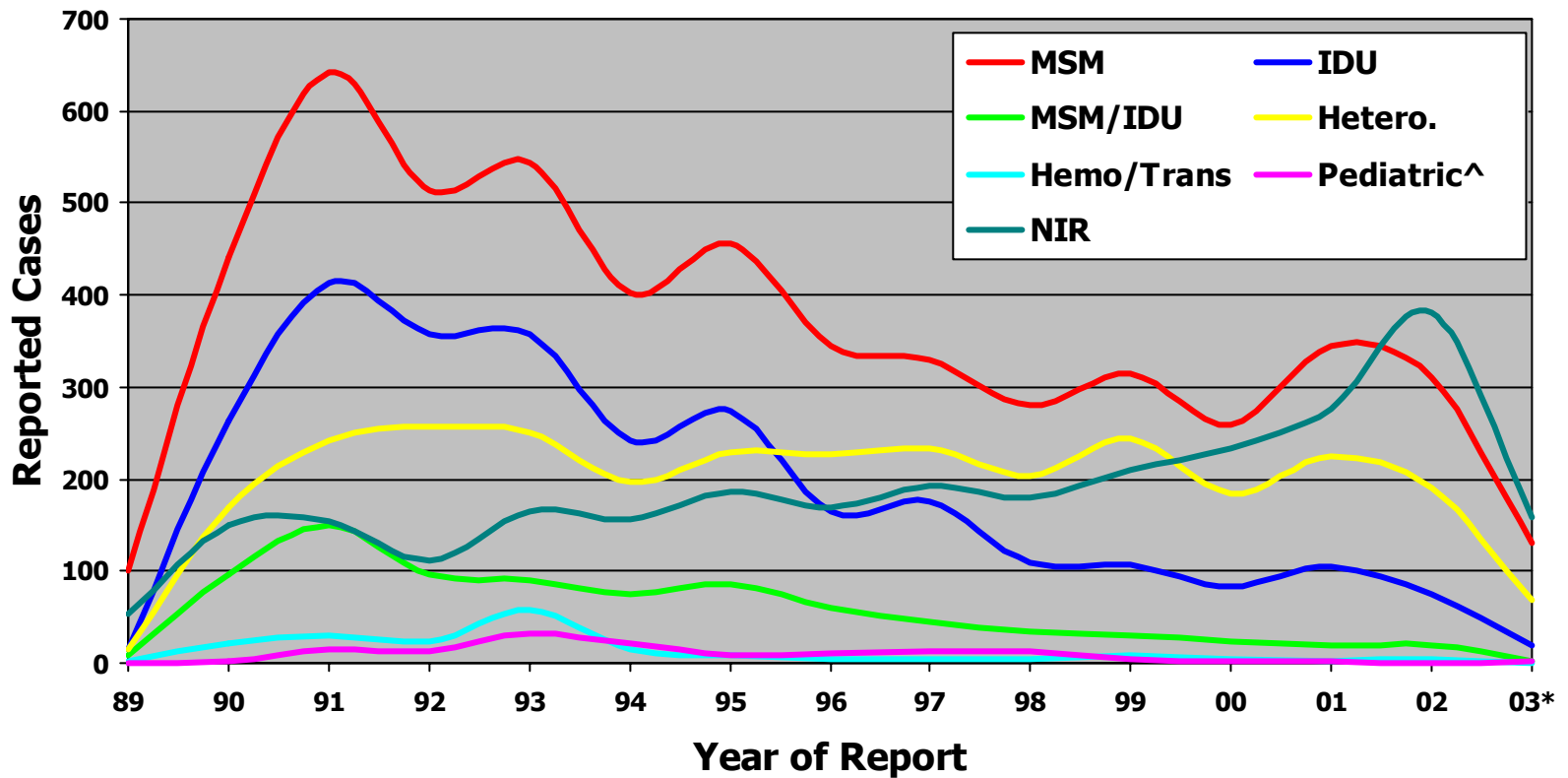
Virginia HIV Cases by Age at Diagnosis



*Data through 6/30/2003.

Does not include three cases with unknown age at diagnosis.

Virginia HIV Cases by Mode of Exposure



*Data through 6/30/2003.

[^]Includes Perinatal, Pediatric Hemophilia, Pediatric Transfusion and Pediatric NIR.