



# Connecting to the ITS Modem Pool For the Macintosh

Teresa Sakata

<b>MAC OS 10.....</b>	<b>1</b>
CONFIGURING THE SYSTEM PREFERENCES.....	1
CONNECTING TO THE MODEM POOL.....	6
<b>MAC OS 8.6-9.2.2 .....</b>	<b>6</b>
CONFIGURING REMOTE ACCESS.....	6
CONNECTING TO THE MODEM POOL.....	7
CLOSING YOUR CONNECTION.....	8
<b>ADDITIONAL HELP.....</b>	<b>8</b>

The following are instructions for configuring your Macintosh to connect to the ITS modem pool.

## Mac OS 10

---

### CONFIGURING THE SYSTEM PREFERENCES

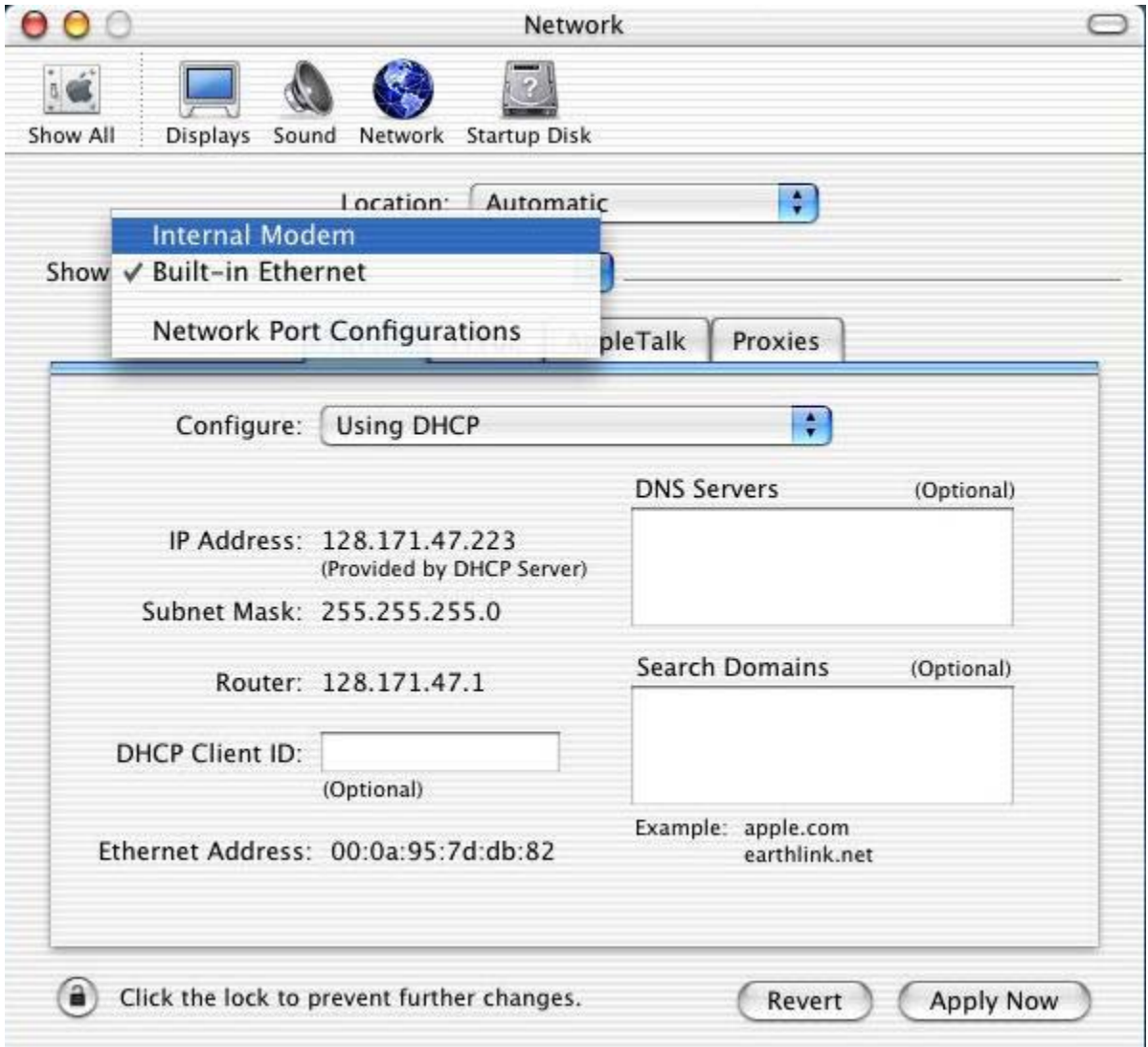
1. Go to the Apple menu and select System Preferences...



2. Click on the Network icon.



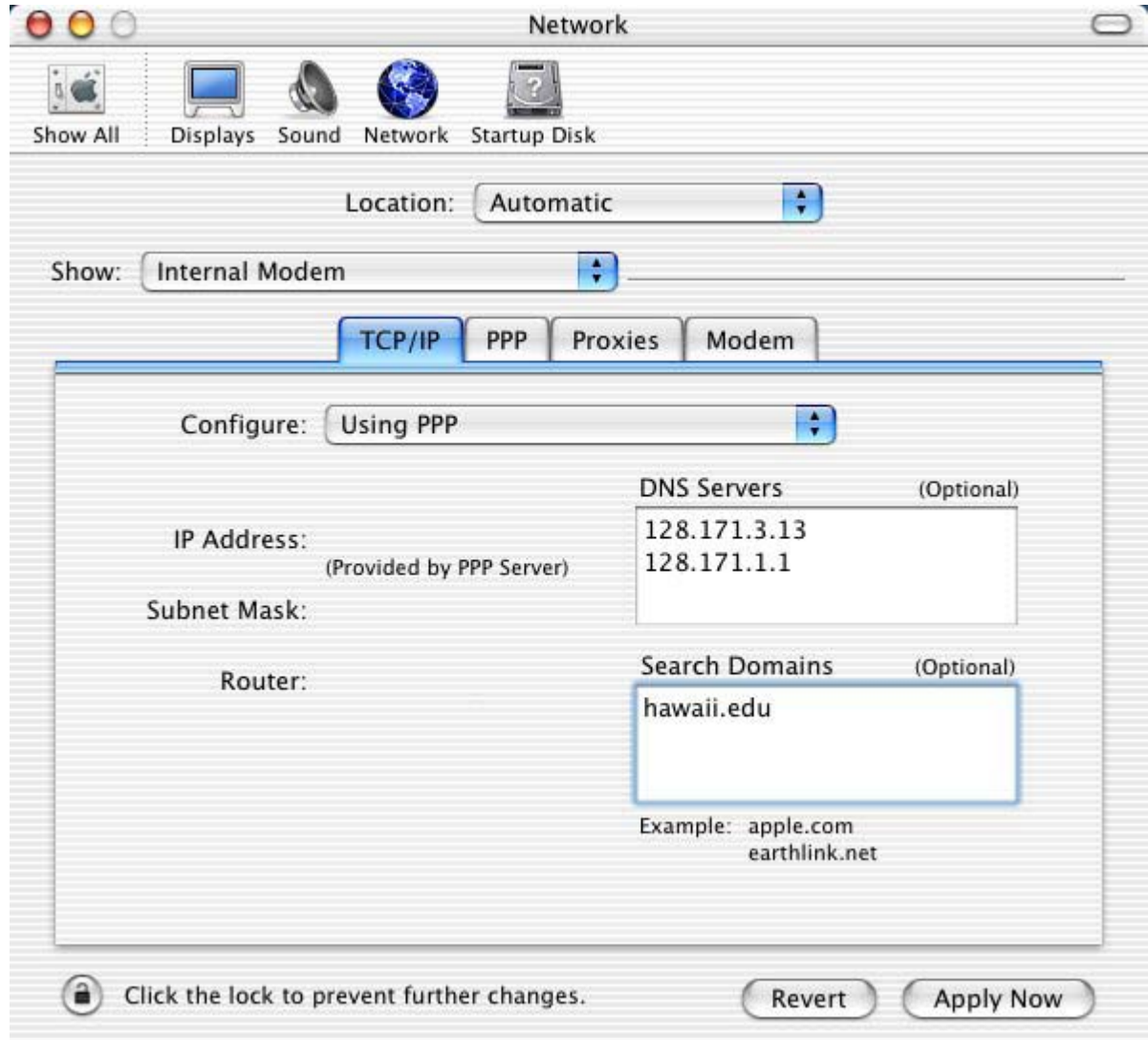
3. Under the "Show" option, select Internal modem



- Under the "Configure" option, select PPP. In the "DNS Servers" box, type  
128.171.3.13  
128.171.1.1

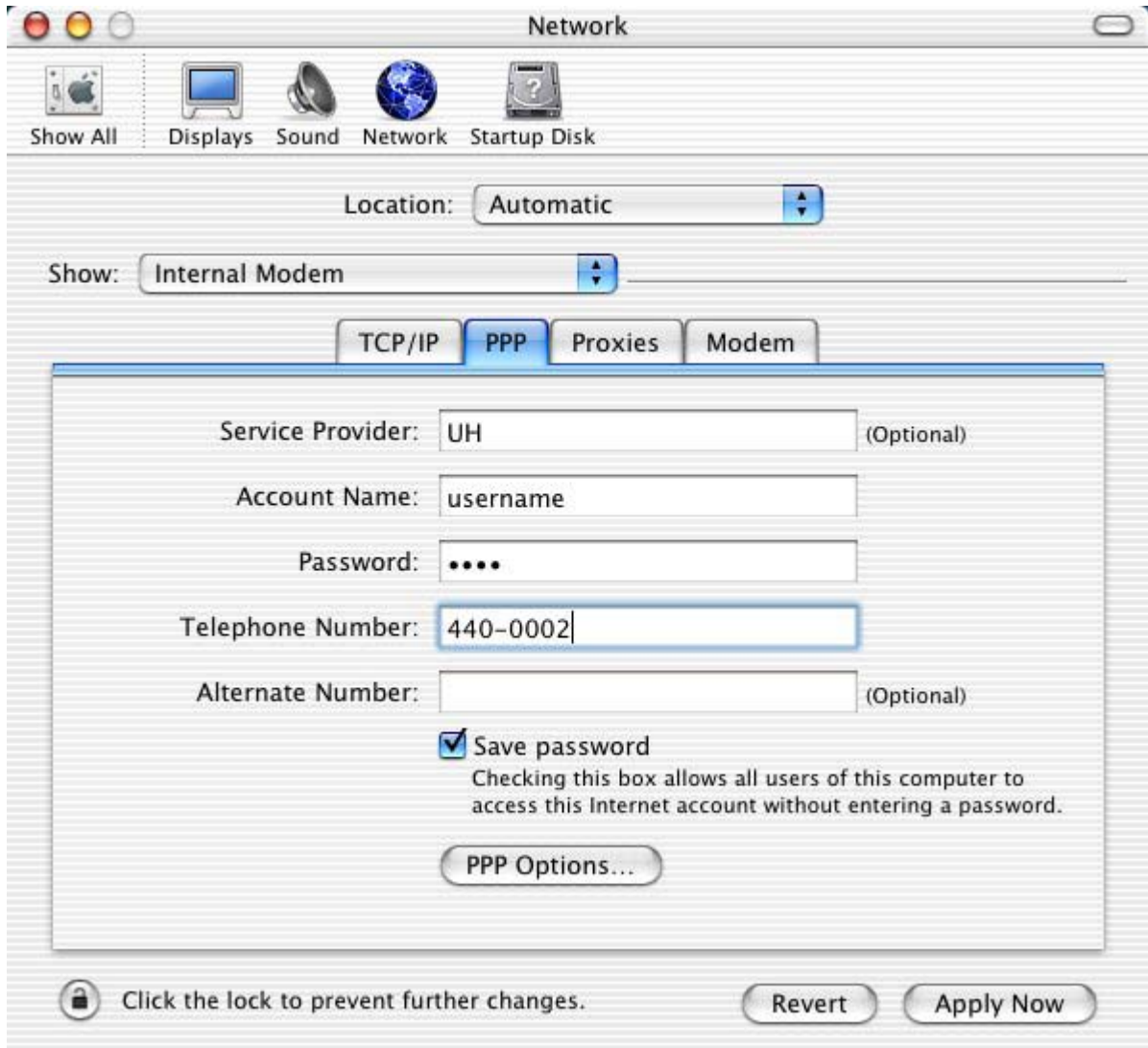
In the "Search Domains" box, type hawaii.edu

After configuring it should look like the image below.



5. Click on the PPP tab. Fill in the boxes as follows:

Service Provider	UH
Account name	your UH Username
Password	your password
Telephone number	440-0002 (9,440-0002 if calling from the Manoa campus)
Alternate number	leave blank
check the box next to "Save password"	



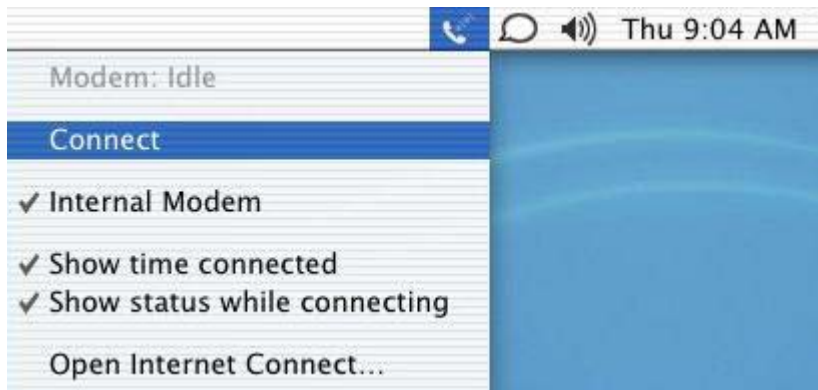
6. Click on the Modem tab. Make sure the box next to "Show modem status in menu bar" is checked. Leave everything else as the default.



7. Click on the Apply Now button. Close the System Preferences window.

## CONNECTING TO THE MODEM POOL

In the upper right corner of the screen, near the time, should be a Phone icon. Hold down the mouse on this icon, and select **Connect...** The modem should dial, and if the ITS modem pool is not busy, you should connect. You can now use your email or other Internet program. *Note that there is a two-hour time limit on the ITS modem pool, after which you will be automatically disconnected with no warning.*



When you are done with your connection, go back to the Phone icon and select **Disconnect** to hang up your connection.

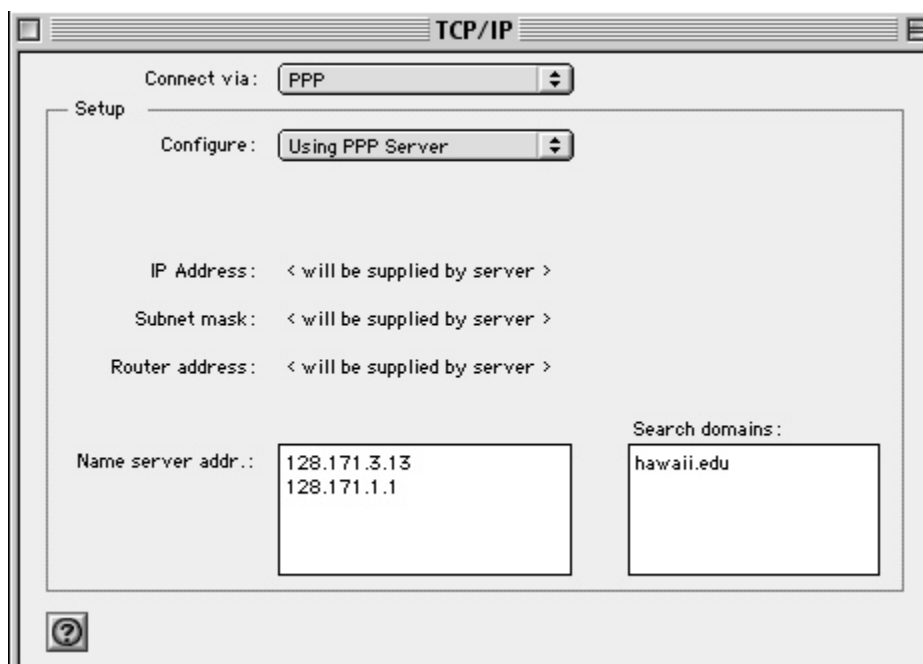
## Mac OS 8.6-9.2.2

---

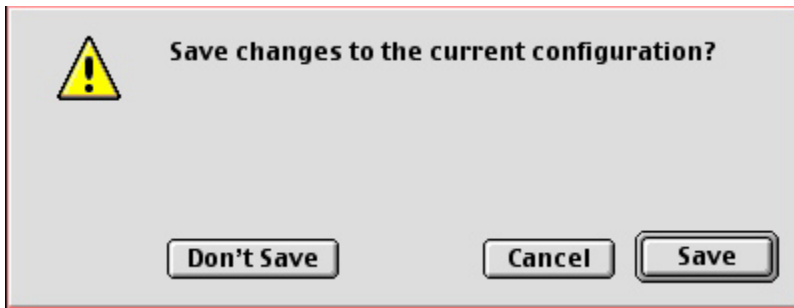
### CONFIGURING REMOTE ACCESS

1. Go to the Apple menu and select Control Panels, then TCP/IP. Fill in the panel as follows:

Connect via	PPP
Configure	Using PPP server
Name server address	128.171.3.13 128.171.1.1
Search domains	hawaii.edu



2. Close the TCP/IP control panel. When you are prompted to save the changes, click on Save.



3. Go to the Apple menu and select **Control Panels**, then **Remote Access** (it might also be called PPP). In the "Name" box, type your **UH Username**. In the "Password" box, type your **password**. In the "Number" box, type **440-0002** (9,440-0002 if calling from the Manoa campus).



4. Close this window. When you are prompted to save, click **Save**.
5. Click **Connect** if you want to try to connect to the ITS modem pool now.

## CONNECTING TO THE MODEM POOL

1. Go to the **Apple** menu and select **Control Panels**, then **Remote Access** (it might also be called PPP). If necessary, type your password in the "Password" box.
2. Click the **Connect** button.
3. Your modem will now dial. If you are successful you will see some colored lines appear in the window. You can now close this window and use your email or other Internet program. Note that there is a two-hour time limit on the ITS modem pool, after which you will be automatically disconnected with no warning.

## CLOSING YOUR CONNECTION

Go to the **Apple** menu and select **Control Panels**, then **Remote Access** (it might also be called PPP). Click on the **Disconnect** button. Close the window.

## Additional Help

---

For additional assistance, please phone the ITS Help Desk at (808) 956-8883, send email to [help@hawaii.edu](mailto:help@hawaii.edu), or fax (808) 956-2108. Neighbor islands may call the ITS Help Desk's toll-free phone number at (800) 558-2669.

Or see the ITS Help Desk home page at [www.hawaii.edu/help](http://www.hawaii.edu/help)  
The ITS walk-in Help Desk is located in  
Keller 105 and Keller 213 on the UH Mānoa Campus.

The University of Hawai'i is an equal opportunity/affirmative action institution.