



# Getting Started with Firefox 2.0

## For Macintosh OS X

Author: Richard Moore

Revised by Deanna Pasternak and Mitchell Ochi

Introduction .....	1
System Requirements .....	1
Where to Get It .....	1
Installation .....	2
Configuring Firefox .....	3
Using Firefox .....	4
Quitting Firefox .....	11
Uninstalling Firefox .....	11
More Information .....	11
Getting Help .....	11

## Introduction

---

This document is an introduction to Firefox 2.0, and is written for the University of Hawai'i (UH) user with a Macintosh personal computer running OS X. Firefox is a free web-browsing program distributed by Mozilla.

## System Requirements

---

System requirements for Firefox 2.0 can be found online at <http://www.hawaii.edu/askus/784>. Also, be sure to check the browser recommendations page for ITS supported web applications at <http://www.hawaii.edu/askus/717> to verify that Firefox will work with any of the web applications you use.

## Where to Get It

---

You can download the current ITS-supported version of Firefox at <http://www.hawaii.edu/askus/575>. Alternatively, you can download the latest version of Firefox from the Mozilla web site at <http://www.mozilla.com>. *Note that this version may differ from the ITS-supported version.*

## Installation

---

Once you have downloaded the Firefox installer to your Macintosh, you can install it by following the instructions below.

1. Close any older versions of Firefox if you have any installed.
2. Double-click the installer on your desktop to install.
3. Read and Accept the license agreement that appears on the first screen.
4. Copy the Firefox application icon to your hard drive by clicking and dragging it to the **Applications** folder on your computer's hard drive.



Firefox 2.0 is now installed on your computer. If you already had a dock icon for an older version of Firefox, it should be updated to Firefox 2.0. You can also create a new shortcut to Firefox 2.0 on your dock at this time by dragging the Firefox icon from **Applications** folder to your dock.

## Configuring Firefox

---

1. To launch Firefox, click on the Firefox icon that is in the dock or open it from within the **Applications** folder.
2. Upon launch for the first time, Firefox will ask if you want to import preferences, bookmarks, history, passwords and other data from other applications. If you wish to import Settings and Data, choose an application and then click **Continue**. If the Import Wizard does not open and you wish to import information, you can get to it under the **File** menu after opening Firefox.



3. Select the items to be imported. Click on **Continue**.



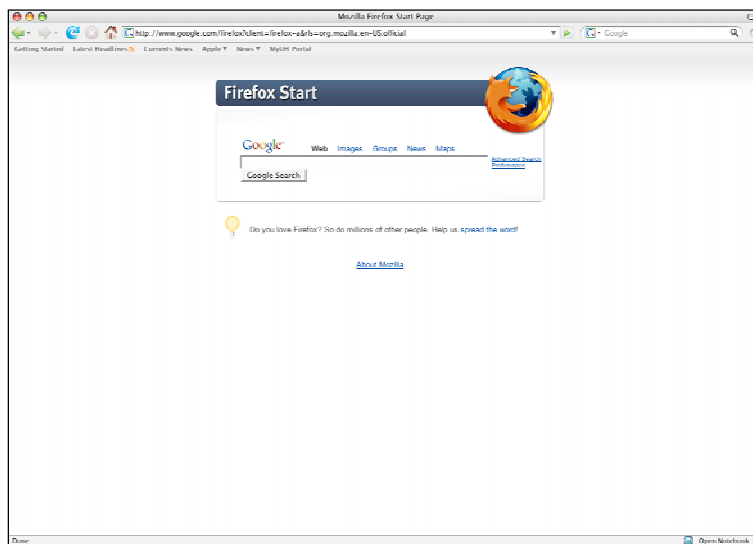
4. The following screen reports the results of the import. Click on **Done**.



## Using Firefox

---

To launch Firefox, click on the Firefox icon that is in the dock or open it from within the **Applications** Folder. The application will open to your configured Home Page. If you have not designated a Home Page of your own, the application will start with the default Firefox start page.



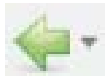
This screen is broken out into sections.



The top bar has three circle shaped buttons on the top left corner and one on the right corner. The red button closes the current window, but not the entire application. The yellow button minimizes the current window to your dock and the green button maximizes the window size. The gray button on the right side toggles between a full screen browser mode that removes the other toolbars and one with the toolbars.



The toolbar under the previous one is called the **Navigation Toolbar**. You can choose to show or not to show this toolbar by going to **View > Toolbars** and either selecting or unselecting this toolbar (the check next to the toolbar name means it has been selected). From left to right this toolbar includes:



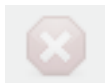
**Back** button – This button takes you back to previous pages you have visited. You can get a list of these pages by clicking on the arrow next to the button. If you have not visited any pages yet, this button is gray.



**Forward** button – If you click the back arrow to return to previous pages, this button turns green, allowing you to move forward. You can list the pages to move forward to by clicking on the arrow next to this button.



**Reload Current Page** button – You can use this button to reload the page you are viewing to check for updates or changes to it. You can also use this button if the current page is not displaying properly.



**Stop Loading Page** button – This button is only active (bright red) when a page is trying to load. You can stop the page from loading if you click this button.



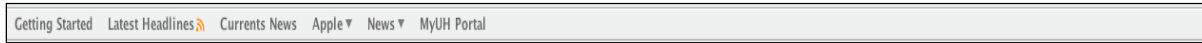
**Home** button – Clicking on this button will return you to the Home Page that you have setup in Firefox.



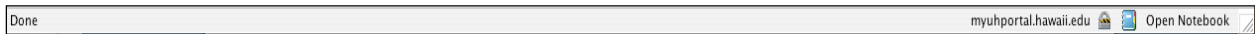
The **Address Bar** is where you type in the URL (web page address) or file name to which you would like to navigate. Clicking on the arrow shows the web sites you have previously visited. Once you type in the URL, you can either hit the **return** key or click the green arrow on the right of the toolbar to go to that page.



The **Search Bar** is where you can use your favorite search engine without having to navigate to the search engine's web site. The default search engine is Google, but you change it to others, such as Amazon or Yahoo. You can also download other search engines.



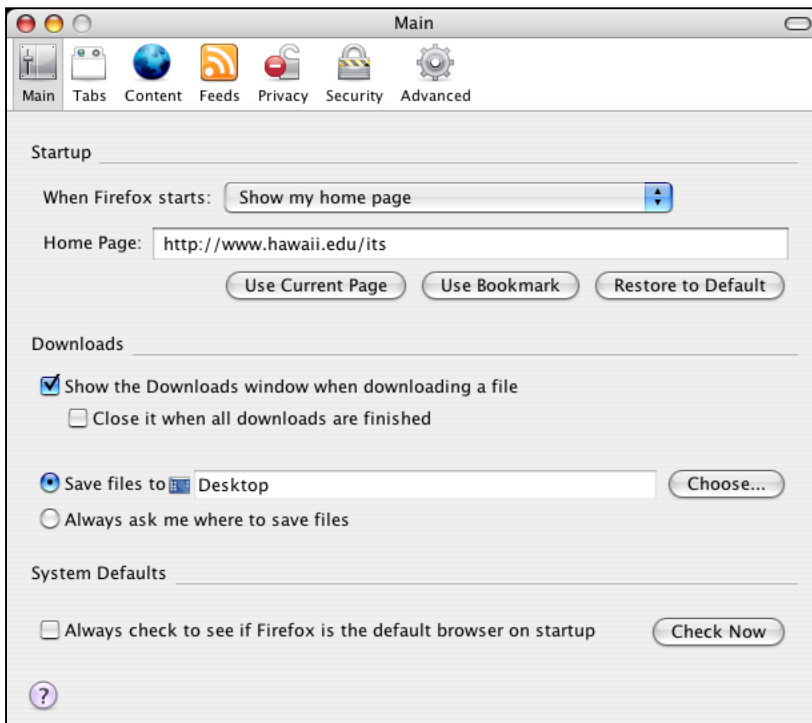
The next toolbar down is the **Bookmark Bar**. You can add bookmarks to web sites that you visit frequently through this toolbar. You can add bookmarks by dragging the image next to the URL to this bar, or by editing it under the **Bookmarks** menu. This toolbar is also where you can read RSS feeds. Bookmarks that include RSS feeds are marked with an orange icon. You can also choose not to view this toolbar by unselecting it under **View > Toolbars**.



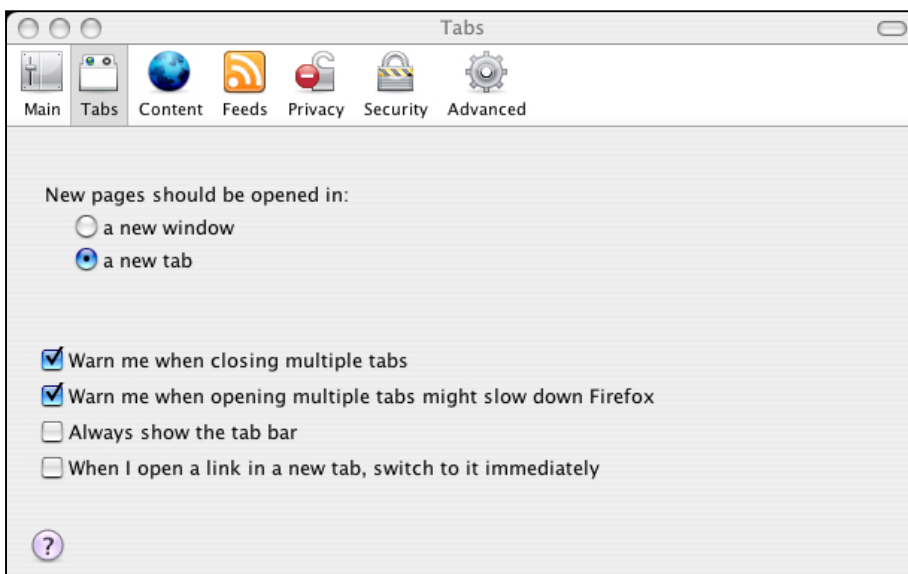
At the bottom of the page there is the **Status Bar**. The bottom left side shows you the status of a page that is loading. The bottom right side shows you the site you are viewing and whether it is a secure page or not. A secure page shows a lock. Pages that are not secure do not show this lock. If you install extensions, such as the Google Notebook, they will also show up here for quick access.

Now that you are familiar with the main Firefox screen, there are many preferences that you can customize in Firefox. To change various options in Firefox, go to **Firefox > Preferences**.

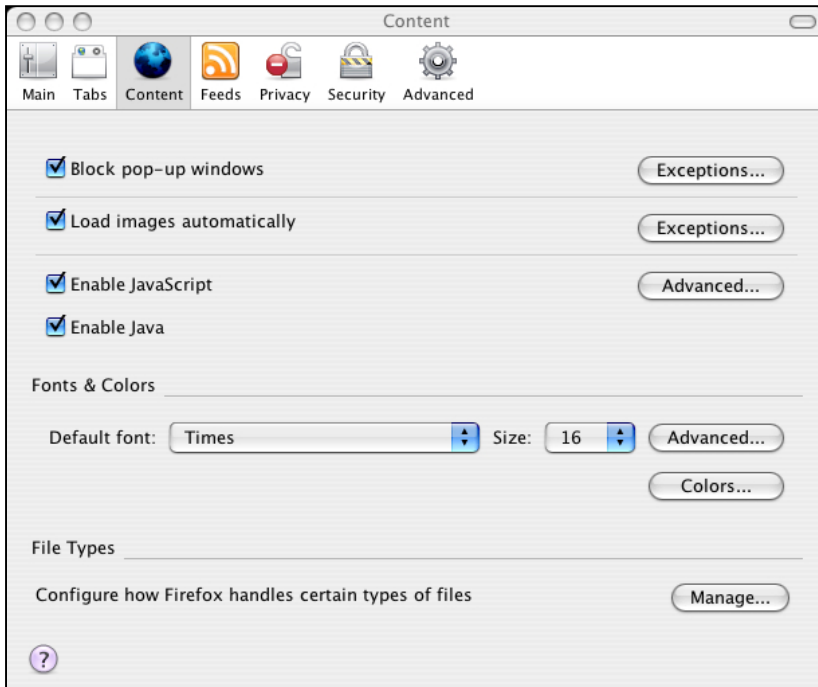
**Main** is where you can set the **Home Page**, which is the page that Firefox opens automatically when it starts. You can also change how Firefox behaves for file downloads, as well as set Firefox to check to see if it is the default web browser for your computer when it starts up.



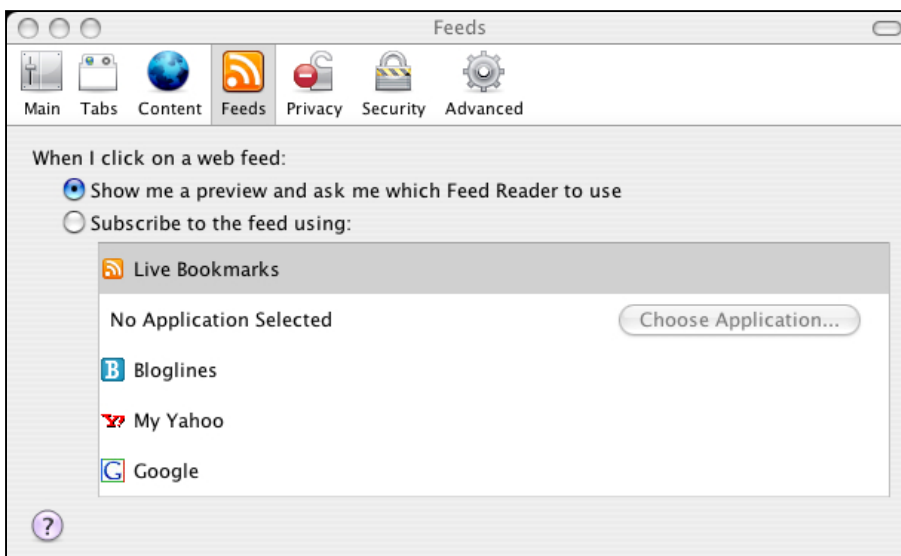
Under **Tabs**, you can determine whether or not to use tabbed browsing in Firefox. You can also manage the behavior of the tabs.



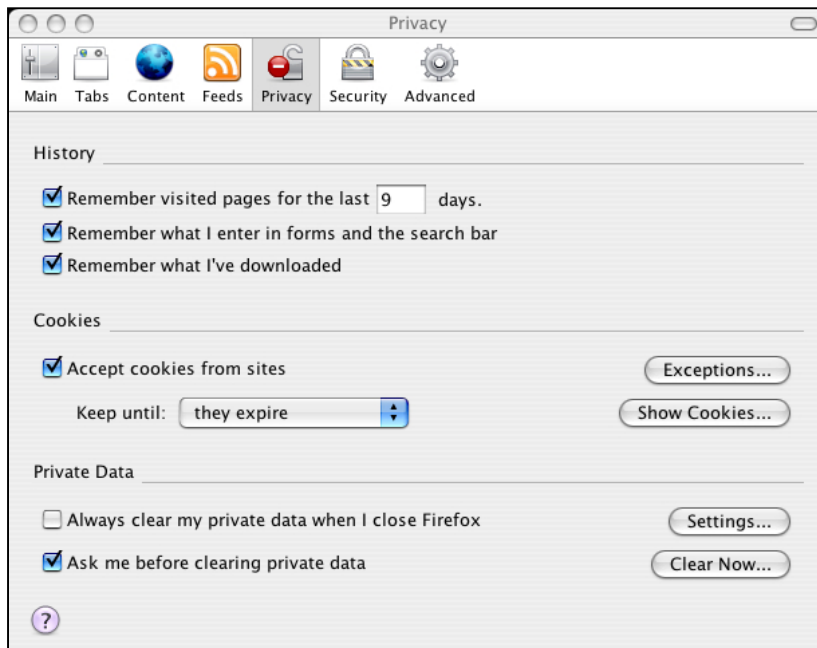
**Content** is where you can set various content-related options, such as blocking pop-up windows, loading images on web pages, using Java and JavaScript, setting default fonts and colors for Firefox to use, and setting up how Firefox handles certain file types. For example, you can choose to have .pdf files open with Adobe Acrobat instead of Preview.



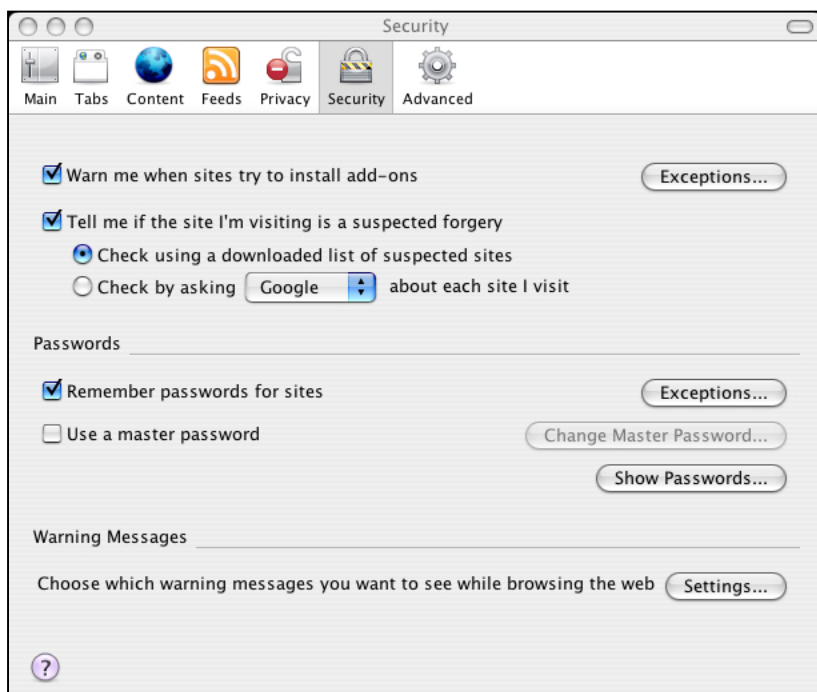
**Feeds** is where you can set the behavior for how various RSS feeds are handled. By default, they are viewed in the **Live Reader** on the **Bookmark Bar**.



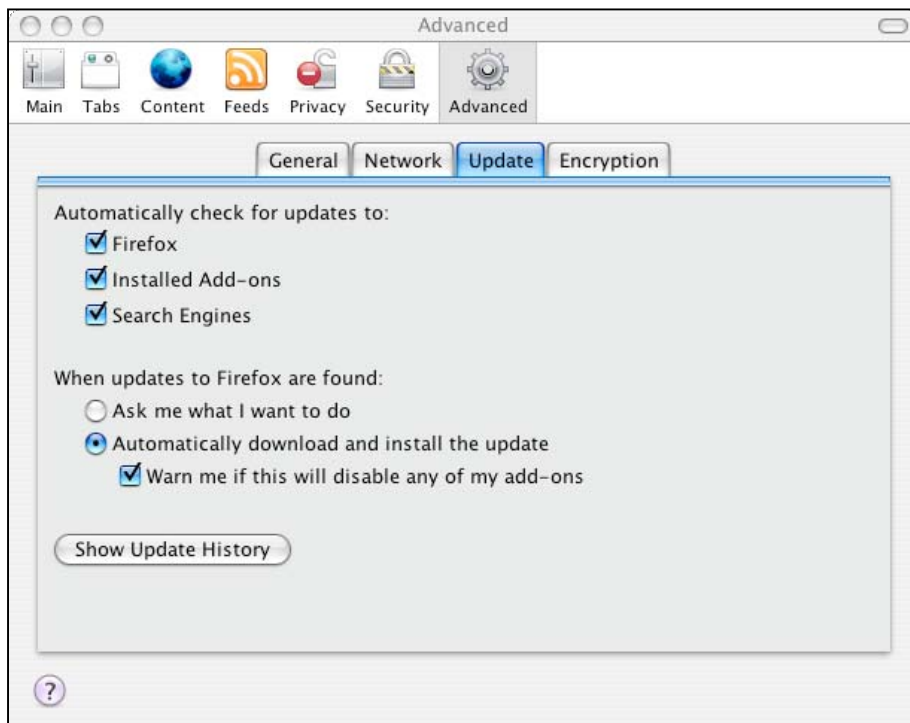
**Privacy** is where you will find the privacy settings for Firefox. This is where you can change the behavior of browser history, cookies, and private data (such as saved passwords). Here, you can set your private data to be cleared every time you close Firefox.



Under **Security**, you can manage warning messages that Firefox uses, particularly when installing add-ons or visiting sites that may not be safe. You can also manage saved web site passwords.



**Advanced** is where you can set other preferences for Firefox. There are several tabs under **Advanced**.



- The **General** tab contains some options relating to the general use of Firefox while browsing different web pages. The options include accessibility and language options.
- The **Network** tab contains network settings that Firefox will use, including proxy settings and cache options.
- The **Update** tab contains options relating to what updates you would like Firefox to check for over the Internet. Firefox can automatically check for updates for the core web browser, as well as for any installed add-ons. If you would like this feature disabled, you may uncheck these check boxes. Under this tab, you can also configure how Firefox handles these updates when installing them.
- The **Encryption** tab contains options for what encryption Firefox can use when encountering secure web sites, and also how to proceed with security certificates that the browser encounters.

For more information on the above options, please refer to the help file within Firefox by selecting **Firefox Help** from the **Help** menu.

## Quitting Firefox

---

When you are finished with Firefox, you can exit the application by going to **Firefox** and selecting **Quit Firefox**.

## Uninstalling Firefox

---

You can uninstall Firefox from your hard drive by dragging the shortcut out of the dock, and dragging the Firefox application out of the **Applications** folder and into the Trash. Firefox cannot be open on your computer when you are doing this.

## More Information

---

For more information on Firefox 2.0, you can visit the following web sites:

- ITS AskUs article on Firefox – <http://www.hawaii.edu/askus/784>
- Mozilla Firefox web site – <http://www.mozilla.com/en-US/firefox/>

## Getting Help

---

For additional assistance, please phone the ITS Help Desk at (808) 956-8883,  
send email to [help@hawaii.edu](mailto:help@hawaii.edu), or fax (808) 956-2108.  
Neighbor islands may call the ITS Help Desk's toll-free phone number at (800) 558-2669.

Or see the ITS web site at <http://www.hawaii.edu/its>  
The ITS walk-in Help Desks are located in  
Keller 105, Keller 213, the Sinclair CLIC Lab, and the ITS Hamilton Lab on the UH Mānoa Campus.

The University of Hawai'i is an equal opportunity/affirmative action institution.