



Getting Started with iTerm

For the Macintosh

Kevin Urasaki

What is iTerm?	1
What are the system requirements for iTerm?	1
How do I install iTerm?	2
How do I use iTerm?	2
How do I configure a default connection?	4
How to create bookmarks?	5
How to exit iTerm.....	6
Getting Help	6

What is iTerm?

iTerm is a terminal emulation program. This program uses the SSH2 protocol. All information passed through iTerm is encrypted. iTerm's home page is at

<http://iterm.sourceforge.net/>

What are the system requirements for iTerm?

iTerm runs on a Macintosh running Mac OS X 10.2.x or later. iTerm does not run on Mac OS X 10.1 or below. iTerm is available for download at

<http://www.hawaii.edu/help/software/mac/iterm.html>

For those needing a SSH client to use on Mac OS 9.x or earlier, please use MacSSH. MacSSH is available for download at:

<http://www.hawaii.edu/help/software/mac/macssh.html>

If you are still using Mac OS 10.1.x, ITS recommends that you upgrade your OS to Mac OS X 10.2. Please call the UH Bookstore for purchasing information.

How do I install iTerm?

After downloading iTerm, the application should automatically uncompress. If it does not, double-click on the **iTerm-0.7.6.dmg.gz** or the **iTerm-0.7.6.dmg** file. You should then have the iTerm folder. This iTerm folder is only a temporary folder so you must copy the contents of the iTerm Folder to a folder on your computer.



Figure 1: iTerm folder

How do I use iTerm?

To launch iTerm, double-click on the **iTerm application**.



Figure 2: iTerm application

By default, the following window will open.

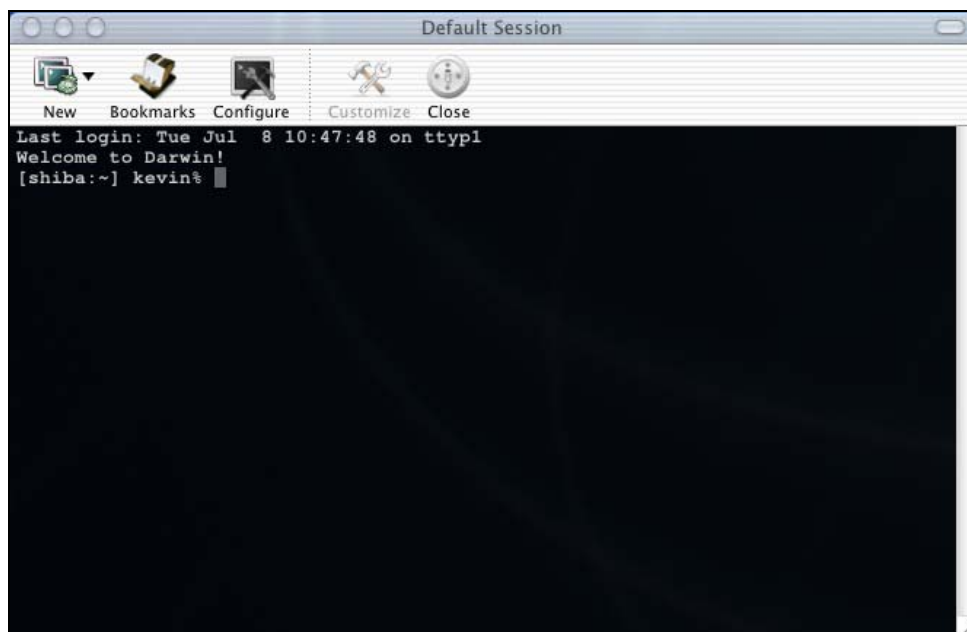


Figure 3: iTerm Connection Window

This is your terminal window. It is currently connected to your local Macintosh. If you would like to use this window and connect to the uhunix2 system, at the prompt type in:

```
ssh username@uhunix2.its.hawaii.edu
```

and press **Return**.

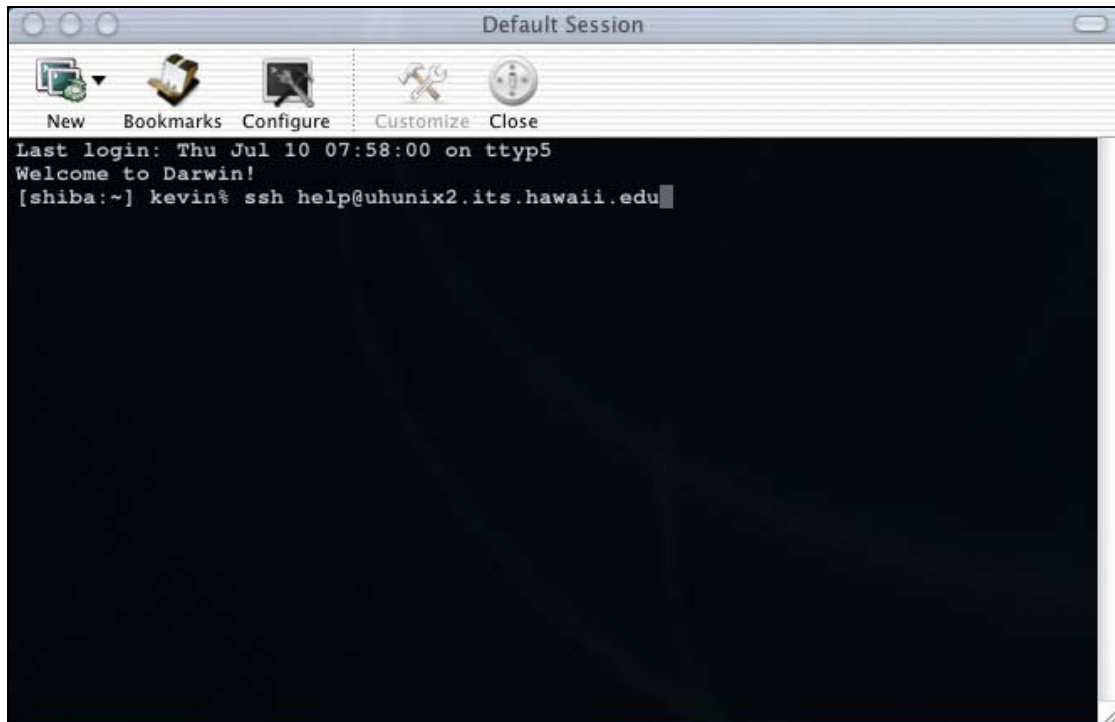


Figure 4:ssh

The system should then ask you to enter a password for the username.

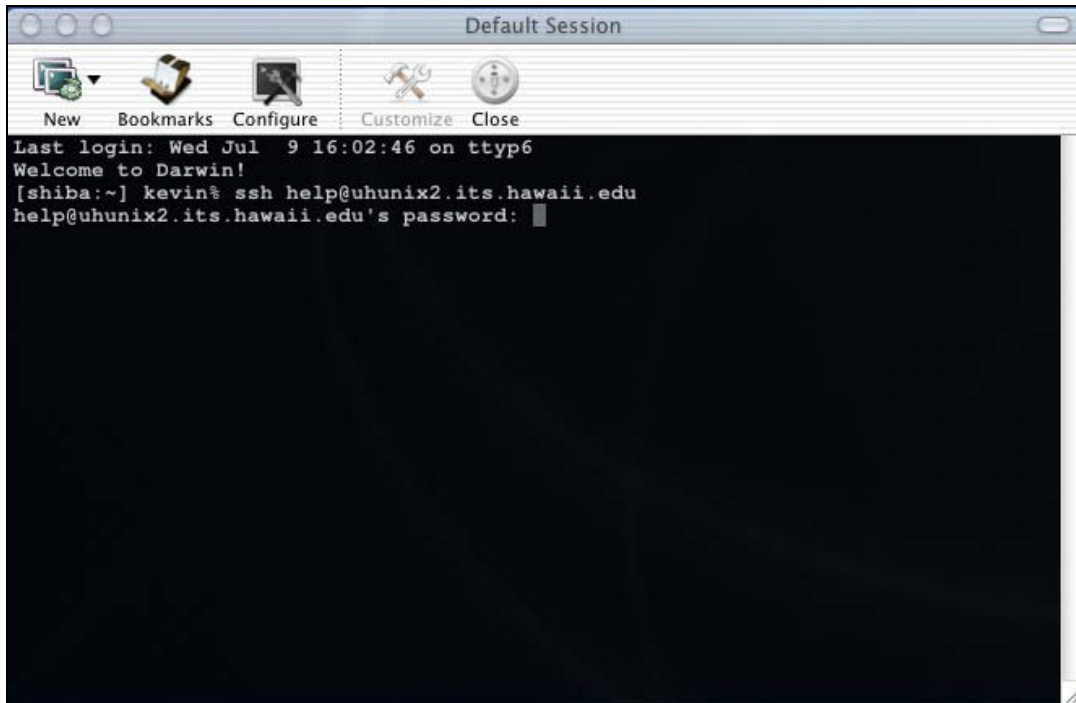


Figure 5: Password

Enter your password, and you should be connected to uhunix2.its.hawaii.edu

How do I configure a default connection?

If you would like to configure iTerm to automatically open a window to uhunix2.its.hawaii.edu, click on the **Bookmarks** button, see *Figure 3: iTerm Connection Window*. The following window should open. To edit your default connection, highlight the Default Session and click on **Edit**.

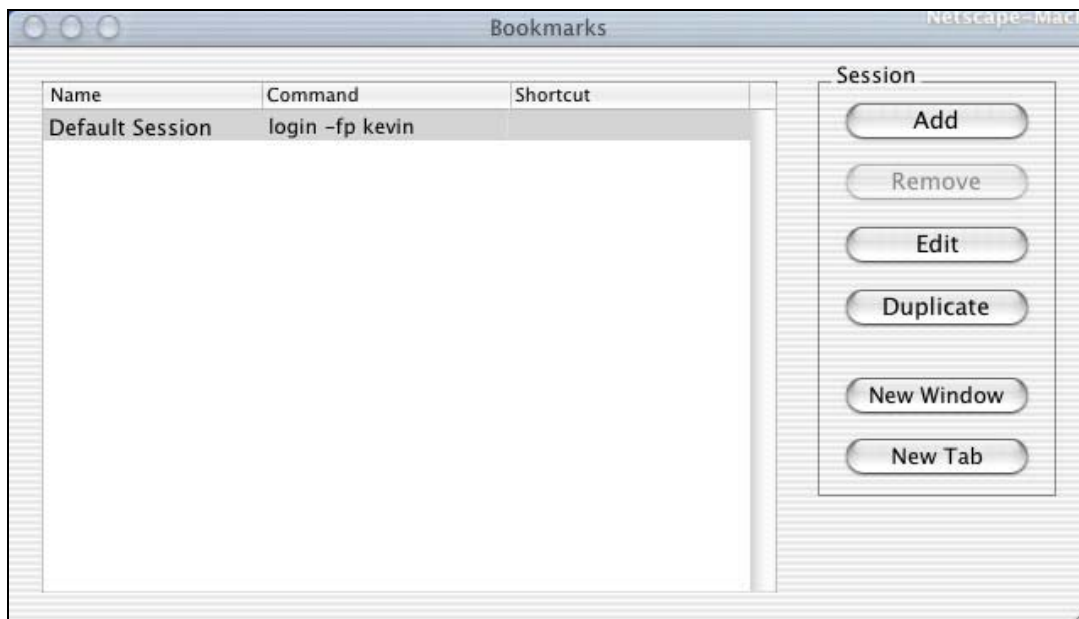


Figure 6: Bookmarks

The following window will open. In the Command box, enter `ssh username@uhunix2.its.hawaii.edu`, then click **OK**. By default, Delete key sends backspace is not selected. If you see `^H` when hitting the backspace key in `uhunix2.its.hawaii.edu`, please enable this option.

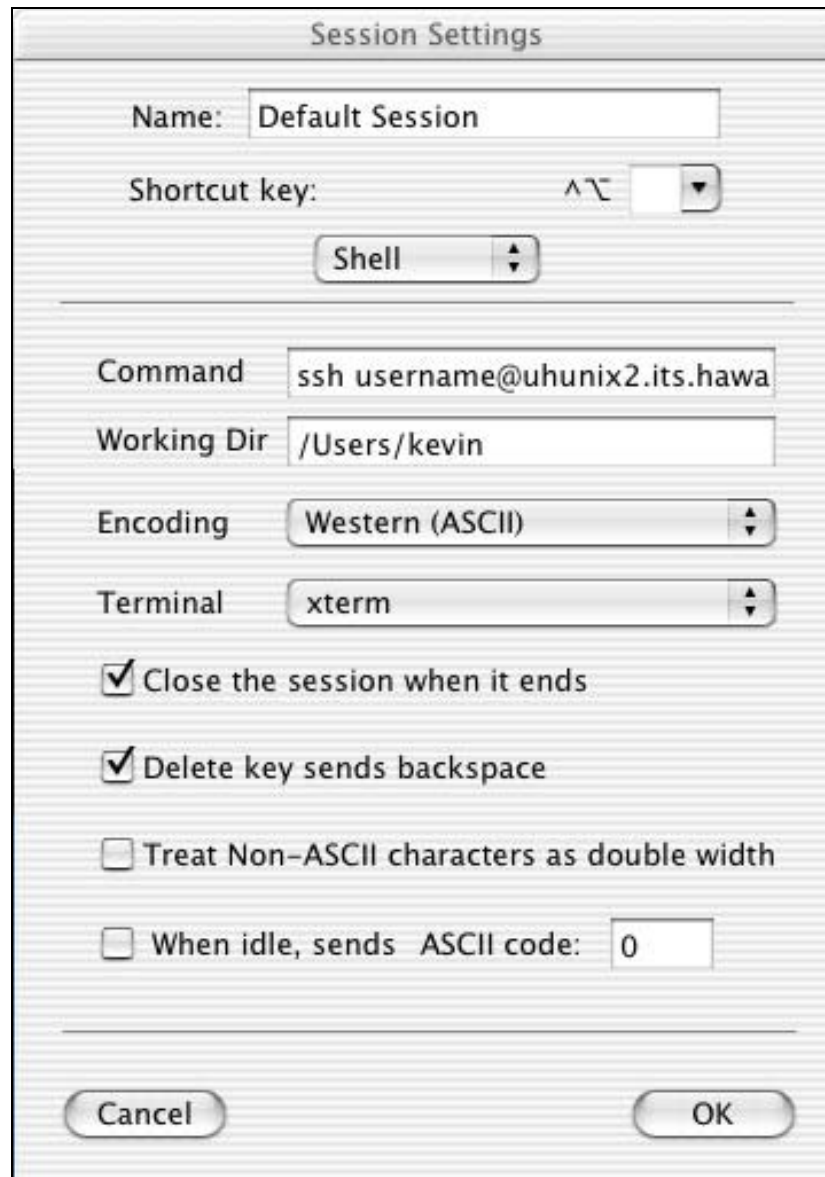


Figure 7: Session settings

How to create bookmarks?

Creating bookmarks is similar to creating a default session. After you click on the **Bookmarks** button, click on **Add**. You should then see the session settings Screen, see *Figure 7: Session settings*.

How to exit iTerm

To exit iTerm, click on the **iTerm** menu, then select **Quit**

Getting Help

For additional assistance with iTerm, please call the ITS Help Desk at the number listed below.

For additional assistance, please phone the ITS Help Desk at (808) 956-8883,
send email to help@hawaii.edu, or fax (808) 956-2108.
Neighbor islands may call the ITS Help Desk's toll-free phone number at (800) 558-2669.

Or see the ITS Help Desk home page at www.hawaii.edu/help
The ITS walk-in Help Desks are located in
Keller 105, Keller 213 and ITS CLIC Lab on the UH Mānoa Campus.

The University of Hawai'i is an equal opportunity/affirmative action institution.