



# Getting Started with MacSSH For the Macintosh

Kevin Urasaki

What is MacSSH? .....	1
What are the system requirements for MacSSH? .....	1
How do I install MacSSH? .....	2
How do I use MacSSH? .....	2
How do I configure a default connection? .....	3
How to create favorites? .....	4
How to exit MacSSH .....	4
Getting Help .....	5

## What is MacSSH?

---

MacSSH is a SSH client that supports the SSH2 protocol. This SSH client allows you to log in to the uhunix2.its.hawaii.edu system using encryption. MacSSH's home page is at

<http://www.macssh.com>

## What are the system requirements for MacSSH?

---

MacSSH runs on a Macintosh running Mac OS 7.x or later. MacSSH will run on Mac OS X in classic mode. MacSSH is available for download at

<http://www.hawaii.edu/help/software/mac/macssh.html>

For those needing a Mac OS 10.2.x or later SSH client, please use iTerm. iTerm is available for download at

<http://www.hawaii.edu/help/software/mac/iterm.html>

---

## How do I install MacSSH?

---

After downloading MacSSH, the application should automatically uncompress. You should have the MacSSH folder on your desktop.



Figure 1: MacSSH PPC folder

---

## How do I use MacSSH?

---

To launch MacSSH, double-click on the **MacSSH PPC** folder and then double click on the **MacSSH application**.



Figure 2: MacSSH application

Then click on the **File** menu, then select **Open Connection**. In the Host Name box, enter **uhunix2.its.hawaii.edu**. If you wish, you may enter something in the Window Name box. Then click on **Connect**.



Figure 3: MacSSH Open Connection Window

The following window should open. Please enter your UH Username and password, then click on **OK**.

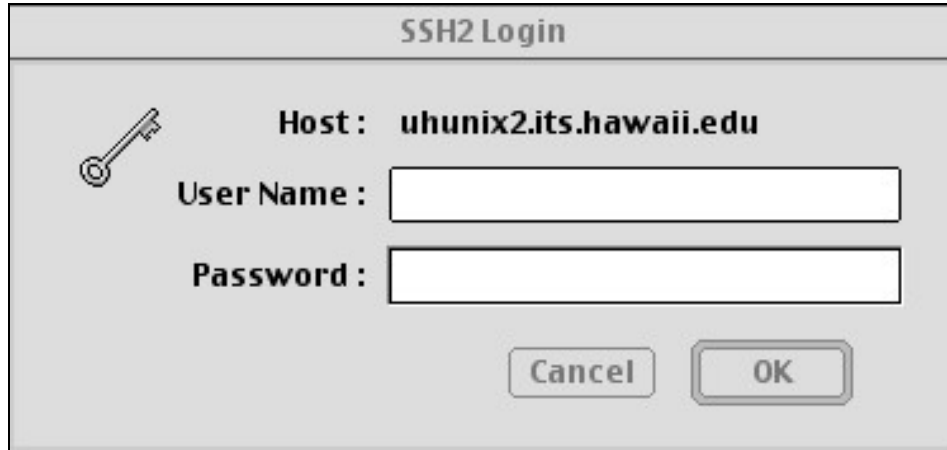


Figure 4:ssh

Once the system authenticates your UH Username and password, the uhunix2 connection window will open.

## How do I configure a default connection?

---

If you would like to configure MacSSH to automatically open a window to uhunix2.its.hawaii.edu, click on the **Favorites** menu and select **Edit Favorites**. The following window should open. To edit your default connection, highlight <Default> and click on **Edit**.

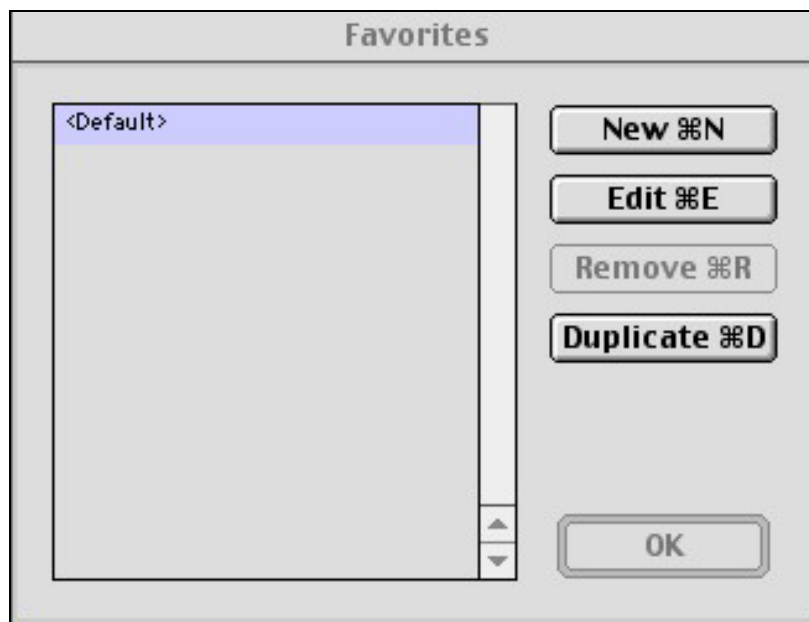


Figure 5: Favorites

The following window will open. In the Host Name box, enter `uhunix2.its.hawaii.edu`. Then click **OK**.

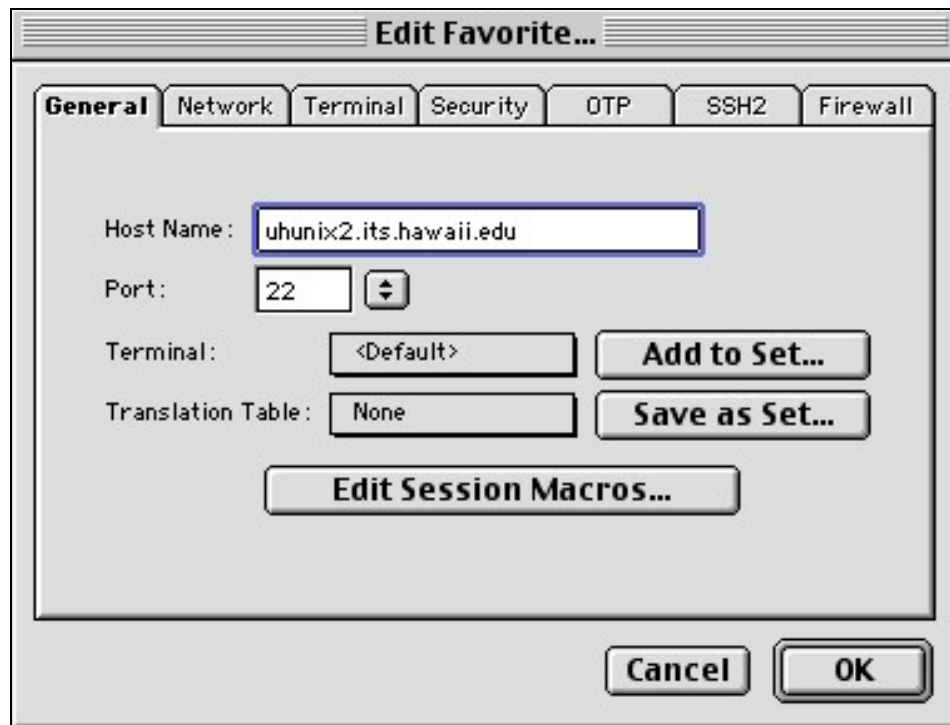


Figure 6: Edit Favorites window

## How to create favorites?

---

Creating favorites is similar to creating a default session. Click on the **Favorites** menu, then select **Edit Favorites Bookmarks** button, click on **Add**. You should then see the session settings screen, see *Figure 6 Edit Favorites window*.

## How to exit MacSSH

---

To exit MacSSH, click on the **File** menu, then select **Quit**

## Getting Help

---

For additional assistance with MacSSH, please call the ITS Help Desk at the number listed below.

For additional assistance, please phone the ITS Help Desk at (808) 956-8883,  
send email to **help@hawaii.edu**, or fax (808) 956-2108.  
Neighbor islands may call the ITS Help Desk's toll-free phone number at (800) 558-2669.

Or see the ITS Help Desk home page at **www.hawaii.edu/help**  
The ITS walk-in Help Desks are located in  
Keller 105, Keller 213, and ITS CLIC Lab on the UH Mānoa Campus.

The University of Hawai'i is an equal opportunity/affirmative action institution.