



Getting Started with SFTP

For the Macintosh

Kevin Urasaki

What is SFTP?	1
What are the system requirements for SFTP?	1
How do I install SFTP?	2
How do I use SFTP?	2
How do I upload a file/folder?	4
How do I download a file/folder?	6
How to exit SFTP	6
Getting Help	6

What is SFTP?

SFTP is a sFTP client. SFTP allows you to transfer your files encrypted. SFTP's home page is at:

<http://pro.wanadoo.fr/chombier/>

Information Technology Services has purchased a limited number of licenses of this software for University of Hawaii faculty, staff, and students. Once you are no longer affiliated with the University, you MUST remove the program from your computer.

What are the system requirements for SFTP?

Although SFTP runs on a Macintosh running Mac OS 8.1 through OS X, ITS purchased SFTP for the University's Mac OS 8.1 through Mac OS 9.x users. SFTP is available for download at

<http://www.hawaii.edu/help/software/mac/sftp.html>

For those using Mac OS X, please use Fugu. Fugu is available for download at:

<http://www.hawaii.edu/help/software/mac/fugu.html>

How do I install SFTP?

After downloading SFTP, the application should automatically uncompress. You should have the SFTP Classic folder on your desktop.



Figure 1: SFTP folder

How do I use SFTP?

To launch SFTP, double-click on the **SFTP Classic** folder and then double-click on the **MacSFTP Classic** application.



Figure 2: SFTP application

In the Hostname box enter **uhunix2.its.hawaii.edu**. In the Login box enter your UH Username and in the Password box enter your password. Then click on **Connect**.

Note: If you are publishing files to be viewed on the Internet, substitute

uhunix2.its.hawaii.edu 2222

for the host name. By doing so, when the files are uploaded to the Internet, they will be given the 644 permission setting (read & write for owner, read for group, and read for others).

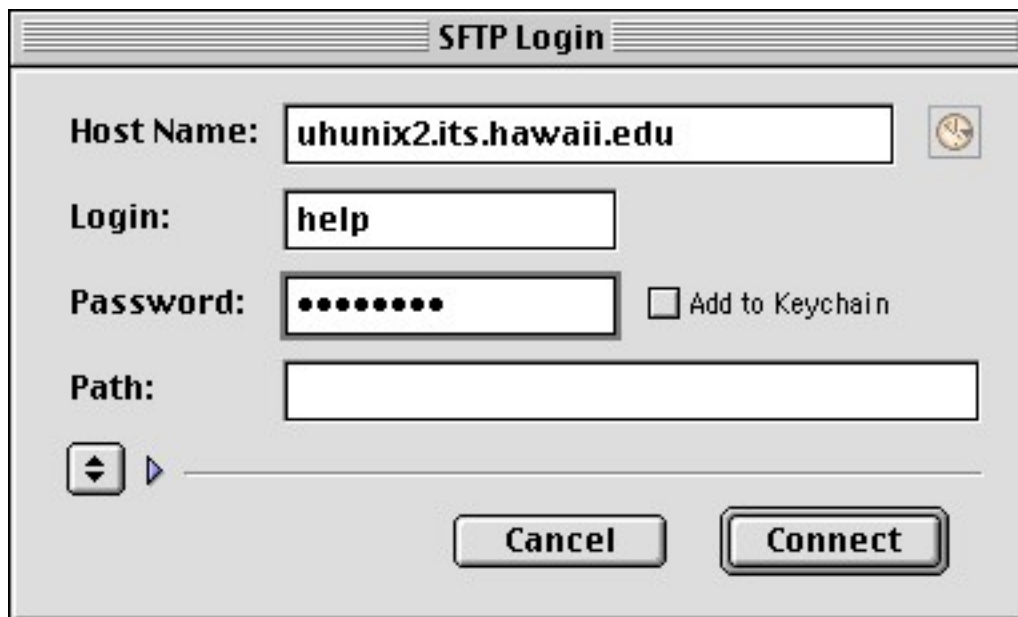


Figure 3: SFTP login

After the system authenticates your UH Username and password and if this is the first time you are using this program, you should see the following screen.

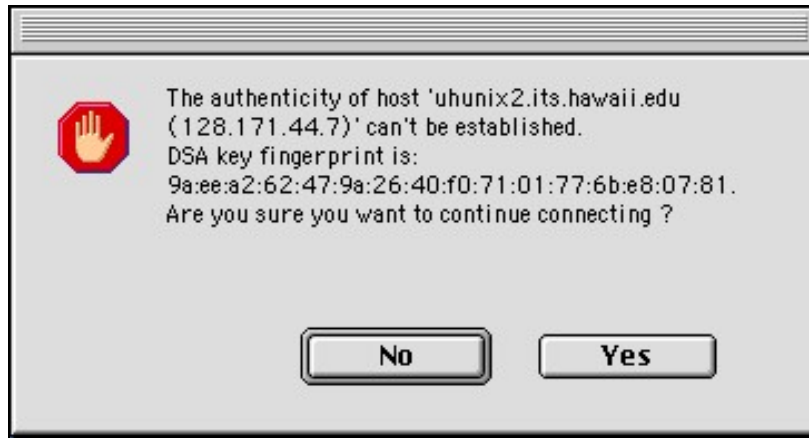


Figure 4: fingerprint message

After you click on **YES**, you should see the following screen. You now have an established sftp connection to uhunix2.its.hawaii.edu

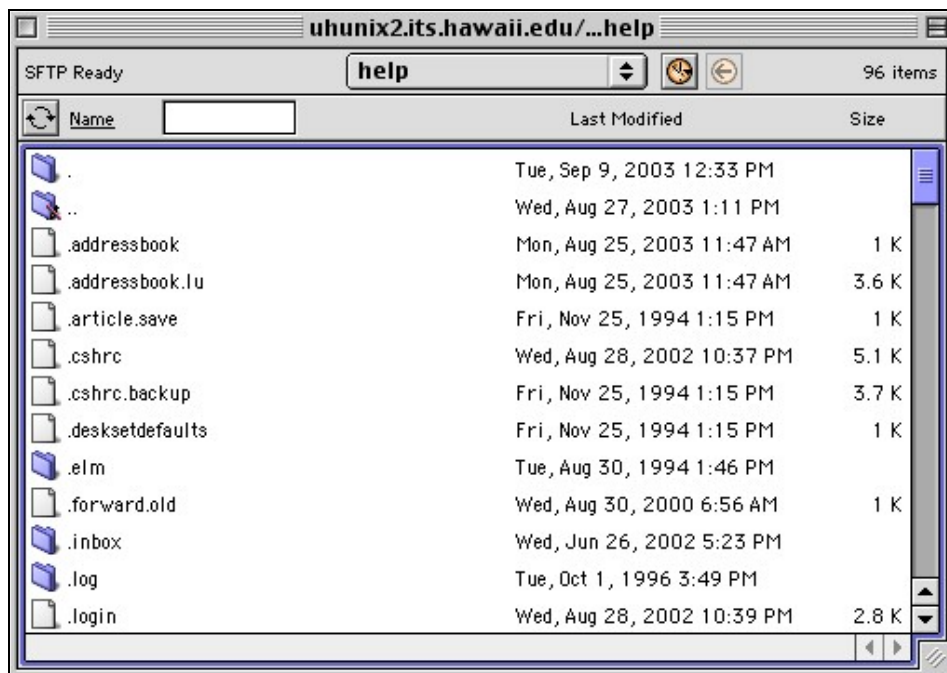


Figure 5: SFTP window

How do I upload a file/folder?

To upload a file or folder, click on the **Remote** menu and select **Put Files/Directories**.

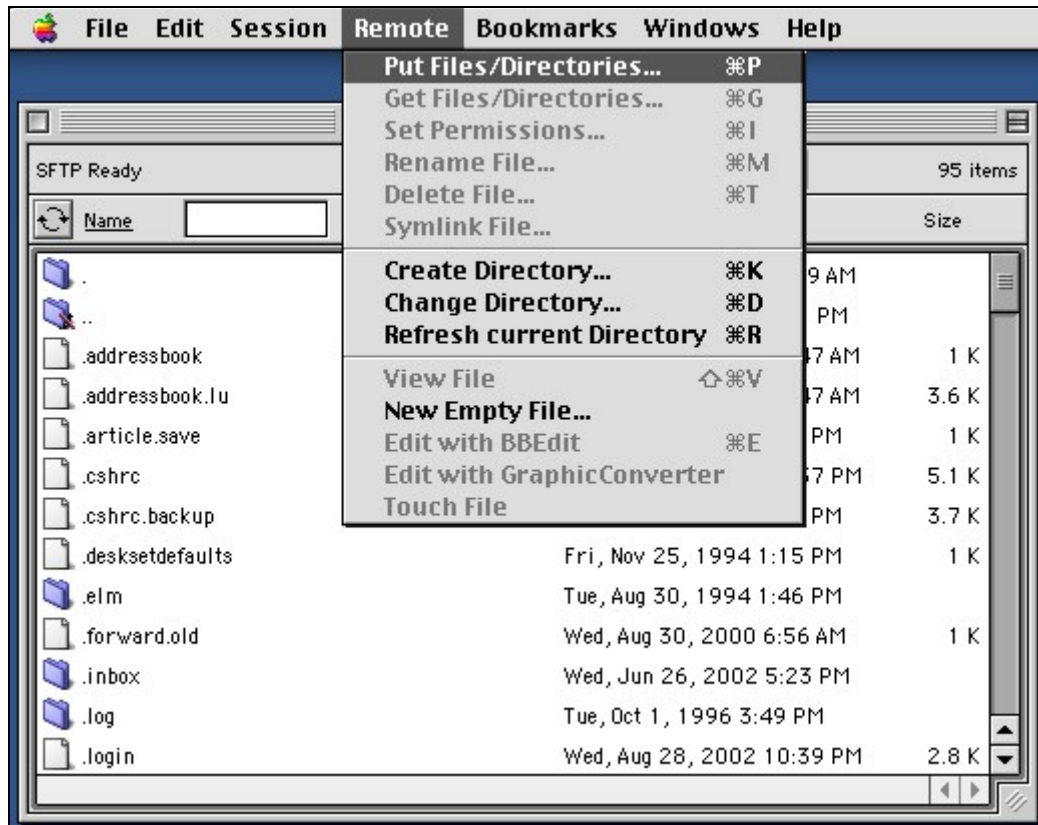


Figure 6: SFTP upload window

Then select the file or folder you would like to upload...

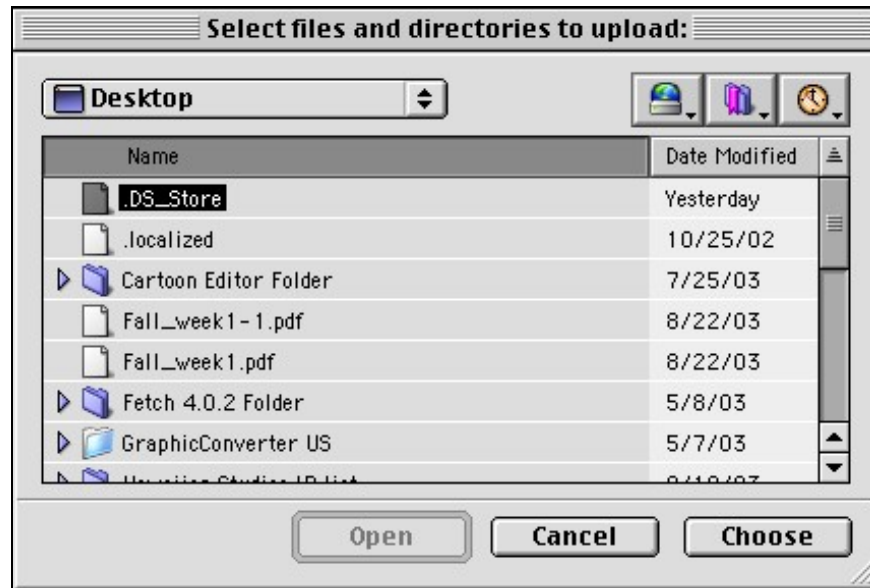


Figure 7: select upload window

then click **Choose**.

How do I download a file/folder?

To download a file or folder, highlight the file/folder in the SFTP window, then select **Get file/folder** under the **Remote** menu.

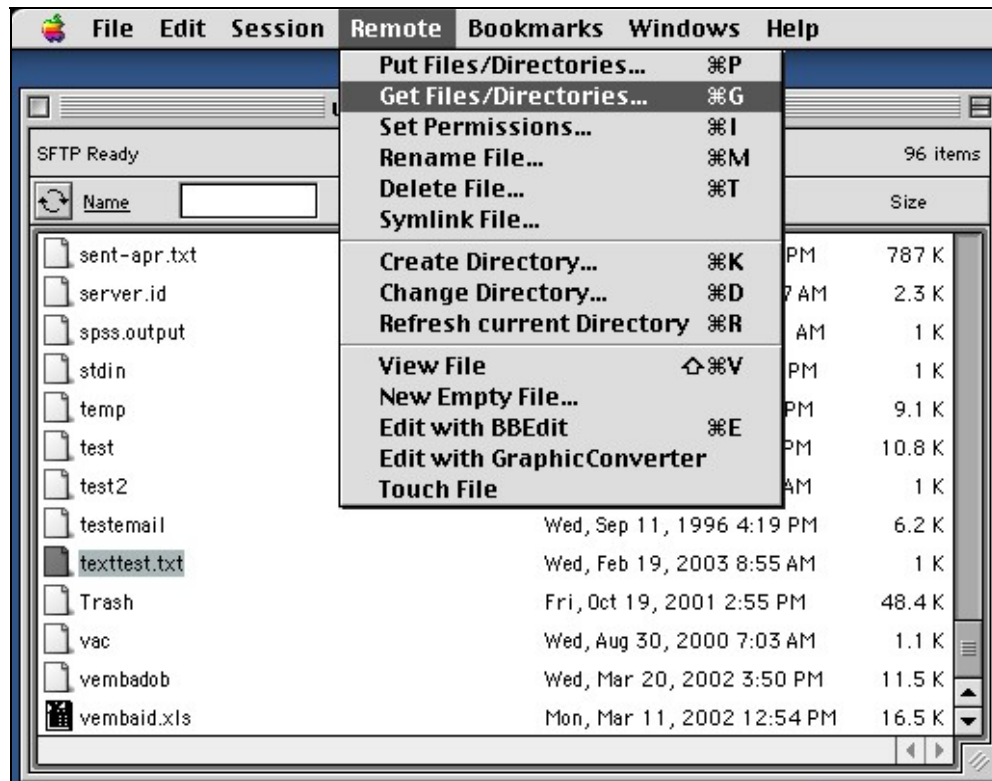


Figure 8: SFTP download

How to exit SFTP

To exit SFTP, click on the **File** menu, then select **Quit**

Getting Help

For additional assistance with SFTP, please call the ITS Help Desk at the number listed below.

For additional assistance, please phone the ITS Help Desk at (808) 956-8883,
send email to help@hawaii.edu, or fax (808) 956-2108.
Neighbor islands may call the ITS Help Desk's toll-free phone number at (800) 558-2669.

Or see the ITS Help Desk home page at www.hawaii.edu/help
The ITS walk-in Help Desk is located in
Keller 105, Keller 213, and ITS CLIC Lab on the UH Mānoa Campus.

The University of Hawai'i is an equal opportunity/affirmative action institution.