



Wireless at UH

For the Macintosh

Author: Teresa Sakata

| | |
|--|---|
| Introduction | 1 |
| MacOS X..... | 2 |
| Configuring the Network preference | 2 |
| Mac OS 9..... | 3 |
| Configuring TCP/IP..... | 3 |
| Connecting to the UH Wireless network..... | 4 |
| Macintosh PowerBooks that do not have a built-in AirPort card..... | 5 |
| Installing AirPort software..... | 5 |
| Getting Help | 6 |

Introduction

This document will show you how to connect to the UH Wireless network. For current areas of coverage, please visit

<http://www.hawaii.edu/wireless/wireless.gif>

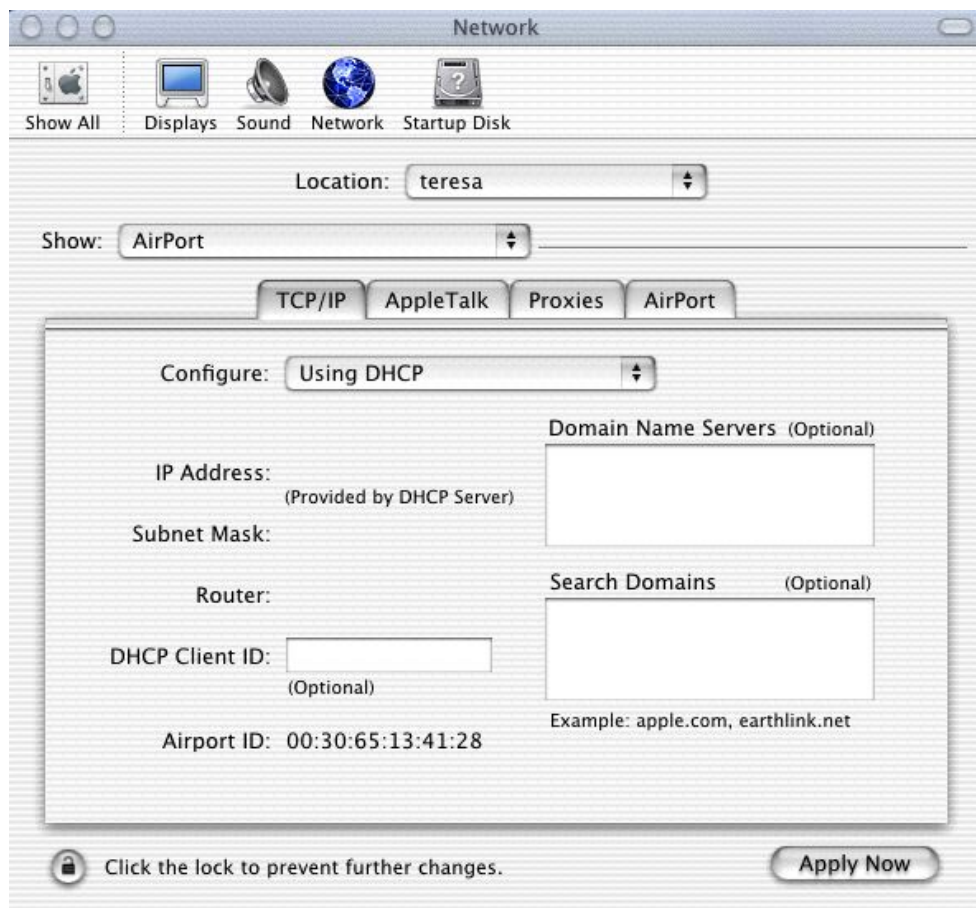
To connect to the UH Wireless network, Mac OS 9.0.4 or later and an Apple AirPort wireless card are recommended. The recommended web browser is Internet Explorer.

Mac OS X

Configuring the Network preference

1. Click on the **System Preferences** icon (located in the Dock). A window will appear. Click on the **Network** icon. If you do not have a System Preferences icon in your dock, go to the **Apple** menu and select **System Preferences...**
2. Note that “Location” will say “Automatic” for most people
 - a. Under “Show”, select **Airport**
 - b. The “Configure” option should be **Using DHCP**
If necessary, in the “Domain Name Servers” box type **128.171.3.13**
128.171.1.1

In the “Search domains” box type **hawaii.edu**
It should now look similar to this window:



Click on the **Apply Now** button to save any changes and have them take effect.

3. To close the System Preferences window, click on the red button in the upper left of the window.

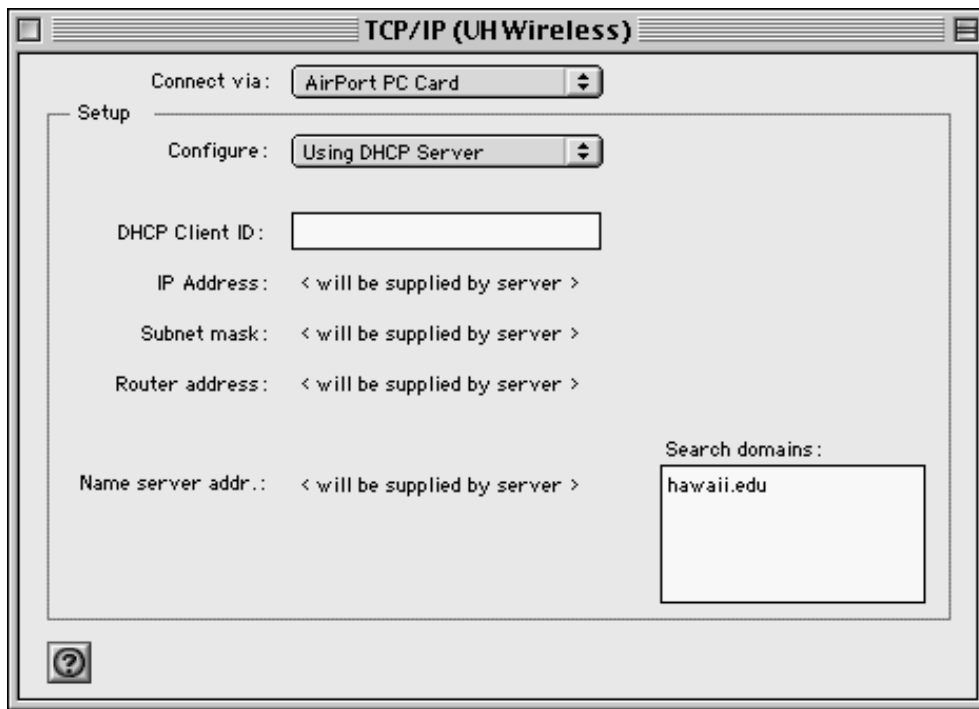
Mac OS 9

Configuring TCP/IP

1. Go to the **Apple** menu and select **Control Panels**, then select **TCP/IP**
2. Go to the **File** menu and select **Configurations**. Highlight **Default** and click on **Duplicate**. In the box that appears, type **UH Wireless** and click **OK**. Click on **Make Active**.
3. Under “Connect via:” select **AirPort PC Card** (it might just say **AirPort**)
Under “Configure” select **Using DHCP server**
If necessary, in the “Name server addr:” box type **128.171.3.13**
128.171.1.1

In the “Search domains” box type **hawaii.edu**

When you are done the window should look like this:



Close the window. When you are asked if you want to save the changes, click **Save**.

Note: When you go back to your normal location (home, office) be sure to go back to the TCP/IP control panel and change the configuration back to **Default**. If you want to use the UH Wireless network again, change the configuration back to **UH Wireless**.

Connecting to the UH Wireless network

1. (Mac OS X) Point and hold down the mouse button on the AirPort icon near the upper right of the screen. The AirPort icon looks like this:



(Mac OS 9) Point and hold down the mouse button on the AirPort icon in the control strip. The AirPort icon looks like this:



2. A menu will pop up. Select **Other...** A window will appear asking for the name and password of the network. Fill in the network name and password and click **OK**. If you do not know the network name and password, you will have to go to the following web page to find out:

<http://www.hawaii.edu/wireless/validate.html>

You will need to do this from a machine with a working network connection, such as the Keller lobby express terminals, the PC Lab (Keller 213), the CLIC Lab (Sinclair Library), or the Keller 105 Lab.

(Mac OS 9 only) If you do not see a choice for Other... in the menu, select **Open AirPort** instead. In the window that appears, check the box next to **Allow selection of closed networks**. Close the AirPort window. You should now have an Other... choice under your AirPort control strip icon.

3. Open a web browser and go to any web page. (Internet Explorer is the recommended browser.) You will be automatically directed to an authentication page. In the Username box, type in your **UH Username**. In the Password box, type your **password**. Click **Login**.

NOTICE: There is a 12 hour time limit for wireless sessions. _____

UH Username:

Password:

4. The authentication process will begin. When it is done, you should see a logout window appear, which you can minimize.

You will now be connected to the UH Wireless network and can proceed to browse the web or check your email as you normally would.

Macintosh PowerBooks that do not have a built-in AirPort card

If you have an older Macintosh PowerBook that does not support an Apple Airport card, but it has a PC Card (PCMCIA) slot, you can connect to the UH Wireless network with an Orinoco wireless card (the Gold card was tested) and Mac OS 9 (9.0.4 through 9.2.2).

Note: The Orinoco card is currently not compatible with Mac OS X. If you need to use the wireless network with your older Macintosh laptop, you either need to stay on Mac OS 9 or purchase a newer PowerBook that supports an Apple AirPort card.

If your AirPort software is already installed, your wireless card will show up on your Macintosh's desktop as "AirPort PC card". If you see "IEEE/Wavelan card" instead, this means the software is not installed.

Installing AirPort software

1. Download the AirPort software from

<ftp://ftp.hawaii.edu/pub/dss/mac/airport202.hqx>
2. When the download is finished, you should have an icon called **AirPort 2.0.2.smi** on your desktop or wherever on your Mac that you saved the file in step 1. Double click on this icon.
3. There will now be an AirPort disk icon on your screen. Double click on this icon, then double click on the **Apple SW Install** icon.
4. Click **Continue**.
5. Make sure the correct hard drive is selected (do not select your OS X drive if you have one) and click on **Select**.
6. The license agreement will appear. If you agree with its terms, click on **Continue**, then click on **Agree**.
7. The ReadMe will appear. Click on **Continue**.
8. On the following screen, click on **Start**. The AirPort software will now be installed on your laptop. When the install is done, restart your Macintosh if prompted to do so.

Once you have the AirPort software installed, you may proceed to connect to the UH Wireless by using the directions from the Mac OS 9 section of the document (page 3).

Getting Help

For more information about wireless at UH, please visit

<http://www.hawaii.edu/wireless>

For additional assistance, please phone the ITS Help Desk at (808) 956-8883,
send e-mail to help@hawaii.edu, or fax (808) 956-2108.
The Help Desk's toll-free phone number is (800) 558-2669.

Or see the ITS Help Desk home page at <http://www.hawaii.edu/help>
The ITS walk-in Help Desk is located in
Keller 105 and Keller 213 on the UH Mānoa Campus.

The University of Hawai'i is an equal opportunity/affirmative action institution.