



## Getting Started with Firefox 2.0

### For Windows 2000/XP

Author: Ryan McCalla

Revised by Mitchell Ochi

Introduction.....	1
System Requirements.....	1
Where to Get It.....	1
Installation.....	2
Configuring Firefox .....	5
Using Firefox .....	6
Uninstalling Firefox .....	14
More Information.....	14
Getting Help.....	14

### Introduction

---

This document is an introduction to Firefox 2.0, and is written for the University of Hawai'i (UH) user with a personal computer running Windows. Firefox is a free web browsing program distributed by Mozilla.

### System Requirements

---

System requirements for Firefox 2.0 can be found online at <http://www.hawaii.edu/askus/770>. Also, be sure to check the browser recommendations page for ITS supported web applications at <http://www.hawaii.edu/askus/717> to verify that Firefox will work with any of the web applications you use.

### Where to Get It

---

You can download the current ITS-supported version of Firefox at <http://www.hawaii.edu/askus/575>. Alternatively, you can download the latest version of Firefox from the Mozilla web site at <http://www.mozilla.com>. *Note that this version may differ from the ITS-supported version.*

## Installation

---

Once you have downloaded the Firefox installer to your PC, you can install it by following the instructions below.

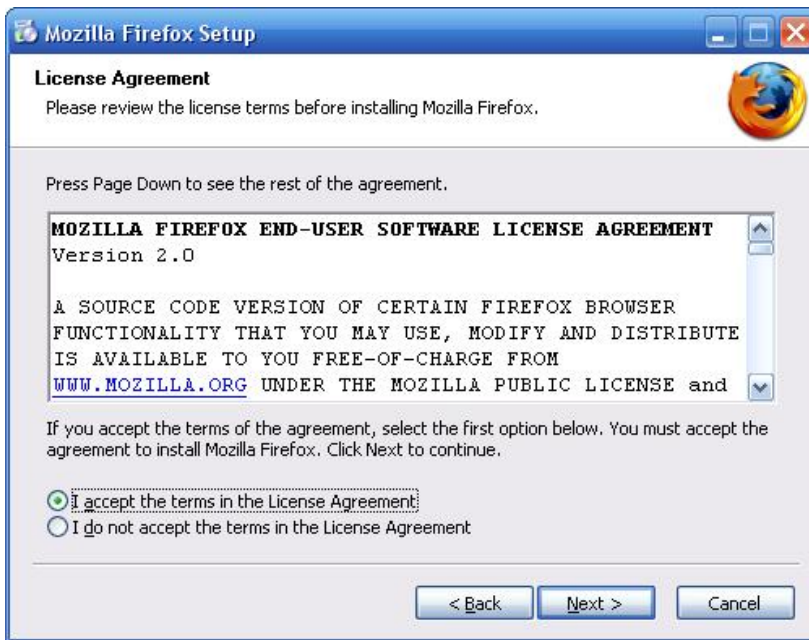
1. Double-click on the installation file that you downloaded to run the Firefox installer. You will be prompted with a security warning. Click **Run** to start the installation of Firefox.



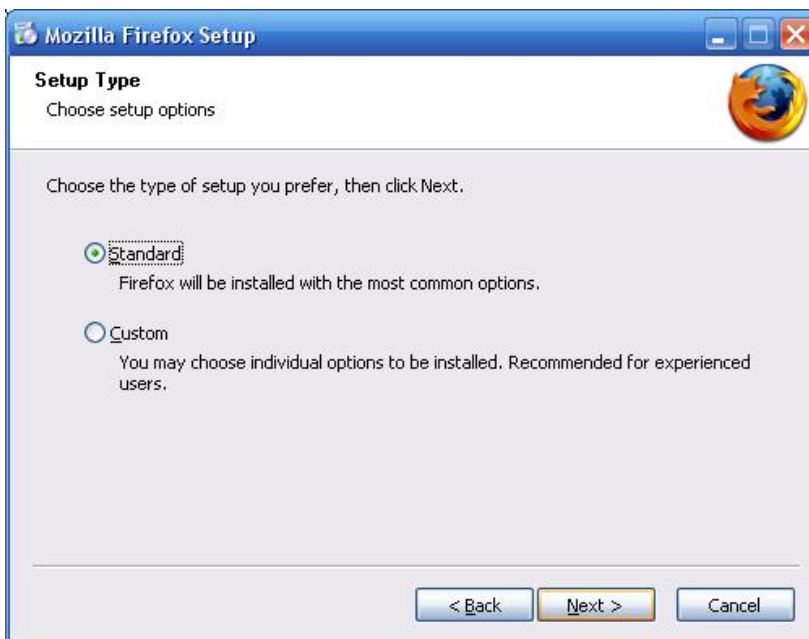
2. Click **Next** on the **Welcome to the Mozilla Firefox Setup Wizard** screen.



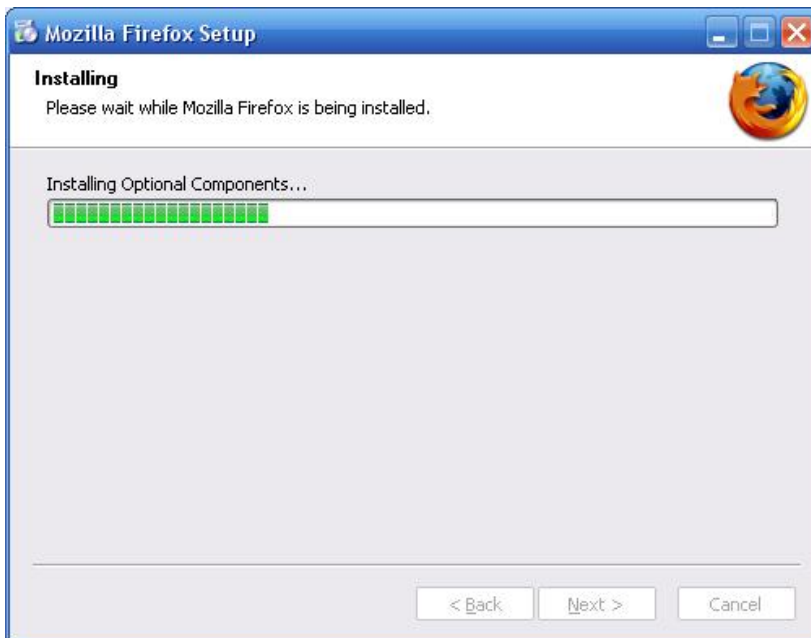
3. Read the License Agreement and select **I accept the terms in the License Agreement** and click **Next**.



4. Choose **Standard** as the setup type and click **Next**.



- The installer will then install the necessary files for Mozilla Firefox.



- After the setup completes, you will be prompted to **Launch Mozilla Firefox now**. You may uncheck the box if you do not wish to open Firefox immediately following the installation. Click **Finish**.



## Configuring Firefox

---

To launch Firefox, click on the Mozilla Firefox icon on your desktop, or select Mozilla Firefox from the **Start > Programs (or All Programs)** menu.



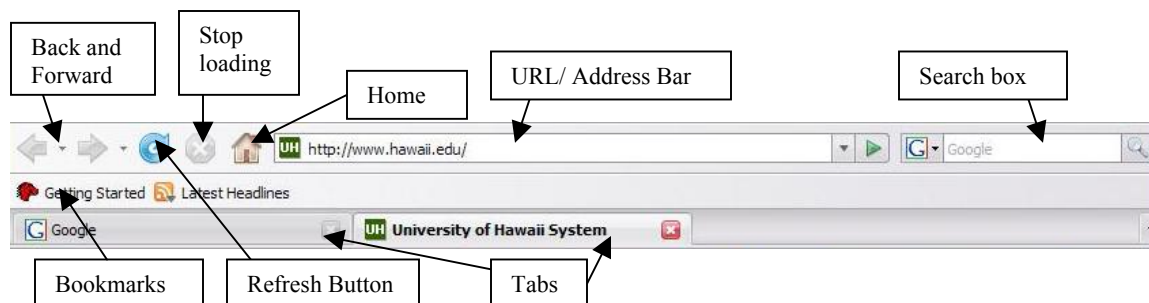
Upon opening Firefox for the first time, you will be asked if you would like to import your settings from another web browser. If you would like to import your options, bookmarks, history, and other settings, follow the on-screen instructions. If not, select **Don't import anything** and click **Next**.



You will be brought to the Firefox browser and may be prompted to have Firefox be set as the default web browser. You can choose **Yes** or **No**, whichever you desire.



## Using Firefox

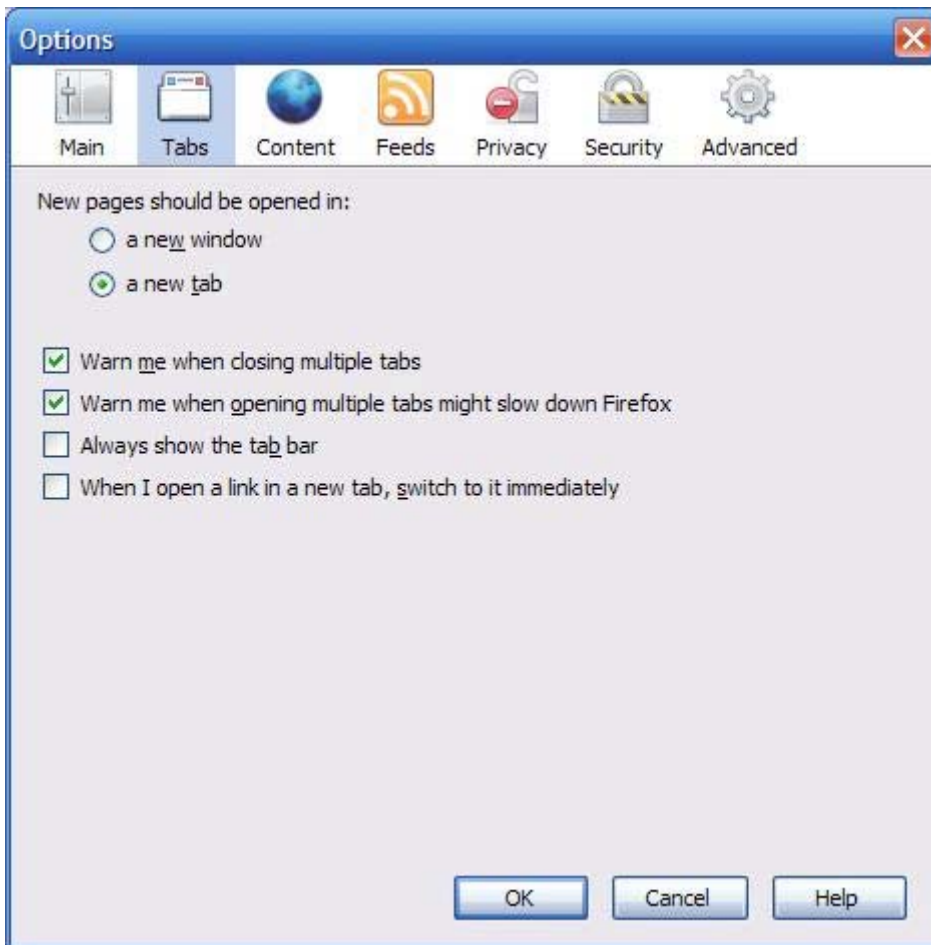


More tabs can be added by pressing **Ctrl+T** or by selecting **New Tab** from the **File** menu. A new window can be opened by pressing **Ctrl+N** or by selecting **New Window** from the **File** menu. To change various options in Firefox, select **Options** from the **Tools** menu.

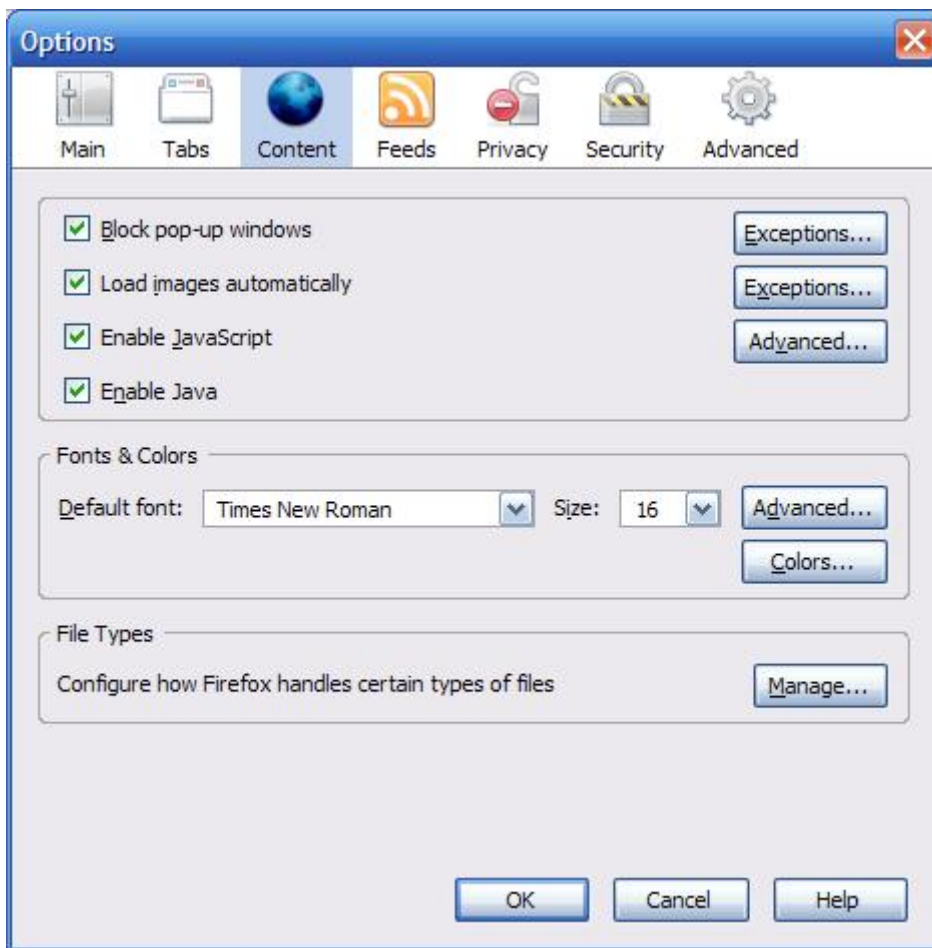
**Main** in the **Options** window is where you can set the **Home Page**, which is the page that Firefox opens automatically when it starts. You can also change how Firefox behaves for file downloads, as well as set Firefox to check to see if it is the default web browser for your computer when it starts up.



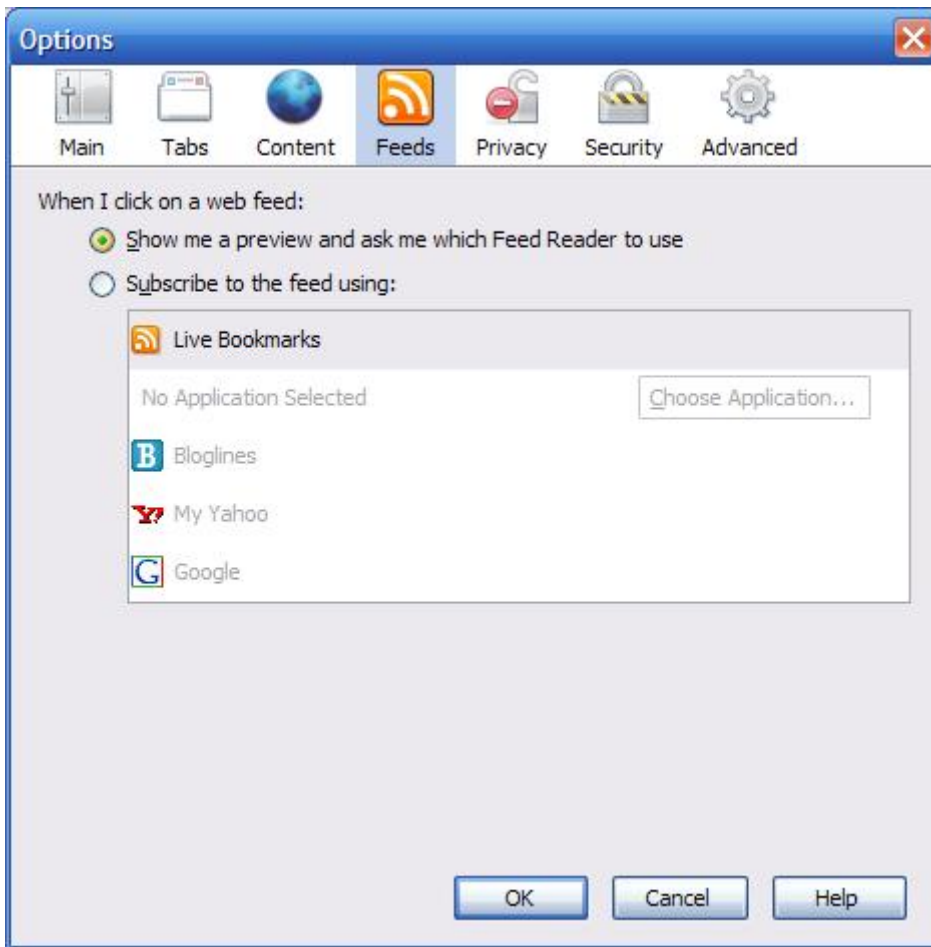
Under **Tabs**, you can determine whether or not to use tabbed browsing in Firefox. You can also manage the behavior of the tabs.



**Content** is where you can set various content-related options, such as blocking pop-up windows, loading images on web pages, using Java and JavaScript, setting default fonts and colors for Firefox to use, and setting up how Firefox handles certain file types.



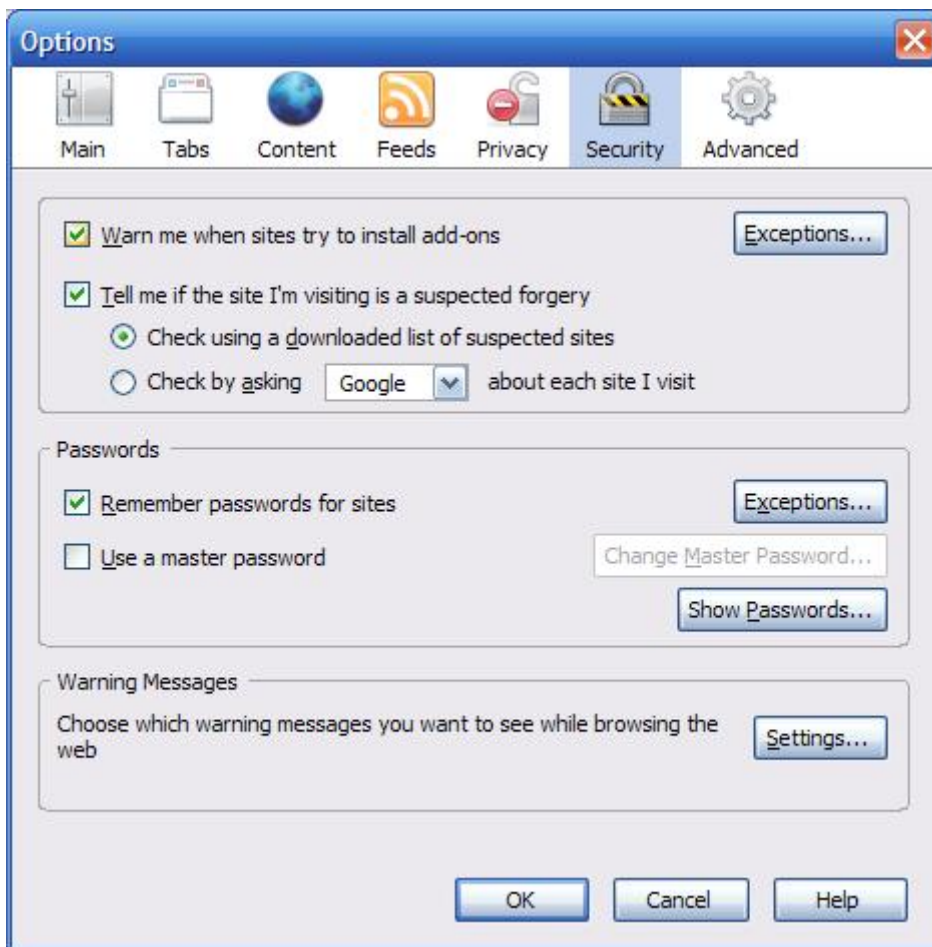
**Feeds** is where you can set the behavior for how various RSS feeds are handled.



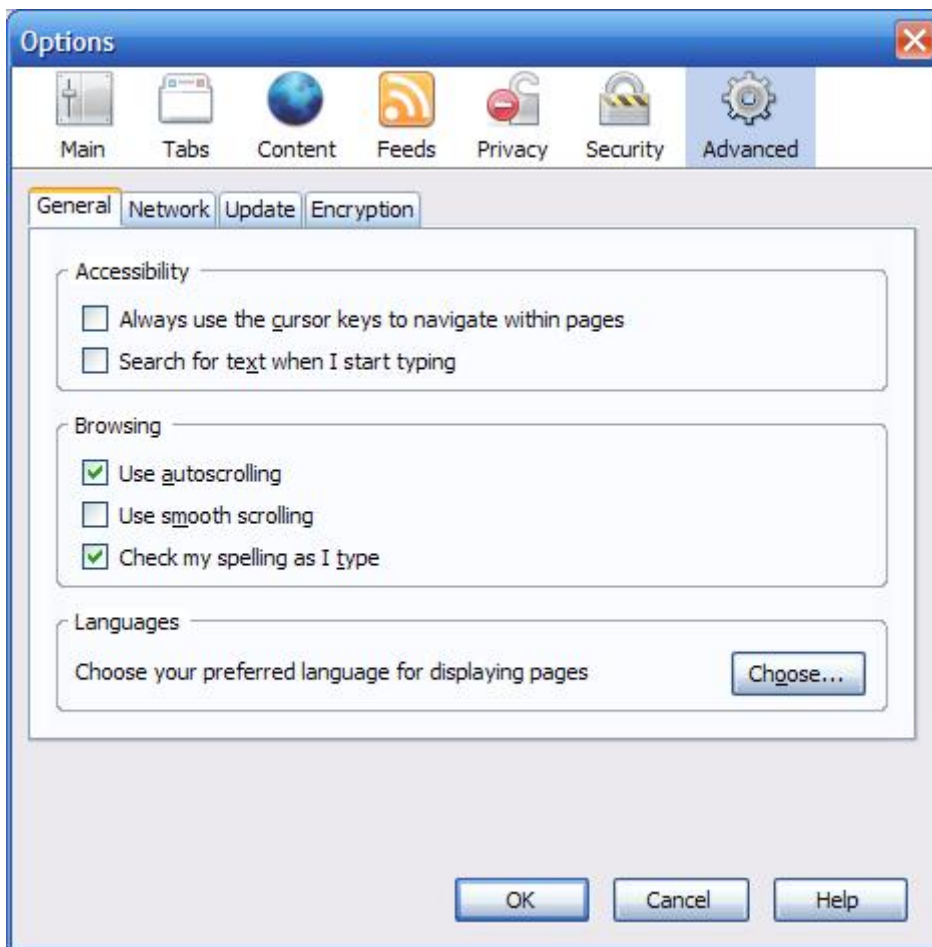
**Privacy** is where you will find the privacy settings for Firefox. This is where you can change the behavior of browser history, cookies, and private data (such as saved passwords).



Under **Security**, you can manage warning messages that Firefox uses, particularly when installing add-ons or visiting sites that may not be safe. You can also manage saved web site passwords.



**Advanced** is where you can set other preferences for Firefox. There are several tabs under **Advanced**.



- The **General** tab contains some options relating to the general use of Firefox while browsing different web pages. The options include accessibility and language options.
- The **Network** tab contains network settings that Firefox will use, including proxy settings and cache options.
- The **Update** tab contains options relating to what updates you would like Firefox to check for over the Internet. Firefox can automatically check for updates for the core web browser, as well as for any installed add-ons. If you would like this feature disabled, you may uncheck these check boxes. Under this tab, you can also configure how Firefox handles these updates when installing them.
- The **Encryption** tab contains options for what encryption Firefox can use when encountering secure web sites, and also how to proceed with security certificates that the browser encounters.

For more information on the above options, please refer to the help file within Firefox by selecting **Help Contents** from the **Help** menu.

## **Uninstalling Firefox**

---

You can uninstall Firefox by going to the **Control Panel** and choosing **Add or Remove Programs**. This will open the **Add or Remove Programs** window, where you can choose Remove for the Mozilla Firefox application. Firefox will then be removed from your computer. The default web browser will be set to Internet Explorer, if you had previously selected for Firefox to be the default browser.

## **More Information**

---

For more information on Firefox 2.0, you can visit the following web sites:

- ITS AskUs article on Firefox – <http://www.hawaii.edu/askus/770>
- Mozilla Firefox web site – <http://www.mozilla.com/en-US/firefox/>

## **Getting Help**

---

For additional assistance, please phone the ITS Help Desk at (808) 956-8883,  
send email to [help@hawaii.edu](mailto:help@hawaii.edu), or fax (808) 956-2108.  
Neighbor islands may call the ITS Help Desk's toll-free phone number at (800) 558-2669.

Or see the ITS web site at <http://www.hawaii.edu/its>  
The ITS walk-in Help Desks are located in  
Keller 105, Keller 213, the Sinclair CLIC Lab, and the ITS Hamilton Lab on the UH Mānoa  
Campus.

The University of Hawai'i is an equal opportunity/affirmative action institution.