



Getting Started With Internet Explorer 7

Author: Deanna Pasternak

Introduction	1
What's new in IE 7	1
Security Enhancements.....	1
System Requirements	2
How Do I Get It?	2
Installation Instructions.....	3
Opening IE 7 For The First Time	3
Where Did My Other Settings Go?.....	5
Uninstall IE 7.....	6
More Information.....	6
Getting Help	6

Introduction

This document is a brief introduction to the changes and security enhancements to the web browser Internet Explorer (IE) 7 for Windows XP (SP2).

Note: The ITS supported applications with corresponding browser support, is listed at:
<http://www.hawaii.edu/help/support/webapplication.html>

What's new in IE 7

Internet Explorer 7 has a different look and feel than previous versions of the browser. The interface has been redesigned and preference locations have been moved. Some of most noticeable changes are:

1. Tabbed Browsing – You can view pages in multiple tabs instead of having multiple windows open.
2. RSS Feed Integration – IE 7 allows you to subscribe to and bookmark RSS feeds that will automatically update when page content updates.
3. Enhanced Search Features – IE 7 has included a search box in the browser frame. You can use Live Search (default) or add other search sites.
4. Add-Ons – Install Add-ons from <http://www.ieaddons.com/default.aspx?cid=home&scid=0> to personalize your browser.

Security Enhancements

Internet Explorer 7 also has included improved security features to help keep you and your private information safer while browsing. Security enhancements include:

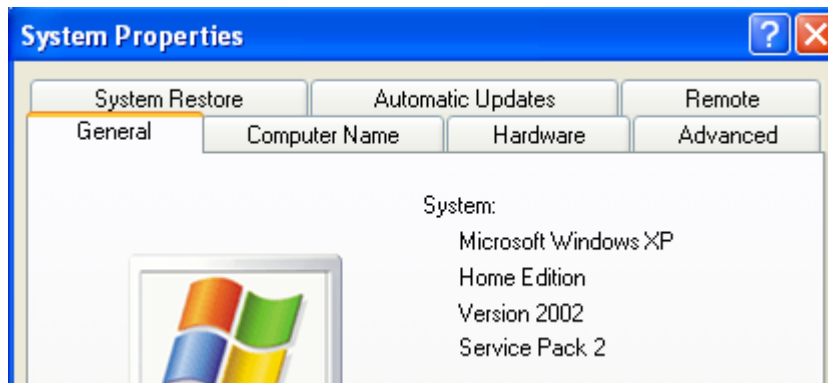
1. Phishing Filters – IE 7 includes a Phishing filter to help determine if websites are known Phishing sites and to help protect you against malicious software.
2. Active X Opt-in – IE 7 will allow you to disable most ActiveX controls on your computer. This will allow you to be in better control of what is being installed on your computer.
3. Delete Browsing History – Allows you to delete your browser history and temporary files from one location.

System Requirements

You must be running a genuine copy of Windows XP Service Pack 2 (SP2) to download Internet Explorer 7. For more information and to verify that you are running a genuine copy of Windows; go to <http://www.microsoft.com/genuine/downloads/Validate.aspx?displaylang=en>

To check if SP2 is installed

Right Click on **My Computer** and select **Properties**. On the **General** tab you will see information about your computer. You will see Service Pack 2 listed if it is installed.



If you are not running SP2 you can download it from Microsoft Update at <http://update.microsoft.com>.

Before you download Internet Explorer 7 for Windows XP (SP2), make sure that your computer meets or exceeds the following hardware requirements:

Processor: 233 MHz Pentium (Pentium processor recommended)

Operating System: Windows XP (SP2)

Memory Requirements: 87 MB minimum (128+MB recommended)

How Do I Get It?

Microsoft will distribute Internet Explorer 7 as a high-priority update through Windows Update starting November 1, 2006 over several months time. Automatic Updates will only notify users with administrative privileges on the computer.

You can download Internet Explorer yourself at the following website

<http://www.microsoft.com/windows/ie/downloads/default.mspx>

Installation Instructions

When you select to install you will be prompted with several installation screens. Once you click **Next** through them and **Accept** the license agreement, the installer will bring you to the following screen to check if your copy of Windows is genuine.



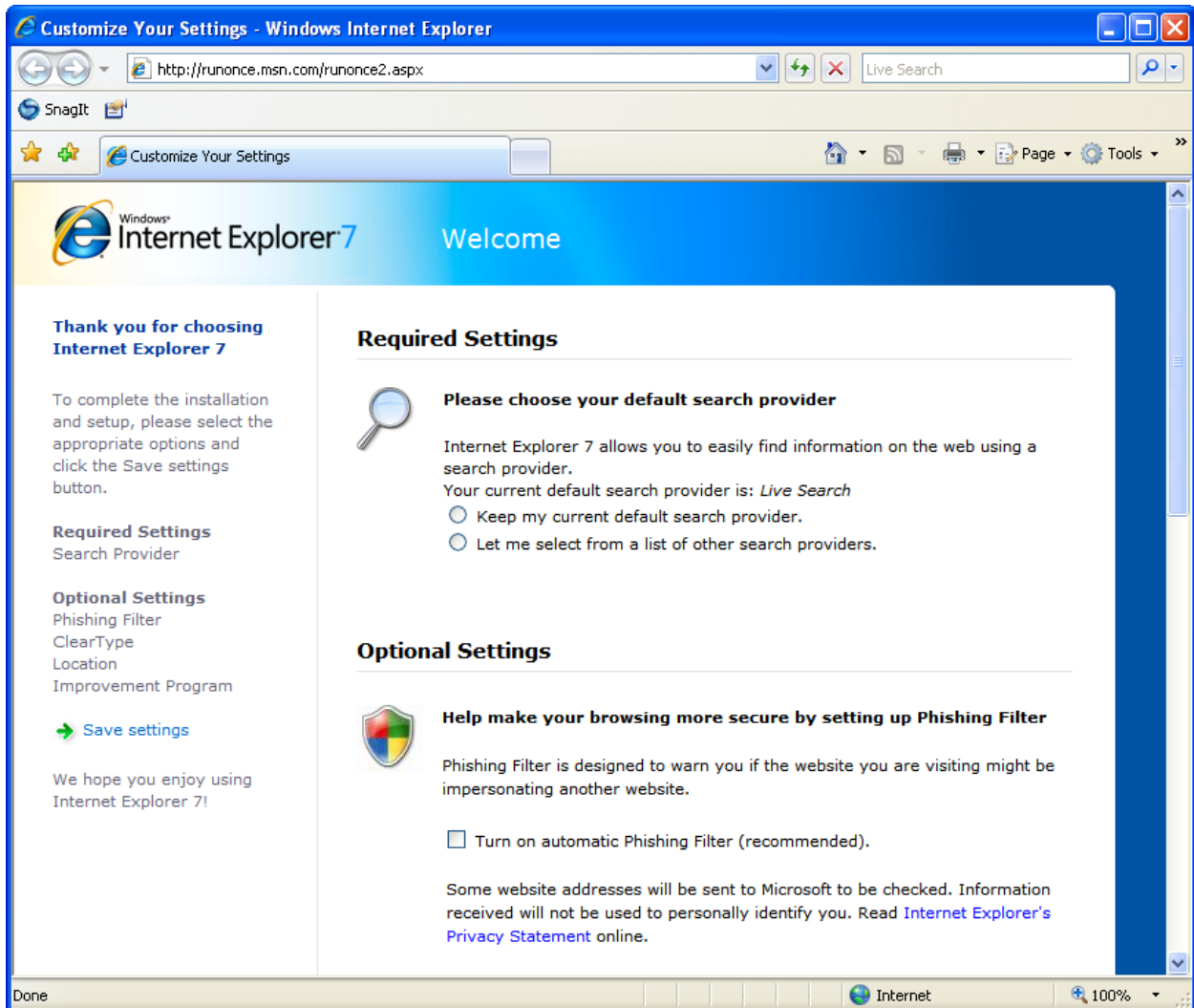
You must choose **Validate** to continue with the installation.

When the installation is complete, you must reboot your computer before you can use IE 7. The installation was successful if your Internet Explorer icon changes to the icon below.



Opening IE 7 For The First Time

The first time you open IE 7 you will be presented with the screen below. If you ignore the screen and continue to browse, you will see the screen the next time you open IE 7. This screen allows you to configure your browser.










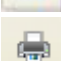






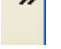
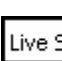
The first setting is **Required**. You must either choose to keep Live Search as the search provider or you can choose from a list of other search providers. The other settings are **Optional**. You can always change any of these settings at a later time.

The **Optional** settings include

- Turn on Phishing Filter (recommended) – Turn on the Phishing Filter to determine if a website you visit may be impersonating another website.
- See web pages more clearly – If you choose this option you can go to <http://www.microsoft.com/typography/cleartype/tuner/Step1.aspx> to configure the font for viewing websites on your computer
- Help Customize web pages for your current location – Choose the location you would like content from.
- Help improve IE: Join the customer Experience Improvement Program – If you select this option Microsoft will collect anonymous information about your browsing habits. You can stop participating at anytime.

Where Did My Other Settings Go?

Most of the icons and settings in IE7 have been changed or moved.

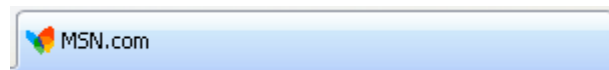
	Go back
	Go Forward
	View History
	Refresh Page
	Add new tab
	Stop Loading Page
	Search Bar Settings
	Favorites
	Go to and change Home Page
	Print and Printer Settings
	Add Favorites / Subscribe to RSS feeds
	Quick Tabs – Only appears when you have multiple tabs open. Allows you to view all of your tabs on a smaller scale.
	View RSS Feeds. If this icon turns orange it can be clicked on to view the feeds.
	Page Settings
	Internet Tools and Browser Settings. This is also where you can delete your browsing history.
	Help and MSN Messenger



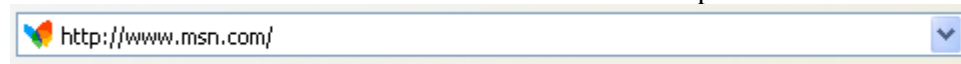
Search Bar



Example of toolbar when a Phishing website is detected.



Current Tab – Right click on tab to see more options



Address bar

Uninstall IE 7

You can uninstall Internet Explorer 7 by going to the Control Panel. Choose **Add or Remove Programs**. From here you can choose **Remove** for Internet Explorer 7 and continue to use Internet Explorer 6. Automatic Updates will re-offer IE 7 after you uninstall it. You would need to choose the “**don’t install**” option at the updates welcome screen to stop it from offering it again.

More Information

For more Information on Internet Explorer 7

Microsoft’s Internet Explorer 7 website:

<http://www.microsoft.com/windows/ie/default.mspx>

Getting Started with Internet Explorer 6

<http://www.hawaii.edu/askus/?action=view&kbid=645>

Getting Help

Click on the **Help** link (usually in the upper right hand corner of the window) for on-line help. There is extensive on-line help available. Please refer to this on-line help first for any questions not answered by this document.

For additional assistance, please phone the ITS Help Desk at (808) 956-8883,
send e-mail to help@hawaii.edu, or fax (808) 956-2108.
The Help Desk’s toll-free phone number is (800) 558-2669.

Or visit the ITS Help Desk home page at <http://www.hawaii.edu/help>

The ITS Help Desk functions are located in Keller 105, Keller 213,
and Sinclair 122 (CLIC) on the UH Mānoa Campus.

The University of Hawai’i is an equal opportunity/affirmative action institution.