



# Installing HostExplorer 10 For the PC

Author: Byron Watanabe

Requirements .....	1
Obtaining HostExplorer .....	1
Preparing to install .....	1
Installation .....	2

## Requirements

---

HostExplorer 10.0 supports the following operating systems:

Windows 98, ME, NT (service pack 6 or later), Windows 2000/XP.

Note: Windows 95 is not supported by HostExplorer 10.0.

You should also have about 36MB of free disk space when installing from CD-ROM. You will need additional space if you are downloading the software.

## Obtaining HostExplorer

---

You can obtain a copy of HostExplorer by picking up the ITS CDROM from any of our labs -- the Hamilton Library lab (Hamilton Library 2nd floor addition), the Keller 105 lab, the PC lab (Keller 213), or the CLIC lab (Sinclair 122).

You may also download HostExplorer from the following web page:

<http://www.hawaii.edu/help/software/pc/hexplorer.html>

You will need a UH Username and password to download the software. Once you've downloaded the software, there will be a file named "hostexplorer10.zip" on your desktop. Extract the files within this zipped file to another folder on your desktop.

## Preparing to install

---

**Important Note: Please uninstall any prior version of HostExplorer that's on your PC, before installing version 10.0. (Use the "Add or Remove Programs" in Control Panel)**

System and shared files currently in use cannot be updated. Close all applications before proceeding with the installation.

Note: You will need administrator privileges to install some portions of the product for Windows NT/2000/XP.

HostExplorer 10.0 uses Windows Installer. It is included with Windows 2000/XP and Windows Me. If Windows Installer is not present, then Hummingbird Setup Wizard installs and configures the service. You may be prompted to restart the PC before the installation can continue.

## Installation

---

Insert the ITS CDROM into your PC's CDROM drive. The CD's menu will appear. Click on **Install Software**, then click on **Install HostExplorer 10**.

If the menu doesn't appear, click on the **Start** button and select **Run**. Click on the **Browse** button and locate your CDROM drive (it's usually the D: drive). Double click on the **internet** folder, then the **HostExplorer 10** folder, then the **HostExplorer** folder, then the **x86** folder. Select **setup**, click on **Open**, and then **OK**.

If you downloaded HostExplorer from the web, open the folder that contains the extracted zip files, and double click on the **setup** icon.

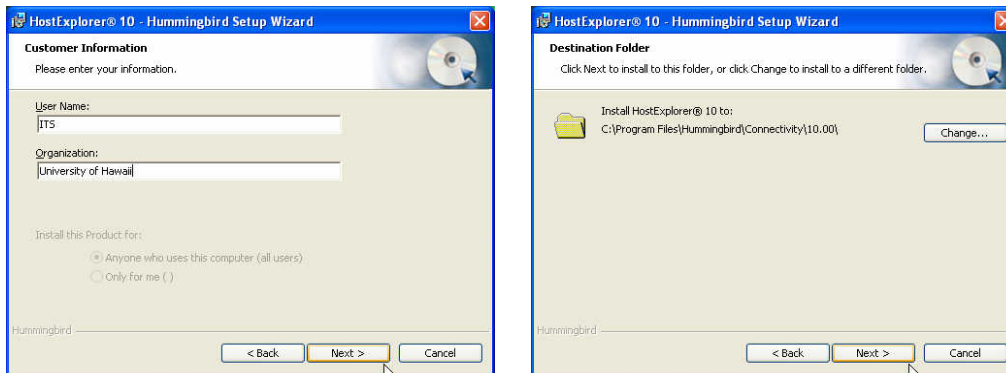
The following screen will appear. Click **Next** to continue.



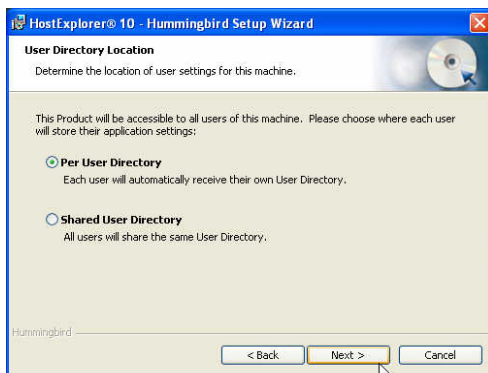
Select "I accept the terms in the License Agreement" and click on **Next**.



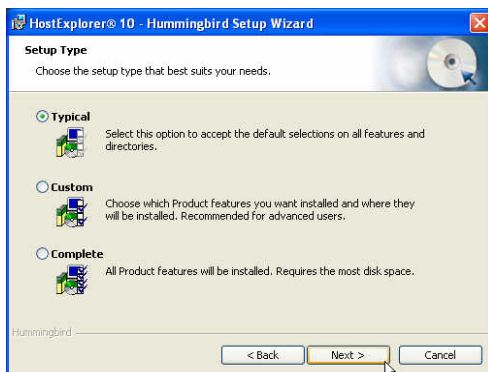
Enter a **User Name** and **Organization**, and then click on **Next**. On the following screen, click **Next** to accept the default destination folder.



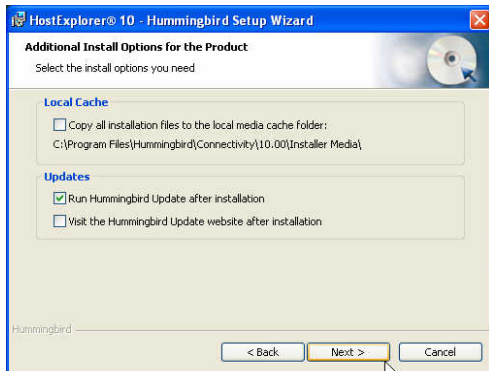
If you are using the Windows NT/2000/XP platforms, Hummingbird Setup Wizard prompts you to choose between installing the product on the computer for the currently logged in user, or for all users. For most people, choose the **Per User Directory** option.



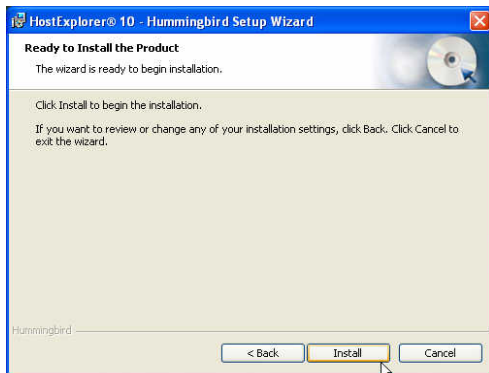
Select **Typical** installation and click on **Next**.



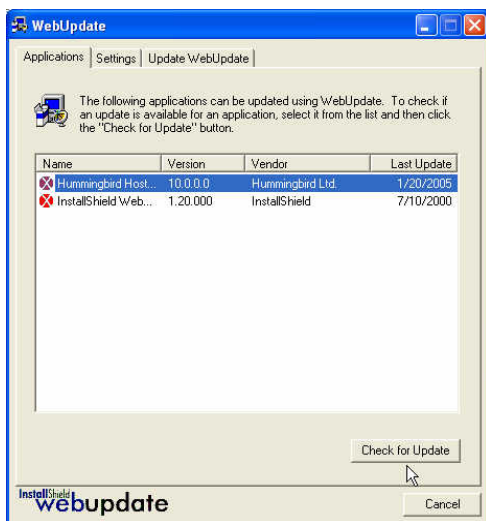
You can click on **Next** to continue (for most users). You can modify the installation if you wish. Check off **Hummingbird Update** to get the latest software updates and click on **Next**.



Click on **Install** to begin the installation process.



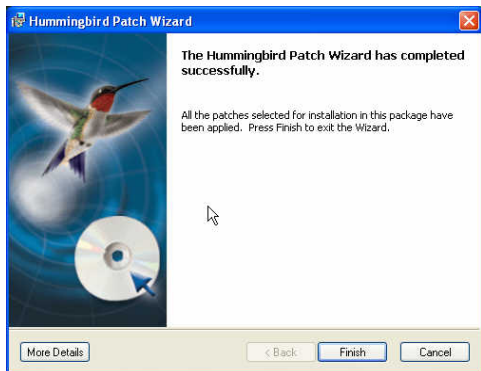
You will see the following window once the install has completed. This will allow you to get the updates to HostExplorer. Highlight **Hummingbird HostExplorer** and click on **Check for Updates**.



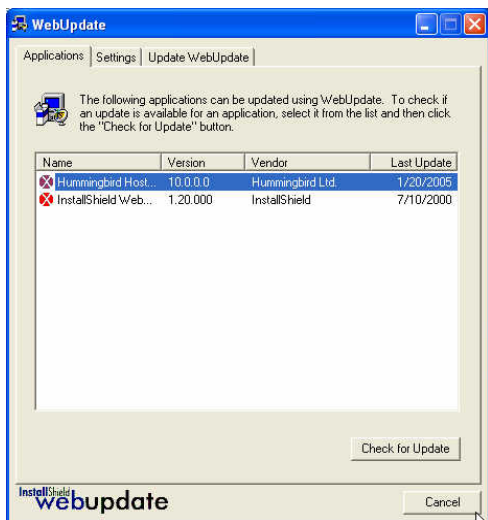
You should see a window similar to below. Click on **Yes** to get the latest updates.



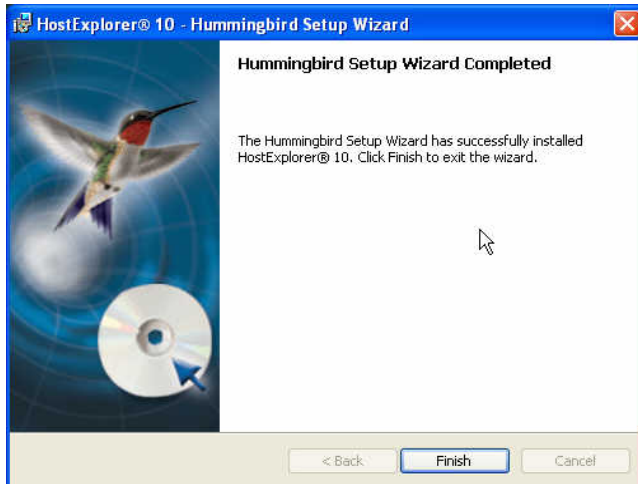
You should see the following window once the download and install of the updates are complete. Click on **Finish**.



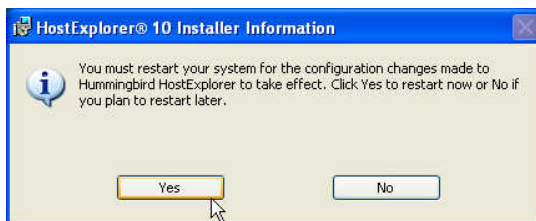
Click on **Cancel** to exit the WebUpdate window.



Click on **Finish** to close the install program.



Click **Yes** to restart your computer.



You are now ready to use HostExplorer! This version has been modified so SSL is automatically turned on and the default 3270 session points to the mainframe.

For additional assistance, please phone the ITS Help Desk at (808) 956-8883,  
send e-mail to [help@hawaii.edu](mailto:help@hawaii.edu), or fax (808) 956-2108.  
The Help Desk's toll-free phone number from the Neighbor Islands is (800) 558-2669.

Or visit the ITS Help Desk home page at <http://www.hawaii.edu/help>

The ITS Help Desk functions are located in Hamilton Library (2nd floor addition), Keller 105,  
Keller 213, and Sinclair Library 122 (CLIC) on the UH Mānoa Campus.

The University of Hawai'i is an equal opportunity/affirmative action institution.