



Wireless Network

For Windows XP

Author Darren Kato

OVERVIEW1

GETTING THE NETWORK INFORMATION.....1

WIRELESS CONFIGURATION2

CONNECTING TO THE NETWORK.....3

GETTING HELP4

Overview

The University of Hawai'i offers a wireless network system for its members to utilize. This network will allow users to fully utilize the Internet anywhere within the transmitter's range. In order to use this system you will need a wireless network card. This document describes how to configure a computer running Windows XP to access the wireless network.

This document assumes that you have already installed the drivers for the PC Card. To install the drivers, please follow the instructions in your manual.

In this document when you are asked to "click," assume it is a left mouse button click. When you need to use the right mouse button, you will be told to do a "right-click." When you are asked to highlight something, click once on the item so it is highlighted. Words in Helvetica bold font (**like this**) represent what you should see on your screen. Words in Courier bold font (**like this**) represent what you should type.

Getting the Network Information

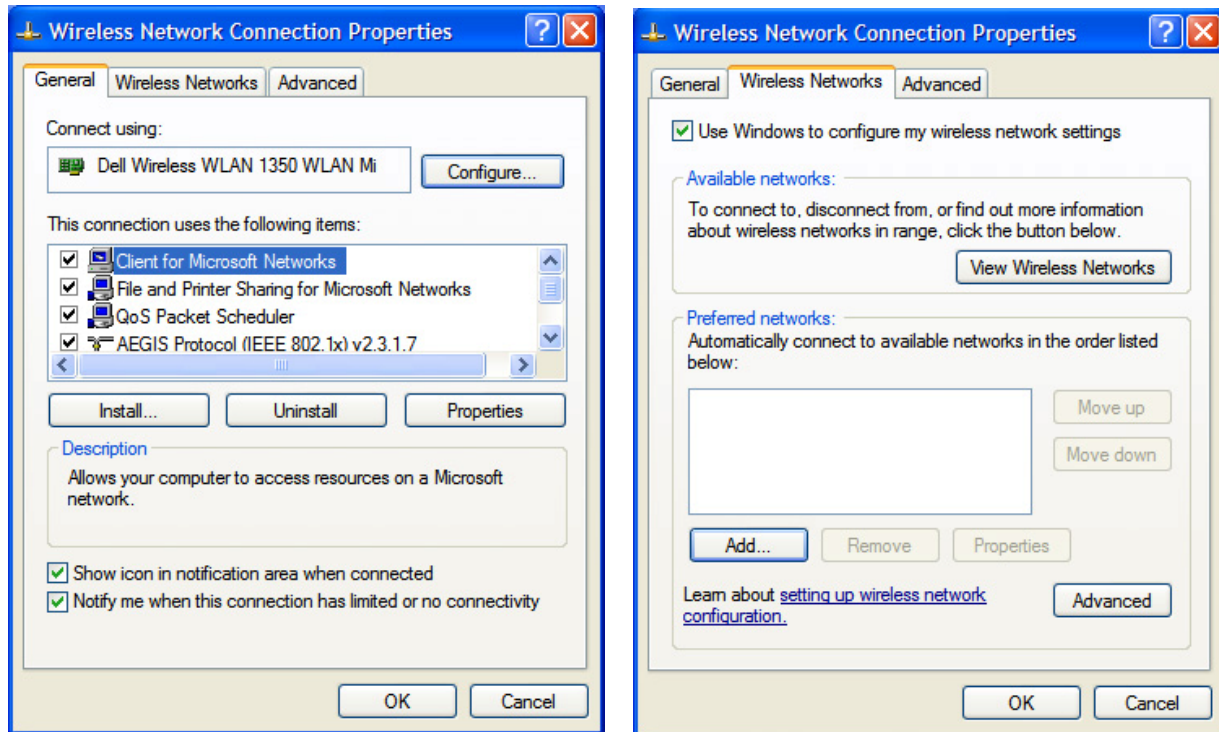
To use the UH Mānoa Wireless Network, you will need to obtain the **Network (SSID) Name** and **Password (WEP Encryption Key)**. These values can be obtained by logging into

`http://www.hawaii.edu/account`

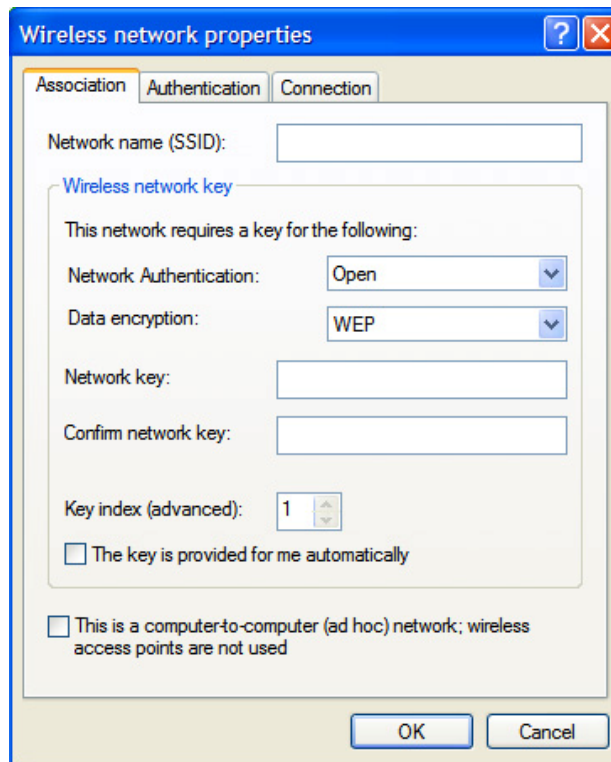
with your UH Username and password. Once logged in, under the heading: **Other**, please click on **UHM Wireless Network Settings**. Take note of the **Network Name** and **Password**. You will need to input the values into the **Configuration Manager**. Internet connected computers are available at the ITS walk-in Help Desk (Labs) listed at the end of this document. If you do not know your UH Username and password, the ITS Help Desk can also assist you.

Wireless Configuration

You will need to input the Network Name (SSID) into the Wireless Network Properties. To access the wireless properties, click on **Start > Control Panel > Network Connections**. Right-click on **Wireless Network Connection** and select **Properties**.



When a window called **Wireless Network Connection Properties** appears, select the **Wireless Networks** tab. Make sure **Use Windows to configure my wireless network connection** is checked then select **Add** under **Preferred networks**.



When the **Wireless network properties** window appears, type the **Network name (SSID)**. The **Network Authentication** should be set to **Open**, and **Data encryption** should be set to **WEP**. To type in the **Network key**, uncheck **The key is provided for me automatically**, and enter the password you obtained earlier in the **Network key** and **Confirm network key** boxes. Click **OK** to close the **Wireless network properties** page, and click **OK** to close the **Wireless Network Connection Properties** page.

Note: Some wireless network cards (e.g. most linksys cards) do not work by typing in the text password (also called WEP Encryption key). If this happens, enter in the hexadecimal equivalent as the **Network key** and **Confirm network key**. (You should have obtained this information earlier as detailed in the **Getting the Network Information** section of this document.)

Connecting to the Network

Once you have configured your computer to connect to the UH wireless network, you must log in before you are able to use the Internet, i.e. email, SSH, etc. To log onto the network, you will need to open an Internet Browser, i.e. Internet Explorer or Netscape. Once your browser is open, you will automatically be directed to the wireless login page. Please enter your UH Username and password. After the system verifies your eligibility, you will have a page stating that you are now logged on. To logoff the wireless network, click on the **Logoff** button.

A coverage map of where you can access the wireless network can be found at:

<http://www.hawaii.edu/wireless>

Getting Help

Please visit our frequently asked questions page for more information:

<http://www.hawaii.edu/wireless/faq.html>

For additional assistance, please phone the ITS Help Desk at (808) 956-8883,
send email to **help@hawaii.edu**, or fax (808) 956-2108.
Neighbor islands may call the ITS Help Desk's toll-free phone number at (800) 558-2669.

Or see the ITS Help Desk home page at **www.hawaii.edu/help**
The ITS walk-in Help Desks are located in
Keller 105, Keller 213, and the ITS Hamilton Lab on the UH Mānoa Campus.

The University of Hawai'i is an equal opportunity/affirmative action institution.