

## SPECIAL EVENTS:

### THE SOUND OF ECSTASY AND NECTAR OF ENLIGHTENMENT

Buddhist Ritual Song and Dance from Korea

**Oct 8 at 7:30pm**

Ancient chants, drum and cymbal dances, and the elaborately costumed "Butterfly Dance" from the sacred Young San ceremony are offered in concert by Korean monks of the Young San Preservation Group.

Cosponsored by UHM Outreach College and the Korea Society.

ADVANCE TICKET PRICES: \$27 Regular; \$22 Seniors, Military, UH Faculty/Staff, Students; \$17 UHM Students. *All service fees included.*

Ticket prices will be \$3 higher at the door.

### A CONCERT OF CHINESE THEATRE SONG

**Feb 8 at 8pm**

Special performances of Jingju (Beijing opera) and Kunqu by master Jingju artists Lu Genzhang, Zhang Ling, and Zhang Xigui of the Jiangsu Province Jingju Company and members of the Chinese Opera Association of Hawai'i and the Hawai'i Rainbow Kunqu Society. This will be the first public performance of Kunqu song in Hawai'i in over 20 years.

\$18 Advance Super Saver; \$22 Regular, \$20 Seniors, Military, UH Faculty/Staff; \$15 Students; \$5 UHM Students with ID.

### FROM THE HORSE'S MOUTH HAWAII

**March 19 & 20 at 8pm**

Twenty dance professionals from Hawai'i collaborate, each telling a story from their life. New York-based choreographers Tina Croll and Jamie Cunningham will help create this once-in-a-lifetime show. Cosponsored by Tim Bostock Productions.

\$22 Advance Super Saver; \$30 Regular, \$25 Seniors, Military, UH Faculty/Staff; \$20 Students; \$15 UHM Students with ID.

## TICKET PURCHASE:

The Kennedy Theatre Box Office will be open M-F from 10:30am - 12:30pm during limited sale periods only.

**Beginning Sept 14** regularly-priced tickets may be purchased online at [www.etickethawaii.com](http://www.etickethawaii.com) 24 hours a day, by phone by calling 944-2697 M-F from 9am-5pm and also at outlets: UHM Campus Center, OCET at Windward CC, Rainbowtique, and Stan Sheriff Center Ticket Office.

**All service charges are included in advertised prices.**

Group Discounts are available for groups of 10 or more for mainstage events. Contact the Box Office for more information.

## BOX OFFICE AND HOUSE RULES:

For seating charts, order forms, accessibility access and complete information on Box Office and House Rules please visit [www.hawaii.edu/kennedy](http://www.hawaii.edu/kennedy) and click on "Box Office" or call 956-7655 for more information.

## A NOTE FROM THE CHAIR:

In spite of the economic woes of the State of Hawai'i and the University we are determined to provide a full season of exciting theatre and dance works for you to enjoy and for our students to experience. It will not be easy. We have reduced our production budgets wherever we can while still maintaining the production quality we believe in.

Box Office hours at Kennedy Theatre will be reduced so we will rely on other services where we can, such as [www.etickethawaii.com](http://www.etickethawaii.com), the 944-2697 phone line and etickethawaii outlets. We hope this will not impact your ability to obtain tickets and yet will allow us to operate on a tighter budget.

Your support will keep us going through these difficult times. We hope you will continue to purchase tickets, attend performances and consider giving a donation to help with student scholarships and rising production costs. Our lights will still be shining brightly!

*W. Dennis Carroll*

W. Dennis Carroll

Department of Theatre and Dance

College of Arts and Humanities

University of Hawai'i at Mānoa  
Kennedy Theatre  
Department of Theatre and Dance  
1770 East-West Road  
Honolulu, HI 96822

Non-profit Org.  
U.S. Postage  
PAID  
Honolulu, Hawai'i  
Permit No. 278



Graphic Design by Brett T. Botbyl

## PRIME TIME IN THE EARLE ERNST LAB THEATRE:

**FALL Footholds - Oct 21, 22, 23, 24 at 8pm Oct 25 at 2pm**

The latest work from MFA and BFA dance students as well as new student choreography.

**ETTA JENKS - Dec 2, 3, 4, 5 at 8pm Dec 6 at 2pm**

By Marlane Gomard Meyer Directed by Rikki Jo Hickey  
A theatrical montage of one woman whose journey to become a Hollywood star leads her into the world of porn movies. This play contains adult language and content.

**APPALACHIA HAWAII' I - Feb 24, 25, 26, 27 at 8pm Feb 28 at 2pm**

By Terri Large Madden  
A Caucasian military family with Appalachian roots living in Hawai'i Kai has very little in common with a local Pearl City family during the early 1970s until they learn their sixteen-year-old daughter is "hapai" by the local family's son.

**SPRING Footholds - April 14, 15, 16, 17 at 8pm April 18 at 2pm**

The spring finale shows off the work of this year's talented group of student dancers and choreographers.

**Prime Time Ticket prices:**

\$15 Regular; \$14 Seniors, Military, UH Faculty/Staff; \$12 Students; \$5 UHM Student with ID (*All service fees included.*)

Tickets for Prime Time are available online, at outlets, at 944-2697 beginning Sept. 14. Tickets available at Kennedy Theatre the week of performances.

## LATE NIGHT IN THE EARLE ERNST LAB THEATRE:

**NOCTURNAL WANDERER - Sept 12, 18, 19 at 11pm Sept 13 at 8pm**

By Gao Xingjian Directed by Ron Gilliam  
Through his subconscious, Sleepwalker encounters various individuals that test both his faith and his desire to resist ungodly temptation. A modern day Everyman.

**EXPOSED - Nov 14, 20, 21 at 11pm Nov 15 at 8pm**

*This is a Play* by David MacLvor, directed by Amy Healey  
*The Natalia Gallery*, a dance project directed by Rebecca McGarvey  
EXPOSED will give the audience insight into what makes two performance pieces tick: Dances inspired by the architectural photography of Natalia Ibarra-Blomgren, and the dialogue in *This is a Play* takes the saying "Do what I mean, not what I say" literally.

*Late Night's Spring Schedule to be announced in November!*

**Ticket prices for Late Night:**

\$10 Regular; \$8 Seniors, Military, UH Faculty/Staff, Students; \$5 UHM Students with ID (*All service fees included.*)

Tickets for Late Night Theatre available only at the door beginning one hour before curtain.

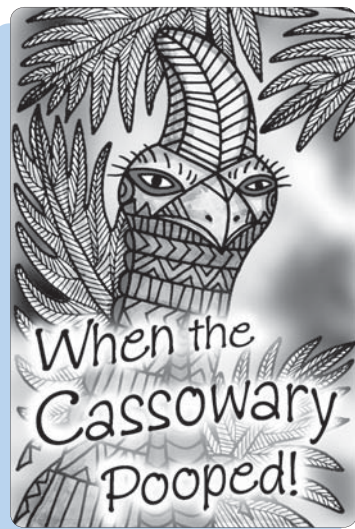


# KENNEDY THEATRE

2009 - UNIVERSITY OF HAWAII' I AT MĀNOA - 2010

*The Lights are Bright!*

Oct 2, 3 at 7:30pm Oct 4 at 1:30pm & 4pm



## When the Cassowary Pooped

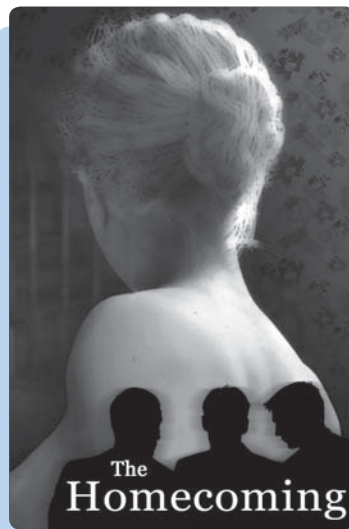
Adapted and directed by Tamara Montgomery  
Based on the children's book by Tamara Montgomery, with illustrations by Joseph D. Dodd.

Find the giant, endangered Cassowary bird as he hides from audience and players in this delightful environmental tale. Puppets and magical effects combine with coconut "robber" crabs, birds of paradise and hip hop tree kangaroos to tell the humorous tale of how the Cassowary's "poop" helps create the New Guinea rainforest. For children ages 4-8 and young at heart adults.

Daytime performances for school groups on Sept 28 - Oct 1. Call 956-2598 for information.

\$12 Advance Super Saver; \$15 Regular; \$14 Seniors, Military, UH Faculty/Staff; \$12 Students, Children; \$5 UHM Students with ID. All service fees included.

Nov 13, 14, 20, 21 at 8pm Nov 22 at 2pm



## The Homecoming

By Harold Pinter  
Directed by Glenn Cannon

A 70-year-old father lives in a seedy house in London with his brother and two adult sons. Into this volatile household enters the eldest son and his attractive young wife. Sexuality and a struggle for power, laced with moments of outrageous comedy, drive this play. Nobel Prize winner Harold Pinter is regarded as one of Great Britain's finest playwrights, and *The Homecoming* is generally accepted as one of his best plays.

\$16 Advance Super Saver; \$20 Regular; \$18 Seniors, Military, UH Faculty/Staff; \$12 Students; \$5 UHM Students with ID. All service fees included.

Feb 5, 6, 10, 11, 12, 13 at 8pm Feb 7, 14 at 2pm



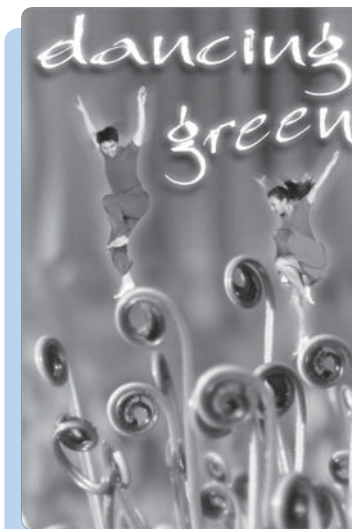
## The White Snake

Adapted and taught by Lu Genzhang, Zhang Ling, and Zhang Xigui  
Artistic supervision by Madam Shen Xiaomei  
Musical direction by Frederick Lau  
Translated by director Elizabeth Wichmann-Walczak and Hui-mei Chang

The legendary snake spirit descends to earth as a beautiful woman, marries a handsome young man, and then must fight to save their marriage in the face of supernatural attacks from a powerful monk who believes she is an evil demon. This well-known Jingju (Beijing "opera") features intense combat, lively Jingju tunes, and lyrical melodies directly derived from classical Kunqu (Kun "opera"), which was proclaimed a Masterpiece of the Oral & Intangible Heritage of Humanity by UNESCO in 2001.

\$18 Advance Super Saver; \$22 Regular; \$20 Seniors, Military, UH Faculty/Staff; \$15 Students; \$5 UHM Students with ID. All service fees included.

Mar 11, 12, 13 at 8pm Mar 14 at 2pm



## Dancing Green

Annual Dance Concert  
Choreography by UH Faculty and Guest Artists  
Performance by UHM Students

*Dancing Green* takes sustainability to the stage with dances created on environmental themes. Thrift and elegance can indeed go hand in hand! Partnering with a variety of community and campus organizations, *Dancing Green* offers a fun and enriching dance theatre experience with a clean conscience.

\$16 Advance Super Saver; \$20 Regular; \$18 Seniors, Military, UH Faculty/Staff; \$12 Students; \$5 UHM Students with ID. All service fees included.

Apr 30, May 1 at 7:30pm May 2 at 2pm



## THE JUDITH OF SHIMODA

By Bertolt Brecht  
Translated by Markus Wessendorf  
Directed by Paul T. Mitri

This rediscovered and restored play receives its English language world premiere. Brecht tells the story of a geisha who is asked by Japanese authorities to serve the American consul and prevent him from bombing their city. Although Okichi becomes a heroine of Japanese patriotism, her real life is ruined. A timely tale about how society builds up and tears down its heroes.

plus:  
**MAHAGONNY SONGSPIEL**

Libretto by Bertolt Brecht; Music by Kurt Weill  
Directed by Henry Akina

As a special prelude to *Judith*, The Mae Z. Orvis Opera Studio of the Hawai'i Opera Theatre will perform "The Little Mahagonny." In this glimpse of the full-length opera, boxing, eating, and sex are the cornerstones of this anti-utopia.

Presented in conjunction with the 13th Symposium of the International Brecht Society on 'Brecht in/and Asia' at UHM May 19-23.

For more information visit:

<http://manoa.hawaii.edu/brecht2010/>

\$16 Advance Super Saver; \$20 Regular; \$18 Seniors, Military, UH Faculty/Staff; \$12 Students; \$5 UHM Students with ID. All service fees included.

## Advance Supersaver Tickets For Mainstage Performances!

Reduced price Supersaver Tickets are on sale beginning July 13.  
Order online at [etickethawaii.com](http://etickethawaii.com), visit [www.hawaii.edu/kennedy](http://www.hawaii.edu/kennedy) to download an order form, or call 956-7655 to have an order form mailed to you. Deadline for Supersaver Tickets is Sept 5.

## SPECIALS FOR UH MĀNOA STUDENTS

UHM Students are eligible for reduced prices and special buy-one-get-one free nights.

Go to the website or call 956-7655 for information.

UHM Validated Photo ID required for special pricing.

These special UHM ticket programs are generously funded by the Student Activity and Program Fee Board.