

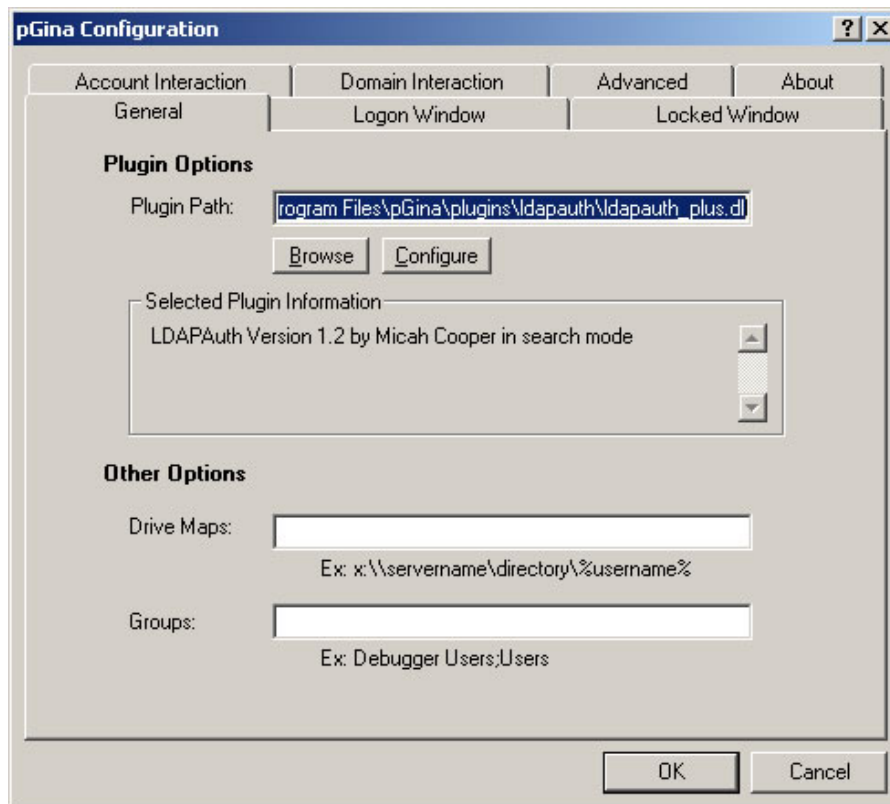


Configuring pGina for LDAP Authentication For Windows XP

pGina Installation Instructions 1
Configure pGina 2

pGina Installation Instructions

1. Install pGina using the installer file(pGina176.exe).
 - a. Install pGina in the Program Files directory: C:\Program Files\pGina
2. Install ldapAuth12.exe into the plugins folder in the pGina folder.
 - a. C:\Program Files\pGina\plugins\ldapauth\
3. Configure pGina to use the ldapAuth plugin as the default plugin.



Configure pGina

Click on the **Configure** button on the above screen and input the following data in the appropriate fields:

- LDAP Server:** ldap1.its.hawaii.edu
- Check the **Use SSL** checkbox.
- Port:** 636
- Admin User:** enter your special DN in this box (provided by ITS IAM – for student authentication)
- Admin Password:** enter the password you obtained from ITS IAM
- Click on the **Search Mode** option
- Contexts:** ou=People, dc=hawaii, dc=edu

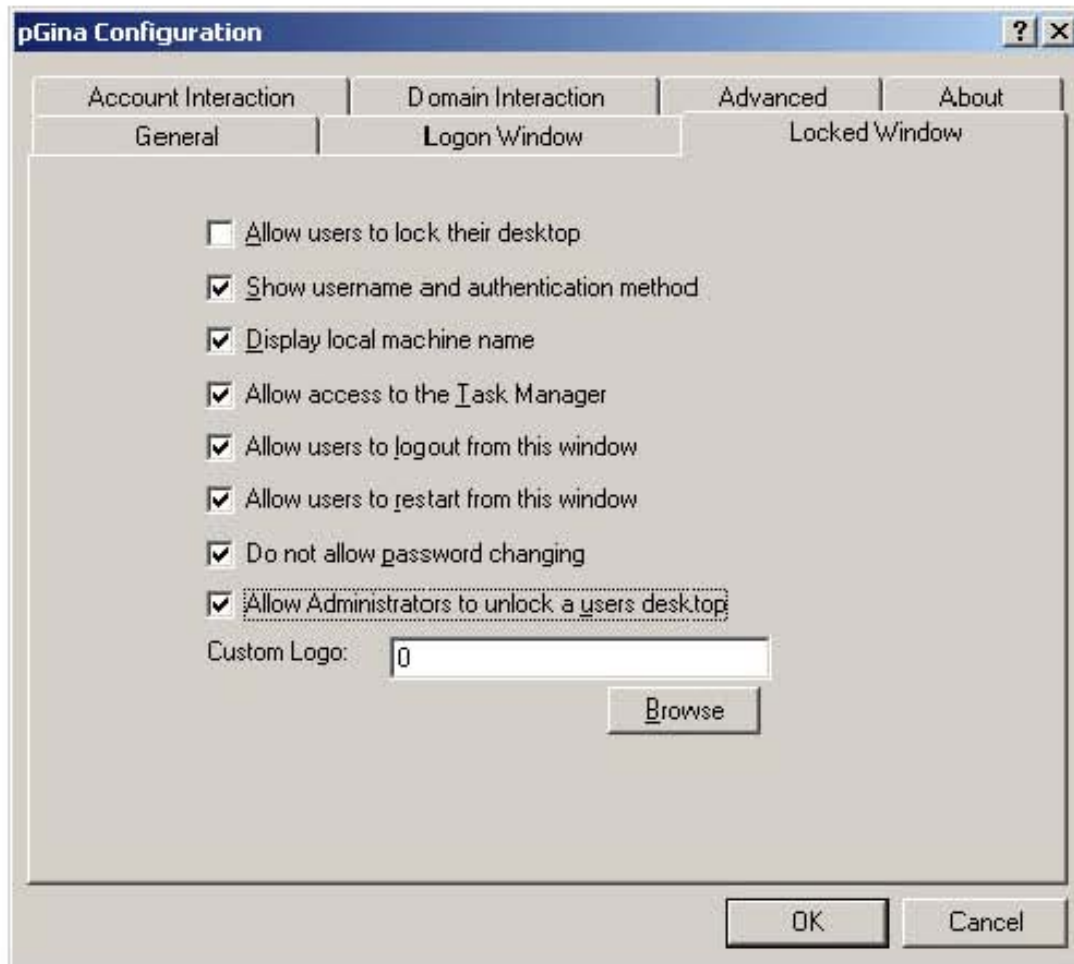
The screenshot shows the 'LDAPAuth Configuration' dialog box with the following fields and values:

- Server Options:**
 - LDAP Server: ldap1.its.hawaii.edu
 - Use SSL:
 - Port: 636
 - PrePend: (empty)
 - Filter: (uid=%s)
 - Append: (empty)
 - Group Attr: (empty)
 - Admin User: Special DN from Russ
 - Admin Pass: password from Russ
 - LDAP Method: Search Mode (selected), MultiMap Mode, Map Mode
- Contexts:**
 - Text area: ou=People, dc=hawaii, dc=edu
 - Buttons: Add Context, Del, Up, Down
- About LDAPAuth:**
 - LDAPAuth Version 1.2 by Micah Cooper
- Admin Groups:**
 - Text area: (empty)
 - Buttons: Add, Del
- User Groups:**
 - Text area: (empty)
 - Buttons: Add, Del

At the bottom of the dialog are buttons for OK, Cancel, and Help.

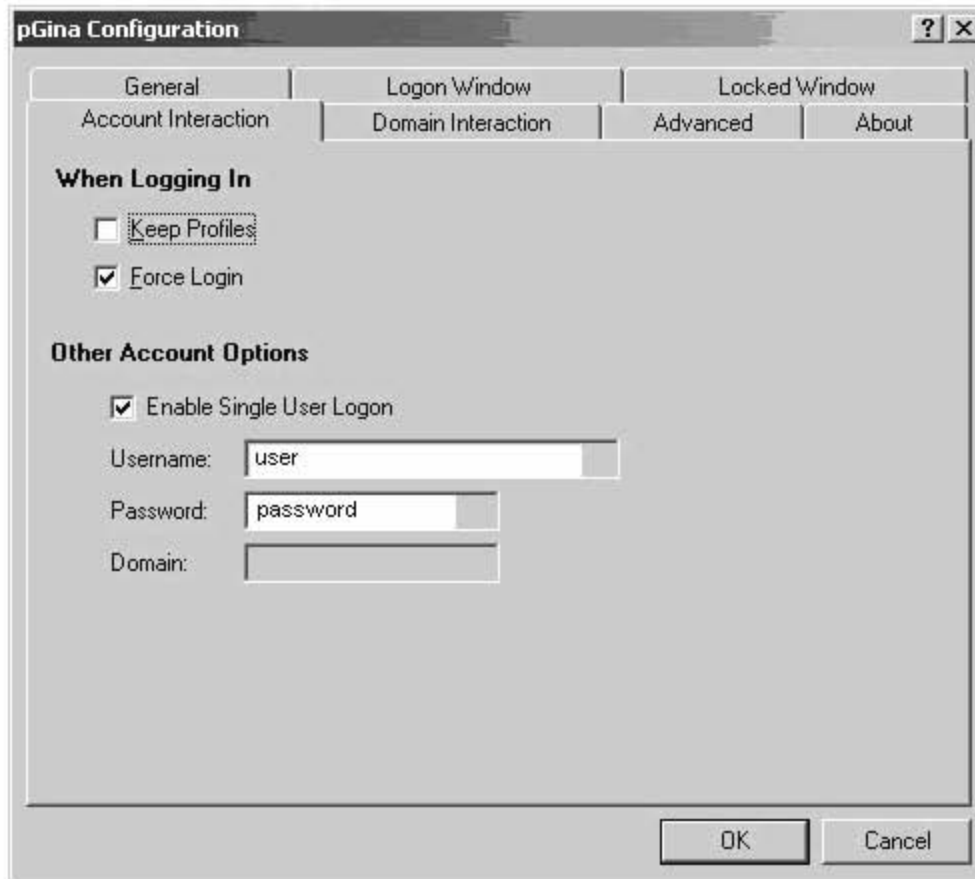
In the **Locked Window** tab:

- a. uncheck the option to **Allow users to lock their desktop**
- b. check the option to **Do not allow password changing**
- c. check the option to **Allow Administrators to unlock a users desktop**



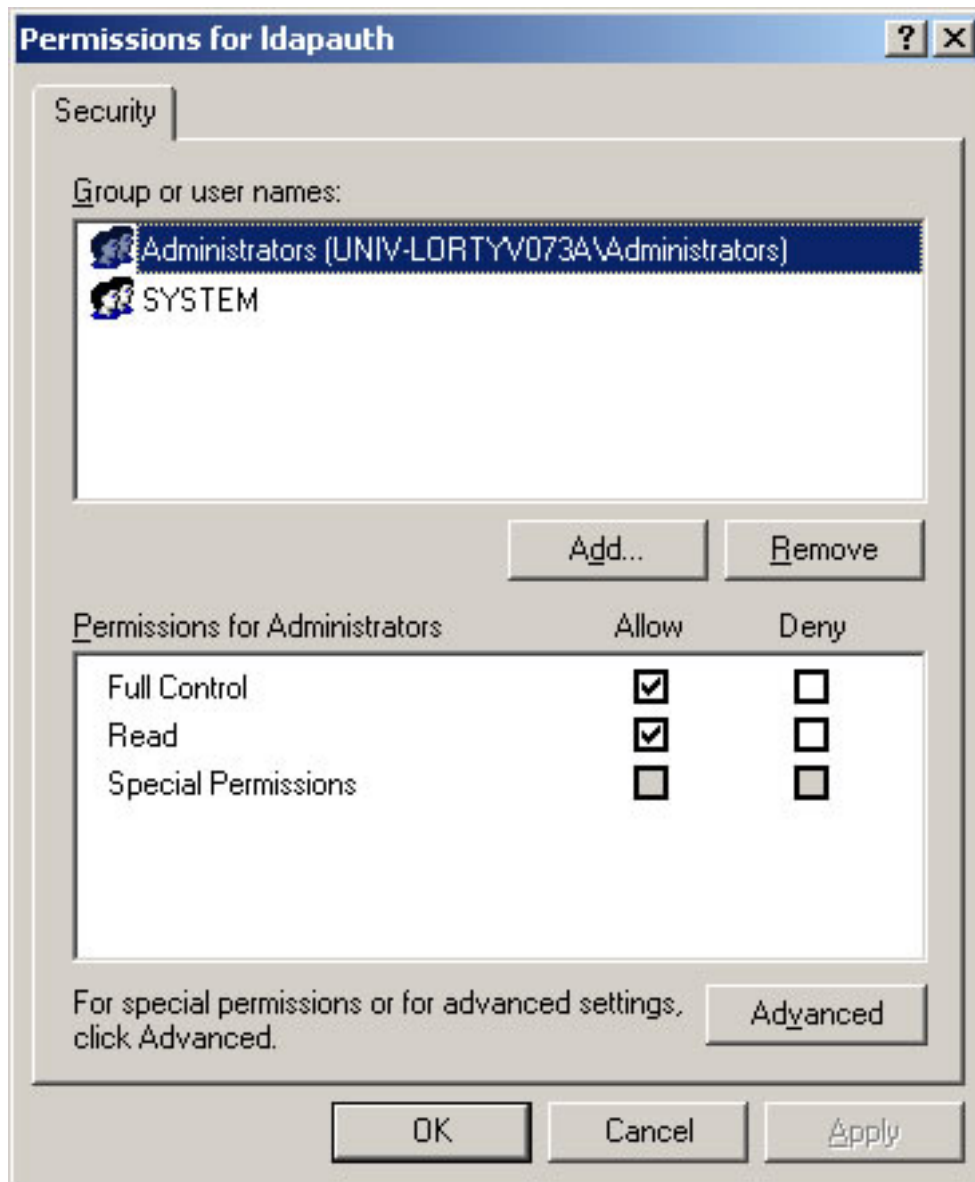
In the Account Interaction tab:

- a. uncheck the option to **Keep Profiles**
- b. check the option to **Force Login**
- c. check the **Enable Single User Logon** (enter username, password. This step allows you to specify a local account to login to the machine with. pGina will authenticate against the UH LDAP server. If authentication is successful, it will then log into the computer with the account you specify in this step in lieu of creating a new user.)

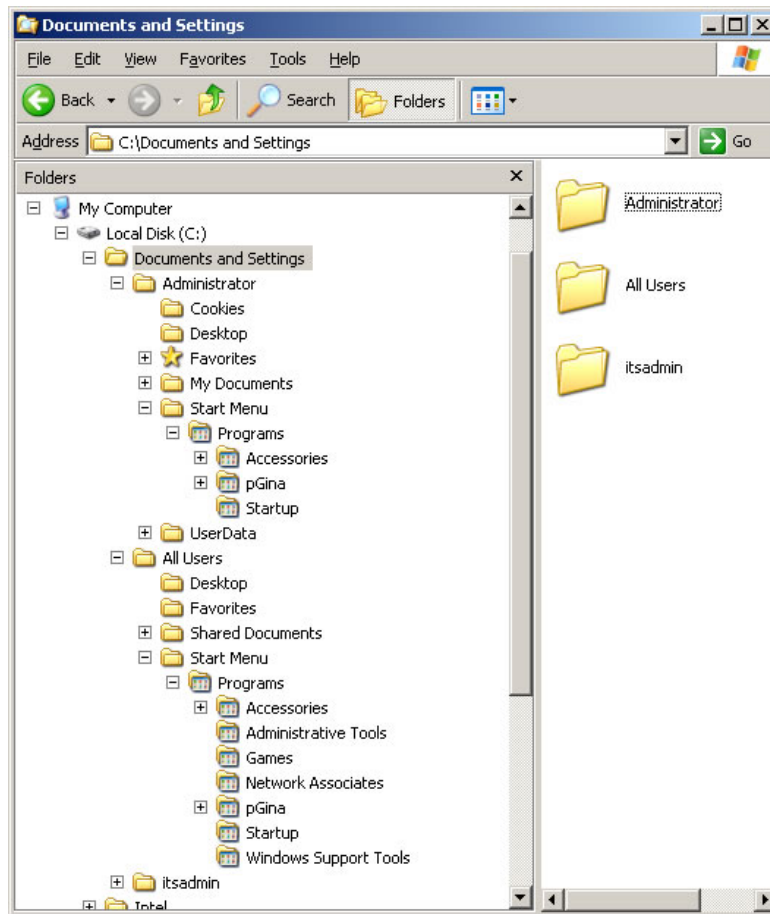


Set ACL on pGina registry key to prevent general users from seeing the Admin account name and password.

- a. Open up the registry editor and look for HKEY_LOCAL_MACHINE\SOFTWARE\pGINA\ldapauth
- b. Right click the **ldapauth** key and choose **Permissions**
- c. Remove all the Groups and usernames except for **Administrators** and **SYSTEM**
- d. Give **Administrators** and **SYSTEM Full Control** access.



Move the pGina folder from C:\Documents and Settings\ All Users\Start Menu\Programs folder to the C:\Documents and Settings\Administrator\Start Menu\Programs folder. This is done so only the administrator account can see the pGina configuration program.



For additional assistance, please phone the ITS Help Desk at (808) 956-8883,
send e-mail to help@hawaii.edu, or fax (808) 956-2108.
Neighbor islands call toll-free (800) 558-2669.

Or visit the ITS Help Desk home page at <http://www.hawaii.edu/help>

The ITS Help Desk functions are located in Keller 105, Keller 213,
and the ITS Hamilton Lab on the UH Mānoa Campus.

The University of Hawai'i is an equal opportunity/affirmative action institution.