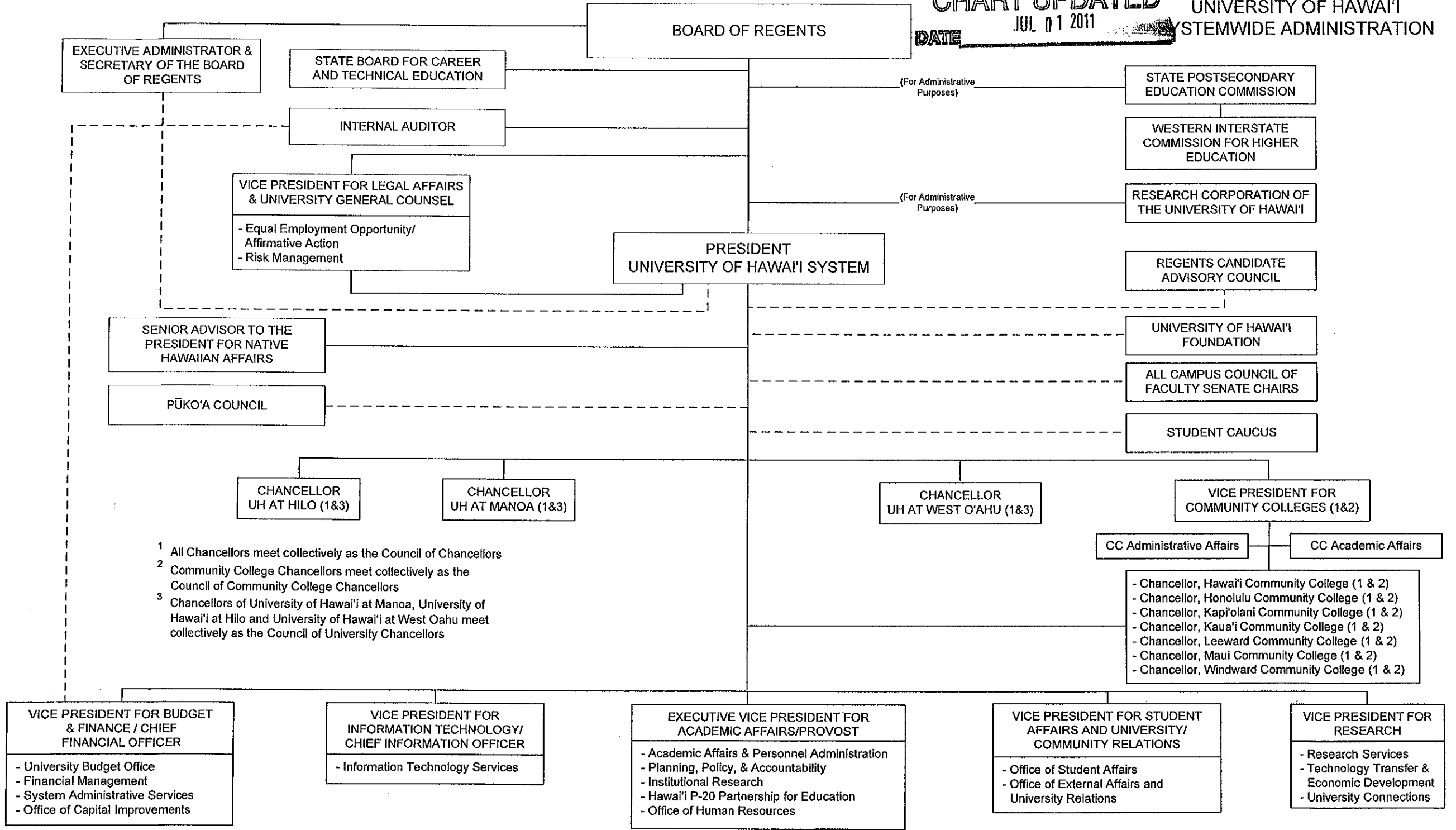


CHART UPDATED
DATE JUL 01 2011

STATE OF HAWAII
 UNIVERSITY OF HAWAII
 SYSTEMWIDE ADMINISTRATION



- 1 All Chancellors meet collectively as the Council of Chancellors
- 2 Community College Chancellors meet collectively as the Council of Community College Chancellors
- 3 Chancellors of University of Hawai'i at Manoa, University of Hawai'i at Hilo and University of Hawai'i at West Oahu meet collectively as the Council of University Chancellors

OFFICE OF THE PRESIDENT
UNIVERSITY OF HAWAII SYSTEM
President, University of Hawai'i System 89058¹

STATE OF HAWAII
UNIVERSITY OF HAWAII
SYSTEMWIDE ADMINISTRATION
EXECUTIVE VICE PRESIDENT FOR
ACADEMIC AFFAIRS/PROVOST
POSITION ORGANIZATION CHART

OFFICE OF THE EXECUTIVE VICE PRESIDENT
FOR ACADEMIC AFFAIRS/PROVOST
Executive Vice President for Academic Affairs/Provost 89051
Private Secretary II SR-22 900029
Director, Data Gov & Operations PBD 80015
Institutional Support PBB 80049

ACADEMIC AFFAIRS/
PLANNING AND POLICY OFFICE
Assoc VP, Academic Affairs 89262
Admin & Fiscal Support Spec PBA 78182
Academic Support PBB 78586

INTERNATIONAL AND STRATEGIC
INITIATIVES OFFICE
Sr Exec for Intl & Strategic Initiatives 89059
Institutional Support PBB 78889

INSTITUTIONAL RESEARCH
AND ANALYSIS OFFICE
Director, Inst Res & Anal 89160
Institutional Support PBA 79520
Institutional Analyst PBB 80220
Institutional Analyst PBB 78628
Institutional Analyst PBB 81148²
Institutional Analyst PBB 81180²
Institutional Analyst PBB 78868
Institutional Analyst PBC 80216
Computer Specialist PBB 78627
Computer Specialist PBB 80213
Computer Specialist PBB 80223

HAWAII P-20 PARTNERSHIPS
FOR EDUCATION OFFICE
Assoc VP & Executive Dir 89467
SLDS Manager PBC 78511
Institutional Support PBB 77256
Administrative Officer PBB 78490

HUMAN
RESOURCES
CHART I

Maefeenwood 5/10/12
Approved Date

¹ Excluded from position count
² Part of UOH 902 appropriation reflected organizationally on this chart
Positions appropriated but not established (MOF B): 99969F, 99970F

	Perm
General Funds (UOH903)	22.00
General Funds (UOH 902)	2.00
Special Funds (B) (UOH 903)	2.00