



UNIVERSITY
of HAWAI'I®
SYSTEM

High School Graduates, Going Rates and the Enrollment Pattern Between UH Four-Year and UH Two-Year Campuses

Office of the Vice President for Academic Planning & Policy

University of Hawai'i

July 2009

High School Graduates, Going Rates and the Enrollment Pattern Between UH Four-Year and UH Two-Year Campuses

The May 2009 edition of Postsecondary Education Opportunity identified a national trend toward record high numbers of high school graduates, record high college participation rates (going rates)¹ and an accelerating shift in enrollment from four-year to two-year colleges (see Postsecondary Education Opportunity, #203). Data for Hawai'i high school graduates, first-time student enrollment at UH campuses² and UH going rates were examined in light of this article. Summary results follow.

Observations

- High school graduates for the State are at a high level historically (note that the data compiled for this brief go back to Fall 1982).
- The number of first-time students enrolled at the University of Hawai'i campuses in Fall 2008 was at the highest level since Fall 1982.
- The total going rate into the University of Hawai'i campuses in Fall 2008 was 37.8%, the highest level since Fall 1995.
- The enrollment of first-time freshmen from Hawai'i high schools at UH Mānoa has been in a long-term decline. Going rates at UH Mānoa have declined from 14.4% in 1983 to 8.7% in Fall 2008.
- Enrollment of first-time freshmen at UH Hilo has increased sharply the last three fall semesters. However, the total going rate is low in absolute terms, at less than 3% of the State's graduates.
- Enrollment of first-time students at the UH Community College campuses exceeded 3,800 students in Fall 2008, the highest number since at least Fall 1982. The going rate reached 26% in Fall 2008, also a 27 year high.
- The enrollment pattern for first-time students in Hawai'i seems to be following the national pattern, with rapidly increasing numbers of students enrolling at the UH Community Colleges.
- The percentage of Hawai'i first-time freshmen enrolled full-time at the UH four-year campuses in Fall 2008 measured 94.6%. This compares to 68.7% of Hawai'i first-time students at the UH Community Colleges.

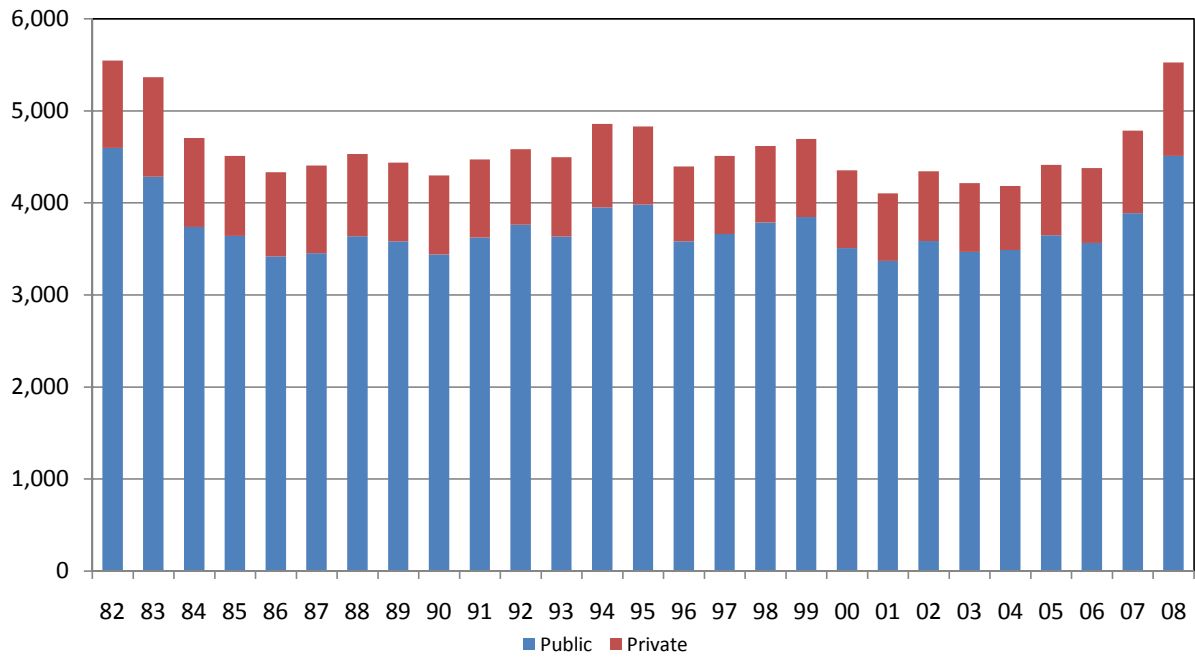
Implications

- Four-year campuses may have to step up their efforts to attract and retain new Hawai'i high school graduates if system-wide baccalaureate attainment goals are to be achieved.
- UH Community Colleges may continue to experience rapid enrollment growth, taxing resources.
- The relatively low proportion of first-time students enrolled full-time at the UH Community Colleges, combined with the shifting enrollment pattern between four-year and two-year campuses, may increase time-to-degree for those students seeking to complete a baccalaureate.
- If these trends continue, transfer policies and practices that move students effectively from the UH Community Colleges to the UH four-year campuses will be more critical in the years ahead.

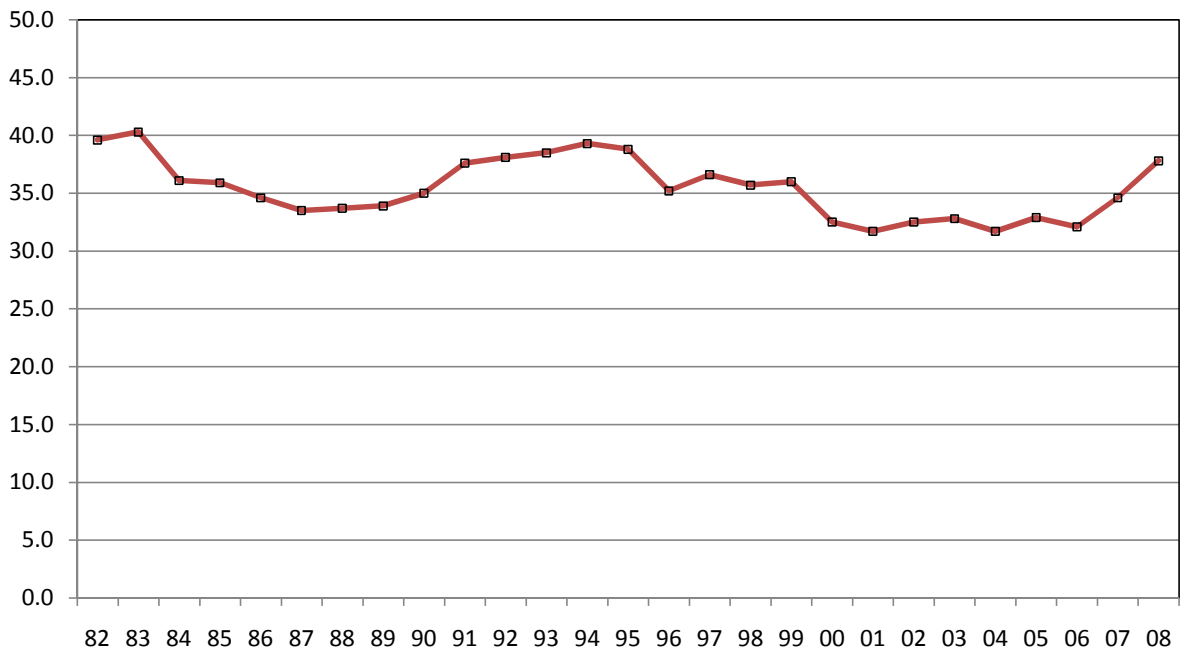
¹ The "Going Rate" is the percentage of Hawai'i high school graduates entering the UH campuses without delay upon graduation from high school. Includes completers at Hawai'i public and private high schools; excludes GED recipients, home-schooled students, etc.

² UH-West O'ahu, a historically upper division campus, began enrolling first-time freshmen in Fall 2007. Due to the lack of historical data, the campus is excluded from this analysis.

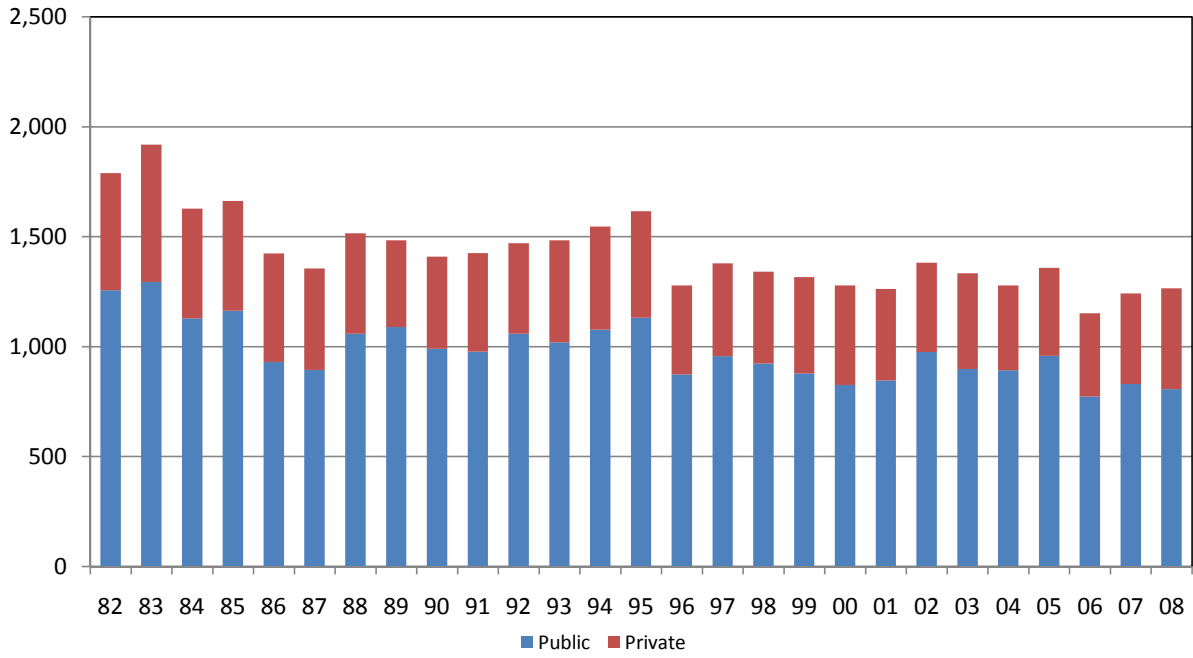
**First-Time Students from Hawai'i High Schools
UH System - Historical**



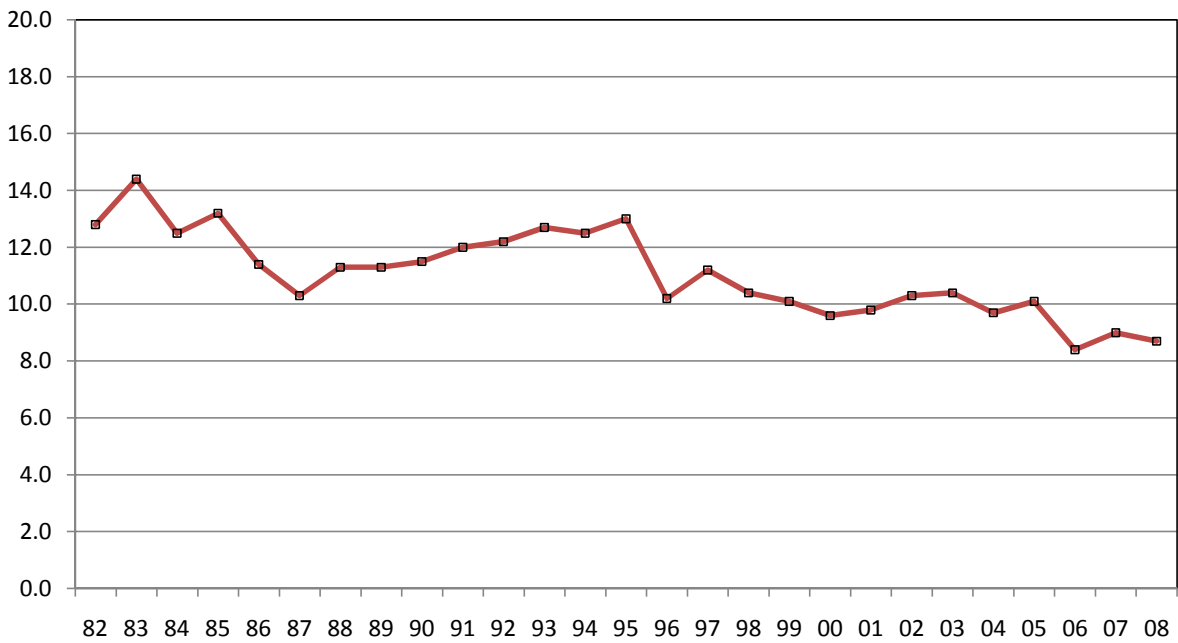
**Going Rate of First-Time Students from Hawai'i High Schools
UH System - Historical**



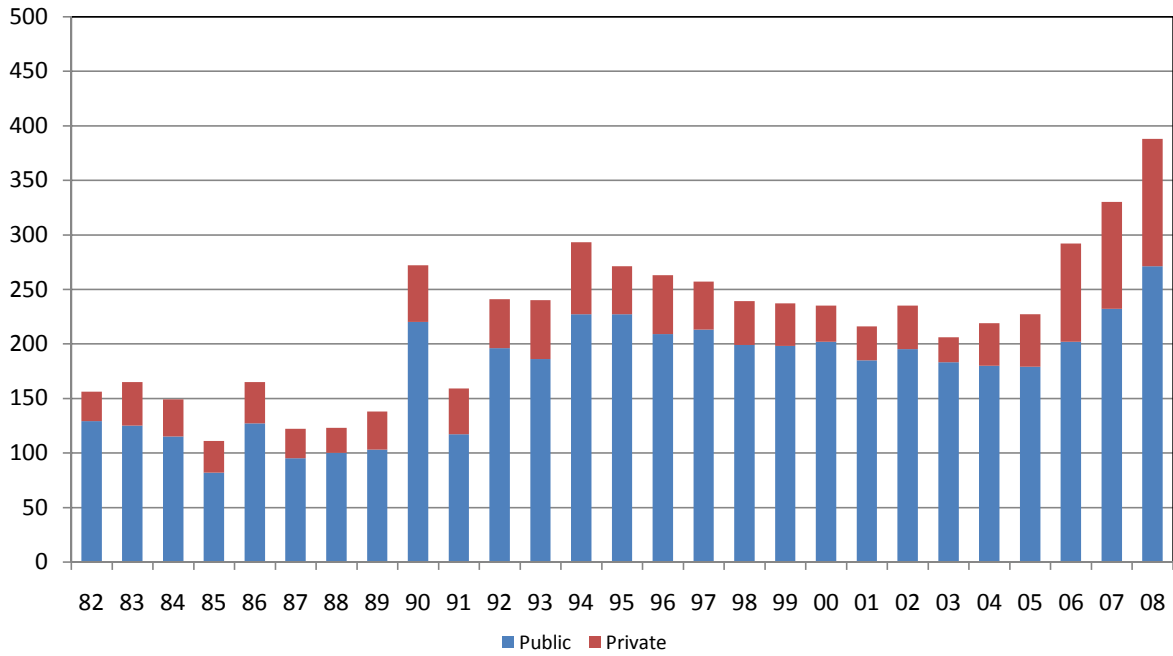
**First-Time Freshmen from Hawai'i High Schools
UH Mānoa - Historical**



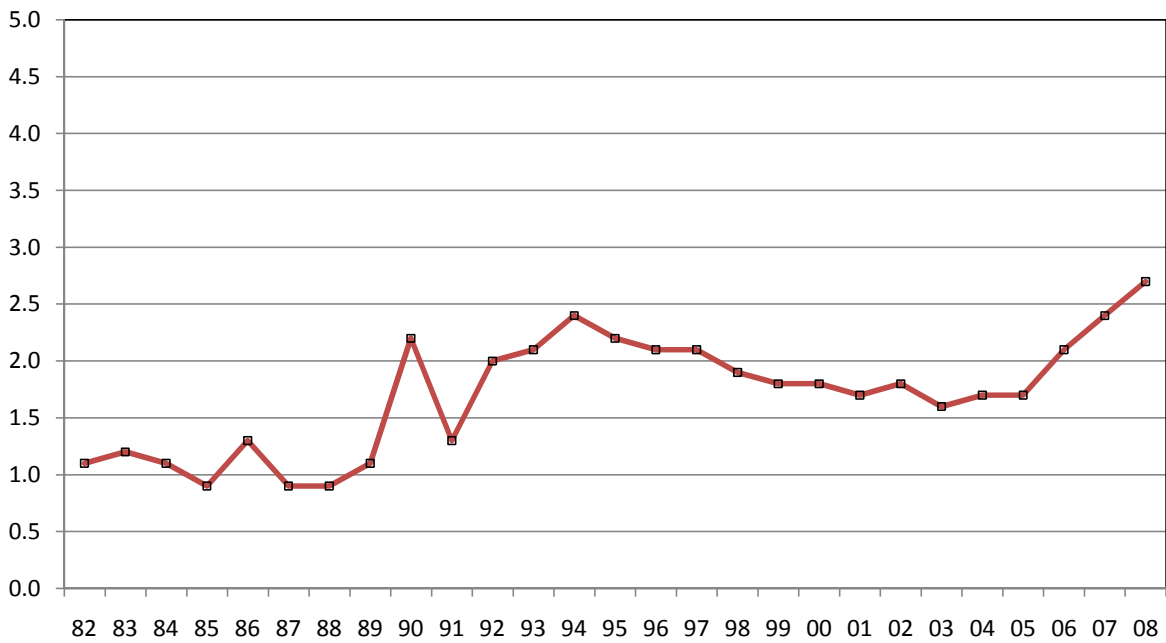
**Going Rate of First-Time Freshmen from Hawai'i High Schools
UH Mānoa - Historical**



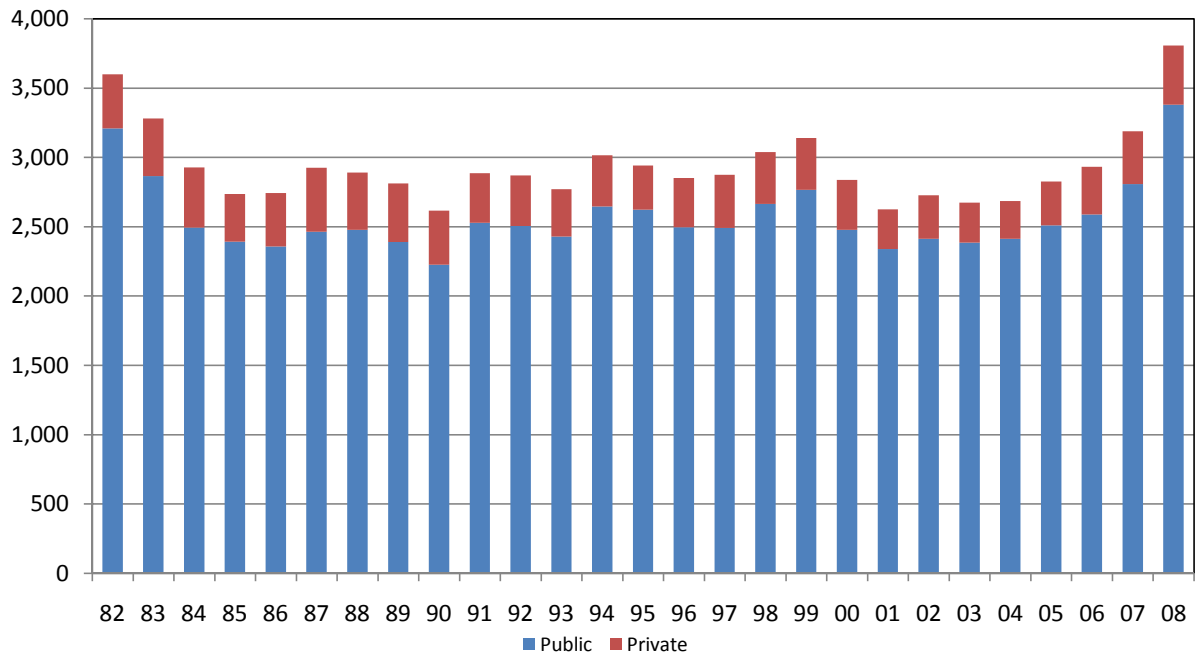
**First-Time Freshmen from Hawai'i High Schools
UH Hilo - Historical**



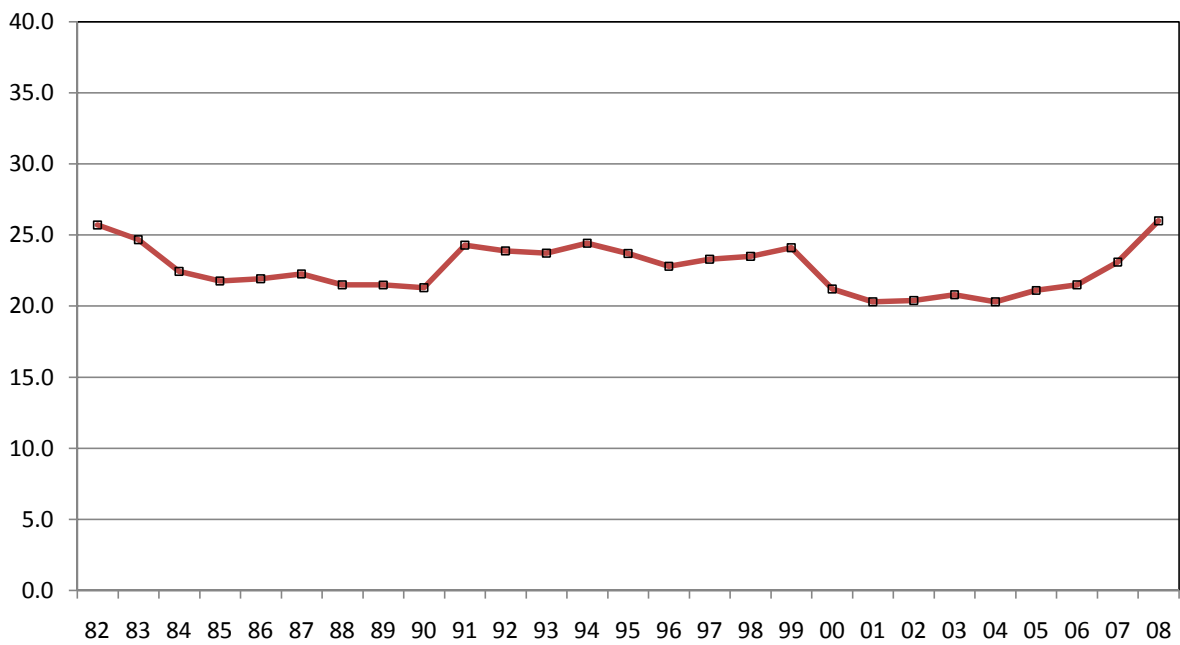
**Going Rate of First-Time Freshmen from Hawai'i High Schools
UH Hilo - Historical**

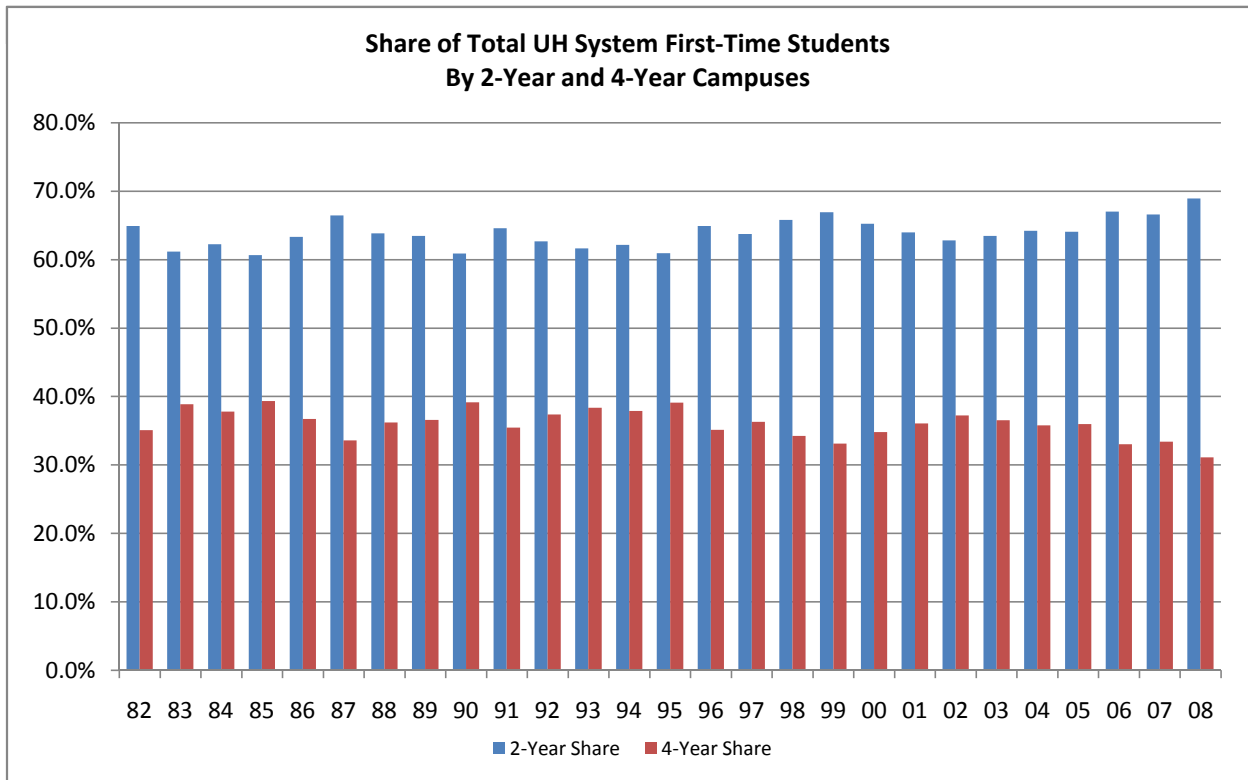
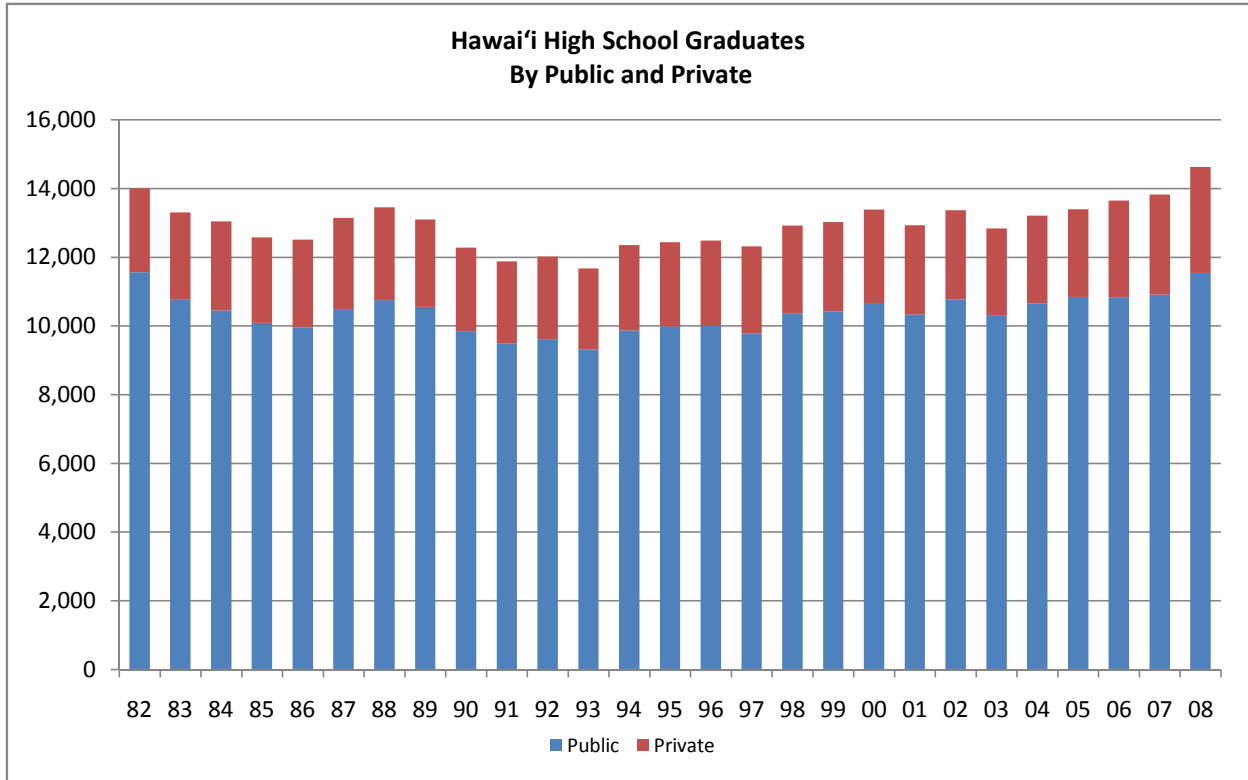


**First-Time Students from Hawai'i High Schools
UH Community Colleges - Historical**



**Going Rate of First-Time Students from Hawai'i High Schools
UH Community Colleges - Historical**





"GOING RATES" OF HAWAI'I HIGH SCHOOL GRADUATES
 INTO THE UNIVERSITY OF HAWAI'I SYSTEM
 BY UH CAMPUS AND BY PUBLIC AND PRIVATE HIGH SCHOOLS
 FALL 1982 TO FALL 2008

CAMPUS AND FALL SEMESTER	TOTAL		PUBLIC SCHOOLS		PRIVATE SCHOOLS	
	No.	Going Rate	No.	Going Rate	No.	Going Rate
TOTAL UH						
1982	5,543	39.6	4,594	39.7	949	39.0
1983	5,364	40.3	4,284	39.8	1,080	42.5
1984	4,703	36.1	3,737	35.7	966	37.3
1985	4,510	35.9	3,638	36.0	872	35.1
1986	4,331	34.6	3,416	34.3	915	35.8
1987	4,404	33.5	3,453	32.9	951	35.8
1988	4,529	33.7	3,637	33.8	892	33.1
1989	4,435	33.9	3,581	33.9	854	33.6
1990	4,296	35.0	3,438	34.9	858	35.3
1991	4,469	37.6	3,623	38.2	846	35.3
1992	4,580	38.1	3,761	39.1	819	34.1
1993	4,494	38.5	3,634	39.0	860	36.5
1994	4,855	39.3	3,949	40.0	906	36.5
1995	4,829	38.8	3,982	39.9	847	34.6
1996	4,393	35.2	3,579	35.8	814	32.7
1997	4,510	36.6	3,661	37.4	849	33.6
1998	4,617	35.7	3,787	36.5	830	32.6
1999	4,692	36.0	3,844	36.9	848	32.7
2000	4,351	32.5	3,506	32.9	845	31.2
2001	4,102	31.7	3,369	32.6	733	28.2
2002	4,343	32.5	3,583	33.3	760	29.3
2003	4,213	32.8	3,467	33.6	746	29.5
2004	4,183	31.7	3,487	32.7	696	27.2
2005	4,411	32.9	3,646	33.6	765	30.0
2006	4,375	32.1	3,564	32.9	811	28.9
2007	4,785	34.6	3,888	35.6	897	30.8
2008	5,525	37.8	4,509	39.1	1,016	33.0
UH at MĀNOA ¹						
1982	1,789	12.8	1,256	10.9	533	21.9
1983	1,918	14.4	1,295	12.0	623	24.5
1984	1,627	12.5	1,129	10.8	498	19.3
1985	1,663	13.2	1,163	11.5	500	20.1
1986	1,424	11.4	931	9.3	493	19.3
1987	1,356	10.3	895	8.5	461	17.4
1988	1,516	11.3	1,059	9.9	457	16.9
1989	1,484	11.3	1,089	10.3	395	15.5
1990	1,409	11.5	991	10.1	418	17.2
1991	1,425	12.0	978	10.3	447	18.7
1992	1,470	12.2	1,059	11.0	411	17.1
1993	1,484	12.7	1,019	10.9	465	19.7
1994	1,546	12.5	1,077	10.9	469	18.9
1995	1,616	13.0	1,132	11.3	484	19.8
1996	1,279	10.2	874	8.7	405	16.3
1997	1,379	11.2	957	9.8	422	16.7
1998	1,341	10.4	924	8.9	417	16.4
1999	1,316	10.1	879	8.4	437	16.9
2000	1,278	9.6	826	7.7	452	16.7
2001	1,262	9.8	846	8.2	416	16.0
2002	1,381	10.3	976	9.1	405	15.6
2003	1,333	10.4	899	8.7	434	17.2
2004	1,278	9.7	893	8.4	385	15.1
2005	1,358	10.1	958	8.8	400	15.7
2006	1,152	8.4	773	7.1	379	13.5
2007	1,242	9.0	830	7.6	412	14.1
2008	1,265	8.7	807	7.0	458	14.9

"GOING RATES" OF HAWAI'I HIGH SCHOOL GRADUATES
 INTO THE UNIVERSITY OF HAWAI'I SYSTEM
 BY UH CAMPUS AND BY PUBLIC AND PRIVATE HIGH SCHOOLS
 FALL 1982 TO FALL 2008

CAMPUS AND FALL SEMESTER	TOTAL		PUBLIC SCHOOLS		PRIVATE SCHOOLS	
	No.	Going Rate	No.	Going Rate	No.	Going Rate
UH at HILO ¹						
1982	156	1.1	129	1.1	27	1.1
1983	165	1.2	125	1.2	40	1.6
1984	149	1.1	115	1.1	34	1.3
1985	111	0.9	82	0.8	29	1.2
1986	165	1.3	127	1.3	38	1.5
1987	122	0.9	95	0.9	27	1.0
1988	123	0.9	100	0.9	23	0.9
1989	138	1.1	103	1.0	35	1.4
1990	272	2.2	220	2.2	52	2.1
1991	159	1.3	117	1.2	42	1.8
1992	241	2.0	196	2.0	45	1.9
1993	240	2.1	186	2.0	54	2.3
1994	293	2.4	227	2.3	66	2.7
1995	271	2.2	227	2.3	44	1.8
1996	263	2.1	209	2.1	54	2.2
1997	257	2.1	213	2.2	44	1.7
1998	239	1.9	199	1.9	40	1.6
1999	237	1.8	198	1.9	39	1.5
2000	235	1.8	202	1.9	33	1.2
2001	216	1.7	185	1.8	31	1.2
2002	235	1.8	195	1.8	40	1.5
2003	206	1.6	183	1.8	23	0.9
2004	219	1.7	180	1.7	39	1.5
2005	227	1.7	179	1.7	48	1.9
2006	292	2.1	202	1.9	90	3.2
2007	330	2.4	232	2.1	98	3.4
2008	388	2.7	271	2.3	117	3.8
UH-WEST O'AHU ¹						
2007	26	0.2	18	0.2	8	0.3
2008	65	0.4	52	0.5	13	0.4
COMMUNITY COLLEGES ²						
1982	3,598	25.7	3,209	27.8	389	16.0
1983	3,281	24.7	2,864	26.6	417	16.4
1984	2,927	22.4	2,493	23.8	434	16.8
1985	2,736	21.8	2,393	23.7	343	13.8
1986	2,742	21.9	2,358	23.7	384	15.0
1987	2,926	22.3	2,463	23.5	463	17.4
1988	2,890	21.5	2,478	23.0	412	15.3
1989	2,813	21.5	2,389	22.6	424	16.7
1990	2,615	21.3	2,227	22.6	388	16.0
1991	2,885	24.3	2,528	26.7	357	14.9
1992	2,869	23.9	2,506	26.1	363	15.1
1993	2,770	23.7	2,429	26.1	341	14.5
1994	3,016	24.4	2,645	26.8	371	14.9
1995	2,942	23.7	2,623	26.3	319	13.0
1996	2,851	22.8	2,496	25.0	355	14.3
1997	2,874	23.3	2,491	25.5	383	15.2
1998	3,037	23.5	2,664	25.7	373	14.7
1999	3,139	24.1	2,767	26.5	372	14.4
2000	2,838	21.2	2,478	23.2	360	13.3
2001	2,624	20.3	2,338	22.6	286	11.0
2002	2,727	20.4	2,412	22.4	315	12.1
2003	2,674	20.8	2,385	23.1	289	11.4
2004	2,686	20.3	2,414	22.7	272	10.6

"GOING RATES" OF HAWAI'I HIGH SCHOOL GRADUATES
 INTO THE UNIVERSITY OF HAWAI'I SYSTEM
 BY UH CAMPUS AND BY PUBLIC AND PRIVATE HIGH SCHOOLS
 FALL 1982 TO FALL 2008

CAMPUS AND FALL SEMESTER	TOTAL		PUBLIC SCHOOLS		PRIVATE SCHOOLS	
	No.	Going Rate	No.	Going Rate	No.	Going Rate
2005	2,826	21.1	2,509	23.1	317	12.5
2006	2,931	21.5	2,589	23.9	342	12.2
2007	3,187	23.1	2,808	25.7	379	13.0
2008	3,807	26.0	3,379	29.3	428	13.9
Hawai'i CC						
1982	388	2.8	353	3.1	35	1.4
1983	355	2.7	333	3.1	22	0.9
1984	273	2.1	243	2.3	30	1.2
1985	338	2.7	316	3.1	22	0.9
1986	281	2.2	261	2.6	20	0.8
1987	328	2.5	296	2.8	32	1.2
1988	328	2.4	297	2.8	31	1.1
1989	338	2.6	291	2.8	47	1.8
1990	201	1.6	190	1.9	11	0.5
1991	328	2.8	312	3.3	16	0.7
1992	295	2.5	282	2.8	13	0.5
1993	329	2.8	306	3.3	23	1.0
1994	369	3.0	352	3.6	17	0.7
1995	383	3.1	364	3.6	19	0.8
1996	262	2.1	253	2.5	9	0.4
1997	276	2.2	259	2.6	17	0.7
1998	303	2.3	285	2.7	18	0.7
1999	269	2.1	253	2.4	16	0.6
2000	261	2.0	247	2.3	14	0.5
2001	204	1.6	194	1.9	10	0.4
2002	237	1.8	229	2.1	8	0.3
2003	263	2.0	254	2.5	9	0.4
2004	286	2.2	275	2.6	11	0.4
2005	293	2.2	279	2.6	14	0.5
2006	325	2.4	307	2.8	18	0.6
2007	349	2.5	313	2.9	36	1.2
2008	431	2.9	388	3.4	43	1.4
Honolulu CC						
1982	708	5.1	639	5.5	69	2.8
1983	588	4.4	521	4.8	67	2.6
1984	563	4.3	499	4.8	64	2.5
1985	508	4.0	452	4.5	56	2.3
1986	465	3.7	398	4.0	67	2.6
1987	494	3.8	416	4.0	78	2.9
1988	492	3.7	428	4.0	64	2.4
1989	459	3.5	413	3.9	46	1.8
1990	460	3.7	413	4.2	47	1.9
1991	430	3.6	391	4.1	39	1.6
1992	460	3.8	426	4.4	34	1.4
1993	414	3.5	383	4.1	31	1.3
1994	471	3.8	440	4.5	31	1.2
1995	401	3.2	367	3.7	34	1.4
1996	416	3.3	375	3.8	41	1.6
1997	408	3.3	360	3.7	48	1.9
1998	466	3.6	428	4.1	38	1.5
1999	459	3.5	415	4.0	44	1.7
2000	418	3.1	377	3.5	41	1.5
2001	338	2.6	305	3.0	33	1.3
2002	386	2.9	350	3.2	36	1.4
2003	357	2.8	337	3.3	20	0.8
2004	439	3.3	396	3.7	43	1.7

"GOING RATES" OF HAWAI'I HIGH SCHOOL GRADUATES
 INTO THE UNIVERSITY OF HAWAI'I SYSTEM
 BY UH CAMPUS AND BY PUBLIC AND PRIVATE HIGH SCHOOLS
 FALL 1982 TO FALL 2008

CAMPUS AND FALL SEMESTER	TOTAL		PUBLIC SCHOOLS		PRIVATE SCHOOLS	
	No.	Going Rate	No.	Going Rate	No.	Going Rate
2005	437	3.3	408	3.8	29	1.1
2006	431	3.2	384	3.5	47	1.7
2007	455	3.3	413	3.8	42	1.4
2008	541	3.7	488	4.2	53	1.7
Kapi'olani CC						
1982	932	6.7	799	6.9	133	5.5
1983	930	7.0	772	7.2	158	6.2
1984	791	6.1	640	6.1	151	5.8
1985	685	5.4	568	5.6	117	4.7
1986	711	5.7	580	5.8	131	5.1
1987	798	6.1	603	5.7	195	7.3
1988	821	6.1	651	6.1	170	6.3
1989	813	6.2	623	5.9	190	7.5
1990	793	6.5	599	6.1	194	8.0
1991	793	6.7	657	6.9	136	5.7
1992	823	6.8	652	6.8	171	7.1
1993	739	6.3	588	6.3	151	6.4
1994	795	6.4	631	6.4	164	6.6
1995	781	6.3	642	6.4	139	5.7
1996	752	6.0	605	6.1	147	5.9
1997	794	6.4	611	6.2	183	7.2
1998	828	6.4	661	6.4	167	6.6
1999	914	7.0	738	7.1	176	6.8
2000	725	5.4	581	5.4	144	5.3
2001	686	5.3	571	5.5	115	4.4
2002	640	4.8	518	4.8	122	4.7
2003	643	5.0	503	4.9	140	5.5
2004	574	4.3	464	4.4	110	4.3
2005	629	4.7	517	4.8	112	4.4
2006	696	5.1	572	5.3	124	4.4
2007	793	5.7	631	5.8	162	5.6
2008	817	5.6	679	5.9	138	4.5
Kaua'i CC						
1982	188	1.3	181	1.6	7	0.3
1983	165	1.2	156	1.5	9	0.4
1984	133	1.0	127	1.2	6	0.2
1985	149	1.2	146	1.4	3	0.1
1986	150	1.2	142	1.4	8	0.3
1987	141	1.1	137	1.3	4	0.2
1988	165	1.2	162	1.5	3	0.1
1989	156	1.2	152	1.4	4	0.2
1990	147	1.2	144	1.5	3	0.1
1991	173	1.5	172	1.8	1	<0.1
1992	164	1.4	163	1.7	1	<0.1
1993	152	1.3	142	1.5	10	0.4
1994	213	1.7	209	2.1	4	0.2
1995	190	1.5	189	1.9	1	<0.1
1996	181	1.5	178	1.8	3	0.1
1997	173	1.4	169	1.7	4	0.2
1998	144	1.1	135	1.3	9	0.4
1999	160	1.2	158	1.5	2	<0.1
2000	148	1.1	145	1.4	3	0.1
2001	145	1.1	137	1.3	8	0.3
2002	169	1.3	166	1.5	3	0.1
2003	127	1.0	123	1.2	4	0.2
2004	131	1.0	124	1.2	7	0.3

"GOING RATES" OF HAWAI'I HIGH SCHOOL GRADUATES
 INTO THE UNIVERSITY OF HAWAI'I SYSTEM
 BY UH CAMPUS AND BY PUBLIC AND PRIVATE HIGH SCHOOLS
 FALL 1982 TO FALL 2008

CAMPUS AND FALL SEMESTER	TOTAL		PUBLIC SCHOOLS		PRIVATE SCHOOLS	
	No.	Going Rate	No.	Going Rate	No.	Going Rate
2005	174	1.3	166	1.5	8	0.3
2006	182	1.3	179	1.7	3	0.1
2007	146	1.1	141	1.3	5	0.2
2008	186	1.3	180	1.6	6	0.2
Leeward CC						
1982	886	6.3	809	7.0	77	3.2
1983	839	6.3	753	7.0	86	3.4
1984	785	6.0	687	6.6	98	3.8
1985	717	5.7	626	6.2	91	3.7
1986	733	5.9	646	6.5	87	3.4
1987	789	6.0	692	6.6	97	3.7
1988	776	5.8	682	6.3	94	3.5
1989	763	5.8	667	6.3	96	3.8
1990	665	5.4	580	5.9	85	3.5
1991	822	6.9	709	7.5	113	4.7
1992	704	5.9	620	6.4	84	3.5
1993	768	6.6	678	7.3	90	3.8
1994	751	6.1	653	6.6	98	3.9
1995	728	5.9	649	6.5	79	3.2
1996	777	6.2	685	6.9	92	3.7
1997	742	6.0	662	6.8	80	3.2
1998	776	6.0	687	6.6	89	3.5
1999	776	6.0	698	6.7	78	3.0
2000	679	5.1	604	5.7	75	2.8
2001	767	5.9	698	6.8	69	2.7
2002	785	5.9	710	6.6	75	2.9
2003	811	6.3	746	7.2	65	2.6
2004	803	6.1	743	7.0	60	2.3
2005	812	6.1	737	6.8	75	2.9
2006	800	5.9	737	6.8	63	2.2
2007	904	6.5	844	7.7	60	2.1
2008	1,118	7.6	1,024	8.9	94	3.0
Maui CC						
1982	278	2.0	250	2.2	28	1.1
1983	239	1.8	193	1.8	46	1.8
1984	237	1.8	191	1.8	46	1.8
1985	181	1.4	157	1.6	24	1.0
1986	219	1.8	184	1.9	35	1.4
1987	197	1.5	173	1.6	24	0.9
1988	137	1.0	122	1.1	15	0.6
1989	177	1.4	151	1.4	26	1.0
1990	211	1.7	188	1.9	23	0.9
1991	217	1.8	195	2.1	22	0.9
1992	266	2.2	244	2.5	22	0.9
1993	235	2.0	221	2.4	14	0.6
1994	266	2.2	249	2.5	17	0.7
1995	294	2.4	276	2.8	18	0.7
1996	307	2.5	278	2.8	29	1.2
1997	334	2.7	309	3.2	25	1.0
1998	346	2.7	325	3.1	21	0.8
1999	350	2.7	329	3.2	21	0.8
2000	435	3.3	382	3.6	53	2.0
2001	276	2.1	262	2.5	14	0.5
2002	301	2.3	267	2.5	34	1.3
2003	262	2.0	244	2.4	18	0.7
2004	244	1.8	229	2.1	15	0.6

**"GOING RATES" OF HAWAI'I HIGH SCHOOL GRADUATES
 INTO THE UNIVERSITY OF HAWAI'I SYSTEM
 BY UH CAMPUS AND BY PUBLIC AND PRIVATE HIGH SCHOOLS
 FALL 1982 TO FALL 2008**

CAMPUS AND FALL SEMESTER	TOTAL		PUBLIC SCHOOLS		PRIVATE SCHOOLS	
	No.	Going Rate	No.	Going Rate	No.	Going Rate
2005	241	1.8	222	2.0	19	0.7
2006	279	2.0	236	2.2	43	1.5
2007	302	2.2	268	2.5	34	1.2
2008	445	3.0	405	3.5	40	1.3
Windward CC						
1982	218	1.6	178	1.5	40	1.6
1983	165	1.2	136	1.3	29	1.1
1984	145	1.1	106	1.0	39	1.5
1985	158	1.3	128	1.3	30	1.2
1986	183	1.5	147	1.5	36	1.4
1987	179	1.4	146	1.4	33	1.2
1988	171	1.3	136	1.3	35	1.3
1989	107	0.8	92	0.9	15	0.6
1990	138	1.1	113	1.1	25	1.0
1991	122	1.0	92	1.0	30	1.3
1992	157	1.3	119	1.2	38	1.6
1993	133	1.1	111	1.2	22	0.9
1994	151	1.2	111	1.1	40	1.6
1995	165	1.3	136	1.4	29	1.2
1996	156	1.2	122	1.2	34	1.4
1997	147	1.2	121	1.2	26	1.0
1998	174	1.3	143	1.4	31	1.2
1999	211	1.6	176	1.7	35	1.4
2000	172	1.3	142	1.3	30	1.1
2001	208	1.6	171	1.7	37	1.4
2002	209	1.6	172	1.6	37	1.4
2003	211	1.6	178	1.7	33	1.3
2004	209	1.6	183	1.7	26	1.0
2005	240	1.8	180	1.7	60	2.4
2006	218	1.6	174	1.6	44	1.6
2007	238	1.7	198	1.8	40	1.4
2008	269	1.8	215	1.9	54	1.8
HAWAI'I STATE HS GRADUATES	No.	H%	No.	H%	No.	H%
1982	13,999	100.0	11,563	82.6	2,436	17.4
1983	13,301	100.0	10,757	80.9	2,544	19.1
1984	13,041	100.0	10,454	80.2	2,587	19.8
1985	12,575	100.0	10,092	80.3	2,483	19.7
1986	12,511	100.0	9,958	79.6	2,553	20.4
1987	13,146	100.0	10,491	79.8	2,655	20.2
1988	13,449	100.0	10,751	79.9	2,698	20.1
1989	13,094	100.0	10,551	80.6	2,543	19.4
1990	12,278	100.0	9,848	80.2	2,430	19.8
1991	11,877	100.0	9,482	79.8	2,395	20.2
1992	12,015	100.0	9,615	80.0	2,400	20.0
1993	11,675	100.0	9,320	79.8	2,355	20.2
1994	12,353	100.0	9,870	79.9	2,483	20.1
1995	12,434	100.0	9,984	80.3	2,450	19.7
1996	12,482	100.0	9,995	80.1	2,487	19.9
1997	12,312	100.0	9,784	79.5	2,528	20.5
1998	12,915	100.0	10,369	80.3	2,546	19.7
1999	13,017	100.0	10,425	80.1	2,592	19.9
2000	13,380	100.0	10,671	79.8	2,709	20.2
2001	12,933	100.0	10,330	79.9	2,603	20.1
2002	13,368	100.0	10,771	80.6	2,597	19.4

**"GOING RATES" OF HAWAI'I HIGH SCHOOL GRADUATES
 INTO THE UNIVERSITY OF HAWAI'I SYSTEM
 BY UH CAMPUS AND BY PUBLIC AND PRIVATE HIGH SCHOOLS
 FALL 1982 TO FALL 2008**

CAMPUS AND FALL SEMESTER	TOTAL		PUBLIC SCHOOLS		PRIVATE SCHOOLS	
	No.	Going Rate	No.	Going Rate	No.	Going Rate
2003	12,840	100.0	10,312	80.4	2,528	19.6
2004	13,212	100.0	10,657	80.7	2,555	19.3
2005	13,393	100.0	10,847	81.0	2,546	19.0
2006	13,645	100.0	10,834	79.4	2,811	20.6
2007	13,821	100.0	10,909	78.9	2,912	21.1
2008	14,622	100.0	11,539	78.9	3,083	21.1

Note: The "going rate" is the percentage of high school graduates from the State of Hawai'i entering the University of Hawai'i campuses in the fall semester immediately following graduation from high school. Excludes home-schooled students, those who received high school diplomas via the GED examination, etc.

¹ First-time freshmen only. UH-West Oahu first freshmen class in Fall 2007.

² Includes all regular first-time students; excludes specials (early admits and concurrents).

Data Sources:

First-Time students: UH Institutional Research Office records.

High School Graduates: State of Hawai'i Department of Education and administrative offices of private schools.

OVPAPP; July 2009.