

*Office of the Vice President for Community Colleges*

---

## **SELF STUDY**

## **DEMOGRAPHIC INFORMATION AND ACHIEVEMENT DATA (DIAD)**

(Revised February 18, 2010)

## **FIGURES AND TABLES**

## **UHCC SYSTEM**

## **FALL 2008 Data**



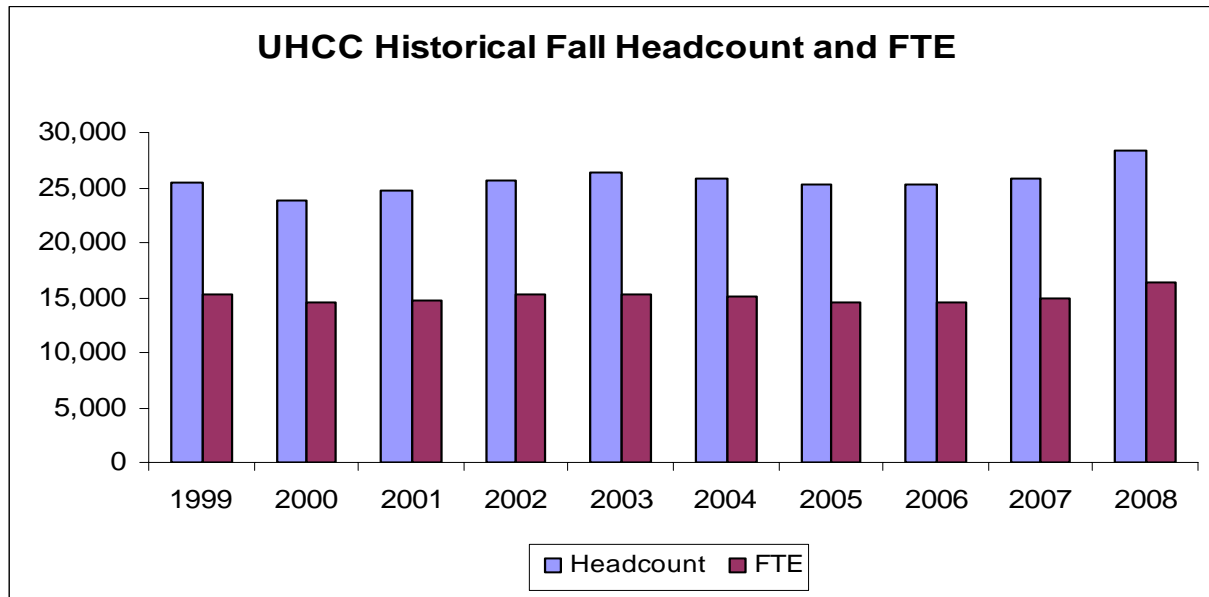
# TABLE OF CONTENTS

Figure 1 - Historical Fall Headcount and Full-Time Equivalent (FTE) Enrollment.....	1
Figure 2 - Enrollment Projections .....	2
Figure 3 - Going Rate High School Graduates (percentage).....	3
Figure 4 - Number High School Graduates Immediate Transition to UH Community Colleges .....	4
Figure 4.a - Number of High School Graduates Immediate Transition to UH System by Unit.....	4
Table 1 - Enrollment by Residency for Tuition Status, Fall 2003 to Fall 2008 .....	5
Table 2 - International Student Enrollment Fall 2008 .....	6
Figure 5 - University Hawaii Community College System Organizational Chart.....	7
Figure 6 - State of Hawaii, Students, and Faculty Diversity .....	8
Figure 7 - Hawaiian/Part Hawaiian Students Enrolled University of Hawai'i System .....	9
Figure 8 - Where Hawaiian/Part Hawaiian Students Enroll (Fall Semester).....	10
Table 3 - Staff by Ethnicity and Gender Fall 2008.....	11
Table 4 - Full Time Faculty by Rank, Ethnicity, and Gender Fall 2008 .....	12
Table 5 - Student Enrollment - Ethnicity and Gender Fall 2008 .....	13
Figure 9 - Retention .....	14
Figure 10 - Persistence.....	15
Figure 11 - Annual Number Degrees and Certificates Awarded .....	16
Figure 12 - Continuing Enrollment, Transfer, and Graduation of first-time, full-time, degree-seeking students within 150% of first time enrollment .....	17
Table 6 - Transfer Numbers and Rates .....	18
Figure 13 - Developmental Education Completion.....	19
Figure 14 - Employment Status .....	21
Figure 15 - Graduates and Leavers Job Preparation .....	22
Figure 16 - CSSE Benchmark Percentiles .....	23

## STUDENT ENROLLMENT

Full Time Equivalent (FTE) is defined as the total student semester hours, summed across all course enrollments in regular credit courses, divided by 15.

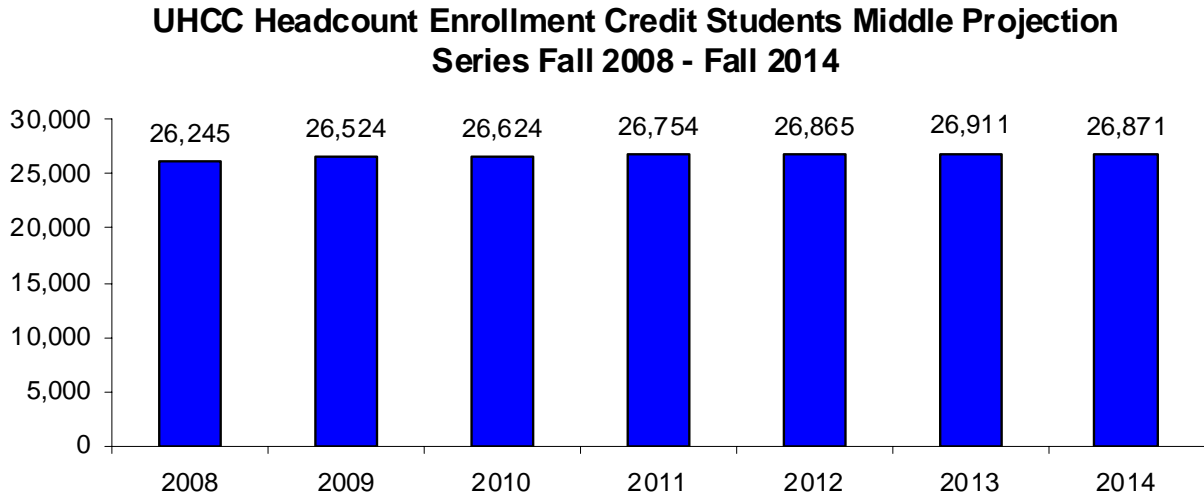
**Figure 1 - Historical Fall Headcount and Full-Time Equivalent (FTE) Enrollment**



Source: MAPS – Fall Enrollment Report, University of Hawaii, Community Colleges Fall 2008, Table 1, Table 2

# ENROLLMENT PROJECTIONS

**Figure 2 - Enrollment Projections**

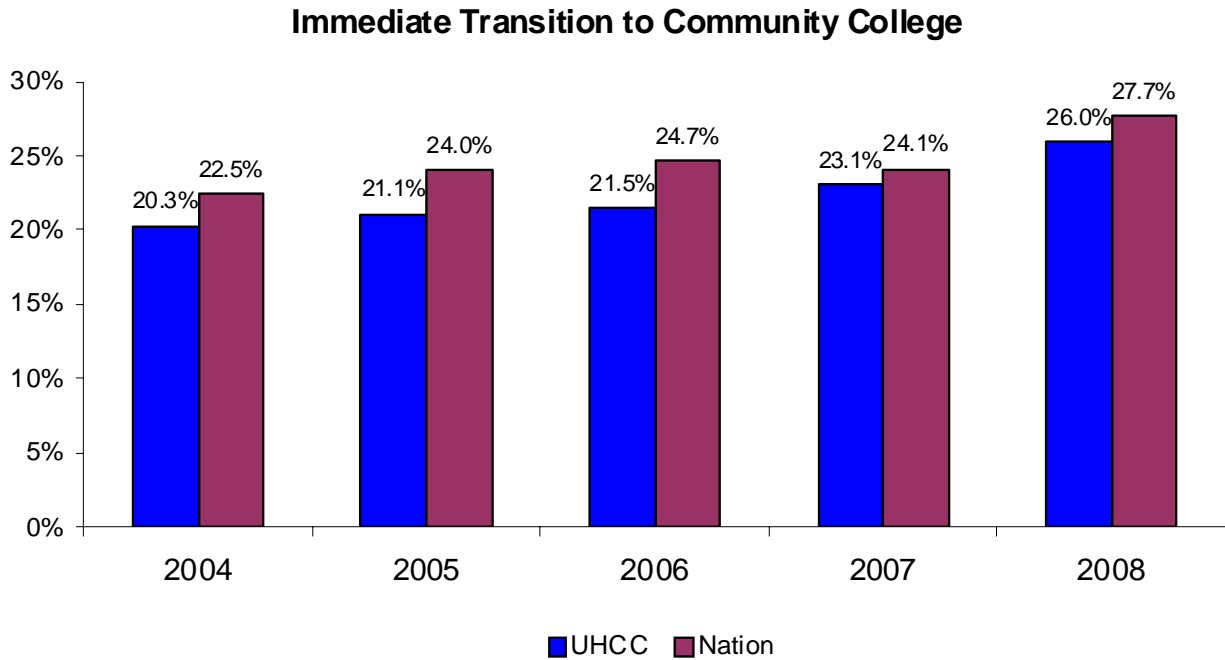


Source: MAPS – Enrollment Projections University of Hawaii Community Colleges Fall 2008 To Fall 2014, Table 1, Middle Projection Series

## GOING RATE

Going Rate – Percentage Hawaii public and private June high school graduates who enroll in a community college the following fall semester

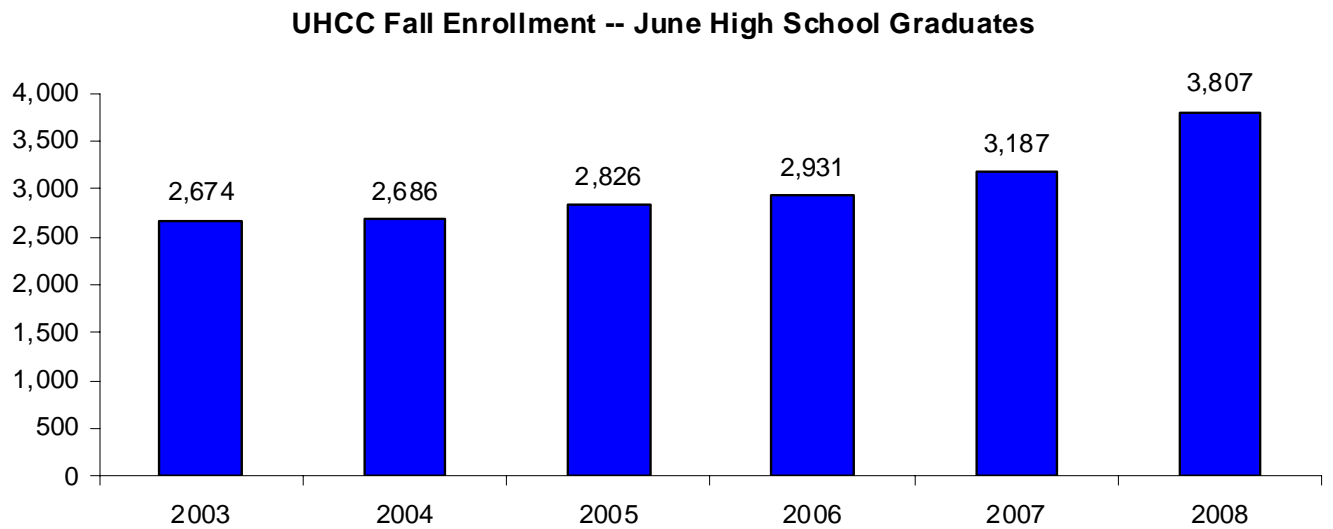
**Figure 3 - Going Rate High School Graduates (percentage)**



Sources:

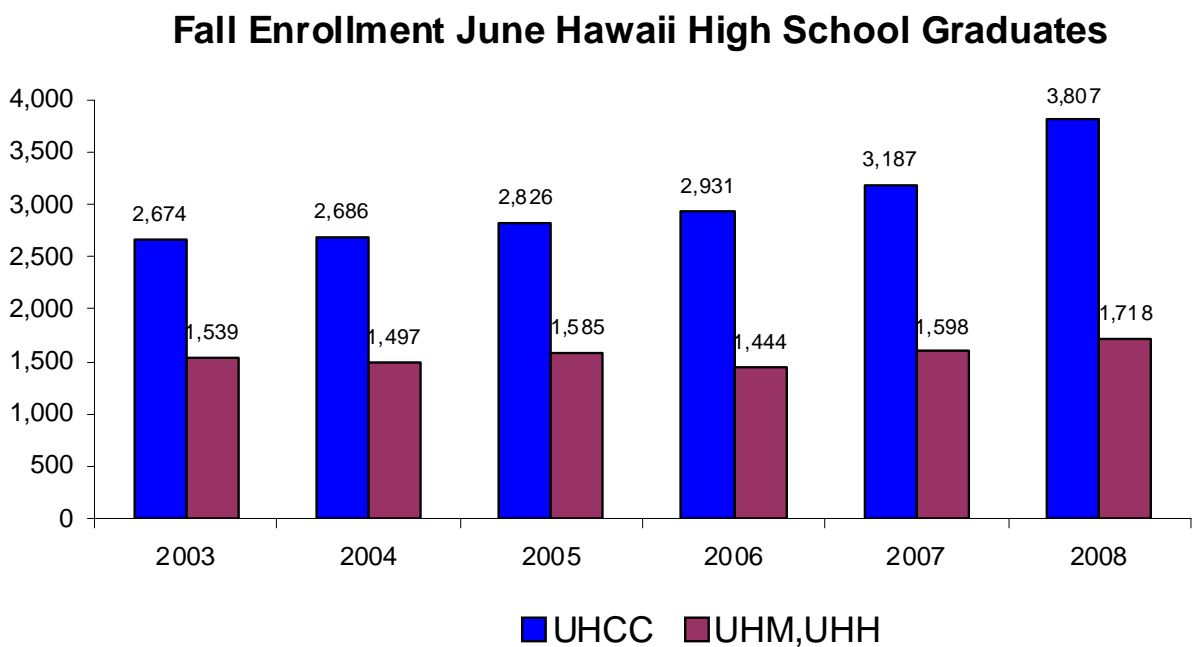
- 1) Hawaii: MAPS – High School Background of First-Time Students, Table 4  
Includes public and private graduates
- 2) Nation: National Center for Education Statistics 2008. Digest Education Statistics: Table 388  
College Enrollment and Labor Force Status of High School Completers tables.

**Figure 4 - Number High School Graduates Immediate Transition to UH Community Colleges**



Source: MAPS – High School Background of First-Time Students, Table 4

**Figure 4.a - Number of High School Graduates Immediate Transition to UH System by Unit**



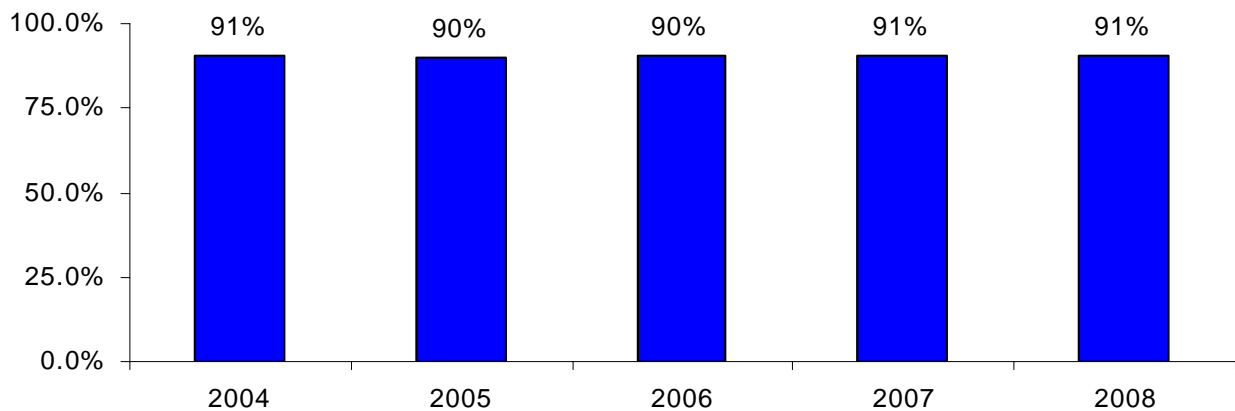
Source: MAPS – High School Background of First-Time Students, Table 4

## ENROLLMENT BY RESIDENCY FOR TUITION STATUS

**Table 1 - Enrollment by Residency for Tuition Status, Fall 2004 to Fall 2008**

	Fall 2004		Fall 2005		Fall 2006		Fall 2007		Fall 2008	
	No.	%	No.	%	No.	%	No.	%	No.	%
Resident	23,243	89.70	22,466	89.00	22,542	89.20	23,202	89.60	25,524	89.73
Resident Converted	257	1.00	269	1.10	282	1.10	246	1.00	264	0.93
<b>Residents Subtotal</b>	<b>23,500</b>	<b>90.70</b>	<b>22,735</b>	<b>90.10</b>	<b>22,824</b>	<b>90.40</b>	<b>23,448</b>	<b>90.60</b>	<b>25,788</b>	<b>90.66</b>
Not Exempted	1,110	4.30	1,271	5.00	1,297	5.10	1,338	5.20	1,494	5.25
West Undergraduate Exchange			19	0.10	37	0.10	44	0.20	45	0.16
Military Exemption	826	3.20	776	3.10	693	2.70	669	2.60	707	2.49
Faculty/Staff Exemption	16	0.10	20	0.10	16	0.10	20	0.10	23	0.08
Institutional Exemption	230	0.90	226	0.90	220	0.90	119	0.50	61	0.21
Student Exchange	2	0.00	1	0.00	0	0.00	1	0.00	4	0.01
Pacific-Asian Exemption	10	0.00	11	0.00	16	0.10	14	0.10	9	0.03
East-West Center	0	0.00	0	0.00	2	0.00	1	0.00	1	0.00
Hawaiian Exemption	167	0.60	171	0.70	155	0.60	161	0.60	184	0.65
Rev Institutional/Exempt							60	2.50	111	0.39
Hawai'i National Guard & Reserve							12	0.50	17	0.06
<b>Non-Resident Subtotal</b>	<b>2,361</b>	<b>9.10</b>	<b>2,495</b>	<b>9.90</b>	<b>2,436</b>	<b>9.60</b>	<b>2,439</b>	<b>9.40</b>	<b>2,656</b>	<b>9.34</b>
<b>No Data</b>	<b>37</b>	<b>0.10</b>	<b>3</b>	<b>0.00</b>	<b>0</b>	<b>0.00</b>	<b>0</b>	<b>0.00</b>	<b>0</b>	<b>0.00</b>
<b>GRAND TOTAL</b>	<b>25,898</b>	<b>100%</b>	<b>25,233</b>	<b>100%</b>	<b>25,260</b>	<b>100%</b>	<b>25,887</b>	<b>100%</b>	<b>28,444</b>	<b>100.00%</b>

### Percent Community College Students Paying Resident Tuition



Source: MAPS – Fall Enrollment Report University of Hawaii Community Colleges, Appendix B Selected Characteristics of Credit Students



## INTERNATIONAL STUDENT ENROLLMENT

The University's long-standing interest in International Education has attracted a wealth of academic expertise, resources, and linkages. The University of Hawaii Community Colleges are engaged in a variety of international programs and projects, reflecting their commitment to developing institutional expertise in international education, with a particular focus on the Asia and Pacific region.

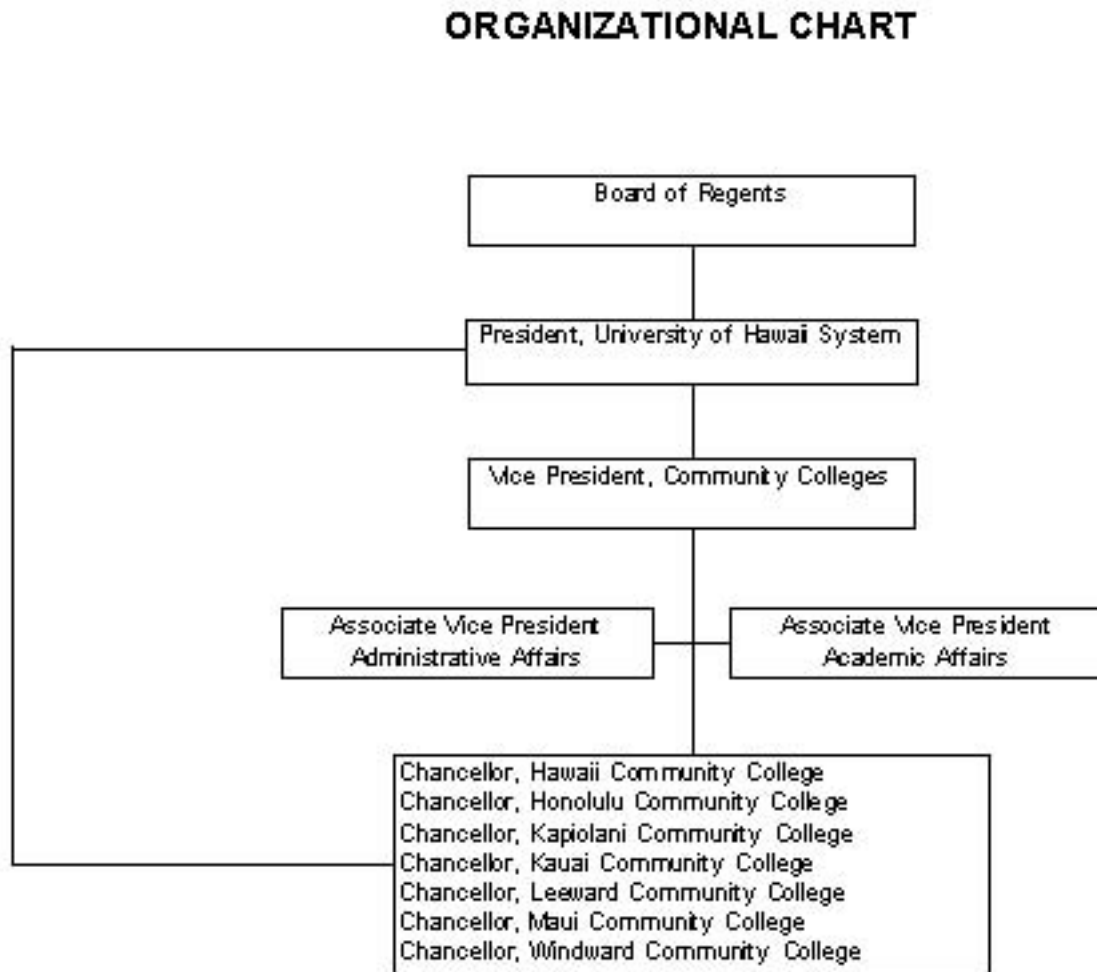
**Table 2 - International Student Enrollment Fall 2008**

Region of Origin	HAW	HON	KAP	KAU	LEE	MAU	WIN	UHCC
Africa			2					2
Americas	3	3	12		6	12	1	37
Asia	54	18	476	2	23	21	1	595
Europe	2		13		1			16
Middle East	2				2	1		5
Australia						1		1
Oceania		2	12		1			15
No Data								0
Total	61	23	515	2	33	35	2	671

Source: ODS – IRO\_BASE\_UH (End of Semester)

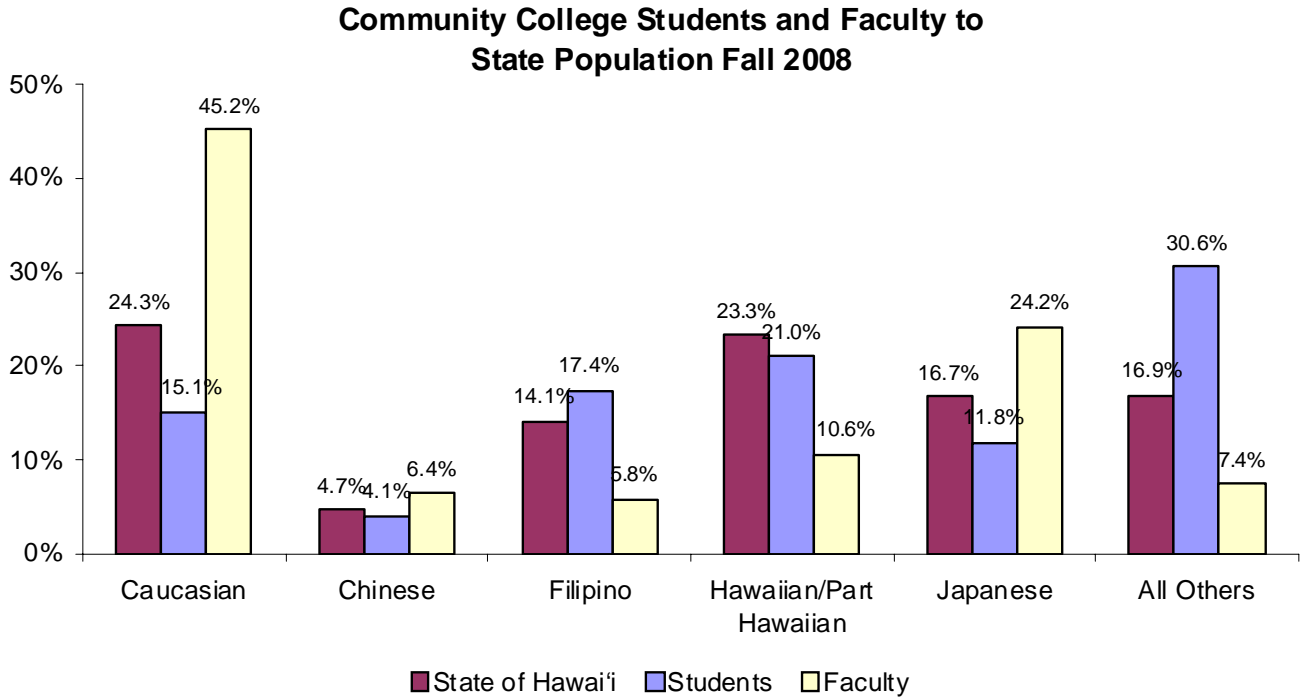
# ORGANIZATIONAL CHART

**Figure 5 - University Hawaii Community College System Organizational Chart**



## DIVERSITY

**Figure 6 - State of Hawaii, Students, and Faculty Diversity**

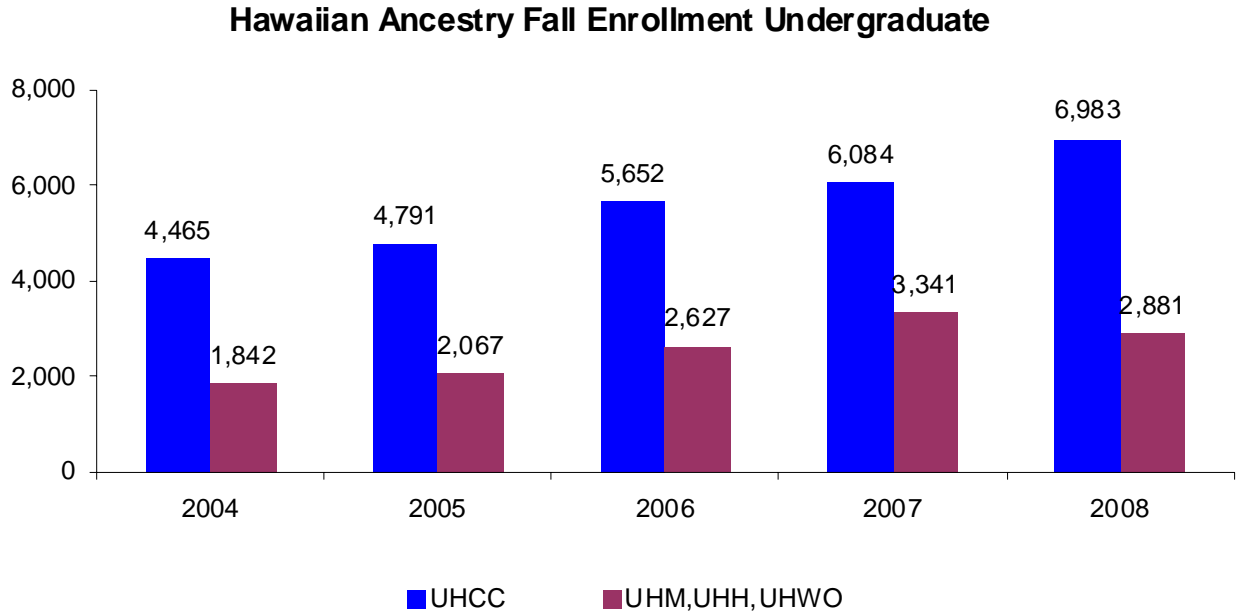


**Sources:**

- 1) State of Hawaii: Population - Profile of General Demographic Characteristics: 2000, Data Set: Census 2000 Summary File 1 (SF1) 100 Percent Data; Geographic Area: Hawaii (Native Hawaiian Race Alone or in combination with one or more races)
- 2) Students: ODS – IRO\_BASE\_UH (Census) University of Hawaii Community Colleges
- 3) Full Time Faculty: Community Colleges Human Resource Office

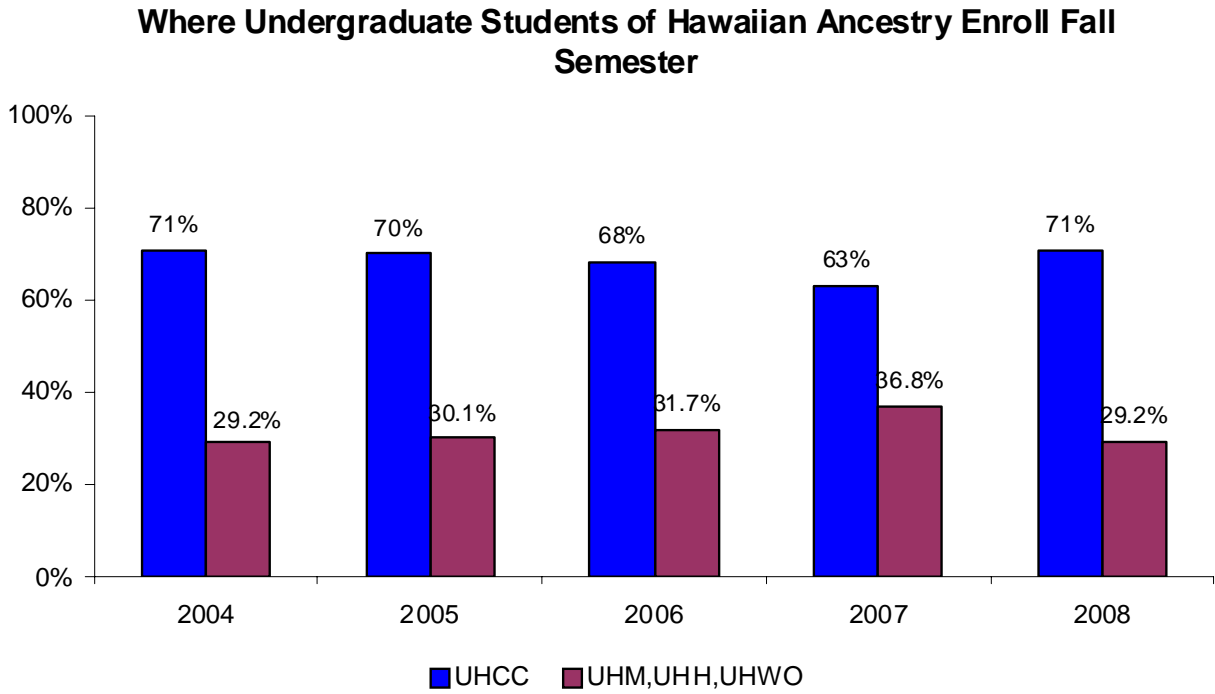
# HAWAIIAN AND PART HAWAIIAN ENROLMENT

**Figure 7 - Hawaiian/Part Hawaiian Students Enrolled University of Hawai'i System**



Sources: ODS – IRO\_REGS\_UH (Census)

**Figure 8 - Where Hawaiian/Part Hawaiian Students Enroll (Fall Semester)**



Source: ODS – IRO\_REGS\_UH (Census)

## EMPLOYEE PROFILE

**Table 3 - Staff by Ethnicity and Gender Fall 2008**

UHCC	Total		Exec/Mgr		Admin, Prof & Tech		Civil Service		Instruct Faculty		Other Faculty	
	Count	%	Count	%	Count	%	Count	%	Count	%	Count	%
<b>All Employees</b>	<b>1,819</b>		<b>55</b>	3.0	<b>337</b>	18.5	<b>459</b>	25.2	<b>647</b>	35.6	<b>321</b>	17.6
<b>Asian and Pacific Islander</b>	<b>850</b>	46.7	<b>28</b>	1.5	<b>185</b>	10.2	<b>259</b>	14.2	<b>248</b>	13.6	<b>130</b>	7.1
Chinese	110	6.0	1	0.1	22	1.2	25	1.4	44	2.4	18	1.0
Filipino	184	10.1	3	0.2	34	1.9	91	5.0	27	1.5	29	1.6
Indian Subcontinent	10	0.5	0	0.0	1	0.1	0	0.0	9	0.5	0	0.0
Japanese	519	28.5	24	1.3	124	6.8	137	7.5	153	8.4	81	4.5
Korean	25	1.4	0	0.0	3	0.2	5	0.0	15	0.8	2	0.1
Laotian	0	0.0	0	0.0	0	0.0	0	0.0	0	0.0	0	0.0
Thai	0	0.0	0	0.0	0	0.0	0	0.0	0	0.0	0	0.0
Vietnamese	0	0.0	0	0.0	0	0.0	0	0.0	0	0.0	0	0.0
Other Asian	2	0.1	0	0.0	1	0.1	1	0.1	0	0.0	0	0.0
<b>Hawaiian and Pacific Islander</b>	<b>316</b>	17.4	<b>7</b>	0.4	<b>61</b>	3.4	<b>125</b>	6.9	<b>65</b>	3.6	<b>58</b>	3.2
Guam Chamorro	0	0.0	0	0.0	0	0.0	0	0.0	0	0.0	0	0.0
Hawaiian/Part Hawaiian	264	14.5	6	0.3	57	3.1	98	5.4	54	3.0	49	2.7
Micronesian	0	0.0	0	0.0	0	0.0	0	0.0	0	0.0	0	0.0
Samoan	8	0.4	0	0.0	0	0.0	5	0.3	0	0.0	3	0.2
Tongan	0	0.0	0	0.0	0	0.0	0	0.0	0	0.0	0	0.0
Other Pacific Islander	44	2.4	1	0.1	4	0.2	22	1.2	11	0.6	6	0.3
Mixed Pacific Islander	0	0.0	0	0.0	0	0.0	0	0.0	0	0.0	0	0.0
<b>Mixed Asian Pacific Islander</b>	<b>0</b>	0.0	<b>0</b>	0.0	<b>0</b>	0.0	<b>0</b>	0.0	<b>0</b>	0.0	<b>0</b>	0.0
<b>Other Ethnic Groups</b>	<b>615</b>	33.8	<b>20</b>	1.1	<b>89</b>	4.9	<b>44</b>	2.4	<b>331</b>	18.2	<b>131</b>	7.2
African American	9	0.5	1	0.1	1	0.1	2	0.1	2	0.1	3	0.2
American Indian/Alaska Native	12	0.7	1	0.1	2	0.1	0	0.0	6	0.3	3	0.2
Caucasian	568	31.2	18	1.0	80	4.4	32	1.8	315	17.3	123	6.8
Hispanic	26	1.4	0	0.0	6	0.3	10	0.5	8	0.4	2	0.1
Mixed	0	0.0	0	0.0	0	0.0	0	0.0	0	0.0	0	0.0
<b>No Response</b>	<b>38</b>	2.1	<b>0</b>	0.0	<b>2</b>	0.1	<b>31</b>	1.7	<b>3</b>	0.2	<b>2</b>	0.1
<b>Gender</b>												
Female	1043	57.3	28	1.5	190	10.4	314	17.3	322	17.7	189	10.4
Male	776	42.7	27	1.5	147	8.1	145	8.0	325	17.9	132	7.3

Source: UH Community Colleges Human Resources Office, August 2009

## FACULTY BY RANK, ETHNICITY, AND GENDER

**Table 4 - Full Time Faculty by Rank, Ethnicity, and Gender Fall 2008**

UHCC SYSTEM	Total		Professor		Associate		Assistant		Instructor	
	Count	%	Count	%	Count	%	Count	%	Count	%
<b>All Faculty</b>	<b>968</b>	<b>100</b>	<b>261</b>	27.0	<b>152</b>	15.7	<b>204</b>	21.1	<b>351</b>	36.3
<b>Asian and Pacific Islander</b>	<b>395</b>	40.8	<b>129</b>	13.3	<b>64</b>	6.6	<b>86</b>	8.9	<b>116</b>	12.0
Chinese	62	6.4	21	2.2	12	1.2	12	1.2	17	1.8
Filipino	56	5.8	8	0.8	7	0.7	16	1.7	25	2.6
Indian Subcontinent	9	0.9	3	0.3	1	0.1	3	0.3	2	0.2
Japanese/Okinawan	234	24.2	86	8.9	42	4.3	49	5.1	57	5.9
Korean	15	1.5	6	0.6	1	0.1	4	0.4	4	0.4
Laotian	2	0.2	0	0.0	0	0.0	0	0.0	2	0.2
Thai	0	0.0	0	0.0	0	0.0	0	0.0	0	0.0
Vietnamese	0	0.0	0	0.0	0	0.0	0	0.0	0	0.0
Other Asian	17	1.8	5	0.5	1	0.1	2	0.2	9	0.9
<b>Hawaiian and Pacific Islander</b>	<b>106</b>	11.0	<b>11</b>	1.1	<b>9</b>	0.9	<b>25</b>	2.6	<b>61</b>	6.3
Guam Chamorro	0	0.0	0	0.0	0	0.0	0	0.0	0	0.0
Hawaiian/Part Hawaiian	103	10.6	11	1.1	9	0.9	24	2.5	59	6.1
Micronesian	0	0.0	0	0.0	0	0.0	0	0.0	0	0.0
Samoan	3	0.3	0	0.0	0	0.0	1	0.1	2	0.2
Tongan	0	0.0	0	0.0	0	0.0	0	0.0	0	0.0
Other Pacific Islander	0	0.0	0	0.0	0	0.0	0	0.0	0	0.0
Mixed Pacific Islander	0	0.0	0	0.0	0	0.0	0	0.0	0	0.0
Mixed Asian Pacific Islander	0	0.0	0	0.0	0	0.0	0	0.0	0	0.0
<b>Other Ethnic Groups</b>	<b>462</b>	47.7	<b>121</b>	12.5	<b>79</b>	8.2	<b>93</b>	9.6	<b>169</b>	17.5
African American	5	0.5	0	0.0	1	0.1	2	0.2	2	0.2
American Indian/Alaska Native	9	0.9	2	0.2	0	0.0	1	0.1	6	0.6
Caucasian	438	45.2	118	12.2	78	8.1	88	9.1	154	15.9
Hispanic	10	1.0	1	0.1	0	0.0	2	0.2	7	0.7
Mixed	0	0.0	0	0.0	0	0.0	0	0.0	0	0.0
<b>No Response</b>	<b>5</b>	<b>0.5</b>	<b>0</b>	<b>0.0</b>	<b>0</b>	<b>0.0</b>	<b>0</b>	<b>0.0</b>	<b>5</b>	<b>0.5</b>
<b>Gender</b>										
Female	511	52.8	131	13.5	84	8.7	97	10.0	199	20.6
Male	457	47.2	130	13.4	68	7.0	107	11.1	152	15.7

Source: UH Community Colleges Human Resources Office, September 2009

# STUDENT PROFILE

**Table 5 - Student Enrollment - Ethnicity and Gender Fall 2008**

	All Students		Male		Female		No Data	
	Count	%	Count	%	Count	%	Count	%
<b>All Student</b>	<b>28,444</b>		11,885	41.8	16,457	57.9	102	0.4
<b>Asian and Pacific Islander</b>	<b>19,163</b>	67.4	<b>8,048</b>	28.3	<b>11,051</b>	38.9	<b>64</b>	0.2
Asian	<b>12,297</b>	43.2	<b>5,493</b>	19.3	<b>6,771</b>	23.8	<b>33</b>	0.1
Chinese	1,157	4.1	583	2.0	572	2.0	2	0.0
Filipino	4,963	17.4	2,062	7.2	2,883	10.1	18	0.1
Indian Subcontinent	26	0.1	9	0.0	17	0.1	0	0.0
Japanese	3,369	11.8	1,520	5.3	1,845	6.5	4	0.0
Korean	602	2.1	259	0.9	341	1.2	2	0.0
Laotian	51	0.2	18	0.1	33	0.1	0	0.0
Mixed Asian	1,667	5.9	830	2.9	830	2.9	7	0.0
Other Asian	169	0.6	90	0.3	79	0.3	0	0.0
Thai	46	0.2	8	0.0	38	0.1	0	0.0
Vietnamese	247	0.9	114	0.4	133	0.5	0	0.0
<b>Hawaiian and Pacific Islander</b>	<b>6,866</b>	24.1	<b>2,555</b>	9.0	<b>4,280</b>	15.0	<b>31</b>	0.1
Guam Chamorro	81	0.3	29	0.1	52	0.2	0	0.0
Hawaiian Part Hawaiian	5,960	21.0	2,194	7.7	3,739	13.1	27	0.1
Micronesian	170	0.6	69	0.2	100	0.4	1	0.0
Samoan	234	0.8	93	0.3	141	0.5	0	0.0
Tongan	69	0.2	22	0.1	46	0.2	1	0.0
Mixed Pacific Islander	221	0.8	100	0.4	120	0.4	1	0.0
Other Pacific Islander	131	0.5	48	0.2	82	0.3	1	0.0
<b>Other Ethnic Groups</b>	<b>9,281</b>	32.6	<b>3,837</b>	13.5	<b>5,406</b>	19.0	<b>38</b>	0.1
African American	308	1.1	154	0.5	153	0.5	1	0.0
American Indian/Alaskan Native	131	0.5	43	0.2	88	0.3	0	0.0
Caucasian	4,293	15.1	1,749	6.1	2,526	8.9	18	0.1
Hispanic	646	2.3	257	0.9	386	1.4	3	0.0
Mixed	3,463	12.2	1,412	5.0	2,041	7.2	10	0.0
<b>No Response</b>	<b>440</b>	1.5	<b>222</b>	0.8	<b>212</b>	0.7	<b>6</b>	0.0

Source: ODS – IRO\_BASE\_UH (Census)



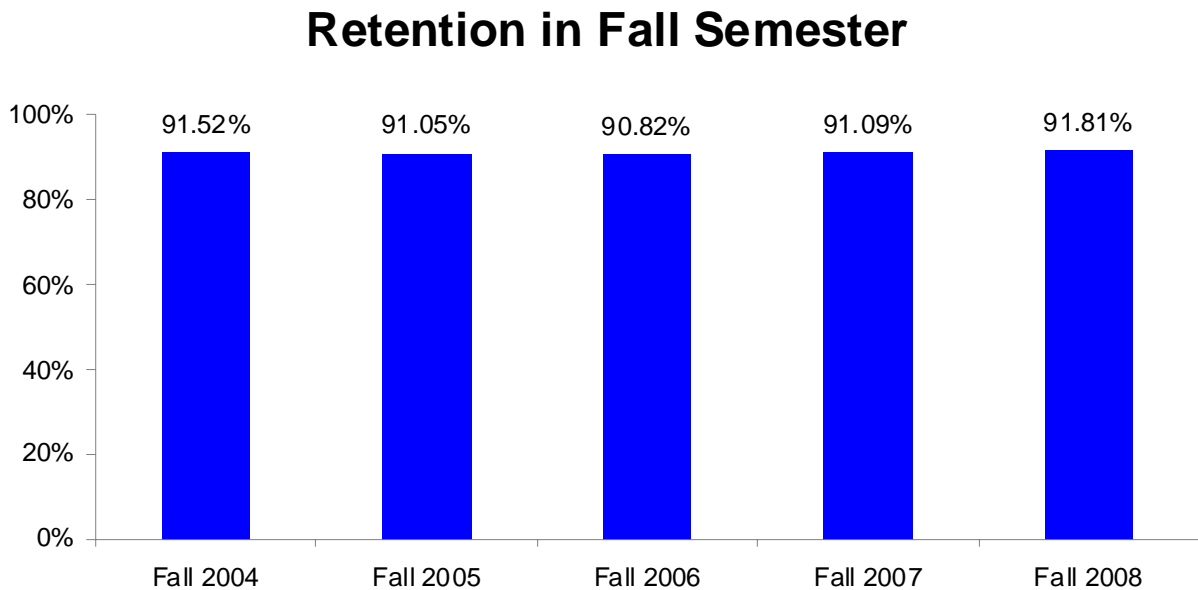
## STUDENT RETENTION, PERSISTENCE, AND DEGREES AND CERTIFICATES AWARDED

The following figures show measures of student success in meeting educational objectives and demonstrating student movement.

### RETENTION

Retention rate refers to those students who are enrolled in a course at the fall census date and who do not drop or withdraw before the end of the semester. Within the University of Hawai'i Community College System, this has also been called Course Completion Rate.

**Figure 9 - Retention**

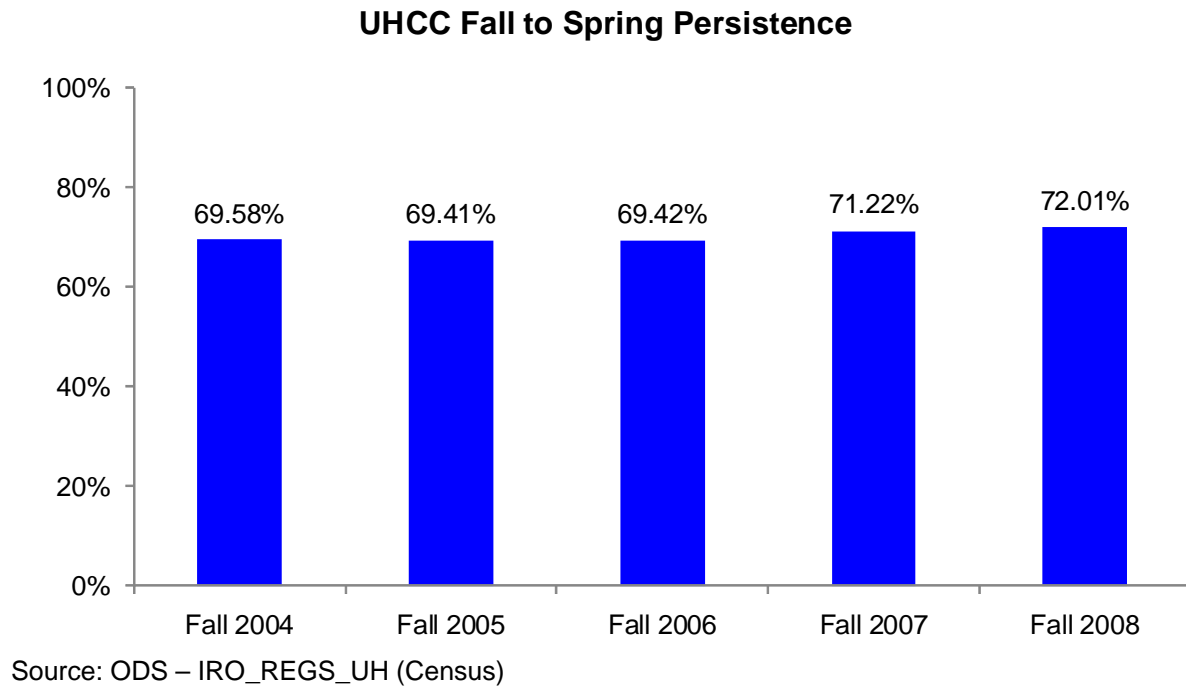


Source: ODS – IRO\_REGS\_UH (End of Semester)

## PERSISTENCE

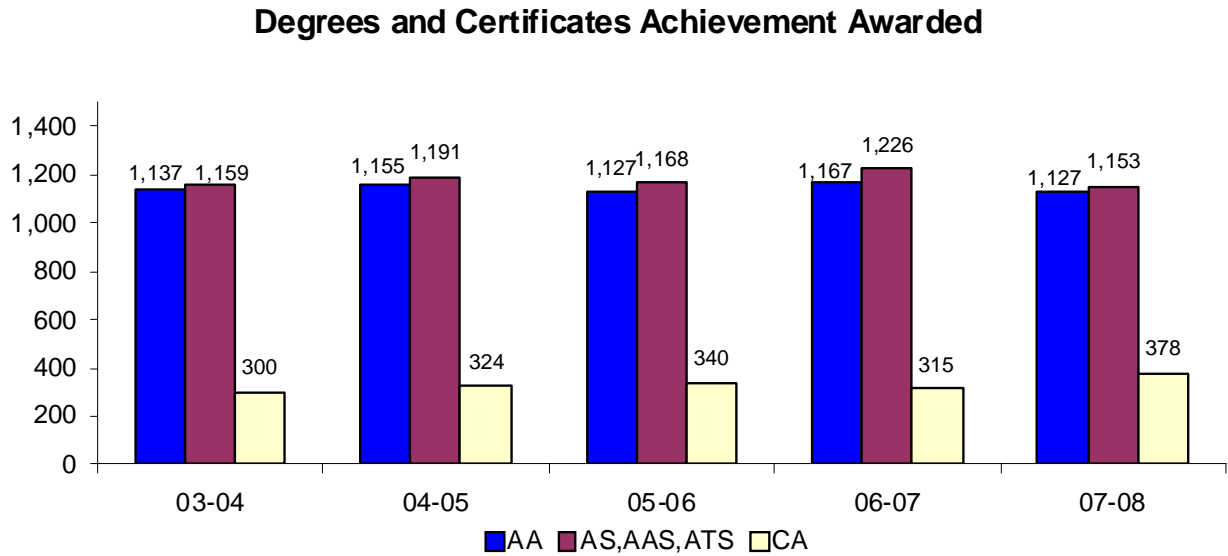
Persistence refers to students enrolled in the fall at a college declared to be their home college and who are also enrolled in that college in the following spring.

**Figure 10 - Persistence**



## DEGREES AND CERTIFICATES AWARDED

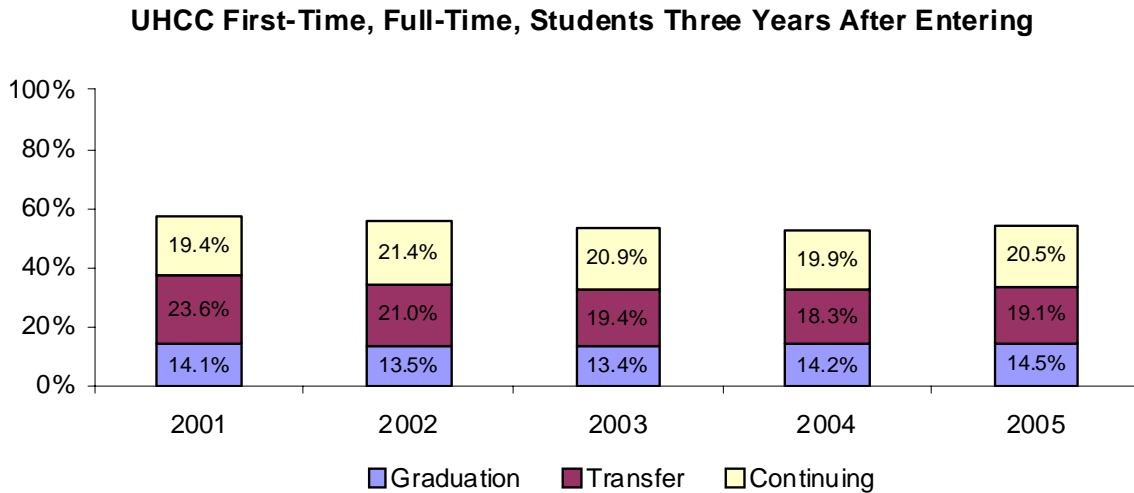
**Figure 11 - Annual Number Degrees and Certificates Awarded**



Source: MAPS – Degrees and Certificates Earned Fiscal Year Table 1

## CONTINUING ENROLLMENT, TRANSFER, AND GRADUATION

**Figure 12 - Continuing Enrollment, Transfer, and Graduation of first-time, full-time, degree-seeking students within 150% of first time enrollment**



Source: IPEDS – Graduation Rate Survey

Notes:

- 1) Numbers are unduplicated
- 2) Graduation – first time, full time students who received a degree or certificate within 150% of time from first time enrollment
- 3) Transfer – first time, full-time students who transfer (as matched by National Student Clearinghouse data) to another postsecondary institution within 150% of time from first time enrollment
- 4) Continuing – first time, full time students who are still enrolled at the same institution within 150% of time from first time enrollment and who have not received a degree or certificate

## TRANSFERS TO COLLEGES AND UNIVERSITIES

Table 6 looks at the transfer behaviors of students whose last term of attendance was between the semesters of Fall 2004 to Summer 2007 compared against National Student Clearinghouse (NSC) data in August 2009. As some students have attended multiple colleges, the first college that a student attended was selected for this analysis.

**Table 6 - Transfer Numbers and Rates**

Last Term Attended	Total Number of Records	Total Transfers		Transfer to UH 4-Year Institutions		Transfers to a UH Community College		Transfers to Hawaii Private Institutions		Transfer to Out of State Institutions	
		N	%	N	%	N	%	N	%	N	%
Fall 2005	5,422	1,986	36.63	587	29.56	594	29.91	131	6.60	674	33.94
Fall 2006	5,537	1,983	35.81	677	34.14	557	28.09	117	5.90	632	31.87
Fall 2007	5,684	1,696	29.84	613	36.14	458	27.00	118	6.96	507	29.89
Fall 2008	7,146	1,332	18.64	526	39.49	246	18.47	128	9.61	432	32.43
Spring 2005	6,772	2,486	36.71	932	37.49	652	26.23	126	5.07	776	31.21
Spring 2006	5,962	2,252	37.77	887	39.39	560	24.87	142	6.31	663	29.44
Spring 2007	6,176	2,282	36.95	970	42.51	599	26.25	106	4.65	607	26.60
Spring 2008	6,912	1,957	28.31	888	45.38	500	25.55	87	4.45	482	24.63
Summer 2005	1,471	922	62.68	400	43.38	160	17.35	38	4.12	324	35.14
Summer 2006	1,404	872	62.11	393	45.07	152	17.43	36	4.13	291	33.37
Summer 2007	1,404	763	54.34	370	48.49	111	14.55	42	5.50	240	31.45
Summer 2008	1,396	606	43.41	253	41.75	94	15.51	31	5.12	228	37.62

Sources:

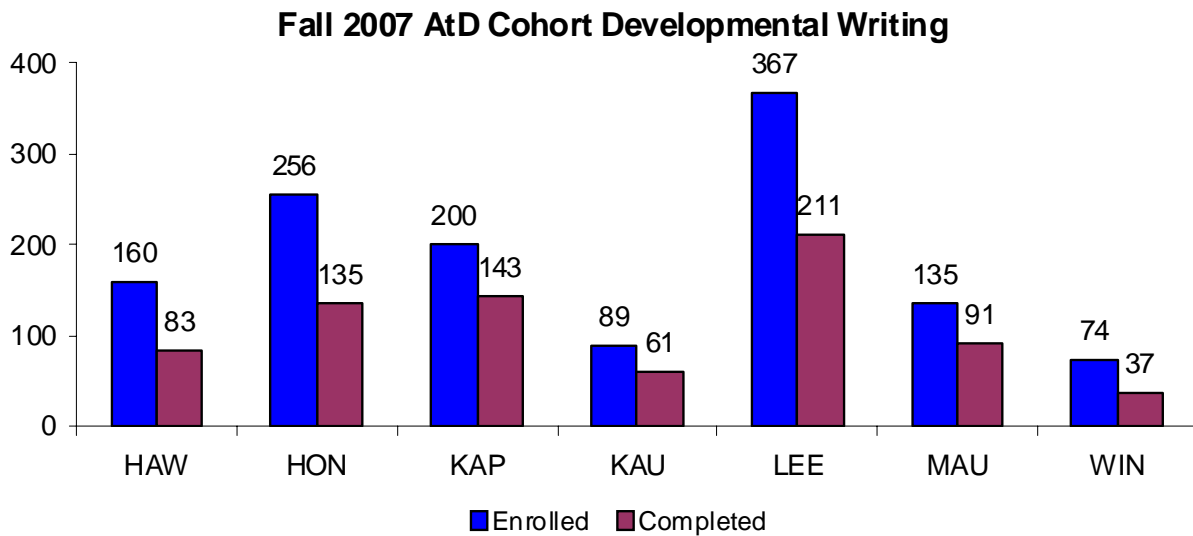
- 1) National Student Clearinghouse
- 2) Operational Data Store (ODS)

## DEVELOPMENTAL EDUCATION COMPLETION

Students lacking academic preparation for their chosen college programs is a national and local concern. The University of Hawaii Community College system is committed to increasing the number and percent of students enrolled in developmental intervention who successfully complete at least one course in the developmental sequence within their first academic year thus making progress towards degree applicable instruction.

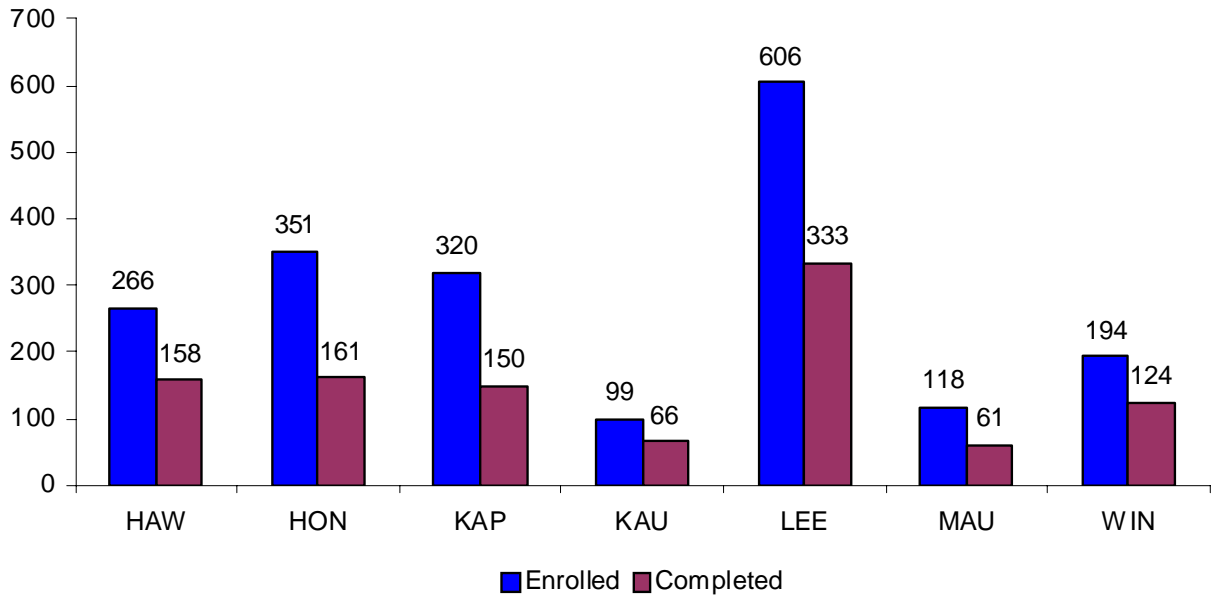
The following are measures of the Achieving the Dream Cohort students who enroll in any developmental course and successfully complete at least one developmental course within the first academic year.

**Figure 13 - Developmental Education Completion**



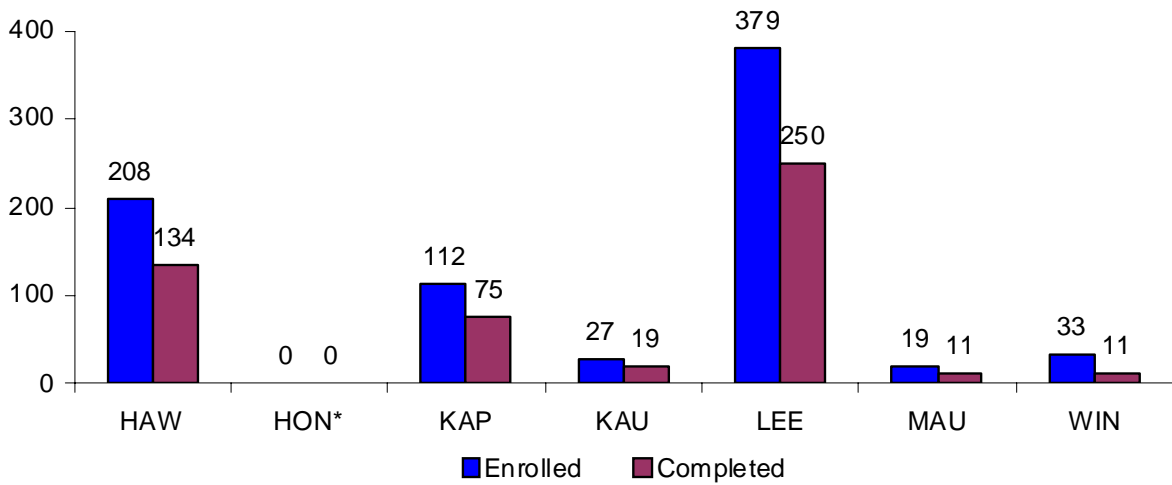
Source: AtD -- eSTATS

### Fall 2007 AtD Cohort Developmental Math



Source: AtD – eSTATS

### Fall 2007 AtD Cohort Developmental Reading

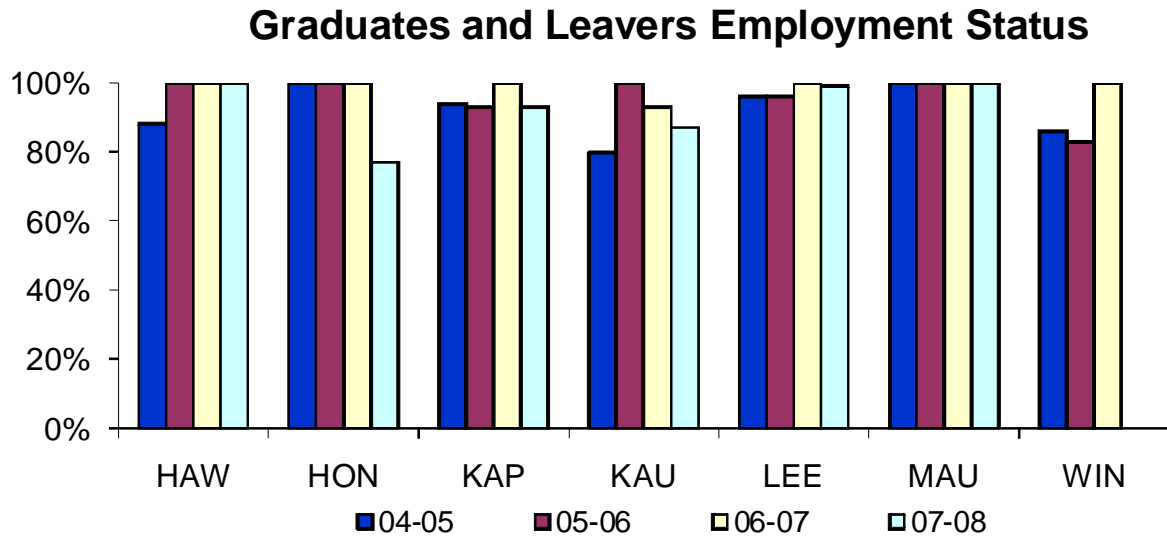


Source: AtD – eSTATS

\*Developmental Reading not offered at Honolulu in 2007-2008

## Job Placement and Preparation

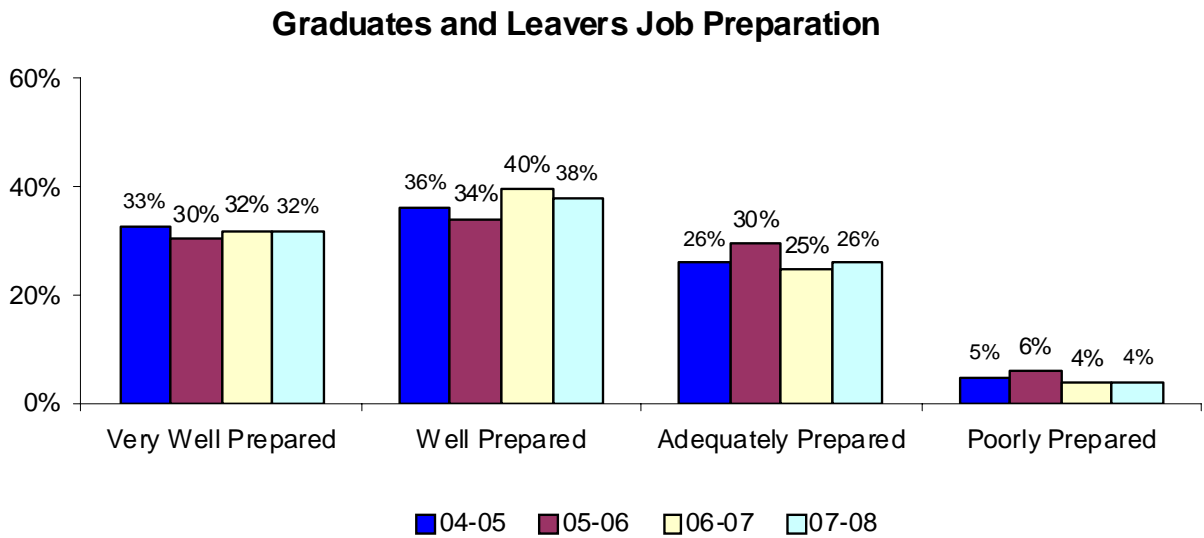
**Figure 14 - Employment Status**



Source: UH Community Colleges campus Graduate and Leavers surveys



**Figure 15 - Graduates and Leavers Job Preparation**

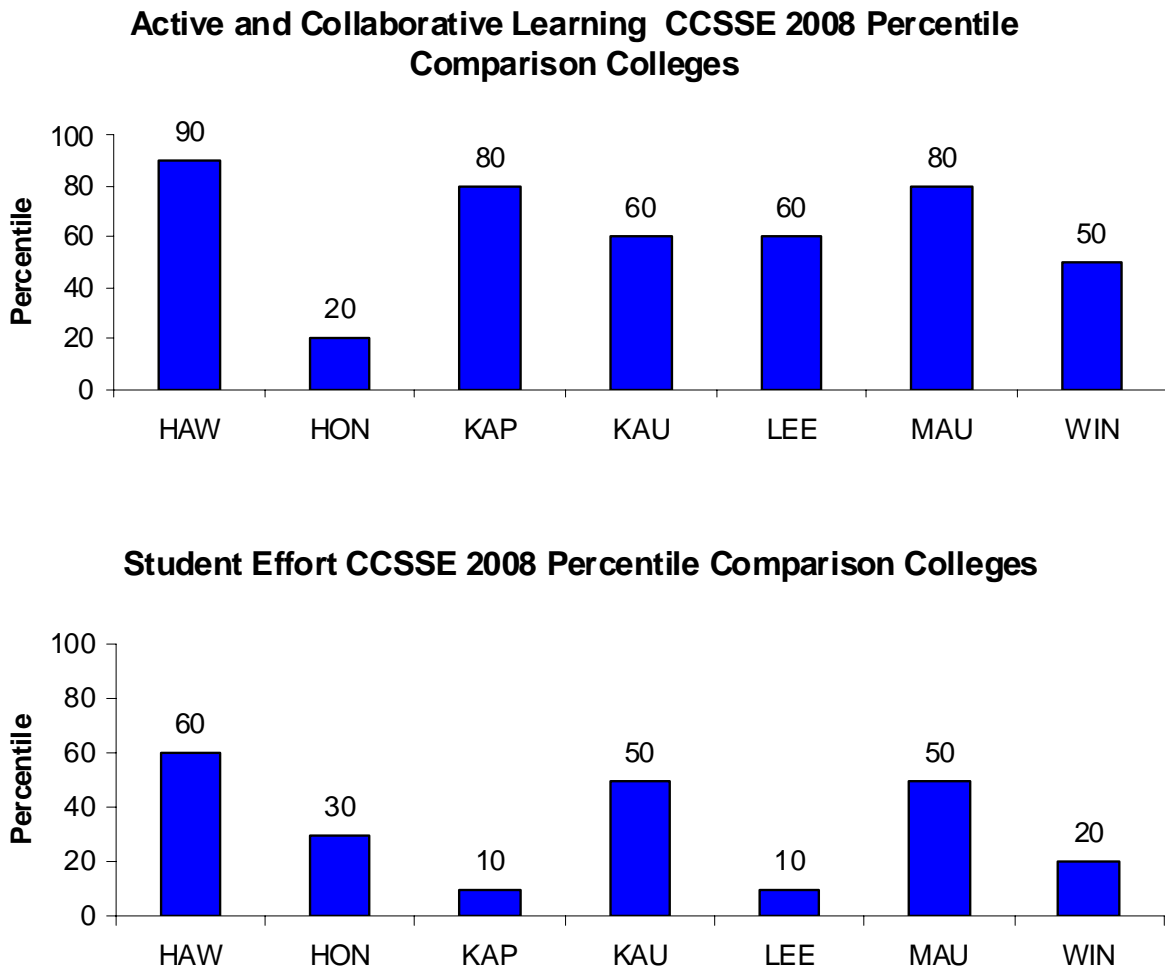


Source: UH Community Colleges campus Graduate and Leavers surveys

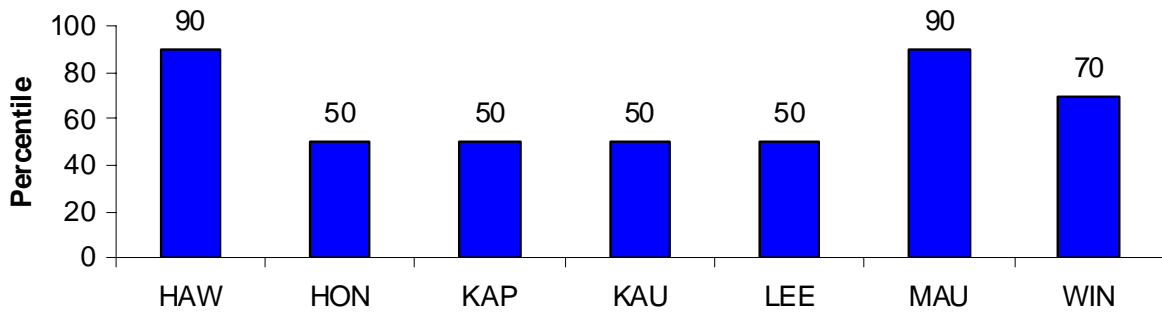
## STUDENT ENGAGEMENT

Research shows that the more actively engaged students are –with college faculty and staff, with other students, and with the subject matter they study – the more likely they are to learn and persist toward achieving their academic goals. Student engagement, therefore, is a valuable yardstick for assessing whether, and to what extent, an institution is employing educational practices likely to produce successful results. Scores are displayed in percentiles against all other Community College Survey Student Engagement (CCSSE) colleges surveyed of similar size.

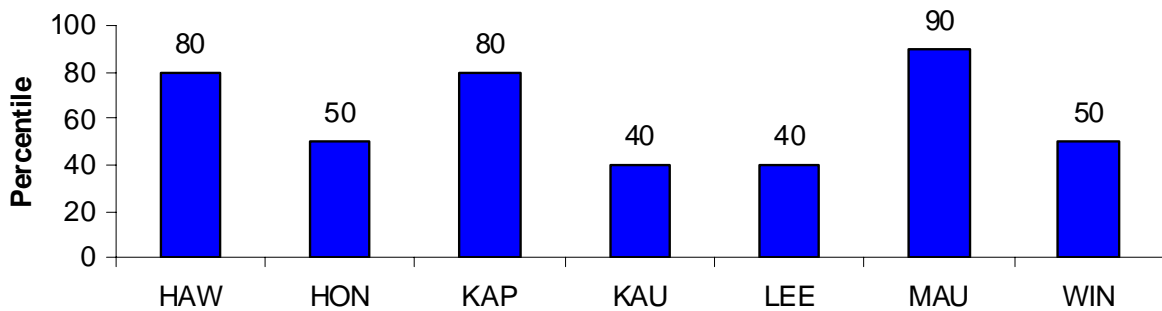
**Figure 16 - CSSE Benchmark Percentiles**



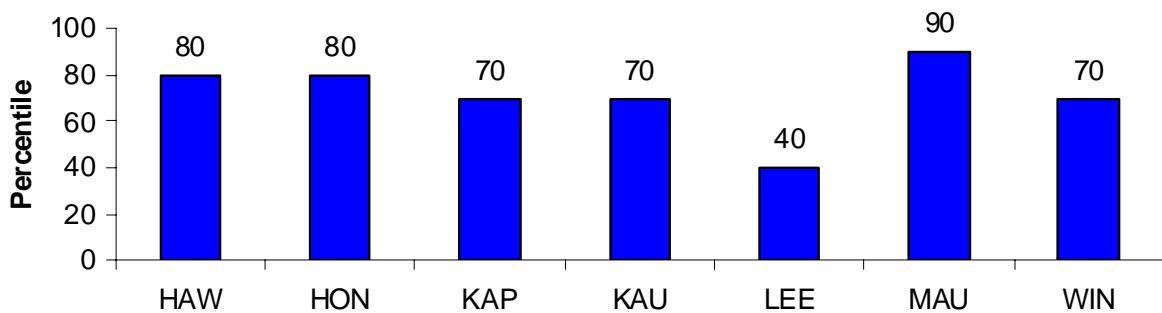
### Academic Challenge CCSSE 2008 Percentile Comparison Colleges



### Student-Faculty Interaction CCSSE 2008 Percentile Comparison Colleges



### Support for Learners CCSSE 2008 Percentile Comparison Colleges



Source: CCSSE 2008 National Report