

WHAT'S COOKING?



Apply now for 10 days of good food, great fun and fantastic learning in our 2009 Culinary Summer Institute for D.O.E. students. This course is designed to expose high school students and 2009 graduates to the American Culinary Federation accredited Culinary Institute of the Pacific at Kauai Community College. Through lectures, field trips and hands-on cooking experience, you will be exposed to culinary arts and the hospitality industry. You will also have the chance to work on building your math skills using computerized software.

The value of the class is over \$2,000. However, students will be charged only \$25. The remainder is being funded through a Carl Perkins Grant. Our goal is to strengthen the channel between the D.O.E. and the Community Colleges.

"What's In It for Me?"

- * You will experience the life of a Culinary Arts major at KCC.
- * You will find out if a career in the culinary and hospitality industry is a good match for your interests.
- * You will create a plan to transition from high school to higher education.
- * You will be exposed to technology used in the culinary industry through the Key Train math software.
- * You will be supplied, for the duration of the class, a professional knife set and two chef uniforms.
- * Graduates of the class will participate in an "ohana luncheon." Students may invite two of their ohana to attend the end of course event.
- * You will learn and have fun!

WHO ARE THE TEACHERS?

- * Ms. Martina Hilldorfer, Chef Instructor, (808) 245-8265.
- * Mr. Billy Gibson, Dining Room & Math Instructor, (808) 245-8365.



For your safety, you must wear non-skid shoes or clogs. A required uniform (chef coat, pants & apron) and professional knife set will be loaned to you by the College.





APPLICATION FORM

Name: _____

Address: _____

Email: _____

Phone: _____

School: _____

Grade in: 2008 - 2009 (9-12*) _____



STEPS TO ENROLL!



Complete this application form and submit to Rhonda Liu, KCC Outreach Counselor by April 30, 2009.



Complete the Compass Placement Test and place into Math 22 or higher and Eng 18 or higher.



Attach a record of health clearance (TB and MMR records)



Qualified students will be notified by mail and must return the Risk and Release form, record of health clearance (TB & MMR records), and a \$25.00 non-refundable check by the date specified to guarantee their space.



***Priority admission will be given to D.O.E. 2009 high school graduates, entering juniors and seniors interested in Culinary Arts.**

Admissions will be on a first-applied, first-qualified basis.

Class size is limited to 10 students.

HEALTH REQUIREMENTS

Hawaii State Law requires all students to meet TB examination and immunization requirements before they attend any post-secondary school in the state. Submit records of clearance to the Admissions & Records Office prior to registration.

Current Proof of Tuberculosis (TB) Examination

- * Test must have been given within 12 months prior to the first day of instruction (June 25, 2008 or later).
- * Examination may be a tuberculin skin test or chest x-ray.
- * Certificate may be issued by the Hawaii Department of Health or a U.S. licensed MD, DO, APRN, or PA.
- * The certificate must include:
 - a. dates of administration and reading of the skin test
 - b. measurement in millimeters of the raised skin reaction
 - c. signature or stamp of the MD, DO, APRN, PA, or clinic.

Measles, Mumps and Rubella (MMR) Immunization

- *Two doses of Measles vaccine are required, with at least one of the two being Measles-Mumps-Rubella (MMR) vaccine; or a blood test showing laboratory evidence of immunity to measles, mumps and rubella signed by a U.S. licensed MD, DO, APRN, or PA may be substituted for a record of immunizations.
- *Record must include complete dates (month/day/year) for each immunization.
- *Required of individuals born after 1956 and did not attend a Hawaii high school; or a foreign immigrant.

For more information about the 2009 Culinary Summer Institute, please contact :

Ms. Rhonda Liu, Outreach Counselor
(808) 245-8261, rhondal@hawaii.edu

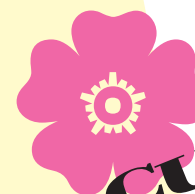
Ms. Bonnie Honma, Professor/Counselor
(808) 245-8257, bhonma@hawaii.edu

Kauai Community College
3-1901 Kaunualii Highway • Lihue, HI 96766

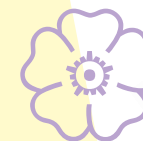


Kaua`i Community College

Culinary Summer Institute for 2009 D.O.E. Graduates & High School Students



CULINARY EXPLORATION



June 25 to July 9, 2009
8:30 a.m. to 3:00 p.m.

