



Are you thinking about furthering your education and career by getting your Master's degree in Social Work?

The Hawaii Child Welfare Education Collaboration, Distance Education Option allows current DHS employees in Child Welfare to continue to work full time and take classes part time to complete their MSW in three years. The project also reimburses students for their tuition and other educational related expenses. Students then will continue employment with DHS for at least two years after their graduation.



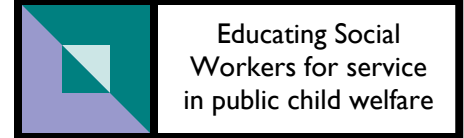
This project is made possible from Federal Funds from the Title IV-E Child Welfare Training Grant.



**A Partnership between the
Hawai'i Department of Human Services and the
University of Hawai'i,
Myron B. Thompson
School of Social Work**

**HCWEC-DE
1800 East West Road
Henke Hall, 207
Honolulu, HI 96822**

**Phone: 808-956-8089
Fax: 808-956-5964
E-mail: jgt@hawaii.edu**

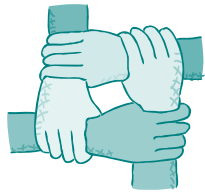


Hawaii Child Welfare Education Collaboration - Distance Education Option



**A Partnership between the
Hawai'i Department of Human Services
and the University of Hawai'i,
Myron B. Thompson
School of Social Work**

The Hawai`i Child Welfare Education Collaboration Distance Education Option (HCWEC – DE)



The Hawai`i Child
Welfare Education
Collaboration –
Distance
Education option

(HCWEC-DE) is a joint effort of the University of Hawaii, Myron B. Thompson School of Social Work (UH SSW) and the Hawai`i Department of Human Services (DHS). It is designed in response to the shortage of staff that have a Masters in Social Work (MSW) in the Hawai`i DHS, Child Welfare Services Branch (CWSB).

The mission of the HCWEC-DE program is to better serve neighbor island families and youth in the child welfare system by having sufficient numbers of MSW level social workers employed by DHS CWSB. The goal of the project is to increase the number of MSW level practitioners in public child welfare on the neighbor islands.



The Program

Currently, the DE Option of HCWEC is open only to DHS employees who are currently working for the CWSB. These students may continue to work full time and attend school part-time in the three year program. Eligibility requirements include a letter of approval from the DHS Director and supervisory staff. Tuition, fees, and required educational expenses will be reimbursed by the project.

Students in the project will have the opportunity to receive a structured and competency based educational experience with an emphasis in public child welfare.

The Application Process

Applications to the HCWEC program for the 2010 cohort are due by **January 15, 2010**. After students have been admitted into the MSW Program, interviews will be scheduled.

Application materials can be mailed to you, or can be found online through the School of Social Work's website at www.hawaii.edu/sswork. You can also email the Project Coordinator at jgt@hawaii.edu or call 808-956-8089 to request materials or for any questions.

Eligibility/Requirements

- Students must first be accepted into the MSW-DE program and entering their first year of study.
- Prospective students must apply separately to the HCWEC-DE project.
- Students must be US Citizens or Permanent Residents (Green Card holders).
- Students must be cleared by a criminal history check.
- Students will need a vehicle for use for their practicum.
- Students will agree to complete a competency-based curriculum in public child welfare.
- Students will work for the Hawai`i Department of Human Services, Child Welfare Services Branch, for two years upon graduation.

| | |
|--|--|
|  | <p>A Partnership between the Hawai`i Department of Human Services and the University of Hawai`i, Myron B. Thompson School of Social Work</p> |
| <p>HCWEC-DE 1800 East West Road Henke Hall, 207 Honolulu, HI 96822</p> <p>Phone: 808-956-8089 Fax: 808-956-5964 E-mail: jgt@hawaii.edu</p> | |