

# **University of Hawai‘i Hawai‘i Community College**

## **Fact Sheet Prepared for the Council of Chancellors Stocktaking March 10, 2004**

Hawai‘i Community College (Hawai‘i CC) is located in the port town of Hilo on the island of Hawai‘i, sometimes described as a tropical mini-continent with its snowcapped mountains, pasture lands, sugar cane fields, tropical rain forests and active volcanoes. Its marine environment, geological diversity and cultural richness are considered educational resources by the faculty and administration. Hawai‘i Community College currently shares the campus of the University of Hawai‘i at Hilo. Hawai‘i Community College offers 22 different vocational programs and a comprehensive liberal arts curriculum, as well as a noncredit Intensive English Program for students who wish to improve their English language skills for academic, professional, or personal reasons.

Providing island-wide access to higher education is a high priority for Hawai‘i Community College. As the only publicly supported, open-door community college on Hawai‘i Island, the College seeks to serve the entire island through distributed sites and the use of technology. The College’s mission is to provide the community with a responsive educational environment that empowers learners to develop skills and knowledge to be responsible and productive in a complex world. To do so, the College offers a range of academic and technical training programs that include degrees, certificates, and short-term training options in Hilo, West Hawai‘i (Kona), and at various locations on the island. Hawai‘i Community College serves more than 2000 students in its credit programs and another 5000 students in non-credit programs annually.

Hawai‘i Community College is fully accredited by the Western Association of Schools and Colleges, Accrediting Commission for Community and Junior Colleges. In addition to the College’s overall accreditation, there are other specialty accreditations. The Associate of Science degree in Nursing is approved by the Hawai‘i Board of Nursing and is accredited by the National League for Nursing Accrediting Commission (NLNAC). The College’s Intensive English Program received accreditation by the Commission on English Language Program Accreditation in 2000, the only program in the State of Hawai‘i to be accredited, and the first community college nationally to achieve this accreditation.

## The Hawai'i CC Experience

There are four priority areas that frame the educational experience at Hawai'i CC.

### Hawaiian Culture

Hawai'i CC will become the center for the study of Hawai'ian Culture, with emphasis on the practice, perpetuation, and evolution of the culture.

### Environment

Hawai'i CC strives to motivate, empower, and inspire learners to become more aware of Hawai'i's unique environment so that human impact is minimized while a sustainable future is insured. Environmental courses and programs offer opportunities to explore issues where problems are identified and solutions are sought.

### Technology

Hawai'i CC is committed to providing and maintaining a broad-based campus-wide technological environment which will enhance learning, teaching, and communication, and facilitate productivity in a changing world.

### Community Work-based Learning

Hawai'i CC will expand the walls of the classroom into the larger community for students to apply the knowledge and skills gained in the classroom so they may experience and learn from the challenges of the workplace and understand and begin to accept the responsibility of being a productive citizen of this community.

## Hawai'i Community College at a Glance



### Comparison of UHCC campuses

<b>Campus</b>	<b>Credit student s</b>	<b>Faculty and Staff</b>	<b>FY 2003 expenditures (000s)</b>
<b>HAWCC</b>	<b>2,183</b>	<b>148</b>	<b>\$ 8,907</b>
HonCC	4,476	279	\$ 17,943
KapCC	7,011	338	\$ 22,199
KauaiCC	1,224	145	\$ 7,488
LeewCC	5,888	292	\$ 17,028
MauCC	3,001	167	\$ 11,277
WindCC	1,761	119	\$ 7,831
System		45	\$ 7,181
<b>TotalCC</b>	<b>25,544</b>	<b>1532</b>	<b>\$ 99,855</b>



## Enrollments by major

About 40% of Hawai'i CC students study liberal arts, while 60% are enrolled in applied and technical fields.

<b>Hawai'i Community College                      Headcount Enrollment By Major                      Academic Year                      1999-2003</b>					
	1999	2000	2001	2003	2003
Liberal Arts	890	865	848	865	877
Vocational Ed	1,271	1,126	1,137	1,210	1,286
Business Ed (1)	321	325	317	290	269
Food Service	136	110	97	70	73
Health Services (2)	249	233	266	296	322
Public Services (3)	274	220	223	224	211
Technology (4)	291	238	234	330	411
Unclassified (5)	117	99	90	93	90
No Data	1			14	93
<b>TOTAL</b>	<b>2,279</b>	<b>2,090</b>	<b>2,075</b>	<b>2,182</b>	<b>2,346</b>

Source: Fall Enrollment Report, University of Hawai'i, Community Colleges, Fall 1999; Fall Enrollment Report, University of Hawai'i, Fall 2000  
 Headcount Enrollment, By Program, Fall 1992 to Fall 2002

### Notes:

- (1) Business Education includes Accounting, Clerical, Data Processing, Hotel Operations, Office Admin & Tech, Marketing, Sec Science
- (2) Health Services include Adult Care Home Oper, Assoc. Degree Nursing, Practical Nursing
- (3) Public Services include Admin of Justice, Early Childhood Ed, Fire/Env Emerg Resp, Human Services
- (4) Technology includes Agriculture, Auto Body Rep & Paint, Auto Mechanics Tech, Carpentry, Diesel Mechanics Tech, Drafting & Eng Aide, Elec Inst & Maint, Electronics Tech, Fashion Tech, Machine Shop Tech, Welding & Sheet Metal
- (5) Unclassified includes regular underclassified and special unclassified, which include concurrent, early admits and auditors.

## Hawai'i Community College and its UH Center, West Hawai'i (UHCWH)

Hawai'i Community College, with its mission as a comprehensive community college for the island of Hawai'i, provides the Associate of Arts degree and select Occupational Technical degrees and certificates at the Kona location. There are currently 425 Hawai'i Community College students taking classes in Kona. These students are included in the counts in the table above.

However, the West Hawai'i Center offers more than community college classes. The UHCWH establishes a permanent UH presence in West Hawai'i and provides access to programs offered elsewhere in the University system. The UH Center, West Hawai'i brokers certificates, bachelors, and masters degrees from UH Hilo, UH West O'ahu, and UH Mānoa using distance education. Currently, there are 78 UH students enrolled in certificate, bachelors, and masters programs in Kona. Current offerings include the following:

Program Offerings	Enrollment	
	System enrollment	West Hawai'i
UH West O'ahu		
Bachelors of Arts in Business Administration	94	6
Bachelors of Arts in Social Sciences	63	22
Certificate of Substance Abuse and Addiction	12	3
UH Hilo		
Bachelor of Arts in English with Writing Emphasis	27	3
Bachelor of Arts in Psychology	29	4
UH Mānoa – School of Nursing and Dental Hygiene		
Bachelors of Science in Nursing	9	2
UH Mānoa – Information and Library Science		
Master Information and Library Science		2
UH Mānoa – College of Education		
Post Baccalaureate Certificate in Secondary Education		
Cohort I – On cite in Kona		18
Cohort II – Statewide	25	10
Master in Special Education	25	2
Bachelor of Elementary Education (Application deadline January 1st)		
Master in Educational Administration (K-12)	30	5
UH Mānoa – College of Business		
Master in Accounting	10	1
Total		78

### Non-Credit Offerings

Hawai'i Community College also serves the community through continuing education and community service programs. Hawai'i Community College's OCET had over 5,000 student enrollments in academic year 2002-2003, in a wide variety of programs.

### Hawai'i Community College Continuing Education & Training Enrollment Academic Years 2002-2003

Description	Enrollment			TOTALS
	Summer 2002	Fall 2002	Spring 2003	
Agriculture/Landscaping/Gardening			239	239
Apprenticeship/Journeyworker	300	206	337	843
Arts & Crafts			77	77
Automotive	11	8	24	43
Business/Finance/Management	151	68	39	258
Computers	266	161	150	577
Culinary Arts/Food Prep	89	66	123	278
Driver's Training/CDL		4		4
Education/Remedial Ed	223	87	30	340
Electrical	37	5		42
English/ESL	65	22	25	112
Family/Child Care	276	342	275	893
Hawaiian Music, Language & Culture			24	24
Health Care	34	21	58	113
Job Skills Prep	161	113	74	348
Music & Dance			16	16
Nursing/Medicine	6	11	26	43
Office/Clerical	53	74	107	234
Other Non-Credit	157	137	23	317
Personal Enrichment	102	11	48	161
Technology/Trades	60	27		87
Visitor Industry		9	8	17
Writing		15		15
<b>TOTAL</b>	<b>1991</b>	<b>1387</b>	<b>1703</b>	<b>5081</b>

## Staffing

Hawai'i CC's faculty and staff headcount has remained relatively stable over the past five years at around 150 employees.

### HEADCOUNT OF FACULTY/STAFF BY PROGRAM JUNE 1999 TO JUNE 2003

PROGRAM	1999		2000		2001		2002		2003	
	F	S	F	S	F	S	F	S	F	S
<u>TOTAL</u>	96	50	97	54	94	62	99	59	95	58
<u>LIBERAL ARTS</u>		3		3		3		3		3
<b>Humanities</b>	7		6		6		7		6	
<b>Math &amp; Natural Science</b>	13		14		14		12		10	
<b>Social Science</b>	7	1	7	1	7	1	6	1	6	1
<b>English</b>	12		12		11		13		12	
<u>CAREER &amp; TECHNICAL ED</u>										
<b>Business Ed</b>	11	1	10	1	10	1	10	1	12	1
<b>Nursing</b>	9	1	9	1	8	1	8	1	9	1
<b>Hospitality</b>	4		4		4		4		4	
<b>Applied Technical Ed</b>	18	2	18	2	18	2	18	1	18	1
<u>APT</u>		21		22		27		25		25
<u>E&amp;M</u>		6		6		6		6		5
<u>OTHER CLERICAL</u>		15		18		21		21		21
<b>OTHER FACULTY (Non-instructional)</b>	15		17		16		21		18	

F = Faculty

S = Staff

## Federal Grants

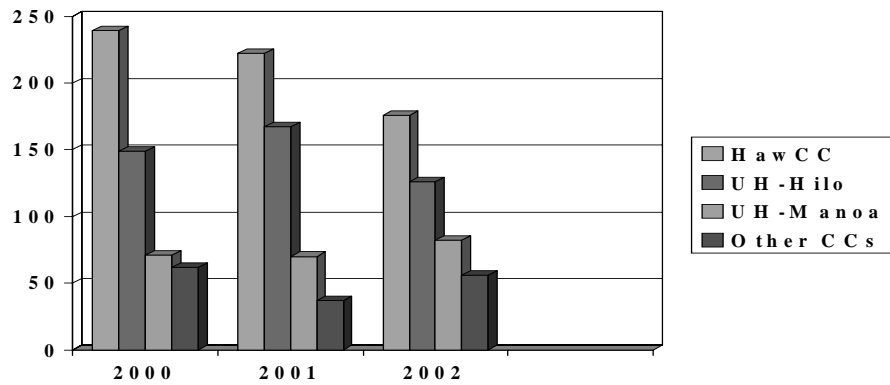
Hawai'i Community College also benefits from several federal grants, including:

- US Department of Education Title III Grant
- US Department of Labor – Rural Development Project
- National Science Foundation – Agroforestry & Forest Ecosystem Management Grant
- US Department of Agriculture – Strengthening Agriculture Degree
- Perkins
- EPSCor
- Systems of Service in Island Societies: Hawai'i Pacific Islands, Campus Compact – Service Learning Program

**About our students and community**

For those Big-Island high school students who choose the University of Hawai‘i, Hawai‘i Community College is their campus of choice. Due to demographic factors, the number of high school graduates has decreased in the early 2000’s. However, our enrollments have held steady and increased slightly in fall 2003.

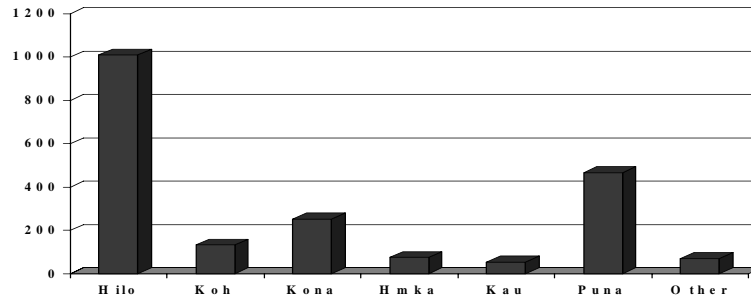
Enrollment of Hawaii Island High School Graduates, 2000, 2001, 2002



10/14/03

The majority of Hawai‘i Community College students come from communities close to Hilo.

Enrollment by Location

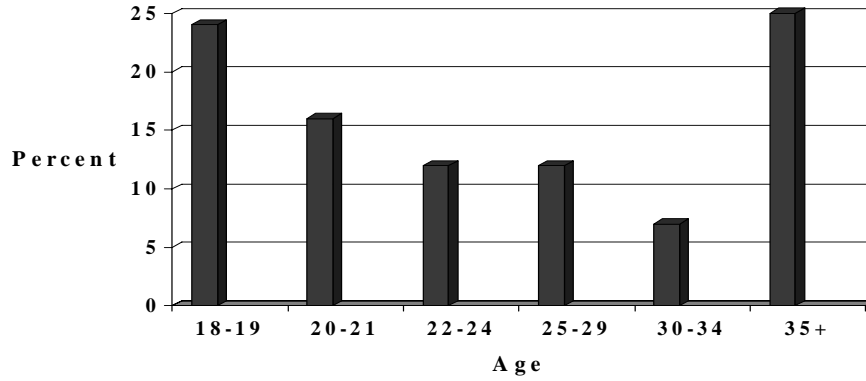


10/14/03

Increasingly, our student body includes many non-traditional students over the age of 35.



## Enrollments by Age



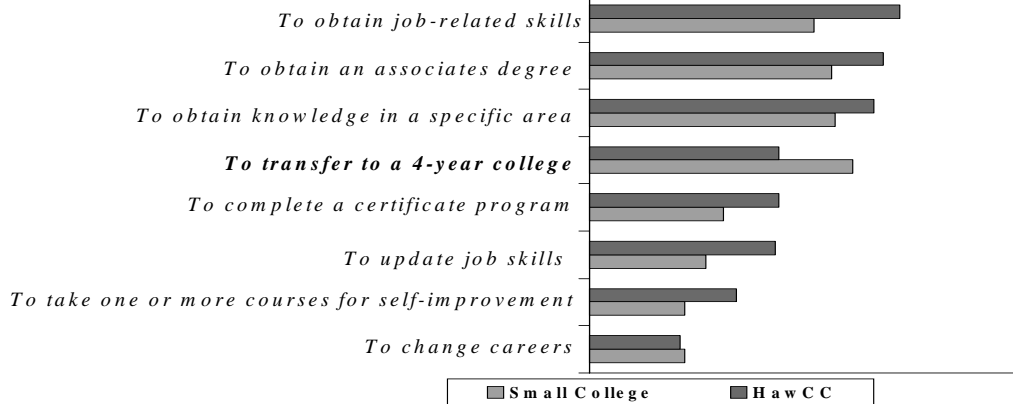
10/14/03



Compared to students at other small community colleges in the U.S., Hawai'i Community College students are focused on job related skills, and fewer transfer to a 4-year college.



## Student Goals



10/14/03



Hawai'i County faces many challenges. It may be the poorest county in the state, with 11% of families under the federal poverty level compared to 6% statewide. And while Hawai'i County has 12% of the population, it has 21% of food stamp recipients, 21% of those receiving TANF, and 25% of those who receive general assistance. There is also a grave problem with substance abuse. Drug problems and arrests for "ice" and related offenses are up nearly 900%. Over 50% of the island's public high school students are considered economically disadvantaged, with limited English proficiency, or in need of special education. Of persons 25 and older, 22% have no high school diploma. Of those with a high school diploma, 50% have no college degree. A growing number of students are leaving the state for college (nearly 30% in Hawai'i, versus about 18% nationally). Many of the incoming students for Hawai'i Community College are not ready for college level classes, and need remedial coursework during their first year of college. Our smaller class sizes and the dedication of our faculty are essential to the success of these students.



## Most Are Not Ready

COMPASS Placement Test Level  
By Percentage of Applicants

	Developmental (7 <sup>th</sup> to 10 <sup>th</sup> Gr.)	Remedial ( $< 7^{\text{th}}$ )	Less than College
Reading	47	6	53
Writing	48	18	68
Math	60	30	90

10/14/03

