

# HONOLULU COMMUNITY COLLEGE

Table 1. Honolulu Community College Fall Student Enrollment

Headcount	Number
FY 2001-02	4,653
FY 2002-03	4,478
FY 2003-04	4,238
FY 2004-05	4,336
FY 2005-06	4,183
FY 2006-07	

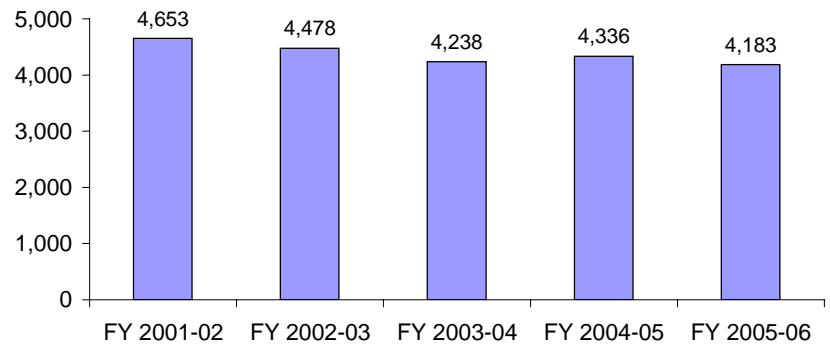


Table 2. Honolulu Community College Semester Hours Taught (Equivalent SH)

Equivalent SH	Number
FY 2001-02	2,055
FY 2002-03	1,935
FY 2003-04	1,857
FY 2004-05	1,820
FY 2005-06	NA
FY 2006-07	

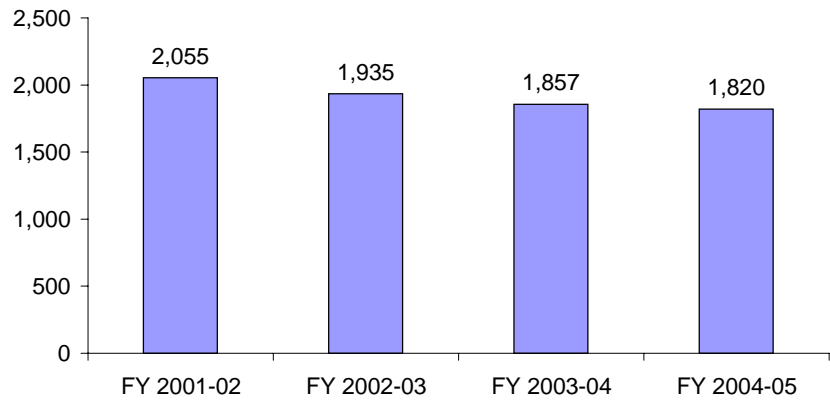


Table 3. Honolulu Community College Student Semester Hours (SSH) (Fall)

SSH (Fall)	Number
FY 2001-02	40,641
FY 2002-03	39,945
FY 2003-04	36,695
FY 2004-05	37,141
FY 2005-06	35,989
FY 2006-07	

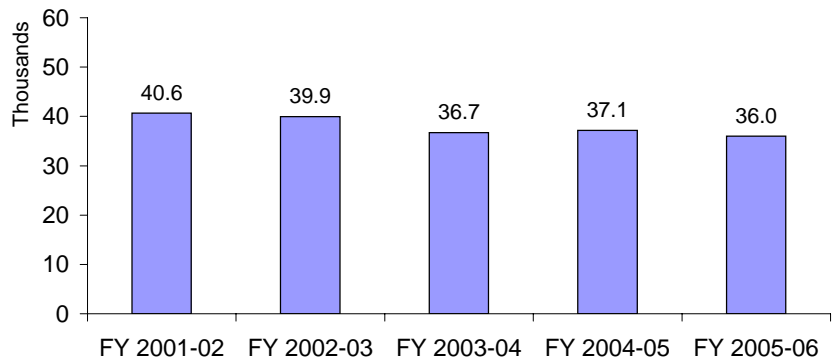


Table 4. Honolulu Community College Analytical FTE Faculty (Fall)

Analytical FTE Faculty	Number
FY 2001-02	156.82
FY 2002-03	154.13
FY 2003-04	150.43
FY 2004-05	148.60
FY 2005-06	NA
FY 2006-07	

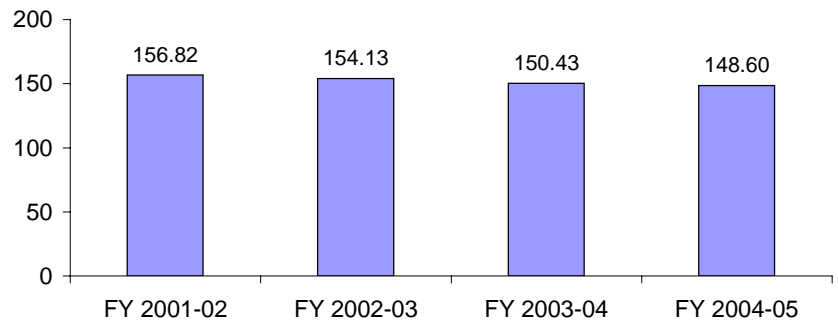


Table 5. Honolulu Community College FTE Fall Course Enrollment

FTE Fall Course Enrollment	Number
FY 2001-02	2,704
FY 2002-03	2,656
FY 2003-04	2,444
FY 2004-05	2,475
FY 2005-06	2,401
FY 2006-07	

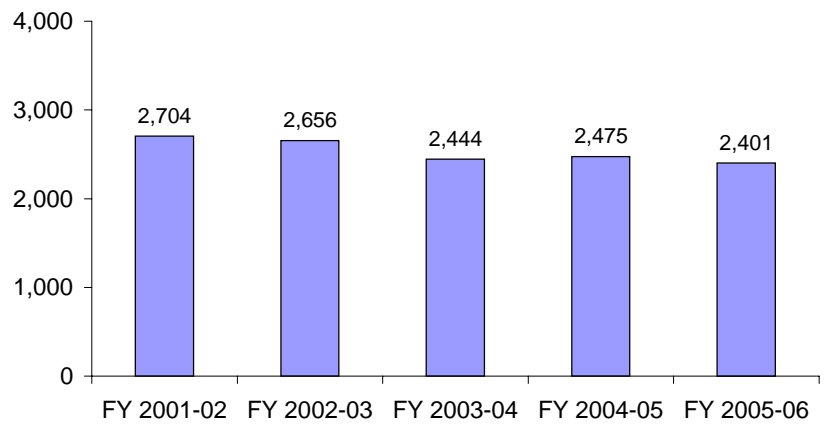


Table 6. Honolulu Community College Spring FTE Spring Course Enrollment

FTE Spring Course Enrollment	Number
FY 2001-02	2,504
FY 2002-03	2,421
FY 2003-04	2,262
FY 2004-05	2,270
FY 2005-06	2,112
FY 2006-07	

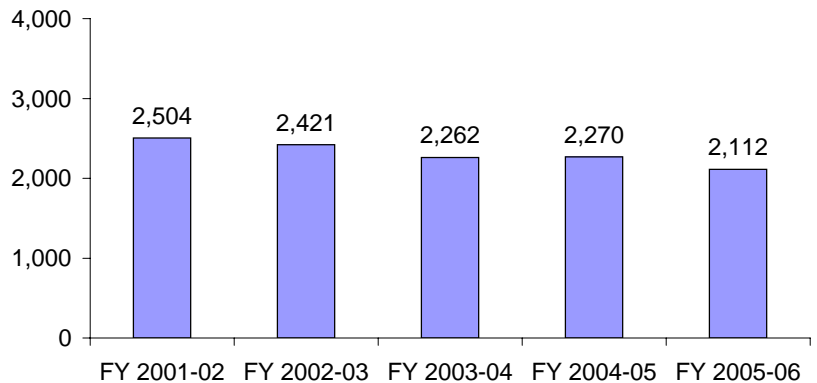


Table 7. Honolulu Community College Number of Classes (Fall)

Number of Classes (Fall)	Number
FY 2001-02	625
FY 2002-03	591
FY 2003-04	565
FY 2004-05	591
FY 2005-06	580
FY 2006-07	

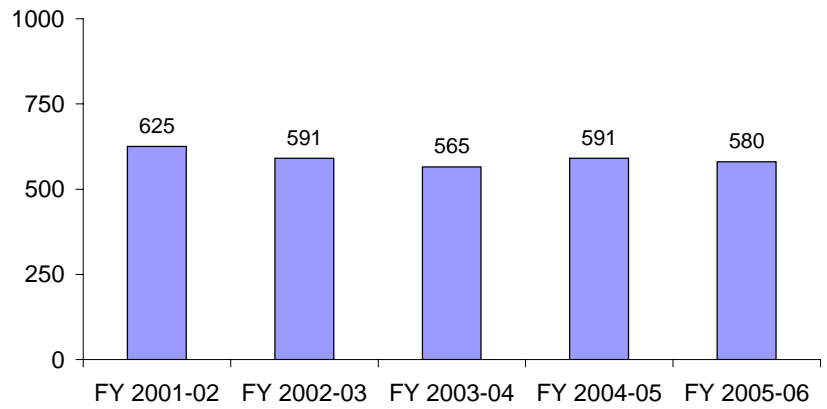


Table 8. Honolulu Community College Student Faculty Ratio (Fall)

Student Faculty Ratio (Fall)	HON	UHCC
FY 2001-02	17.24	16.04
FY 2002-03	17.23	16.21
FY 2003-04	16.25	17.23
FY 2004-05	16.66	16.51
FY 2005-06	NA	NA
FY 2006-07		

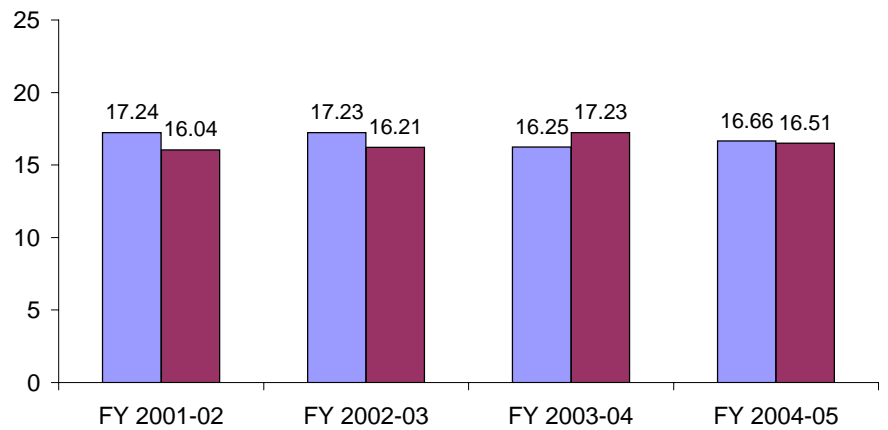


Table 9. Honolulu Community College Semester Hours per FTE Faculty (Fall)

SH per FTE Faculty (Fall)	HON	UHCC
FY 2001-02	13.10	11.85
FY 2002-03	12.55	11.74
FY 2003-04	12.34	11.85
FY 2004-05	12.25	11.65
FY 2005-06	NA	NA
FY 2006-07		

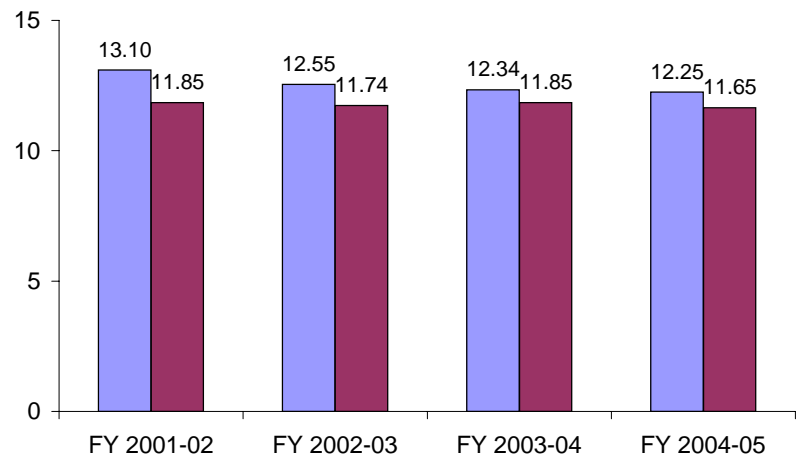


Table 10. Honolulu Community College Average Class Size (Fall)

Average Class Size (Fall)	HON	UHCC
FY 2001-02	22	21
FY 2002-03	22	21
FY 2003-04	22	22
FY 2004-05	22	21
FY 2005-06	21	21
FY 2006-07		

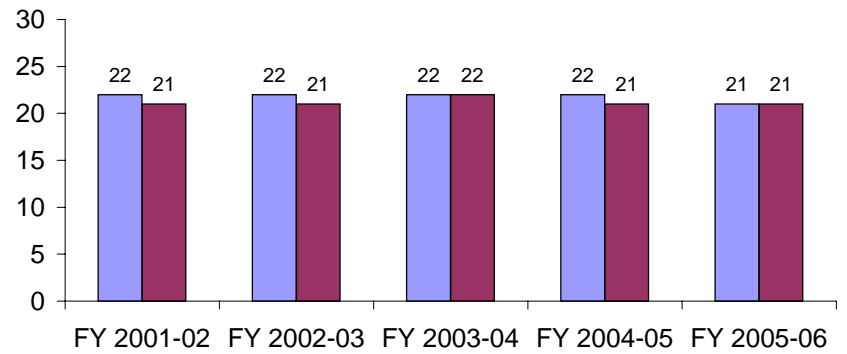


Table 11. Honolulu Community College Direct Cost of Instruction per SSH (Annual)

Direct Cost Instruction	Amount
FY 2001-02	\$137
FY 2002-03	\$163
FY 2003-04	\$177
FY 2004-05	NA
FY 2005-06	NA
FY 2006-07	

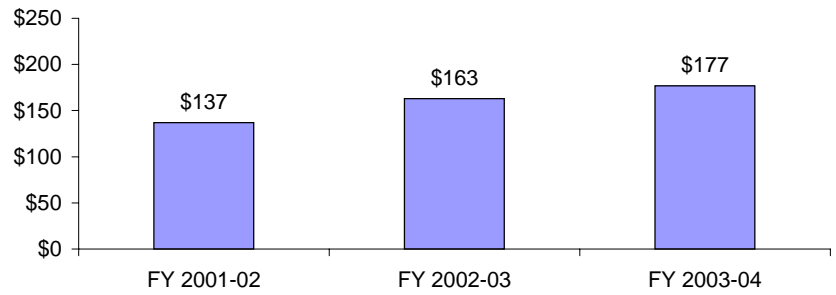


Table 11a. Community Colleges Direct Cost of Instruction per SSH (2003-04)

Cost Instruction 2003-04	Amount
HAW	\$183
HON	\$163
KAP	\$142
KAU	\$224
LEE	\$121
MAU	\$148
WIN	\$116

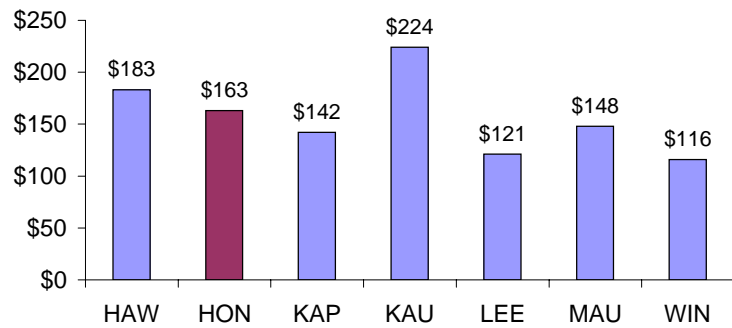


Table 12. Honolulu Community College General Funds + Tuition and Fees Special Funds per FTE Course Enrollment (Annual)

GF + TFSF per FTE	HON	UHCC
FY 2001-02	\$3,309	\$3,249
FY 2002-03	\$3,447	\$3,295
FY 2003-04	\$3,882	\$3,482
FY 2004-05	\$4,035	\$3,569
FY 2005-06	\$4,452	\$3,894
FY 2006-07		

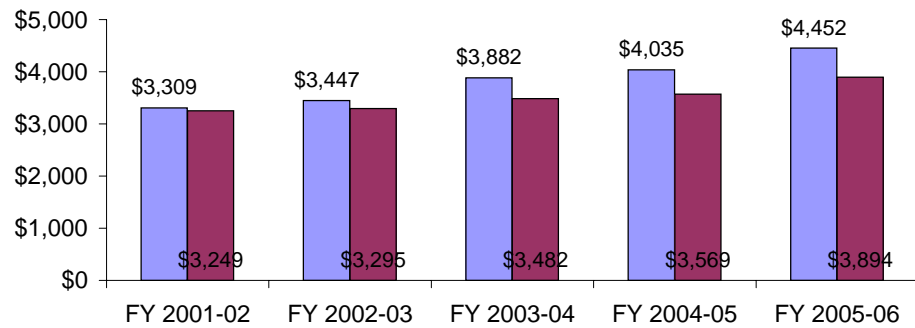


Table 13. Honolulu Community College General Funds (Position Count)

General Funds (PC)	Positions
FY 2001-02	275.00
FY 2002-03	279.00
FY 2003-04	279.00
FY 2004-05	280.00
FY 2005-06	286.00
FY 2006-07	313.00

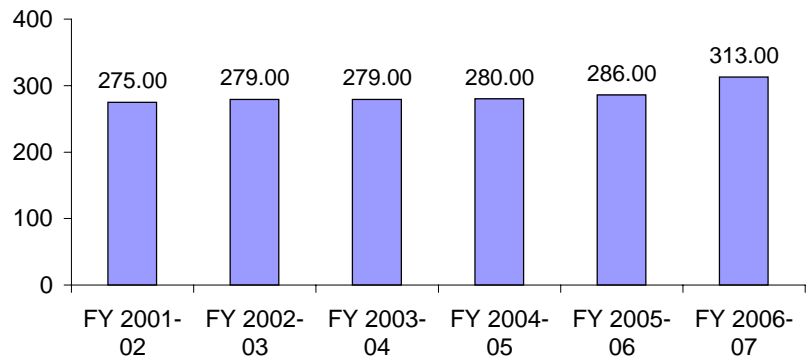


Table 14. Honolulu Community College General Funds (\$)

General Funds (\$)	Amount
FY 2001-02	\$14,116,487
FY 2002-03	\$14,949,199
FY 2003-04	\$15,305,366
FY 2004-05	\$15,981,383
FY 2005-06	\$16,817,816
FY 2006-07	\$20,761,764

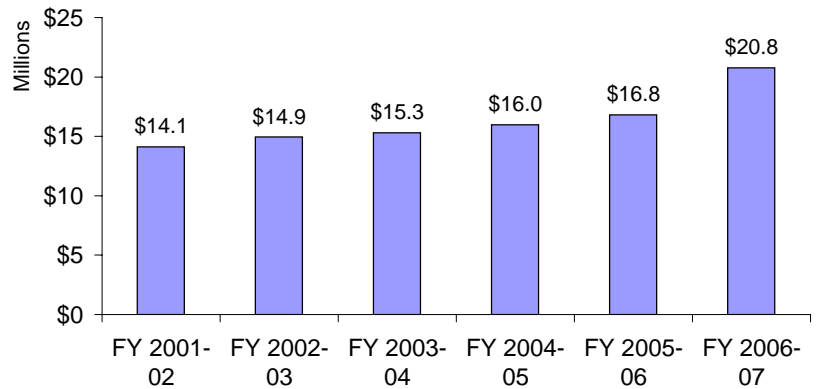


Table 15. Honolulu Community College Tuition and Fees Special Fund (Position Count)

TF Special Fund (PC)	Positions
FY 2001-02	0.00
FY 2002-03	0.00
FY 2003-04	0.00
FY 2004-05	0.00
FY 2005-06	0.00
FY 2006-07	0.00

Table 16. Honolulu Community College Tuition and Fees Special Fund (\$)

T&F Special Fund (\$)	Amount
FY 2001-02	\$3,116,834
FY 2002-03	\$2,553,415
FY 2003-04	\$2,962,490
FY 2004-05	\$3,164,858
FY 2005-06	\$3,272,406
FY 2006-07	\$3,667,044

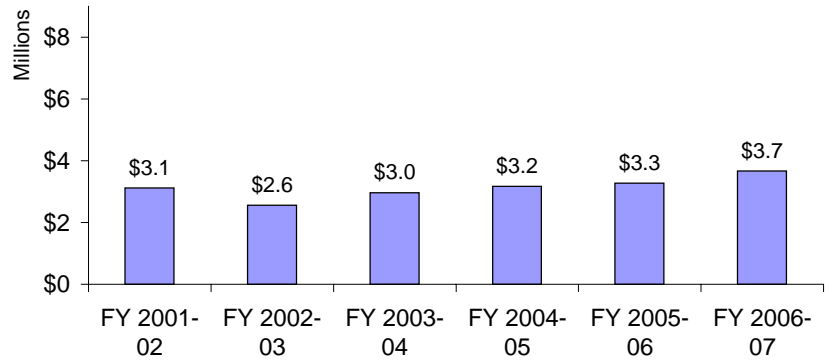


Table 17. Honolulu Community College Total Base Funding (Position Count)

Base Funding (PC)	Positions
FY 2001-02	275.00
FY 2002-03	279.00
FY 2003-04	279.00
FY 2004-05	280.00
FY 2005-06	286.00
FY 2006-07	313.00

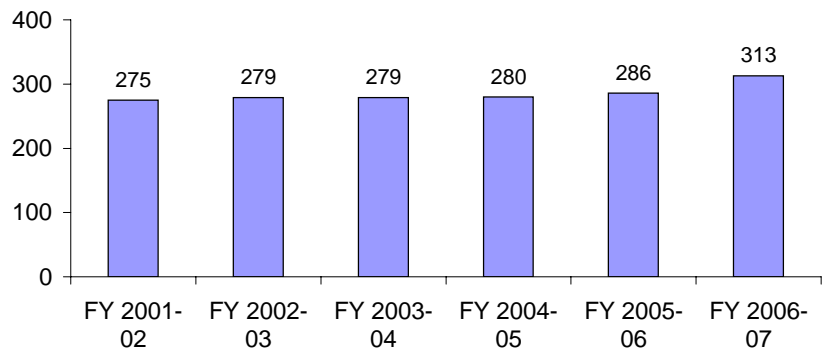
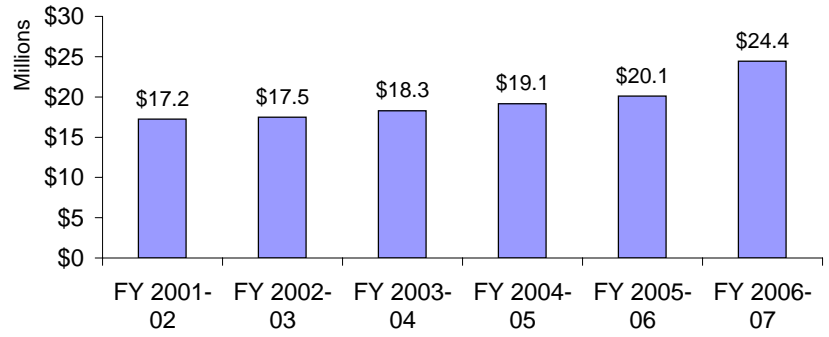


Table 18. Honolulu Community College Total Base Funding (\$)

Base funding (\$)	Amount
FY 2001-02	\$17,233,321
FY 2002-03	\$17,502,614
FY 2003-04	\$18,267,856
FY 2004-05	\$19,146,241
FY 2005-06	\$20,090,222
FY 2006-07	\$24,428,808



Compiled: Academic Planning, Assessment, and Policy Analysis, OVPCC

Sources of Data: UH IRO Stocktaking Presentation FB 2007 - 2009