

**University of Hawaii  
Hawaii Community College  
and  
University of Hawaii Center at West  
Hawaii**

**Stocktaking  
April 24, 2006**



## **Introduction**

Hawaii Community College (Hawaii CC) is located in the port town of Hilo on the island of Hawaii. It is sometimes described as a tropical mini-continent with its snowcapped mountains, pasture land, sugar cane fields, tropical rain forests and active volcanoes. Its marine environment, geological diversity and cultural richness are considered educational resources by the faculty and administration. Hawaii Community College offers 22 different vocational programs and a comprehensive liberal arts curriculum, as well as a noncredit Intensive English Program for students who wish to improve their English language skills for academic, professional, or personal reasons. Most recently, Hawaii Community College has created certificate programs in Digital Media Arts and Substance Abuse Counseling.

The University of Hawaii Center at West Hawaii is one of three University Centers established by the Board of Regents (BOR) in June 1996. The Center offers associate degrees in Liberal Arts and Career and Technical Education programs. The UH Center at West Hawaii serves as a conduit to the four year UH institutions of Manoa, Hilo, and West Oahu. It currently supports distance delivered options for West Hawaii residents to complete five bachelor's degrees, five master's degrees, and three graduate certificates.

Hawaii Community College is fully accredited by the Western Association of Schools and Colleges, Accrediting Commission for Community and Junior Colleges. In addition to the College's overall accreditation, there are other specialty accreditations. The Associate of Science degree in Nursing is approved by the Hawaii Board of Nursing and is accredited by the National League for Nursing Accrediting Commission (NLNAC). The College's Intensive English Program received re-accreditation by the Commission on English Language Program Accreditation, ours is the only program in the University of Hawaii System to be accredited, and the first community college nationally to achieve this accreditation. The Hawaii Community College's Children's Center was awarded accreditation by the National Association for the Education of Young Children in February 2006.

## **A Historical Perspective**

In 1941 Hawaii Vocational School was established under the Department of Education and was later renamed Hawaii Technical School in 1956. Then in 1969 the administration of Hawaii Technical School was transferred to the University of Hawaii. A year later the University of Hawaii at Hilo was created through the merger of Hilo College and Hawaii Technical School. With this merger, Hawaii Technical School became Hawaii Community College. The University Center at West Hawaii was officially established in Kona in 1987 and became part of the Hawaii CC Ohana a year later. Then in 1991, Hawaii Community College celebrated its 50th Anniversary as an institution and embarked on a new beginning as an independent community college.

### **The College's Vision & Mission**

The vision of Hawaii Community College is to serve the entire Island of Hawaii through distributed sites. Located in communities around the island, the College's programs will provide access to training and educational opportunities, and support local economic development initiatives.

The mission of Hawaii CC is to provide the community with a responsive educational environment that empowers learners to develop skills and knowledge to be responsible and productive in a complex world.

### **Four Cornerstones – The Hawaii Community College Learning Experience**

Learning takes place in many different forms – in the classroom, on the internet, or in the workplace. With the offerings of new and exciting programs and the use of technology, we bring higher education within the reach of every resident of Hawaii Island. There are four priority areas that frame the learning experience at Hawaii Community College: Hawaiian Culture, Environment, Technology, and Community Work-based Learning.

**Hawaiian Culture** – Hawaii CC will become the center for the study of Hawaiian Culture, with emphasis on the practice, perpetuation, and evolution of the culture.

**Environment** – Hawaii CC strives to motivate, empower, and inspire learners to become more aware of Hawaii's unique environment so that human impact is minimized while a sustainable future is insured.

**Technology** – Hawaii CC is committed to providing and maintaining a broad-based campus-wide technology environment which will enhance learning, teaching and communication, and facilitate productivity in a changing world.

**Community Work-Based Learning** – Hawaii CC will expand the walls of the classroom into the larger community for students to apply the knowledge and skills gained in the classroom so they may experience and learn from the challenges of the workplace and understand and begin to accept the responsibilities of being a productive citizen of this community.

### Hawaii Community College at a Glance

On Hawaii Island the need for educational opportunities define every aspect of our college's vision and mission. Unique amongst our community colleges is Hawaii Community College, as it serves the diverse populations within our communities. Many of our students are older, non traditional and academically under prepared for entry level college courses. Most are not ready.

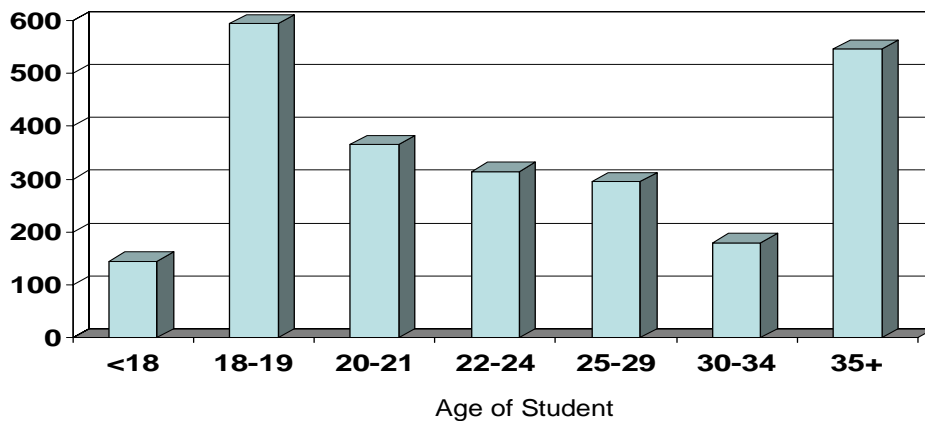
### How great is the need?

## COMPASS Placement Test Level By Percentage of Applicants

	Developmental (7 <sup>th</sup> to 10 <sup>th</sup> Gr.)	Remedial (< 7 <sup>th</sup> )	Less than College
Reading	47	6	53
Writing	48	18	68
Math	60	30	90

Source: Control DB to update Banner- HawCC IT Spec

## Enrollments by Age Fall 2004

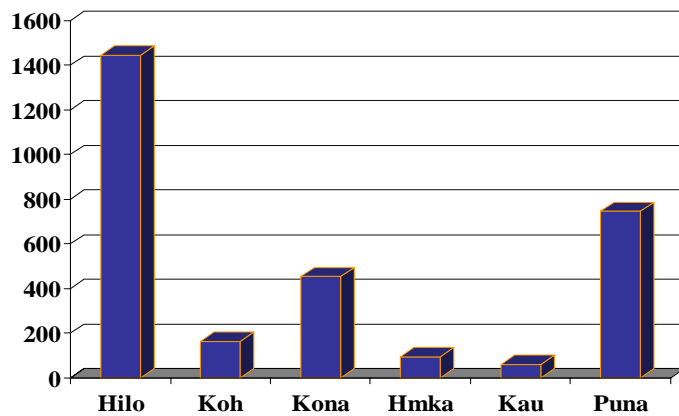


Source: MAPS Fall Enrollment Report, University of Hawaii, Community Colleges Fall 2004, Table 3.

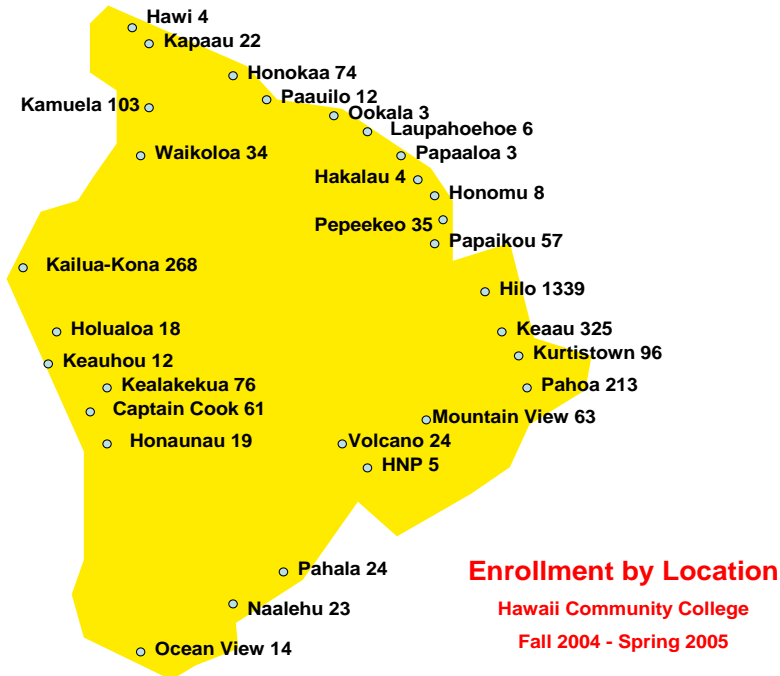
### Island-wide Enrollment

The geographic size of Hawaii Island poses another challenge for our population seeking higher educational opportunities. Student populations are scattered over 4028 square miles of land. The map below identifies enrollment by location for the AY 2004-2005.

## Enrollment by Location AY 2005



Source: ODS Enrollment data for HawCC



### Enrollment by Location

Hawaii Community College  
Fall 2004 - Spring 2005

Source: ODS enrollment data for HawCC Fall 04 and Spring 05.

# HawCC Enrollment Statistics

- Career and Technical 60%
- Liberal Arts 40%
  
- Male 37%
- Female 63%

Source: ODS Data

- More than 90% of the students are classified as residents for tuition purposes

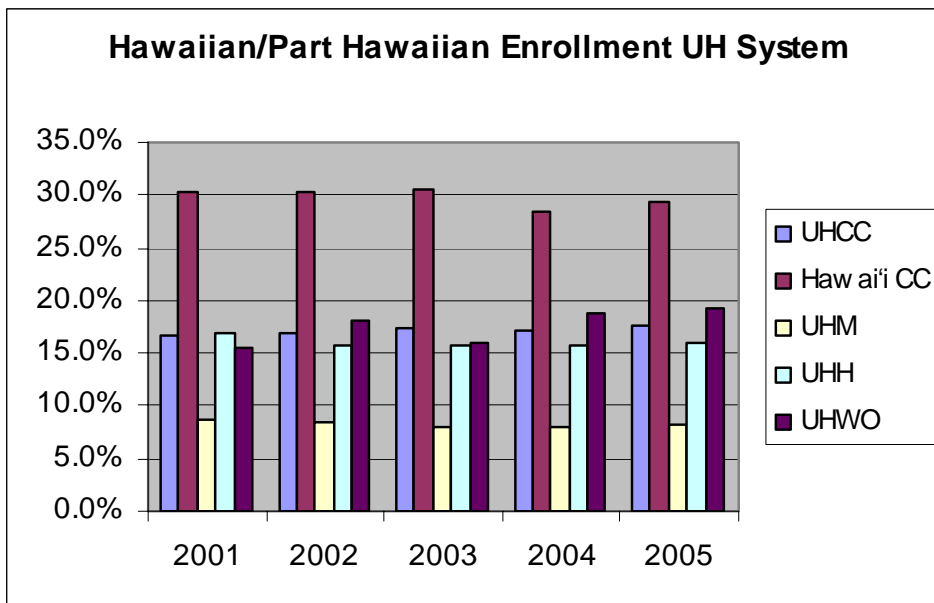
Source: MAPS Fall Enrollment Report UHCC, Appendix B1 Selected Characteristics of Credit Students

- 2348 enrolled in certificate and degree programs
- 4429 short-term training programs
- 6777 total people served

Source: ODS, HawCC OCET Office

## Our Hawaiian Population

Hawaii Community College is a leader in meeting Strategic Planning goals for Hawaiian and Part-Hawaiian participation in undergraduate education. The percentage of Hawaiian and Part-Hawaiian students enrolled at Hawaii Community College exceeds the UH system undergraduate levels as well as the levels for the other community colleges.



Source: MAPS UH IRO Fall Enrollment Reports U of H: Community Colleges, Manoa, Hilo, West Oahu, Fall 2005

## **Challenges**

As the only publicly supported, open door community college on Hawaii Island, the College seeks to serve the entire island through distributed sites and the use of technology. Some of the special challenges we face are:

- Broad Geographic Reach
- Outdated facilities on upper and lower campus
- Insufficient administrative infrastructure and resources to support rapid growth in the overall college

## **Advantages**

The advantages that Hawaii Community College has are found in its people and the environment.

- Outstanding team of faculty and staff
- Excellent support from the community
- Good relationships with other campuses within the UH system
- Abundance of natural resources
- Fastest growing county in the State

## **Management Goals and Objectives**

### **Goal 1: Create an Identity**

#### **Objectives:**

- Build 2 new campuses, one in Hilo and the other in West Hawaii
- Employ a market study to determine public relations strategy to better position Hawaii Community College in the eyes of its many audiences

### **Goal 2: Bring in Additional Resources**

#### **Objectives:**

- Create partnerships with private entities to leverage funding for the college's growth
- Increase State and Federal funding
- Collaborate with UH Foundation to increase discretionary "Giving" to the college

### **Goal 3: Improve Morale**

#### **Objectives:**

- Maintain an administrative style characterized by transparency, openness and inclusiveness
- Encourage faculty, staff and students to participate in college and community activities
- Encourage an appreciation of our diversity through cultural transformation initiatives

To assist us in bringing our goals and objectives to life, we will begin by responding to system biennium budget considerations. These considerations are:

1. How can your campus better meet State needs?
  - Provide students the opportunity to gain knowledge and skills leading to broader career options
  - Hawaii Community College continues to contribute to a diversified economy
    - Create an entrepreneurship program
    - Expand current IT capabilities on campus
  - Review its programs, to evaluate opportunities based on the needs of the community workforce pipeline, and continually adjust its program offerings to keep current with need
    - Program expansion: Nursing, Forest TEAM and Early Childhood Education
    - New areas of investment: Substance Abuse Counseling, Hawaiian Lifestyles- Hula, Mahi'ai, Lawai'a Tracks, Digital Media Arts, and the Construction Academy
  
2. How can your campus increase student participation?
  - Quickly adapting its program offerings to meet the community's workforce needs.
  - Provide a location/campus that is more conducive to learning and teaching.
  - Increase island-wide access that brings higher education within the reach of every resident of Hawaii Island
    - A network of specially equipped video conferencing classrooms in Hilo, Ka'u, Waimea, and Kona were pioneered through a federally funded Title III Native Hawaiian Grant to meet the ever growing need and demand.
    - Through the Office of Continuing Education & Training, a variety of non-credit offerings will continue to be offered throughout Hawaii Island
    - Associate, Bachelor, Master, and Graduate Certificate offerings at UHCWH
  - Expansion of existing programs and services
    - Job placement services
    - Increase student employment positions
    - Online Student Services

3. How can your campus increase student success?
  - Ensure Student Learning Outcomes are achieved
  - Development of an enrollment management system
  - Increase counseling services
  - Offer additional tutorial services
  - Increase number of internship opportunities
  - Improve teacher pedagogy
  
4. How will you know you have succeeded?
  - Increase number of student job placements
  - Increased number of certificates and degrees awarded
  - Positive Student/Employer Satisfaction Survey results
  - Higher graduation, transfer and persistence rates
  - Increased number of applications for college admittance
  - Evaluation of Student Learning Outcomes through Capstone projects
  - Increased support from the community
  - Increase the percentage of students advancing from developmental remedial courses into meeting entry level program requirements.
  
5. How will you fund new initiatives?
  - Internal reallocation of current resources
  - Seek additional resources:
    - public/private partnerships
    - public funding (Federal and State)
    - private grants
    - fundraising

## **Biennium Budget Request**

### **Capital Improvement Project**

- Funding shortfall for development and construction of new campuses
  - Funding amount of shortfall, subject to completion of Phase I from development contract, timeline 6 months or less

### **Operating Requests**

- Administrative Affairs Support - To provide necessary personnel and business office support to all the departments of the campus
  - (1.00) Personnel Officer
  - (1.00) Personnel Clerk
  - (1.00) Budget Specialist
  - (1.00) Administrative Officer
  - (2.00) Account Clerks
  - Staff Training and Development
- University of Hawaii Center at West Hawaii Operations - To provide clerical support for the instructional and administrative staff required at the Center
  - (1.00) Clerk Typist
- Computing & Media Support Services Department - To create a new department to support computing and media needs of the campus
  - (1.00) Director
  - (1.00) IT Coordinator
  - (1.00) DE Media Coordinator
  - (1.00) Ed Specialist
  - (2.00) Server Technicians
  - (2.00) Computer Technicians
  - (3.00) Media Technicians
  - (1.00) Network Technician
  - (1.00) Webmaster
  - (1.00) Secretary
- Student Services Infrastructure - To provide for basic student support services for Financial Aid, Admissions and Advising
  - (6.00) Student Support Specialists
  - (6.00) Faculty
  - (3.00) Clerk Typists

- Intensive English Program - To provide permanent positions for the program
  - (2.00) Faculty
- Hawaiian Lifestyles Program Support - Institutionalize faculty and staff currently supported by Federal DOE funds
  - (2.00) Faculty
  - (3.00) Ed Specialists
- Early Childhood Education Program - Increase the number of faculty and staff to support program expansion
  - (1.00) Ed Specialist/Teacher
  - (1.00) Faculty
- Forest TEAM Program - Expand program to West Hawaii
  - (.50) Faculty
- Library/Academic Support Services - To provide for placement and distance education needs
  - (1.00) Librarian
  - (1.00) Ed Specialist
  - (1.00) Library Technician
- Nursing Program Support - To increase enrollment and upgrade facilities
  - (2.00) Faculty, 2008- for West Hawaii and 2009- for East Hawaii
- Marketing Plan - To hire a consultant to develop a college wide marketing plan
  - (1.00) Specialist
- Recruitment - To provide basic recruiting services to the College
  - (1.00) Faculty
  - (1.00) Clerk Typist

**Closing**

The College motto, “E ‘Imi Pono...to seek excellence,” is reinforced by a recent national benchmark survey, the Community College Survey of Student Engagement, commending Hawaii Community College faculty for high performance in two critical benchmark areas for student involvement: Academic Challenge and Active and Collaborative Learning.

It is often said that colleges are instruments of reflection and change. Hawaii Community College truly represents this to our community as we act as a “bridge” to provide our students with access to higher educational opportunities and workforce training. We are honored to serve the people of Hawaii Island.