



Wireless at UH

For the Macintosh

Author: Teresa Sakata

Introduction.....	1
Configuring TCP/IP	1
Connecting to the UH Wireless network.....	2
Information and Control Console (ICC) window	3
Macintosh PowerBooks that do not have a built-in AirPort card	4
Installing AirPort software	4
Getting Help	4

Introduction

This document will show you how to connect to the UH Wireless network. For current areas of coverage, please visit

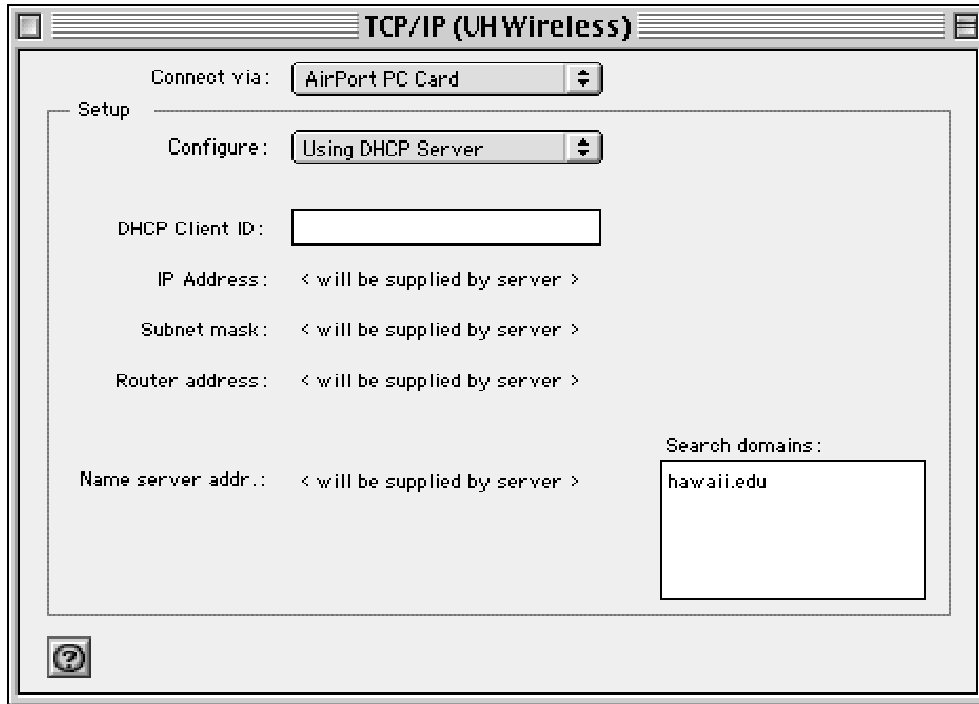
www.hawaii.edu/wireless/wireless.gif

When using the UH Wireless network, the recommended web browser is Internet Explorer.

Configuring TCP/IP

1. Go to the **Apple** menu and select **Control Panels**, then select **TCP/IP**
2. Go to the **File** menu and select **Configurations**. Highlight **Default** and click on **Duplicate**. In the box that appears, type **UH Wireless** and click **OK**. Click on **Make Active**.
3. Under "Connect via:" select **AirPort PC Card** (it might just say **AirPort**)
Under "Configure" select **Using DHCP server**
If necessary, in the "Name server addr: box type **128.171.3.13**
128.171.1.1
In the "Search domains" box type **hawaii.edu**

When you are done the window should look like this:



Close the window. When you are asked if you want to save the changes, click **Save**.

Note: When you go back to your normal location (home, office) be sure to go back to the TCP/IP control panel and change the configuration back to **Default**. If you want to use the UH Wireless network again, change the configuration back to **UH Wireless**.

Connecting to the UH Wireless network

1. Point and hold down the mouse button on the AirPort symbol on the control strip. The AirPort symbol looks like this:



2. A menu will pop up. Select **Other...** A window will appear asking for the name and password of the network. Fill in the network name and password and click **OK**. If you do not know the network name and password, you will have to go to the following web page to find out:

www.hawaii.edu/wireless/validate.html

You will need to do this from a machine with a working network connection, such as the Keller lobby express terminals, the PC Lab (Keller 213), the CLIC Lab (Sinclair Library), or the Macintosh Lab (Keller 204).

If you do not see a choice for Other... in the menu, select **Open AirPort** instead. In the window that appears, check the box next to **Allow selection of closed networks**. Close the AirPort window. You should now have an Other... choice in your AirPort control strip.

3. Open a web browser and go to any web page. (Note: Internet Explorer is the preferred browser when connecting to the UH wireless network.) You will be automatically directed to an authentication page. In the Username box, type in your **ITS username**. In the Password box, type your **password**. Click **Login**.

Please enter your ITS/UHUNIX username and password: _____

Username:

Password:

4. The authentication process will begin. When it is done, if you are using Internet Explorer, the “Information and Control Console” (ICC) window should appear and you will be taken to the web page you went to in step 3.

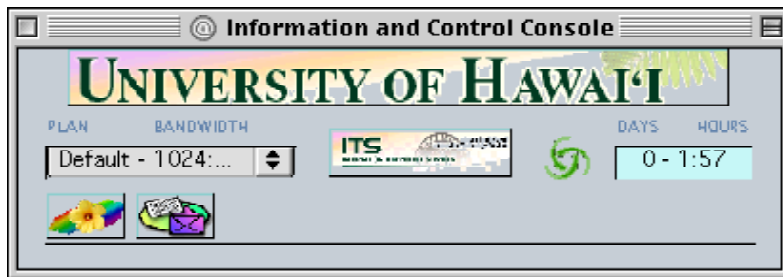
If you are using Netscape, you may receive an error message such as “Sorry, we cannot load the Information and Control Console” and a message about your JavaScript version. However, you may simply click on **OK** to continue and your connection will still work.

You will now be connected to the UH Wireless network and can proceed to browse the web or check your email as you normally would.

Information and Control Console (ICC) window

The ICC window will tell you how much time you have left before you will need to re-enter your name and password. Please leave this window open.

The ICC window looks like this:



- Clicking on the large “University of Hawai‘i” box will take you to the UH News Releases web page
- Clicking on the “ITS” box will take you to the ITS Help Desk web page
- Clicking on the flower will take you to the University of Hawai‘i home page
- Clicking on the envelope icon will take you to the UH Webmail home page
- Clicking on the “green swirl” icon will take you to the Nomadix, Inc. home page
- The “Day/Hours” box lets you know how much time you have left before you will have to re-authenticate your connection.

Macintosh PowerBooks that do not have a built-in AirPort card

ITS recommends at least MacOS 9.0.4 and an Orinoco Wavelan card (the Gold card was tested) if you would like to use a Macintosh laptop with the UH wireless network. The software to use the Orinoco card is built into the Macintosh operating system.

If your AirPort software is already installed, your wireless card will show up on your Macintosh's desktop as "AirPort PC card". If you see "IEEE/Wavelan card" instead, this means the software is not installed.

Installing AirPort software

1. Download the AirPort software from
<ftp://ftp.hawaii.edu/pub/dss/mac/airport131.hqx>
2. When the download is finished, you should have an icon called **AirPort 1.3.1.smi** on your desktop or wherever on your Mac that you saved the file in step 1. Double click on this icon.
3. There will now be an AirPort window on your screen. Double click on the **Apple SW Install** icon.
4. Click **Continue**.
5. Make sure the correct hard drive is selected (do not select your OS X drive if you have one) and click on **Select**.
6. The license agreement will appear. If you agree with its terms, click on **Continue**, then click on **Agree**.
7. The ReadMe will appear. Click on **Continue**.
8. On the following screen, click on **Start**. The AirPort software will now be installed on your laptop. When the install is done, restart your Macintosh if prompted to do so.

Once you have the AirPort software installed, you may proceed to connect to the UH Wireless by using the directions from the beginning of this document.

Getting Help

For more information about wireless at UH, please visit

www.hawaii.edu/wireless

For additional assistance, please phone the ITS Help Desk at (808) 956-8883, send e-mail to **help@hawaii.edu**, or fax (808) 956-2108.

Or see the ITS Helpdesk home page at **www.hawaii.edu/help**
The ITS Help Desk is located in Keller 105 on the UH Mānoa Campus.

The University of Hawai'i is an equal opportunity/affirmative action institution.