

# EARLY COLLEGE UPDATE

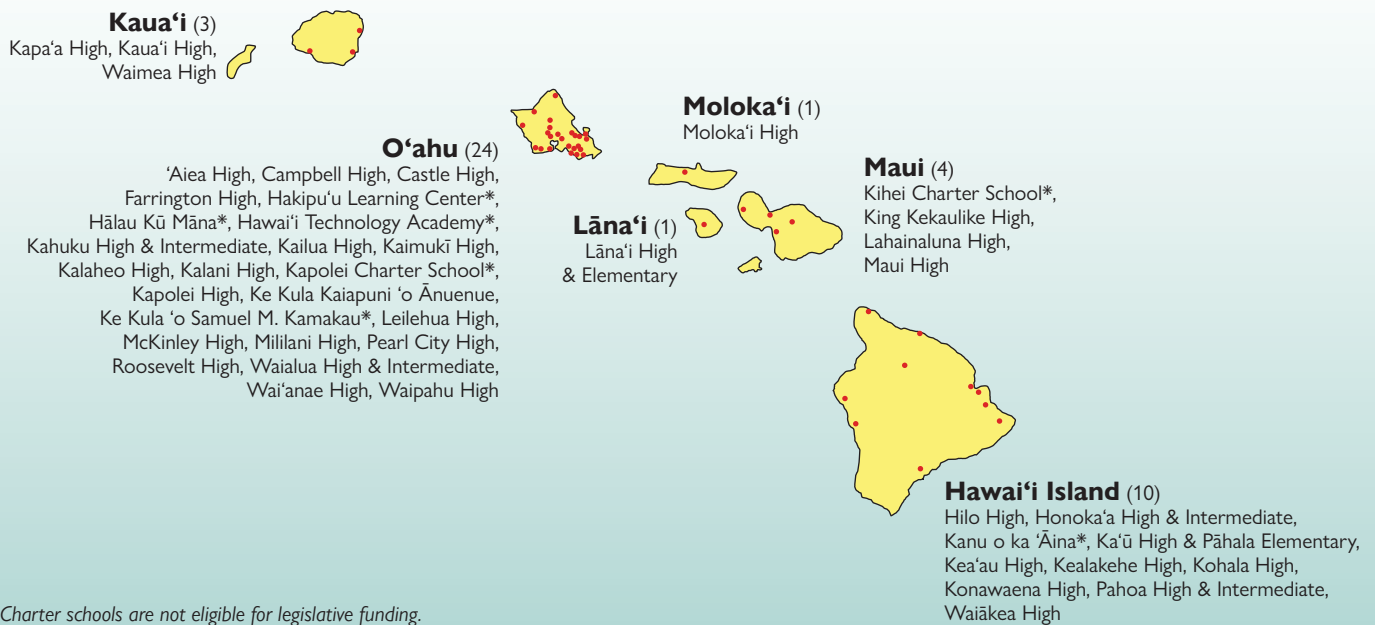
## JANUARY 2021

Early College is a successful collaboration between the Hawai'i Department of Education (HIDOE) and University of Hawai'i (UH) System that aligns and strengthens the educational pipeline between secondary and postsecondary education, and increases the college, career, and community readiness of Hawai'i students. Through the program, students in grades 9-12 have the opportunity to enroll in "sheltered" college courses and earn high school and college credits (dual credit) upon successful course completion.

### **DRAMATIC GROWTH, WIDESPREAD REACH**

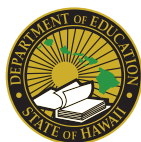
Early College programs in Hawai'i have grown from four high schools partnering with three UH campuses in school year (SY) 2012-13 to 43 high schools partnering with 10 UH campuses in SY 2020-21. Since Fall 2012, **13,308 students have participated in the Early College program statewide.** Despite challenges posed by the COVID-19 pandemic, 2,100 students participated in Early College during the Fall 2020 term.

**During SY 2020-21, 43 public schools will be offering Early College classes. HIDOE's legislative funding is supporting Early College classes at 36 high schools.**

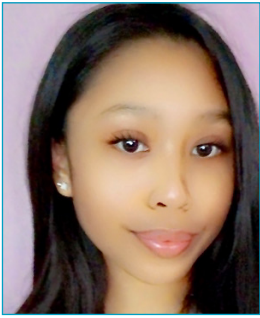


### **Mahina Anguay, Principal, Waimea HS**

*"Offering students the opportunity to take free college courses has completely changed the culture of our rural, Title 1, neighbor island school. We've seen increased demand for Early College courses with incoming freshmen now asking how they can maximize the credits they graduate with. Students are seeing college as a real possibility now. **They understand that a global pandemic means a whole new skill set will be necessary to be successful, and they don't want to be left behind.**"*



UNIVERSITY  
of HAWAII  
SYSTEM



### Michelle Cabanting, Waiākea High School

Michelle is a junior at Waiākea High School who has earned 15 college credits.

*“Early College has helped me **gain new skills and given me the opportunity to prepare myself for college.** Early College classes have shaped me into a better student by promoting a lot of reflection that made me think about my life more, pushed me to work on myself and obtain healthier habits.”*

## AN INVESTMENT IN THE STATE OF HAWAI‘I

Continued support for the Early College program is vital to promoting a college-going culture in the state and increasing career readiness. National and local data has consistently shown a strong correlation between participation in dual credit programs – like Early College – and college enrollment, persistence, and completion, particularly for students who are underrepresented in higher education. For the Class of 2019, Hawai‘i high school graduates who earned dual credit enrolled in college at a rate of 78%, which was significantly higher than the college enrollment rate of 48% for high school graduates who did not participate in dual credit.

### David Lassner, President, University of Hawai‘i System

*“A college credential is one of the best paths to intergenerational economic and social improvement. Early College has proven to be one of the most effective strategies we have found to get more students into and through college and on the way to better lives. **The impact is especially notable when we look at groups that have traditionally under-enrolled and graduated at lower rates, such as economically-disadvantaged and Native Hawaiian students.**”*



Funding provided by the Hawai‘i State Legislature has been essential in scaling and sustaining Early College programs across the state. Between FY18 and FY20, legislative funding has been used to support approximately 851 Early College classes at 38 HIDOE schools. Legislative funding has empowered more high schools to create and develop their Early College programs, offer more Early College classes, expand into rural and remote areas of the state, and **allow more students to participate in rigorous academic experiences without financial burden to families.**



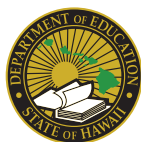
### Leanne Villanueva, Early College Outreach Coordinator, Waipahu HS

Leanne earned an Associate Degree from Leeward Community College prior to graduating from Waipahu High School in 2018 as a result of her Early College participation. She subsequently earned a Bachelor’s Degree from UH West O‘ahu in 2020.

*“As an immigrant and a lower-income youth, Early College accelerated my learning opportunities, allowing me to graduate with a two-year college degree before finishing high school at no cost, making me the first in my family to graduate from college. My experiences honed my leadership skills, values, and passion for serving our first-generation college students, which guides me in my current position. **Early College reinforces the notion that when students are given extraordinary challenge, they can reach their full potential.**”*

To learn more about Early College in Hawai‘i and access additional testimonials and program data, please visit: [www.hawaii.edu/dualcredit/early-college](http://www.hawaii.edu/dualcredit/early-college).

Please contact Wendi Vincent ([wendi.vincent@k12.hi.us](mailto:wendi.vincent@k12.hi.us)) and Nicole Atwood ([nicolesw@hawaii.edu](mailto:nicolesw@hawaii.edu)) with any questions.



UNIVERSITY  
of HAWAI‘I  
SYSTEM