

Hawai'i's University for Today and Tomorrow

Ko'olaha

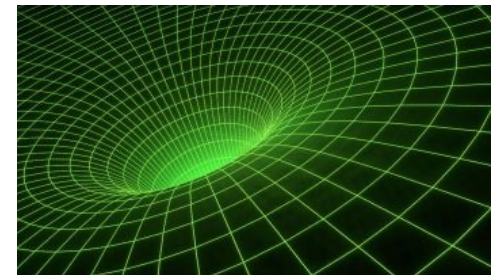
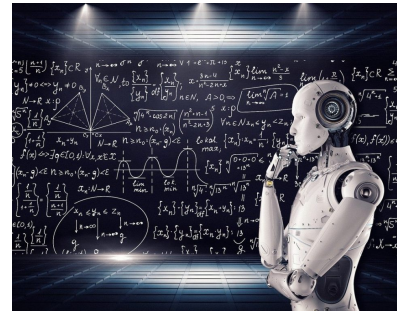
ka 'Āhaka Nā Leo Nālani Manu Ne




Welcome!

University of Hawai'i

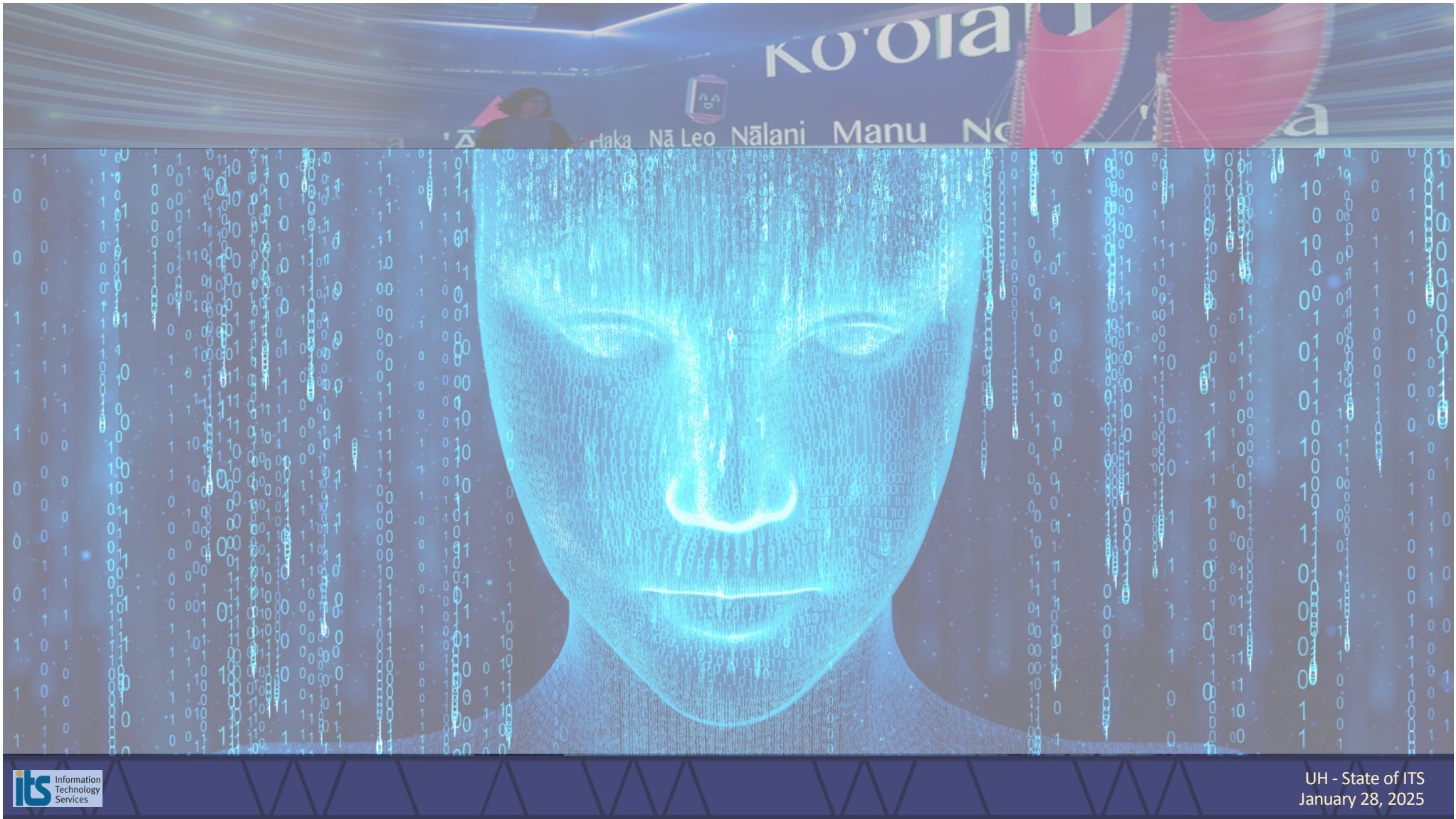
State of ITS 2025

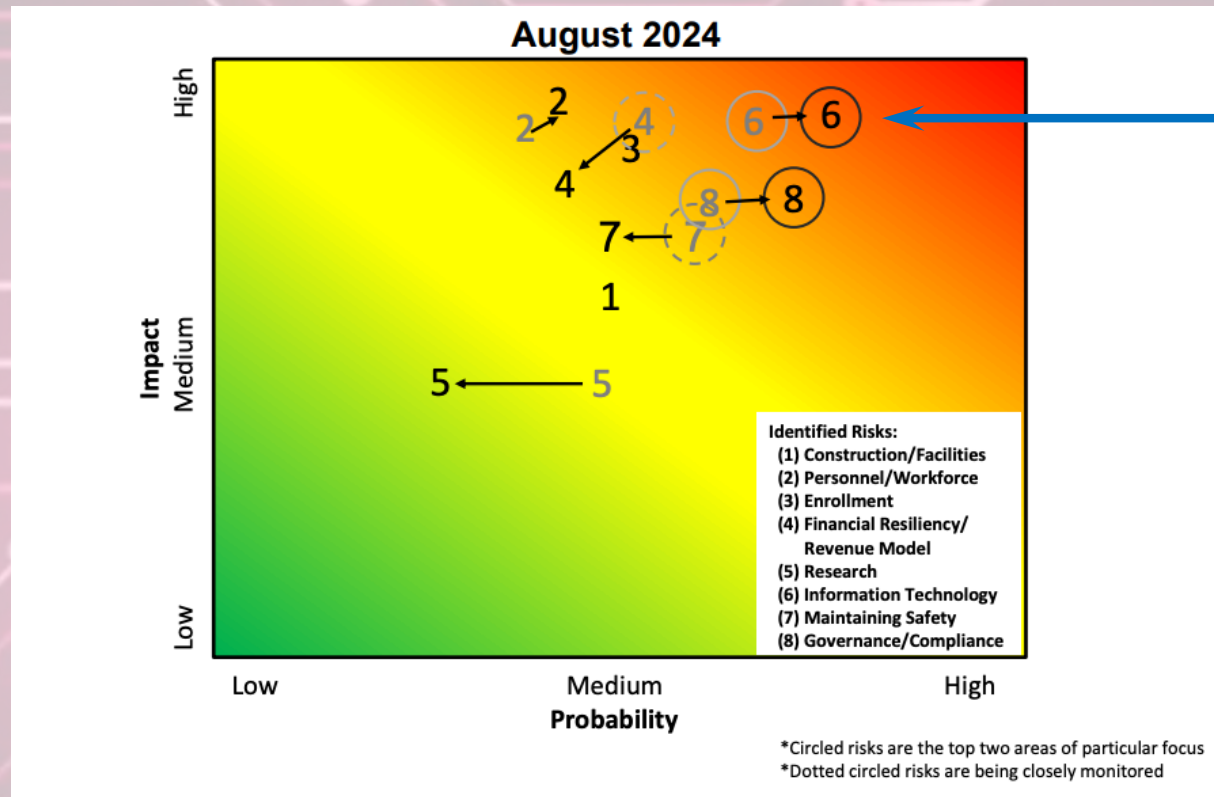




2025 State-of-ITS Agenda

- 10:00am Welcome & Webinar Logistics
- 10:05am State of ITS 2025
Garret Yoshimi, VP for IT & CIO
- 10:30am Updates to Technology Strategy - DISCUSSION
- 10:40am Open Q&A
- 10:50am Wrap-Up and Closing





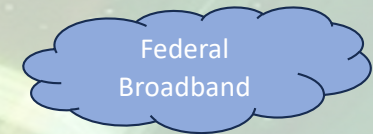
2024 – Looking Back

- Focus + Value + Alignment
- Invest in Talent – INTERNAL + ENTRY LEVEL + STATEWIDE POOL (Remember Succession Planning!)
- Mission Critical 2024 NEW Projects
 - LMS – It's Time!
 - Baselining Banner, Migration for KFS and ODS
 - Expanding Research Engagement
 - Working with the “new” Google
 - Infrastructure Mixed Private Cloud
 - Institutional AI – Building Talent and Resource Pool
 - Security-Security-Security + Compliance
- AND, Continuing to Keep the Lights On + Our SECOND Decade @ ITC

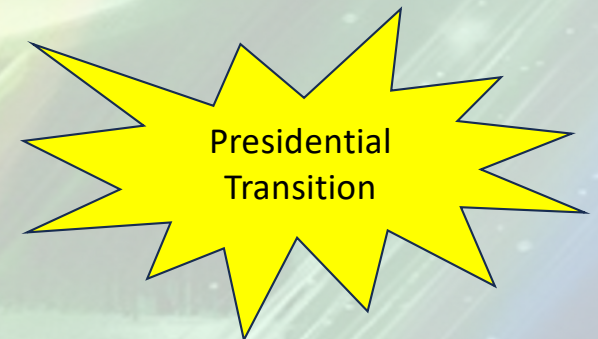
Federal
Broadband

Presidential
Transition

2024 – Looking Back



EWIDE POOL



ND Decade @ ITC

2024 – Looking Back

- Focus + Value + Alignment
- Invest in Talent – INTERNAL + ENTRY LEVEL + STATEWIDE POOL (Remember Succession Planning!)
- Mission Critical 2024 NEW Projects
 - LMS – It's Time!
 - Baseline Banner, Migration for KFS and ODS
 - Expanding Research Engagement
 - Working with the “new” Google
 - Infrastructure Mixed Private Cloud
 - Institutional AI – Building Talent and Resource Pool
 - Security-Security-Security + Compliance
- AND, Continuing to Keep the Lights On + Our SECOND Decade @ ITC

Federal
Broadband

Presidential
Transition

2025 – Doubling Down

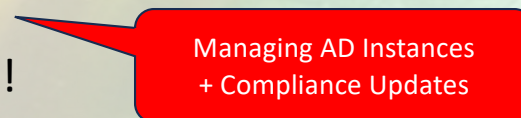
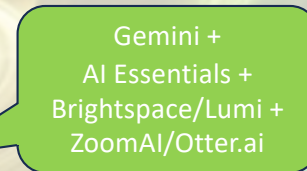
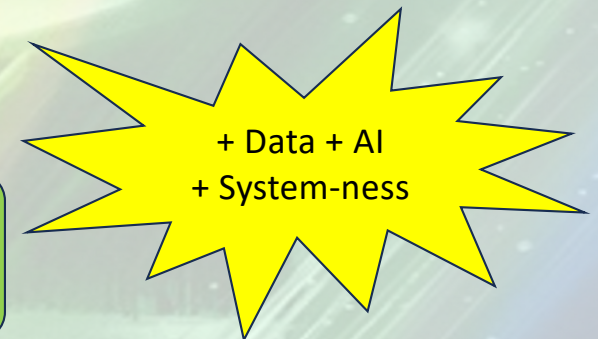
- Focus + Value + Alignment – Update Technology Strategy
- Invest in Talent – Succession Planning!
- Mission Critical 2025 Projects
 - LMS – MID-Flight!
 - Baseline Banner, Migration for KFS and ODS
 - Expanding Research Engagement
 - Working with the “new” Google
 - Infrastructure Mixed Private Cloud
 - Institutional AI – Tools and Training
 - Security-Security-Security + Compliance
- AND, Continuing to Keep the Lights On!

Federal
Broadband

+ Data + AI
+ System-ness

2025 – Doubling Down

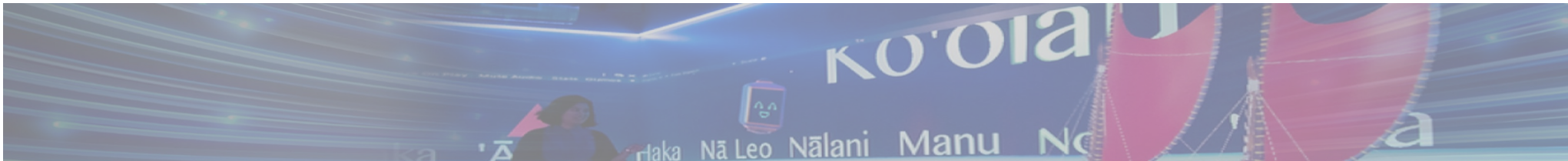
- Focus + Value + Alignment – Update Technology Strategy
- Invest in Talent – Succession Planning!
- Mission Critical 2025 Projects
 - LMS – MID-Flight!
 - Baselining Banner, Migration for KFS and ODS
 - Expanding Research Engagement
 - Working with the “new” Google
 - Infrastructure Mixed Private Cloud
 - Institutional AI – Tools and Training
 - Security-Security-Security + Compliance
- AND, Continuing to Keep the Lights On!





Open Forum – Q&A

Drop questions in the Q&A box
We'll try to keep up!



Thank you for attending!
Feedback and comments to *itwkschop@hawaii.edu*