



UNIVERSITY of HAWAII®  
MĀNOA  
*Kennedy Theatre*

Department of Theatre and Dance  
University of Hawai'i at Mānoa  
1770 East-West Road  
Honolulu, HI 96822  
Website: [www.hawaii.edu/kennedy](http://www.hawaii.edu/kennedy)  
Online press resources: [www.hawaii.edu/kennedy](http://www.hawaii.edu/kennedy)

Contact: Matthew Kelty  
Publicity Director  
Office Phone: (808) 956-2598  
Fax: (808) 956-4234  
Box Office: (808) 956-7655  
email: [ktpub@hawaii.edu](mailto:ktpub@hawaii.edu)

## Media Release • 2012-2013 Season

FOR IMMEDIATE RELEASE

JANUARY 24, 2013

**Late Night Theatre Kicks Off Spring Season with “Danny and the Deep Blue Sea”**  
*Production Marks Director’s Debut*

University of Hawai‘i at Mānoa’s Late Night Theatre will present “Danny and the Deep Blue Sea,” by award-winning playwright John Patrick Shanley, as its first production of the Spring semester. This journey into the lives of two individuals, Roberta and Danny, explores what happens when someone completely broken, violent, or scarred is given the ability to speak. The play will be performed at 11 p.m. on Feb. 8, 9, 15, and 16 at Kennedy Theatre’s Earle Ernst Lab space. Due to some violent and sexual content, the show is recommended for mature audiences.

Undergraduate theatre major Lavour Addison (seen this semester in UHM’s productions of “Handler” and “Sonnets for an Old Century”) makes his directing debut with “Danny and the Deep Blue Sea.” “I chose this play because it showcases the strength of humanity overcoming circumstance,” he says, adding that it challenges the actors to work on showing both range and emotional vulnerability. The play asks whether these two people – who are finally articulating their hopes and fears – will be able to move on from their past and step into a brighter future, or will be forever be consumed by devils they’re unable to escape.

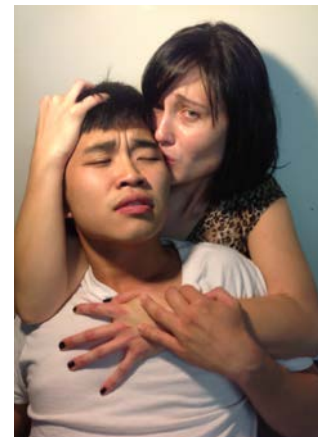
Kaitlin Souza (most recently seen as Sister Alice in “Handler”) and newcomer Leon Sheen are challenged with taking on these two complex characters. They meet by happenstance one night in a Bronx, NY bar, while grappling with their individual demons; as they begin to learn about one another, they also begin to learn about themselves. Shanley has described the play as a “dance of passion” which incorporates images of physical violence while still remaining incredibly beautiful and powerful.

Addison has faith that his actors can bring this moving, emotionally dangerous story to life. “Kaitlin and Leon have a special chemistry that ignited in the initial audition and kept my attention,” says Addison. “They have strong work ethics and emotional depth that really bring these characters to life. Throughout the performance, the audience should laugh, cry, struggle, dream — and, perhaps, put up a fight.”

Tickets for “Danny and the Deep Blue Sea” will go on sale at the box office one hour before show time each night. Prices are \$10 for general admission; \$8 for UH faculty and staff, seniors, military, and non-UHM students; and \$5 for UH - Mānoa students with a validated Spring 2013 UHM photo ID. Latecomers will not be admitted once the performance has begun. For more information, please visit [hawaii.edu/kennedy](http://hawaii.edu/kennedy) or call the theatre at (808) 956-7655. For disability access, please call the theatre.

---

**EVENT:** “Danny and the Deep Blue Sea”  
**PRESENTED BY:** UHM Department of Theatre and Dance  
**WHEN:** Feb. 8, 9, 15, and 16 at 11 p.m.  
**WHERE:** UHM’s Earle Ernst Lab Theatre  
1770 East-West Road, Honolulu  
**TICKET PRICES:** \$10 general admission  
\$8 seniors / military / UH Faculty and staff / non-UHM students  
\$5 UHM students with validated Spring 2013 UHM photo ID  
**PURCHASE INFO:** Tickets will go on sale at the Kennedy Theatre box office one hour before show time each night.



###