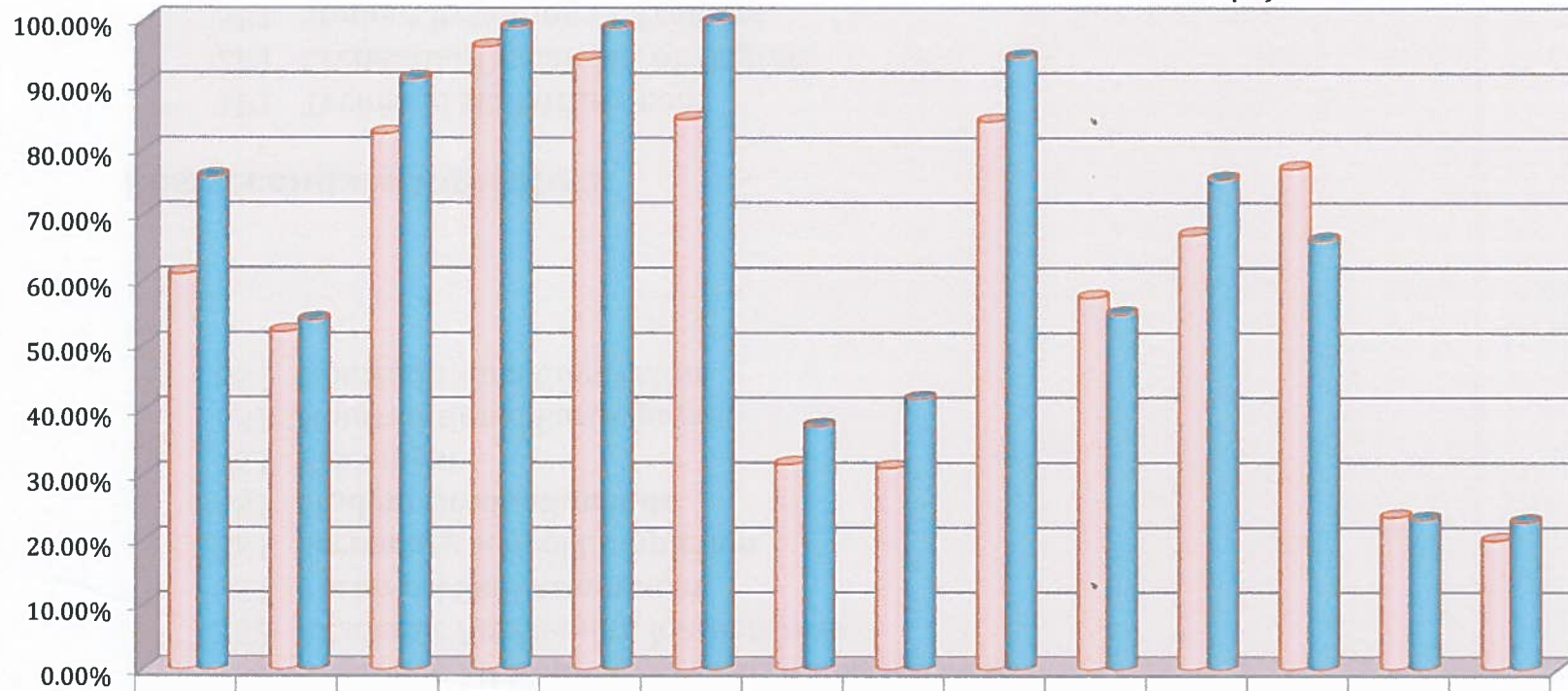


Performance Comparison: National Average Performance versus Hawaii's Performance, for PY 2015-2016

National Hawaii

Note: National Average excludes Hawaii's performance



National	61.03%	52.16%	82.58%	95.98%	94.01%	84.80%	31.78%	31.19%	84.49%	57.39%	66.99%	77.17%	23.59%	19.96%
Hawaii	75.91%	53.95%	91.02%	99.05%	98.89%	100.00%	37.64%	41.83%	94.41%	54.84%	75.55%	66.19%	23.25%	22.84%

Secondary Indicators

- 1S1 Academic Attainment: Reading/Language Arts
- 1S2 Academic Attainment: Mathematics
- 2S1 Technical Skill Attainment
- 3S1 Secondary School Completion
- 4S1 Student Graduation Rate
- 5S1 Placement
- 6S1 Nontraditional Participation
- 6S2 Nontraditional Completion

Postsecondary Indicators

- 1P1 Technical Skill Attainment
- 2P1 Credential, Certificate, or Degree
- 3P1 Student Retention or Transfer
- 4P1 Student Placement
- 5P1 Nontraditional Participation
- 6P2 Nontraditional Completion