

NOTICE OF
STATE BOARD FOR CAREER AND TECHNICAL EDUCATION MEETING

Date: Thursday, November 15, 2018
Time: 9:30 a.m.
Place: Honolulu Community College
Norman W.H. Loui Conference Center
Building 2, Room 201
874 Dillingham Blvd.
Honolulu, Hawai'i 96817

AGENDA

- I. Call Meeting to Order**
- II. Approval of Minutes of June 7, 2018 Meeting**
- III. Public Comment Period:** All written testimony on agenda items received after posting of this agenda and up to 24 hours in advance of the meeting will be distributed to the board. Late testimony on agenda items will be distributed to the board within 24 hours of receipt. Written testimony may be submitted via US mail, email at bor@hawaii.edu, or facsimile at 956-5156. Individuals submitting written testimony are not automatically signed up for oral testimony. Registration for oral testimony on agenda items will be provided at the meeting location 15 minutes prior to the meeting and closed once the meeting begins. Oral testimony is limited to three (3) minutes. All written testimony submitted are public documents. Therefore, any testimony that is submitted verbally or in writing, electronically or in person, for use in the public meeting process is public information and will be posted on the board's website.
- IV. Agenda Items**
 - A. For Information
 1. University of Hawai'i HINET – The Washington State Model Reducing Living and Education Costs for Career Pathway Students
- V. Adjournment**

Item IV.A.1.

UH HINET – The
Washington State Model
Reducing Living & Education
Costs for Career Pathway
Students

MATERIALS



Basic Food Employment & Training

Board of Regents – University of Hawaii System

Dr. Erin Frasier & Jennifer Dellinger

Workforce Education, WA SBCTC

Nov. 15, 2018



**COMMUNITY AND
TECHNICAL COLLEGES**

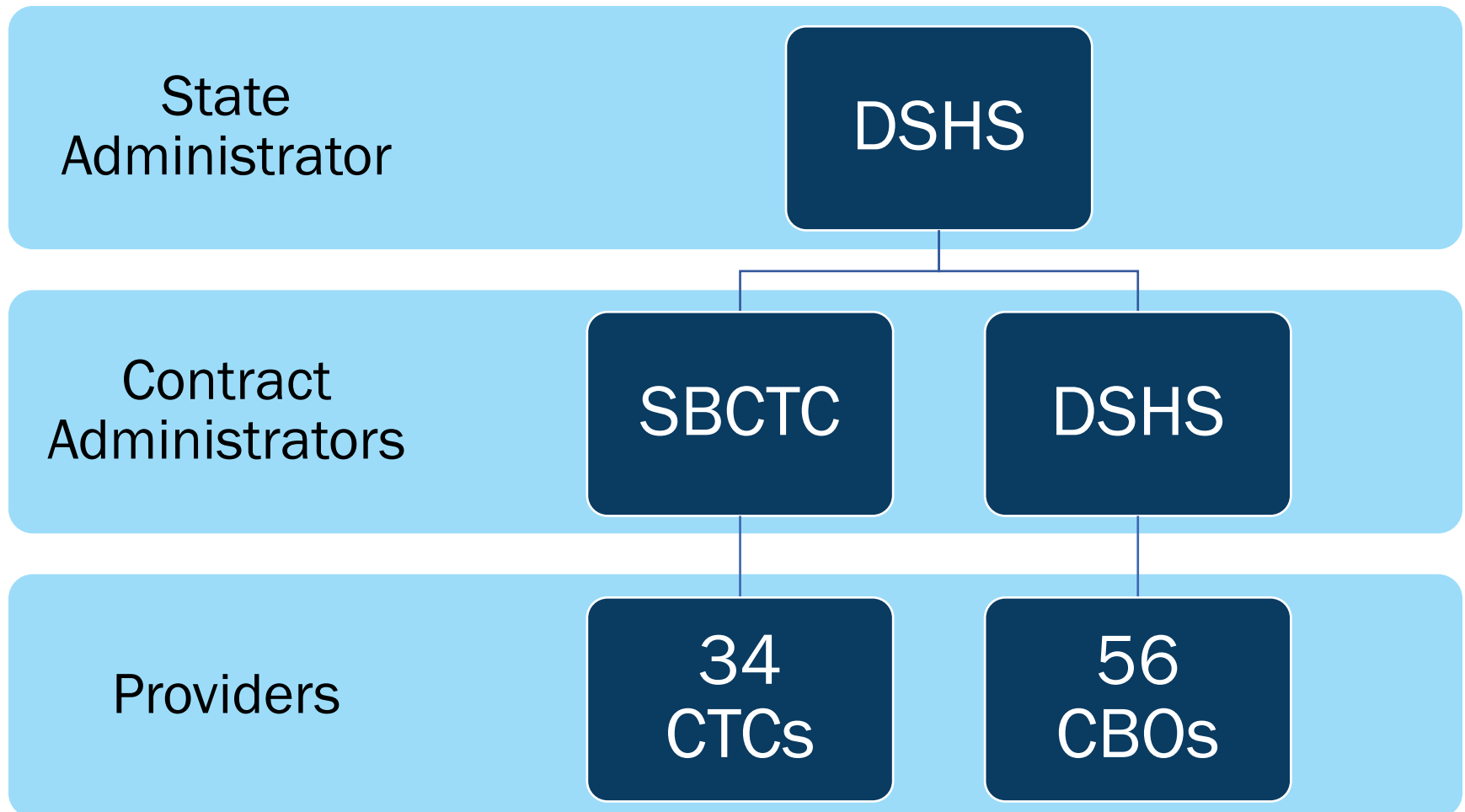
Washington State Board

Basic Food Employment & Training: Guiding Intent

- Provide education and training...
- to basic food recipients, ...
- preparing them for sustainable employment and economic self-sufficiency.



SNAP E&T in Washington



Community Impact

89,448

- Individuals served

\$40 million

- Federal Funds to CBOs & Community/Technical Colleges

60%

- Employment rate

\$14.44

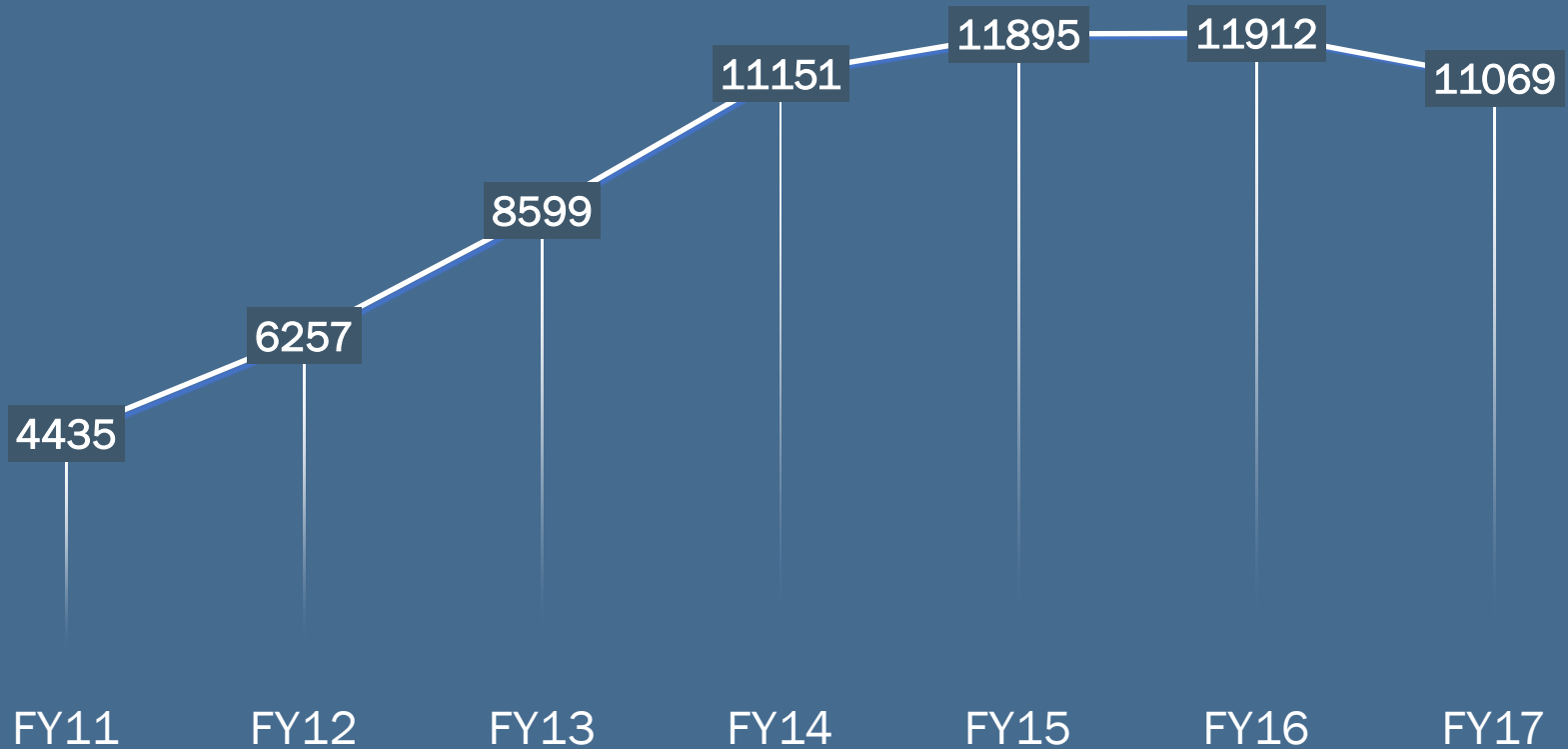
- Median hourly wage

Community & Technical College Impact

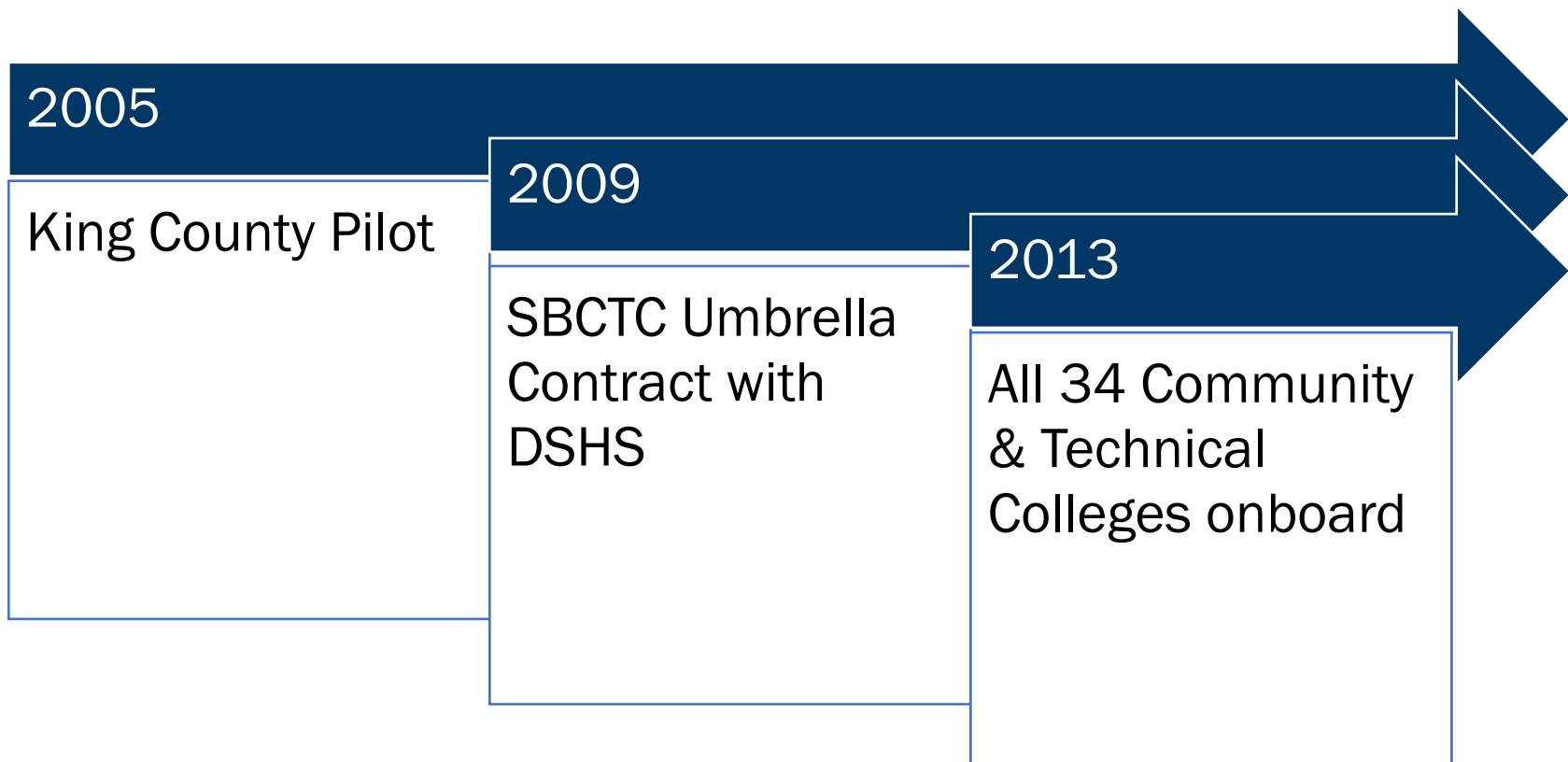
- Completion, retention, degrees
 - Percent at Exit of Completion
 - 45 Credits or more – 18%
 - Certificate of Completion – 16%
 - Degree Completion – 24%
- Employment outcomes, stats, wages
 - 75% employment after completion*
 - Median Wages By Completion
 - 45 Credits or more - \$16.13
 - Certificate of Completion - \$16.14
 - Degree Completion - \$17.20

Students Served

BFET STUDENT HEADCOUNT



History of WA College SNAP E&T



State Board & College Roles

State Board

- Contract Management
- Compliance
- Fiscal Management
- Grant Management
- Program Policy

Colleges

- Program Administration
- Direct Services
- Program Procedures & Local Policy

Allowable Educational Programs

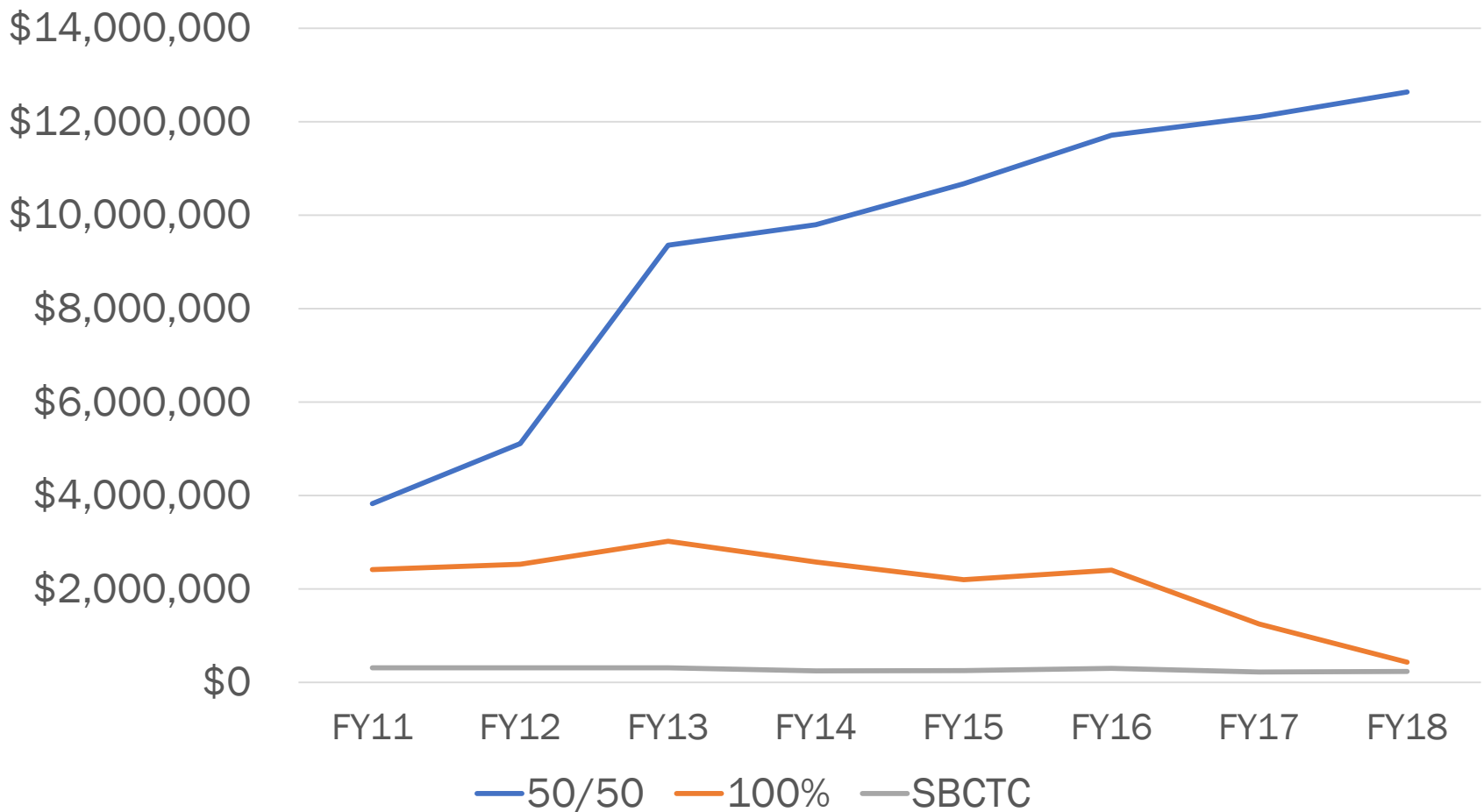
Prof-Tech Programs

- Perkins Approved
- Short-term Certificates
- 2-year Degrees

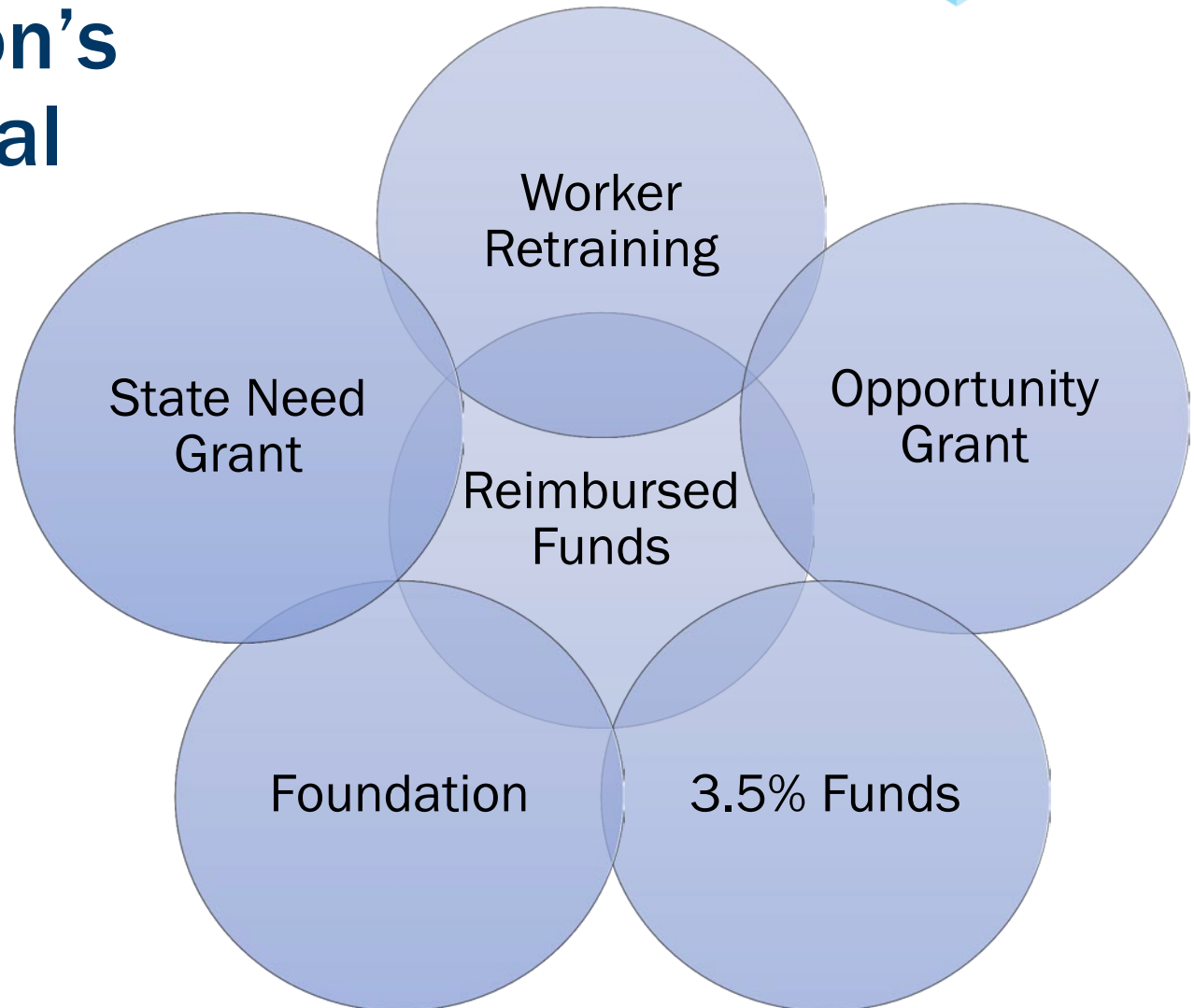
Basic Education for Adults

- High School Completion
- High School Equivalency
- English Language Acquisition (formerly ESL)

College & SBCTC SNAP E&T Funding



Washington's Non-Federal Fund Sources



Policy and Program Keys

- 50/50 Funds
 - Requires 100% non-federal expenditures – secure resources
- 100% Funds
 - Asset for starting a program but not sustaining
- Reimbursed Funds Policy
 - Ensure program sustainability and growth
- Student Recruitment
 - Reverse referral model
 - Connecting existing students to food assistance
- College Investment
 - Commitment to workforce development role for the college



Questions?

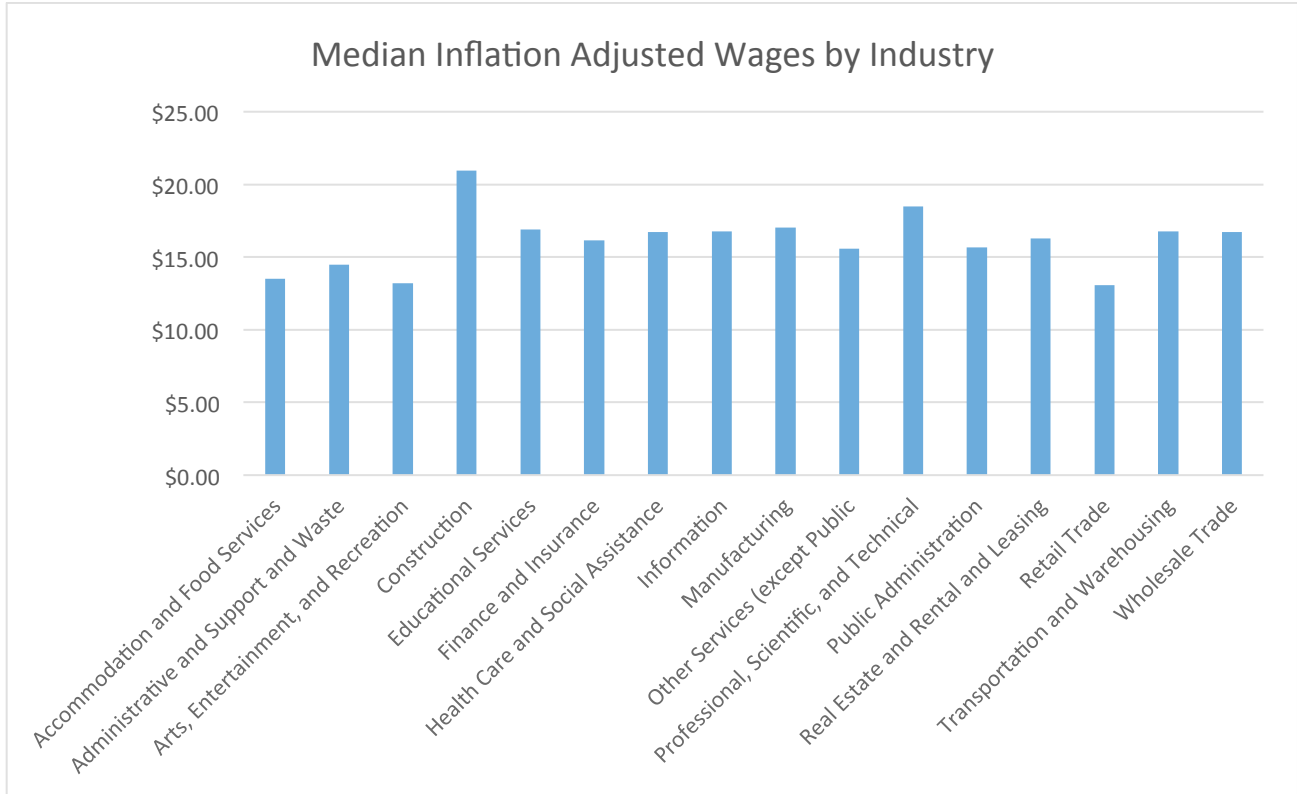
Erin Frasier, Ed.D.

State Board for Community & Technical Colleges
Policy Associate, Workforce Education
efrasier@sbctc.edu / 360-704-4339

Jennifer Dellinger

State Board for Community & Technical Colleges
BFET Program Administrator
jdellinger@sbctc.edu / 360.704.3925

Basic Food Employment & Training Median Wages by Industry

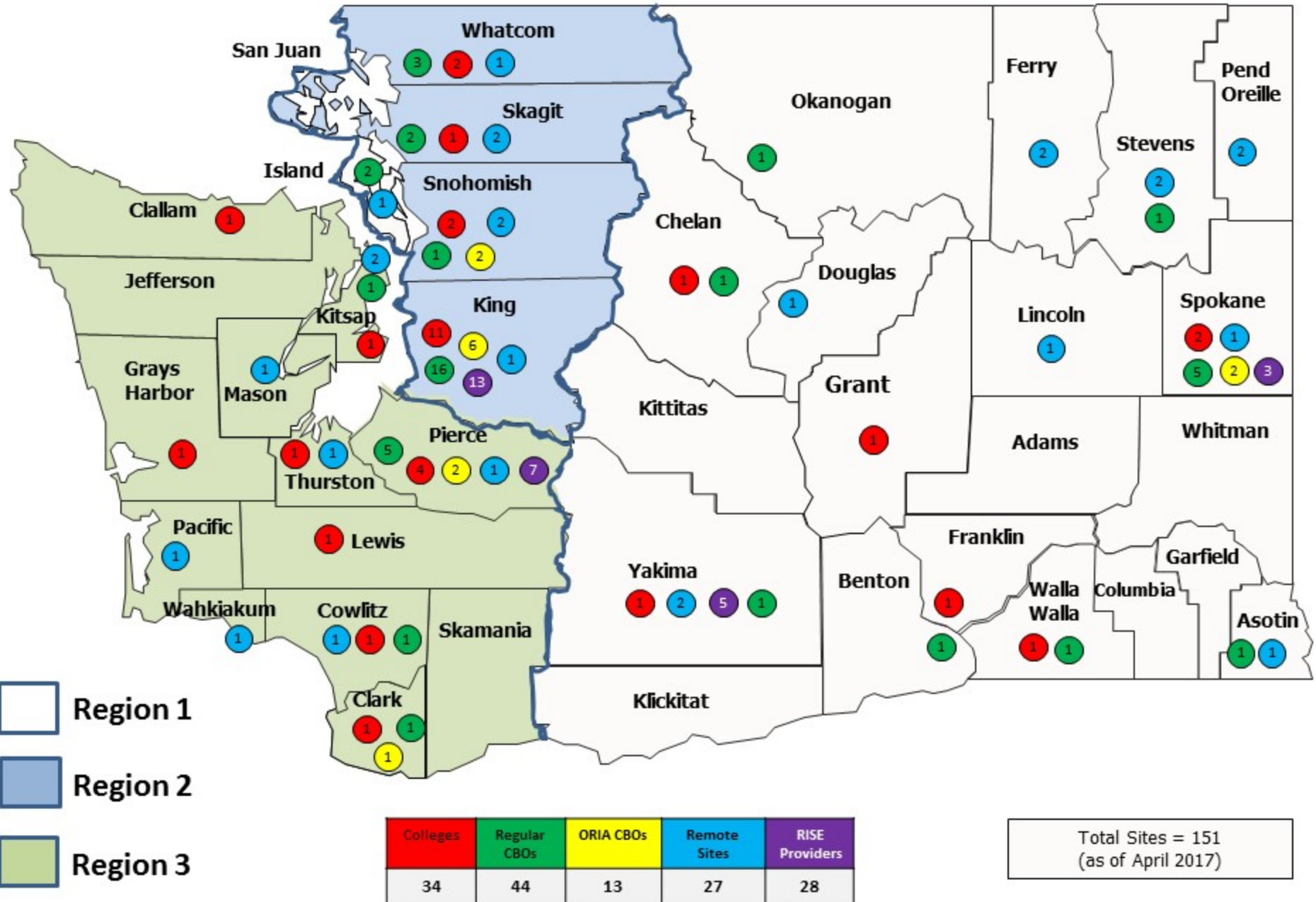


Industry	Median Inflation Adjusted Wages
Accommodation and Food Services	\$13.52
Administrative and Support and Waste Management and Remediation Services	\$14.49
Arts, Entertainment, and Recreation	\$13.22
Construction	\$20.94
Educational Services	\$16.89
Finance and Insurance	\$16.17
Health Care and Social Assistance	\$16.71
Information	\$16.78
Manufacturing	\$17.01
Other Services (except Public Administration)	\$15.56
Professional, Scientific, and Technical Services	\$18.46
Public Administration	\$15.68
Real Estate, Rental, and Leasing	\$16.30
Retail Trade	\$13.05
Transportation and Warehousing	\$16.79
Wholesale Trade	\$16.72

Wages by NAICS group title. Excludes any NAICS category with < 10 records.

Wages adjusted for inflation to the first quarter of 2017

Basic Food Employment and Training (BFET) Colleges and Community Based Organizations (CBOs)



Item IV.A.I.

**REFERENCE
MATERIALS**



UNIVERSITY of HAWAI'I®
**COMMUNITY
COLLEGES**



HO'ŌLA 'IKE



(Gift of Knowledge)

A Partnership with Shared Vision

Pathways out of Poverty



HO'ŌLA 'IKE

(Gift of Knowledge)

Supporting Hawaii's low income students through college workforce training by removing economic and financial barriers to success.

Leveraging resources from DHS & UHCCs





The Genesis & Inspiration

DHS SNAP Employment & Training Program (E&T)

- Approximately 90,000 clients receiving SNAP
- 3,500 SNAP clients in Employment / Training Program
 - Previous Services: Job Search & worksite training

2013 - DHS Outlines Improvement Goals:

- 1) Transition more clients from welfare to self sufficiency
- 2) Provide more skills and employment training to clients
- 3) Reach eligible population not currently being served

2014 DHS contacts WCC to propose a partnership





DHS Lists Key Elements

DHS Needs

UHCC Resources



- Employment prep
- Workforce training
- Career pathways
- Work base learning
- Credentialed training
- Employer connections
- Training support

- Career centers
- Continuing ed. Workforce programs
- CTE programs / Continuing educ.
- Apprenticeships
- CTE programs
- Advisory boards / Sector partnerships
- Counselors, tutors, supplemental instr.

UHCC Student Barriers

DHS Resources

UHCC Needs



- \$ for training / education
- \$ for bus, gas, repairs
- \$ food subsidies
- Childcare providers
- \$ for basic education
- Emergency housing
- \$ 50% reimbursement!
- Reduce student expenses
- Student transportation barriers
- Reduce food insecurity
- Care for dependents
- Remedial education
- Reduce homelessness
- \$ funding for campus & students



Student Eligibility:

- Receive SNAP benefits from DHS
- Enroll in non credit workforce training or:
- Min. 6 credits in Career Technical credit program
- Maintain good academic standing

Benefits provided by DHS:

STUDENT CAN SAVE OVER \$4,700 A YEAR!

STUDENT SAVINGS - FALL SEMESTER \$2,375

\$1,575 + \$300 + \$500

1



SNAP Food Assistance
(avg. \$315/mo.)

2



Reimbursement for
books and supplies
(uniforms, tools, etc.)

3



Reimbursement for
bus pass or
gas money
(up to \$100/mo.)

STUDENT SAVINGS - SPRING SEMESTER \$2,375

\$1,575 + \$300 + \$500

1



SNAP Food Assistance
(Avg. \$315/mo.)

2



Reimbursement for
books and supplies
(uniforms, tools, etc.)

3



Reimbursement for
bus pass or
gas money
(up to \$100/mo.)

DHS Support for Colleges



- Trust and open communication between Agency administrators
- DHS waives SNAP 20/hr work requirement, allowing for education
- DHS converts program to voluntary participation
- Startup funding provided for college program operational costs
- Colleges request 50% reimbursement of non federal support \$ (sustainability plan for college programs)
- Colleges written into DHS State plan and line itemed
- Colleges update student progress data in DHS database
- WCC serves as UHCC consortium lead and DHS contract liaison
- DHS funds SNAP benefits and student reimbursement of education



Budget & Expansion

FY 18-19: \$1,395,000
(\$653,000 – Operational
\$739,000 – Campus Reimbursements)

2016
UNIVERSITY of HAWAII®
LEEWARD
COMMUNITY COLLEGE



2017
UNIVERSITY of HAWAII®
HAWAII
COMMUNITY COLLEGE



2017
UNIVERSITY of HAWAII®
KAPI'OLANI
COMMUNITY COLLEGE



2015
UNIVERSITY of HAWAII®
WINDWARD
COMMUNITY COLLEGE



7/2018
UNIVERSITY of HAWAII®
MAUI COLLEGE



7/2018
UNIVERSITY of HAWAII®
HONOLULU
COMMUNITY COLLEGE





UNIVERSITY of HAWAII®
COMMUNITY
COLLEGES

Campus Reimbursement

* Only non federal funds spent to support HINET program

Example:

#1 UHCC expenditures (non federal)

- \$200,000 – KSBE scholarship
- \$350,000 – Hawaii’s Promise Scholarship
- \$600,000 – College opportunity grants
- \$120,000 – College counselor salary
- \$85,000 - Campus space for HINET

- \$1,355,000 Claim #1- 50% reimbursement request

+ \$667,500

Reimbursement #1 to campus

#2 Expense plan for reimbursement 1 received

- \$100,000 – HINET staff salary
- \$450,000 – HINET student scholarship
- \$65,000 – Student emergency fund
- \$52,500 - Tutoring for HINET

- \$667,500 50% reimbursement request



Reimbursement #2 to campus

+ \$333,750



Mahalo!

Special thanks to:

- Doug Dykstra – Chancellor, WCC
- Pankaj Bhanot – Director, DHS
- Geneva Spear – SNAP E&T Program Specialist
- Kathy Helfrich – WCC HINET Program Coordinator
- Cindy Sunada – WCC HINET Admin. / Fiscal Specialist





EAT HEALTHY

RECEIVE FUNDING & SUPPORT FOR COLLEGE



ACHIEVE YOUR GOAL

Apply for HINET & SNAP

Hawai'i CC (808) 934-2700 / (808) 934-2689

Kapio'lani CC (808) 734-9341

Leeward CC (808) 455-0563 / (808) 455-0240

Windward CC (808) 235-7320

www.hinethawaii.org



UNIVERSITY of HAWAII
COMMUNITY COLLEGES

COLLEGE • EDUCATION • TRAINING • EMPLOYMENT



HINET: College and Workforce Training Funding and Support

Windward Community College offers a program in partnership with the State of Hawai'i and other service providers to deliver assistance and support for college and workforce training. HINET (Hawaii Nutrition, Employment, and Training) program is a federally funded program designed to help remove barriers and provide students with access to education and skills training opportunities so they can earn a living wage and achieve financial independence.

Students who qualify may be eligible to receive:

- ✓ **Tuition Assistance**
- ✓ **Assistance with Books and Mandatory Fees** (funds pending)
- ✓ **Service Learning**
- ✓ **Workforce Training**
- ✓ **Educational Advising, Academic Coaching and Personal Support**
- ✓ **Support Services**
 - Bus Pass, Gas Money
 - Employment Advising
 - Job Search Assistance
 - Supplemental Instruction
 - Tutoring
 - Uniforms
 - Resume Writing
 - Emergency Costs
 - Career Coaching

Program Eligibility Criteria

- ✓ Completion of the FAFSA
- ✓ Currently receiving or eligible to receive SNAP benefits through DHS (Department of Human Services) (We will help you apply.)
- ✓ Preparing for vocational, professional technical non-transfer degree or certificate program
- ✓ Enrolled in Windward Community College at a minimum of 6 credit hours (part-time) or in an approved noncredit workforce training program or 3 credit hours in a basic education course
- ✓ Not receiving TANF or SSDI



What Do You Want For Your Future?

Are you looking for a New Career, Job Training, or Financial Security? Are you wanting to improve your Math and English Skills to get a better job and Earn A Living Wage?



Service Provider Partners

Contact Windward Community College, Service providers, or your local SNAP office. Windward Community College will advise you on job training or retraining courses. We will provide you with support to cover transportation, books, uniforms and school supplies and job search assistance.

A SNAP office will assist you with your SNAP needs.



Are You Eligible?

You may qualify if:

- ✓ You are a student at Windward CC enrolled in a workforce program
- ✓ You are currently receiving or qualify for SNAP (We will help you apply.)
- ✓ You meet the SNAP gross income guidelines:

SNAP GROSS INCOME STANDARDS (effective 10/1/18)

Household Size	200% Monthly Gross Income
1	\$2,328
2	\$3,156
3	\$3,984
4	\$4,812



To apply for SNAP benefits through DHS visit any local processing center or your local community campus HINET office.

Or download form: <http://humanservices.hawaii.gov/bessd/snap/>





UNIVERSITY of HAWAII*
WINDWARD
 COMMUNITY COLLEGE

Workforce Training Programs

The following courses, degrees and certificates are currently available to you at Windward Community College.

Workforce Training

- Certified Nurse's Aide
- Ocean Education & Safety
- Foodservice
- CPR, First Aid and AED
- Universal Banker



Associate Degree (AS)

- Associate in Science in Veterinary Technology

Academic Subject Certificates (ASC)

- Bio-Resources and Technology: Bio-Resources Development and Management
- Business



Certificates of Achievement

- Agripharmitch
- Veterinary Assisting

Certificates of Competence

- Geographic Information System and Global Positioning System
- Web Support
- Plant Food Production and Technology



In coordination with other UH Community Colleges:

Kapiolani CC: Physical Therapy, Dental Assisting, EMT, Hospitality/Tourism

Honolulu CC: Human Services, Admin. of Justice, Early Childhood Education

Leeward CC: Business, Technology, Digital Media, Computer Science, TV Production

FS2018



HO'OLA 'IKE
 (gift of knowledge)

How Do I Apply?

Three ways to apply:

- 1 Online** Complete the on-line "Quick Application" form at hinethawaii.org
- 2 Form by mail** Call the HINET office at (808) 235-7320 to request an application form to be sent to you by mail.
- 3 Make an appointment** by calling the HINET office at (808) 235-7320 to meet and receive assistance to complete your application.

If you are uncertain if you qualify please call the HINET office for more information.



UNIVERSITY of HAWAII*
WINDWARD
 COMMUNITY COLLEGE

Career and Community Education

HINET Office

Monday–Friday
 9:00 am–3:00 pm
 Hale Alaka'i, Room 106
 45-720 Kea'ahala Road
 Kāne'ohe, HI 96744

tel (808) 235-7320
 fax (808) 235-7434
hinethawaii.org

hinethawaii.org

HINET
 Ho'ola 'Ike



Windward
 Community
 College

