

*Office of the Vice President for Community Colleges*

---

**DEMOGRAPHIC INFORMATION  
AND ACHIEVEMENT DATA (DIAD)  
(FOR USE IN THE SELF EVALUATION OF  
EDUCATIONAL QUALITY AND INSTITUTIONAL  
EFFECTIVENESS)**

**FIGURES AND TABLES  
UHCC SYSTEM**

**FALL 2011 Data**

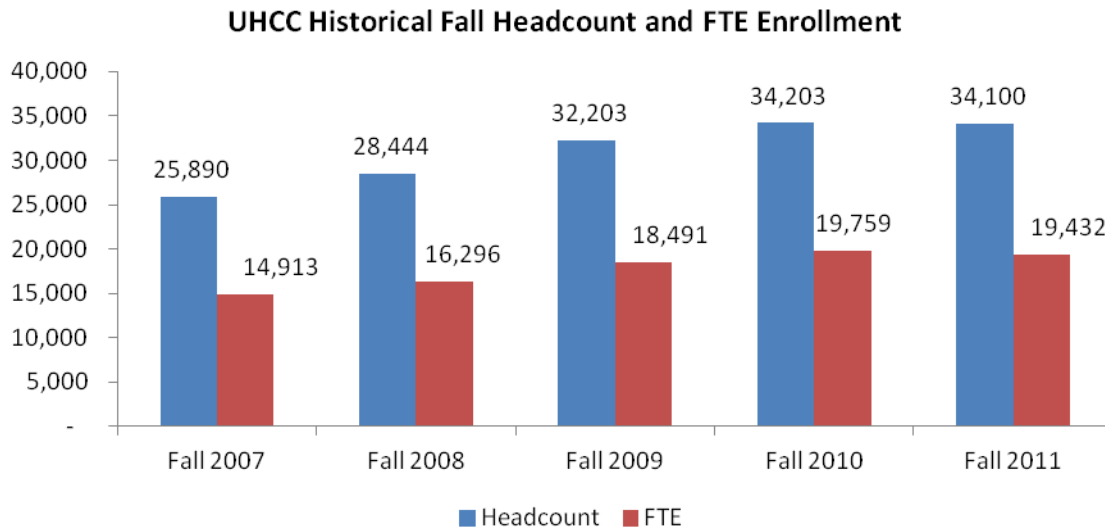
# TABLE OF CONTENTS

Figure 1 – Historical Fall Headcount and Full-Time Equivalent (FTE) Enrollment.....	1
Figure 1b - Historical Fall Headcount and Full-Time and Part-Time Enrollment.....	1
Figure 2 - Enrollment Projections .....	2
Figure 3 - Going Rate High School Graduates (percentage).....	3
Figure 4 - Number High School Graduates Immediate Transition to UH Community Colleges .....	4
Figure 4a - Number of High School Graduates Immediate Transition to UH System by Unit.....	4
Figure 4b – Student Placement Levels .....	5
Table 1 - Enrollment by Residency for Tuition Status, Fall 2007 to Fall 2011 .....	6
Table 2 - International Student Enrollment Fall 2011 .....	7
Figure 5 - University Hawaii Community College System Organizational Chart.....	8
Figure 6 - State of Hawaii, Students, and Faculty Diversity .....	9
Figure 7 - Hawaiian/Part Hawaiian Students Enrolled University of Hawai'i System .....	10
Figure 8 - Where Hawaiian/Part Hawaiian Students Enroll (Fall Semester).....	10
Table 3 - Staff by Ethnicity and Gender Fall 2011.....	11
Table 4 - Full Time Faculty by Rank, Ethnicity, and Gender Fall 2011 .....	12
Table 5 - Student Enrollment - Ethnicity and Gender Fall 2011 .....	13
Figure 9 - Retention (Course Completion).....	14
Figure 10 - Persistence.....	15
Figure 11 - Annual Number Degrees and Certificates Awarded .....	16
Figure 12 - Continuing Enrollment, Transfer, and Graduation of first-time, full-time, degree-seeking students within 150 of first time enrollment .....	17
Table 6 - Transfer Numbers and Rates .....	18
Figure 13 - Developmental Education Completion.....	19
Figure 13a - Success in Next Course.....	21
Figure 14 - Employment Status .....	23
Figure 15 - Graduates and Leavers Job Preparation .....	23
Figure 16 - CSSE Benchmark Percentiles .....	24
Appendix A - Figure 1: Historical Fall Headcount and Full-Time Equivalent (FTE) Enrollment Disaggregated Data.....	A
Appendix B - Figure 9: Retention Disaggregated Data .....	B
Appendix C - Figure 10: Persistence Disaggregated Data .....	C
Appendix D - Figure 11: Degrees and Certificates Awarded Data .....	D
Appendix E - Figure 13a: Developmental Education - Success in the Next College Level Course Disaggregated Data.....	E

## STUDENT ENROLLMENT

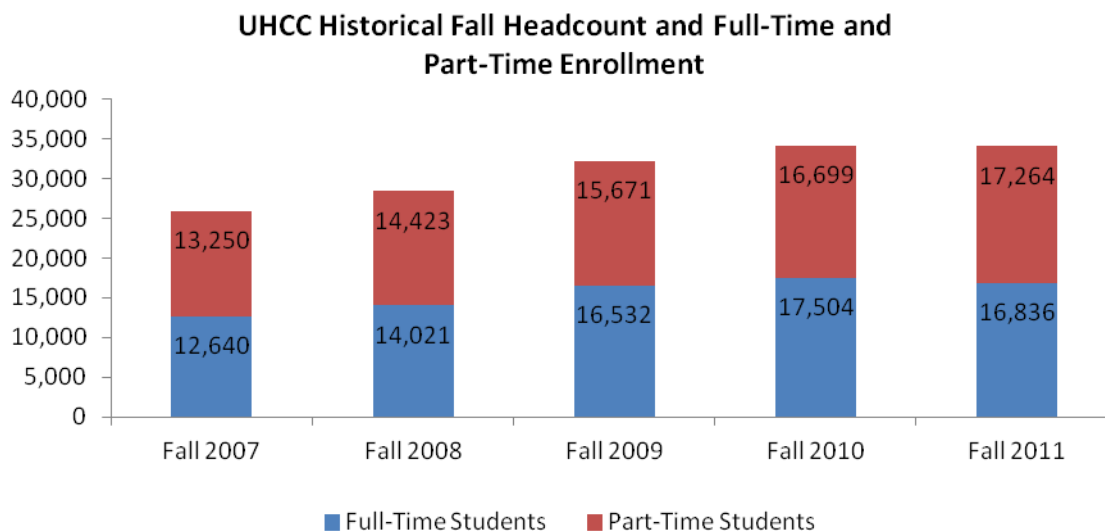
Full Time Equivalent (FTE) is defined as the total student semester hours, summed across all course enrollments in regular credit courses, divided by 15.

**Figure 1 – Historical Fall Headcount and Full-Time Equivalent (FTE) Enrollment**



Source: ODS

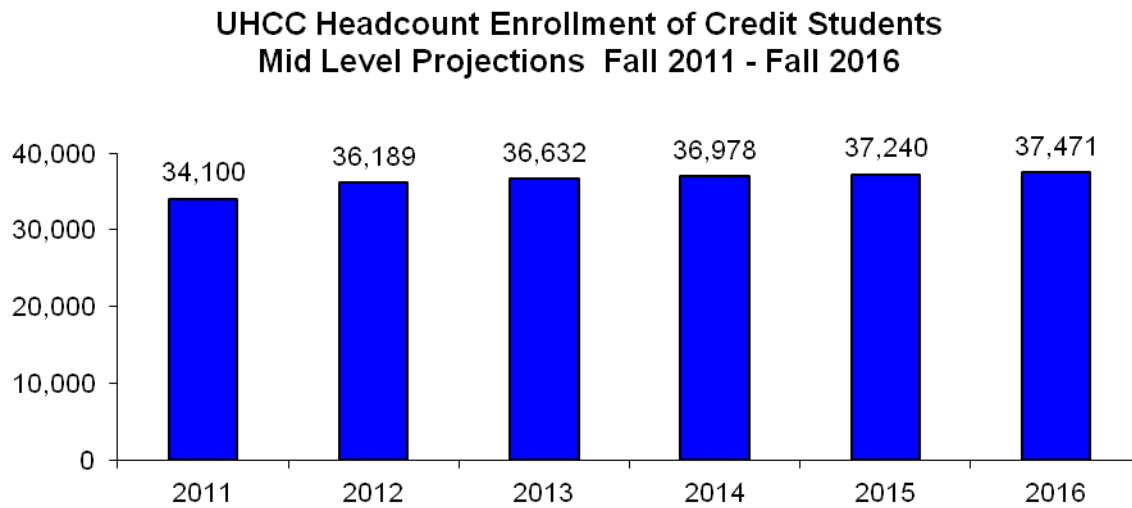
**Figure 1b - Historical Fall Headcount and Full-Time and Part-Time Enrollment**



Source: ODS

# ENROLLMENT PROJECTIONS

Figure 2 - Enrollment Projections

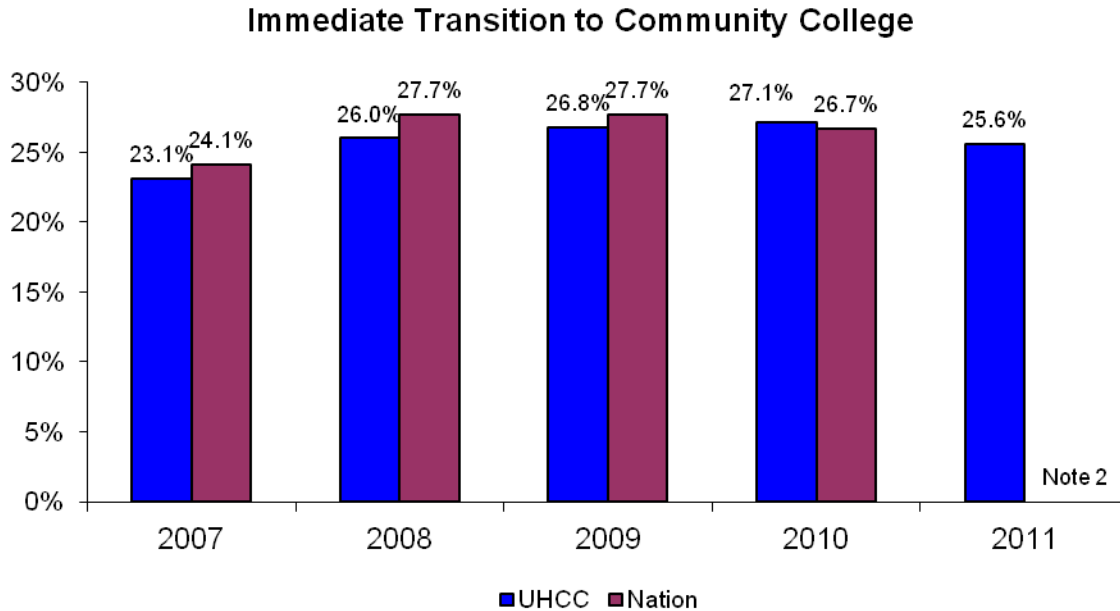


Source: MAPS – Enrollment Projections University of Hawaii Community Colleges Fall 2010 to Fall 2016, Table 1.

## GOING RATE

Going Rate – Percentage Hawaii public and private June high school graduates who enroll in a community college the following fall semester

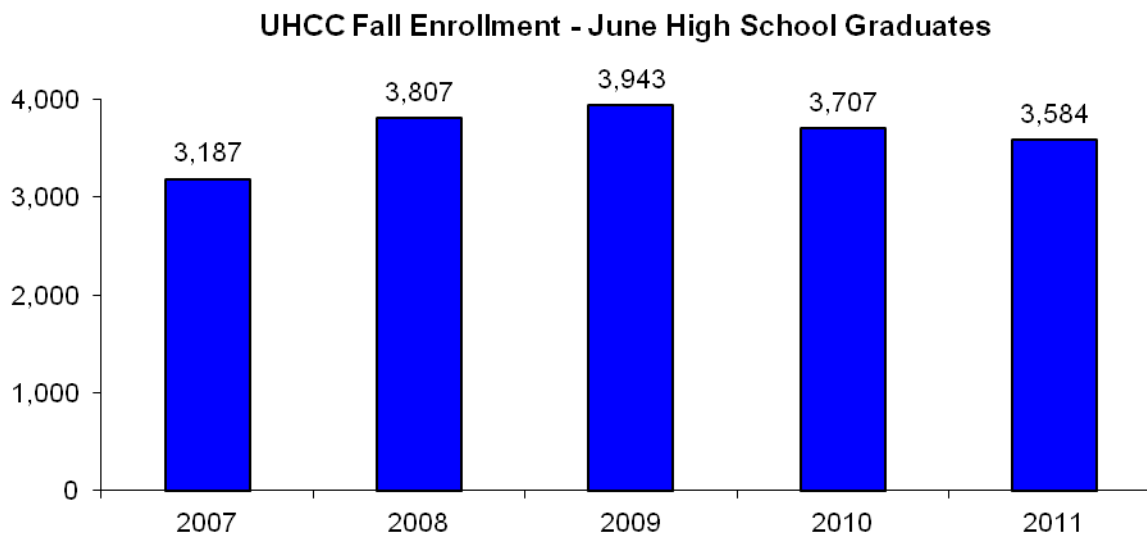
**Figure 3 - Going Rate High School Graduates (percentage)**



Sources:

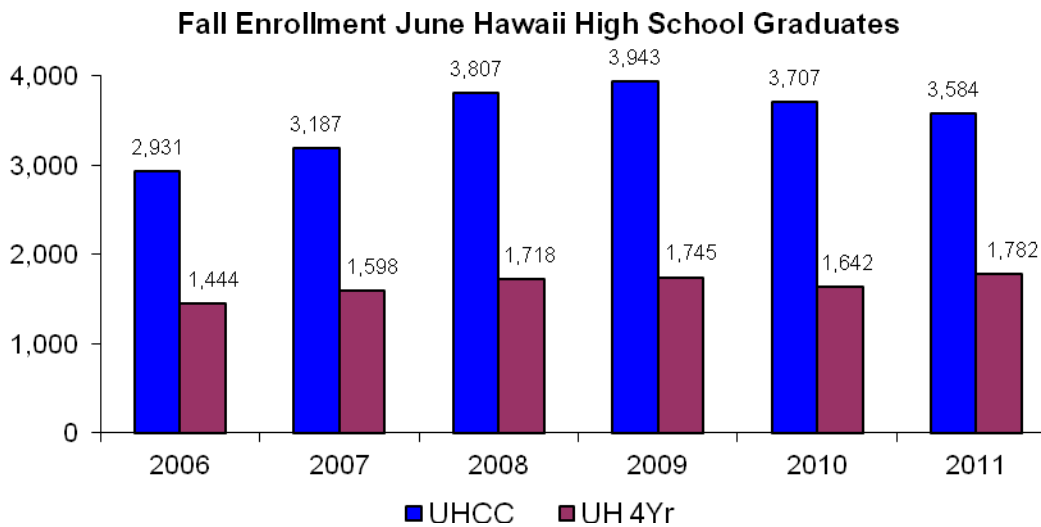
- 1) Hawaii: MAPS – High School Background of First-Time Students, Table 4  
Includes public and private graduates
- 2) Nation: 2011 Data not available (National Center for Education Statistics table - College Enrollment and Labor Force Status of High School Completers).

**Figure 4 - Number High School Graduates Immediate Transition to UH Community Colleges**



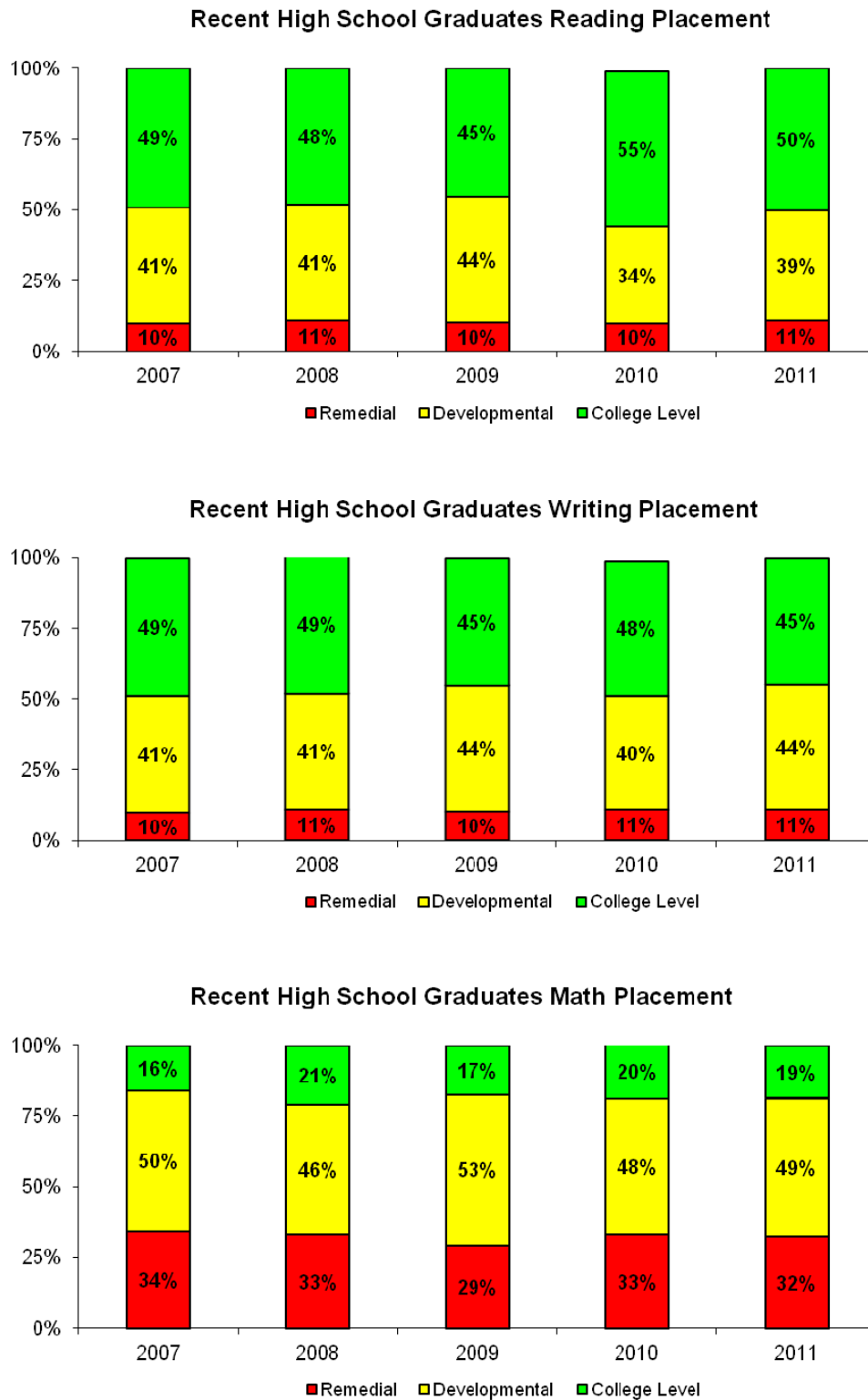
Source: MAPS – High School Background of First-Time Students, Table 4

**Figure 4a - Number of High School Graduates Immediate Transition to UH System by Unit**



Source: MAPS – High School Background of First-Time Students, Table 4

**Figure 4b – Student Placement Levels**



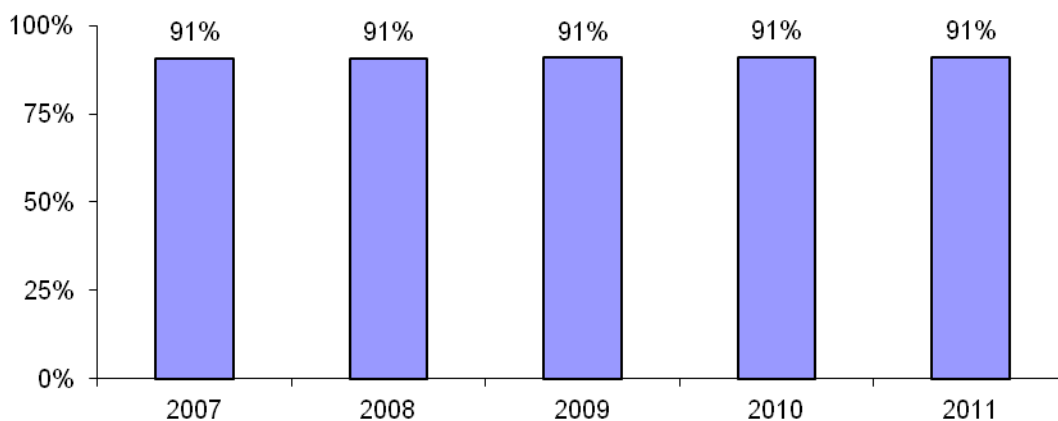
Source: Campus Testing Centers

## ENROLLMENT BY RESIDENCY FOR TUITION STATUS

Table 1 - Enrollment by Residency for Tuition Status, Fall 2007 to Fall 2011

	Fall 2007		Fall 2008		Fall 2009		Fall 2010		Fall 2011	
	No.	%	No.	%	No.	%	No.	%	No.	%
Resident	23,202	89.6%	25,524	89.7%	28,975	90.0%	30,807	90.1%	30,644	89.9%
Resident Converted	246	1.0%	264	0.9%	262	0.8%	275	0.8%	323	0.9%
<b>Residents Subtotal</b>	<b>23,448</b>	<b>90.6%</b>	<b>25,788</b>	<b>90.7%</b>	<b>29,237</b>	<b>90.8%</b>	<b>31,082</b>	<b>90.9%</b>	<b>30,967</b>	<b>90.8%</b>
Not Exempted	1,338	5.2%	1,494	5.3%	1,618	5.0%	1,711	5.0%	1,706	5.0%
West Undergraduate Exchange	44	0.2%	45	0.2%	58	0.2%	54	0.2%	79	0.2%
Military Exemption	669	2.6%	707	2.5%	793	2.5%	857	2.5%	817	2.4%
Faculty/Staff Exemption	20	0.1%	23	0.1%	30	0.1%	29	0.1%	25	0.1%
Institutional Exemption	119	0.5%	61	0.2%	24	0.1%	10	0.0%	3	0.0%
Student Exchange	1	0.0%	4	0.0%	0	0.0%	2	0.0%	1	0.0%
Pacific-Asian Exemption	14	0.1%	9	0.0%	1	0.0%		0.0%		0.0%
East-West Center	1	0.0%	1	0.0%	0	0.0%		0.0%	1	0.0%
Hawaiian Exemption	161	0.6%	184	0.6%	251	0.8%	255	0.7%	305	0.9%
Rev Institutional/Exempt	60	0.2%	111	0.4%	162	0.5%	162	0.5%	158	0.5%
Hawai'i National Guard & Reserve	12	0.0%	17	0.1%	29	0.1%	41	0.1%	38	0.1%
<b>Non-Resident Subtotal</b>	<b>2,439</b>	<b>9.4%</b>	<b>2,656</b>	<b>9.3%</b>	<b>2,966</b>	<b>9.2%</b>	<b>3,121</b>	<b>9.1%</b>	<b>3,133</b>	<b>9.2%</b>
<b>No Data</b>	<b>0</b>	<b>0.0%</b>	<b>0</b>	<b>0.0%</b>	<b>0</b>	<b>0.0%</b>	<b>0</b>	<b>0.0%</b>	<b>0</b>	<b>0.0%</b>
<b>GRAND TOTAL</b>	<b>25,887</b>	<b>100%</b>	<b>28,444</b>	<b>100%</b>	<b>32,203</b>	<b>100%</b>	<b>34,203</b>	<b>100%</b>	<b>34,100</b>	<b>100%</b>

Percent Community College Students Paying Resident Tuition



Source: MAPS – Fall Enrollment Report University of Hawaii Community Colleges, Table 3 Selected Characteristics of Credit Students



## INTERNATIONAL STUDENT ENROLLMENT

The University's long-standing interest in International Education has attracted a wealth of academic expertise, resources, and linkages. The University of Hawaii Community Colleges are engaged in a variety of international programs and projects, reflecting their commitment to developing institutional expertise in international education, with a particular focus on the Asia and Pacific region.

**Table 2 - International Student Enrollment Fall 2011**

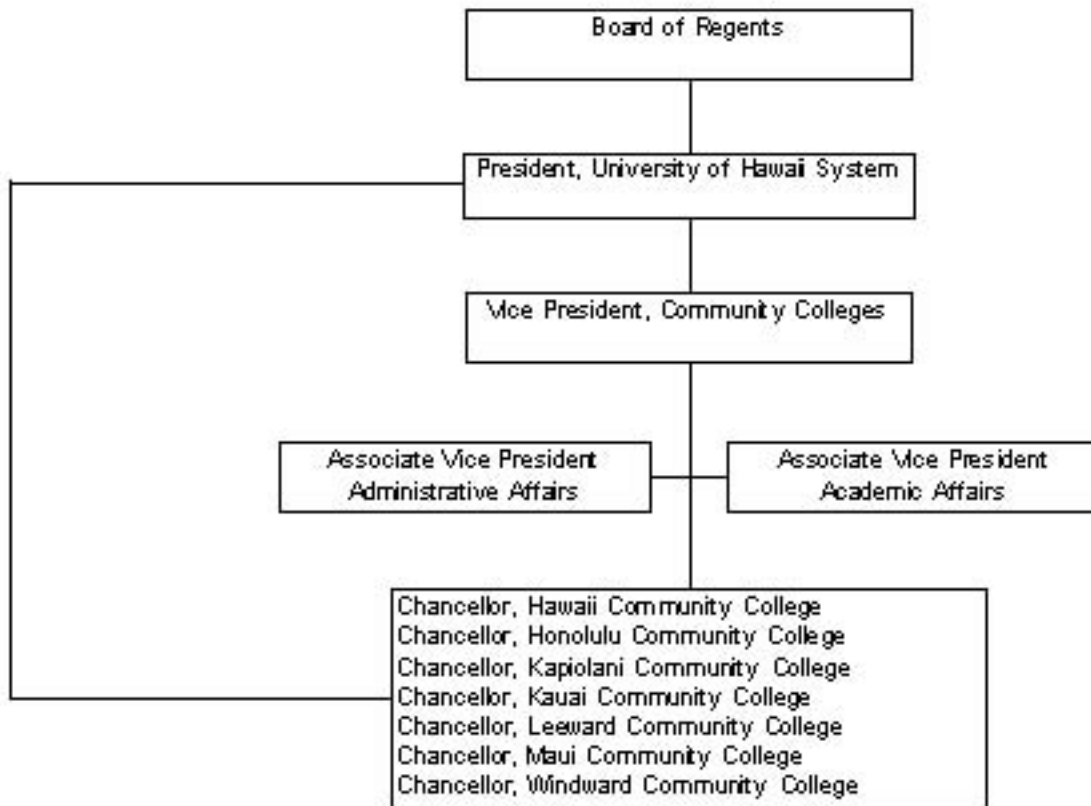
Region of Origin	HAW	HON	KAP	KAU	LEE	MAU	WIN	UHCC
Africa	-	-	1	-	-	-	-	1
Americas	1	6	58	3	7	11	1	87
Asia	35	32	422	4	39	15	2	549
Australia	-	-	1	-	-	-	-	1
Europe	-	4	14	1	2	2	2	25
Middle East	-	1	1	-	-	-	-	2
Oceania	2	2	8	-	2	-	-	14
Total	38	45	505	8	50	28	5	679

Source: ODS – IRO\_BASE\_UH (End of Semester)

# ORGANIZATIONAL CHART

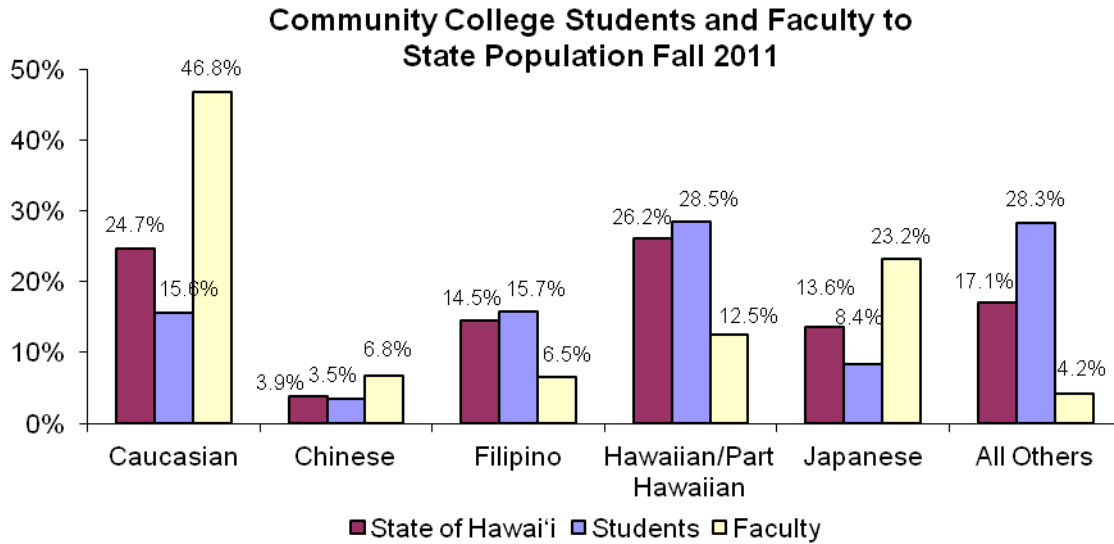
**Figure 5 - University Hawaii Community College System Organizational Chart**

## ORGANIZATIONAL CHART



## DIVERSITY

**Figure 6 - State of Hawaii, Students, and Faculty Diversity**

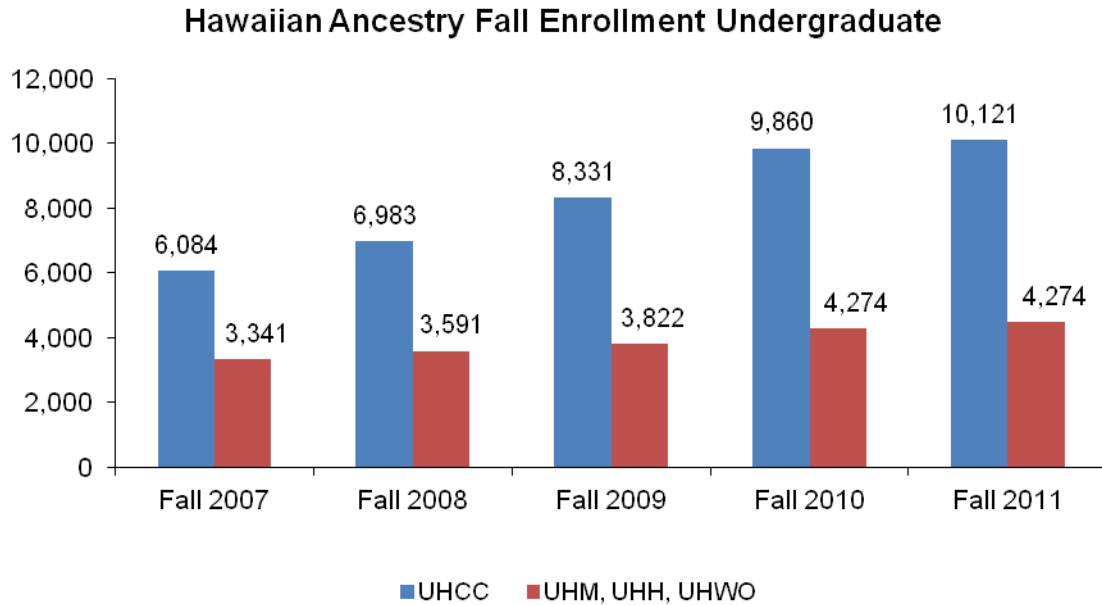


**Sources:**

- 1) State of Hawaii: Population 2011 (<http://hawaii.gov/dbedt>). Native Hawaiian Race Alone or in combination with one or more races.
- 2) Students: ODS – IRO\_BASE\_UH (Census)  
UH System MAPS UHCC Fall 2011 Enrollment Report Table 3
- 3) Full Time Faculty: Community Colleges Human Resource Office

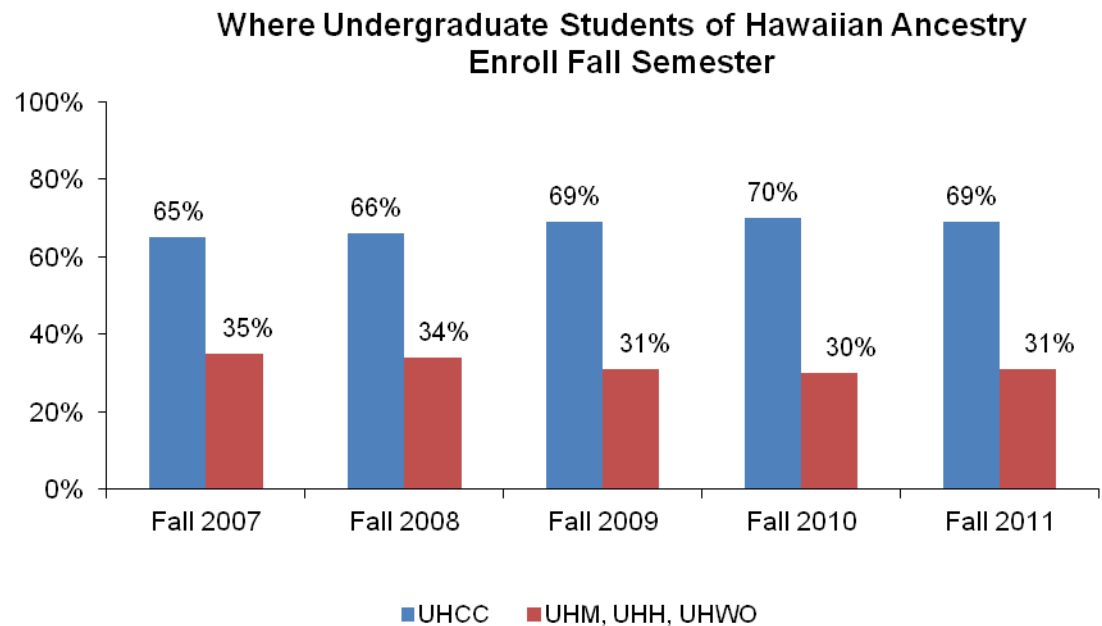
## HAWAIIAN AND PART HAWAIIAN ENROLLMENT

Figure 7 - Hawaiian/Part Hawaiian Students Enrolled University of Hawai'i System



Source: ODS (CENSUS)

Figure 8 - Where Hawaiian/Part Hawaiian Students Enroll (Fall Semester)



Source: ODS (CENSUS)

# EMPLOYEE PROFILE

**Table 3 - Staff by Ethnicity and Gender Fall 2011**

UHCC SYSTEM	Total		Exec/Mgr		Admin, Prof & Tech		Civil Service		Instruct Faculty		Other Faculty	
	Count	%	Count	%	Count	%	Count	%	Count	%	Count	%
<b>All Employees</b>	<b>1,788</b>		<b>51</b>	100.0	<b>376</b>	100.0	<b>396</b>	100.0	<b>749</b>	100.0	<b>207</b>	100.0
<b>Asian and Pacific Islander</b>	<b>870</b>	48.7	<b>27</b>	52.9	<b>215</b>	57.2	<b>245</b>	61.9	<b>284</b>	37.9	<b>99</b>	47.8
Chinese	115	6.4	0	0.0	26	6.9	24	6.1	46	6.1	19	9.2
Filipino	215	12.0	1	2.0	49	13.0	103	26.0	43	5.7	19	9.2
South Asian/Asian Indian	12	0.7	0	0.0	1	0.3	0	0.0	11	1.5	0	0.0
Japanese	496	27.7	26	51.0	136	36.2	111	28.0	165	22.0	58	28.0
Korean	26	1.5	0	0.0	2	0.5	5	1.3	16	2.1	3	1.4
Laotian	0	0.0	0	0.0	0	0.0	0	0.0	0	0.0	0	0.0
Thai	1	0.1	0	0.0	0	0.0	0	0.0	1	0.1	0	0.0
Vietnamese	3	0.2	0	0.0	1	0.3	1	0.3	1	0.1	0	0.0
Other Asian	2	0.1	0	0.0	0	0.0	1	0.3	1	0.1	0	0.0
<b>Hawaiian and Pacific Islander</b>	<b>291</b>	16.3	<b>3</b>	5.9	<b>63</b>	16.8	<b>99</b>	25.0	<b>90</b>	12.0	<b>36</b>	17.4
Guam Chamorro	2	0.1	0	0.0	0	0.0	1	0.3	0	0.0	1	0.5
Hawaiian/Part Hawaiian	278	15.5	3	5.9	61	16.2	94	23.7	87	11.6	33	15.9
Micronesian	0	0.0	0	0.0	0	0.0	0	0.0	0	0.0	0	0.0
Samoan	8	0.4	0	0.0	1	0.3	3	0.8	3	0.4	1	0.5
Tongan	1	0.1	0	0.0	0	0.0	1	0.3	0	0.0	0	0.0
Other Pacific Islander	2	0.1	0	0.0	1	0.3	0	0.0	0	0.0	1	0.5
Mixed Pacific Islander	0	0.0	0	0.0	0	0.0	0	0.0	0	0.0	0	0.0
<b>Mixed Asian Pacific Islander</b>	<b>0</b>	0.0	<b>0</b>	0.0	<b>0</b>	0.0	<b>0</b>	0.0	<b>0</b>	0.0	<b>0</b>	0.0
<b>Other Ethnic Groups</b>	<b>613</b>	34.3	<b>21</b>	41.2	<b>96</b>	25.5	<b>51</b>	12.9	<b>374</b>	49.9	<b>71</b>	34.3
African American	13	0.7	1	2.0	1	0.3	1	0.3	7	0.9	3	1.4
American Indian/Alaska Native	17	1.0	0	0.0	0	0.0	1	0.3	6	0.8	10	4.8
Caucasian	532	29.8	19	37.3	85	22.6	27	6.8	348	46.5	53	25.6
Hispanic	38	2.1	1	2.0	5	1.3	17	4.3	12	1.6	3	1.4
Mixed	13	0.7	0	0.0	5	1.3	5	1.3	1	0.1	2	1.0
<b>No Response</b>	<b>5</b>	0.3	<b>0</b>	0.0	<b>2</b>	0.5	<b>1</b>	0.3	<b>1</b>	0.1	<b>1</b>	0.5
<b>Gender</b>												
Female	1000	55.9	20	39.2	220	58.5	257	64.9	364	48.6	139	67.1
Male	788	44.1	31	60.8	160	42.6	139	35.1	389	51.9	69	33.3

Source: UH Community Colleges Human Resources Office, September 2011

Note: Change in percent calculations from previous editions

*OVPCC Academic Planning, Assessment, and Policy Analysis*

Last updated July 2, 2012

# FACULTY BY RANK, ETHNICITY, AND GENDER

Table 4 - Full Time Faculty by Rank, Ethnicity, and Gender Fall 2011

UHCC SYSTEM	Total		Professor		Associate		Assistant		Instructor	
	Count	%	Count	%	Count	%	Count	%	Count	%
<b>All Faculty</b>	<b>961</b>	<b>100</b>	<b>230</b>	100.0	<b>146</b>	100.0	<b>249</b>	100.0	<b>336</b>	100.0
<b>Asian and Pacific Islander</b>	<b>383</b>	39.9	<b>108</b>	47.0	<b>63</b>	43.2	<b>102</b>	41.0	<b>110</b>	32.7
Chinese	65	6.8	18	7.8	11	7.5	17	6.8	19	5.7
Filipino	62	6.5	8	3.5	7	4.8	18	7.2	29	8.6
South Asian/Asian Indian	11	1.1	3	1.3	2	1.4	3	1.2	3	0.9
Japanese/Okinawan	223	23.2	72	31.3	40	27.4	59	23.7	52	15.5
Korean	19	2.0	6	2.6	3	2.1	3	1.2	7	2.1
Laotian	0	0.0	0	0.0	0	0.0	0	0.0	0	0.0
Thai	1	0.1	1	0.4	0	0.0	0	0.0	0	0.0
Vietnamese	1	0.1	0	0.0	0	0.0	1	0.4	0	0.0
Other Asian	1	0.1	0	0.0	0	0.0	1	0.4	0	0.0
<b>Hawaiian and Pacific Islander</b>	<b>126</b>	13.1	<b>12</b>	5.2	<b>9</b>	6.2	<b>41</b>	16.5	<b>64</b>	19.0
Guam Chamorro	1	0.1	0	0.0	1	0.7	0	0.0	0	0.0
Hawaiian/Part Hawaiian	120	12.5	11	4.8	8	5.5	41	16.5	60	17.9
Micronesian	0	0.0	0	0.0	0	0.0	0	0.0	0	0.0
Samoan	4	0.4	0	0.0	0	0.0	0	0.0	4	1.2
Tongan	0	0.0	0	0.0	0	0.0	0	0.0	0	0.0
Other Pacific Islander	1	0.1	1	0.4	0	0.0	0	0.0	0	0.0
Mixed Pacific Islander	0	0.0	0	0.0	0	0.0	0	0.0	0	0.0
Mixed Asian Pacific Islander	0	0.0	0	0.0	0	0.0	0	0.0	0	0.0
<b>Other Ethnic Groups</b>	<b>450</b>	46.8	<b>110</b>	47.8	<b>74</b>	50.7	<b>106</b>	42.6	<b>160</b>	47.6
African American	9	0.9	1	0.4	0	0.0	3	1.2	5	1.5
American Indian/Alaska Native	7	0.7	2	0.9	1	0.7	1	0.4	3	0.9
Caucasian	411	42.8	104	45.2	72	49.3	96	38.6	139	41.4
Hispanic	15	1.6	1	0.4	1	0.7	6	2.4	7	2.1
Mixed	8	0.8	2	0.9	0	0.0	0	0.0	6	1.8
<b>No Response</b>	<b>2</b>	<b>0.2</b>	<b>0</b>	<b>0.0</b>	<b>0</b>	<b>0.0</b>	<b>0</b>	<b>0.0</b>	<b>2</b>	<b>0.6</b>
<b>Gender</b>										
Female	503	52.3	118	51.3	78	53.4	134	53.8	173	51.5
Male	458	47.7	112	48.7	68	46.6	115	46.2	163	48.5

Source: UH Community Colleges Human Resources Office, October 2011

Note: Change in percent calculations from previous editions

## STUDENT PROFILE

Table 5 - Student Enrollment - Ethnicity and Gender Fall 2011

	All Students		Male		Female		No Data	
	Count	%	Count	%	Count	%	Count	%
<b>All Student</b>	<b>34,100</b>		14,411	42.3	19,438	57.0	251	0.7
<b>Asian and Pacific Islander</b>	<b>23,112</b>	67.8	<b>9,701</b>	28.4	<b>13,233</b>	38.8	<b>178</b>	0.5
Asian	<b>12,579</b>	36.9	<b>5,763</b>	16.9	<b>6,728</b>	19.7	<b>88</b>	0.3
Chinese	1,180	3.5	569	1.7	598	1.8	13	0.0
Filipino	5,365	15.7	2,372	7.0	2,950	8.7	43	0.1
Indian Subcontinent	108	0.3	45	0.1	63	0.2	0	0.0
Japanese	2,872	8.4	1,358	4.0	1,498	4.4	16	0.0
Korean	647	1.9	301	0.9	345	1.0	1	0.0
Laotian	56	0.2	25	0.1	31	0.1	0	0.0
Mixed Asian	1,871	5.5	868	2.5	990	2.9	13	0.0
Other Asian	166	0.5	80	0.2	85	0.2	1	0.0
Thai	56	0.2	22	0.1	33	0.1	1	0.0
Vietnamese	258	0.8	123	0.4	135	0.4	0	0.0
<b>Hawaiian and Pacific Islander</b>	<b>10,533</b>	30.9	<b>3,938</b>	11.5	<b>6,505</b>	19.1	<b>90</b>	0.3
Guam Chamorro	59	0.2	23	0.1	36	0.1	0	0.0
Hawaiian Part Hawaiian	9,709	28.5	3,625	10.6	6,000	17.6	84	0.2
Micronesian	195	0.6	84	0.2	110	0.3	1	0.0
Samoan	260	0.8	88	0.3	169	0.5	3	0.0
Tongan	79	0.2	18	0.1	60	0.2	1	0.0
Mixed Pacific Islander	56	0.2	19	0.1	36	0.1	1	0.0
Other Pacific Islander	175	0.5	81	0.2	94	0.3	0	0.0
<b>Other Ethnic Groups</b>	<b>10,988</b>	32.2	<b>4,710</b>	13.8	<b>6,205</b>	18.2	<b>73</b>	0.2
African American	499	1.5	270	0.8	223	0.7	6	0.0
American Indian/Alaskan Native	143	0.4	64	0.2	79	0.2	0	0.0
Caucasian	5,312	15.6	2,223	6.5	3,062	9.0	27	0.1
Hispanic	633	1.9	242	0.7	389	1.1	2	0.0
Mixed	4,132	12.1	1,775	5.2	2,324	6.8	33	0.1
<b>No Response</b>	<b>269</b>	0.8	<b>136</b>	0.4	<b>128</b>	0.4	<b>5</b>	0.0

Sources: 1) ODS – IRO\_BASE\_UH (Census)

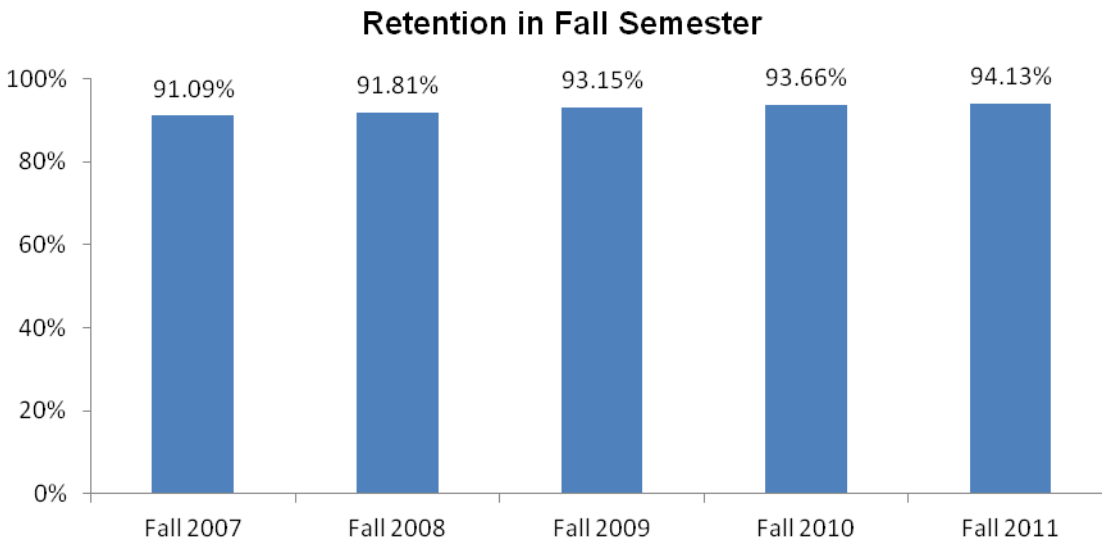
## STUDENT RETENTION, PERSISTENCE, AND DEGREES AND CERTIFICATES AWARDED

The following figures show measures of student success in meeting educational objectives and demonstrating student progress.

### RETENTION

Retention rate refers to those students who are enrolled in a course at the fall census date and who do not drop or withdraw before the end of the semester. Within the University of Hawai'i Community College System, this has also been called Course Completion Rate.

**Figure 9 - Retention (Course Completion)**



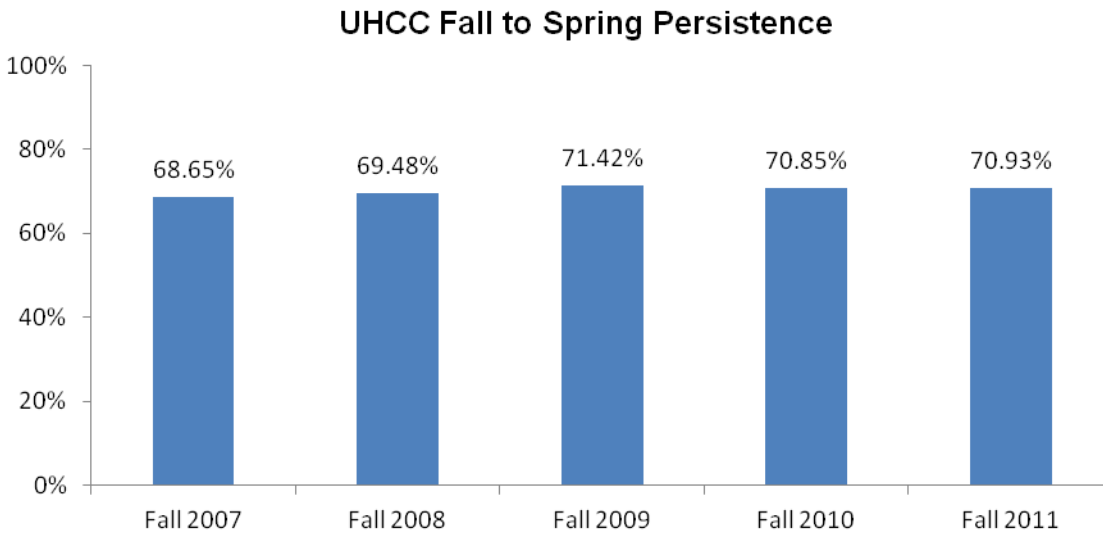
Source: ODS – IRO\_REGS\_UH (End of Semester)



## PERSISTENCE

Persistence refers to students enrolled in the college at the fall census, for whom the college is their “home” campus, and, who are also enrolled in the same “home” campus the following spring.

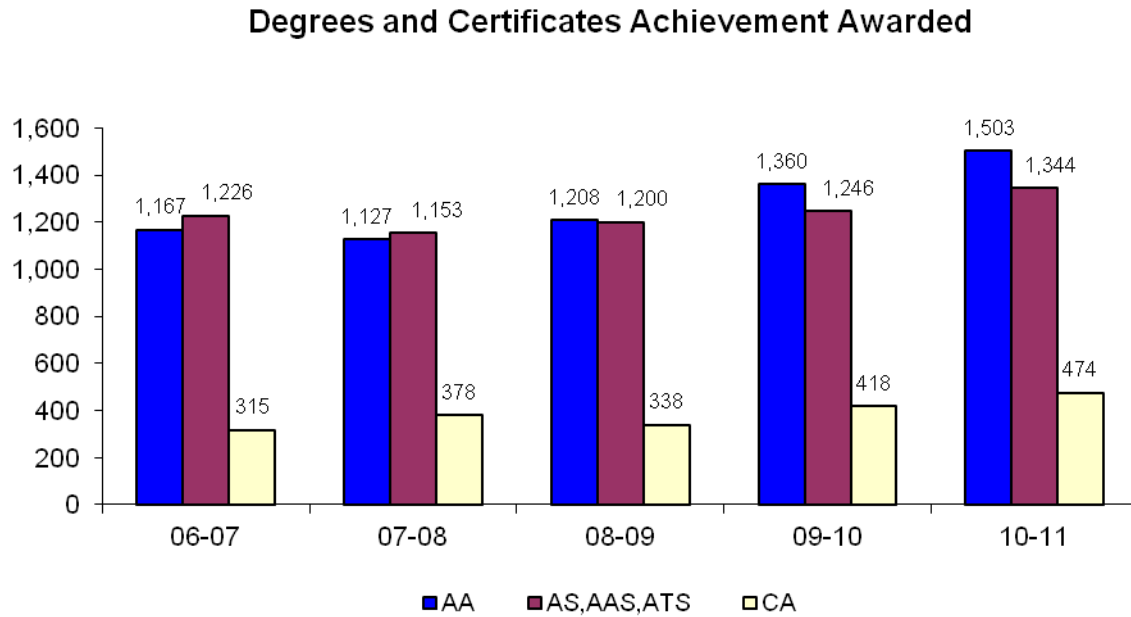
**Figure 10 - Persistence**



Source: ODS – IRO\_REGS\_UH (Census)

## DEGREES AND CERTIFICATES AWARDED

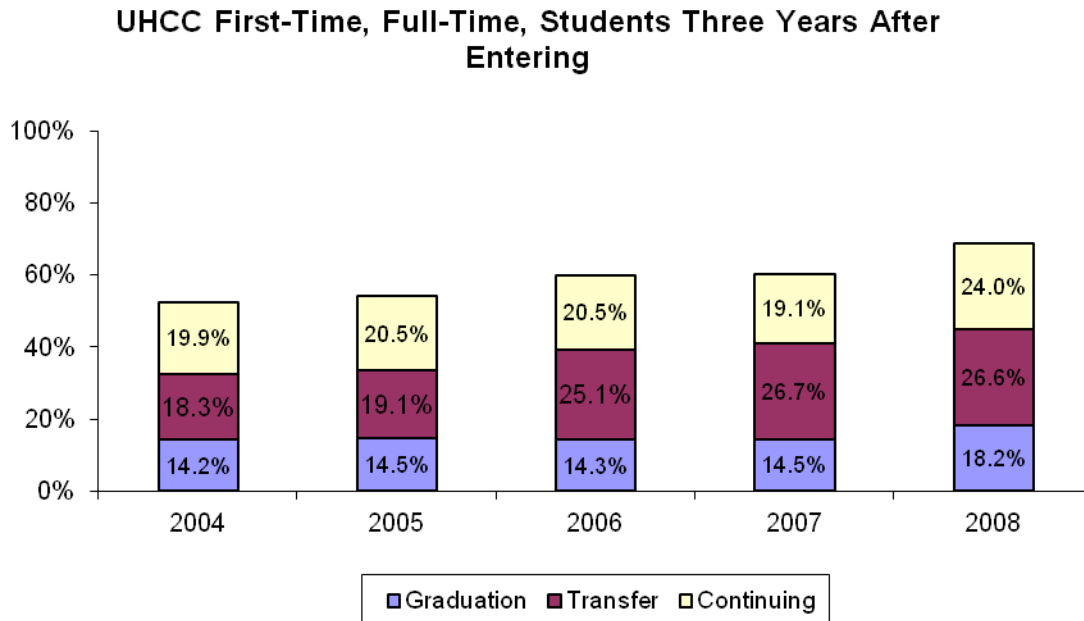
Figure 11 - Annual Number Degrees and Certificates Awarded



Source: ODS - IRO\_DEGREE\_UH (End of Semester)

## CONTINUING ENROLLMENT, TRANSFER, AND GRADUATION

**Figure 12 - Continuing Enrollment, Transfer, and Graduation of first-time, full-time, degree-seeking students within 150 of first time enrollment**



Source: IPEDS – Graduation Rate Survey

Notes:

- 1) Numbers are unduplicated
- 2) Graduation – first time, full time students who received a degree or certificate within 150 of time from first time enrollment
- 3) Transfer – first time, full-time students who transfer (as matched by National Student Clearinghouse data) to another postsecondary institution within 150 of time from first time enrollment
- 4) Continuing – first time, full time students who are still enrolled at the same institution within 150 of time from first time enrollment and who have not received a degree or certificate

## TRANSFERS TO COLLEGES AND UNIVERSITIES

Table 6 looks at the transfer behaviors of students whose last term of attendance was between the semesters of Fall 2008 to Fall 2011 compared against National Student Clearinghouse (NSC) data in June 2012. As some students have attended multiple colleges, the first college that a student attended was selected for this analysis.

**Table 6 - Transfer Numbers and Rates**

Last Term Attended	Total Number of Records	Total Transfers		Transfer to UH 4-Year Institutions		Transfers to a UH Community College		Transfers to Hawaii Private Institutions		Transfer to Out of State Institutions	
		N	%	N	%	N	%	N	%	N	%
Fall 2008	5,347	2,143	40.1	763	35.6	564	26.3	173	8.1	643	30.0
Fall 2009	5,995	2,069	34.5	770	37.2	551	26.6	164	7.9	584	28.2
Fall 2010	6,939	1,941	28.0	803	41.4	451	23.2	153	7.9	534	27.5
Fall 2011	8,201	1,199	14.6	628	52.4	240	20.0	73	6.1	258	21.5
Spring 2009	6,442	2,664	41.4	1,148	43.1	624	23.4	161	6.0	731	27.4
Spring 2010	8,016	2,898	36.2	1,186	40.9	675	23.3	226	7.8	811	28.0
Spring 2011	8,908	2,432	27.3	1,192	49.0	546	22.5	102	4.2	592	24.3
Summer 2009	1,169	724	61.9	322	44.5	79	10.9	34	4.7	289	39.9
Summer 2010	1,148	663	57.8	304	45.9	85	12.8	23	3.5	251	37.9
Summer 2011	1,371	597	43.5	245	41.0	56	9.4	40	6.7	256	42.9

Sources:

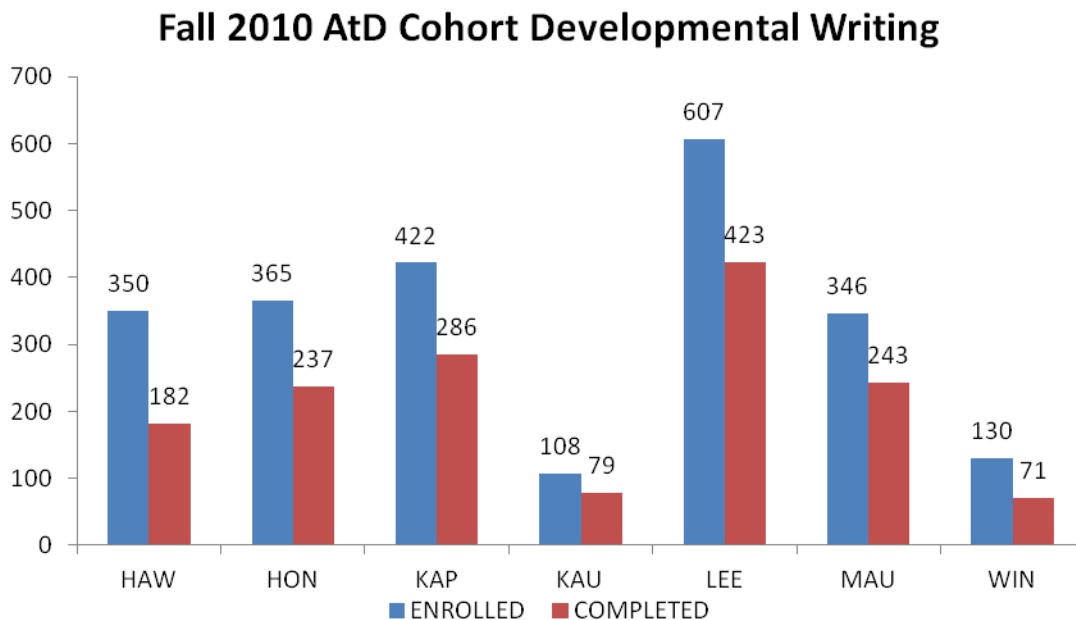
- 1) Operational Data Store (ODS)
- 2) National Student Clearinghouse

## DEVELOPMENTAL EDUCATION COMPLETION

Students lacking academic preparation for their chosen college programs are a national and local concern. The University of Hawaii Community College system is committed to increasing the number and percent of students enrolled in developmental intervention who successfully complete at least one course in the developmental sequence within their first academic year thus making progress towards degree applicable instruction.

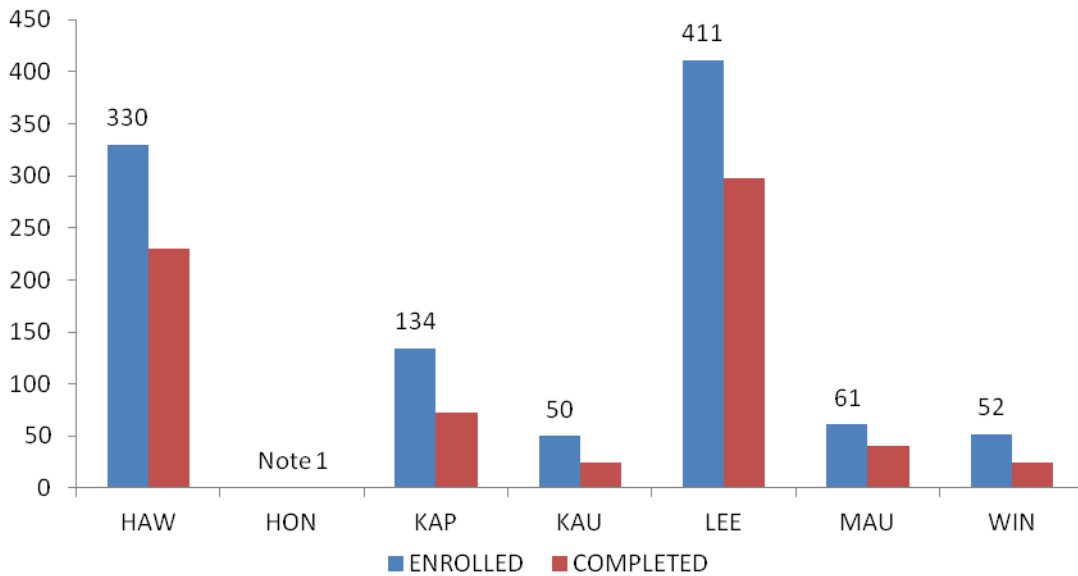
The following are measures of the Achieving the Dream Cohort students who enroll in any developmental course and successfully complete at least one developmental course within the first academic year.

**Figure 13 - Developmental Education Completion**



Source: AtD -- from UHCC Strategic Plan 2.3

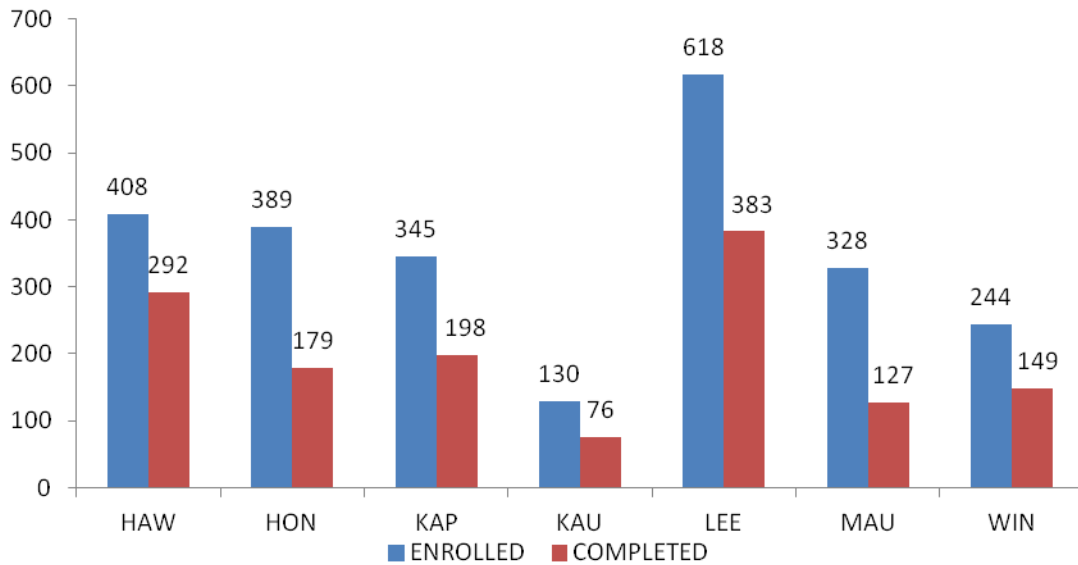
### Fall 2010 AtD Cohort Developmental Reading



Source: AtD — from UHCC Strategic Plan 2.3

Note 1: Developmental Reading not offered at Honolulu 2010-2011

### Fall 2010 AtD Cohort Developmental Math



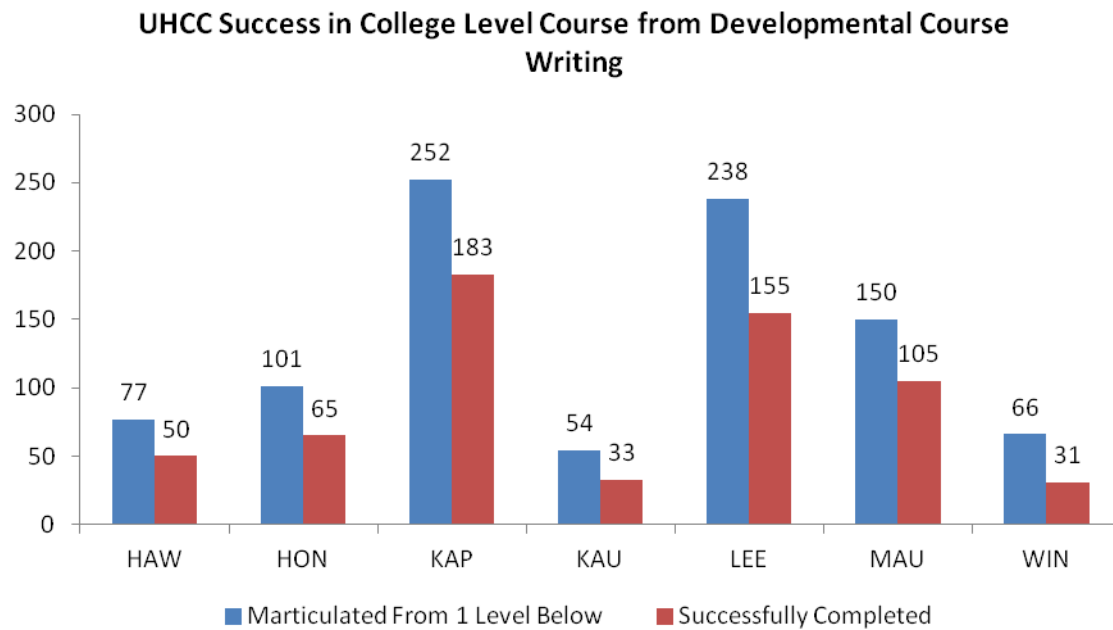
Source: AtD — from UHCC Strategic Plan 2.3

## DEVELOPMENTAL EDUCATION – SUCCESS IN THE NEXT COLLEGE LEVEL COURSE

The University of Hawaii Community College system is committed to increasing student success and progress towards degree applicable instruction.

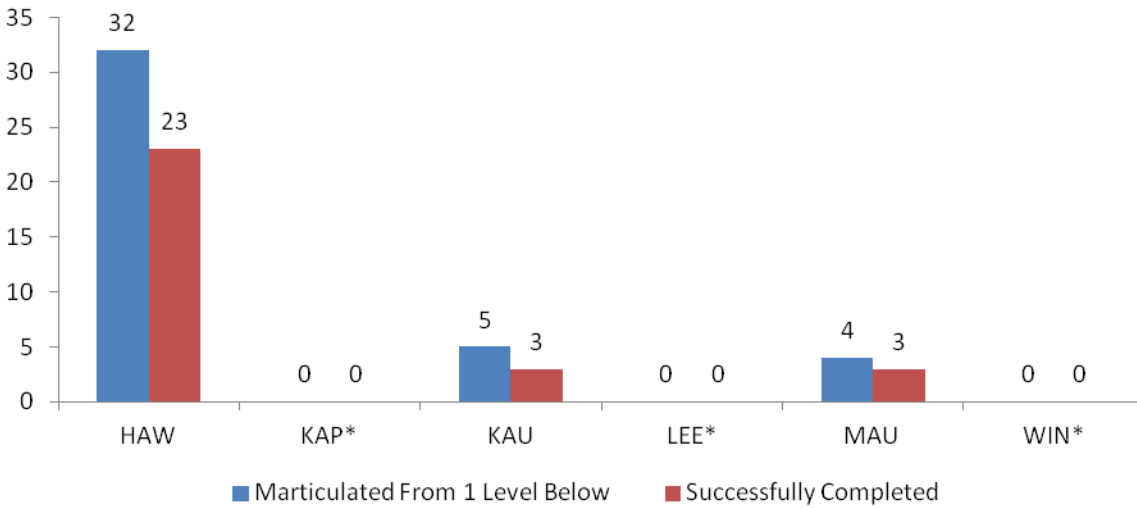
The following are measures of students who enroll in a developmental course one level below the college level course and successfully complete both courses within the academic year, fall to spring.

**Figure 13a - Success in Next Course**



Source: ODS AtD, Annual Reports of Program Data, IRO\_REGS

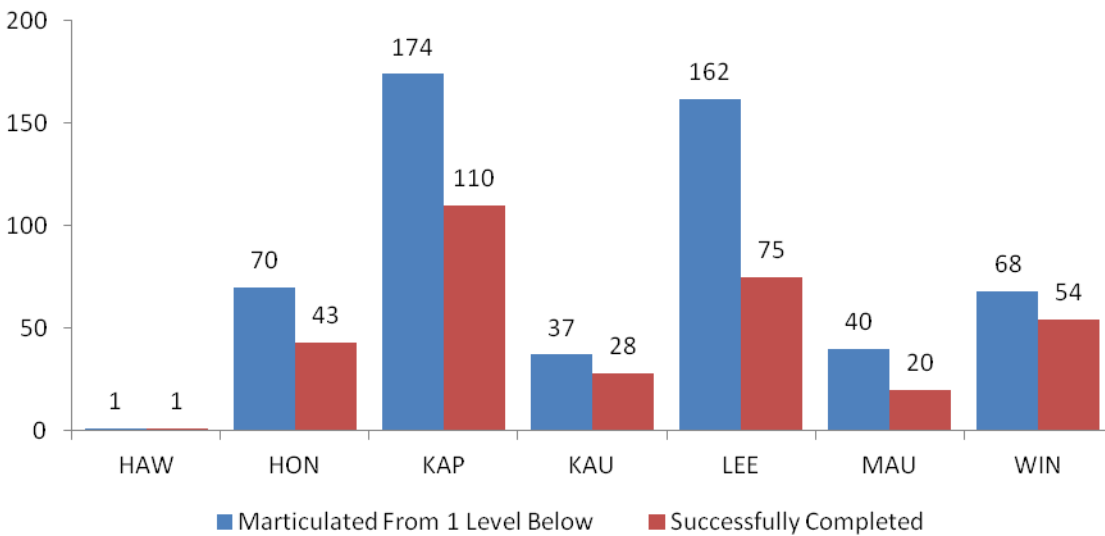
### UHCC Success in College Level Course from Developmental Course Reading



Source: ODS AtD, Annual Reports of Program Data, IRO\_REGS

\*Low numbers indicate college level reading courses may not be required and/or not offered in the spring (Chart does not include Honolulu, Developmental Reading not offered 2009-2010)

### UHCC Success in College Level Course from Developmental Course Math

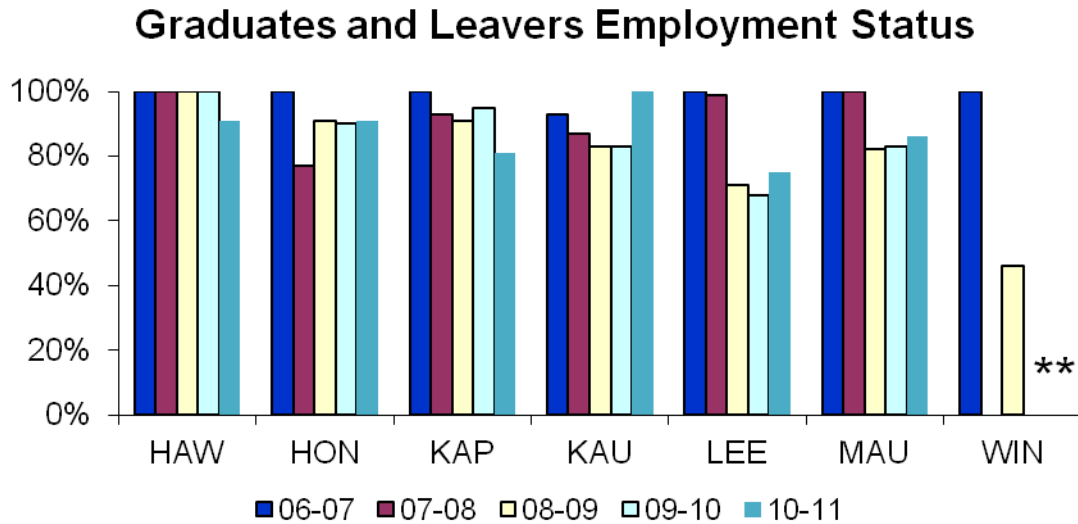


Source: ODS AtD, Annual Reports of Program Data, IRO\_REGS



## Job Placement and Preparation

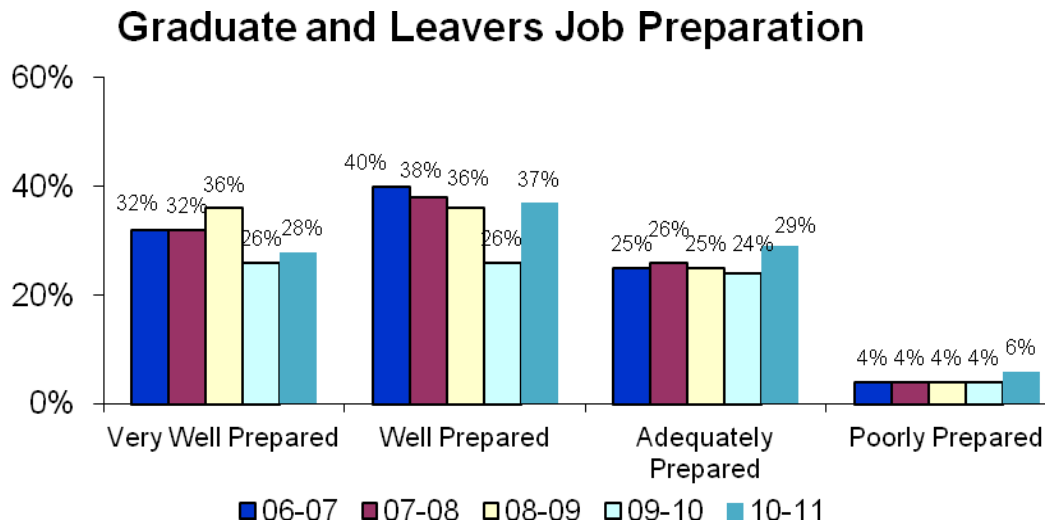
Figure 14 - Employment Status



Note: \* indicates no responses from CTE Graduates/Leavers

Source: UH Community Colleges campus Graduate and Leavers surveys

Figure 15 - Graduates and Leavers Job Preparation

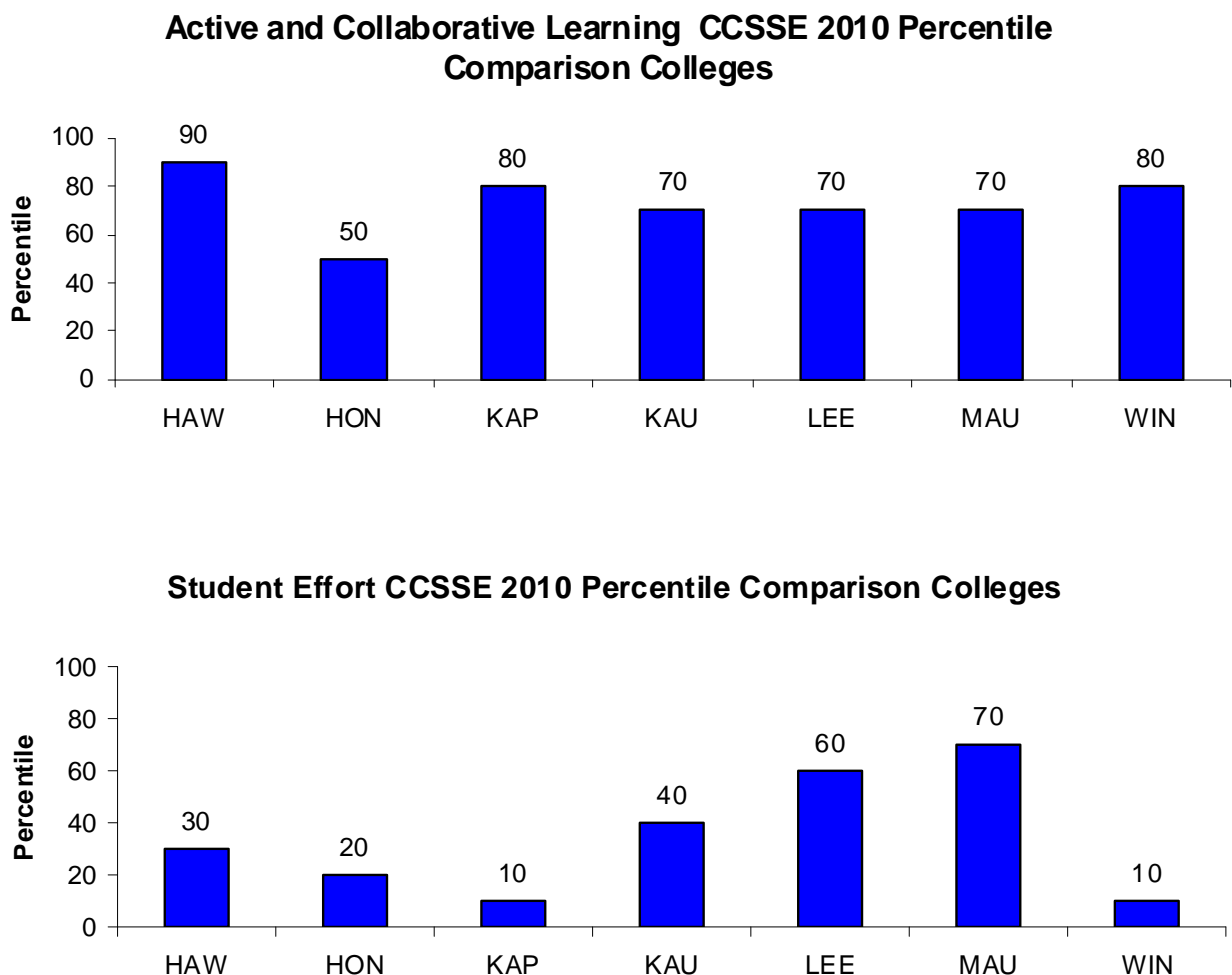


Source: UH Community Colleges campus Graduate and Leavers surveys

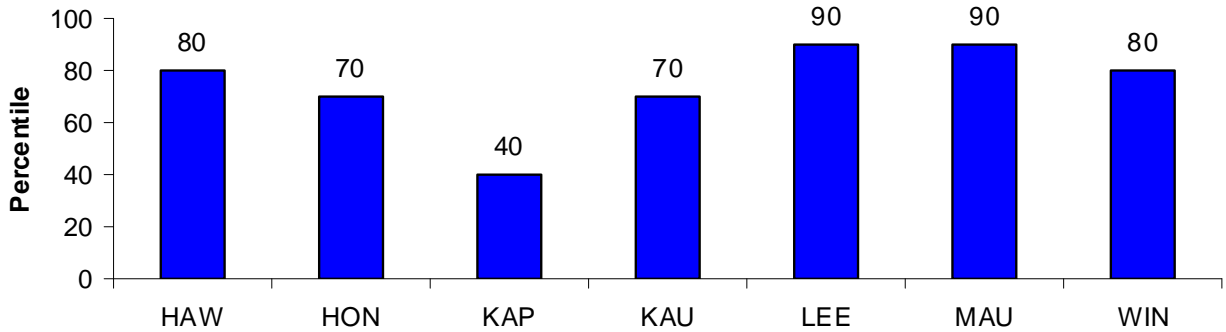
## STUDENT ENGAGEMENT

Research shows that the more actively engaged students are –with college faculty and staff, with other students, and with the subject matter they study – the more likely they are to learn and persist toward achieving their academic goals. Student engagement, therefore, is a valuable yardstick for assessing whether, and to what extent, an institution is employing educational practices likely to produce successful results. Scores are displayed in percentiles against all other Community College Survey Student Engagement (CCSSE) colleges surveyed of similar size. The UHCC system surveys in even numbered years.

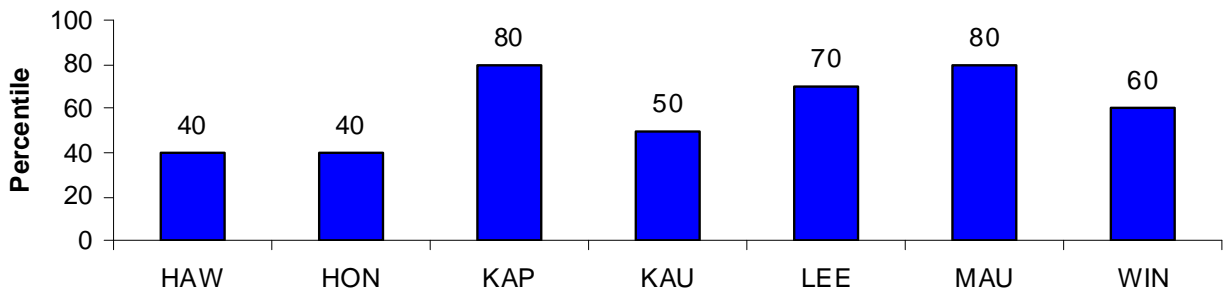
**Figure 16 - CSSE Benchmark Percentiles**



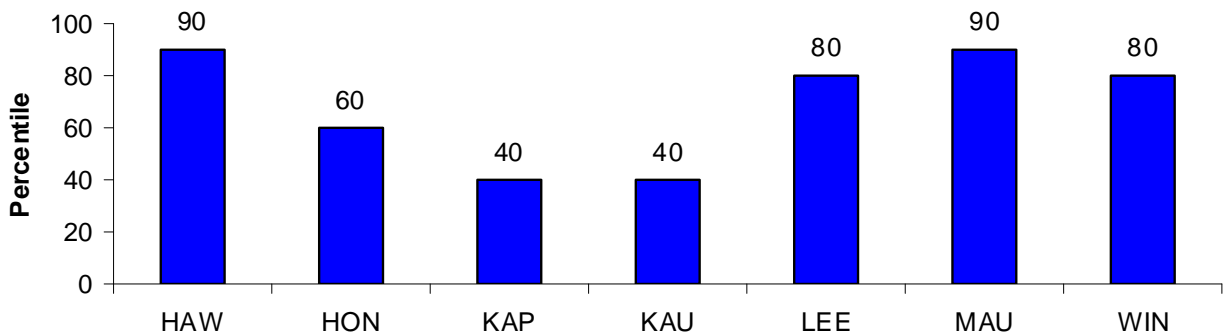
### Academic Challenge CCSSE 2010 Percentile Comparison Colleges



### Student-Faculty Interaction CCSSE 2010 Percentile Comparison Colleges



### Support for Learners CCSSE 2010 Percentile Comparison Colleges



Source: CCSSE 2010 National Report

**Appendix A - Figure 1: Historical Fall Headcount and Full-Time Equivalent (FTE) Enrollment Disaggregated Data**

## UHCC Fall Enrollment Full-Time Equivalent (FTE) Enrollment

	2007		2008		2009		2010		2011	
	Headcount	FTE	Headcount	FTE	Headcount	FTE	Headcount	FTE	Headcount	FTE
<b>Total</b>	25,890	14,913	28,444	16,296	32,203	18,491	34,203	19,759	34,100	19,432
<b>Age</b>										
Recent High School Graduates	3,190	2,357	3,810	2,777	3,944	2,842	3,705	2,649	3,584	2,591
Other< 22 Year Olds	10,030	6,424	10,903	6,855	12,203	7,673	12,771	8,102	12,440	7,651
22-24	4,056	2,163	4,358	2,316	5,047	2,723	5,399	2,870	5,405	2,847
25-49	7,660	3,633	8,367	3,984	9,935	4,837	11,099	5,624	11,344	5,780
>49	951	334	1,005	363	1,072	416	1,228	514	1,326	562
Age Not Reported	3	2	1	0	2	0	1	0	1	0
<b>Race/Ethnicity</b>										
American Indian or Alaska Native	104	64	131	72	147	82	142	82	143	85
Asian	11,487	6,703	12,297	7,102	13,264	7,634	13,007	7,552	12,579	7,173
Black or African American	293	173	308	175	388	225	508	285	499	293
Hispanic/Latino of Any Race	577	321	646	348	784	434	692	389	633	342
Native Hawaiian	5,122	2,994	5,960	3,540	7,175	4,252	9,374	5,577	9,709	5,618
Other Pacific Islander	794	464	906	522	1,032	594	892	512	824	491
White	3,887	2,071	4,293	2,280	5,008	2,702	5,407	2,952	5,312	2,868
Two or More Races	3,183	1,863	3,463	2,009	3,875	2,253	4,003	2,313	4,132	2,391
Unknown/Other	443	261	440	248	530	314	178	98	269	171
<b>Gender</b>										
Female	14,927	8,245	16,457	9,091	18,371	10,112	19,482	10,795	19,438	10,660
Male	10,884	6,613	11,885	7,138	13,667	8,274	14,472	8,806	14,411	8,608
Not Reported	79	56	102	67	165	106	249	158	251	164
<b>Socio Economic (Pell)</b>										
Received Pell	4,152	2,745	5,137	3,336	8,107	5,170	10,566	6,757	11,750	7,397
Did not receive Pell	21,738	12,168	23,307	12,960	24,096	13,322	23,637	13,003	22,350	12,035
<b>Distance Completely On-Line Courses (DCO)</b>										
Student Took 1 or More DCO	4,281	2,295	5,825	3,130	7,902	4,186	9,162	4,916	9,452	5,035
Student Took No DCO	21,609	12,619	22,619	13,166	24,301	14,305	25,041	14,843	24,648	14,397
<b>AtD Cohort</b>										
AtD Cohort Entering Year	*	*	*	*	*	*	*	*	*	*

Data Source:

ODS - IRAO Freeze Tables - IRO\_BASE, CENSUS

ODS - OVPCC Demographic Table - OVPCC\_DIAD\_SEMESTER: Table population is from IRO\_BASE with Pell and DCO groupings; MTT\_ACCOUNT\_DETAIL and IRO\_REGS

ODS - OVPCC Achieving the Dream Tables - OVPCC\_ATD\_COHORT

\*Not Applicable

## UHCC Fall Enrollment Full-Time Equivalent (FTE) Enrollment General and Pre-Professional Students

	2007		2008		2009		2010		2011	
	Headcount	FTE	Headcount	FTE	Headcount	FTE	Headcount	FTE	Headcount	FTE
<b>Total</b>	12,008	7,610	13,269	8,405	15,144	9,699	16,133	10,342	16,065	10,223
<b>Age</b>										
Recent High School Graduates	1,941	1,435	2,369	1,764	2,482	1,843	2,330	1,711	2,251	1,674
Other< 22 Year Olds	4,993	3,511	5,440	3,759	6,241	4,353	6,695	4,691	6,459	4,431
22-24	1,774	1,015	1,855	1,069	2,146	1,285	2,274	1,352	2,330	1,357
25-49	3,007	1,525	3,288	1,678	3,937	2,070	4,416	2,398	4,560	2,539
>49	293	123	317	135	338	148	418	189	465	222
Age Not Reported	0	0	0	0	0	0	0	0	0	0
<b>Race/Ethnicity</b>										
American Indian or Alaska Native	44	30	65	38	70	42	68	43	60	37
Asian	5,016	3,233	5,421	3,487	5,865	3,826	5,778	3,772	5,506	3,555
Black or African American	150	94	167	103	189	118	257	161	255	167
Hispanic/Latino of Any Race	301	180	318	194	416	253	366	225	319	192
Native Hawaiian	2,511	1,603	2,866	1,857	3,476	2,251	4,640	2,995	4,842	3,076
Other Pacific Islander	425	270	487	293	550	342	462	281	416	270
White	1,741	1,048	2,022	1,227	2,347	1,439	2,497	1,535	2,456	1,496
Two or More Races	1,614	1,015	1,742	1,095	1,981	1,263	1,983	1,279	2,075	1,342
Unknown/Other	206	137	181	111	250	166	82	49	136	88
<b>Gender</b>										
Female	7,268	4,503	7,986	4,982	8,947	5,621	9,546	6,009	9,500	5,946
Male	4,705	3,082	5,238	3,394	6,120	4,028	6,450	4,236	6,426	4,181
Not Reported	35	24	45	29	77	50	137	96	139	96
<b>Socio Economic (Pell)</b>										
Received Pell	2,388	1,646	2,877	1,979	4,413	3,009	5,627	3,861	6,213	4,223
Did not receive Pell	9,620	5,963	10,392	6,426	10,731	6,690	10,506	6,481	9,852	6,001
<b>Distance Completely On-Line Courses (DCO)</b>										
Student Took 1 or More DCO	1,760	1,125	2,442	1,576	3,281	2,130	3,916	2,558	4,152	2,692
Student Took No DCO	10,248	6,485	10,827	6,830	11,863	7,569	12,217	7,783	11,913	7,532
<b>AtD Cohort</b>										
AtD Cohort Entering Year	*	*	*	*	*	*	*	*	*	*

Data Source:

ODS - IRAO Freeze Tables - IRO\_BASE, CENSUS

ODS - OVPCC Demographic Table - OVPCC\_DIAD\_SEMESTER: Table population is from IRO\_BASE with Pell and DCO groupings; MTT\_ACCOUNT\_DETAIL and IRO\_REGS

ODS - OVPCC Achieving the Dream Tables - OVPCC\_ATD\_COHORT

\*Not Applicable

## UHCC Fall Enrollment Full-Time Equivalent (FTE) Enrollment Career and Technical Ed Students

	2007		2008		2009		2010		2011	
	Headcount	FTE	Headcount	FTE	Headcount	FTE	Headcount	FTE	Headcount	FTE
<b>Total</b>	7,393	4,863	7,979	5,273	9,025	5,948	9,908	6,640	10,013	6,563
<b>Age</b>										
Recent High School Graduates	905	713	1,051	812	1,116	839	1,052	796	1,054	787
Other< 22 Year Olds	2,491	1,819	2,599	1,909	2,856	2,079	3,063	2,239	2,981	2,116
22-24	1,110	717	1,160	759	1,368	882	1,458	954	1,540	985
25-49	2,611	1,493	2,863	1,658	3,319	1,971	3,891	2,420	3,975	2,433
>49	274	120	306	135	366	177	444	232	462	241
Age Not Reported	2	1	0	0	0	0	0	0	1	0
<b>Race/Ethnicity</b>										
American Indian or Alaska Native	31	22	36	24	50	32	50	33	56	41
Asian	3,451	2,287	3,536	2,362	3,713	2,466	3,793	2,565	3,754	2,474
Black or African American	71	52	83	55	118	79	145	93	142	94
Hispanic/Latino of Any Race	139	92	167	97	188	119	181	115	169	104
Native Hawaiian	1,543	1,016	1,843	1,242	2,260	1,511	2,881	1,968	2,982	1,951
Other Pacific Islander	211	137	269	170	294	184	308	195	300	189
White	1,001	621	1,025	639	1,249	794	1,480	958	1,423	923
Two or More Races	825	560	902	606	1,019	679	1,029	685	1,099	721
Unknown/Other	121	76	118	78	134	84	41	29	88	66
<b>Gender</b>										
Female	3,651	2,314	3,972	2,545	4,368	2,789	4,823	3,128	4,912	3,135
Male	3,710	2,525	3,965	2,696	4,601	3,114	5,028	3,471	5,032	3,380
Not Reported	32	24	42	32	56	45	57	42	69	48
<b>Socio Economic (Pell)</b>										
Received Pell	1,270	957	1,590	1,165	2,521	1,838	3,375	2,476	3,786	2,694
Did not receive Pell	6,123	3,907	6,389	4,108	6,504	4,110	6,533	4,165	6,227	3,869
<b>Distance Completely On-Line Courses (DCO)</b>										
Student Took 1 or More DCO	936	630	1,225	820	1,585	1,061	1,909	1,292	2,002	1,322
Student Took No DCO	6,457	4,234	6,754	4,453	7,440	4,887	7,999	5,349	8,011	5,241
<b>AtD Cohort</b>										
AtD Cohort Entering Year	*	*	*	*	*	*	*	*	*	*

Data Source:

ODS - IRAO Freeze Tables - IRO\_BASE, CENSUS

ODS - OVPCC Demographic Table - OVPCC\_DIAD\_SEMESTER: Table population is from IRO\_BASE with Pell and DCO groupings; MTT\_ACCOUNT\_DETAIL and IRO\_REGS

ODS - OVPCC Achieving the Dream Tables - OVPCC\_ATD\_COHORT

\*Not Applicable

## UHCC Fall Enrollment Full-Time Equivalent (FTE) Enrollment All Other Students

	2007		2008		2009		2010		2011	
	Headcount	FTE	Headcount	FTE	Headcount	FTE	Headcount	FTE	Headcount	FTE
<b>Total</b>	6,489	2,441	7,196	2,617	8,034	2,844	8,162	2,777	8,022	2,646
<b>Age</b>										
Recent High School Graduates	344	209	390	201	346	160	323	142	279	131
Other< 22 Year Olds	2,546	1,095	2,864	1,187	3,106	1,240	3,013	1,172	3,000	1,103
22-24	1,172	430	1,343	488	1,533	556	1,667	564	1,535	505
25-49	2,042	615	2,216	649	2,679	797	2,792	806	2,809	809
>49	384	91	382	93	368	91	366	93	399	99
Age Not Reported	1	0	1	0	2	0	1	0	0	0
<b>Race/Ethnicity</b>										
American Indian or Alaska Native	29	12	30	10	27	8	24	6	27	7
Asian	3,020	1,183	3,340	1,253	3,686	1,342	3,436	1,214	3,319	1,143
Black or African American	72	27	58	17	81	29	106	31	102	32
Hispanic/Latino of Any Race	137	50	161	57	180	62	145	49	145	46
Native Hawaiian	1,068	374	1,251	440	1,439	489	1,853	614	1,885	591
Other Pacific Islander	158	57	150	59	188	69	122	36	108	32
White	1,145	402	1,246	414	1,412	469	1,430	459	1,433	449
Two or More Races	744	289	819	309	875	311	991	349	958	328
Unknown/Other	116	47	141	59	146	64	55	19	45	16
<b>Gender</b>										
Female	4,008	1,427	4,499	1,563	5,056	1,701	5,113	1,658	5,026	1,579
Male	2,469	1,006	2,682	1,049	2,946	1,132	2,994	1,099	2,953	1,048
Not Reported	12	7	15	6	32	10	55	20	43	19
<b>Socio Economic (Pell)</b>										
Received Pell	494	142	670	191	1,173	322	1,564	421	1,751	481
Did not receive Pell	5,995	2,299	6,526	2,426	6,861	2,521	6,598	2,357	6,271	2,165
<b>Distance Completely On-Line Courses (DCO)</b>										
Student Took 1 or More DCO	1,585	540	2,158	734	3,036	995	3,337	1,066	3,298	1,021
Student Took No DCO	4,904	1,900	5,038	1,883	4,998	1,849	4,825	1,711	4,724	1,625
<b>AtD Cohort</b>										
AtD Cohort Entering Year	*	*	*	*	*	*	*	*	*	*

Data Source:

ODS - IRAO Freeze Tables - IRO\_BASE, CENSUS

ODS - OVPCC Demographic Table - OVPCC\_DIAD\_SEMESTER: Table population is from IRO\_BASE with Pell and DCO groupings; MTT\_ACCOUNT\_DETAIL and IRO\_REGS

ODS - OVPCC Achieving the Dream Tables - OVPCC\_ATD\_COHORT

\*Not Applicable



## UHCC Fall Enrollment All Students Full-time and Part-time

	2007		2008		2009		2010		2011	
<b>Total</b>	25,890		28,444		32,203		34,203		34,100	
	FT	PT	FT	PT	FT	PT	FT	PT	FT	PT
<b>Age</b>										
Recent High School Graduates	2,348	842	2,825	985	2,914	1,030	2,696	1,009	2,559	1,025
Other< 22 Year Olds	6,227	3,803	6,667	4,236	7,742	4,461	8,066	4,705	7,273	5,167
22-24	1,748	2,308	1,964	2,394	2,376	2,671	2,532	2,867	2,496	2,909
25-49	2,188	5,472	2,432	5,935	3,312	6,623	3,944	7,155	4,221	7,123
>49	128	823	133	872	188	884	266	962	287	1,039
Age Not Reported	1	2	0	1	0	2	0	1	0	1
<b>Race/Ethnicity</b>										
American Indian or Alaska Native	57	47	64	67	65	82	74	68	67	76
Asian	5,840	5,647	6,290	6,007	7,002	6,262	6,888	6,119	6,307	6,272
Black or African American	145	148	141	167	197	191	228	280	262	237
Hispanic/Latino of Any Race	251	326	293	353	365	419	303	389	276	357
Native Hawaiian	2,548	2,574	3,129	2,831	3,937	3,238	5,046	4,328	4,918	4,791
Other Pacific Islander	376	418	414	492	498	534	415	477	401	423
White	1,624	2,263	1,757	2,536	2,201	2,807	2,377	3,030	2,338	2,974
Two or More Races	1,593	1,590	1,740	1,723	1,995	1,880	2,096	1,907	2,113	2,019
Unknown/Other	206	237	193	247	272	258	77	101	154	115
<b>Gender</b>										
Female	6,895	8,032	7,795	8,662	9,125	9,246	9,696	9,786	9,305	10,133
Male	5,694	5,190	6,163	5,722	7,322	6,345	7,665	6,807	7,387	7,024
Not Reported	51	28	63	39	85	80	143	106	144	107
<b>Socio Economic (Pell)</b>										
Received Pell	2,621	1,531	3,213	1,924	5,163	2,944	6,654	3,912	7,164	4,586
Did not receive Pell	10,019	11,719	10,808	12,499	11,369	12,727	10,850	12,787	9,672	12,678
<b>Distance Completely On-Line Courses (DCO)</b>										
Student Took 1 or More DCO	2,247	2,034	3,123	2,702	4,419	3,483	5,090	4,072	5,008	4,444
Student Took No DCO	10,393	11,216	10,898	11,721	12,113	12,188	12,414	12,627	11,828	12,820
<b>AtD Cohort</b>										
AtD Cohort Entering Year	*	*	*	*	*	*	*	*	*	*

Data Source:

ODS - IRAO Freeze Tables - IRO\_BASE, CENSUS

ODS - OVPCC Demographic Table - OVPCC\_DIAD\_SEMESTER: Table population is from IRO\_BASE with Pell and DCO groupings, MTT\_ACCOUNT\_DETAIL and IRO\_REGS

ODS - OVPCC Achieving the Dream Tables - OVPCC\_ATD\_COHORT

\*Not Applicable

**UHCC Fall Enrollment All Students  
Full-time and Part-time  
General and Pre-Professional Students**

	<b>2007</b>		<b>2008</b>		<b>2009</b>		<b>2010</b>		<b>2011</b>	
<b>Total</b>	12,008		13,269		15,144		16,133		16,065	
	FT	PT	FT	PT	FT	PT	FT	PT	FT	PT
<b>Age</b>										
Recent High School Graduates	1,416	525	1,760	609	1,853	629	1,685	645	1,600	651
Other< 22 Year Olds	3,176	1,817	3,396	2,044	4,001	2,240	4,269	2,426	3,812	2,647
22-24	681	1,093	745	1,110	925	1,221	1,000	1,274	933	1,397
25-49	845	2,162	954	2,334	1,253	2,684	1,473	2,943	1,650	2,910
>49	47	246	53	264	64	274	84	334	106	359
Age Not Reported	0	0	0	0	0	0	0	0	0	0
<b>Race/Ethnicity</b>										
American Indian or Alaska Native	24	20	33	32	32	38	34	34	27	33
Asian	2,709	2,307	2,936	2,485	3,285	2,580	3,192	2,586	2,839	2,667
Black or African American	70	80	81	86	95	94	120	137	136	119
Hispanic/Latino of Any Race	127	174	157	161	197	219	168	198	148	171
Native Hawaiian	1,309	1,202	1,576	1,290	1,962	1,514	2,549	2,091	2,471	2,371
Other Pacific Islander	210	215	224	263	269	281	211	251	220	196
White	788	953	898	1,124	1,072	1,275	1,144	1,353	1,103	1,353
Two or More Races	814	800	913	829	1,042	939	1,054	929	1,082	993
Unknown/Other	114	92	90	91	142	108	39	43	75	61
<b>Gender</b>										
Female	3,562	3,706	4,047	3,939	4,638	4,309	4,923	4,623	4,626	4,874
Male	2,579	2,126	2,835	2,403	3,419	2,701	3,500	2,950	3,389	3,037
Not Reported	24	11	26	19	39	38	88	49	86	53
<b>Socio Economic (Pell)</b>										
Received Pell	1,413	975	1,751	1,126	2,685	1,728	3,371	2,256	3,590	2,623
Did not receive Pell	4,752	4,868	5,157	5,235	5,411	5,320	5,140	5,366	4,511	5,341
<b>Distance Completely On-Line Courses (DCO)</b>										
Student Took 1 or More DCO	924	836	1,333	1,109	1,819	1,462	2,216	1,700	2,208	1,944
Student Took No DCO	5,241	5,007	5,575	5,252	6,277	5,586	6,295	5,922	5,893	6,020
<b>AtD Cohort</b>										
AtD Cohort Entering Year	*	*	*	*	*	*	*	*	*	*

Data Source:

ODS - IRAO Freeze Tables - IRO\_BASE, CENSUS

ODS - OVPCC Demographic Table - OVPCC\_DIAD\_SEMESTER: Table population is from IRO\_BASE with Pell and DCO groupings, MTT\_ACCOUNT\_DETAIL and IRO\_REGS

ODS - OVPCC Achieving the Dream Tables - OVPCC\_ATD\_COHORT

\*Not Applicable

## UHCC Fall Enrollment All Students Full-time and Part-time Career and Technical Ed Students

	2007		2008		2009		2010		2011	
<b>Total</b>	7,393		7,979		9,025		9,908		10,013	
	FT	PT	FT	PT	FT	PT	FT	PT	FT	PT
<b>Age</b>										
Recent High School Graduates	686	219	771	280	789	327	745	307	725	329
Other < 22 Year Olds	1,623	868	1,693	906	1,849	1,007	1,976	1,087	1,761	1,220
22-24	509	601	551	609	646	722	701	757	703	837
25-49	832	1,779	893	1,970	1,223	2,096	1,531	2,360	1,576	2,399
>49	54	220	58	248	97	269	138	306	132	330
Age Not Reported	1	1	0	0	0	0	0	0	0	1
<b>Race/Ethnicity</b>										
American Indian or Alaska Native	18	13	18	18	26	24	26	24	34	22
Asian	1,752	1,699	1,797	1,739	1,891	1,822	1,963	1,830	1,813	1,941
Black or African American	43	28	38	45	58	60	64	81	76	66
Hispanic/Latino of Any Race	71	68	67	100	89	99	79	102	67	102
Native Hawaiian	784	759	986	857	1,219	1,041	1,576	1,305	1,506	1,476
Other Pacific Islander	101	110	124	145	134	160	149	159	136	164
White	436	565	416	609	582	667	676	804	661	762
Two or More Races	446	379	462	440	539	480	535	494	545	554
Unknown/Other	54	67	58	60	66	68	23	18	59	29
<b>Gender</b>										
Female	1,680	1,971	1,835	2,137	2,120	2,248	2,332	2,491	2,276	2,636
Male	2,004	1,706	2,104	1,861	2,444	2,157	2,721	2,307	2,582	2,450
Not Reported	21	11	27	15	40	16	38	19	39	30
<b>Socio Economic (Pell)</b>										
Received Pell	845	425	968	622	1,596	925	2,131	1,244	2,269	1,517
Did not receive Pell	2,860	3,263	2,998	3,391	3,008	3,496	2,960	3,573	2,628	3,599
<b>Distance Completely On-Line Courses (DCO)</b>										
Student Took 1 or More DCO	509	427	650	575	897	688	1,097	812	1,041	961
Student Took No DCO	3,196	3,261	3,316	3,438	3,707	3,733	3,994	4,005	3,856	4,155
<b>AtD Cohort</b>										
AtD Cohort Entering Year	*	*	*	*	*	*	*	*	*	*

Data Source:

ODS - IRAO Freeze Tables - IRO\_BASE, CENSUS

ODS - OVPCC Demographic Table - OVPCC\_DIAD\_SEMESTER: Table population is from IRO\_BASE with Pell and DCO groupings, MTT\_ACCOUNT\_DETAIL and IRO\_REGS

ODS - OVPCC Achieving the Dream Tables - OVPCC\_ATD\_COHORT

\*Not Applicable

## UHCC Fall Enrollment All Students Full-time and Part-time All Other Students

	2007		2008		2009		2010		2011	
<b>Total</b>	6,489		7,196		8,034		8,162		8,022	
	FT	PT	FT	PT	FT	PT	FT	PT	FT	PT
<b>Age</b>										
Recent High School Graduates	246	98	294	96	272	74	266	57	234	45
Other< 22 Year Olds	1,428	1,118	1,578	1,286	1,892	1,214	1,821	1,192	1,700	1,300
22-24	558	614	668	675	805	728	831	836	860	675
25-49	511	1,531	585	1,631	836	1,843	940	1,852	995	1,814
>49	27	357	22	360	27	341	44	322	49	350
Age Not Reported	0	1	0	1	0	2	0	1	0	0
<b>Race/Ethnicity</b>										
American Indian or Alaska Native	15	14	13	17	7	20	14	10	6	21
Asian	1,379	1,641	1,557	1,783	1,826	1,860	1,733	1,703	1,655	1,664
Black or African American	32	40	22	36	44	37	44	62	50	52
Hispanic/Latino of Any Race	53	84	69	92	79	101	56	89	61	84
Native Hawaiian	455	613	567	684	756	683	921	932	941	944
Other Pacific Islander	65	93	66	84	95	93	55	67	45	63
White	400	745	443	803	547	865	557	873	574	859
Two or More Races	333	411	365	454	414	461	507	484	486	472
Unknown/Other	38	78	45	96	64	82	15	40	20	25
<b>Gender</b>										
Female	1,653	2,355	1,913	2,586	2,367	2,689	2,441	2,672	2,403	2,623
Male	1,111	1,358	1,224	1,458	1,459	1,487	1,444	1,550	1,416	1,537
Not Reported	6	6	10	5	6	26	17	38	19	24
<b>Socio Economic (Pell)</b>										
Received Pell	363	131	494	176	882	291	1,152	412	1,305	446
Did not receive Pell	2,407	3,588	2,653	3,873	2,950	3,911	2,750	3,848	2,533	3,738
<b>Distance Completely On-Line Courses (DCO)</b>										
Student Took 1 or More DCO	814	771	1,140	1,018	1,703	1,333	1,777	1,560	1,759	1,539
Student Took No DCO	1,956	2,948	2,007	3,031	2,129	2,869	2,125	2,700	2,079	2,645
<b>AtD Cohort</b>										
AtD Cohort Entering Year	*	*	*	*	*	*	*	*	*	*

Data Source:

ODS - IRAO Freeze Tables - IRO\_BASE, CENSUS

ODS - OVPCC Demographic Table - OVPCC\_DIAD\_SEMESTER: Table population is from IRO\_BASE with Pell and DCO groupings, MTT\_ACCOUNT\_DETAIL and IRO\_REGS

ODS - OVPCC Achieving the Dream Tables - OVPCC\_ATD\_COHORT

\*Not Applicable

## **Appendix B - Figure 9: Retention Disaggregated Data**

## UHCC Fall Retention

	2007	2008	2009	2010	2011
<b>Total</b>	91.09%	91.81%	93.15%	93.66%	94.13%
<b>Age</b>					
Recent High School Graduates	92.10%	93.43%	93.96%	95.07%	95.61%
Other < 22 Year Olds	89.88%	90.73%	92.89%	93.10%	93.58%
22-24	90.11%	90.05%	91.46%	92.54%	92.85%
25-49	92.84%	93.24%	93.90%	94.27%	94.73%
>49	93.76%	94.29%	94.13%	94.54%	95.01%
Age Not Reported	100.00%	100.00%	50.00%	100.00%	100.00%
<b>Race/Ethnicity</b>					
American Indian or Alaska Native	90.61%	92.37%	92.92%	95.25%	97.26%
Asian	90.85%	91.61%	92.61%	93.60%	93.79%
Black or African American	90.27%	91.84%	92.62%	92.91%	94.40%
Hispanic/Latino of Any Race	90.97%	92.94%	93.77%	93.68%	94.05%
Native Hawaiian	91.47%	92.36%	93.92%	93.60%	94.22%
Other Pacific Islander	89.29%	90.48%	94.07%	94.06%	92.85%
White	92.82%	92.80%	93.59%	94.41%	94.99%
Two or More Races	90.08%	90.47%	92.51%	92.95%	93.81%
Unknown/Other	90.54%	92.34%	94.02%	94.70%	96.84%
<b>Gender</b>					
Female	91.78%	92.30%	93.47%	93.95%	94.43%
Male	90.23%	91.18%	92.76%	93.32%	93.76%
Not Reported	90.61%	91.34%	92.96%	93.17%	93.18%
<b>Socio Economic (Pell)</b>					
Received Pell	93.63%	93.93%	94.75%	94.86%	95.20%
Did not receive Pell	90.52%	91.25%	92.52%	93.03%	93.46%
<b>Distance Completely On-Line Courses (DCO)</b>					
Student Took 1 or More DCO	89.47%	89.18%	91.71%	91.87%	92.27%
Student Took No DCO	91.39%	92.45%	93.58%	94.27%	94.81%
<b>AtD Cohort</b>					
AtD Cohort Entering Year	92.23%	92.96%	94.06%	94.85%	

Defintion:

Retention refers to those students who are enrolled in a course at the fall census date and who do not drop or withdraw before the end of the semester. Within the University of Hawai'i Community College System, this has also been called Course Completion Rate.

Data Source:

ODS - IRAO Freeze Tables - IRO\_BASE, CENSUS

ODS - OVPCD Demographic Table - OVPCD\_DIAD\_SEMESTER: Table population is from IRO\_BASE with Pell and DCO groupings; MTT\_ACCOUNT\_DETAIL and IRO\_REGS

ODS - OVPCD Achieving the Dream Tables - OVPCD\_ATD\_COHORT

## UHCC Fall Retention General and Pre-Professional Students

	2007	2008	2009	2010	2011
<b>Total</b>	90.10%	90.68%	92.38%	93.12%	93.71%
<b>Age</b>					
Recent High School Graduates	90.84%	92.49%	93.59%	94.67%	95.23%
Other < 22 Year Olds	89.36%	89.76%	92.23%	92.65%	93.14%
22-24	89.30%	88.90%	90.12%	92.09%	92.62%
25-49	91.38%	91.88%	92.95%	93.54%	94.33%
>49	92.33%	91.47%	93.39%	92.64%	93.58%
Age Not Reported	0.00%	0.00%	0.00%	0.00%	0.00%
<b>Race/Ethnicity</b>					
American Indian or Alaska Native	92.47%	91.28%	92.52%	94.39%	98.40%
Asian	89.78%	90.22%	91.54%	92.98%	93.34%
Black or African American	90.49%	89.85%	92.09%	91.46%	95.51%
Hispanic/Latino of Any Race	91.36%	93.32%	94.56%	93.18%	94.76%
Native Hawaiian	90.30%	91.09%	93.40%	93.17%	93.78%
Other Pacific Islander	87.18%	90.35%	92.99%	93.16%	92.18%
White	92.31%	92.04%	92.96%	93.91%	94.44%
Two or More Races	89.06%	89.62%	91.93%	92.65%	93.41%
Unknown/Other	89.18%	90.70%	91.68%	91.60%	95.60%
<b>Gender</b>					
Female	91.06%	91.26%	92.85%	93.70%	94.11%
Male	88.66%	89.83%	91.68%	92.30%	93.15%
Not Reported	90.16%	91.30%	95.44%	92.89%	93.18%
<b>Socio Economic (Pell)</b>					
Received Pell	92.87%	93.01%	94.07%	94.54%	94.85%
Did not receive Pell	89.32%	89.96%	91.62%	92.26%	92.91%
<b>Distance Completely On-Line Courses (DCO)</b>					
Student Took 1 or More DCO	89.69%	88.34%	91.54%	91.58%	92.68%
Student Took No DCO	90.17%	91.23%	92.62%	93.64%	94.09%
<b>AtD Cohort</b>					
AtD Cohort Entering Year	90.98%	91.72%	93.35%	94.33%	

Defintion:

Retention refers to those students who are enrolled in a course at the fall census date and who do not drop or withdraw before the end of the semester. Within the University of Hawai'i Community College System, this has also been called Course Completion Rate.

Data Source:

ODS - IRAO Freeze Tables - IRO\_BASE, CENSUS

ODS - OVPCC Demographic Table - OVPCC\_DIAD\_SEMESTER: Table population is from IRO\_BASE with Pell and DCO groupings; MTT\_ACCOUNT\_DETAIL and IRO\_REGS

ODS - OVPCC Achieving the Dream Tables - OVPCC\_ATD\_COHORT

## UHCC Fall Retention Career and Technical Ed Students

	2007	2008	2009	2010	2011
<b>Total</b>	94.15%	94.73%	95.39%	95.44%	95.76%
<b>Age</b>					
Recent High School Graduates	94.91%	95.78%	94.90%	96.16%	96.64%
Other< 22 Year Olds	92.77%	93.22%	95.52%	95.06%	95.25%
22-24	94.24%	94.47%	95.09%	94.60%	94.86%
25-49	95.29%	95.83%	95.75%	95.78%	96.25%
>49	94.70%	95.73%	94.09%	96.19%	95.93%
Age Not Reported	100.00%	0.00%	0.00%	0.00%	100.00%
<b>Race/Ethnicity</b>					
American Indian or Alaska Native	87.60%	94.53%	92.35%	95.40%	97.64%
Asian	94.58%	95.00%	95.65%	96.02%	96.02%
Black or African American	92.28%	95.89%	93.15%	95.57%	94.40%
Hispanic/Latino of Any Race	92.66%	93.80%	93.72%	96.12%	93.95%
Native Hawaiian	94.26%	94.99%	95.55%	94.90%	95.37%
Other Pacific Islander	94.66%	91.26%	95.84%	95.40%	95.28%
White	94.05%	95.17%	95.26%	95.73%	96.02%
Two or More Races	92.81%	93.64%	94.59%	94.33%	95.93%
Unknown/Other	94.71%	94.90%	97.20%	98.60%	98.06%
<b>Gender</b>					
Female	94.56%	95.21%	95.56%	95.33%	95.86%
Male	93.73%	94.26%	95.29%	95.54%	95.65%
Not Reported	96.03%	94.67%	92.00%	96.14%	96.83%
<b>Socio Economic (Pell)</b>					
Received Pell	94.96%	95.83%	96.06%	95.68%	95.97%
Did not receive Pell	93.94%	94.40%	95.08%	95.29%	95.61%
<b>Distance Completely On-Line Courses (DCO)</b>					
Student Took 1 or More DCO	91.32%	92.54%	93.33%	93.66%	93.34%
Student Took No DCO	94.57%	95.14%	95.85%	95.89%	96.41%
<b>AtD Cohort</b>					
AtD Cohort Entering Year	94.35%	95.15%	95.30%	95.67%	

Defintion:

Retention refers to those students who are enrolled in a course at the fall census date and who do not drop or withdraw before the end of the semester. Within the University of Hawai'i Community College System, this has also been called Course Completion Rate.

Data Source:

ODS - IRAO Freeze Tables - IRO\_BASE, CENSUS

ODS - OVPCC Demographic Table - OVPCC\_DIAD\_SEMESTER: Table population is from IRO\_BASE with Pell and DCO groupings; MTT\_ACCOUNT\_DETAIL and IRO\_REGS

ODS - OVPCC Achieving the Dream Tables - OVPCC\_ATD\_COHORT



## UHCC Fall Retention All Other Students

	2007	2008	2009	2010	2011
<b>Total</b>	88.20%	89.63%	91.12%	91.54%	91.85%
<b>Age</b>					
Recent High School Graduates	90.00%	90.86%	92.69%	93.31%	93.92%
Other < 22 Year Olds	86.82%	89.95%	90.96%	91.27%	92.30%
22-24	85.58%	86.10%	89.06%	90.35%	89.72%
25-49	90.77%	90.36%	91.98%	92.12%	91.71%
>49	94.38%	96.18%	95.40%	94.19%	96.08%
Age Not Reported	100.00%	100.00%	50.00%	100.00%	0.00%
<b>Race/Ethnicity</b>					
American Indian or Alaska Native	92.06%	91.23%	97.50%	100.00%	89.74%
Asian	86.78%	89.32%	90.26%	90.70%	90.69%
Black or African American	85.92%	90.32%	93.29%	92.44%	88.89%
Hispanic/Latino of Any Race	86.49%	90.17%	90.74%	90.48%	91.39%
Native Hawaiian	88.64%	89.94%	91.16%	91.49%	92.71%
Other Pacific Islander	86.14%	88.85%	94.69%	93.75%	84.34%
White	92.31%	91.52%	92.69%	93.38%	94.80%
Two or More Races	88.44%	87.38%	90.33%	91.46%	91.08%
Unknown/Other	87.60%	91.92%	95.99%	96.94%	98.75%
<b>Gender</b>					
Female	89.55%	90.93%	92.08%	92.27%	92.83%
Male	86.39%	87.78%	89.73%	90.48%	90.48%
Not Reported	69.44%	71.43%	84.62%	88.68%	85.15%
<b>Socio Economic (Pell)</b>					
Received Pell	93.32%	91.57%	93.50%	92.90%	93.95%
Did not receive Pell	87.89%	89.48%	90.81%	91.30%	91.38%
<b>Distance Completely On-Line Courses (DCO)</b>					
Student Took 1 or More DCO	86.93%	87.22%	90.34%	90.45%	89.85%
Student Took No DCO	88.57%	90.59%	91.55%	92.23%	93.14%
<b>AtD Cohort</b>					
AtD Cohort Entering Year	*	*	*	*	*

Defintion:

Retention refers to those students who are enrolled in a course at the fall census date and who do not drop or withdraw before the end of the semester. Within the University of Hawai'i Community College System, this has also been called Course Completion Rate.

Data Source:

ODS - IRAO Freeze Tables - IRO\_BASE, CENSUS

ODS - OVPCC Demographic Table - OVPCC\_DIAD\_SEMESTER: Table population is from IRO\_BASE with Pell and DCO groupings; MTT\_ACCOUNT\_DETAIL and IRO\_REGS

ODS - OVPCC Achieving the Dream Tables - OVPCC\_ATD\_COHORT

\*Not Applicable

## **Appendix C - Figure 10: Persistence Disaggregated Data**

## UHCC Persistence Fall to Spring

	2007	2008	2009	2010	2011
<b>Total</b>	68.65%	69.48%	71.42%	70.85%	70.93%
<b>Age</b>					
Recent High School Graduates	76.79%	78.90%	79.97%	80.28%	82.29%
Other< 22 Year Olds	70.01%	69.56%	71.44%	71.08%	70.58%
22-24	63.43%	66.12%	67.15%	65.86%	66.27%
25-49	66.24%	66.32%	69.94%	69.45%	68.83%
>49	63.31%	67.82%	67.73%	68.92%	74.25%
Age Not Reported	66.67%	0.00%	0.00%	100.00%	100.00%
<b>Race/Ethnicity</b>					
American Indian or Alaska Native	72.29%	60.55%	66.41%	66.39%	76.00%
Asian	71.44%	72.09%	72.90%	73.09%	73.46%
Black or African American	60.08%	63.33%	73.13%	65.51%	67.94%
Hispanic/Latino of Any Race	61.95%	63.95%	68.01%	69.87%	63.74%
Native Hawaiian	67.19%	68.34%	71.60%	70.29%	70.08%
Other Pacific Islander	65.82%	62.44%	65.97%	64.43%	63.80%
White	64.81%	67.92%	69.55%	68.72%	69.28%
Two or More Races	68.71%	68.39%	70.87%	70.76%	70.36%
Unknown/Other	67.25%	68.96%	71.46%	67.31%	73.31%
<b>Gender</b>					
Female	69.45%	69.79%	72.22%	71.26%	71.46%
Male	67.53%	69.01%	70.41%	70.31%	70.33%
Not Reported	78.08%	76.09%	72.08%	72.29%	67.53%
<b>Socio Economic (Pell)</b>					
Received Pell	80.62%	81.70%	83.05%	82.35%	80.11%
Did not receive Pell	66.25%	66.64%	67.32%	65.47%	65.86%
<b>Distance Completely On-Line Courses (DCO)</b>					
Student Took 1 or More DCO	68.64%	67.52%	70.23%	70.22%	68.51%
Student Took No DCO	68.65%	69.89%	71.72%	71.04%	71.68%
<b>AtD Cohort</b>					
AtD Cohort Entering Year	70.66%	72.45%	73.74%	73.16%	

Data Source:

ODS - IRAO Freeze Tables - IRO\_BASE, CENSUS

ODS - OVPCC Demographic Table - OVPCC\_DIAD\_SEMESTER: Table population is from IRO\_BASE with Pell and DCO groupings; MTT\_ACCOUNT\_DETAIL and IRO\_REGS

ODS - OVPCC Achieving the Dream Tables - OVPCC\_ATD\_COHORT

## UHCC Persistence Fall to Spring General and Pre-Professional Students

	2007	2008	2009	2010	2011
<b>Total</b>	69.20%	69.64%	72.55%	71.39%	71.31%
<b>Age</b>					
Recent High School Graduates	77.59%	79.82%	82.03%	81.07%	83.47%
Other< 22 Year Olds	70.10%	69.56%	72.20%	71.32%	70.89%
22-24	61.44%	63.40%	66.73%	65.22%	64.16%
25-49	67.38%	65.91%	70.38%	69.57%	69.32%
>49	64.16%	70.35%	71.60%	71.29%	73.55%
Age Not Reported	0.00%	0.00%	0.00%	0.00%	0.00%
<b>Race/Ethnicity</b>					
American Indian or Alaska Native	77.27%	58.46%	67.14%	66.18%	76.67%
Asian	72.07%	71.96%	74.31%	73.61%	74.32%
Black or African American	60.67%	64.67%	75.13%	67.70%	63.53%
Hispanic/Latino of Any Race	60.47%	66.67%	69.71%	68.58%	62.70%
Native Hawaiian	68.98%	69.40%	73.10%	70.65%	70.07%
Other Pacific Islander	64.71%	59.55%	65.09%	65.37%	64.42%
White	65.42%	69.09%	70.43%	69.48%	70.28%
Two or More Races	68.84%	67.62%	71.68%	71.76%	70.75%
Unknown/Other	63.59%	70.72%	71.20%	68.29%	74.26%
<b>Gender</b>					
Female	70.06%	70.11%	73.85%	72.11%	71.76%
Male	67.84%	68.90%	70.74%	70.20%	70.73%
Not Reported	74.29%	73.33%	66.23%	76.64%	67.63%
<b>Socio Economic (Pell)</b>					
Received Pell	79.56%	79.42%	82.53%	81.36%	79.35%
Did not receive Pell	66.63%	66.94%	68.45%	66.05%	66.24%
<b>Distance Completely On-Line Courses (DCO)</b>					
Student Took 1 or More DCO	68.92%	66.95%	70.19%	70.17%	68.14%
Student Took No DCO	69.25%	70.25%	73.20%	71.78%	72.42%
<b>AtD Cohort</b>					
AtD Cohort Entering Year	70.90%	72.80%	74.72%	73.86%	

Data Source:

ODS - IRAO Freeze Tables - IRO\_BASE, CENSUS

ODS - OVPCC Demographic Table - OVPCC\_DIAD\_SEMESTER: Table population is from IRO\_BASE with Pell and DCO groupings; MTT\_ACCOUNT\_DETAIL and IRO\_REGS

ODS - OVPCC Achieving the Dream Tables - OVPCC\_ATD\_COHORT

## UHCC Persistence Fall to Spring Career and Technical Ed Students

	2007	2008	2009	2010	2011
<b>Total</b>	71.91%	73.28%	73.45%	73.43%	73.61%
<b>Age</b>					
Recent High School Graduates	74.59%	76.59%	76.08%	79.47%	80.17%
Other < 22 Year Olds	74.63%	75.03%	75.04%	74.53%	74.91%
22-24	69.28%	73.88%	70.91%	69.41%	70.65%
25-49	69.93%	70.45%	72.40%	72.45%	71.50%
>49	67.52%	71.24%	72.13%	73.20%	78.35%
Age Not Reported	100.00%	0.00%	0.00%	0.00%	100.00%
<b>Race/Ethnicity</b>					
American Indian or Alaska Native	67.74%	69.44%	68.00%	70.00%	82.14%
Asian	73.92%	76.16%	74.82%	75.90%	75.79%
Black or African American	69.01%	66.27%	75.42%	66.21%	76.06%
Hispanic/Latino of Any Race	75.54%	63.47%	69.15%	74.59%	69.23%
Native Hawaiian	68.76%	70.05%	71.81%	72.09%	72.23%
Other Pacific Islander	72.04%	68.40%	69.05%	65.26%	65.33%
White	69.43%	72.49%	73.90%	72.84%	72.80%
Two or More Races	71.76%	73.84%	73.11%	71.91%	72.98%
Unknown/Other	74.38%	71.19%	77.61%	82.93%	76.14%
<b>Gender</b>					
Female	73.27%	74.40%	74.40%	74.33%	74.67%
Male	70.46%	72.08%	72.35%	72.57%	72.54%
Not Reported	84.38%	80.95%	89.29%	71.93%	76.81%
<b>Socio Economic (Pell)</b>					
Received Pell	82.91%	85.72%	84.01%	83.91%	81.41%
Did not receive Pell	69.62%	70.18%	69.36%	68.01%	68.88%
<b>Distance Completely On-Line Courses (DCO)</b>					
Student Took 1 or More DCO	71.69%	73.14%	74.38%	73.34%	72.48%
Student Took No DCO	71.94%	73.30%	73.25%	73.45%	73.90%
<b>AtD Cohort</b>					
AtD Cohort Entering Year	70.37%	71.74%	71.82%	71.91%	

Data Source:

ODS - IRAO Freeze Tables - IRO\_BASE, CENSUS

ODS - OVPCC Demographic Table - OVPCC\_DIAD\_SEMESTER: Table population is from IRO\_BASE with Pell and DCO groupings; MTT\_ACCOUNT\_DETAIL and IRO\_REGS

ODS - OVPCC Achieving the Dream Tables - OVPCC\_ATD\_COHORT

## UHCC Persistence Fall to Spring All Other Students

	2007	2008	2009	2010	2011
<b>Total</b>	56.97%	57.10%	57.74%	56.02%	55.55%
<b>Age</b>					
Recent High School Graduates	78.73%	80.35%	73.55%	67.90%	76.62%
Other< 22 Year Olds	58.70%	57.20%	57.17%	57.78%	54.64%
22-24	53.51%	53.99%	54.60%	54.68%	58.58%
25-49	49.49%	51.80%	58.16%	53.26%	49.78%
>49	58.05%	60.25%	55.46%	55.56%	66.82%
Age Not Reported	0.00%	0.00%	0.00%	100.00%	0.00%
<b>Race/Ethnicity</b>					
American Indian or Alaska Native	62.50%	37.50%	50.00%	25.00%	33.33%
Asian	61.22%	60.07%	59.18%	58.31%	56.53%
Black or African American	37.50%	40.00%	50.00%	43.33%	66.67%
Hispanic/Latino of Any Race	38.71%	52.24%	53.85%	61.70%	47.22%
Native Hawaiian	49.62%	53.77%	56.38%	55.03%	55.95%
Other Pacific Islander	53.62%	58.93%	59.38%	44.12%	37.04%
White	54.58%	54.61%	56.28%	52.61%	54.84%
Two or More Races	59.31%	55.43%	56.62%	59.65%	55.78%
Unknown/Other	65.71%	62.77%	62.92%	45.45%	59.26%
<b>Gender</b>					
Female	57.68%	56.51%	56.36%	54.31%	56.38%
Male	55.86%	57.98%	59.96%	58.56%	54.79%
Not Reported	66.67%	60.00%	47.62%	56.76%	39.13%
<b>Socio Economic (Pell)</b>					
Received Pell	65.38%	86.11%	80.00%	90.24%	77.08%
Did not receive Pell	56.88%	56.70%	57.35%	55.40%	55.05%
<b>Distance Completely On-Line Courses (DCO)</b>					
Student Took 1 or More DCO	57.09%	53.55%	57.29%	59.36%	54.57%
Student Took No DCO	56.95%	57.73%	57.85%	55.01%	55.81%
<b>AtD Cohort</b>					
AtD Cohort Entering Year	56.52%	0.00%	0.00%	0.00%	

Data Source:

ODS - IRAO Freeze Tables - IRO\_BASE, CENSUS

ODS - OVPCC Demographic Table - OVPCC\_DIAD\_SEMESTER: Table population is from IRO\_BASE with Pell and DCO groupings; MTT\_ACCOUNT\_DETAIL and IRO\_REGS

ODS - OVPCC Achieving the Dream Tables - OVPCC\_ATD\_COHORT

## **Appendix D - Figure 11: Degrees and Certificates Awarded Data**

## UHCC Degrees and Certificates

	2007			2008			2009			2010			2011		
<b>Total</b>	2,708			2,658			2,746			3,024			3,321		
<b>Outcome Type</b>	AA	AS AAS ATS	CA	AA	AS AAS ATS	CA	AA	AS AAS ATS	CA	AA	AS AAS ATS	CA	AA	AS AAS ATS	CA
<b>Sub Total</b>	1,167	1,226	315	1,127	1,153	378	1,208	1,200	338	1,360	1,246	418	1,503	1,344	474
<b>Age</b>															
Recent High School Graduates	1	0	2	0	0	0	0	0	0	0	0	0	0	0	0
Other< 22 Year Olds	388	254	107	368	277	116	441	271	112	504	291	141	601	279	120
22-24	307	302	65	317	284	80	349	285	78	358	304	85	353	301	85
25-49	424	627	131	402	557	165	381	609	139	466	608	180	501	720	244
>49	47	42	10	40	34	17	37	35	9	32	42	12	48	43	25
Age Not Reported	0	1	0	0	1	0	0	0	0	0	1	0	0	1	0
<b>Race/Ethnicity</b>															
American Indian or Alaska Native	7	3	2	4	2	0	4	8	4	4	6	3	4	7	3
Asian	534	633	163	500	646	166	549	656	169	579	671	183	615	647	210
Black or African American	19	8	0	8	12	3	16	10	1	14	9	5	11	21	7
Hispanic/Latino of Any Race	23	15	3	31	17	5	30	17	4	26	18	12	33	18	4
Native Hawaiian	188	194	46	210	170	81	233	185	47	307	229	85	395	310	98
Other Pacific Islander	27	22	2	30	17	10	26	25	7	24	30	12	20	18	2
White	203	179	55	197	160	70	189	164	65	221	147	70	224	181	101
Two or More Races	156	149	35	138	117	38	155	126	37	174	126	44	200	138	48
Unknown/Other	10	23	9	9	12	5	6	9	4	11	10	4	1	4	1
<b>Gender</b>															
Female	770	624	198	740	580	240	759	619	195	881	627	241	933	673	300
Male	397	600	116	386	570	136	447	577	141	477	614	177	569	667	173
Not Reported	0	2	1	1	3	2	2	4	2	2	5	0	1	4	1
<b>Socio Economic (Pell)</b>															
Received Pell	313	266	85	284	273	100	312	272	89	394	319	130	499	425	167
Did not receive Pell	854	960	230	843	880	278	896	928	249	966	927	288	1,004	919	307
<b>Distance Completely On-Line Courses (DCO)</b>															
Student Took 1 or More DCO	0	0	0	322	205	65	618	405	88	828	555	174	990	688	212
Student Took No DCO	1,167	1,226	315	805	948	313	590	795	250	532	691	244	513	656	262
<b>AtD Cohort</b>															
AtD Cohort Entering Year	*	*	*	*	*	*	*	*	*	*	*	*	*	*	*

Data Source:

ODS - IRAO Freeze Tables - IRO\_BASE, CENSUS

ODS - OVPCC Demographic Table - OVPCC\_DIAD\_SEMESTER: Table population is from IRO\_BASE with Pell and DCO groupings; MTT\_ACCOUNT\_DETAIL and IRO\_REGS

ODS - OVPCC Achieving the Dream Tables - OVPCC\_ATD\_STUDENT, OVPCC\_ATD\_GENERAL

\* Not Applicable



## UHCC Degrees and Certificates General and Pre-Professional Students

	2007			2008			2009			2010			2011		
<b>Total</b>	1,167			1,130			1,216			1,371			1,516		
<b>Outcome Type</b>	AA	AS AAS ATS	CA	AA	AS AAS ATS	CA	AA	AS AAS ATS	CA	AA	AS AAS ATS	CA	AA	AS AAS ATS	CA
<b>Sub Total</b>	1,167	0	0	1,127	3	0	1,208	8	0	1,360	11	0	1,503	13	0
<b>Age</b>															
Recent High School Graduates	0	0	*	0	0	*	0	0	*	0	0	*	0	0	*
Other < 22 Year Olds	1	0	*	0	0	*	0	0	*	0	0	*	0	0	*
22-24	388	0	*	368	1	*	441	2	*	504	1	*	601	4	*
25-49	307	0	*	317	1	*	349	3	*	358	4	*	353	1	*
>49	424	0	*	402	1	*	381	3	*	466	6	*	501	8	*
Age Not Reported	47	0	*	40	0	*	37	0	*	32	0	*	48	0	*
<b>Race/Ethnicity</b>															
American Indian or Alaska Native	7	0	*	4	0	*	4	0	*	4	0	*	4	0	*
Asian	534	0	*	500	2	*	549	3	*	579	6	*	615	3	*
Black or African American	19	0	*	8	1	*	16	0	*	14	0	*	11	2	*
Hispanic/Latino of Any Race	23	0	*	31	0	*	30	0	*	26	0	*	33	1	*
Native Hawaiian	188	0	*	210	0	*	233	1	*	307	1	*	395	3	*
Other Pacific Islander	27	0	*	30	0	*	26	0	*	24	1	*	20	0	*
White	203	0	*	197	0	*	189	4	*	221	2	*	224	2	*
Two or More Races	156	0	*	138	0	*	155	0	*	174	1	*	200	2	*
Unknown/Other	10	0	*	9	0	*	6	0	*	11	0	*	1	0	*
<b>Gender</b>															
Female	770	0	*	740	1	*	759	2	*	881	3	*	933	6	*
Male	397	0	*	386	2	*	447	6	*	477	8	*	569	7	*
Not Reported	0	0	*	1	0	*	2	0	*	2	0	*	1	0	*
<b>Socio Economic (Pell)</b>															
Received Pell	313	0	*	284	1	*	312	0	*	394	2	*	499	5	*
Did not receive Pell	854	0	*	843	2	*	896	8	*	966	9	*	1,004	8	*
<b>Distance Completely On-Line Courses (DCO)</b>															
Student Took 1 or More DCO	0	0	*	322	3	*	618	7	*	828	11	*	990	8	*
Student Took No DCO	1,167	0	*	805	0	*	590	1	*	532	0	*	513	5	*
<b>AtD Cohort</b>															
AtD Cohort Entering Year			*			*			*			*			*

Data Source:

ODS - IRAO Freeze Tables - IRO\_BASE, CENSUS

ODS - OVPCC Demographic Table - OVPCC\_DIAD\_SEMESTER: Table population is from IRO\_BASE with Pell and DCO groupings; MTT\_ACCOUNT\_DETAIL and IRO\_REGS

ODS - OVPCC Achieving the Dream Tables - OVPCC\_ATD\_STUDENT, OVPCC\_ATD\_GENERAL

\* Not Applicable

## UHCC Degrees and Certificates Career and Technical Ed Students

	2007			2008			2009			2010			2011		
<b>Total</b>	1,541			1,528			1,530			1,653			1,805		
<b>Outcome Type</b>	AA	AS AAS ATS	CA	AA	AS AAS ATS	CA	AA	AS AAS ATS	CA	AA	AS AAS ATS	CA	AA	AS AAS ATS	CA
<b>Sub Total</b>	0	1,226	315	0	1,150	378	0	1,192	338	0	1,235	418	0	1,331	474
<b>Age</b>															
Recent High School Graduates	*	0	2	*	0	0	*	0	0	*	0	0	*	0	0
Other < 22 Year Olds	*	254	107	*	276	116	*	269	112	*	290	141	*	275	120
22-24	*	302	65	*	283	80	*	282	78	*	300	85	*	300	85
25-49	*	627	131	*	556	165	*	606	139	*	602	180	*	712	244
>49	*	42	10	*	34	17	*	35	9	*	42	12	*	43	25
Age Not Reported	*	1		*	1		*			*	1		*	1	
<b>Race/Ethnicity</b>															
American Indian or Alaska Native	*	3	2	*	2		*	8	4	*	6	3	*	7	3
Asian	*	633	163	*	644	166	*	653	169	*	665	183	*	644	210
Black or African American	*	8		*	11	3	*	10	1	*	9	5	*	19	7
Hispanic/Latino of Any Race	*	15	3	*	17	5	*	17	4	*	18	12	*	17	4
Native Hawaiian	*	194	46	*	170	81	*	184	47	*	228	85	*	307	98
Other Pacific Islander	*	22	2	*	17	10	*	25	7	*	29	12	*	18	2
White	*	179	55	*	160	70	*	160	65	*	145	70	*	179	101
Two or More Races	*	149	35	*	117	38	*	126	37	*	125	44	*	136	48
Unknown/Other	*	23	9	*	12	5	*	9	4	*	10	4	*	4	1
<b>Gender</b>															
Female	*	624	198	*	579	240	*	617	195	*	624	241	*	667	300
Male	*	600	116	*	568	136	*	571	141	*	606	177	*	660	173
Not Reported	*	2	1	*	3	2	*	4	2	*	5		*	4	1
<b>Socio Economic (Pell)</b>															
Received Pell	*	266	85	*	272	100	*	272	89	*	317	130	*	420	167
Did not receive Pell	*	960	230	*	878	278	*	920	249	*	918	288	*	911	307
<b>Distance Completely On-Line Courses (DCO)</b>															
Student Took 1 or More DCO	*			*	202	65	*	398	88	*	544	174	*	680	212
Student Took No DCO	*	1,226	315	*	948	313	*	794	250	*	691	244	*	651	262
<b>AtD Cohort</b>															
AtD Cohort Entering Year	*			*			*			*			*		

Data Source:

ODS - IRAO Freeze Tables - IRO\_BASE, CENSUS

ODS - OVPCC Demographic Table - OVPCC\_DIAD\_SEMESTER: Table population is from IRO\_BASE with Pell and DCO groupings; MTT\_ACCOUNT\_DETAIL and IRO\_REGS

ODS - OVPCC Achieving the Dream Tables - OVPCC\_ATD\_STUDENT, OVPCC\_ATD\_GENERAL

\* Not Applicable

**Appendix E - Figure 13a: Developmental Education - Success in  
the Next College Level Course Disaggregated Data**

# UHCC Success in College Level Course from Developmental Course

## Math

	2008-2009		2009-2010		2010-2011	
	Entered	Successful	Entered	Successful	Entered	Successful
Entering from 1 Level Below	504	306	552	331	610	375
Percent Successful in College Level Course	61%		60%		61%	
<b>Age</b>						
Recent High School Graduates	165	104	163	97	154	95
Other < 22 Year Olds	191	109	212	112	245	135
22-24	48	28	54	36	61	39
25-49	97	62	118	82	137	95
>49	3	3	5	4	13	11
Age Not Reported	0	0	0	0	0	0
<b>Race/Ethnicity</b>						
American Indian or Alaska Native	1	1	2	2	1	0
Asian	265	159	269	157	249	152
Black or African American	4	4	3	1	6	2
Hispanic/Latino of Any Race	4	3	12	7	13	7
Native Hawaiian	95	59	116	68	160	94
Other Pacific Islander	15	11	21	8	17	6
White	46	28	67	49	91	71
Two or More Races	69	39	57	37	70	42
Unknown/Other	5	2	5	2	3	1
<b>Gender</b>						
Female	283	185	331	213	341	214
Male	219	119	218	115	265	158
Not Reported	2	2	3	3	4	3
<b>Socio Economic (Pell)</b>						
Received Pell	132	80	172	113	211	132
Did not receive Pell	372	226	380	218	399	243
<b>Distance Completely On-Line Courses (DCO)</b>						
Student Took 1 or More DCO	57	31	62	40	112	66
Student Took No DCO	447	275	490	291	498	309

Students who took and successfully completed course 1 level below college level in the fall and took college level in the spring.

Data Source:

ODS - IRAO Freeze Tables - IRO\_BASE, CENSUS

ODS - OVPCC Demographic Table - OVPCC\_DIAD\_SEMESTER: Table population is from IRO\_BASE with Pell and DCO groupings, MTT\_ACCOUNT\_DETAIL and IRO\_REGS

ODS - OVPCC Achieving the Dream Tables - OVPCC\_ATD\_COURSE

# UHCC Success in College Level Course from Developmental Course

## Reading

	2008-2009		2009-2010		2010-2011	
	Entered	Successful	Entered	Successful	Entered	Successful
Entering from 1 Level Below	48	36	41	29	53	37
Percent Successful in College Level Course	75%		71%		70%	
<b>Age</b>						
Recent High School Graduates	25	18	26	20	27	22
Other < 22 Year Olds	12	9	9	6	18	11
22-24	0	0	0	0	3	1
25-49	8	5	6	3	5	3
>49	3	3	0	0	0	0
Age Not Reported	0	0	0	0	0	0
<b>Race/Ethnicity</b>						
American Indian or Alaska Native	0	0	0	0	0	0
Asian	18	16	7	4	11	9
Black or African American	1	0	0	0	0	0
Hispanic/Latino of Any Race	3	3	2	1	1	1
Native Hawaiian	19	12	24	20	25	16
Other Pacific Islander	1	1	2	0	3	3
White	3	1	4	3	7	4
Two or More Races	3	2	2	1	6	4
Unknown/Other	0	0	0	0	0	0
<b>Gender</b>						
Female	31	24	26	21	41	26
Male	16	10	14	8	11	10
Not Reported	1	1	1	0	1	1
<b>Socio Economic (Pell)</b>						
Received Pell	16	12	16	13	36	25
Did not receive Pell	32	23	25	16	17	12
<b>Distance Completely On-Line Courses (DCO)</b>						
Student Took 1 or More DCO	5	3	0	1	7	3
Student Took No DCO	43	32	41	28	46	34

Students who took and successfully completed course 1 level below college level in the fall and took college level in the spring.

Data Source:

ODS - IRAO Freeze Tables - IRO\_BASE, CENSUS

ODS - OVPCC Demographic Table - OVPCC\_DIAD\_SEMESTER: Table population is from IRO\_BASE with Pell and DCO groupings, MTT\_ACCOUNT\_DETAIL and IRO\_REGS

ODS - OVPCC Achieving the Dream Tables - OVPCC\_ATD\_COURSE

# UHCC Success in College Level Course from Developmental Course

## Writing

	2008-2009		2009-2010		2010-2011	
	Entered	Successful	Entered	Successful	Entered	Successful
Entering from 1 Level Below	802	563	938	622	919	601
Percent Successful in College Level Course	70%		66%		65%	
<b>Age</b>						
Recent High School Graduates	432	323	459	318	441	291
Other < 22 Year Olds	223	139	279	171	237	144
22-24	55	34	47	28	68	41
25-49	86	62	144	101	161	115
>49	6	5	9	4	12	10
Age Not Reported	0	0	0	0	0	0
<b>Race/Ethnicity</b>						
American Indian or Alaska Native	2	2	1	1	1	1
Asian	357	262	401	294	354	241
Black or African American	9	6	17	12	20	12
Hispanic/Latino of Any Race	16	12	21	16	13	9
Native Hawaiian	201	123	233	135	306	186
Other Pacific Islander	35	20	33	17	34	21
White	83	61	90	62	86	63
Two or More Races	92	71	125	71	101	66
Unknown/Other	7	6	17	14	4	2
<b>Gender</b>						
Female	491	333	523	359	524	333
Male	308	227	410	261	384	257
Not Reported	3	3	5	2	11	11
<b>Socio Economic (Pell)</b>						
Received Pell	214	143	335	212	417	271
Did not receive Pell	588	420	603	410	502	330
<b>Distance Completely On-Line Courses (DCO)</b>						
Student Took 1 or More DCO	52	36	88	55	78	49
Student Took No DCO	750	527	850	567	841	552

Students who took and successfully completed course 1 level below college level in the fall and took college level in the spring.

Data Source:

ODS - IRAO Freeze Tables - IRO\_BASE, CENSUS

ODS - OVPCC Demographic Table - OVPCC\_DIAD\_SEMESTER: Table population is from IRO\_BASE with Pell and DCO groupings, MTT\_ACCOUNT\_DETAIL and IRO\_REGS

ODS - OVPCC Achieving the Dream Tables - OVPCC\_ATD\_COURSE

# UHCC Success in College Level Course from Developmental Course General and Pre-Professional Students

## Math

	2008-2009		2009-2010		2010-2011	
	Entered	Successful	Entered	Successful	Entered	Successful
Entering from 1 Level Below	374	226	433	254	452	285
Percent Successful in College Level Course	60%		59%		63%	
<b>Age</b>						
Recent High School Graduates	129	84	135	79	133	88
Other < 22 Year Olds	140	76	166	85	174	96
22-24	34	19	38	24	42	27
25-49	69	45	91	63	99	70
>49	2	2	3	3	4	4
Age Not Reported	0	0	0	0	0	0
<b>Race/Ethnicity</b>						
American Indian or Alaska Native	1	1	2	2	1	0
Asian	191	114	209	118	181	114
Black or African American	3	3	3	1	5	2
Hispanic/Latino of Any Race	3	3	10	6	10	6
Native Hawaiian	77	46	95	57	124	76
Other Pacific Islander	12	8	19	6	13	6
White	33	20	50	38	62	48
Two or More Races	52	30	42	25	56	33
Unknown/Other	2	1	3	1	0	0
<b>Gender</b>						
Female	213	138	264	169	265	171
Male	159	86	167	83	185	112
Not Reported	2	2	2	2	2	2
<b>Socio Economic (Pell)</b>						
Received Pell	105	63	150	98	166	111
Did not receive Pell	269	163	283	156	286	174
<b>Distance Completely On-Line Courses (DCO)</b>						
Student Took 1 or More DCO	40	22	49	32	88	55
Student Took No DCO	334	204	384	222	364	230

Students who took and successfully completed course 1 level below college level in the fall and took college level in the spring.

Data Source:

ODS - IRAO Freeze Tables - IRO\_BASE, CENSUS

ODS - OVPCC Demographic Table - OVPCC\_DIAD\_SEMESTER: Table population is from IRO\_BASE with Pell and DCO groupings, MTT\_ACCOUNT\_DETAIL and IRO\_REGS

ODS - OVPCC Achieving the Dream Tables - OVPCC\_ATD\_COURSE

# UHCC Success in College Level Course from Developmental Course General and Pre-Professional Students

## Reading

	2008-2009		2009-2010		2010-2011	
	Entered	Successful	Entered	Successful	Entered	Successful
Entering from 1 Level Below	36	30	29	21	31	21
Percent Successful in College Level Course	83%		72%		68%	
<b>Age</b>						
Recent High School Graduates	18	16	19	15	17	14
Other < 22 Year Olds	12	9	7	4	9	6
22-24	0	0	0	0	3	1
25-49	3	2	3	2	2	0
>49	3	3	0	0	0	0
Age Not Reported	0	0	0	0	0	0
<b>Race/Ethnicity</b>						
American Indian or Alaska Native	0	0	0	0	0	0
Asian	15	14	5	4	10	8
Black or African American	1	0	0	0	0	0
Hispanic/Latino of Any Race	3	3	0	0	1	1
Native Hawaiian	13	10	16	13	11	7
Other Pacific Islander	1	1	2	0	2	1
White	2	1	4	3	4	2
Two or More Races	1	1	2	1	3	2
Unknown/Other	0	0	0	0	0	0
<b>Gender</b>						
Female	23	20	17	14	26	17
Male	12	9	11	7	5	4
Not Reported	1	1	1	0	0	0
<b>Socio Economic (Pell)</b>						
Received Pell	13	11	9	8	20	14
Did not receive Pell	23	19	20	13	11	7
<b>Distance Completely On-Line Courses (DCO)</b>						
Student Took 1 or More DCO	4	2	0	1	7	3
Student Took No DCO	32	28	29	20	24	18

Students who took and successfully completed course 1 level below college level in the fall and took college level in the spring.

Data Source:

ODS - IRAO Freeze Tables - IRO\_BASE, CENSUS

ODS - OVPCC Demographic Table - OVPCC\_DIAD\_SEMESTER: Table population is from IRO\_BASE with Pell and DCO groupings, MTT\_ACCOUNT\_DETAIL and IRO\_REGS

ODS - OVPCC Achieving the Dream Tables - OVPCC\_ATD\_COURSE



# UHCC Success in College Level Course from Developmental Course General and Pre-Professional Students

## Writing

	2008-2009		2009-2010		2010-2011	
	Entered	Successful	Entered	Successful	Entered	Successful
Entering from 1 Level Below	571	402	697	465	637	411
Percent Successful in College Level Course	70%		67%		65%	
<b>Age</b>						
Recent High School Graduates	318	240	368	256	333	220
Other < 22 Year Olds	153	94	196	120	159	96
22-24	39	25	28	15	46	26
25-49	55	38	99	72	91	62
>49	6	5	6	2	8	7
Age Not Reported	0	0	0	0	0	0
<b>Race/Ethnicity</b>						
American Indian or Alaska Native	2	2	0	0	1	1
Asian	257	190	298	222	246	168
Black or African American	8	5	16	12	14	9
Hispanic/Latino of Any Race	12	8	16	12	9	6
Native Hawaiian	136	81	175	97	210	126
Other Pacific Islander	23	14	26	15	23	13
White	61	45	61	40	55	38
Two or More Races	67	54	91	56	76	48
Unknown/Other	5	3	14	11	3	2
<b>Gender</b>						
Female	365	253	399	275	384	243
Male	204	147	296	190	243	158
Not Reported	2	2	2	0	10	10
<b>Socio Economic (Pell)</b>						
Received Pell	156	104	258	164	288	184
Did not receive Pell	415	298	439	301	349	227
<b>Distance Completely On-Line Courses (DCO)</b>						
Student Took 1 or More DCO	36	26	57	36	55	30
Student Took No DCO	535	376	640	429	582	381

Students who took and successfully completed course 1 level below college level in the fall and took college level in the spring.

Data Source:

ODS - IRAO Freeze Tables - IRO\_BASE, CENSUS

ODS - OVPCC Demographic Table - OVPCC\_DIAD\_SEMESTER: Table population is from IRO\_BASE with Pell and DCO groupings, MTT\_ACCOUNT\_DETAIL and IRO\_REGS

ODS - OVPCC Achieving the Dream Tables - OVPCC\_ATD\_COURSE

# UHCC Success in College Level Course from Developmental Course Career and Technical Ed Students

## Math

	2008-2009		2009-2010		2010-2011	
	Entered	Successful	Entered	Successful	Entered	Successful
Entering from 1 Level Below	75	46	61	43	98	57
Percent Successful in College Level Course	61%		70%		58%	
<b>Age</b>						
Recent High School Graduates	31	17	16	11	14	6
Other < 22 Year Olds	25	17	22	15	39	18
22-24	5	4	9	7	15	9
25-49	13	7	12	9	21	17
>49	1	1	2	1	9	7
Age Not Reported	0	0	0	0	0	0
<b>Race/Ethnicity</b>						
American Indian or Alaska Native	0	0	0	0	0	0
Asian	45	26	29	22	47	25
Black or African American	1	1	0	0	1	0
Hispanic/Latino of Any Race	1	0	1	0	1	1
Native Hawaiian	9	6	15	7	18	9
Other Pacific Islander	2	2	1	1	1	0
White	6	5	6	4	19	14
Two or More Races	9	5	8	8	10	7
Unknown/Other	2	1	1	1	1	1
<b>Gender</b>						
Female	33	21	36	26	38	24
Male	42	25	24	16	59	33
Not Reported	0	0	1	1	1	0
<b>Socio Economic (Pell)</b>						
Received Pell	22	13	20	13	39	19
Did not receive Pell	53	33	41	30	59	38
<b>Distance Completely On-Line Courses (DCO)</b>						
Student Took 1 or More DCO	7	4	10	7	15	6
Student Took No DCO	68	42	51	36	83	51

Students who took and successfully completed course 1 level below college level in the fall and took college level in the spring.

Data Source:

ODS - IRAO Freeze Tables - IRO\_BASE, CENSUS

ODS - OVPCC Demographic Table - OVPCC\_DIAD\_SEMESTER: Table population is from IRO\_BASE with Pell and DCO groupings, MTT\_ACCOUNT\_DETAIL and IRO\_REGS

ODS - OVPCC Achieving the Dream Tables - OVPCC\_ATD\_COURSE

# UHCC Success in College Level Course from Developmental Course Career and Technical Ed Students

## Reading

	2008-2009		2009-2010		2010-2011	
	Entered	Successful	Entered	Successful	Entered	Successful
Entering from 1 Level Below	11	5	11	8	22	16
Percent Successful in College Level Course	45%		73%		73%	
<b>Age</b>						
Recent High School Graduates	7	2	7	5	10	8
Other < 22 Year Olds	0	0	2	2	9	5
22-24	0	0	0	0	0	0
25-49	4	3	2	1	3	3
>49	0	0	0	0	0	0
Age Not Reported	0	0	0	0	0	0
<b>Race/Ethnicity</b>						
American Indian or Alaska Native	0	0	0	0	0	0
Asian	3	2	1	0	1	1
Black or African American	0	0	0	0	0	0
Hispanic/Latino of Any Race	0	0	2	1	0	0
Native Hawaiian	6	2	8	7	14	9
Other Pacific Islander	0	0	0	0	1	2
White	1	0	0	0	3	2
Two or More Races	1	1	0	0	3	2
Unknown/Other	0	0	0	0	0	0
<b>Gender</b>						
Female	8	4	8	7	15	9
Male	3	1	3	1	6	6
Not Reported	0	0	0	0	1	1
<b>Socio Economic (Pell)</b>						
Received Pell	3	1	7	5	16	11
Did not receive Pell	8	4	4	3	6	5
<b>Distance Completely On-Line Courses (DCO)</b>						
Student Took 1 or More DCO	1	1	0	0	0	0
Student Took No DCO	10	4	11	8	22	16

Students who took and successfully completed course 1 level below college level in the fall and took college level in the spring.

Data Source:

ODS - IRAO Freeze Tables - IRO\_BASE, CENSUS

ODS - OVPCC Demographic Table - OVPCC\_DIAD\_SEMESTER: Table population is from IRO\_BASE with Pell and DCO groupings, MTT\_ACCOUNT\_DETAIL and IRO\_REGS

ODS - OVPCC Achieving the Dream Tables - OVPCC\_ATD\_COURSE

# UHCC Success in College Level Course from Developmental Course Career and Technical Ed Students

## Writing

	2008-2009		2009-2010		2010-2011	
	Entered	Successful	Entered	Successful	Entered	Successful
Entering from 1 Level Below	168	108	188	122	246	162
Percent Successful in College Level Course	64%		65%		66%	
<b>Age</b>						
Recent High School Graduates	81	56	77	52	92	58
Other < 22 Year Olds	47	26	60	37	65	40
22-24	12	5	13	8	20	12
25-49	28	21	35	23	65	49
>49	0	0	3	2	4	3
Age Not Reported	0	0	0	0	0	0
<b>Race/Ethnicity</b>						
American Indian or Alaska Native	0	0	1	1	0	0
Asian	67	47	74	53	93	59
Black or African American	1	1	1	0	5	2
Hispanic/Latino of Any Race	2	2	4	3	3	2
Native Hawaiian	53	32	48	31	89	57
Other Pacific Islander	10	4	6	2	10	7
White	17	11	26	19	26	21
Two or More Races	18	11	26	11	19	14
Unknown/Other	0	0	2	2	1	0
<b>Gender</b>						
Female	89	51	94	65	116	72
Male	78	56	91	55	129	89
Not Reported	1	1	3	2	1	1
<b>Socio Economic (Pell)</b>						
Received Pell	54	35	69	45	125	83
Did not receive Pell	114	73	119	77	121	79
<b>Distance Completely On-Line Courses (DCO)</b>						
Student Took 1 or More DCO	15	9	22	13	18	15
Student Took No DCO	153	99	166	109	228	147

Students who took and successfully completed course 1 level below college level in the fall and took college level in the spring.

Data Source:

ODS - IRAO Freeze Tables - IRO\_BASE, CENSUS

ODS - OVPCC Demographic Table - OVPCC\_DIAD\_SEMESTER: Table population is from IRO\_BASE with Pell and DCO groupings, MTT\_ACCOUNT\_DETAIL and IRO\_REGS

ODS - OVPCC Achieving the Dream Tables - OVPCC\_ATD\_COURSE

# UHCC Success in College Level Course from Developmental Course All Other Students

## Math

	2008-2009		2009-2010		2010-2011	
	Entered	Successful	Entered	Successful	Entered	Successful
Entering from 1 Level Below	55	34	58	34	60	33
Percent Successful in College Level Course	62%		59%		55%	
<b>Age</b>						
Recent High School Graduates	5	3	12	7	7	1
Other < 22 Year Olds	26	16	24	12	32	21
22-24	9	5	7	5	4	3
25-49	15	10	15	10	17	8
>49	0	0	0	0	0	0
Age Not Reported	0	0	0	0	0	0
<b>Race/Ethnicity</b>						
American Indian or Alaska Native	0	0	0	0	0	0
Asian	29	19	31	17	21	13
Black or African American	0	0	0	0	0	0
Hispanic/Latino of Any Race	0	0	1	1	2	0
Native Hawaiian	9	7	6	4	18	9
Other Pacific Islander	1	1	1	1	3	0
White	7	3	11	7	10	9
Two or More Races	8	4	7	4	4	2
Unknown/Other	1	0	1	0	2	0
<b>Gender</b>						
Female	37	26	31	18	38	19
Male	18	8	27	16	21	13
Not Reported	0	0	0	0	1	1
<b>Socio Economic (Pell)</b>						
Received Pell	5	4	2	2	6	2
Did not receive Pell	50	30	56	32	54	31
<b>Distance Completely On-Line Courses (DCO)</b>						
Student Took 1 or More DCO	10	5	3	1	9	5
Student Took No DCO	45	29	55	33	51	28

Students who took and successfully completed course 1 level below college level in the fall and took college level in the spring.

Data Source:

ODS - IRAO Freeze Tables - IRO\_BASE, CENSUS

ODS - OVPCC Demographic Table - OVPCC\_DIAD\_SEMESTER: Table population is from IRO\_BASE with Pell and DCO groupings, MTT\_ACCOUNT\_DETAIL and IRO\_REGS

ODS - OVPCC Achieving the Dream Tables - OVPCC\_ATD\_COURSE

# UHCC Success in College Level Course from Developmental Course All Other Students

## Reading

	2008-2009		2009-2010		2010-2011	
	Entered	Successful	Entered	Successful	Entered	Successful
Entering from 1 Level Below	1	0	1	0	0	0
Percent Successful in College Level Course	0%		0%		0%	
<b>Age</b>						
Recent High School Graduates	0	0	0	0	0	0
Other < 22 Year Olds	0	0	0	0	0	0
22-24	0	0	0	0	0	0
25-49	1	0	1	0	0	0
>49	0	0	0	0	0	0
Age Not Reported	0	0	0	0	0	0
<b>Race/Ethnicity</b>						
American Indian or Alaska Native	0	0	0	0	0	0
Asian	0	0	0	0	0	0
Black or African American	0	0	0	0	0	0
Hispanic/Latino of Any Race	0	0	0	0	0	0
Native Hawaiian	0	0	0	0	0	0
Other Pacific Islander	0	0	0	0	0	0
White	0	0	0	0	0	0
Two or More Races	0	0	0	0	0	0
Unknown/Other	0	0	0	0	0	0
<b>Gender</b>						
Female	0	0	0	0	0	0
Male	0	0	0	0	0	0
Not Reported	0	0	0	0	0	0
<b>Socio Economic (Pell)</b>						
Received Pell	0	0	0	0	0	0
Did not receive Pell	0	0	0	0	0	0
<b>Distance Completely On-Line Courses (DCO)</b>						
Student Took 1 or More DCO	0	0	0	0	0	0
Student Took No DCO	0	0	0	0	0	0

Students who took and successfully completed course 1 level below college level in the fall and took college level in the spring.

Data Source:

ODS - IRAO Freeze Tables - IRO\_BASE, CENSUS

ODS - OVPCC Demographic Table - OVPCC\_DIAD\_SEMESTER: Table population is from IRO\_BASE with Pell and DCO groupings, MTT\_ACCOUNT\_DETAIL and IRO\_REGS

ODS - OVPCC Achieving the Dream Tables - OVPCC\_ATD\_COURSE

# UHCC Success in College Level Course from Developmental Course All Other Students

## Writing

	2008-2009		2009-2010		2010-2011	
	Entered	Successful	Entered	Successful	Entered	Successful
Entering from 1 Level Below	63	53	53	35	36	28
Percent Successful in College Level Course	84%		66%		78%	
<b>Age</b>						
Recent High School Graduates	33	27	14	10	16	13
Other < 22 Year Olds	23	19	23	14	13	8
22-24	4	4	6	5	2	3
25-49	3	3	10	6	5	4
>49	0	0	0	0	0	0
Age Not Reported	0	0	0	0	0	0
<b>Race/Ethnicity</b>						
American Indian or Alaska Native	0	0	0	0	0	0
Asian	33	25	29	19	15	14
Black or African American	0	0	0	0	1	1
Hispanic/Latino of Any Race	2	2	1	1	1	1
Native Hawaiian	12	10	10	7	7	3
Other Pacific Islander	2	2	1	0	1	1
White	5	5	3	3	5	4
Two or More Races	7	6	8	4	6	4
Unknown/Other	2	3	1	1	0	0
<b>Gender</b>						
Female	37	29	30	19	24	18
Male	26	24	23	16	12	10
Not Reported	0	0	0	0	0	0
<b>Socio Economic (Pell)</b>						
Received Pell	4	4	8	3	4	4
Did not receive Pell	59	49	45	32	32	24
<b>Distance Completely On-Line Courses (DCO)</b>						
Student Took 1 or More DCO	1	1	9	6	5	4
Student Took No DCO	62	52	44	29	31	24

Students who took and successfully completed course 1 level below college level in the fall and took college level in the spring.

Data Source:

ODS - IRAO Freeze Tables - IRO\_BASE, CENSUS

ODS - OVPCC Demographic Table - OVPCC\_DIAD\_SEMESTER: Table population is from IRO\_BASE with Pell and DCO groupings, MTT\_ACCOUNT\_DETAIL and IRO\_REGS

ODS - OVPCC Achieving the Dream Tables - OVPCC\_ATD\_COURSE