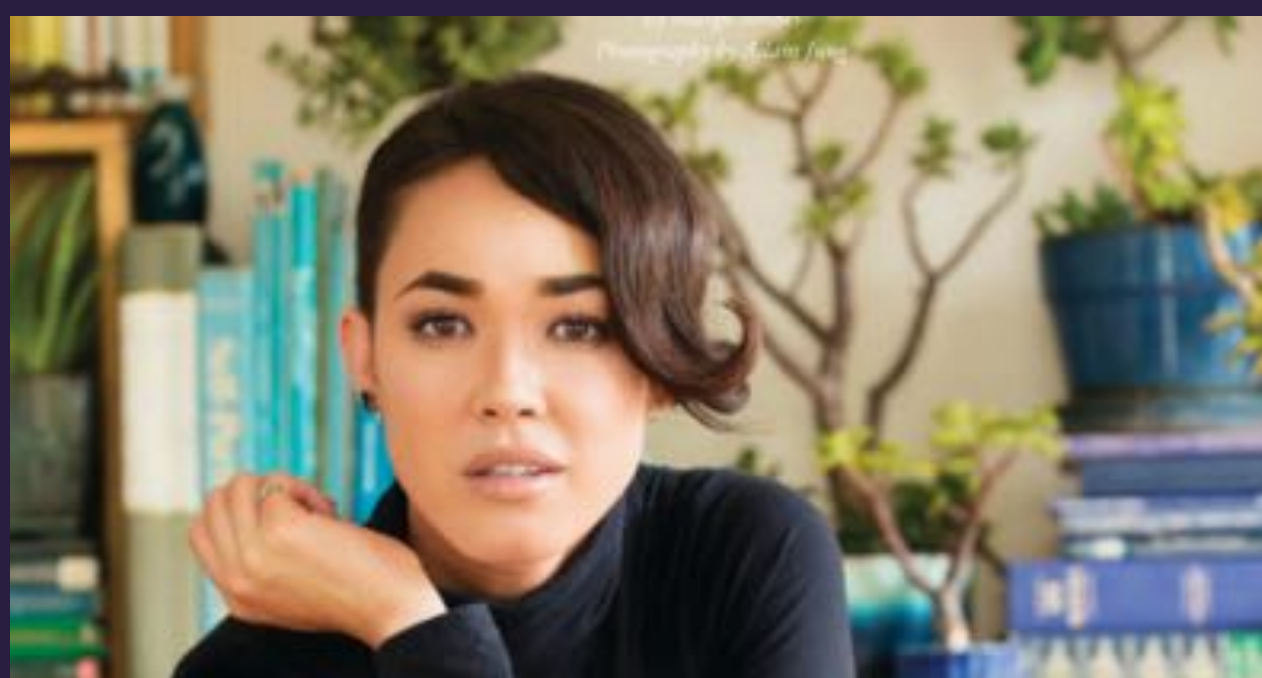


WAIKIKI: A NARRATIVE FEATURE FILM ABOUT WAIKIKI™ IN WAIKĪKĪ



In Hawai'i, the repercussions of colonialism and Statehood have left a people severed from ancestral land and culture. This has had a profound effect on Hawaiian psychology and self-image. With Waikīkī being the crown jewel of the tourism industry and the driving force behind the exploitation of Hawaiian culture, it very clearly presented itself as the setting in which to discuss these issues. This film explores the contradictions of nature and development in contemporary Hawai'i, allowing for greater understanding of the film's subtext – how the destruction of nature impacts mental and spiritual health. As the world recognizes modern societies destruction of the planet, and begins to understand the importance of indigenous knowledge to face these challenges, WAIKIKI serves as a call to action for all people to realize that our survival is intrinsically tied to nature.

Hawaiian filmmaker Christopher Kahunahana is a Sundance Institute Feature Film and Native Lab alumni. As founder of 4th World Film, he directed LĀHAINĀ NOON, which premiered at HIFF 2014 as well as a pseudo-documentary for the Smithsonian Institute's Asian Pacific American "A Day in the Life" project.



Nicole Naone is the founder of PointHawaii.com, the official media sponsor of the 2016 Hawai'i International Film Festival. She was the 2013 recipient of the David H. and Doris C. Cromwell Award of Excellence and has held speaking engagements on behalf of the University of Hawai'i as an Alumni Expert of its Arts and Culture program.

Thursday, October 1 at Noon (HST) On Zoom
Meeting ID: 994 0508 2678 / Password: c8yY50

