

# SLSSA Student Handbook 2013-2014



UNIVERSITY  
*of* HAWAII®  

---

MĀNOA

## Table of Contents

<b>Letter from the Editors</b> .....	2
--------------------------------------	---

### **Part One: Life in Hawai‘i**

Maps.....	4
Housing.....	5
Utilities/Mobile Phone Services.....	7
Transportation.....	8
Getting to Campus.....	9
Banking.....	11
Health Care.....	13
Groceries and Shopping.....	16
Public Services.....	17

### **Part Two: Academics**

Campus Map.....	20
Academic Calendar.....	21
Important Dates.....	22
SLS Faculty and Staff.....	24
SLS Courses.....	25
Scholarly Paper and Thesis Options.....	33
SLSSA/PEEPs.....	35
Student Information.....	37
Student Health Services.....	37
Student ID and Validation.....	37
SLS Resources and Labs.....	38
Writing Center.....	39
Library Guide.....	39
On Campus Dining.....	42
Computers on Campus.....	44
Study spots.....	45
Funding Opportunities.....	48
Volunteer opportunities.....	51

*Please view the Student Handbook using Adobe Reader to access hyperlinks.*

## Letter from the Editors

Dear Incoming Student:

Congratulations on being accepted to the Second Language Studies program at the University of Hawai'i at Mānoa. You must have many questions to ask about Hawai'i and our program. We hope that this Student Handbook can help answer some of your questions as well as provide information that may be difficult to access or find online on your own.

This first PDF edition of the Student Handbook would not have been possible if not for the help of Dr. Graham Crookes ([crookes@hawaii.edu](mailto:crookes@hawaii.edu)) and current Second Language Studies Student Association (SLSSA) board members (listed below).

**Presidents:** Michael Bischoff ([mbischof@hawaii.edu](mailto:mbischof@hawaii.edu)) and Gordon West ([gordonbw@hawaii.edu](mailto:gordonbw@hawaii.edu))

**Academic Vice Presidents:** Sunhee Kim ([sunheeki@hawaii.edu](mailto:sunheeki@hawaii.edu)) and Kasey Larson ([klarson@hawaii.edu](mailto:klarson@hawaii.edu))

**Computer Vice President:** Megumi Jinushi ([megumij@hawaii.edu](mailto:megumij@hawaii.edu))

**Fundraising Vice Presidents:** Marissa Hanada ([mhanada@hawaii.edu](mailto:mhanada@hawaii.edu)) and Daniel Jackson ([danieloj@hawaii.edu](mailto:danieloj@hawaii.edu))

**Social Vice Presidents:** Juan Escalona ([je25@hawaii.edu](mailto:je25@hawaii.edu)), Lisa Houghtailing ([lhoughta@hawaii.edu](mailto:lhoughta@hawaii.edu)), and Tammy Smith ([tksmith7@hawaii.edu](mailto:tksmith7@hawaii.edu))

**Treasurers:** Sujeong Choi ([sujeongc@hawaii.edu](mailto:sujeongc@hawaii.edu)) and Aurora Tsai ([amtsai@hawaii.edu](mailto:amtsai@hawaii.edu))

**Secretaries:** Yuzuko Nagashima ([yuzukon@hawaii.edu](mailto:yuzukon@hawaii.edu)) and Hami Suzuki ([suzukiha@hawaii.edu](mailto:suzukiha@hawaii.edu))

**Department Personnel and Policy Committee representatives:** Michelle Adams ([madams@hawaii.edu](mailto:madams@hawaii.edu)), Gerriet Janssen ([gjanssen@hawaii.edu](mailto:gjanssen@hawaii.edu)), and Mónica Vidal ([mvidal@hawaii.edu](mailto:mvidal@hawaii.edu))

We all tried to think back to how we felt when we first heard word about our acceptances, and we created this Handbook as a guide we would have liked to have ourselves before entering the program.

We also would like to thank the writers and contributors of the online version of the Student Handbook ([http://www.hawaii.edu/sls/sls/?page\\_id=1087](http://www.hawaii.edu/sls/sls/?page_id=1087)). It is another great resource, and in fact, many of the sections in this Student Handbook were based off of the online SLS Student Handbook and information from the department website (<http://www.hawaii.edu/sls/>). We encourage all incoming students to look through the many links on the department website for specific information on how to request letters of recommendation, take a directed reading class, and other departmental policies.

Finally, please feel free to contact any one of us about the information listed in the Handbook. We'd be happy to talk to you or answer any questions you have about the program and/or your future life in Hawai'i. In addition, if you have any suggestions or comments for the Handbook, please send them to [slssa.academicvp@gmail.com](mailto:slssa.academicvp@gmail.com).

PS: You are all invited to join our Facebook community! ☺ There's always a lot of useful information and discussion going on! <https://www.facebook.com/groups/119838615404/>

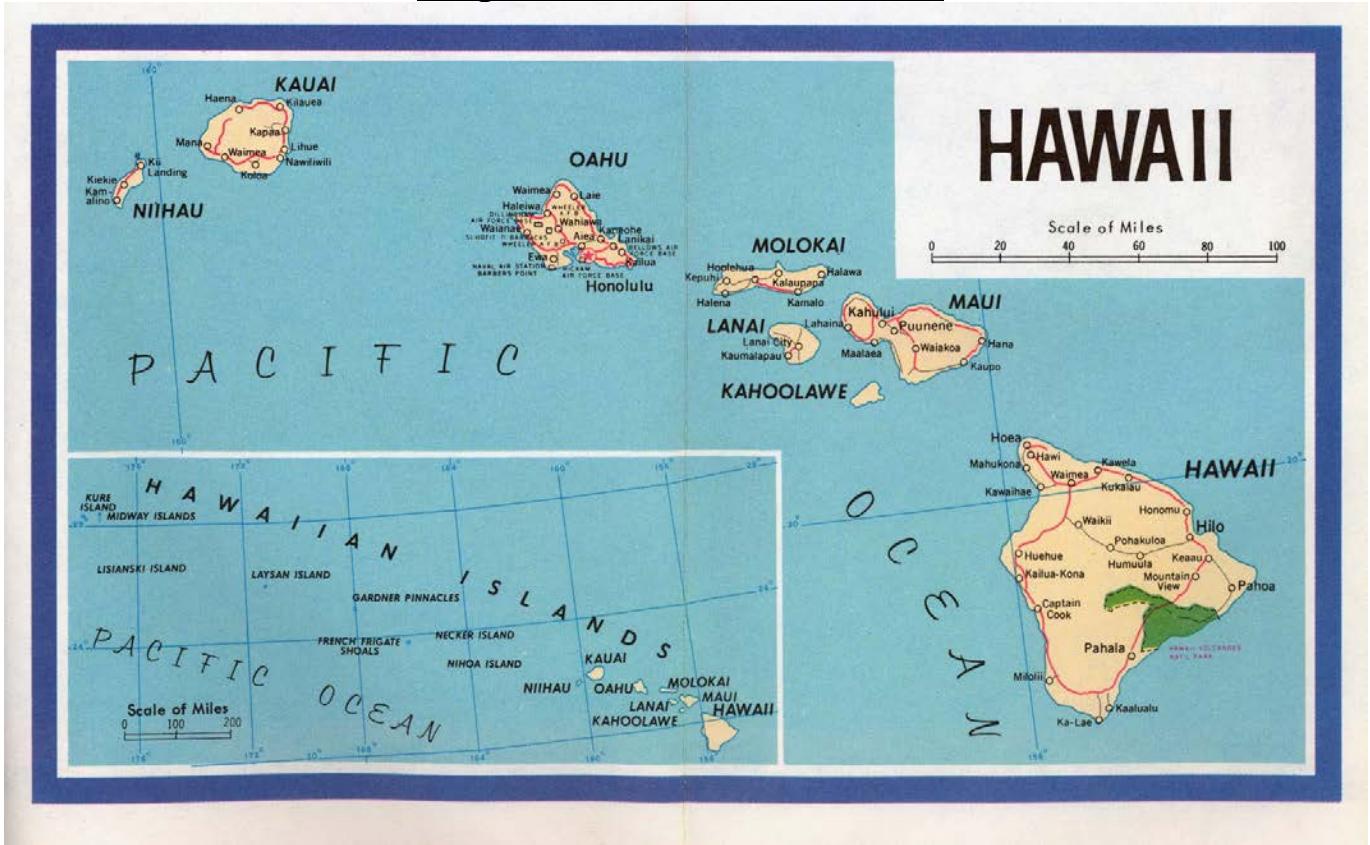
Thank you and see you soon,

Your SLSSA Academic Vice Presidents  
Sunhee Kim and Kasey Larson

# Part One: Life in Hawai'i



# Map of the Hawaiian Islands



# Map of Oahu



## Housing

Finding housing in Honolulu, around campus, is not an easy feat. Essentially there are two options: on-campus housing and off-campus housing.

### **On-Campus Housing**

Graduate housing consists of one building of the Hale Wainani low rise apartments. Your options are a one bedroom apartment for two residents or a two bedroom apartment for two or four residents. Below are the approximate prices for the academic year (both Fall and Spring semester). These prices are subject to change.

- 1 bedroom 2 residents: \$ 7,504
- 2 bedroom 2 residents: \$ 10,047
- 2 bedroom 4 residents: \$ 5,910

Apartments are fully furnished with complete kitchen, living room, bathroom and bedroom(s). Utilities are included in the rent charge. Rooms are equipped with data ports and cable TV outlets. Residents must furnish their own kitchen and dining utensils, linens, pillows, telephone, and other personal supplies. None of the buildings are air conditioned.

The priority deadline for applications is usually end of April, early May for the following academic school year. Applications are now done online and you must pay a \$25 application fee.

Please see the student housing website for more information, especially up to date rates and to apply.

<http://manoa.hawaii.edu/housing/>

*A note from a graduate student housing resident: The grad housing is right next to the wet (alcohol permitted) undergraduate student housing. This area can get quite loud especially on the weekends.*

East-West Center Housing consists of two buildings, Hale Mānoa and Hale Kuahine, on upper campus off East-West Road. Housing here is available to graduate students with priority giving to students 1) majoring in Asia-Pacific related studies, 2) with research or major projects focusing on the Asia-Pacific region, and 3) with professional commitment to the Asia-Pacific region. When applying for housing, applicants will have to write a short essay explaining their relationship to the Asia-Pacific region. Along with their application, students will need to submit a health clearance form and pay a \$20 application fee. Applications are usually accepted starting in May for the following academic school year. Please see the East-West Center Housing website for more information. Temporary stays as well as semester-long stays are available.

<http://www.eastwestcenter.org/about-ewc/housing/student-housing>

### **Off-Campus Housing**

#### **Dormitories**

There are many off-campus student dormitories around Honolulu.

Hawaii Student Suites has five locations of student housing to choose from: Beachwalk, Kalo Terrace, Pagoda, White Sands, and Ewa Hotel. Check out their website for more information including rates.

<http://www.hawaiistudentsuites.com/>

Another dormitory is Shinshu Kyokai Mission Dormitory located on Beretania St. Check out their pamphlet for more information. <http://www.shinshukyokai.org/Pamphlet.pdf> *Note: This dormitory is fairly strict so make sure you check out the resident rules before deciding if this is the place for you.*

Atherton Student Housing is run by the YMCA and is located on University Avenue next to campus. Nu`uanu Student Residence Program is also run by the YMCA and only a short bus ride away from campus. Check out the YMCA accommodations website for more information [http://www.ymcahonolulu.org/accommodations/student\\_housing](http://www.ymcahonolulu.org/accommodations/student_housing)

## **Rentals**

Finding a place to rent in Honolulu can be difficult. Your options are to rent a studio, apartment, house, or a room in a house or apartment. Some areas popular with students are: Makiki, Palolo, Moilili, McCully, and Manoa. Unfortunately, landlords won't usually set up a rental far in advance, so please keep that in mind when looking for a place.

The best way to start looking is through Craigslist. <http://honolulu.craigslist.org/oah/apa/>

Another website that might be useful is <http://www.padmapper.com/>

The University has a separate website for off-campus housing. Please see <https://www.housing.hawaii.edu/och/>. You must have a UH username and password to participate in the roommate referral program.

A small range of rental possibilities is listed by the UHM Women's Campus Club organization. <http://www.hawaii.edu/wcc/exchange.html>

To view off-campus accommodations, please visit <https://www.housing.hawaii.edu/och/basicoch/OCHaccom.cfm>. We've had a couple students in the University Manor ☺

## Utilities/Mobile Phone Services

### Utilities

- Electricity fees depend on your housing situation – they may or may not be included. Always ask! Hawaiian Electric Company (HECO) is the only company that provides electricity on Oahu.
- Gas is usually included with housing.
- Water is usually included with housing. However, you might want to check with the owner when considering a place off-campus...because it is expensive separately.
- We recommend Oceanic Time Warner for internet. It will be around \$35 each month.

*Note: For on-campus housing and certain off-campus ones, utilities are generally included. Again, please be sure to check!*

### Mobile Phone Services

#### Major companies

- AT&T: <http://www.att.com>
  - If you don't use your cell phone very often, AT&T has prepaid phones called Go Phones that offer cheap plans without a contract.  
Ex. \$25 rate plan for unlimited texts and 250 minutes + \$5 data plan (50 MB). You will be charged \$30 a month.
- Sprint: <http://www.sprint.com>
- Verizon: <http://www.verizonwireless.com>
- T-Mobile: <http://www.t-mobile.com>

#### Cheaper options

- Virgin: <http://www.virginmobileusa.com>
- Mobi PCS: <http://mobipcs.com>

*Note: If you are coming from mainland USA, you may bring your number and phone here without any additional charge.*



## **Transportation**

While the University of Hawai‘i at Mānoa is set in lush Mānoa Valley, it is still very much part of the Honolulu urban complex, so transportation options for getting to campus and around town are not for lacking. Some of your transportation options will necessarily be better than others depending upon how close you choose to live to campus, budget, and your own personal choices. This section will help you in figuring out how to best get around campus and Honolulu in general. Much of this information can be found at the UH Commuter Services website: <http://manoa.hawaii.edu/commuter/>

### **Directions – What is mauka and makai?**

As you may notice, roads in Hawaii typically do not run in a north-south-east-west direction, and thus giving and receiving directions can be downright confusing if you rely on the cardinal directions. However, the geography of Hawai‘i has two very convenient and distinct landmarks to help orient you, the mountains and the ocean. So important are these landmarks that they are a part of the local language. ‘Mauka’ means ‘toward the mountains’ and ‘Makai’ means ‘toward the ocean’. On the side of Oahu that UH is located, they roughly correspond to north and south respectively, but since they are geographically dependent, be careful if you visit the North Shore, where the directions will be reversed!

Also, you will occasionally hear people refer to ‘Ewa’ and ‘Diamond Head’ in a directional sense. ‘Ewa’ refers to Ewa, a location on the west side of the island, and so roughly means west. ‘Diamond Head’ refers to the prominent geographical feature near Waikiki on the east side of the island, so roughly means east. Sometimes you will hear ‘Koko Head’ substituted for ‘Diamond Head’; Koko Head just happens to be further to the east.

# Getting to Campus

## **TheBus**

Whether you live near or far from campus, TheBus (operated by the City and County of Honolulu) represents a cheap, easy, and mostly convenient option for getting to school. As a UH student you do not need to pay regular fares. Part of your tuition and fees includes \$30 for the U-Pass, which is a sticker that is affixed to your student ID and allows you unlimited rides on TheBus. Make sure to obtain your U-Pass by visiting the Student ID office at the beginning of each semester.

Several bus routes stop at various points on and near campus. It is impossible to cover every single route that is useful for students in SLS, but these tend to be the most heavily utilized. For more information about TheBus in general, including maps and timetables of all of the routes mentioned here, please visit <http://www.thebus.org/> Also, be aware that often the bus route timetables are wholly inaccurate due to traffic conditions affecting the buses. You can visit <http://hea.thebus.org/> and input the bus stop you're waiting at or intend to wait at to get up-to-the-minute updates on what buses are coming and when they will arrive. If you don't have a smart phone available, you may call (808) 848-5555. Once you become more familiar with the various bus routes, this can save you a great deal of time in commuting and getting around! You may call

### **Route A**

This is a limited-stop route that runs all the way from Waipahu near Pearl Harbor and terminates near Sinclair Library on campus. Service is relatively regular and also makes convenient stops near the Ala Moana Shopping Center and Chinatown. If you live Downtown or near Ala Moana, this is usually the best route to campus.

### **Route 1**

This bus does not stop directly on campus, but you can get off very close to the Lower Campus by getting off at the King Street/University Ave stop. Since Route 1 runs from Downtown all the way out to Kahala and Hawaii Kai, it's a very useful route to take, especially if you live in any of the neighborhoods east of UH.

### **Route 4**

This bus is a useful one to take to campus if you live in the neighborhoods of Moiliili, Makiki, Nuuanu, and Downtown. However, if you live in Nuuanu it can take some time to get to campus as the route winds its way through Downtown. You can get off at University Ave/Metcalf St. just across the way from Sinclair Library.

### **Route 6**

This bus is a good route for you if you find yourself living in Mānoa, Moiliili, or Pauoa Valley. You also have easy access to the Ala Moana Shopping Center and Ward Entertainment Complex as a consequence of living along this route. Much like route 4, you can get off at University Ave./Metcalf St. However, Route 6 does a loop of campus during weekdays and Saturdays within certain times ONLY when the route designation sign says 'Woodlawn Dr. via East-West Road'.

### **Route 13**

This bus runs a somewhat convoluted path through various parts of Honolulu, and is one of the better routes to take to campus if you live in Waikiki or Kapahulu. This route does a loop around the Upper Campus, and lucky for you happens to stop right in front of Moore Hall.

## **Route 18**

This bus stops at University Ave./Metcalf St. and makes stops along Dole St, and runs from UH to Ala Moana Center through Makiki. This route runs infrequently, usually only one bus each hour. It is not advisable to wait on this bus, especially if you just end up missing it!

## **Bicycling**

Cycling is a viable option for getting to campus and the most environmentally friendly of them all. Bicycles can be purchased new from McCully Bike, which is located a few blocks west of Puck's Alley. Used bikes are available on Craigslist (buyer beware!) and from Cycle Mānoa (<http://cyclemanoa.org/>), who run a semesterly used bike sale.

The UH Mānoa campus is easily accessible by bicycle. Many of the streets leading to campus have separately delineated bike lanes. If a street lacks a bike lane, you are allowed to ride in the street with regular traffic here in Hawaii. If you are not comfortable doing this, in general, riding on the sidewalk is tolerated, but it is advised that you do so at a greatly reduced rate of speed to lessen the chance of collisions with pedestrians. In cases of poor weather or tired legs, all city buses have bike racks that you can secure your bicycle to. This is a great way to lessen the strain of your commute if you live a little bit further from campus, or if you encounter a mechanical problem along the way.

There are numerous bike racks conveniently located all across the UH Mānoa Campus, however bike theft is a major problem not only at UH but all across Honolulu. Remember to properly lock up your bicycle whenever you will be leaving it unattended, even if only for a single minute. The best way to do this is to purchase a U-shaped lock and at the very least secure the frame of your bicycle along with the front or rear wheel (depending on orientation) to the bike rack. Wheels are stolen from locked bikes on occasion, so loop a cable around your unlocked wheel and through the U-lock whenever possible; or simply use a second U-lock to secure the unlocked wheel to the frame.

More information about cycling at UH can be found at the Commuter Services website:

<http://manoa.hawaii.edu/commuter/bike.html>

## **Driving**

Like most universities around the United States, driving a personal vehicle to and parking on campus is an option. However, there are a number of caveats to keep in mind. Also like most American universities, finding parking can be a huge challenge if one wants to park for free, otherwise it represents a hefty expense each semester.

If you do wish to commute to UH by car, free street parking is available along Dole Street and in the residential areas near the upper campus. Free street parking is also available in the residential areas around lower campus. It is advised that you arrive as early in the morning as possible, as there is plenty of competition for these few spaces. Otherwise, expect to have to find a space farther from campus and the long walk that will follow. Always check signage to ensure it is legal to park on the street. Do not park at the Mānoa Marketplace parking lot, as your car will be swiftly booted and/or towed away at your expense.

If you wish to pay for parking, there are limited parking permits available each semester. You may learn more at the UH Commuter website: <http://manoa.hawaii.edu/commuter/parkingpermits.php>

## **Banking**

A lot of popular mainland banks are either not available in Hawaii, or do not have a main branch. Banks such as Bank of America, Wells Fargo, or even First Bank, are NOT very accessible from the islands.

It is recommended you open an account with one of the banks listed below. They are close to campus, accessible from almost anywhere in Honolulu, and these are trusted banks used by many UH students.

### **University of Hawaii Federal Credit Union (UHFCU)**

UHFCU has three branches close by. One is inside Campus Center by Jamba Juice and Starbucks. This location is the most convenient but cannot do shared branch banking for other credit unions. One branch is way up on upper campus at the end of East-West Rd. to the left past the Bio-Medical Science Building. This branch can do shared branch banking with other credit unions. The main branch is on S. King St. and McCully St. They have good rates in terms of savings, and their penalty fees are not as high as other banks. A big benefit of having a UHFCU account is that you can withdraw cash from any First Hawaiian Bank ATM with no charge.

\*\*Also more practical and accessible for withdrawing with international bank cards.

#### **Main branch**

Address: 2019 S King St, Honolulu, HI

Telephone: (808) 983-5500

Website: <http://www.uhfcu.com>

+Phone Apps available

### **American Savings**

This bank is one of the most popular banks in Hawai'i. It has branches and ATMs all over the Hawaiian Islands from Kaua'i to the Big Island. Most importantly, they have a branch at UH. It is located between Campus Center and Sinclair Library, right inside the same building as BaLe. The bank offers very similar services to banks like Bank of America or Wells Fargo. Their hours seem more reasonable than UHFCU. Check out their page or give them a call for more information.

#### **UH Campus Branch**

Address: 2445 Campus Rd.

Telephone: (808)-973-6211

Website: <https://www.asbhawaii.com>

+Phone Apps available

### **Bank of Hawai'i**

This bank is another option for UH students. However, the closest branch is located in Moilili. It is approximately a 20 minute walk from Moore Hall to S. King St. There is an ATM in Campus Center. For more information check out their website or give them a call.

#### **Moilili Branch**

Address: 2470 S. King St.

Telephone: (808) 973-4460

Website: [www.boh.com](http://www.boh.com)

+Phone Apps available

## **First Hawaiian Bank**

Yet another popular bank in Hawai'i accessible to students is located on S. King St. and Isenberg St. right across from Longs Drugs. They also have an ATM by Campus Center. Another convenient location is in Mānoa Marketplace. Check out their website or give them a call for more information.

### University Branch

Address: 2411 S. King Street

Telephone: (808) 525-7841

Website: [www.fhb.com](http://www.fhb.com)

+Phone Apps available

### Mānoa Branch

Address: 2762 Woodlawn Drive

Telephone: (808) 844-4444

Website: [www.fhb.com](http://www.fhb.com)

+Phone Apps available

## Health Care

### **Health Care Information for Domestic Students**

#### **HMSA (Hawaii Medical Service Association, Blue Cross-Blue Shield of Hawaii)**

This is the medical health insurance company the University has selected for students (if they elect to enroll in this plan). For information on eligibility, enrollment and rates visit:

[www.hmsa.com/portal/student](http://www.hmsa.com/portal/student).

#### **Kaiser Permanente**

This major health insurance company in Hawaii, does not have a student plan associated with the University of Hawai'i. However, individual insurance plans are available. More information can be found at:

<http://individual-family.kaiserpermanente.org/healthinsurance/health-plan-coverage-and-costs/hawaii-health-plan-coverage-and-costs>

#### **Health Insurance Requirements**

Detailed information regarding university health insurance requirements for students and non-student individuals (Scholars or Post-docs) can be found on the University Health Services Mānoa website:

1. Students (Undergraduate, minimum six credits; Graduate, minimum 4 credits)  
<http://www.hawaii.edu/shs/shio.html>
2. Scholars (Post-docs)  
<http://www.hawaii.edu/shs/shio.html>

### **Health Care Information for International Students**

Health care procedures for international students involve additional forms. For more information on these procedures, see the International Student Services (ISS) website

<http://www.hawaii.edu/issmanoa/pages/home/health-insurance.php#uhpolicy>

as well as the University Health Services website <http://www.hawaii.edu/shs/international.html>

#### **University Health Services**

The University has a health center, located on the UH Mānoa campus, that is open to all UH students. Most insurance is accepted for payment, but it would be best to call ahead to check if the health insurance you have is acceptable. The health center provides care in general medicine, dermatology, nutrition, psychiatry, sports medicine, and women's health. The health center also has a pharmacy.

Walk-in medical care is provided for illnesses and injuries. Appointments are advised to see a specialty doctor.

Address: 1710 East West Road  
Honolulu, Hawaii 96822

Phone: (808) 956-8965

Fax: (808) 956-0853

Email: [uhsm@hawaii.edu](mailto:uhsm@hawaii.edu)

#### **Hours of Operation**

Clinic: Monday – Friday: 8:00 am – 12:00 pm, 12:30 pm – 4:00 pm

Reception Desk: Monday – Friday 7:45 am – 4:30 pm

For more detailed information visit their website at <http://www.hawaii.edu/shs/>

## **Emergency Care**

For potentially life-threatening situations, call 911 (off campus). On-campus emergencies, call Campus Security at extension 6-6911.

### **Urgent Care Clinics near UH Manoa**

- **Kahala Urgent Care**  
**Phone: (808) 735-0007**  
4218 Waialae Avenue (Across from Barnes & Nobles - Kahala Mall)  
Honolulu, Hawaii 96816  
Hours: Mon-Fri, 9am-8pm; Sat-Sun, 8am-5pm; Holidays, 9am-5pm
- **The Medical Corner - Waikiki Clinic**  
**Phone: (808) 954-4500**  
1860 Ala Moana Blvd #101  
Honolulu, Hawaii 96815  
Hours: Mon-Fri, 8am-4:30pm; Sat, 9am-12pm; Closed Sundays
- **Doctors on Call - Sheraton Princess Kaiulani Hotel**  
**Phone: (808) 971-6000**  
120 Kaiulani Avenue, Ground Floor  
Honolulu, Hawaii 96815  
Hours: 7 days a week, 24 hours a day

### **Emergency Rooms:**

- **Kapiolani Medical Center for Women & Children**  
1319 Punahou Street  
Honolulu, Hawaii 96826  
(808) 983-6000  
**Emergency Room Phone Number: (808) 983-8633**
- **Straub Clinic & Hospital**  
888 South King Street  
Honolulu, Hawaii 96813  
(808) 522-4000  
**Emergency Room Phone Number: (808) 522-3781**
- **Queen's Medical Center**  
1301 Punchbowl Street  
Honolulu, Hawaii 96813  
(808) 538-9011  
**Emergency Room Phone Number: (808) 691-4311**
- **Kaiser Permanente**  
3288 Moanalua Road  
Honolulu, Hawaii 96819

(808) 432-0000

**After hours advice line: (808) 432-7700 \*For Kaiser patients only**

- **Kuakini Medical Center**  
347 North Kuakini Street  
Honolulu, Hawaii 96817  
(808) 536-2236  
**Emergency Room Phone Number: (808) 547-9540**

**Mental Health Crisis:**

- Hawaii Mental Health Suicide and Crisis Line  
(808) 832-3100
- On-campus students living in the dorms are to see their Resident Advisors (RA) who have phone numbers for the CIR (Counselor in Residence).

**Sex Abuse Treatment Center (24hrs):**

(808) 524-7273

**Hawaii Poison Center:**

1-800-222-1222



## **Groceries**

For those of you who enjoy cooking, there are a ton of markets available within a ten minute walking distance of campus. Longs Drugs (CVS) and Safeway, located in Mānoa Marketplace, offer a multitude of grocery items and everyday necessities. Additionally, for those who wish to purchase vegetarian and organic items, Down to Earth market and Kokua Market are located along South King Street. An additional Longs Drugs is located across the street from Down to Earth as well. For more information on these locations, please consult the following websites:

Mānoa Marketplace:

<http://manoamarketplace.com>

Down to Earth:

<http://www.downtoearth.org>

Kokua Market:

<http://www.kokua.coop/>

Also, for those interested in trying out local produce and dishes, we highly recommend the Farmers' Markets. <http://www.ediblecommunities.com/hawaiianislands/farmers-markets/farmers-markets.htm> There are open and ready all days of the week except on Fridays (see middle column). Our students love the Honolulu Farmers' Market at Neal Blaisdell Center from 4:00 pm to 7:00 pm and the Saturday Farmers' Market at Kapiolani Community College Campus from 7:30 am to 11:00 am.

## **Shopping**

Need a heavier jacket to brave the cold of Hamilton library? Need a new pair of rain boots to battle the incessant rain in beautiful Mānoa valley? Check out the world's largest open air shopping center, Ala Moana Shopping Center. Located approximately fifteen minutes away (by bus) from campus, it offers a wide array of shopping, dining and entertainment venues. For more information, please check out the following link:

<http://www.alamoanacenter.com>

For those with a tighter budget, we recommend the Moiliili Community Center on South King St. (see page 18 for address and contact information) and the on-campus Women's Campus Club ([http://www.hawaii.edu/wcc/thrift\\_shop.html](http://www.hawaii.edu/wcc/thrift_shop.html)) for their secondhand clothes, books, and other small and kitchen appliances. Don't be shy about asking for a student discount at the MCC.

In fact, there are many restaurants and cafes near campus that offer a student discount with a valid ID. Please check with individual establishments. Off the top of our head, we can think of Serg's Mexican Kitchen, Tea Farm Café, and V-Lounge...but there are a lot more.

## Public Services

### **Nearby Post Offices**

800-ASK-USPS® (800-275-8777) / All post offices are closed on Sundays

Mānoa (6 minutes away by bus; Bus #6 across from Moore Hall on Maile Way)

Mānoa Marketplace

2754 Woodlawn Dr Ste 7-101

Honolulu, HI 96822

Mon-Fri: 8:15 am - 3:30 pm

Sat: 8:30 am - 12:00 pm

Makiki (16-18 minutes away by bus; Bus #18 or #4 from bus stop in front of I <3 Yogurt)

1111 Lunalilo St.

Honolulu, HI 96822-9998

Mon-Fri 9:00am - 4:30pm

Sat 9:00am - 2:00pm

Ala Moana (24-30 minutes away by bus; multiple bus stops available)

1450 Ala Moana Blvd. Ste 1006

Honolulu, HI 96814-4688

Mon-Fri 9:00am - 5:00pm

Sat 9:00am - 4:30pm

Moiliili (12 minutes by bus; multiple bus stops available)

2700 South King St. Ste B

Honolulu, HI 96826-3398

Mon-Fri 9:30am - 12:00pm

Sat 1:00pm - 4:00pm

Waikīkī (27-32 minutes by bus; multiple bus stops available)

330 Saratoga Rd

Honolulu, HI 96815-9998

Mon-Fri 9:00am - 4:30pm

Sat 9:00am - 1:00pm

### **Nearby Parks**

- Kapiolani Regional Park  
3840 Pahi Avenue, Honolulu HI 96815
- Makiki District Park  
1527 Keeaumoku Street, Honolulu HI 96822
- Mānoa Valley District Park  
2721 Kaaipu Avenue, Honolulu HI 96822
- McCully District Park  
831 Pumehana Street, Honolulu HI 96826

## **Libraries**

Hawai'i State Library	478 S. King St. Honolulu, HI 96813	586-3500
Library for the Blind and Handicapped	402 Kapahulu Ave. Honolulu, HI 96815	733-8444
Mānoa	2716 Woodlawn Dr. Honolulu, HI 96822	988-0459
McCully-Moiliili	2211 S. King St. Honolulu, HI 96826	973-1099
Waikiki-Kapahulu	400 Kapahulu Ave. Honolulu, HI 96815	733-8488

## **Community Centers**

### **Moiliili Community Center**

2535 South King St Honolulu, Hawaii 96826

Phone: (808) 955-1555 | Fax: (808) 945-7033 | Hours: M-F 8am to 5pm

### **Waikiki Community Center**

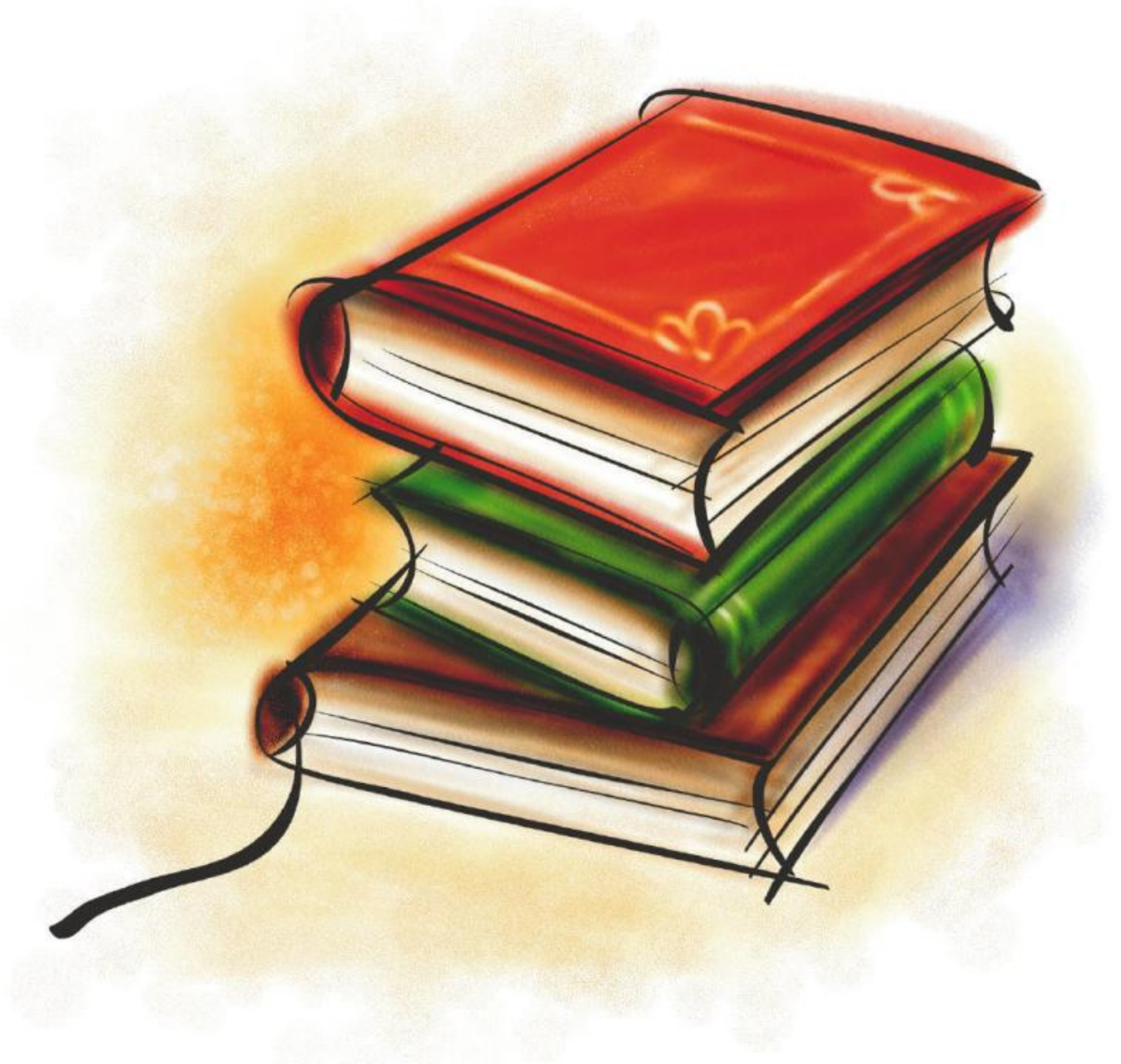
310 Paoakalani Avenue, Honolulu, HI 96815

(808) 923-1802

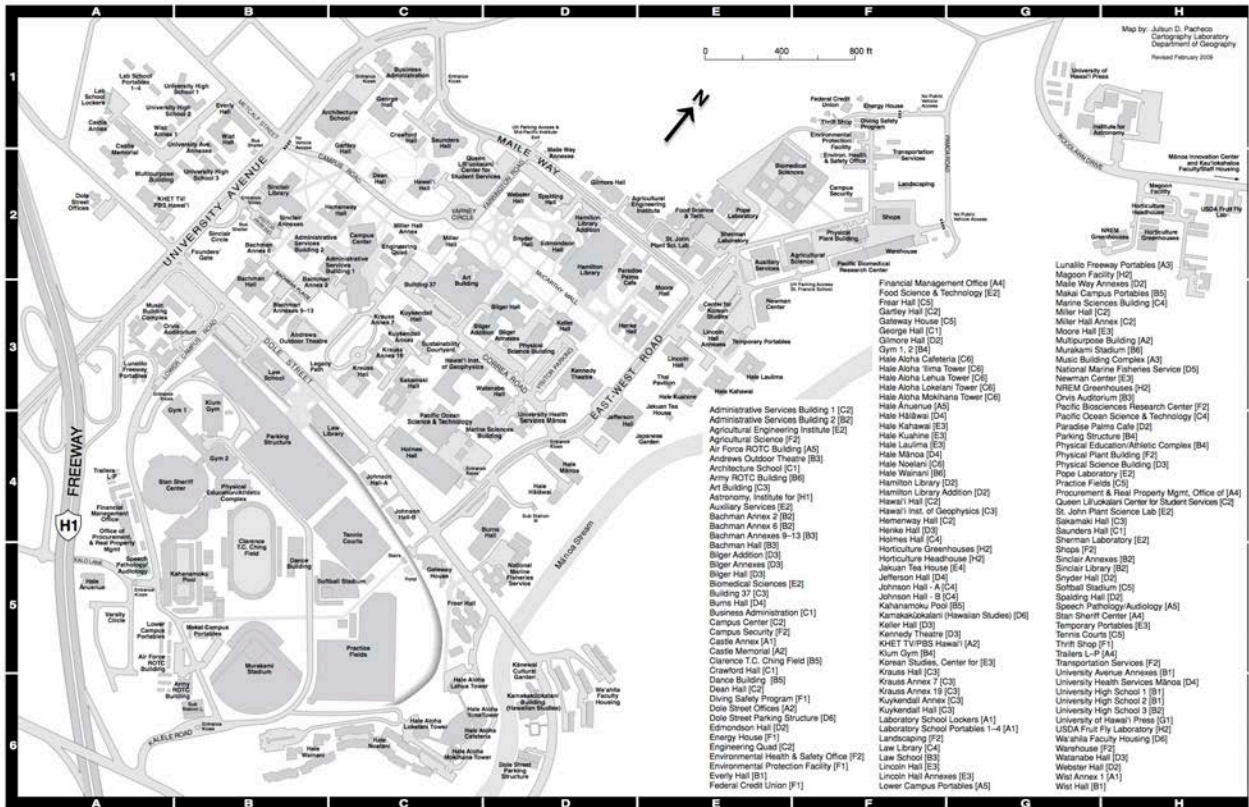
Office Hours: 9 a.m. to 4 p.m., Monday to Friday, closed major holidays and Thursdays

Email: [info@waikikicommunitycenter.org](mailto:info@waikikicommunitycenter.org)

## Part Two: Academics



# Campus Map



Please visit <http://manoa.hawaii.edu/campusmap/uhmmmap.pdf> for an enlarged version!

## Academic Calendar

<b>Fall Semester</b>	<b>FALL 2013</b>	<b>FALL 2014</b>
Official Faculty Duty Start Date	M Aug 19	M Aug 18
Statehood Day	F Aug 16	F Aug 15
First Day of Instruction	M Aug 26	M Aug 25
Labor Day	M Sep 2	M Sep 1
Election Day	N/A	T Nov 4
Veteran's Day	M Nov 11	T Nov 11
Thanksgiving	Th Nov 28	Th Nov 27
Non Instructional Day	F Nov 29	F Nov 28
Last Day of Instruction	Th Dec 12	Th Dec 11
Study Period	F-Sa Dec 13-14	F-Sa Dec 12-13
Examination Period	M-F Dec 16-20	M-F Dec 15-19
Commencement	Sa Dec 21	Sa Dec 20
<b>Spring Semester</b>	<b>SPRING 2014</b>	<b>SPRING 2015</b>
Mid-Year Hire Faculty Duty Start Date	TBD	TBD
First Day of Instruction	M Jan 13	M Jan 12
Martin Luther King Jr. Day	M Jan 20	M Jan 19
President's Day	M Feb 17	M Feb 16
Kuhio Day	W Mar 26	Th Mar 26
Spring Recess	M-F Mar 24-28	M-F Mar 23-27
Good Friday	F Apr 18	F Apr 3
Last Day of Instruction	W May 7	W May 6
Study Period	Th-F May 8-9	Th-F May 7-8
Examination Period	M-F May 12-16	M-F May 11-15
Commencement	Sa May 17	Sa May 16
Official Faculty Duty End Date	S May 18	S May 17
<b>Summer Session I</b>	T May 27 - Th Jul 3	T May 26 - Th Jul 2
Memorial Day	M May 26	M May 25
Kamehameha Day	W Jun 11	Th Jun 11
Independence Day	F Jul 4	F Jul 3
<b>Summer Session Term II</b>	M Jul 7 - Th Aug 14	M Jul 6 - F Aug 14

Please visit <http://manoa.hawaii.edu/ovcaa/calendar.htm> to check for any changes.

## Important Dates

<p>UH Mānoa Fall 2013 Calendar:  <a href="http://manoa.hawaii.edu/records/calendar/fall_2013.html">http://manoa.hawaii.edu/records/calendar/fall_2013.html</a></p>	
<p>Housing -- Priority Registration Deadline            Graduate Housing: <a href="http://manoa.hawaii.edu/housing/familygrad/applygrad">http://manoa.hawaii.edu/housing/familygrad/applygrad</a></p>	<p><b>May 1st, 2013</b>            Applications received after this date will be processed by date of receipt</p>
<p>Health Clearance            University Clinic: <a href="http://www.hawaii.edu/shs/">http://www.hawaii.edu/shs/</a>            Health Clearance FAQ:  <a href="http://www.hawaii.edu/shs/images/FAQs%20health%20clearance%20requirements.pdf">http://www.hawaii.edu/shs/images/FAQs%20health%20clearance%20requirements.pdf</a></p>	<p>Received by  <b>July 15</b></p>
<p><u>Registration Timetable</u>            The MyUH Registration Timetable with Registration Assignments for Incoming UH Manoa students and All Unclassified UH Manoa students will be posted online by 7/29            Registration timetable for Incoming Students:  <a href="http://myuhinfo.hawaii.edu/object/uhmtimetable.html">http://myuhinfo.hawaii.edu/object/uhmtimetable.html</a></p>	<p><b>Available by            July 29</b></p>
<p><u>Registration Assignments</u></p>	<p><b>August 14 to 15</b> (subject to change)            Registration continues until August 18.</p>
<p>Continued Registration for All Incoming and Continuing Students (no late fee)</p>	<p>August 19 to 25</p>
<p>Late Registration (single \$30 system-wide fee):</p>	<p>August 26 to September 4 at 4:00 pm (HST)</p>

Last day to drop courses/switch sections without "W" grade	Tuesday, September 3
<ul style="list-style-type: none"> <li>• Payment receipt deadline for registration transactions completed August 14 to September 4 until 4:00 p.m.</li> <li>• Last day to register/add courses/change grading option</li> <li>• Last day for 100 percent tuition refund</li> </ul>	Wednesday, September 4 (4:00pm HST)
<p>UH Mānoa Graduate Division Orientation</p> <p>Graduate Division: <a href="http://manoa.hawaii.edu/graduate/">http://manoa.hawaii.edu/graduate/</a></p>	TBA
<p>SLS Department Orientation</p> <p>SLS Department: <a href="http://www.hawaii.edu/sls/sls/">http://www.hawaii.edu/sls/sls/</a></p>	TBA
SLS Department Retreat	TBA



## SLS Faculty & Staff

### Faculty

Name	Academic Title	Phone	Email
Bley-Vroman, Robert	Current Dean, College of LLL	808-956-8517	<a href="mailto:vroman@hawaii.edu">vroman@hawaii.edu</a>
Brown, James Dean	Professor	808-956-2783	<a href="mailto:brownj@hawaii.edu">brownj@hawaii.edu</a>
Crookes, Graham	Department Chair; Professor	808-956-6046	<a href="mailto:crookes@hawaii.edu">crookes@hawaii.edu</a>
Davis, Kathryn	Professor	808-221-8422	<a href="mailto:kathrynd@hawaii.edu">kathrynd@hawaii.edu</a>
Day, Richard	Professor	808-956-2788	<a href="mailto:rday@hawaii.edu">rday@hawaii.edu</a>
Gilliland, Betsy	Assistant Professor	808-956-2786	<a href="mailto:egillila@hawaii.edu">egillila@hawaii.edu</a>
Grüter, Theres	Assistant Professor	808-956-5885	<a href="mailto:theres@hawaii.edu">theres@hawaii.edu</a>
Higgins, Christina	Associate Professor	808-956-2785	<a href="mailto:cmhiggin@hawaii.edu">cmhiggin@hawaii.edu</a>
Hudson, Thom	Professor	808-956-2795	<a href="mailto:tdh@hawaii.edu">tdh@hawaii.edu</a>
Kasper, Gabriele	Graduate Chair; Professor	808-956-8610	<a href="mailto:gkasper@hawaii.edu">gkasper@hawaii.edu</a>
Onnis, Luca	Assistant Professor	808-956-2782	<a href="mailto:luca@hawaii.edu">luca@hawaii.edu</a>
Schmidt, Richard	Emeritus Professor		<a href="mailto:schmidt@hawaii.edu">schmidt@hawaii.edu</a>
Schwartz, Bonnie	Professor	808-956-4916	<a href="mailto:bds@hawaii.edu">bds@hawaii.edu</a>
Zheng, Dongping	Assistant Professor	808-956-9537	<a href="mailto:zhengd@hawaii.edu">zhengd@hawaii.edu</a>

### Staff

Name	Title	Phone	Email
Harsch, Kenton	ELI Director, Undergraduate Coordinator and Advisor	808-956-6946	<a href="mailto:kenton@hawaii.edu">kenton@hawaii.edu</a>
Faucette, Priscilla	ELI Associate Director, Undergraduate Advisor	808-956-2801	<a href="mailto:faucette@hawaii.edu">faucette@hawaii.edu</a>
Kim, Teri	ELI Secretary	808-956-8610	<a href="mailto:mk3@hawaii.edu">mk3@hawaii.edu</a>
Matsumoto, Karen	Department Secretary	808-956-8610	<a href="mailto:karenmat@hawaii.edu">karenmat@hawaii.edu</a>
Weaver, Joel	HELP Director	808-956-6636	<a href="mailto:joelw@hawaii.edu">joelw@hawaii.edu</a>
Guro, Chris	HELP Assistant Director	808-956-9909	<a href="mailto:cguro@hawaii.edu">cguro@hawaii.edu</a>
Sakoda, Kent	Sato Center Assistant Director	808-956-6045	<a href="mailto:sakoda@hawaii.edu">sakoda@hawaii.edu</a>

## SLS Courses

### Course Descriptions

Below is a list of all the courses in SLS with their descriptions. These can also be found at [http://www.hawaii.edu/sls/sls/?page\\_id=113](http://www.hawaii.edu/sls/sls/?page_id=113)

Courses that are offered in the Fall and Spring semesters of the upcoming academic year can be found at [http://www.hawaii.edu/sls/sls/?page\\_id=111](http://www.hawaii.edu/sls/sls/?page_id=111)

To view the class time and availability, please visit:  
<https://www.sis.hawaii.edu/uhdad/avail.classes?i=MAN>

You may take courses outside of department (e.g., Linguistics, Educational Psychology, etc.), but please make sure to discuss possible courses with your advisors – otherwise, it may not count towards your degree requirements.

#### **SLS150 Learning languages and communicating in a globalized world**

SLS 150 surveys a range of topics that will improve individuals' abilities to learn and use a second language and to interact successfully with second language speakers. Reflecting recent developments of second language use across cultures and nations, studies of second language learning, use, and instruction have become oriented toward the pluricultural, globalized world of the 21st century, in which using more than one language is the norm; in which a person's identity is partly influenced by their command of one or more languages, and in which learning (and teaching) an additional language facilitates employment, international mobility, and the development and maintenance of cross-cultural relationships. This course provides students with concepts and strategies for acquiring and using an additional language in an increasingly multilingual world, with a particular focus on learning languages spoken in the Asia-Pacific region. In addition, the course provides students with the opportunity to develop cross-cultural communication skills for use with second language speakers. The course engages with second language learning for transnational employment environments, consumption of mass media, and use in academic contexts. The course relates to a world in which English is presently the dominant international language and lingua franca, representing sites of power and of resistance as well as constituting the dominant language of entertainment and the mass media. It also addresses new trends concerning other powerful international languages especially those of the Asia-Pacific region.

#### **SLS302 Second Language Learning**

This course provides students with a broad overview of theories and issues in the field of second language acquisition (SLA) and prepares them for more advanced courses in the undergraduate SLS curriculum. It will cover 1) first language acquisition, 2) theories in SLA, 3) factors affecting SLA, 4) learner language, and 5) instructed SLA.

#### **SLS303 Second Language Teaching**

Assuming the theoretical foundations of SLS 302, this course surveys current theories, research, and practices in second and foreign language teaching. It will provide you with a broad overview of language teaching methodology and teaching contexts. Subjects covered include development of teaching methods in language skills (i.e., listening, speaking, writing, reading, grammar, and vocabulary) / integrated language skills, developments of teaching materials and technology, classroom observation, syllabus designing, lesson planning, and assessing language skills.

### **SLS312 Techniques in Second Language Teaching: Reading & Writing**

This course is an overview of the theoretical and practical issues involved in the teaching of second or foreign language (L2) reading and writing. The theoretical aspects of the course are integrated with empirical research findings as well as practical concerns and experiences including observation, classroom techniques, and material design. The goals of the course include providing students with opportunities to evaluate materials; to prepare lesson plans and activities; and to observe L2 reading and writing lessons in L2 classrooms.

### **SLS313 Techniques in Second Language Teaching: Listening & Speaking**

This course provides an overview of the theoretical and practical issues involved in the teaching of second or foreign language (L2) listening and speaking. The theoretical and empirical perspectives are integrated with practical experiences including classroom observation, teaching practices as well as material development and analysis.

### **SLS380 Bilingual Education**

*Survey and analysis of current thinking and practices in bilingual/bicultural education; special emphasis on ESL/EFL. Pre: 302, or Ling 320, or graduate standing.*

The course examines approaches and pedagogical issues relevant to bilingual education. It then examines social psychological and sociological perspectives on bilingual education and psycholinguistic and pedagogical issues relevant to bilingual education.

### **SLS418 Instructional Media**

*Theoretical and practical applications of using electronic and social media in second language teaching. Pre: 303 or graduate standing.*

The objectives of this course are to familiarize students with developments in the use of audio visual and especially electronic media (internet and other on-line applications) for second language teaching and the potential of different instructional technology for second language learning.

### **SLS430 Pidgin and Creole English in Hawaii**

*Major historical, descriptive and pedagogical aspects of English in Hawaii; pidgin and creole languages, linguistic change, language variation. Work with actual language data. Laboratory work required. Pre: 302 or Ling 102 or graduate standing.*

This course provides a general understanding of the sociohistorical background and linguistic structure of both Hawaii Pidgin English (HPE) and Hawaii Creole English (HCE). It also addresses the question of language attitudes, language education and literary heritage. Present day attitudes in the school system and community toward HCE receive particular attention.

### **SLS441 Language Concepts for Second Language Learning and Teaching**

*Language analysis: phonology, syntax, semantics, discourse, for teaching second languages. Pre: 302 or Ling 102, Ling 320, graduate standing, or consent.*

This course introduces the fundamental concepts of linguistics, including those of phonology, morphology, syntax, semantics, and discourse structure, with a focus on their relationship to the study of second language acquisition and to the teaching of foreign or second languages. It surveys a wide range of such concepts and includes a discussion of different approaches to the study of language, including especially those which emphasize its communicative and social function.

### **SLS460 English Phonology**

*Basic course in English phonetics and phonology; emphasis on areas of interest to language teachers. Pre: 302 or graduate standing.*

This course is important to future language teachers in that it exposes them to a systematic examination of sound systems in general and English in particular. The course aims to sensitize participants to the intricacies of phonological systems, preparing them to look critically at the teaching and learning of pronunciation. Moreover, the course aims to increase awareness of the relationships between sound systems and writing systems.

### **SLS490 Second Language Testing**

*Measurement and evaluation of achievement and proficiency in second language learning. Pre: 302, 441, LING 102, or graduate standing.*

This course is intended to provide a working knowledge of the basic principles and procedures for test construction and testing with an emphasis on the second language context. Participants review a variety of first and second language tests including standardized tests, integrative language tests, discrete-point tests, and tests of communicative competence. Participants also construct and try out some of their own tests. No previous knowledge of statistics or higher mathematics is required. Students will learn the necessary statistical procedures to use in “testing the test” and will develop the skills needed to read test manuals with understanding.

### **SLS600 Introduction to Second Language Studies**

*Introduction to basic professional and research issues in second language studies; integration of theory, research, and practice for prospective SLS teachers and researchers. Pre: Graduate standing.*

This course introduces the fundamental professional concerns and research approaches in applied linguistics for language teaching and learning. It initiates the graduate student into professional training, showing how to integrate theory, research, and practice. Basic principles of research methodology are introduced and applied to problems in the study of second language pedagogy, second language use, second language analysis, and second language learning. Key concepts and terminology are elaborated on.

### **SLS610 Introduction to Second Language Teaching**

*Analysis of methods; implications of recent and current research.*

This course is a critical survey of the field of methodology in second language teaching. The course examines approaches to different issues in teaching, theoretical foundations to language teaching and the methodological principles and procedures derived from them as well as a host of unresolved issues. The course does not espouse any particular approach to second language teaching but rather presents an overview of the many approaches to teaching second and foreign languages.

### **SLS612 Alternative Approaches to Second Language Teaching**

*Examination, comparison with conventional approaches interpersonal relationships in language teaching. Pre: 600.*

This course aims to develop a theoretical understanding of and practical experience with several approaches to learning and teaching a second/foreign language. Sessions on such approaches as Silent Way, Community Language Learning, Suggestopedia, Comprehension Approach, Total Physical Response, and Natural Approach, are examined from a learner’s viewpoint so that participants have the opportunity to criticize the approaches and to assess their applicability to language instruction at various levels. The course also briefly examines humanistic and drama approaches, and compares the tenets of conventional teaching approaches with unconventional ones.

### **SLS613 Second Language Listening & Speaking**

*Key issues; overview and critique of published materials; practice in developing syllabi and other materials. Pre: 600.*

The course focuses on the theoretical and practical aspects of teaching the listening and speaking skills to second language students by examining such topics as the components of conversational competence, approaches to developing a curriculum for the speaking skills, developing learning tasks, methodological issues, use of questions in the classroom, the role of dialogs, group work, games, and role plays. In the area of listening other topics include the process of listening, methodological principles, listening to narratives, conversations, monologs, and lectures. A section is devoted to evaluating materials and the classroom activities which have been discussed.

### **SLS614 Second Language Writing**

*Problems in teaching of second language composition. Survey of materials; use, modification and development. Error analysis. Pre: 600.*

The course aims to provide insights into the theory of teaching writing from both a process and a product perspective, with particular emphasis on the problems faced by student writers composing in a second language. Critique of different approaches to the teaching of writing to both second and foreign language students is included as well as consideration of the difficulties in evaluating student writing.

### **SLS618 Language and Learning Technologies**

What is language? How do we understand language and language learning in the light of learning technologies? How do we make sense, make meaning and realize values when technologies are involved in the learning environment. Learning technologies, ranging from vernacular use of Skype to sophisticated virtual world technologies, bring us new challenges and opportunities for communication and social networking. In this course, 1. We will explore Dialogical definition of language and its implications for sharing, co-construction, co-authoring and co-creation of identity and meaning in technology supported learning environments 2. We will design, and conduct studies of a specific technology that you are interested in. A range of research questions are encouraged by using quantitative survey methods, ethnography, discourse analysis, conversation analysis and multimodal analysis.

### **SLS620 Second Language Reading**

*Survey of research in reading process; teaching methodology; psycholinguistic investigations; comparison of reading in first and second languages. Pre: 600.*

This course examines theory and research in the acquisition and practice of reading in a second language. It explores the influence on second language reading skills of social, psychological, and linguistic factors. Various approaches to training learners in these skills are considered, and a variety of teaching materials and classroom practices are reviewed and evaluated.

### **SLS630 Second Language Program Development**

*Designing, implementing, and evaluating language programs; systems-based approach to program and curriculum development. Pre: 600.*

The course offers a sound knowledge base in: the history of curriculum design in language programs; the systems approach to language curriculum design, implementation and maintenance; language needs analysis; goals and objectives for language programs; language testing for norm- and criterion-referenced purposes; choosing, adapting and creating language materials for a specific program; teaching in a systems approach language curriculum; evaluation at the program level for improvement and maintenance of curriculum.

### **SLS631 Second Language Program Evaluation**

Program evaluation plays a variety of roles in education and society, though it is often narrowly construed as an external accountability mechanism only. In language education, as well, program evaluation has the potential to do considerable good or bad, depending on how (and in whose interests) it is designed,

implemented, and utilized. Good or not, demands for language educators to engage in program evaluation are on the increase—therefore, it is essential that we be prepared to respond in ways that benefit language learners and other stakeholders, that help us to perpetuate and improve our language education efforts, and that enhance the vitality of language programs in education and society. In this course, participants will explore the potentials and pitfalls of evaluation, with a primary focus on language program improvement, and they will develop the basic knowledge and skills to design effective evaluations at the classroom, curricular, institutional, and societal levels. Course topics include: (a) the contribution of program evaluation in language education thus far; (b) major language program evaluation projects that have been undertaken in recent history; (c) the critical need for evaluation as a way of focusing practice-relevant L2 instructional research; (d) useful evaluation models, from program-theory to empowerment to utilization-focused; (e) standards of evaluation; (f) the paradigms debate and pragmatic resolution in contemporary practice; (g) the extensive array of epistemologies and methods available to evaluators (bridging the ‘qualitative’ to ‘quantitative’ spectrum); and (h) the importance of values and politics in language education, and how program evaluation deals with these tricky societal forces. Readings are primarily from a course text. As befits a graduate course, participants will contribute extensively to class sessions, in the form of discussions, presentations, and workshops. Participants will also complete an evaluation project in association with a language program context of their choosing.

#### **SLS640 English Syntax**

*English clause structure in relation to second language learning and teaching. Pre: 441, 600, consent.*

In this course the structure of English is examined in considerable detail. The course is intended to deepen the student’s understanding of important areas of English grammar and to develop competence in grammatical analysis and explanation in the context of teaching English as a second/foreign language.

#### **SLS642 Comparative Grammar and SLA**

*Comparative study of structures of two or more languages; native speaking informants used.*

*Consideration of language transfer in second language learning, role of typological features. Pre: 460, 441, or Eng 401.*

The objectives of this course are to provide practical experience in analyzing a language or languages other than English through work with a native informant, and to gain experience in techniques of linguistic field work, such as selective listening, translational, interactive and analytic elicitation. It also aims to increase awareness of the diversity of languages and of linguistic universals, through systematic comparison of languages, and to increase knowledge of the structure of languages by comparison with other languages. The knowledge thus gained should result in an increase in sensitivity to problems that nonnative speakers might encounter in learning a second language.

#### **SLS650 Second Language Acquisition**

*Theory and research. Pre: 600.*

The general aims of this course are to review current theory and research in second language acquisition (with some attention to related work in first language acquisition) and to explore relationships between such work and classroom second language learning and teaching. Course members are introduced to the major theoretical issues in the field, the principal areas of research, and the major methodologies available.

#### **SLS660 Sociolinguistics and Second Languages**

*Theoretical and practical aspects of language, culture, society and TESOL. Pre: 600.*

This course covers basic concepts and issues in sociolinguistics, broadly defined, with a substantial focus on second language learning and teaching. Perspectives include the sociology of language, the ethnography of communication, interactional and variational sociolinguistics, pragmatics, and discourse

and conversational analysis. Course activities include substantial reading and discussion, small-scale fieldwork exercises, and a research paper consisting of a literature review and a design for an empirical study.

### **SLS670 Second Language Quantitative Research**

*Qualitative and quantitative research methods; design of research studies; techniques in collecting data; statistical inference, and analysis and interpretation of data. Pre: 490, 600, and graduate standing.*

The purpose of this course is to train students to read research reports critically, to master a variety of skills needed to conduct meaningful research in SL/FL situations, and to gain an understanding of the value of reading and conducting research as a crucial part of one's continuing professional development. Design of research, hypothesis construction, data collection procedures, statistical analyses and interpretation, are included. The design and conduct of a research study and computer-based data analysis are required.

### **SLS671 Research in Language Testing**

*Advanced issues in language testing research including recent developments in the following areas: language testing hypotheses, item analysis, reliability, dependability, and validity. Pre: 490 or consent of instructor.*

This course will explore advanced issues in language testing research. Students will learn theoretical concepts that are applicable to language testing problems. The following general areas will be covered: overview of advanced language testing hypotheses, advanced concepts for item analysis, test consistency from diverse perspectives, and innovative techniques for establishing test validity.

### **SLS672 Second Language Classroom Research**

*Survey of research on second language classrooms and analysis of methodological issues. Pre: 600.*

This course familiarizes students with the history and development of classroom-centered research on second language learning: with methodological issues, with substantive findings in the field, and with current lines of research. These goals are achieved through a combination of readings, discussions, in-class data analysis, and execution of an original research project, by participants.

### **SLS673 Applied Psycholinguistics and Second Language Acquisition**

*Theory and research in psycholinguistics as related to second language perception, production, acquisition, and instruction. Pre: 441 or Ling 422.*

This course investigates the nature of second language learning and teaching from a psychological perspective. Emphasis is placed on general principles of psychology which have relevance for the design, execution, and evaluation/interpretation of second language teaching and research. The course deals with the processes of linguistic performance (i.e., comprehension and production) as they relate to second language learning and teaching. Of particular importance to these processes are the perception of the target language by the nonnative speaker; how second language learners comprehend the target language (i.e., the role of syntax and semantics); the role of memory in second language learning; and the role of discourse plans and production models for second language performance.

### **SLS674 Survey Research Methods in Second Language Studies**

This course examines the procedures used in carrying out survey research projects for both curriculum development and research purposes. Survey research will be defined here as any investigation in applied linguistics based on interview or questionnaire procedures, whether open-ended or closed-response. The course will cover the basics of survey research including at least the following topics: how to plan a survey project, how to create sound interview or questionnaire instruments, how to administer those instruments, how to compile the survey information, how to analyze the information (quantitatively and

qualitatively), and how to report the results. Opportunities will be provided for practical hands-on experience in developing surveys and analyzing the results of those surveys. Examples will be drawn from survey research projects the professor has been involved in over the years.

### **SLS675 Second Language Qualitative Research**

*Philosophical and theoretical aspects of second language interpretive qualitative research. Pre: 600 and 660 or consent.*

This course will involve an examination of the philosophy and theories which inform second language interpretive qualitative research. Course participants will examine questions such as: What is interpretive qualitative research? How do social and cultural theories inform second language qualitative studies? What are the principle philosophical and methodological considerations involved in conducting qualitative studies? Students will read and discuss a wide range of literature concerning interpretive qualitative research, including theoretical and methodological overviews as well as ethnographies/qualitative studies dealing with second language issues.

### **SLS676 Interpretive Qualitative Inquiry**

This course explores a range of qualitative inquiry methods and theories related to second language studies. Through a project-based approach, students will develop and carry out inquiry relevant to their own interests, immediate learning/teaching needs, and long term professional goals. The format and hands-on nature of the course encourages students to engage in collaborative inquiry and draw on multiple resources, such as other SLS courses, cross-disciplinary expertise, and community knowledge. Interpretive qualitative inquiry assumes investigations within local social and cultural contexts as impacted by global factors such as national policies, transnationalism, and technology.

### **SLS680 Topics in Second Language Acquisition**

*Variable topics in special areas of second language studies. Pre: prior course work in relevant areas.*  
680E: Second Language Learning—psychological and social principles underlying second language acquisition. Pre: 650.680N: Second Language Analysis—linguistic analysis of second language performance. Pre: 640.680P: Second Language Pedagogy—topics in L2 teaching, curriculum development, program administration, and assessment. Pre: 600.680R: Second Language Research—approaches to conducting research in L2 acquisition, use, instruction, assessment, and analysis. Pre: 670, 675, or other relevant introductory research methods course.680U: Second Language Use—use of second languages in social contexts. Pre: 660.

### **SLS680E Second Language Learning**

This course will change each time it is offered depending upon the particular topic areas of second language learning.

### **SLS680N Second Language Analysis**

This course will change each time it is offered depending upon the particular topic areas of second language analysis.

### **SLS680P Second Language Pedagogy**

This course will change each time it is offered depending upon the particular topic areas of second language pedagogy.

### **SLS680R Second Language Research**

This course will change each time it is offered depending upon the particular topic areas of second language research.



### **SLS680U Second Language Use**

This course will change each time it is offered depending upon the particular topic areas of second language use.

### **SLS690 English Teaching Practicum**

*Practice teaching in an ESL classroom under supervision. Pre: 600, 610, advancement to candidacy, and consent.*

This course is divided into two aspects: practice teaching and discussion. Each participant is assigned to a cooperating (“master”) teacher who involves the student in all aspects of teaching a particular ESL course. Cooperating teachers are located at such institutions as the University of Hawaii, Honolulu Community College, Kapi`olani Community College, Hawaii Pacific University, public schools, etc. In addition, course members meet in regularly scheduled sessions to discuss language teaching practices in general and their individual teaching experiences in particular.

### **Seminar Courses**

#### **SLS730 Seminar in Second Language Education**

*Current issues and problems. Pre: 600, advancement to candidacy, and consent.*

Recent topics include: computer-assisted language learning, materials design in SLS; languages for specific purposes; literature and L2; task-based language teaching; academic L2 writing.

#### **SLS750 Seminar in Second Language Acquisition**

*Issues in theory and research in second language acquisition. Pre: 650 or Ling 470 or consent.*

Recent topics include: motivation and second language learning; cross-linguistic influences in SLA; task-based language learning; universals and SLA, instructed SLA; consciousness and SLA; Distributed Language and Multimodal Analysis.

#### **SLS760 Seminar in Second Language Use**

*Theory and data-based research in second language use. Pre: 660 or consent.*

Recent topics include: indigenous language revitalization; language and discrimination in the workplace; language policy and language planning; cross-cultural pragmatics; discourse in institutions.

**SLS 775 Seminar in Second Language Qualitative Research (3)** Qualitative research in second language and multilingual contexts. *Pre: 675 or consent.*

## **Differences between the MA thesis and SP**

A message from Dr. Graham Crookes, Department Chair

Faculty members have often been asked to address the differences, pros and cons, of these two possibilities, ever since the Scholarly Paper (SP) was introduced as a replacement for a graduating exam at the MA level, back in 1983.

Basically, as is clear from the descriptive material about each that is on the Departmental website, the SP is a smaller piece of work than the Thesis. And it doesn't carry any course credit. So if you want to have as many courses as possible within your MA (though remember you can always stay longer and go over the minimum credits) then you presumably will choose the SP. And on the other hand, if you are strongly focused on a particular area of scholarly or professional interest and really want to explore it in depth, then you might well choose the MA.

The MA thesis is accompanied by some administrative steps that are not present for the SP, and they present experiences that could be useful if a student were definitely going on to a doctorate, either immediately or at some time in the future. So, there is a committee of three faculty to be formed: one chair and two others. This involves a bit more interpersonal negotiation than is necessary for an SP, and there is a formal proposal step -- the MA proposal has to be agreed by the three, who then are formally constituted as the student's committee. And in due course, there is a public defense of the thesis, usually a couple of hours with a presentation in front of the committee and a small audience of friendly students; the candidate is grilled by the committee in front of the audience, who also may ask questions. And then (we hope) the thesis is approved, usually with some corrections and modifications to be made. The final work is lodged with Graduate Division and eventually shows up in the University of Hawai'i library. So this is clearly something that takes time, is more formal, and has essential administrative steps which are generally made or taken in person.

The SP doesn't have this public quality. It is often based on an existing term paper which is developed. Thus there isn't an obvious proposal stage. There are two readers, and if the term paper had been done for a faculty member for a specific course, most likely that would be the same person who would be the first reader. This seems easier in terms of relationships established; and usually the first reader will tell the student who the second reader will be, based on his/her knowledge of availability and interest. The readers will read one or more drafts and provide feedback. There is no public defense. When the readers are satisfied, they pass this finding to the Graduate Chair or other record keeping person, and a copy is held in Departmental archives and made available in the Reading Room or through requesting it from whoever is handling the archive of Scholarly Papers at that time (Chair, Assistant to Chair, or possibly Reading Room supervisor). In the absence of any public defense, it is easier to handle this process electronically or at a distance.

This is an informal account, in keeping with the spirit of the Student Handbook. For more comprehensive and official accounts, please check the Department website.

## To sum it up...

Master's Thesis	<ul style="list-style-type: none"><li>• Good for those with concrete projects, specific interests, or ideas coming in</li><li>• Requires long-term commitment and planning</li><li>• Can help prepare students for PhD dissertation process</li><li>• Great practice and opportunity to answer questions on your work</li><li>• Thesis counts towards degree credits</li></ul>
Scholarly Paper	<ul style="list-style-type: none"><li>• Length is ideal for publication</li><li>• More classes to take and choose from (breadth)</li><li>• Fewer stages: usually one draft submission, one final deadline</li><li>• Can be developed from a term paper</li><li>• Does not need to be a research-based, empirical paper</li><li>• Can be a literature review (but we don't recommend that!)</li><li>• Will not potentially harm chances for PhD admission</li><li>• Can be used as a possible writing sample submission for PhD applications</li></ul>

## **SLSSA**

“Second Language Studies Student Association (SLSSA) is an organization in the Department of Second Language Studies at Mānoa. SLSSA is pronounced ['sʌlsə] as in “salsa” the tomato-based sauce. We organize monthly coolers, academic workshops, annual retreats and a peer mentoring service (Peeps). There are many benefits to being a SLSSA member! The benefits of joining SLSSA include but are not limited to free food and drinks at all monthly coolers, a discount on the annual SLSSA retreat and department t-shirts, and 200 free copies/prints per month on the SLSSA printer in the Reading Room.

Please visit our SLSSA website (<http://blog.hawaii.edu/slssa/>) and the Facebook page (<https://www.facebook.com/groups/119838615404/>) to see more details.

## **Peeps**

Peeps is a mentor-mentee program that SLSSA has been encouraging students to join for as many semesters back as we can remember. The idea behind this program is that more advanced (even second-year) students help new students find their way around SLS. SLSSA sends out a form asking those who want to get involved what their preferences are and it does its best to pair people with the same interests and availability. Mentees have asked questions ranging from housing to writing abstracts and everything in between. Mentors have provided information from which classes work best together to which restaurants serve the best udon. Getting involved with peeps is a fun and helpful way of getting more out of our program and adding to the camaraderie of the SLS ohana.

## SLSSA – sponsored student mentoring program: SLS Peeps!

**New students:** Want to know how to enjoy your life in Hawaii? Wondering how to handle your studies? Curious how students chose SP topics? Sign up for the SLS peer mentoring program, SLS Peeps! SLSSA will match you with senior students, and you'll get a chance to find out tips for surviving the SLS program. Sign up to get personal advice from senior students!

**Returning students:** Remember the time when you entered the SLS program? Were you nervous and anxious about everything? Share your wisdom with incoming students! Sign up as a mentor to help new students adjust to life in SLS (and Hawaii). All you need to do is to chat over coffee or lunch with your mentee and answer some of the questions your mentee may have. You can also invite your mentee to social gatherings! It's a great way to get to know new students in our

### SLS Peeps! Application form

( ) **Mentor (returning student)**   ( ) **Mentee (new student)**

Name: \_\_\_\_\_ E-mail: \_\_\_\_\_

Telephone number: \_\_\_\_\_

1. Gender:        ( ) Female   ( ) Male

2. I am in the . . . ( ) MA program   ( ) AGC program   ( ) PhD program

3. I am currently pursuing or planning to pursue the following SLS concentration:

- ( ) Second language acquisition
- ( ) Language and social interaction
- ( ) Language teaching
- ( ) Language assessment, measurement and program evaluation
- ( ) Critical second language studies
- ( ) No concentration or I don't know yet

4. Mentor/mentee gender preference: ( ) Same gender   ( ) Doesn't matter

5. What does your fall semester schedule look like? Put a ✓ when you are available to meet your mentor mentee on campus.

	Mon	Tues	Wed	Thurs	Fri
Morning					
Lunch					
Afternoon					
After 4 PM					

## Student Information

### University Health Services

There are many services offered at the University Health Services, such as General Medical, Dermatology, Nutrition, Psychiatry, Sports Medicine, and Women's Health. The General Medical Clinic is open Monday through Fridays from 8:30 am to 12:00 pm and 12:30 pm to 4:00 pm. The clinic is closed on holidays. Walk-ins are accepted. Referrals and appointments are required for the other services. Please call (808) 956-6221 or visit the website <http://www.hawaii.edu/shs/> for more information.

Insurance is accepted. Students without insurance will need to pay their fees in form of cash or credit card before leaving the University Health Services (typically \$12-28 for General Medical Clinic visits). If you are interested in signing up for UH student insurance, please visit [www.hmsa.com/portal/student](http://www.hmsa.com/portal/student). Health insurance (whether UH's or private) is mandatory for international students.

Important: You may not register for classes until you have received health clearance. The requirements for health clearance are 1) submit health clearance form, 2) comply with state tuberculosis clearance guidelines, and 3) provide documentation of immunity to measles, mumps and, rubella (MMR). The University Health Services offers the TB tests during normal clinic hours except on Thursdays. The MMR immunizations are offered during normal clinic hours from Tuesday to Friday. No appointments are necessary. Completed health clearance forms can be faxed to: (808) 956-3583. For more information, please click on the "HEALTH CLEARANCE" link on the left of the website's homepage.

### Student ID and Validation

All new, incoming students are entitled to one University of Hawai'i ID card at no charge. The ID card entitles students to certain university privileges and benefits.

All ID cards are issued at the Campus Center Ticket, Information & ID office, which is conveniently located in Campus Center 212 (near Subway). The ID card entitles students to certain university privileges and benefits. ID cards are issued during normal business hours, Monday through Friday, 8:30 am – 4:30 pm, except on holidays. ID card applications are available at the office and online at <http://www.hawaii.edu/campuscenter/services/documents/UHMstudentIDApplication041511.pdf>. Please make sure to bring a valid photo ID (driver's license, state ID with expiration date, passport, etc.)

Student ID cards need to be validated each semester you are enrolled. To obtain validation, you will need to pay your current semester tuition and fees in full, and have no financial obligations or holds (i.e., library fines, parking tickets). Students who have signed up for the payment plan or who have been awarded and accepted financial aid are eligible to get their IDs validated. Please check your MyUH Portal account for payment status and information on holds.

#### So, why should you get a validated ID card?

- Borrowing privileges at Hamilton and Sinclair Libraries, including Reserve Room, CLIC Lab, and Wong Audio-Visual Center.
- Participation in Student Recreation Services Programs, which includes:
  - Equipment Rentals
  - Student Fitness Center

- Duke Kahanamoku Swimming Pool
- Klum Gym
- Tennis Courts
- Discounts for outdoor and leisure classes
- Discount Athletic Tickets
- Discounts on services at the Ticket, Information & ID Office, including:
  - Discounted movie passes
  - Discounts on various concert tickets at Kennedy Theater and Outreach College
  - Fax and Lamination services
  - Passport Photos
- U-Pass (Bus pass for TheBus)
- Software discounts at the Bookstore

If your ID card is lost or stolen, a replacement ID card can be issued. There is a replacement fee of \$15.00 assessed for all ID cards that need to be reissued. A new ID application and a lost/stolen ID affidavit is required along with a photo ID. A stolen ID may be replaced after furnishing the original copy of the police/campus security incident report.

## **SLS Resources and Labs**

The SLS-Linguistics Reading Room is located in Moore Hall 572. There is a large collection of books and journals related to linguistics, applied linguistics, language learning. Also, there are textbooks available for teaching various aspects of Second Language Studies. Past theses and Scholarly Papers as well as course materials have been kept in the Reading Room. However, the Reading Room is not a lending library. Materials do not circulate and may only be read during the hours the room is open.

Both SLS and Linguistics share responsibility for monitoring the facility. The Reading Room is staffed by student volunteer “monitors” from both departments and only open when there is a monitor present. The printer in the Reading Room is available for use at 5 cents per page. Paper is not provided. SLSSA members are allotted 200 pages per month as part of their membership fee. (Please refer to SLSSA membership section).

The Language Analysis and Experimentation (LAE) Laboratories are a research and teaching facility dedicated to human language and the cognitive mechanisms responsible for it. The LAE Labs house research on the articulation, acoustics, and perception of speech, the production and recognition of words, and the processing of sentences and discourse. Tools in these labs include audio and video recording hardware, acoustic analysis software, articulatory measurement devices, eye-tracking equipment, large language corpora, tools for building computational models of linguistic and cognitive behavior, and experiment design and analysis software.

If you only need occasional access to the labs, you should join the labs as a basic user. Most undergraduates will be basic users. Download the agreement form by clicking <http://www.ling.hawaii.edu/lae/documents/AgreementBasic110111.pdf> if you would like to be a basic user. You must pass the basic user quiz and turn in the completed agreement form to Moore 569. Allow at least a week for processing the form.

If you plan to use the labs frequently (e.g., working with participants in experiments, teaching a class in the labs, or checking out equipment), you should join the labs as an advanced user. Graduate students who

want to use the labs should be advanced users. Download the agreement form by clicking <http://www.ling.hawaii.edu/lae/documents/AgreementAdvanced110111.pdf> if you would like to be an advanced user. Take the quiz at the Phonetics or General Lab with a GA present. It will take 30 minutes, so please allow plenty of time to complete the quiz. Turn in the completed agreement form to Moore 569. Allow at least a week for processing the form.

## Writing Center

The Writing Center is open, free of charge, to anyone affiliated with the University of Hawai'i. Tutors at the Writing Center are trained to help at all stages of the writing process with all types of writing (e.g., essays, research papers, resumes, letters, creative work, etc.) Walk-ins are welcome, but scheduling an appointment is preferred to ensure a tutor will be available to work with you.

The Writing Center is open on weekdays from 10 am to 6 pm at Kuykendall Hall 415. Tutoring sessions cannot be scheduled after 5:30 pm, and holidays/breaks are observed. Please click <https://hawaii.mywconline.com/> to register and make an appointment. You may schedule up to two 30-minute appointments per week (walk-ins will count as one of the two allowed appointments). If you wish to cancel or reschedule your appointment, please do so online at least 24 hours prior to avoid having your Writing Center account disabled. Please see the website <http://www.english.hawaii.edu/writingcenter/> for more details.

## Library Guide

### **Hamilton Library**

(<http://library.manoa.hawaii.edu/>)

Hamilton Library houses the University of Hawaii's main library collections, including the Hawaiian and Pacific Collections on the 5th floor, Asia and East Asia on the 4th and 3rd floors, Business, Humanities and Social Sciences Collections on the 1st and 2nd floors of the main building. The Science and Technology collection is on the 1st to 4th floors of the Addition and the Archives collection is on the 5th floor of the Addition.

Hours: <http://library.manoa.hawaii.edu/about/hours.html#HAMILTON>

### **Computing**

There are many computers, printers, and scanners available for use. For more details, please see: (<http://library.manoa.hawaii.edu/about/computing/compute.html>)

Computer labs may be found in the following locations:

1st floor: near the Reference Desks in both the Main Building and the Addition

4th floor: next to the Express PCs, at far right of the Reference desk in the Main Building

5th floor: to the left of the Reference desk in the Main Building

Study rooms & presentation practice rooms

### **Study Rooms**

Group study rooms are available for use by University of Hawaii at Manoa students, faculty, and staff on a first-come, first-served basis. Presentation Practice Rooms are available for ***UHM students only***. The rooms are available whenever the building is open. Presentation practice rooms include a computer with Microsoft Office software, internet, and a projector.



*Note: Check out a study room key at the Circulation Desk in the main lobby with your valid UH ID card. Presentation practice rooms will be opened for you upon request.*

### **Circulation (borrowing)**

UH graduate students may borrow materials with a valid UH System student ID card. Your card must be registered with the Library in order to borrow materials. The loan period is 13 weeks unless otherwise specified.

Loans may be extended if items are not recalled or placed on hold by another user. Renewals may be made in person at the Circulation Desk or via your Account (<http://uhmanoa.lib.hawaii.edu:7008/vwebv/login>) function in Hawai'i Voyager (<http://uhmanoa.lib.hawaii.edu/>). Items may be renewed a maximum of 5 times unless otherwise restricted by another policy.

### **Research tools**

Find books & media:

<http://uhmanoa.lib.hawaii.edu:7008/vwebv/searchBasic?sk=manoa>

Electronic resources:

<http://micro189.lib3.hawaii.edu/ezproxy/formadvance.php>

Electronic journals and books:

<http://zu7lq2cc9q.search.serialssolutions.com/>

Browse by Subject:

<http://guides.library.manoa.hawaii.edu/index.php>

<http://guides.library.manoa.hawaii.edu/sls> (Second Language Studies)

### **FAQ - Frequently Asked Questions about Hamilton Library**

<http://library.manoa.hawaii.edu/about/faq.html>

### **Sinclair Library**

(<http://www.sinclair.hawaii.edu/>)

Sinclair Library houses the Wong Audiovisual Center, Music Collection, Reserve Books, Older Bound Periodicals and the Wong Computer Lab.

Hours: <http://library.manoa.hawaii.edu/about/hours.html#SINCLAIR>

### **Facilities**

The Wong Audiovisual Center (video & audio resources) located on the third floor of Sinclair Library serves University of Hawai'i at Manoa students, faculty and staff, other University of Hawai'i colleges, visiting scholars, and visitors from the community. The Center contains video & audio media including a large number of feature films in English and other languages. Items may be borrowed for a period of 7 days with proper UH identification. Items may also be renewed once online on the due date for an additional loan period of 7 days.

### **Computing**

There are many computers, printers, and scanners available for use. For more details, please see: (<http://library.manoa.hawaii.edu/about/computing/compute.html>)

Information Technology Services (ITS) maintains a computer lab on the first floor of Sinclair Library. The computers have Microsoft Office software and Internet access. There is also an ADA PC workstation equipped with headphones and ADA-compliant software for screen magnification (Zoomtext) and screen reading (JAWS).

### **Circulation (borrowing)**

Most audiovisual media may be borrowed by University of Hawaii system with a UH ID for 7 days.

There are limits on the number of media items (CD, DVD, Videotape, etc.) that a patron may check out at one time. The limit applies to any combination of media types. For example, a limit of 10 items means that you may check out 4 CDs, 4 DVDs, and 2 videotapes, or any similar combination totaling ten items.

These limits vary depending on patron or borrower type:

**Undergraduates** (Manoa campus) -- Limited to 10 media items

**Graduate students** (Manoa campus) -- Limited to 20 media items

**Faculty** (Manoa campus) – Unlimited

A tutorial for borrowing media is available online.

### **FAQ- frequently asked questions about Sinclair Library**

<http://guides.library.manoa.hawaii.edu/content.php?pid=187585&sid=1574743>

## On-campus dining

Meal Plans are available, but unless required by your housing building, we recommend that you do not apply for a meal plan. Cash and credit cards are accepted at almost all restaurants and dining areas. On-campus dining is a bit expensive, and packing a home lunch might be a good option for some.

Simply Ono has two food trucks on campus (Krauss Hall and Biomedical Science Building) and serves off a different menu everyday. For daily menu, please visit:

[http://www.simplyono.com/Today\\_s\\_Menu.html](http://www.simplyono.com/Today_s_Menu.html) There are a lot of local options here!

Michi's Cooking Fresh For You is the black food truck located on East-West Road near Kennedy Theatre with a ton of plate lunch options. Good prices and healthy choices available! We recommend the pan seared pesto steak 😊

Le Crepe Café is located near the law school on upper campus. The Café makes traditional French crepes made to order. They specialize in sweet and savory crepes and use fresh ingredients. Coffee and espresso drinks are also sold here.

Sweet Revenge is only on campus on Mondays near Holmes Hall. The baker has a bunch of homemade sweet and savory pie slices for sale.

The Blue Truck Teppanyaki can be found on University Avenue near the bus stops. They make plate lunches with grilled meat (beef, chicken, etc) with lots of flavor and vegetables.

The Bean Counter serves up brewed coffee and espresso from local beans. Bagels, wraps, salads, and treats are also available for sale. The Bean Counter is located in the Business Administration Building.

Verde Kaimuki is located on the first floor of Saunders Hall. It's a bit further away from Moore Hall, but they have delicious made-to-order burritos. Breakfast, lunch, and vegetarian options are available. Outside seating is available as well.

Jamba Juice is in Campus Center. They serve frozen fruit smoothies and snacks.

Starbucks is next to Jamba Juice in Campus Center. This Starbucks has the full Starbucks food and beverage menu and accepts the gift cards as well as cash and credit.

Subway is near the UH Bookstore, on the same floor on Campus Center as Jamba Juice and Starbucks. This Subway has all the delicious sandwiches and salads as well as dessert (cookies) and breakfast items.

Ba-Le Sandwich Shop can be found inside Hemenway Hall. Pho, made-to-order sandwiches on fresh baked breads, variety of salads, tapioca and pasteries, and iced coffee are available. There is also an alcoholic bar, but is not open until after 12 noon.

**Paradise Palms** is located next to Moore Hall where a lot of the SLS classes will be. There are a lot of food and drink options as well as plentiful seating. Inside Paradise Palms, is the following:

Panda Express is a chain restaurant that serves Chinese food. Most of the entrée choices are available at this Express location. Panda Bowls, or two and three item plates are available.

The Curb has great coffee, fresh pastries, vegetarian sandwiches, teas, and other beverages (like hot chocolate). Be sure to ask for their point card, or use Perka to earn a free drink here!

L&L Hawaiian Barbeque is another chain establishment that serves local and Asian-American fusion cuisine at reasonable prices. We recommend the chicken katsu!

Domino's Pizza Express serves their well-known, tasty pizzas at a quick and convenient counter in the Paradise Palms food court. Be on the lookout for any coupons they distribute or have out.

India Café offers signature exotic South Indian and Malaysian cuisine. Daily specials include chicken curry, lamb masala, garlic shrimp, seafood curry, spinach tofu, spicy eggplant, and more. There are over 10 different vegetarian entrees to choose from. Spiciness ranges from mild to very hot.

Super Gyros is right next to India Café and serves Greek-style meat or vegetarian pita sandwiches, salads, smoothies that are quick, fresh, and healthy.

Honolulu Gourmet Foods features healthy, locally grown salads, sandwiches, poke bowls, and grab-and-go items at affordable prices. Frozen yogurt is also available here. We recommend the Dole Whip! ☺

**Sustainability Courtyard** is near Kuykendall and Sakamaki Halls and has a couple vegetarian options, such as:

Govinda's features a 100% pure vegetarian menu with items low in cholesterol and mostly organic. They strive to bring you a healthy and delicious meal at the best possible price. The menu never contains meat or meat by-products, fish, eggs, MSG, iodized salt, preservatives, hydrogenated oils, or artificial colors or flavors. Free drink for first-time customers!

Da Spot serves an all vegetarian menu of fresh health foods from around the globe, including Hawaiian, Egyptian, Mediterranean, European, & Asian gourmet foods. Over 15 combinations of different fruit smoothies are offered.

**Campus Center Food Court** has a number of food options.

Da Grill: burgers, loco moco, grilled cheese and chicken sandwiches, Salmon Burgers, and Housemade Veggie Burgers

Salad Station: various salads available, local produce

Global Fusion: rotation of global favorites such as Thai and Italian

Bakes: assorted varieties available including a vegetarian option.

Aja Sushi & Bentos: full bentos or side portions ready to go

Plate Lunch: plate lunches are available with hefty portions of mac salad, mahimahi, chicken katsu, hamburger steak, and more. Side green salad may be substituted instead of mac salad.

Simply To Go: Sandwiches, snacks, salads can be found in the Simply to Go cooler.

If you go down the stairs and keep walking towards the ATM machines, you can find [Pizza Hut](#) and [Taco Bell](#), too. For more details and locations, please visit <http://manoa.hawaii.edu/food/> and <http://www.uhmdining.com/ccd.htm> or use Yelp to search for unbiased reviews!

## **Computers on Campus**

### **Moore Hall Labs**

Moore 153B is the Mac Lab. Moore 153A is the PC Lab. These labs are maintained by the College of Languages, Linguistics, and Literature (LLL). The computers can be used by students in the College of LLL (SLS is a part of this college) if there are no classes scheduled. The schedule is usually posted on the door to the lab so you can see when the lab will be being used by students. Printing can be done for \$0.05 per page, cash only.

Hours: 8:00 am to 4:30 pm Mon-Fri.

For more information visit <http://llc.manoa.hawaii.edu/facFacilityTour.php>

### **Hamilton Library**

The CLIC (Computerized Learning and Information Center) Lab is on the ground floor of Hamilton library when you walk in the front entrance. There are many PC computers available but during peak hours this lab can be full. Additional CLIC Computers are available in the Science and Technology Wing (Hamilton Addition) which is towards the back of the library on the ground floor through the hallway. These computers are available for all UH students to use. You will need your UH Username and password to login. Printing can be done using the print station. Printing is \$0.11 per page and you will need a print card to print. Print cards can be purchased for \$1.00 using the automated card dispenser or from the Business Center.

Hours: open when library is open however monitors not always on duty.

For library hours visit <http://library.manoa.hawaii.edu/about/hours.html>

*Note: Hamilton Library is very cold so bring a jacket or sweater.*

### **Sinclair Library**

The Wong Computer Lab is located on the ground floor to the right when you enter the library. There are 38 PCs and 2 Macs available. During peak hours this lab can get full. These computers are available for all UH students to use. You will need your UH Username and password to login. Printing can be done using a print card at the printing station for \$ 0.11 per page.

Hours: Open when library is open however monitors not always on duty.

For library hours visit <http://library.manoa.hawaii.edu/about/hours.html>

For more information about The Wong Computer Lab visit <http://www.hawaii.edu/itslab/clic.htm>

*Note: This library is very cold so bring a jacket or sweater.*

### **Campus Center**

The Campus Center Computer Lab and Lounge is located in Campus Center Room 316. There are 7 PCs and 6 Mac computers available for UH Students. You will need to sign in and show your UH ID when entering the lab. This lab can get pretty busy during peak times in the semester. Printing is free if using your own paper (limit 15 pages per day) and \$ 0.07 per page if using lab paper.

Hours: 7:00 am – 7:00 pm Mon-Fri.

For more information visit <http://www.hawaii.edu/campuscenter/services/clab.html>

## Study Areas

### On Campus

There are many places to study on campus. I'll introduce five popular study areas. (see next page)

	Monday- Friday	Saturday	Sunday
Sinclair Library	Remains open 24 hrs until Friday, closing at 6pm	12pm-6pm	12pm-midnight
Hamilton Library	8am-10pm Friday close 6pm	9am-5pm (on non-holidays)	12pm-10pm
Paradise Palms	7am-6pm	closed	closed
Campus Center	9am-5pm	closed	closed
Campus Center Computer Lab	7am-7pm	closed	closed

*Note: Hours are subject to change. Please check websites for updated hours.*

#### 1. The Reading Room

I love the reading room because it's quiet (usually), it's a cheap place to print, and you can meet other students from the SLS and Linguistics departments there. Of course, you also have access to a large number of SLS journals and books, some of which are not even available in the Hamilton Library. The only disadvantage to the Reading Room is that it is only open when the volunteer monitors are scheduled to be there. You can check the schedule on the door.

#### 2. Sinclair Library

The Sinclair Library has a huge number of places to study—you simply have to choose the best place for yourself. On the first floor, there are individual as well as group study areas. On the second floor, you can get a beautiful view of Diamond Head while studying on the lanai. On the third floor, there is air conditioning and you have access to books, sheet music, and DVDs. Except for the third floor, you can bring food or drinks with you.

#### 3. Hamilton Library

The first thing people think when they enter Hamilton Library is usually, "It's cold in here!" Right now they are renovating the air conditioning system, but it's likely that the place will remain cold since they need to protect a massive collection of books.

There are less obvious spots to study in Hamilton than Sinclair Library, but if you look you will find them. If you head towards the back past the computer lab, you'll find the Addition, which contains more hard sciences-related material and study areas. The upper floors of Hamilton also have many desks spread throughout the aisles and along the walls for studying. One perk of Hamilton Library are the group study rooms and presentation practice rooms. You have to ask the check-out desk for access to these rooms, but it's easy to sign up as long as they are available.

#### 4. Paradise Palms

Paradise Palms is not the best place to study during lunch hours (11am-2pm) since it can get quite noisy and crowded, but at other times it can be a great place to drink coffee and read a book.

#### 5. Campus Center

Just like Paradise Palms, Campus Center is also busy during lunch hours, but during other times it can serve as a decent study area. If you want to get away from the noise, I suggest going to the

computer lab on the 2<sup>nd</sup> floor, where there are tables, couches, and computers available for studying. In addition, you may find some areas to study inside the large dining hall across from Jamba Juice.

### Off Campus

On weekend mornings, when Sinclair Library isn't open or for a change in scenery, you might want to try studying off campus. Below is a list of different coffee shops, smoothie shops, and coffee/restaurants where you might enjoy some quality study time. However, this is not an all-inclusive list, so you might find some better places on your own as well!

<u>Place</u>	<u>Location</u>	<u>Internet</u>	<u>Outlets</u>	<u>Bathroom</u>	<u>Notes</u>
<b>Coffee/tea shops</b>					
Glazers Coffee		Yes	Yes	Yes	can be crowded
Tea Farm		Yes	Some	Yes	very bright atmosphere
<hr/>					
<b>Starbucks</b>					
• Safeway	1234 S. Beretania St.	Yes	Few	in Safeway	don't have to purchase coffee if you sit outside
• Manoa Marketplace	2902 East Manoa Rd	Yes	Some	Yes	crowded
• Waikiki	2255 Kuhio Avenue	Yes	Few	No	can be crowded
• Ward Center	949 Auahi St.	Yes	Yes	Yes	spacious, cold
• Ala Moana	next to Sears, 1 <sup>st</sup> fl	Yes	No	in Sears	really small
• Ala Moana	next to Macy's, 2 <sup>nd</sup> fl	Yes	Not sure	In Mall	usually crowded
• Downtown	130 Merchant St.	Yes	Few	Not sure	closes at 3pm on Weekends
• Walmart		Yes	Yes	In Walmart	small
<hr/>					
<b>Coffee Bean &amp; Tea Leaf</b>					
Manoa Marketplace	2754 Woodlawn Dr.	Yes	Some	Yes?	often crowded
<hr/>					
<b>Bubble Drink/Smoothie Places</b>					
Bambu	Keeamoku St. (across from Walmart)	Yes	Yes	2 <sup>nd</sup> Floor	cozy, great smoothies
Coffee or Tea?	McCully Shopping Center	Yes	No	2 <sup>nd</sup> Floor	good bubble tea
Jamba Juice					
Ward Center	940 Auahi Street	Yes	Yes	Yes	
<hr/>					

<u>Place</u>	<u>Location</u>	<u>Internet</u>	<u>Outlets</u>	<u>Bathroom</u>	<u>Notes</u>
<b>Serves Coffee and Breakfast/Lunch</b>					
Coffee Line	1820 University Ave in the YMCA	Yes	No	Yes	open 8-2 M-F and 8-12 on weekends
Paina Café	1200 Ala Moana Blvd.	Yes	Some	outside	great poke, spacious
Sears Café	Ala Moana Mall in Sears, 1 <sup>st</sup> floor	No	No	in Sears	cheap coffee
Sure Shot	1249 Wilder Avenue	Yes	Yes	No	serves food too
Kissaten	88 Piikoi Street near Ala Moana	Yes	Some	Yes	can only use internet for 1 hr a visit
Mocha Java Café	1200 Ala Moana Blvd. (in Ward Mall)	Yes (w/pass wd)	No	in Mall	serves food too
Coffee Talk	3601 Waialae Ave.	Yes	Some	Yes	spacious
<hr/>					
<b>Nijiya</b>					
• Ala Moana	451 Piikoi St.	No	?	Yes	large table area in front of bus stop
• Puck's Alley	1009 University Ave.	No	No	?	



## **Funding Opportunities**

Student funding is available from a range of sources, depending on ones' goals and purposes. Please note that this is no substitute for a more comprehensive information search, so our first bit of advice is to read the most current information about each opportunity thoroughly before you apply. Good luck!

### **Graduate Assistantship Positions in SLS**

Doctoral students may be placed in a GAship upon acceptance of admission, but they need to reapply each semester. Master's students can apply during the application period. The selection committee sends out application information through the SLS mailing list.

If you are applying for a grad assistantship, it is a good idea to contact the respective coordinator in advance. Try to find out from him or her about the availability of positions, the selection process, and who you might talk to in order to get the inside scoop on the job. You can focus your application by touching base with those you'd like to work for early in the process.

Talk with your advisor about your plans. You might feel that a GAship is particularly important to you because it is linked to research or training that you need. If so, talk with your advisor about your specific goals and plans. He or she will be able to give advice about the process and will point you in the right direction.

Lastly, consider that GAships aren't just jobs. They are opportunities to receive training in a supportive environment. Do you plan to be an ESL teacher? A materials writer? A university instructor? GAship opportunities, when linked to your long-term goals, are a great way to become the professional you've always wanted to be.

Please note that GAships for teaching positions in the English Language Institute (ELI) and Hawai'i English Language Program (HELP) are extremely competitive and the amount of GAships available each semester ranges. There is no guarantee that MA students will receive a GAship.

For more information: [http://www.hawaii.edu/sls/sls/?page\\_id=1278](http://www.hawaii.edu/sls/sls/?page_id=1278)

For incoming PhD students with GAships, <http://www.hawaii.edu/ohr/docs/forms/chklist1.pdf> may be helpful in completing the necessary paperwork.

### **SLS Department Funds and Awards**

For general information please visit [http://www.hawaii.edu/sls/sls/?page\\_id=1281](http://www.hawaii.edu/sls/sls/?page_id=1281)

#### **Ruth Crymes Fund**

The Ruth Crymes Scholarship Fund provides funds to enable students in the Department of Second Language Studies to present papers at national or international professional meetings, as well as local conferences and meetings such as HCTE and HALT. This fund reimburses conference travel/fees *only after you have applied to other sources.*

For more information: [http://www.hawaii.edu/sls/sls/?page\\_id=1981](http://www.hawaii.edu/sls/sls/?page_id=1981)

#### **Charlene J. Sato Fund**

This fund provides financial support for students of the University of Hawai'i pursuing academic work involving or related to Hawai'i Creole English ("Pidgin").

For more information: <http://blog.hawaii.edu/satocenter/sato-fund-2/>

### **‘Oihana Maika‘i Fund for Professional Development**

The Second Language Studies Graduate 'Oihana Maika'i [Endeavor of Excellence] Fund for Professional Development provides funding to graduate students who are carrying out pedagogically-oriented academic work. Preference is given to research and materials development in the following three areas:

- writing
- reading
- curriculum development and evaluation

Please download the form at [http://www.hawaii.edu/sls/sls/?page\\_id=154](http://www.hawaii.edu/sls/sls/?page_id=154) for more information

### **Elizabeth Holmes-Carr Fund**

The Elizabeth Carr Holmes Scholarship Fund provides funds to enable full-time BA, MA, AGC, and PhD students in the Department of Second Language Studies to carry out degree-related research.

Please download the form at [http://www.hawaii.edu/sls/sls/?page\\_id=154](http://www.hawaii.edu/sls/sls/?page_id=154) for more information

### **University Awards**

For a general listing of different scholarships offered check out the scholarships website through Financial Aid Services. <http://www.hawaii.edu/fas/info/scholarships.php>

### **Graduate Student Organization Grants and Awards**

Graduate Student Organization (GSO) Grants and Awards support: professional development (i.e. research expenses) and conference travel and fees. The most important advice here is to talk with the department representatives. In SLS, we have two GSO reps, who are elected on a yearly basis.

For more information: <http://gso.hawaii.edu/gso2/index.html>

### **Bilinski Fellowships**

This is a recently established funding opportunity, which is limited to doctoral students who are U.S. citizens involved in no outside work at the time of the award. There are three awards, each of which is tailored to a different purpose: The Bilinski Pre-Dissertation Research Award, The Bilinski Pre-Dissertation Fellowship, The Bilinski Dissertation Research Fellowship. In each case, the grantee is expected to work on a specific stage toward the completion of his or her dissertation. The Bilinski Fellowship is very generous and the award offers a special opportunity focus solely on ones' dissertation. For more information, consult the Graduate Chair. If you apply, it also may help to talk to past recipients in SLS. Note, too, that these awards are paid out once a semester.

For more information: <http://manoa.hawaii.edu/news/article.php?aId=4547>

### **Other Funding**

There are funds outside of the department and university which relate to second language research. Some conferences offer student travel awards (e.g., the [American Association of Applied Linguistics conference](#) and the [Second Language Research Forum](#)). Past SLS doctoral students have also received awards in support of their research from the [Educational Testing Service](#), [Language Learning](#), and [The International Research Foundation for English Language Education](#). Finally, the [National Science Foundation](#) and the [Spencer Foundation](#), among others, also fund dissertation projects related to SLS.

## **Outside Teaching Work**

There are many opportunities for paid teaching around Honolulu. These may be announced from time to time on the SLS job list, or through word of mouth. It is a good idea to make sure you get on the SLS job list. Please email Priscilla Faucette at [faucette@hawaii.edu](mailto:faucette@hawaii.edu) to request to be added to the list. Below are a few of the language schools in Honolulu. They will hire from time to time but you can always stop by and bring them your resume.

### **Center for Asia-Pacific Exchange (CAPE)**

This is a convenient opportunity because classes are taught on campus. On the other hand, their schedule differs from the UH calendar, so it requires some coordination. The CAPE president, Dr. Yoo, is very organized and efficient and the program offers a wide range of opportunities, including short-term (contracted) positions in ESL. Teacher trainers are also sought occasionally.

For more information: <http://www.cape.edu/>

### **New Intensive Courses in English (NICE)**

Occasionally NICE will hire teachers for a variety of their programs. Some are for short term courses, while other for longer courses. These are contract positions. All courses are taught on campus. NICE is run through the Outreach College of UH Mānoa.

For more information: <http://www.nice.hawaii.edu/>

### **Education First (EF)**

EF is a private English language school in Honolulu. Occasionally they hire teachers.

For more information: <http://www.ef.com/aya/destinations/united-states/honolulu/>

### **Global Village**

Global Village is another private language school in Honolulu that will occasionally need to hire teachers.

For more information: <http://gvhawaiienglish.com/>

## Volunteering

There are numerous opportunities to volunteer in our field around Hawai'i. There are opportunities to work with all age groups as either a classroom aide or as a one-on-one tutor. This list will help get you started, but does not detail every opportunity on offer here. These are some of the programs students in SLS have participated in previously.

### **Teaching/Tutoring**

#### **Students Helping in the Naturalization of Elders (SHINE)**

Student volunteers work once a week for two hours with elderly immigrants to the United States, mostly from China. Tutoring focuses on English language, but also on knowledge needed to pass the US naturalization test that the tutees will take to become US citizens. Training sessions are required and provided once per semester. More information on how to volunteer may be found at:

<http://www2.hawaii.edu/~csssl/pages/shine.html>

#### **Institute of Human Services (HIS Shelter)**

Volunteers at this shelter work with individuals or families who are homeless or at risk of becoming homeless. There are opportunities to teach ESL classes to recent immigrants and refugees who need survival English skills. There are also opportunities to tutor children. Training orientations are required and offered regularly. More information can be found at: <http://www.ihshawaii.org/volunteer/overview/>

#### **English Language Learner (ELL) Programs at Public Schools**

Most public schools in Hawai'i have a program for ELLs. Most of these programs are always welcoming volunteers to help out as classroom aides. One such school near UH is Lunalilo Elementary School.

Volunteers there are welcome to come and work with any classes from kindergarten to 5<sup>th</sup> grade either in the class as an aide or as a one-on-one tutor with certain students. For more information on volunteering at Lunalilo, please contact the ELL coordinator there Lorraine Ching at:

[Lorraine\\_Ching/LUNALILO/HIDOE@notes.k12.hi.us](mailto:Lorraine_Ching/LUNALILO/HIDOE@notes.k12.hi.us) Please also feel free to reach out to your own neighborhood school to get information on volunteering with their ELL program.

#### **Hawaii Literacy**

Hawaii Literacy is a local non-profit which offers free English language programs for members of the Honolulu community. The Adult Literacy Program offers one-to-one reading assistance between adult students and volunteer-teachers. The Family Library is an after-school program that runs twice a week at both Mayor Wright Homes (MWH) and Kuhio Park Terrace (KPT), two low-income housing projects. The ELL (English Language Learner) Program also offers two different services. First, English language classes are offered twice a week at both MWH and KPT. These classes are reserved for residents of these communities. The ELL program also runs a Drop-in-Center located in the Kaumakapili Church, near Chinatown. The Drop-in-Center offers free English language classes to ANYONE within the community. Classes run Monday, Wednesday, Friday and Saturday mornings. Classes are mixed-level with attendance typically ranging from 15 to 25 students. The students come from a diverse range of backgrounds with the majority being Korean, Chinese, and Micronesian. It is a casual classroom setting and the students are enthusiastic and appreciative.

Volunteers are welcome and encouraged to participate in any and all of the programs described above. If you have a research project in mind, want a platform to implement new lesson plans or simply want to help some special members of our community please contact Sam, a current SLS MA student.

Samuel H. Skeist  
Hawaii Literacy  
ELL Program Coordinator  
Cell: (808) 352-7797  
Email: samuel.skeist@hawaiiliteracy.org

## **Academic Activities**

### **Second Language Studies Student Association**

One of the best ways to be involved in the department and academic community at UH is to join the Second Language Studies Student Association (SLSSA). Visit the website: <http://blog.hawaii.edu/slssa/> and join the facebook group: <https://www.facebook.com/groups/119838615404/> There are a number of opportunities to help out and become involved in your particular area of interest. Please watch your email for opportunities, attend the coolers, and talk to board members if you are interested!

### **Copy editor for *Language Learning & Technology***

*Language Learning & Technology* (LLT, <http://www.llt.msu.edu/index.html>) is one of three electronic journals sponsored by the National Foreign Language Resource Center (NFLRC). The LLT is published three times a year, and it disseminates research to foreign and second language educators worldwide on issues related to technology and language education; as such, the journal has close ties to the Department of Second Language Studies at the University of Hawai'i. It is a top-ranked journal both in the field of Education and Linguistics: for the year 2011, LLT's 5-year impact factor (i.e., how often each of the journal's articles are cited over five years) ranked the journal 15th of 205 journals in the field of Education, and 7th of 162 journals in the field of linguistics (<http://llt.msu.edu/impact/index.html>). The Managing Editor at LLT continually seeks volunteers to work in the capacity of manuscript copy-editors. As copy editor, you will proof read a manuscript that has been accepted for publication, providing the author suggestions for an improved, final manuscript. Of most importance, copy editors make recommendations about word choice, flow, and APA stylistics. In exchange for copy-editing, you will be listed as a copy-editor both on the website masthead for one year, in addition to being listed with the issue for which you copy-edited. More importantly, you will have the chance to work inside a leading journal, getting a behind-the-scenes feel of what it is like to publish scientific articles.

If you are interested in this, please contact [llt@hawaii.edu](mailto:llt@hawaii.edu).

### **Copy editor at *Reading in a Foreign Language***

*Reading in a Foreign Language* (RFL, <http://nflrc.hawaii.edu/rfl/>) is another scholarly, electronic journal at the University of Hawai'i, Manoa, sponsored by the NFLRC. RFL was founded in 1983 as a print journal, and moved to UH in 2002 in its current form. It is published twice a year in October and April, and is directed at foreign and second language educators around the world on issues related to second language reading. It is headed by two of our SLS faculty, Dr. Richard Day and Dr. Thom Hudson. The managing editor of RFL is continually seeking volunteer copy editors, similar to LLT. By volunteering your time as copyeditor, not only will you gain insight into the works of an international academic journal (e.g., details of following APA format), but your name will also be published in each issue that you participate in, which will provide another solid line for your CV!

If you are interested in this, please contact [readfl@hawaii.edu](mailto:readfl@hawaii.edu).

## **Reading Room Monitor**

The SLS and Linguistics department have a reading room on the 5<sup>th</sup> floor of Moore Hall. The reading room is only open with the support of student volunteer monitors. If you are interested in this, please contact Dr. Crookes. Also watch your email for notices about orientation for monitors.

## **Conferences**

Conferences are another great volunteer opportunity for students to get a chance to be involved in the academic community. The College of Languages, Linguists, and Literature (LLL) of which SLS is a part, hosts an annual Graduate Student Conference in the spring. Watch your email for opportunities to co-chair or volunteer for this conference or contact the office of LLL for more information:

<http://www.lll.hawaii.edu/>

[The University of Hawai'i hosts conferences from time to time and are always looking for volunteers.](#)

[Calls for volunteers will come via UH email.](#)

## **Professional Organizations**

If you are interested in becoming a language teacher, there are two main professional organizations in Hawaii that it may be possible to work with as a board member. Just because you are a grad student, don't feel intimidated by joining and becoming involved with one of these professional organizations. It is one more way to build valuable experience. More information can be found at:

**Hawaii Teachers of English to Speakers of Other Languages (HITESOL):**

<http://hawaiitesol.wildapricot.org/>

**Hawaii Association of Language Teachers (HALT):** <http://halthome.org/>

## **Further Opportunities**

Many other volunteer opportunities can be found via this wonderful searchable database put together by the United Way: <http://search.volunteerhawaii.org/volunteer/>



*Thank you for reading, and we hope to see you soon!*



UNIVERSITY  
*of* HAWAII®  

---

MĀNOA

University of Hawai'i at Mānoa  
Department of Second Language Studies  
1890 East-West Road  
Honolulu, HI 96822  
<http://www.hawaii.edu/sls/>