

Position Organization Chart

Chart III a

General Education Division/Department	
<u>General Education</u>	
Social Science	
Chairperson, # _____ *	
<u>Instructors</u>	Total (9.00)
Full-time: #83745, #84972, #84973, #83642, #82152, #82706, #82935, #83492, #83560	
Language Arts	
Chairperson, # _____ *	
<u>Instructors</u>	Total (14.00)
Full-time: #83559, #82178, #83783, #83903, #82232, #82555, #82776, #83308, #83447, #83870, #84327, #84409, #83795, #83123	
Paralegal Program	
Chairperson, # _____ *	
<u>Instructors</u>	Total (1.00)
Full-time: #83360	
General Education, Clerical Staff**	
Secretary II, SR 12, #22313	
Clerk-Typist II, SR 08, #26658, #22310	
Clerk-Steno II, SR 09, #26763	

CHART UPDATED
JUL 1985

*Chairperson is appointed from among instructional positions within department.

**Secretarial and Clerical staff serves all four General Education Departments--Social Science, Language Arts, Mathematics/Sciences, and Humanities.

Position Organization Chart

Chart III b

Business Education Division/Department

Business Education

Accounting/Data Processing

Chairperson, # _____ *

Instructors Total (10.00)

Full-time: #82026, #82066, #82728, #82931, #82795,
#83221, #84337, #82503, #84882, #83901

Business Administration

Chairperson, # _____ *

Instructors Total (7.00)

Full-time: #82031, #82218, #82231, #82429, #82389,
#84150, #84369

Secretarial Science

Chairperson, # _____ *

Instructors Total (9.00)

Full-time: #82348, #82380, #82876, #83071, #83734,
#83771, #84072, #84223, #84370

Business Education, Clerical Staff

Secretary II, SR 12, #22312

Clerk-Typist II, SR 08, #18092

CHART UPDATED

JUL 1985

*Chairperson is appointed from among instructional positions within department.

Position Organization Chart

Chart III c

Food Service and Hospitality Education Division/Department

Food Service and Hospitality Education

Chairperson, # _____ *

Instructors Total (12.00)

Full-time: #82540, #82970, #83225, #83460, #83684,
#84091, #84103, #84304, #84539, #82683,
#82467, #83133

Food Service, Clerical Staff

Secretary II, SR 12, #16962

Cook III, WB 08, #22318 (w)

Snack Bar Cashier, SR 06, #22319 (w)

Clerk-Typist II, SR 08, #29010 (w)

Cafeteria Helper, WB 02, #32863 (w)

JUL 1985

*Chairperson is appointed from among instructional positions within department.

(w) Represents positions funded by the Food Service Revolving Fund.

Position Organization Chart

Chart III d

General Education Division/Department

General Education

Mathematics/Sciences

Chairperson, # _____ *

Instructors Total (11.00)

Full-time: #82492, #82981, #83974, #84458, #82394,
#83096, #83262, #83688, #83733, #83357,
#83939

Humanities

Chairperson, # _____ *

Instructors Total (10.00)

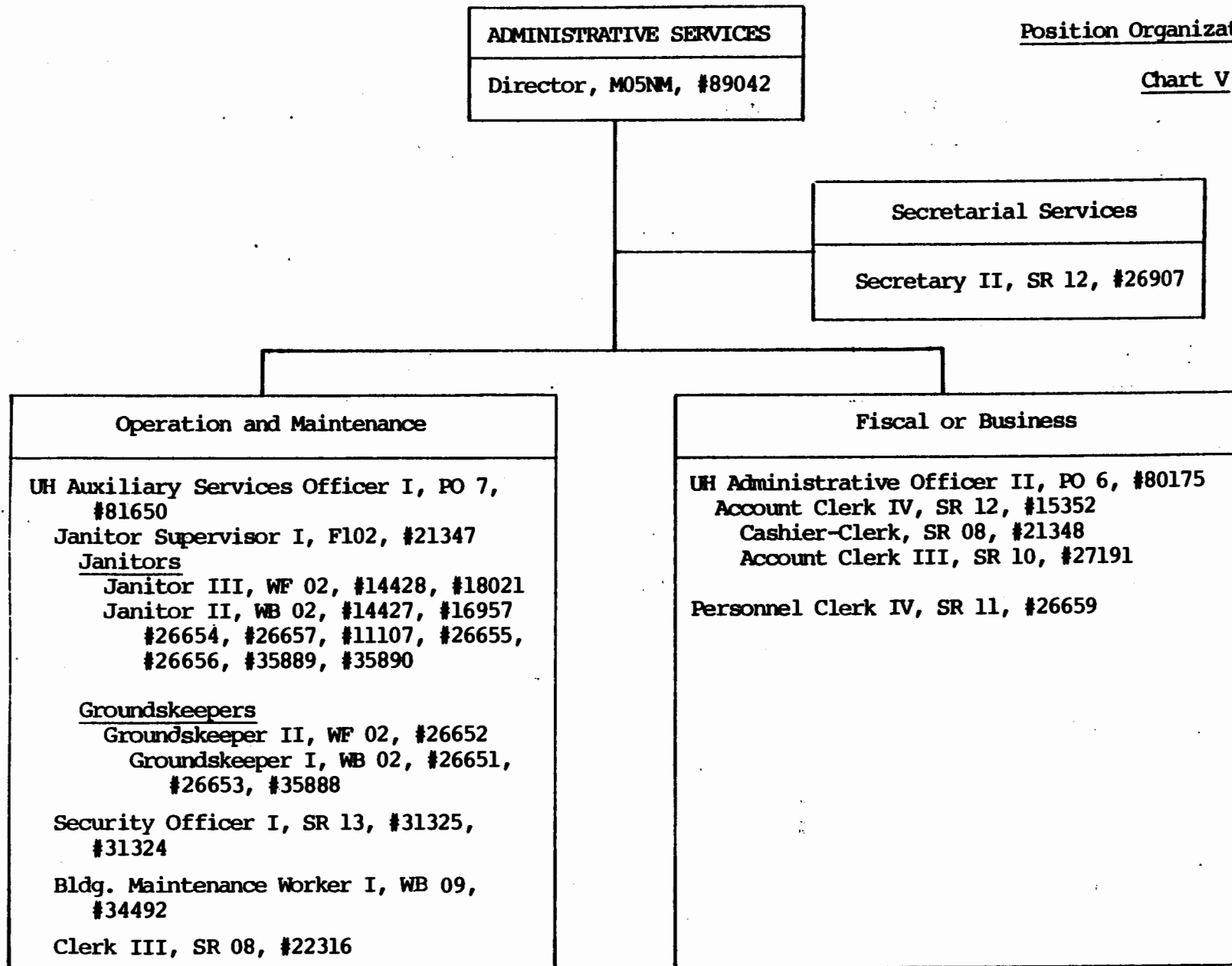
Full-time: #84971, #83094, #82631, #82925, #83809,
#84974, #82607, #84470, #82052, #82983

JUL 1985

*Chairperson is appointed from among instructional positions within department.

Position Organization Chart

Chart V



JUL 1985