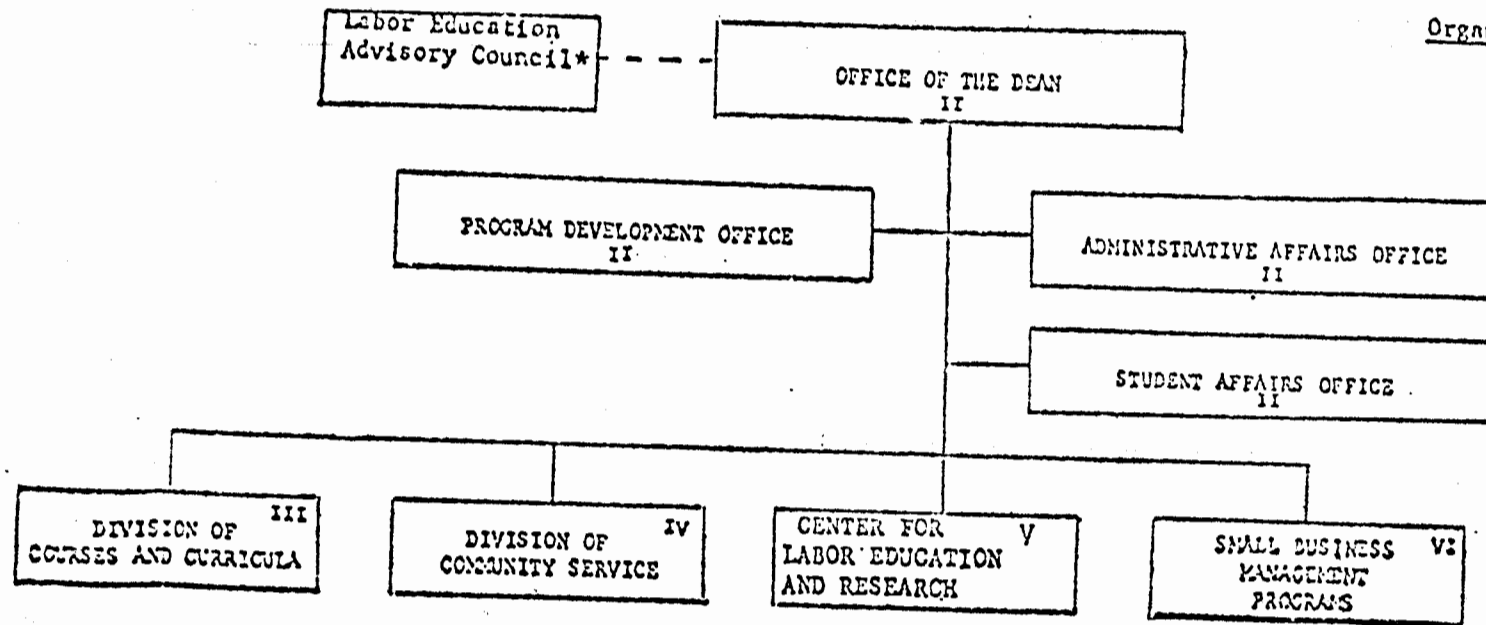


STATE OF HAWAII
UNIVERSITY OF HAWAII
UNIVERSITY OF HAWAII AT MANA
COLLEGE OF CONTINUING EDUCATION
AND COMMUNITY SERVICE

Organization Chart

Chart I



* Act 202, SLH 1976, Advisory body to the Dean
Advisory body to the Dean for the Center of Labor Education and Research

UNIVERSITY OF HAWAII, MANOA
COLLEGE OF CONTINUING EDUCATION
AND COMMUNITY SERVICE

Office of the Dean and Staff Offices
Position Organization Chart

Chart II

OFFICE OF THE DEAN	
Dean #89128	M-11

Secretary III #10867	SR-14
-------------------------	-------

Associate Dean #89074	M-6
--------------------------	-----

STUDENT AFFAIRS OFFICE	
Director #89065	M-3

Secretary II #24871	SR-12
------------------------	-------

Secretary II, #00491	SR-12
Clerk-Typist III #10868	SR-10
Clerk-Stenographer III, #17425	SR-11

UH Administrative Officer III #80142	P-09
---	------

Account Clerk IV #14209, #11485	SR-12
Purchasing Clerk I #21626	SR-10

Associate Specialist #83721	S-4
Clerk-Typist II*, #3659	SR-8

PROGRAM DEVELOPMENT	
Specialist #84637	S-5 (8)

* To be redescribed.

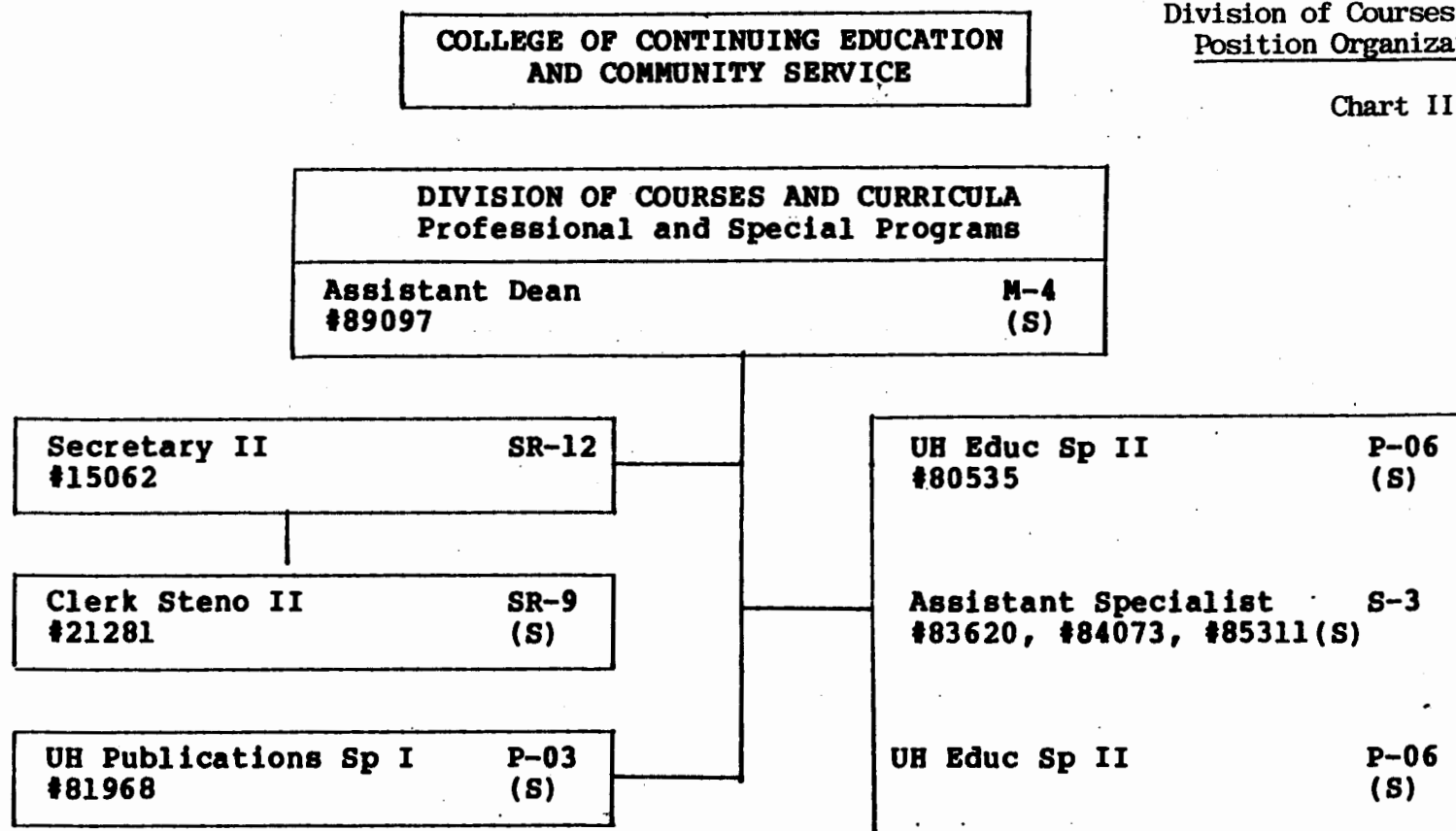
APPROVED:

Albert J. Jensen
President, University of Hawaii

Date: OCT 29 1965

Division of Courses and Curricula
Position Organization Chart

Chart III

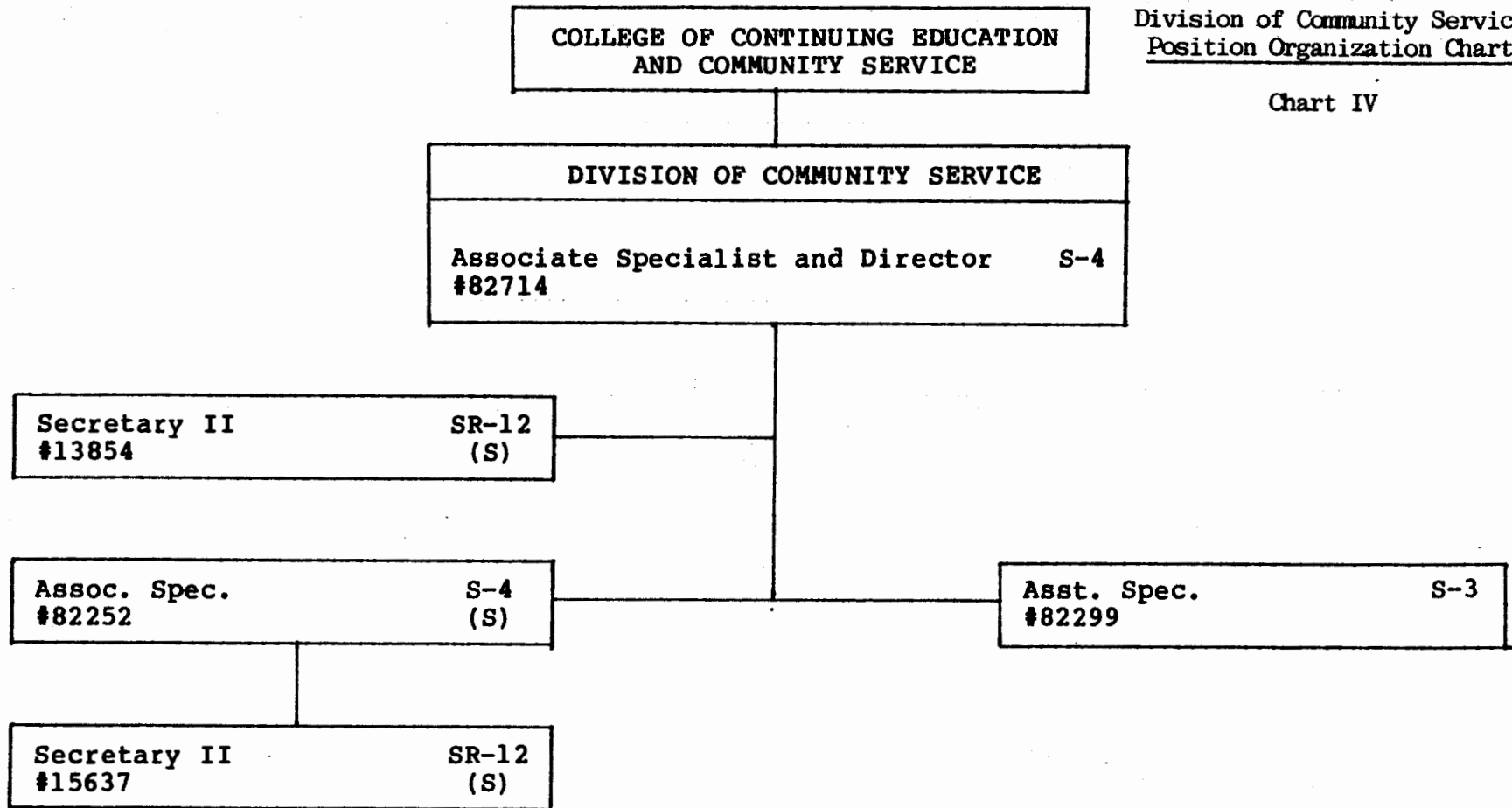


JUL 1985

State of Hawaii
University of Hawaii at Manoa
College of Continuing Education
and Community Service

Division of Community Service
Position Organization Chart

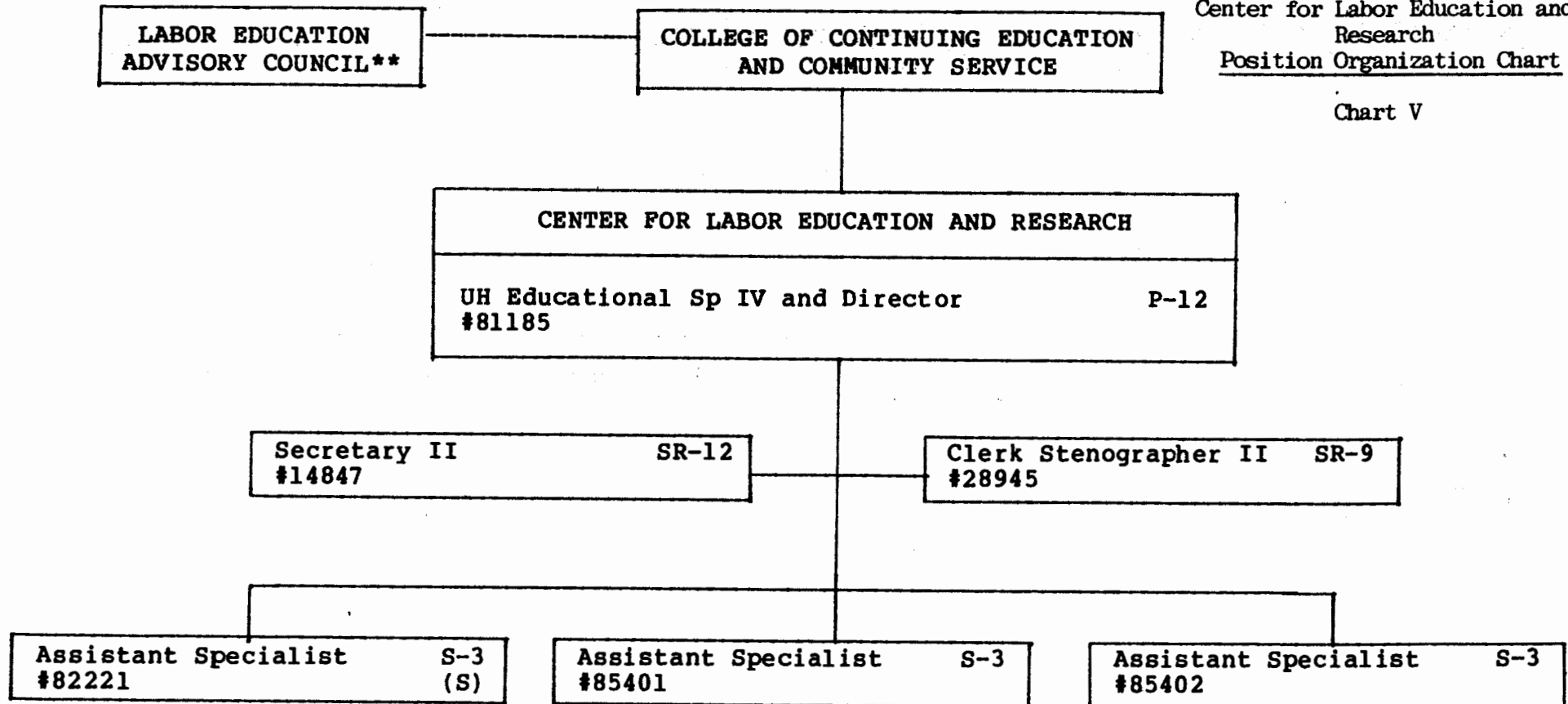
Chart IV



JUL 1984

State of Hawaii
 University of Hawaii at Manoa
 College of Continuing Education and
 and Community Service
 Center for Labor Education and
 Research
Position Organization Chart

Chart V



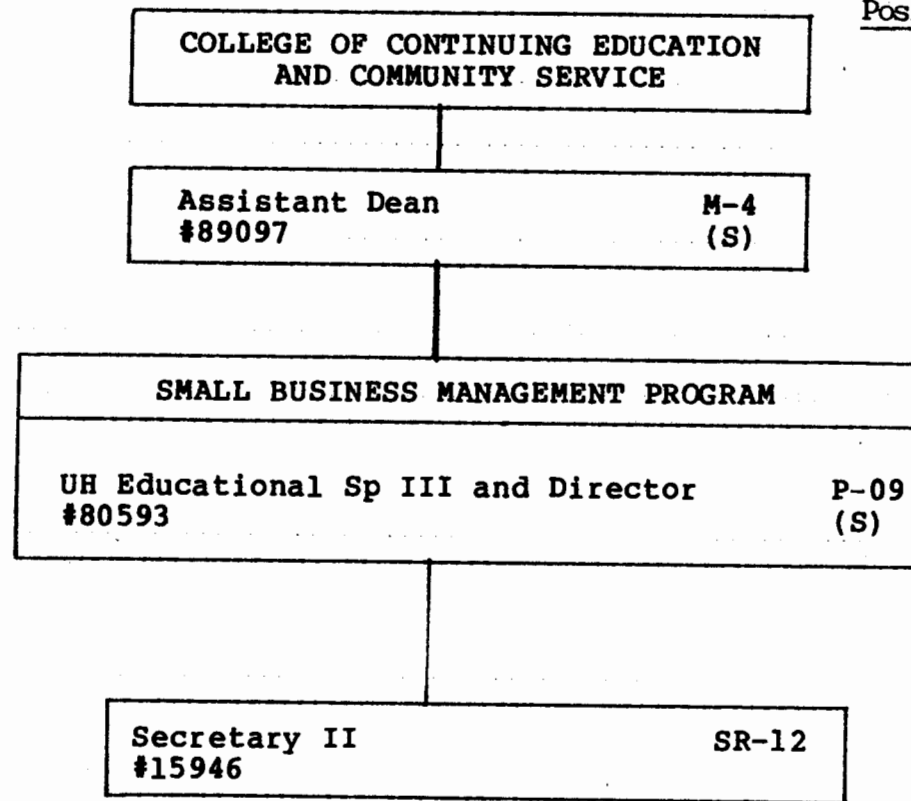
**Act 202, SLH 1976, Advisory Body to the Dean of CCECS.

JUL 1984

State of Hawaii
University of Hawaii at Manoa
College of Continuing Education
and Community Service

Small Business Management Program
Position Organization Chart

Chart VI



JUL 1984