

ORGANIZATION CHART
CHART I

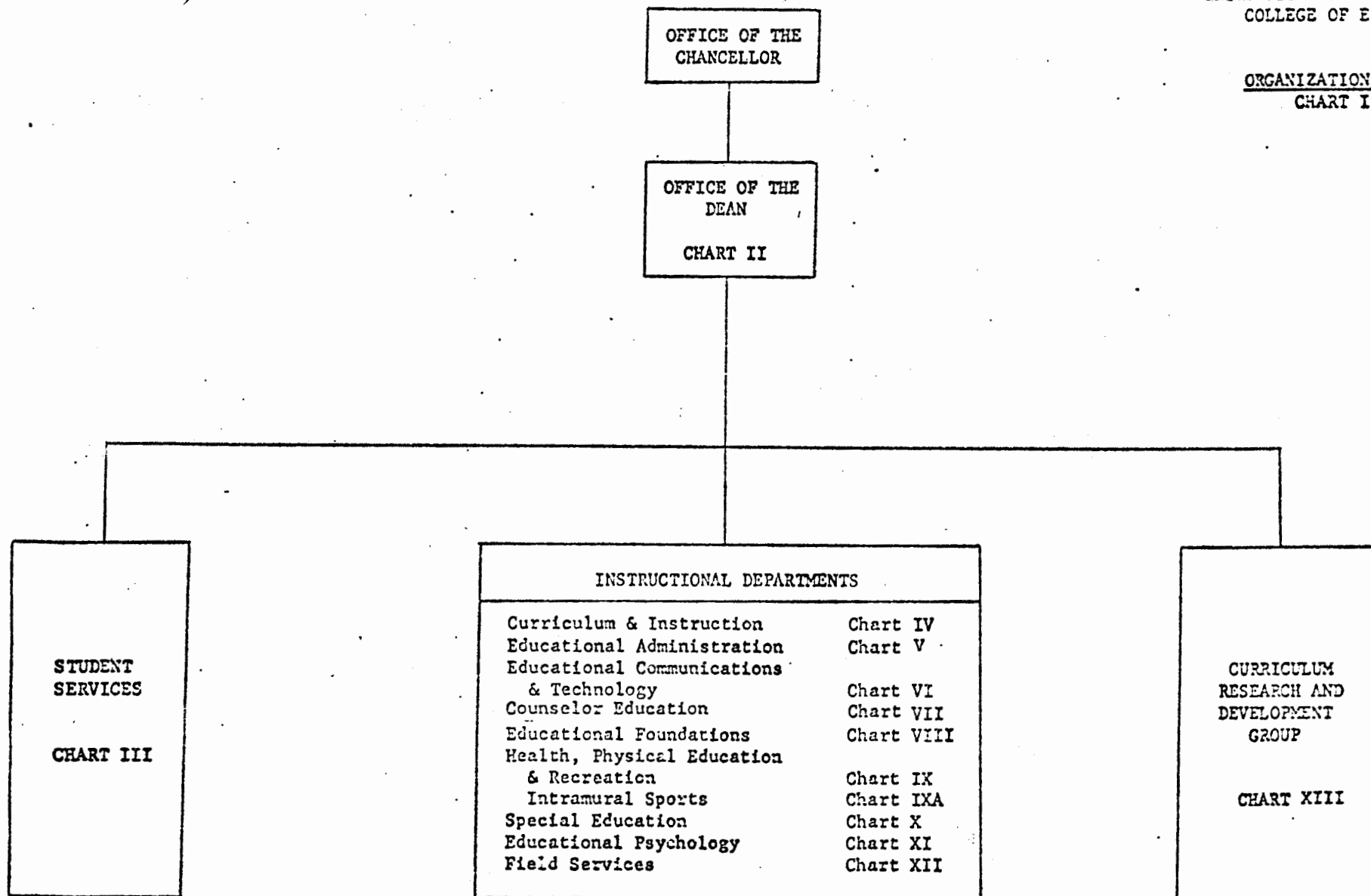


CHART UPDATED

Position Organization Chart

Chart II

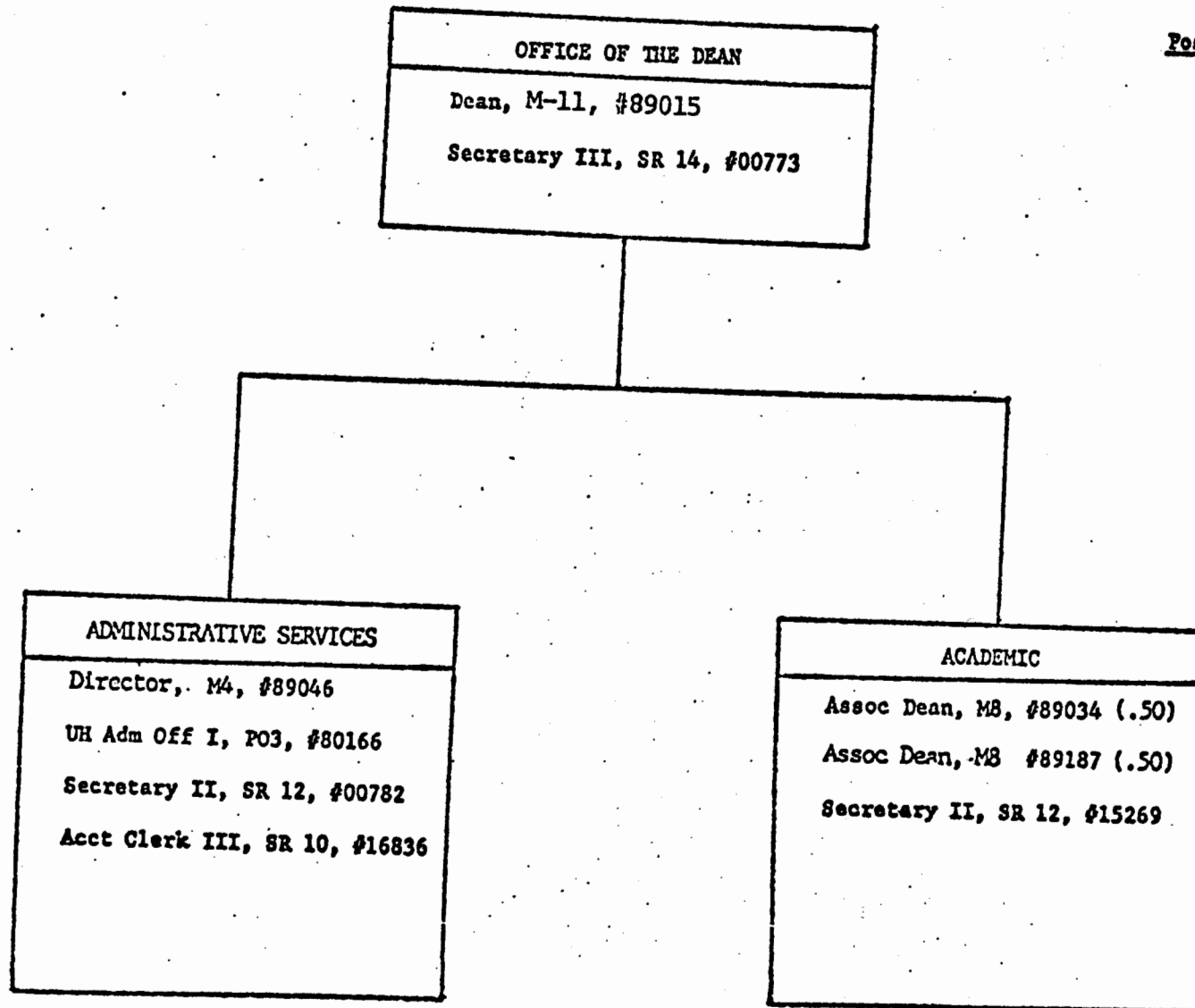


CHART UPDATED

DATE JUL 1983

OFFICE OF A&E

DEAN

UNIVERSITY OF ALABAMA AT
COLLEGE OF EDUCATION
STUDENT SERVICES

Position Organization Chart

Chart III

STUDENT SERVICES

Director, M4, #89000

Secretary II, SR 12, #15270

Clerk-Steno II, SR 9, #19558

Instructional Positions (3.00)

Full-time: #82423, #83450
#84544

CHART UPDATED

DATE JUL 1983

STATE OF HAWAII
UNIVERSITY OF HAWAII AT MANOA
COLLEGE OF EDUCATION
CURRICULUM & INSTRUCTION

OFFICE OF THE

DEAN

POSITION ORGANIZATION CHART

Chart IV

DEPARTMENT OF CURRICULUM AND INSTRUCTION

Chairman (Appointed from Instructional Positions)

Secretary II, SR 12, #00785

Clerk-Steno III, SR 11, #12844
Clerk-Steno II, SR 9, #15121 (.50)

Instructional Positions (24.00)

Full-time: #82250, #82043, #82093, #82144, #84090
#82288, #82300, #82347, #82632, #82711
#84529, #83084, #83335, #83922, #83923
#83954, #83672, #83995, #84407, #84527
#84670, #84680

Part-time: #83872 (.50), #88646 (.50), #85646 (.50),
#88298 (.50)

CHART UPDATED

JUL 1985

STATE OF HAWAII
UNIVERSITY OF HAWAII AT MANOA
COLLEGE OF EDUCATION
EDUCATIONAL ADMINISTRATION

OFFICE OF THE

DEAN

POSITION ORGANIZATION CHART

Chart V

DEPARTMENT OF EDUCATIONAL ADMINISTRATION

Chairman (Appointed from Instructional Positions)

Secretary II, SR 12, #17304

Instructional Positions (6.50)

Full-time: #82006, #82075, #84402, #84437
#84353, #85054

Part-time: #83091 (.50)

JUL 1985

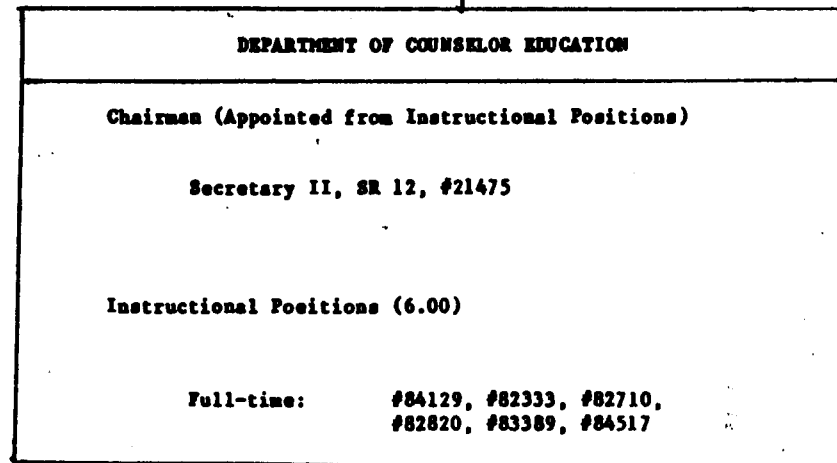
STATE OF HAWAII
UNIVERSITY OF HAWAII AT MANOA
COLLEGE OF EDUCATION
COUNSELOR EDUCATION

OFFICE OF THE

DEAN

POSITION ORGANIZATION CHART

Chart VII



DATE JUL 1985

STATE OF HAWAII
UNIVERSITY OF HAWAII AT MANOA
COLLEGE OF EDUCATION
EDUCATIONAL FOUNDATIONS

OFFICE OF THE

DEAN

POSITION ORGANIZATION CHART

Chart VIII

DEPARTMENT OF EDUCATIONAL FOUNDATIONS

Chairman (Appointed from Instructional Positions)

Secretary II, SR 12, #13672

Instructional Positions (7.00)

Full-time: #83952, #82617, #82678, #83196
#84261, #84835

Part-time: #82141 (.50), #83091 (.50)

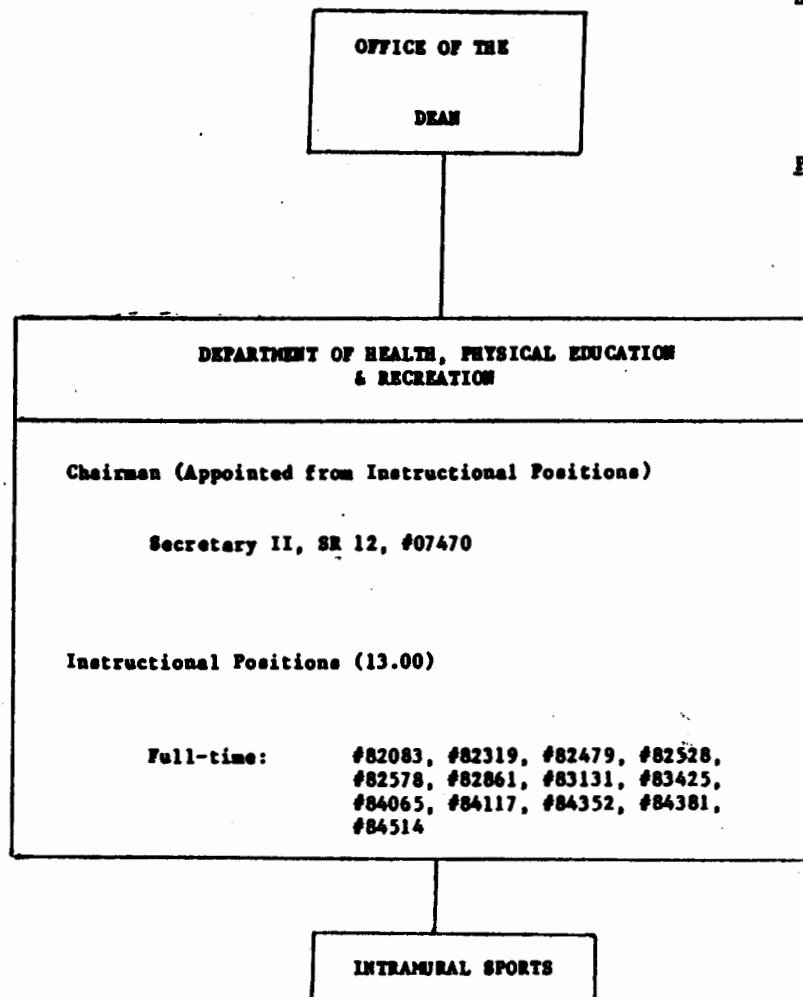
COMPILED BY

JUL 1985

STATE OF HAWAII
UNIVERSITY OF HAWAII AT MANOA
COLLEGE OF EDUCATION
HEALTH, PHYSICAL EDUCATION,
& RECREATION

POSITION ORGANIZATION CHART

Chart IX

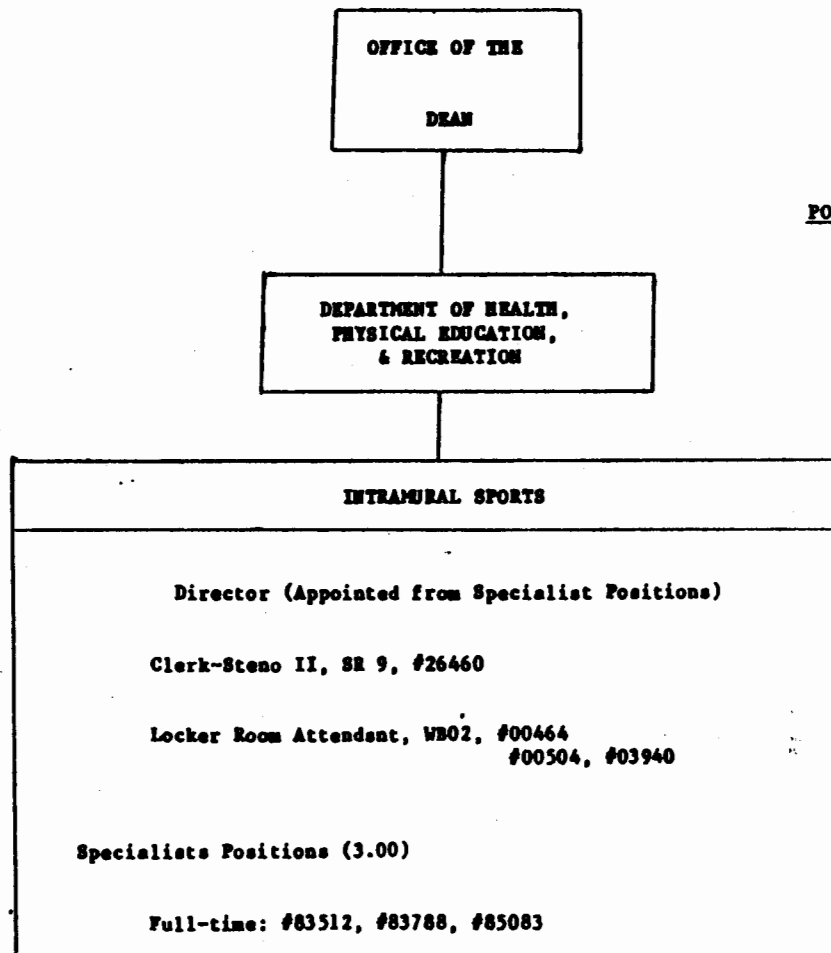


PAGE JUL 1985

STATE OF HAWAII
UNIVERSITY OF HAWAII AT MANOA
COLLEGE OF EDUCATION
INTRAMURAL SPORTS

POSITION ORGANIZATION CHART

Chart IXA



JUL 1985

STATE OF HAWAII
UNIVERSITY OF HAWAII AT MANOA
COLLEGE OF EDUCATION
SPECIAL EDUCATION

OFFICE OF THE

DEAN

POSITION ORGANIZATION CHART

Chart X

DEPARTMENT OF SPECIAL EDUCATION

Chairman (Appointed from Instructional Positions)

Secretary II, SR 12, #15141

Instructional Positions (7.00)

Full-time: #82069, #82575, #83987, #84307,
#84625, #82894, #82664

JUL 1985

OFFICE OF THE
DEAN

Position Organization Chart

Chart XI

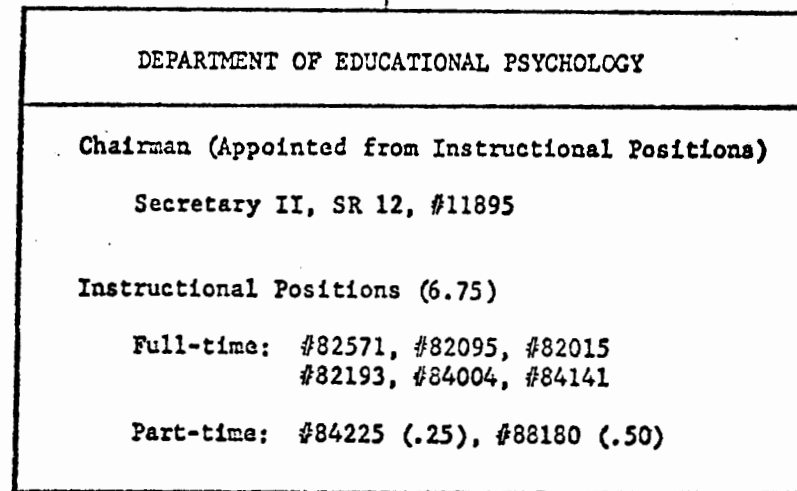


CHART UPDATED

DATE JUL 1982

OFFICE OF THE
DEAN

Position Organization Chart

Chart XII

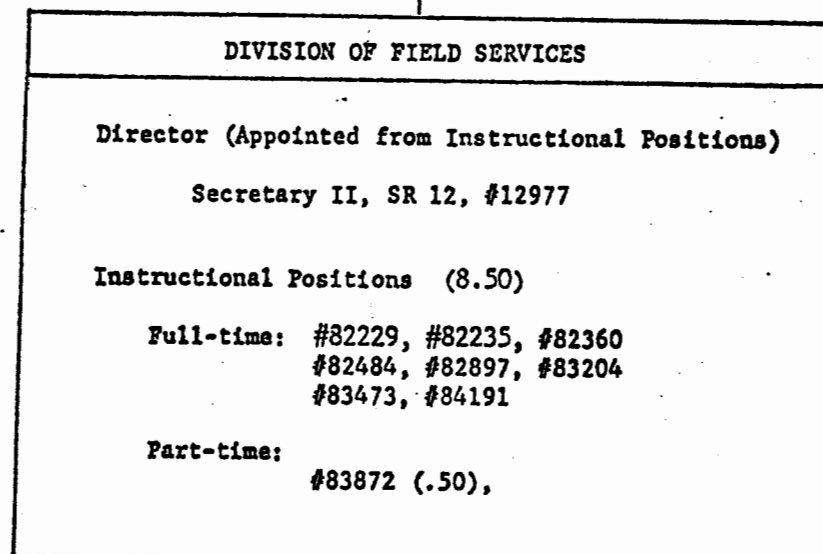
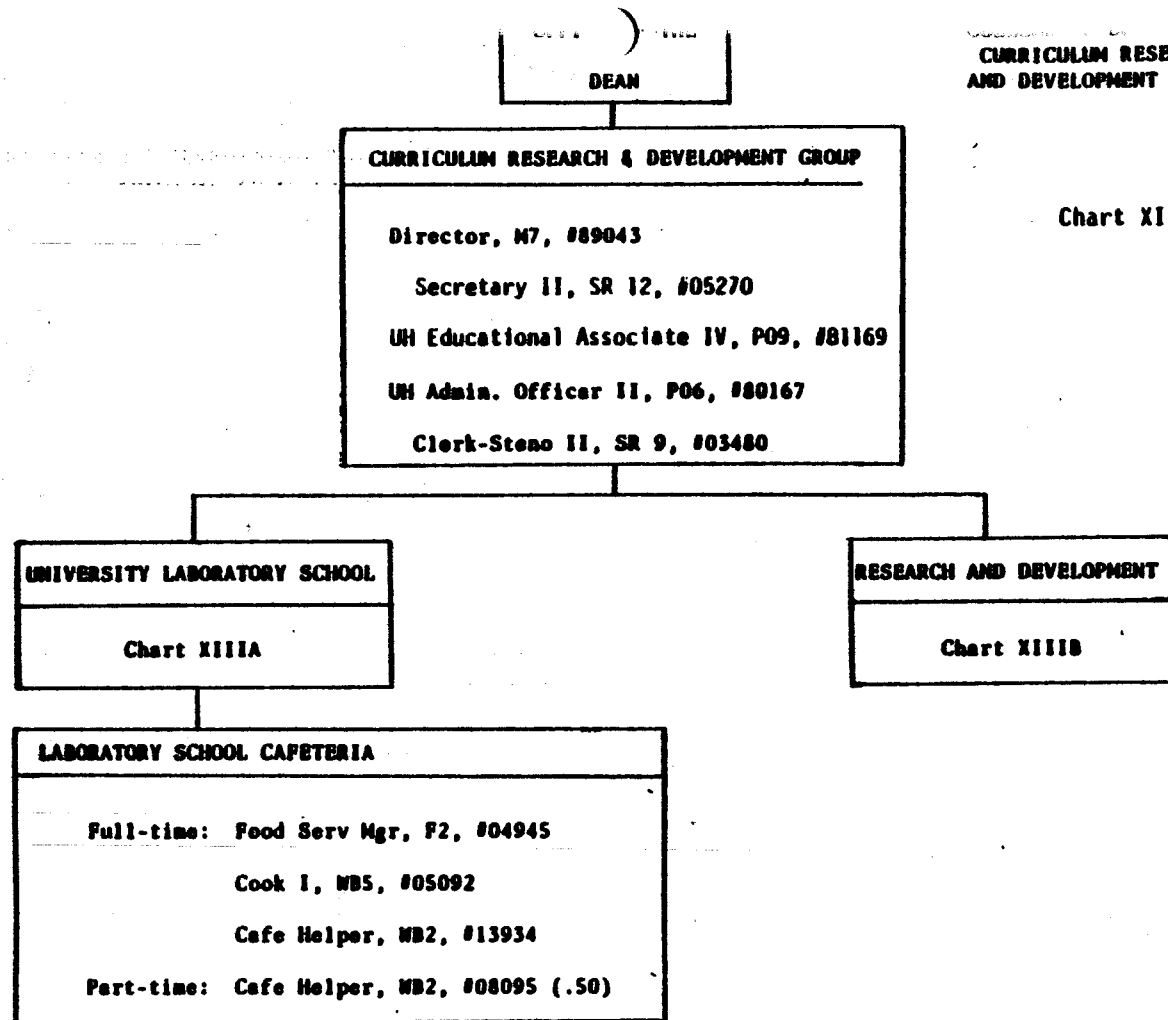


CHART UPDATED

DATE JUL 1983



**CURRICULUM RESEARCH
AND DEVELOPMENT GROUP**

Chart XIII

APPROVED:

Albert J. Simone

President, University of Hawaii

Date: OCT 28 1965

OFFICE OF THE
DEAN

CURRICULUM RESEARCH
AND DEVELOPMENT GROUP
UNIVERSITY LABORATORY SCHOOL

CURRICULUM RESEARCH
AND DEVELOPMENT GROUP
Director

Position Organization Chart

Chart XIII A

UNIVERSITY LABORATORY SCHOOL

Principal (Appointed from Instructional Positions)

Secretary II, SR 12, #00783

Instructional Positions (3.20)

Part-time: #82154 (.20), #84377 (.30), #82160 (.55), #83287 (.40), #84608 (.35),
#83227 (.05), #82793 (.20), #84077 (.10), #82950 (.20), #83380 (.85)

Administrative, Professional, Technical Positions: (11.65)

Full-time: UH Ed Assoc III, P07, #80433

Part-time: UH Ed Assoc VI, P13, #80476 (.05)

UH Ed Assoc V, P11, #80470 (.20), #80435 (.15), #80468 (.15), #80443 (.50)

UH Ed Assoc IV, P09, #80484 (.90), #80480 (.90), #80481 (.25), #80474 (.30), #80465 (.50),
#80466 (.40), #80463 (.80), #80472 (.30), #80482 (.10), #80485 (.50)

UH Ed Assoc III, P07, #80418 (.15), #80420 (.25), #80917 (.15), #81186 (.10), #80494 (.25),
#80993 (.80)

UH Ed Assoc II, P05, #80434 (.65), #81811 (.25), #80483 (.25)

UH Ed Assoc I, P03, #80464 (.80), #81170 (.75)

UH Pub. Spec II, P05, #80109 (.25)

APPROVED:

Albert J. Simone

President, University of Hawaii

Date: OCT 28 1985

OFFICE OF THE
DEAN

COLLEGE OF EDUCATION
CURRICULUM RESEARCH
AND DEVELOPMENT GROUP
RESEARCH AND DEVELOPMENT

CURRICULUM RESEARCH
AND DEVELOPMENT GROUP

Director

Position Organization Chart

Chart XIII B

RESEARCH AND DEVELOPMENT

Instructional Positions (11.30)

Full-time: #84031, #82387, #83951, #82272

Part-time: #83227 (.95), #82793 (.80), #84077 (.90), #82950 (.80), #82154 (.80), #84377 (.70),
#83287 (.60), #84608 (.65), #82141 (.50), #83380 (.15), #82160 (.45)

Administrative, Professional, Technical Positions (19.10)

Full-time: UH Ed Assoc VI, P13, #80486, #80495¹
UH Ed Assoc V, P11, #80440
UH Ed Assoc IV, P09, #80491
UH Ed Assoc III, P07, #80228

Part-time: UH Ed Assoc VI, P13, #80476 (.95)
UH Ed Assoc V, P11, #80470 (.80), #80435 (.85), #80468 (.85), #80443 (.50)
UH Ed Assoc IV, P09, #80484 (.10), #80480 (.10), #80481 (.75), #80474 (.70), #80465 (.50),
#80466 (.60), #80463 (.20), #80472 (.70), #80482 (.90), #80485 (.50)
UH Ed Assoc III, P07, #80418 (.85), #80420 (.75), #80917 (.85), #81186 (.40), #80494 (.75),
#80993 (.20)
UH Ed Assoc II, P05, #80434 (.10), #80483 (.75)
UH Ed Assoc I, P03, #80464 (.20)
UH Pub. Spec I, P05, #80109 (.25)

Clerk-Typist II, SR 08, #35206

APPROVED:

Albert J. Simone

President, University of Hawaii

Date: OCT 28 1965