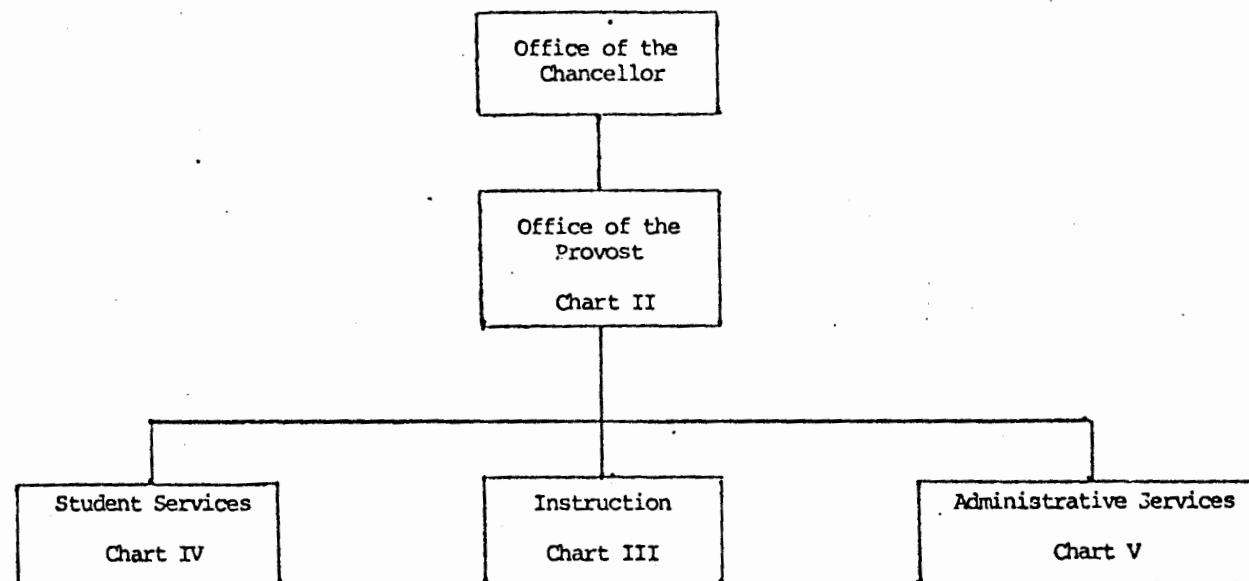


State of Hawaii  
University of Hawaii  
Kapiolani Community College

Organization Chart

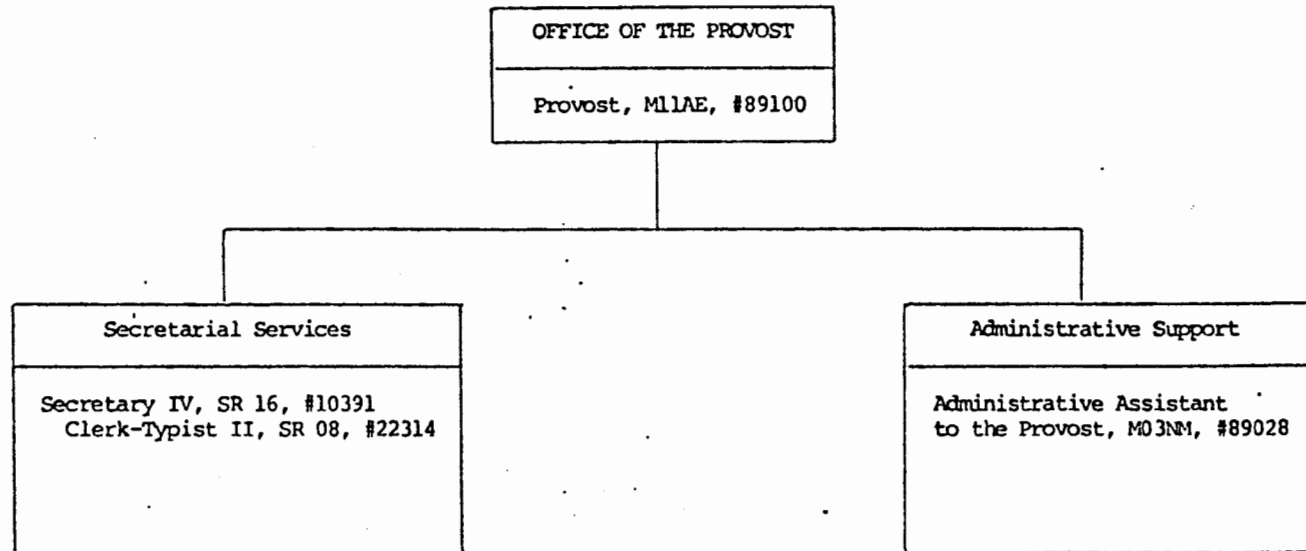
Chart I



**CHART UPDATED**  
DATE SEP 1986

Position Organization Chart

Chart II

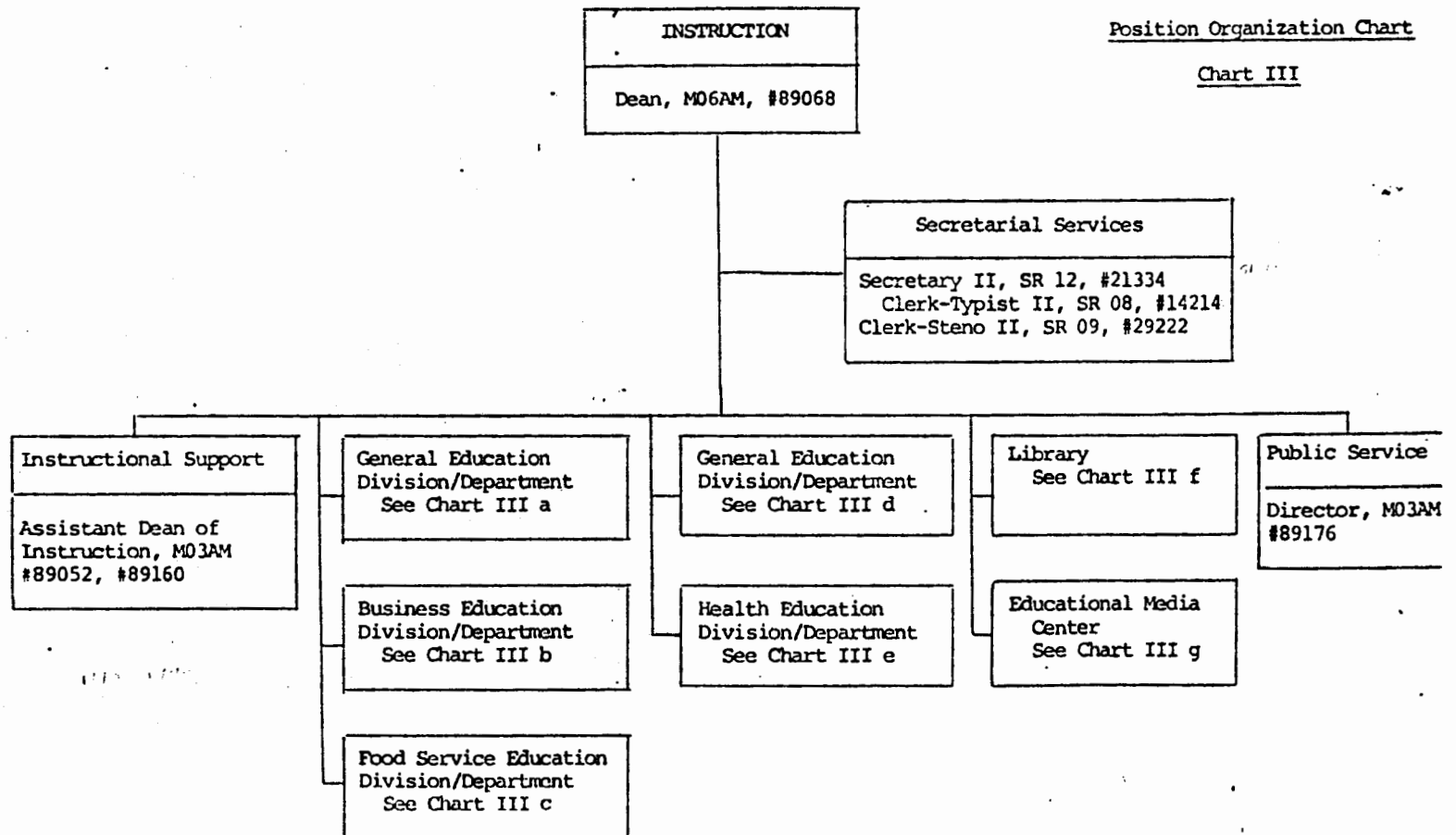


**CHART UPDATED**

DATE SEP 1986

Position Organization Chart

Chart III



**CHART UPDATED**

DATE SEP 1986

Position Organization Chart

Chart III a

General Education Division/Department	
<u>General Education</u>	
Social Science	
Chairperson, # _____ *	
<u>Instructors</u>	Total (10.00)
Full-time: #83745, #84972, #84973, #83642, #82152, #82706, #82935, #83492, #83560, #87403	
Language Arts	
Chairperson, # _____ *	
<u>Instructors</u>	Total (14.00)
Full-time: #83559, #82178, #83783, #83903, #82232, #82555, #82776, #83308, #83447, #83870, #84327, #84409, #83795, #83123	
Paralegal Program	
Chairperson, # _____ *	
<u>Instructors</u>	Total (1.00)
Full-time: #83360	
General Education, Clerical Staff**	
Secretary II, SR 12, #22313	
Clerk-Typist II, SR 08, #26658, #22310	
Clerk-Steno II, SR 09, #26763	

\*Chairperson is appointed from among instructional positions within department.

\*\*Secretarial and Clerical staff serves all four General Education Departments--Social Science, Language Arts, Mathematics/Sciences, and Humanities.

CHART UPDATED

DATE SEP 1986

State of Hawaii  
University of Hawaii  
Kapiolani Community College  
Instruction

Position Organization Chart

Chart III b

Business Education Division/Department	
<u>Business Education</u>	
Accounting/Data Processing	
Chairperson, # _____ *	
Instructors	Total (10.00)
Full-time: #82026, #82066, #82728, #82931, #82795, #83221, #84337, #82503, #84882, #83901	
Business Administration	
Chairperson, # _____ *	
Instructors	Total (7.00)
Full-time: #82031, #82218, #82231, #82429, #82389, #84150, #84369	
Secretarial Science	
Chairperson, # _____ *	
Instructors	Total (9.00)
Full-time: #82348, #82380, #82876, #83071, #83734, #83771, #84072, #84223, #84370	
Business Education, Clerical Staff	
Secretary II, SR 12, #22312	
Clerk-Typist II, SR 08, #18092	

\*Chairperson is appointed from among instructional positions within department.

**CHART UPDATED**

DATE SEP 1986

Position Organization Chart

Chart III c

Food Service and Hospitality Education Division/Department	
<u>Food Service and Hospitality Education</u>	
Chairperson, # _____ *	
<u>Instructors</u>	Total (12.00)
Full-time: #82540, #82970, #83225, #83460, #83684,	
#84091, #84103, #84304, #84539, #82683,	
#82467, #83133	
Food Service, Clerical Staff	
Secretary II, SR 12, #16962	
Cook III, WB 08, #22318 (w)	
Snack Bar Cashier, SR 06, #22319 (w)	
Clerk-Typist II, SR 08, #29010 (w)	
Cafeteria Helper, WB 02, #32863 (w)	

\*Chairperson is appointed from among instructional positions within department.

(w) Represents positions funded by the Food Service Revolving Fund.

**CHART UPDATED**

DATE SEP 1986

State of Hawaii  
University of Hawaii  
Kapiolani Community College  
Instruction

Position Organization Chart

Chart III d

General Education Division/Department	
<u>General Education</u>	
Mathematics/Sciences	
Chairperson, # _____	*
Instructors	Total (12.00)
Full-time:	#82492, #82981, #83974, #84458, #82394, #83096, #83262, #83688, #83733, #83357, #83939, #87401
Humanities	
Chairperson, # _____	*
Instructors	Total (12.00)
Full-time:	#84971, #83094, #82631, #82925, #83809, #84974, #82607, #84470, #82052, #82983, #87402, #87404

\*Chairperson is appointed from among instructional positions within department.

**CHART UPDATED**  
DATE SEP 1986

Position Organization Chart

Chart III e

Health Education Division/Department	
<u>Health Education</u>	
Allied Health Chairperson, # _____ *	
<u>Instructors</u>	Total (11.10)
Full-Time: #84326, #83310, #83667, #82121, #82405, #82576, #83321, #82162, #85821, #86385, #86384	
Part-Time: #87052 (.10)	
Nursing Chairperson, # _____ *	
<u>Instructors</u>	Total (7.00)
Full-Time: #82064, #82513, #84487, #84629, #84655, #82244	
Part-Time: #84308 (.50), #84308A (.50)	
Health Education, Clerical Staff	
Secretary II, SR-12, #18093	
Clerk-Steno II, SR-09, #32952	

\*Chairperson is appointed from among instructional positions within department.

**CHART UPDATED**

DATE SEP 1986



Library
<p>Instructor III (Librarian), #84185</p> <p>Instructor II (Librarian), #84438</p> <p>Instructor II (Assistant Librarian), #83504</p> <p>Library Assistant IV, SR 09, #18087, #22311, #26762</p>

State of Hawaii  
University of Hawaii  
Kapiolani Community College  
Instruction

Position Organization Chart

Chart III f

**CHART UPDATED**

DATE SEP 1986

State of Hawaii  
University of Hawaii  
Kapiolani Community College  
Instruction

Position Organization Chart

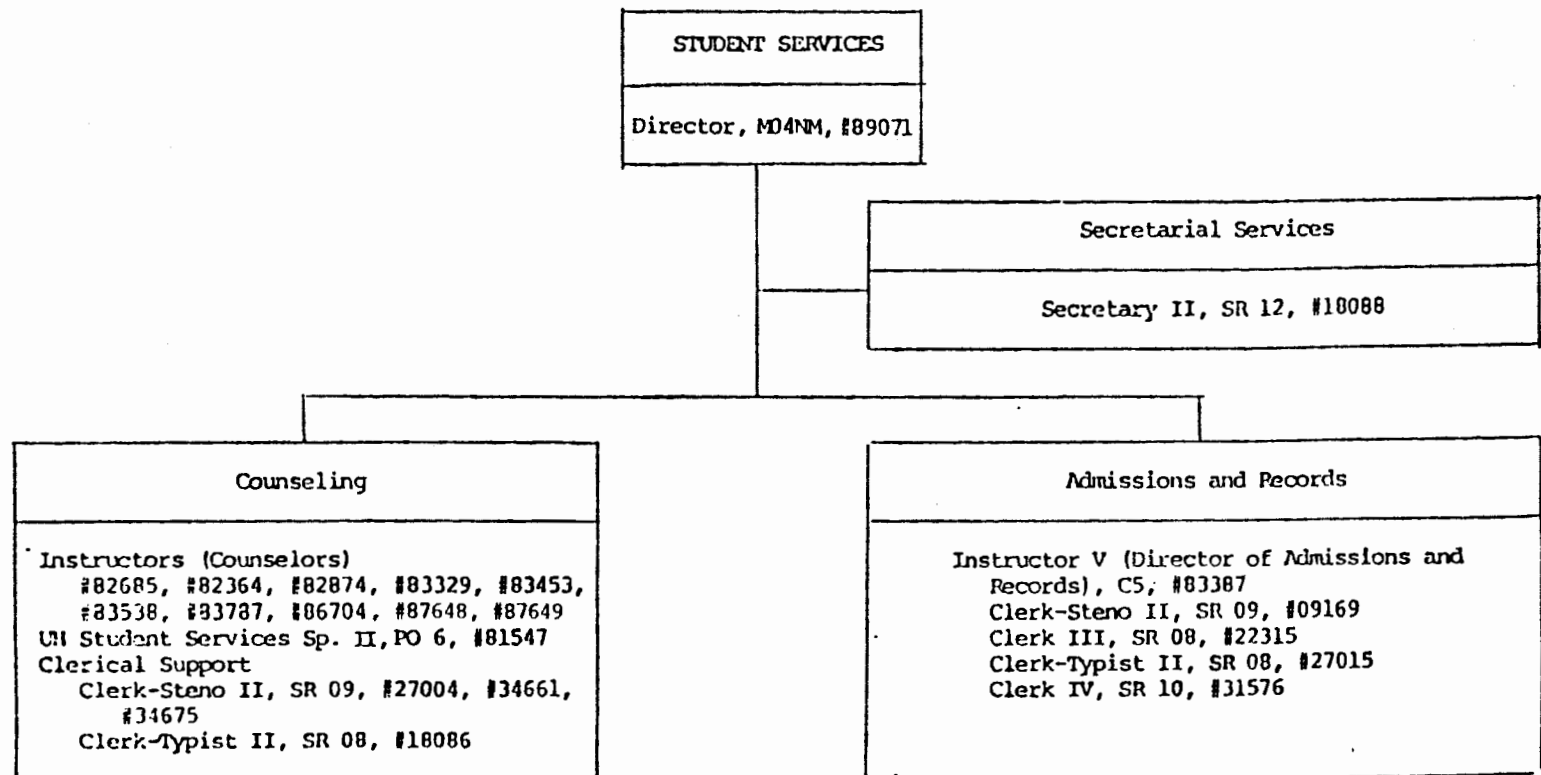
Chart III g

Educational Media Center
Instructor V (Director of Educational Media), C5, #82386 UH Graphic Artist II, P05, #80694 UH Electronics Technician II, P09, #80034 UH Electronics Technician I, P06, #81277 Instructor V (Media Instructional Development Specialist), C5, #87603 Clerk-Steno III, SR 11, #21321

**CHART UPDATED**  
DATE SEP 1986

Position Organization Chart

Chart IV

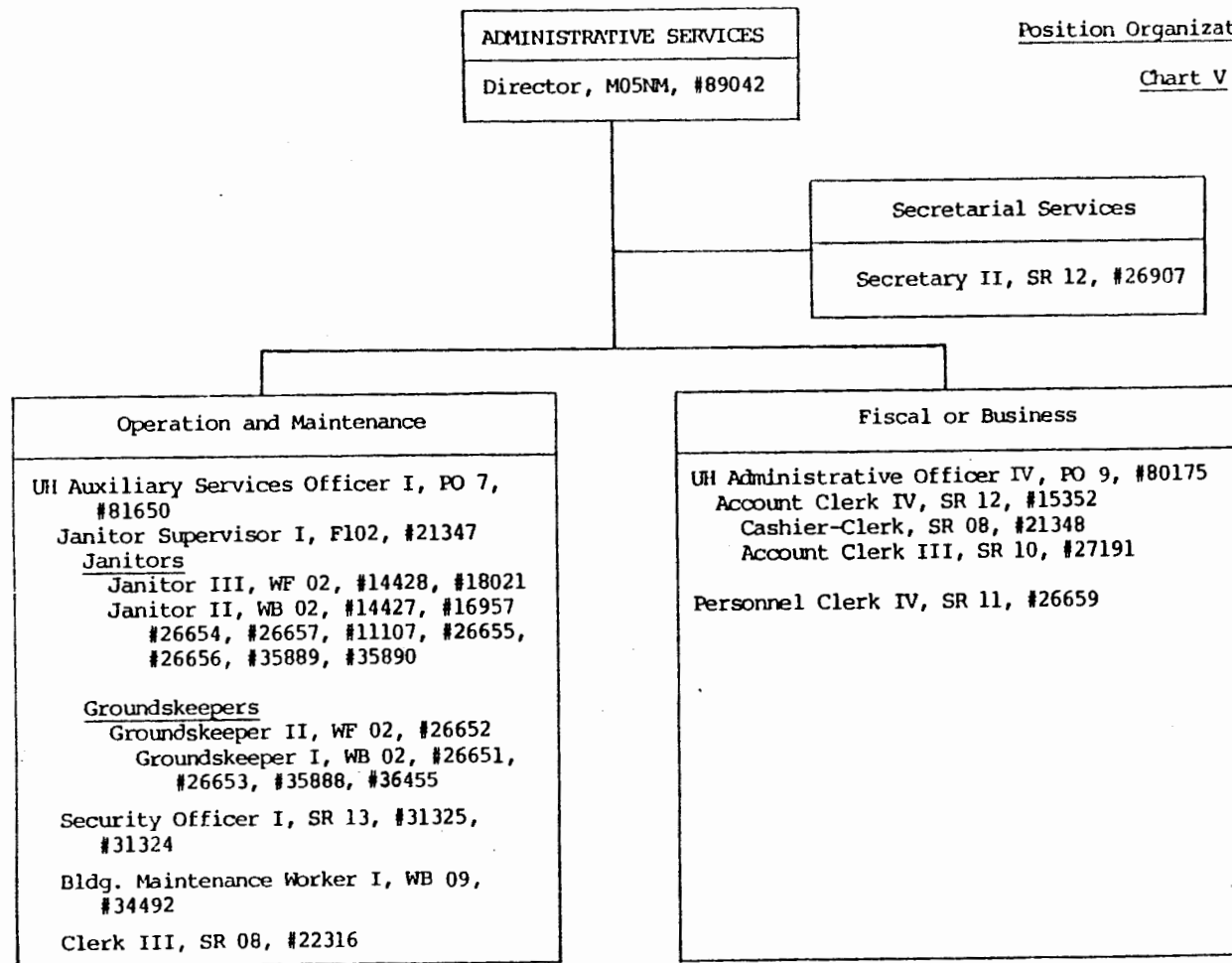


**CHART UPDATED**

DATE SEP 1986

Position Organization Chart

Chart V



**CHART UPDATED**  
DATE SEP 1986