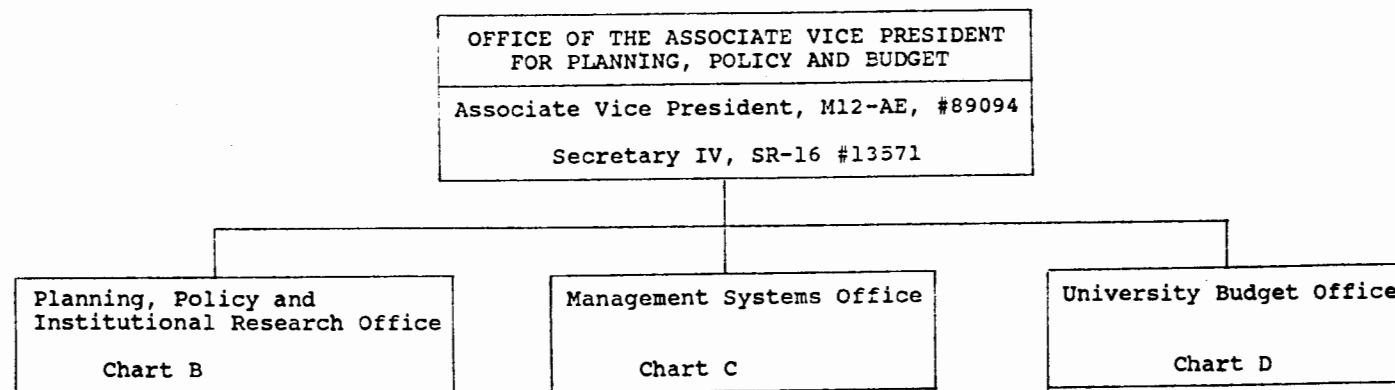


STATE OF HAWAII
SYSTEMWIDE ADMINISTRATION
ASSOCIATE VICE PRESIDENT FOR
PLANNING, POLICY AND BUDGET

Office of the Associate Vice President

Position Organization Chart

Chart A



APPROVED:

Albert J. Simone, FEB 13 1986
ALBERT J. SIMONE Date

CHART UPDATED

DATE FEB 13 1986

STATE OF HAWAII
SYSTEMWIDE ADMINISTRATION
ASSOCIATE VICE PRESIDENT FOR
PLANNING, POLICY AND BUDGET

Planning, Policy and
Institutional Research

Chart B

PLANNING, POLICY AND
INSTITUTIONAL RESEARCH OFFICE
Director of Planning and Policy
M10-AM, #89173
Secretary IV, SR-16, #17481

PLANNING SECTION	POLICY SECTION	INSTITUTIONAL RESEARCH SECTION
Planning Officer, M05-AM, (new) Secretary II, SR-12, (new)	Policy Officer, M05-AM, #89013 ^{1/} Educational Specialist III, ^{2/} P-09, #80015	Director, M05-AM, #80222 ^{3/} Secretary III, SR-14, #19069 Institutional Analyst IV, P-12, #80223 ^{4/} Institutional Analyst III, P-10, #80220 Institutional Analyst II, P-08, #80217 ^{5/} Institutional Analyst I, P-04, #80213 Computer Specialist III, P-07, #80218 ^{6/}

^{1/} Position currently classified as Student Affairs Program
and Policy Officer (M04, NM)

^{2/} Position currently classified as Student Services Specialist III,
(P09)

^{3/} Position currently classified as Institutional Analyst IV, (P12)

^{4/} Position currently classified as Institutional Analyst III, (P10)

^{5/} Position identified for reduction; will be reallocated

APPROVED:

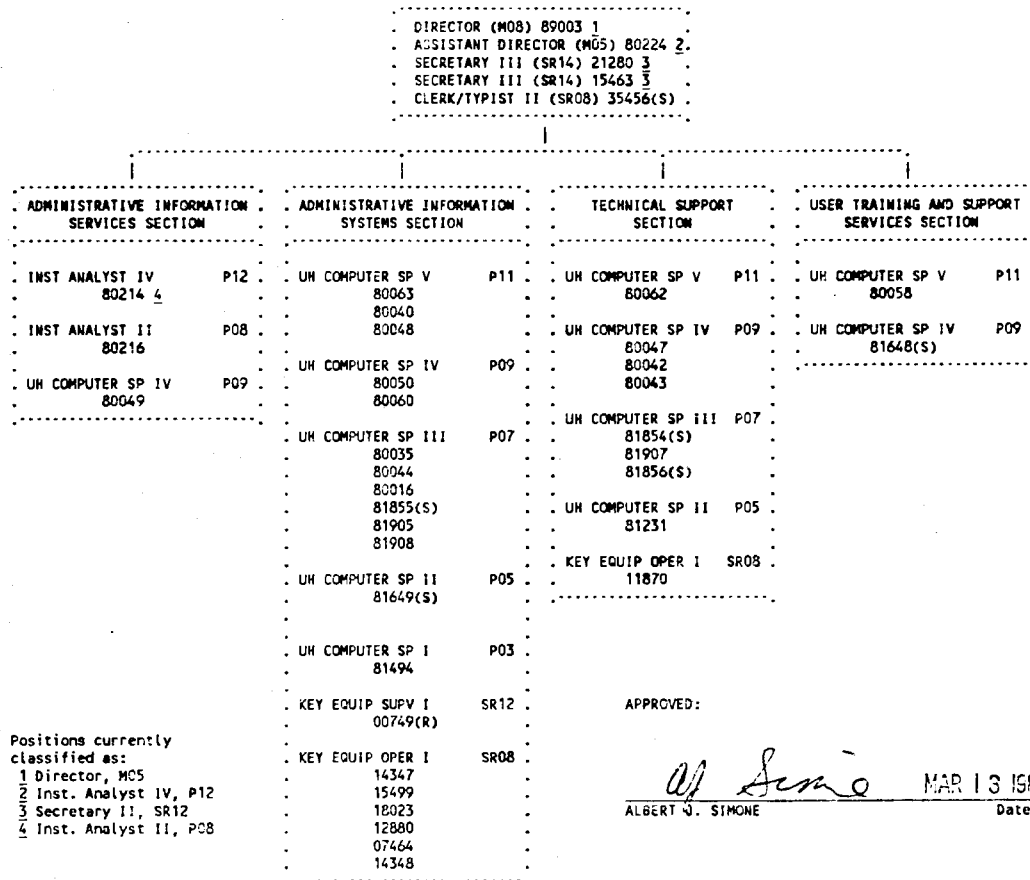
Albert J. Simone FEB 13 1986
ALBERT J. SIMONE Date

CHART UPDATED

DATE FEB 13 1986

STATE OF HAWAII
UNIVERSITY OF HAWAII
SYSTEMWIDE ADMINISTRATION
ASSOCIATE VICE PRESIDENT FOR PLANNING, POLICY & BUDGET

Management Systems Office
Chart C



Positions currently
classified as:

- 1 Director, MCS
- 2 Inst. Analyst IV, P12
- 3 Secretary II, SR12
- 4 Inst. Analyst II, P08

APPROVED:

Albert J. Simone
ALBERT J. SIMONE

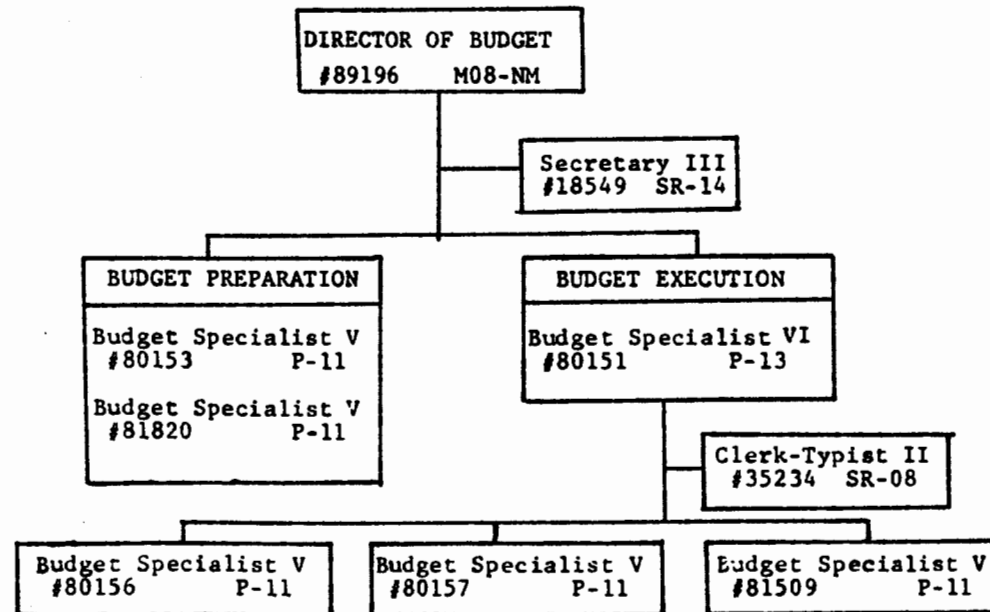
MAR 13 1986
Date

CHART UPDATED

DATE **MAR 13 1986**

MAR 13 1986

STATE OF HAWAII
SYSTEMWIDE ADMINISTRATION
ASSOCIATE VICE PRESIDENT FOR
PLANNING, POLICY AND BUDGET
University Budget Office
Chart D



APPROVED:


Kenji Sumida 5/1/86
Date

CHART UPDATED

DATE 1986