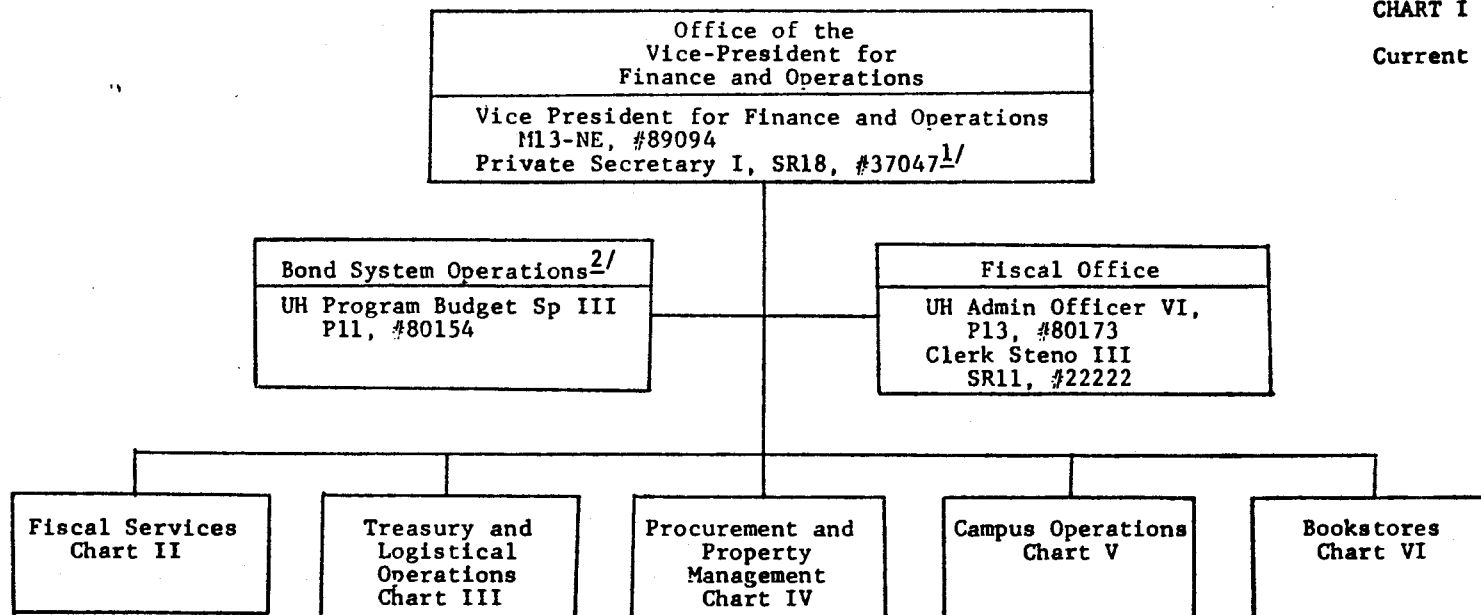


State of Hawaii
University of Hawaii
Systemwide Administration
Vice President for Finance and
Operations

CHART I

Current



^{1/} Temporary position; reference permanent position #16966.

^{2/} See Chart I-A.

CHART UPDATED

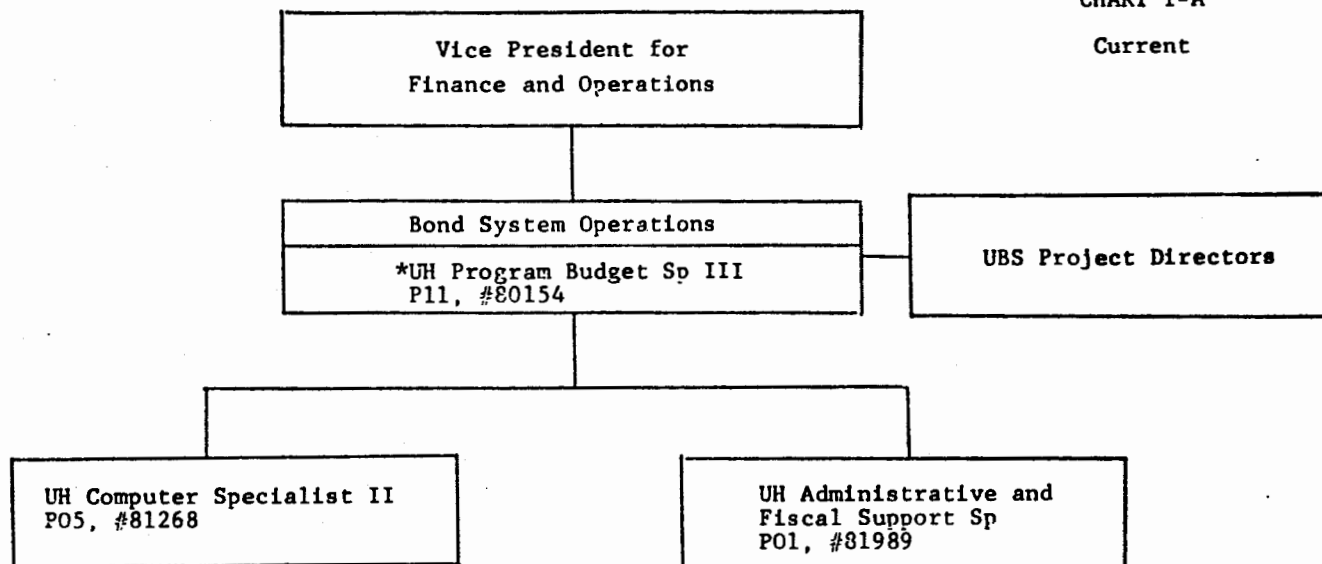
DATE SEP 1986

State of Hawaii
University of Hawaii
Systemwide Administration
Vice President for Finance
and Operations

BOND SYSTEM OPERATIONS

CHART I-A

Current



*To be redescribed.

CHART UPDATED

DATE SEP 1986

STATE OF HAWAII
UNIVERSITY OF HAWAII

VICE PRESIDENT FOR FINANCE
AND OPERATIONS

FISCAL SERVICES

CHART II

CURRENT

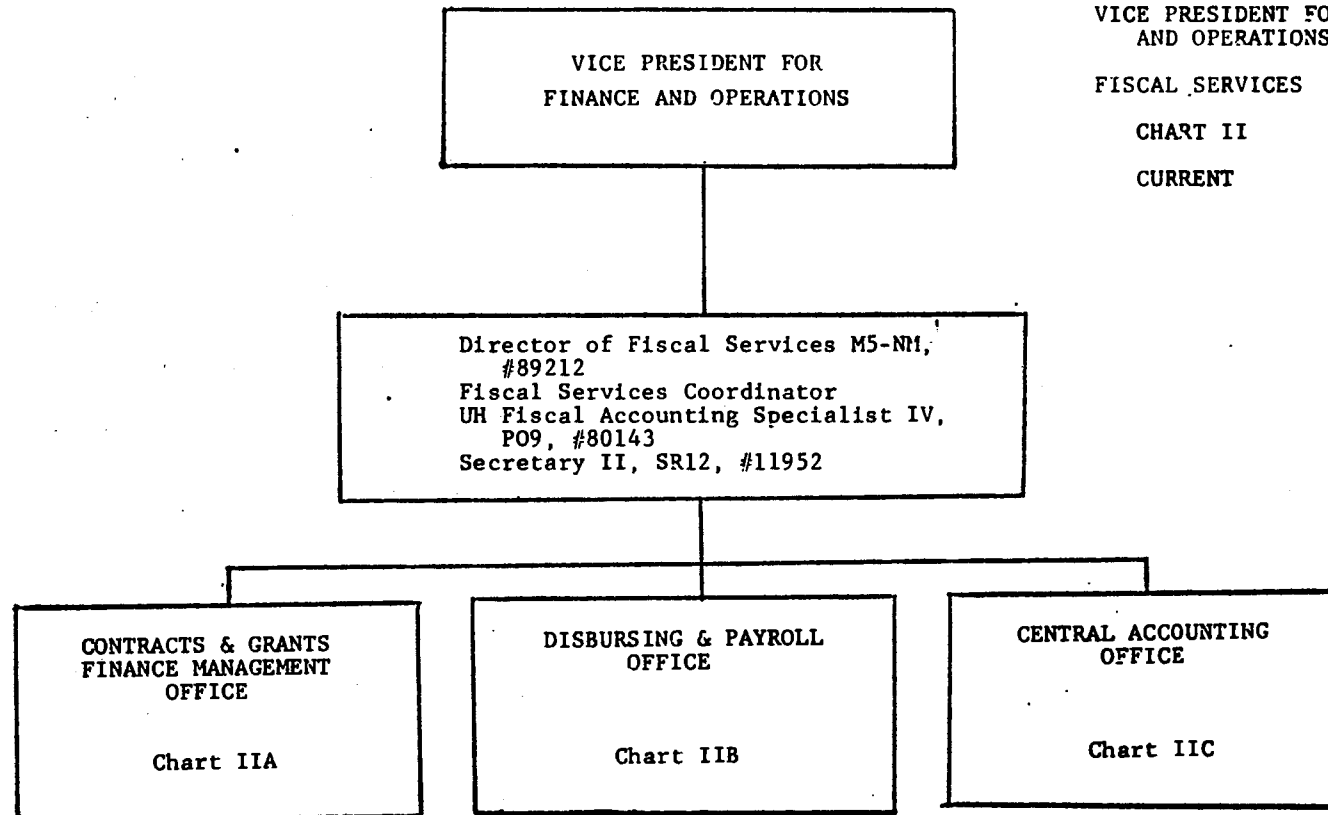


CHART UPDATED

DATE SEP 1986

State of Hawaii
University of Hawaii

Vice President for
Finance and Operations

Fiscal Services
Contracts and Grants
Finance Management Office

Chart IIA

Current

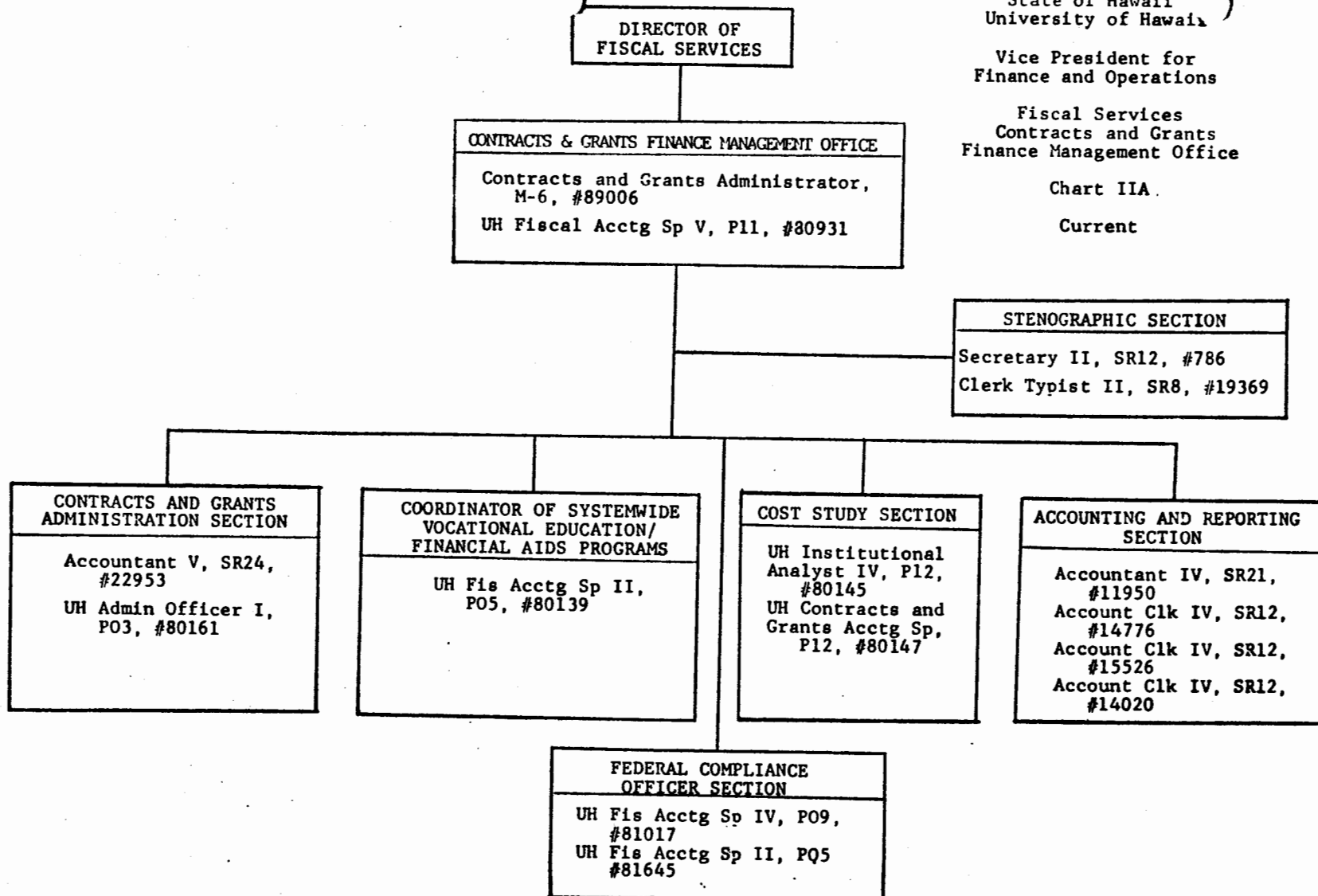


CHART UPDATED

DATE SEP 1986

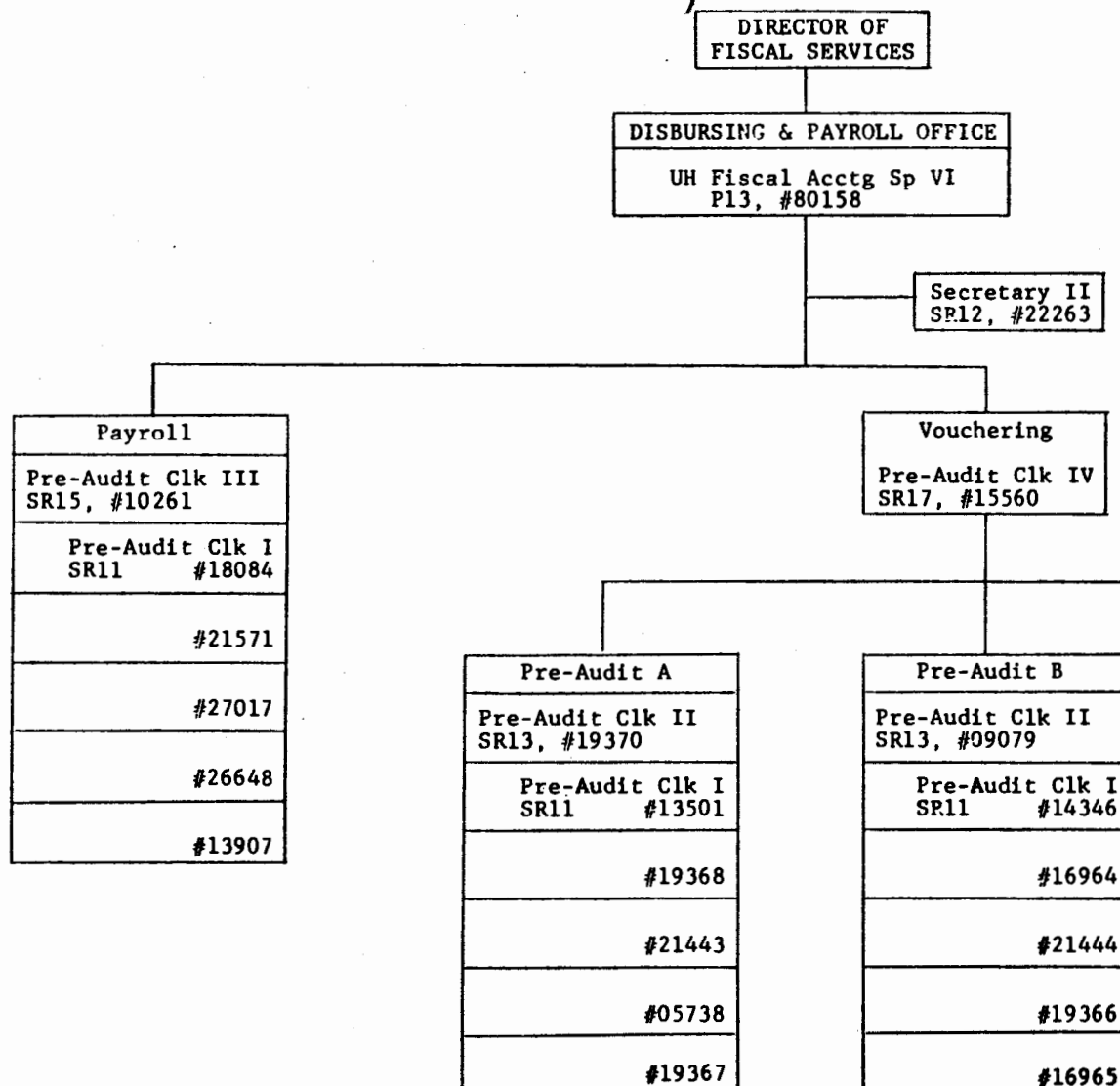


CHART UPDATED

DATE SEP 1986

UNIVERSITY OF HAWAII

VICE PRESIDENT FOR FINANCE AND
OPERATIONS

FISCAL SERVICES
CENTRAL ACCOUNTING OFFICE

CHART IIC

CURRENT

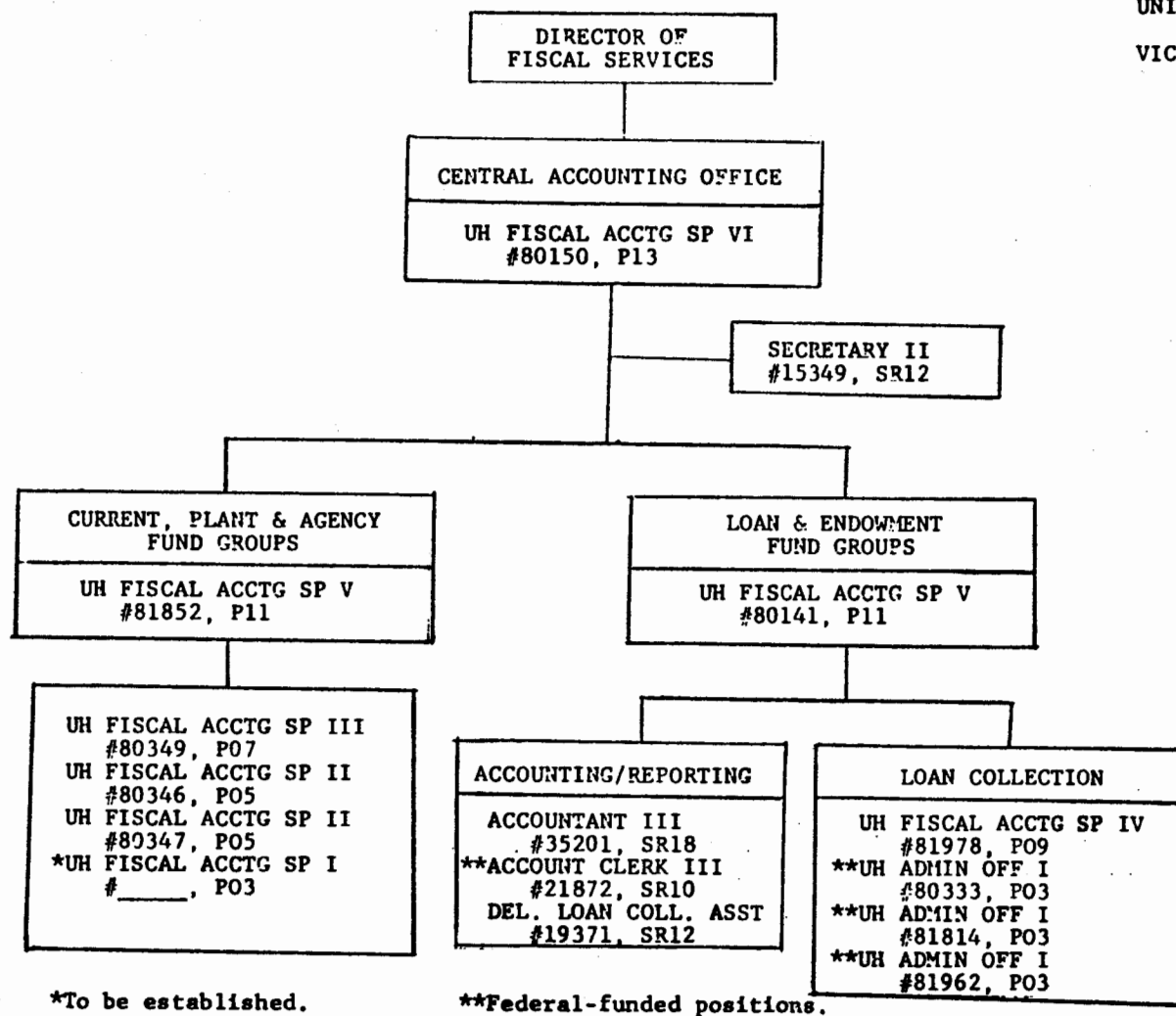
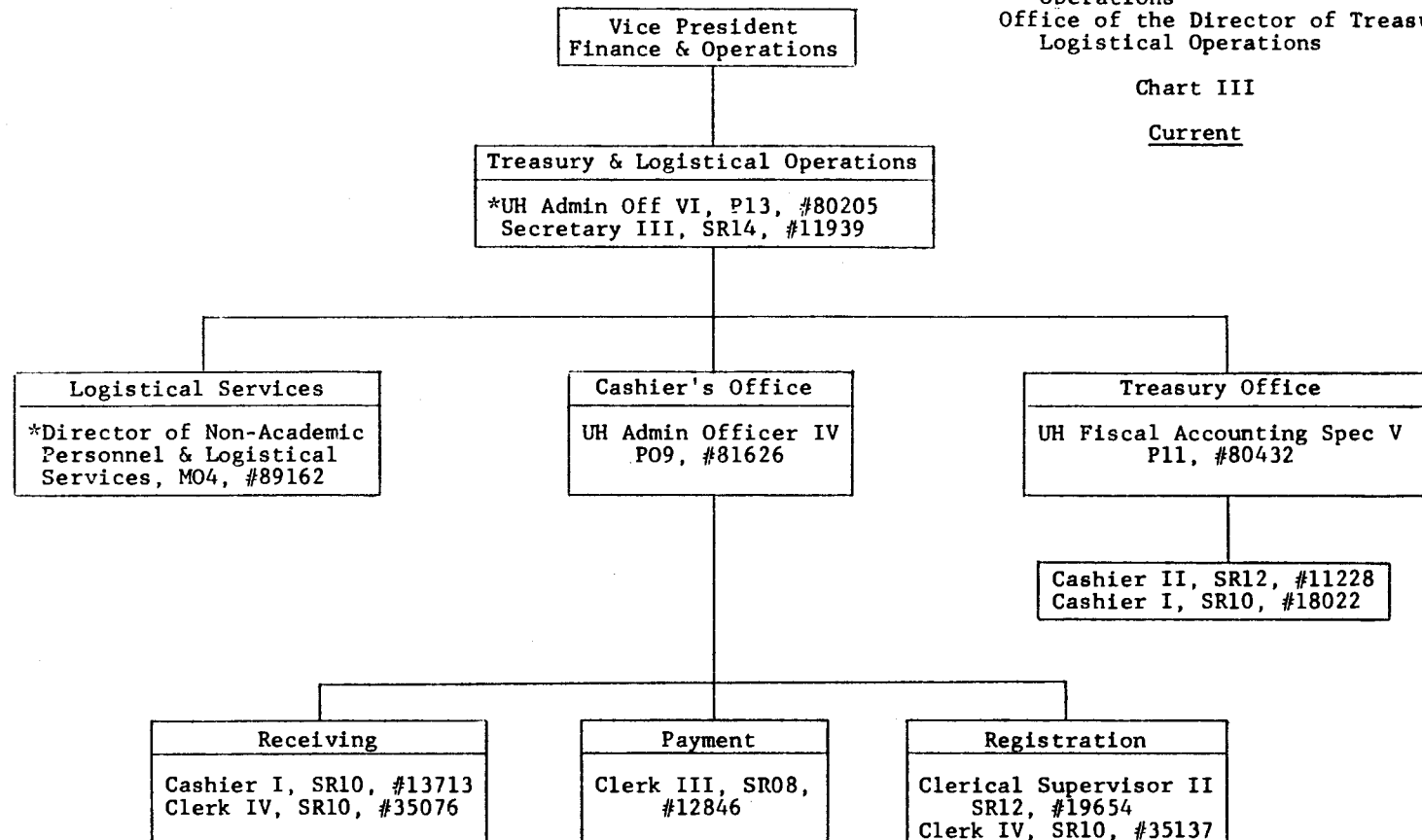


CHART UPDATED
DATE SEP 1986

State of Hawaii
University of Hawaii
Vice President for Finance and
Operations
Office of the Director of Treasury &
Logistical Operations

Chart III

Current

*To be redescribed and reclassified.

CHART UPDATED
DATE SEP 1986

State of Hawaii
University of Hawaii
Vice President for Finance
and Operations
Procurement & Property
Management Office

CHART IV

Current

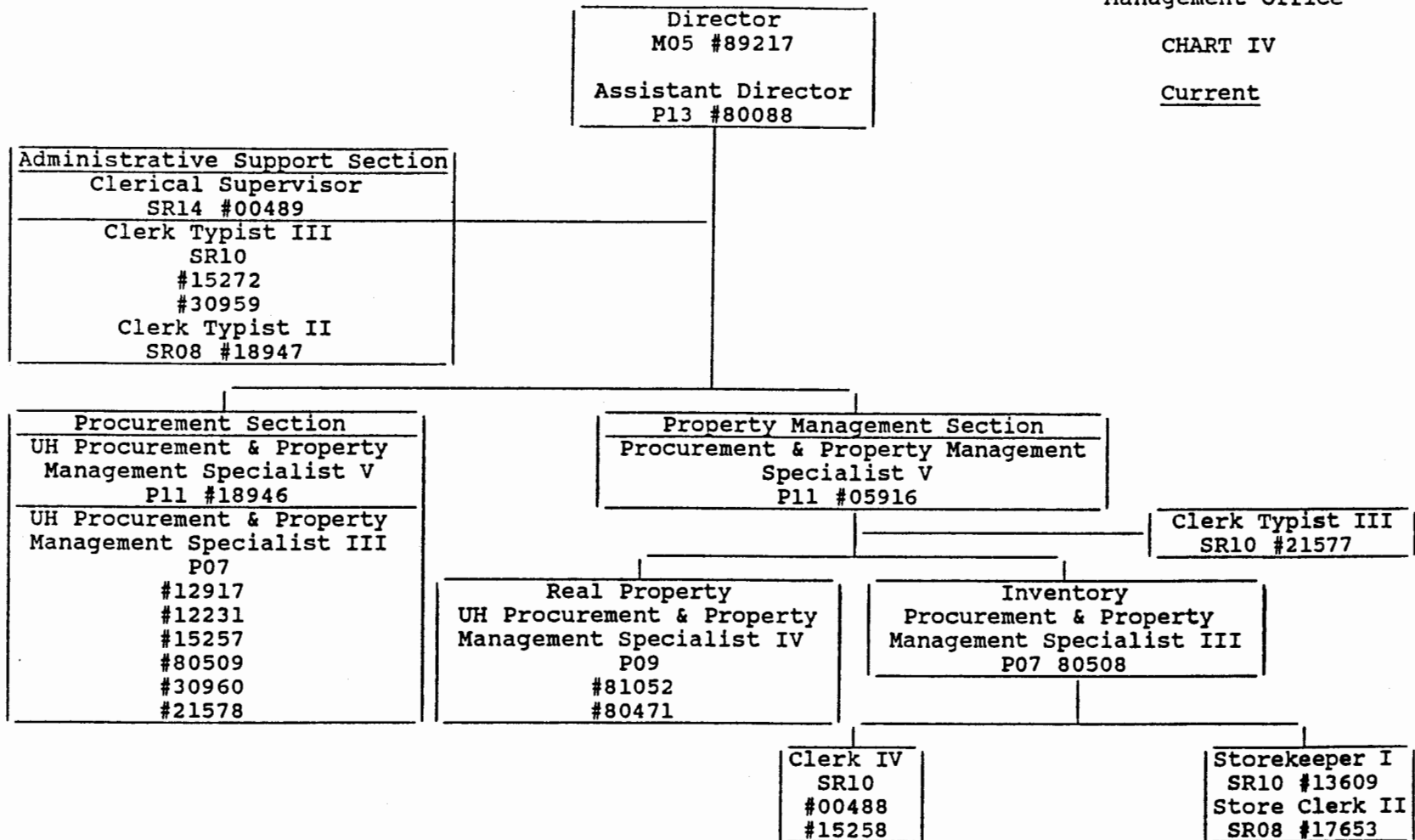


CHART UPDATED

DATE SEP 1986

STATE OF HAWAII
UNIVERSITY OF HAWAII
UNIVERSITY OF HAWAII AT MANOA
Vice President for Finance and Operations

CAMPUS OPERATIONS
Chart V

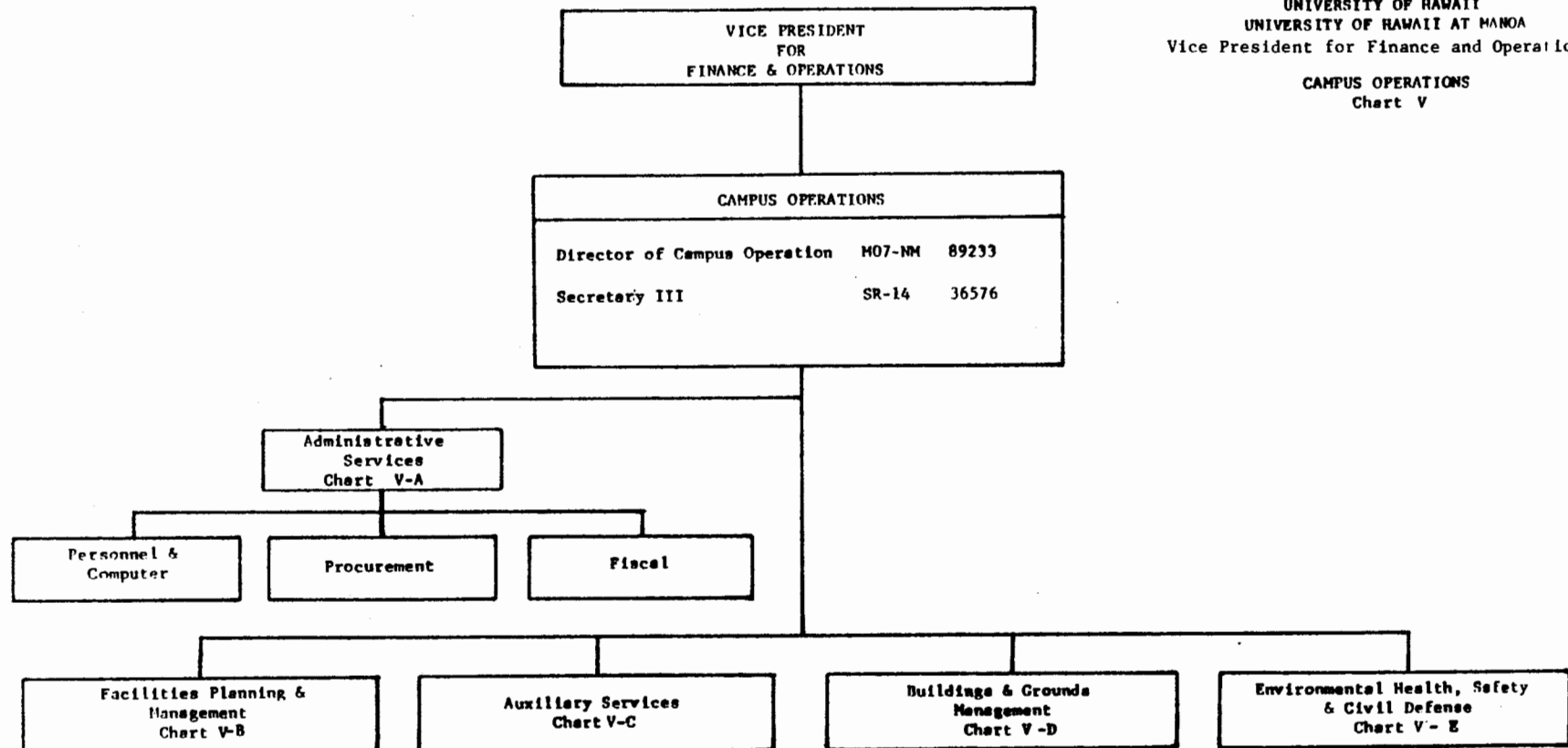
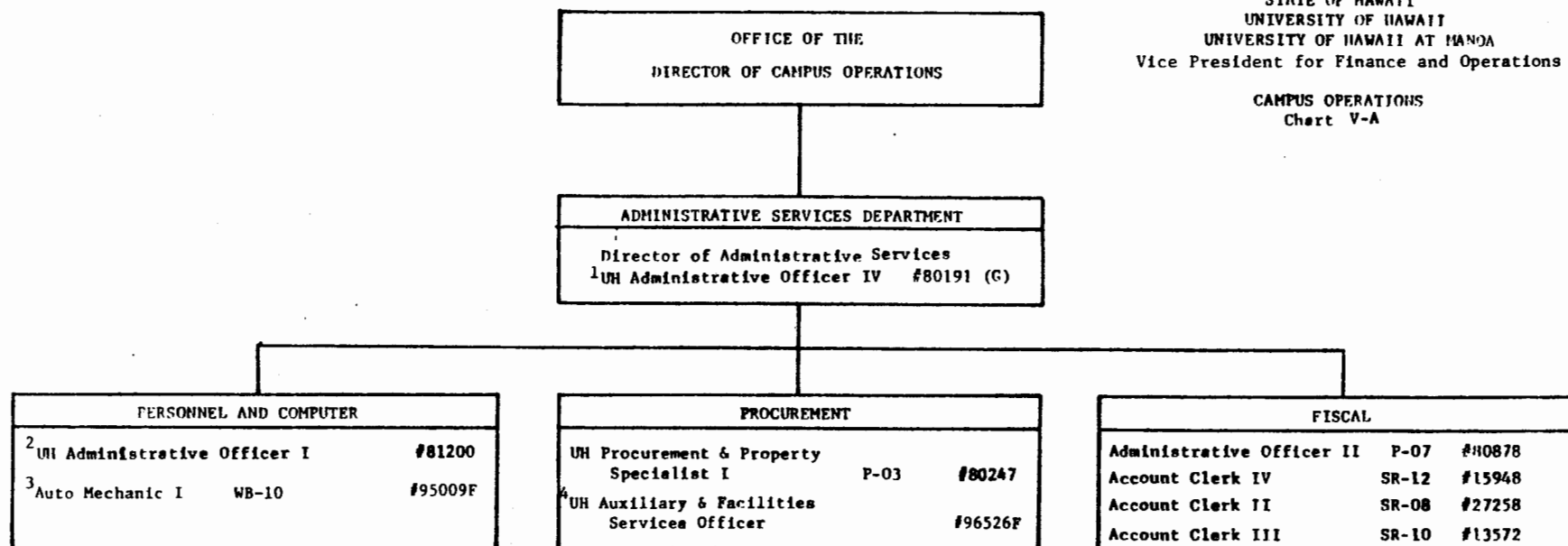


CHART UPDATED

DATE SEP 1986

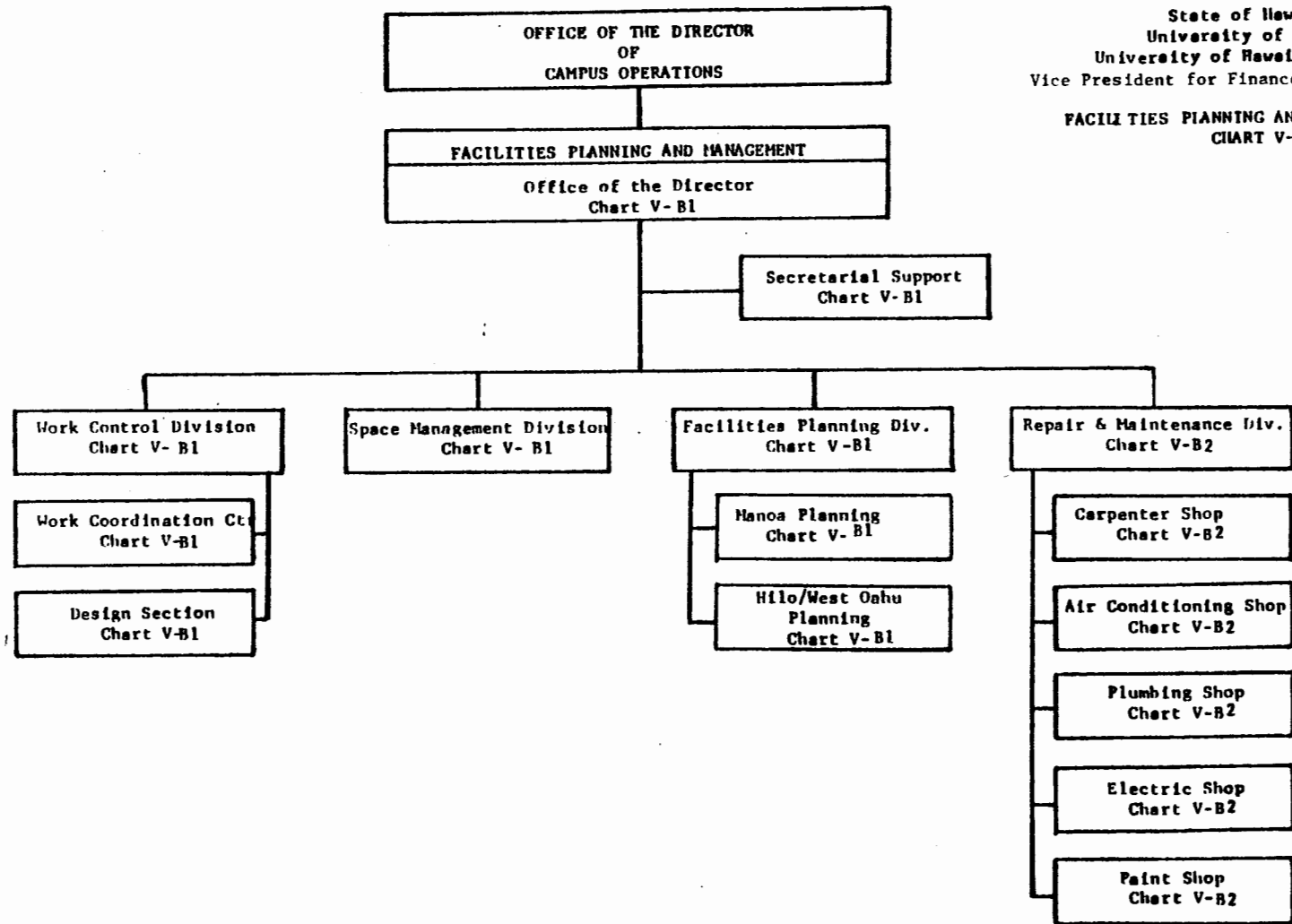
STATE OF HAWAII
UNIVERSITY OF HAWAII
UNIVERSITY OF HAWAII AT MANOA
Vice President for Finance and Operations

CAMPUS OPERATIONS
Chart V-A



- 1 To be reclassified
2 To be reclassified
3 To be reclassified
4 To be reclassified

CHART UPDATED
DATE SEP 1986

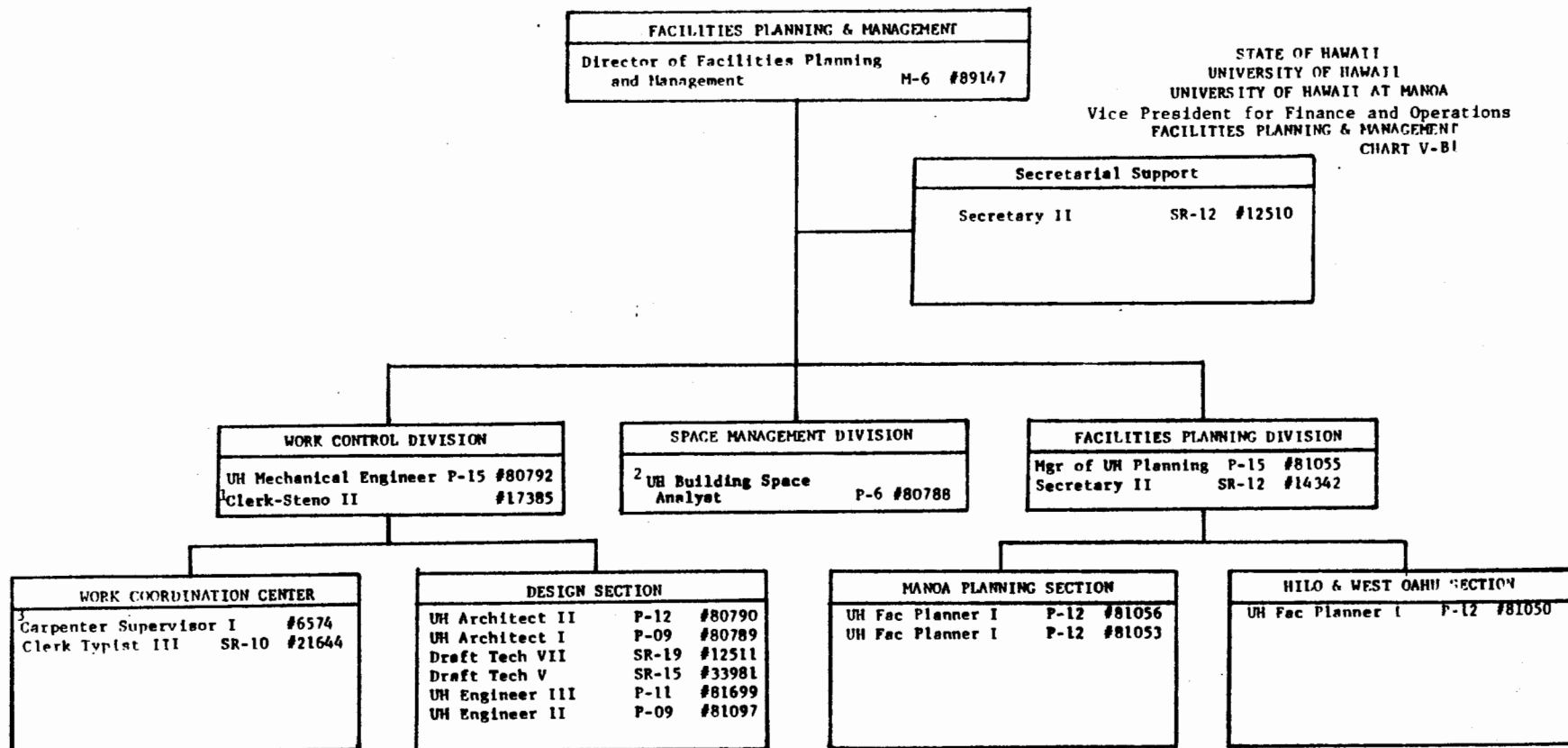


State of Hawaii
University of Hawaii
University of Hawaii - Manoa
Vice President for Finance and Operations

FACILITIES PLANNING AND MANAGEMENT
CHART V-B

CHART UPDATED

DATE SEP 1986



¹To be reclassified

²To be reclassified

³To be reclassified

To be reclassified

CHART V-B1 DATED
DATE SEP 1986

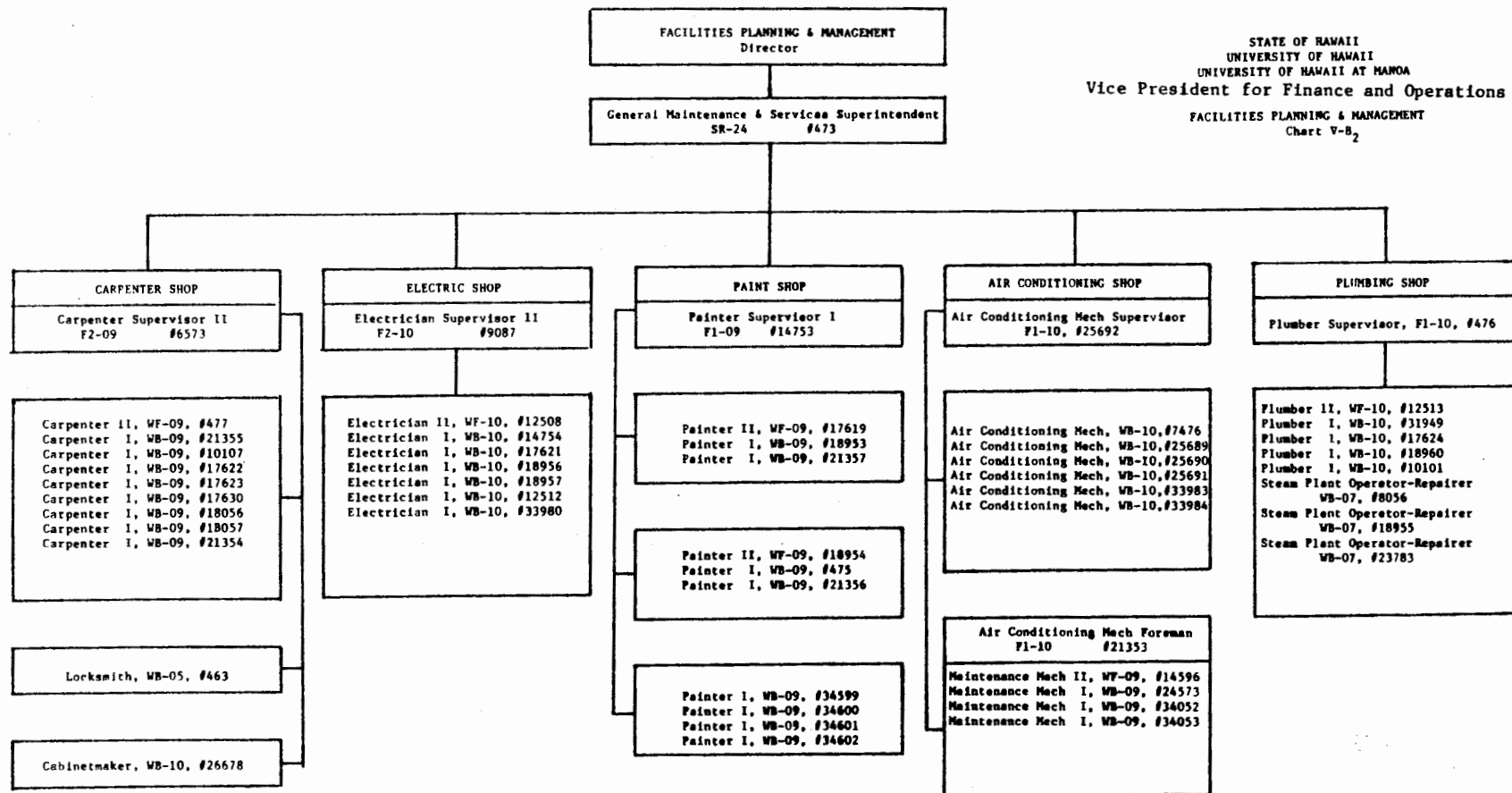


CHART UPDATED

DATE SEP 1986

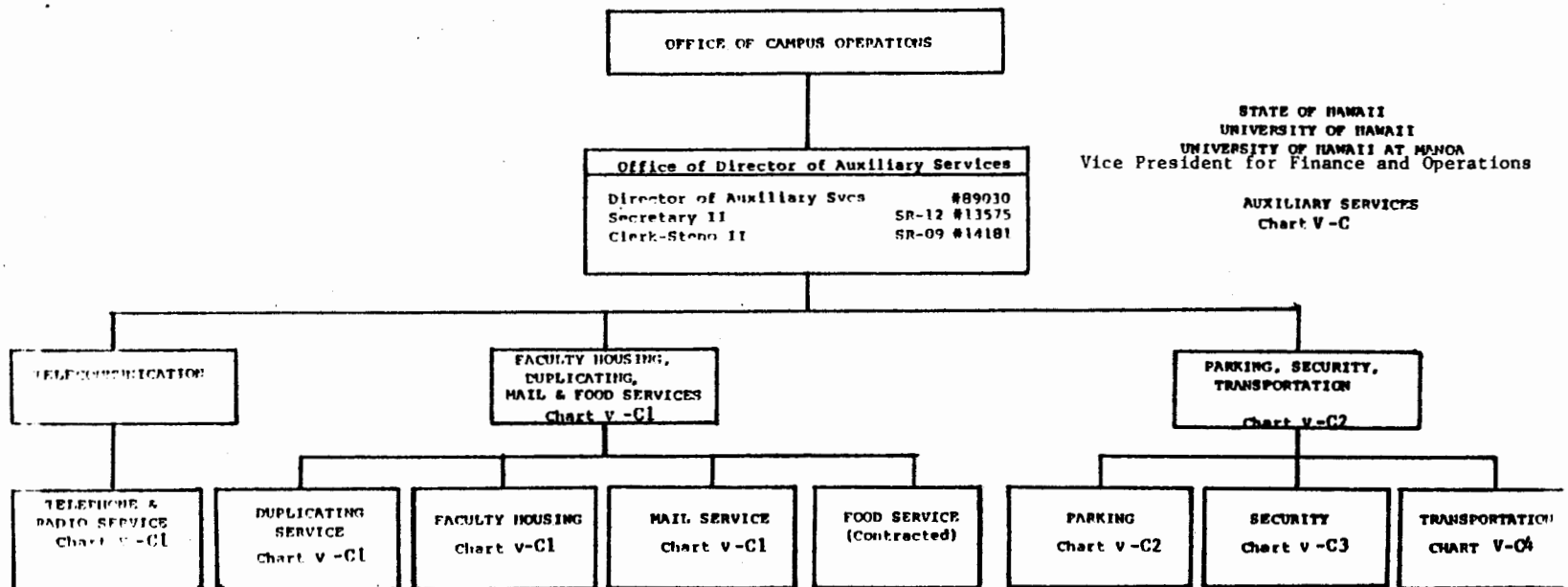
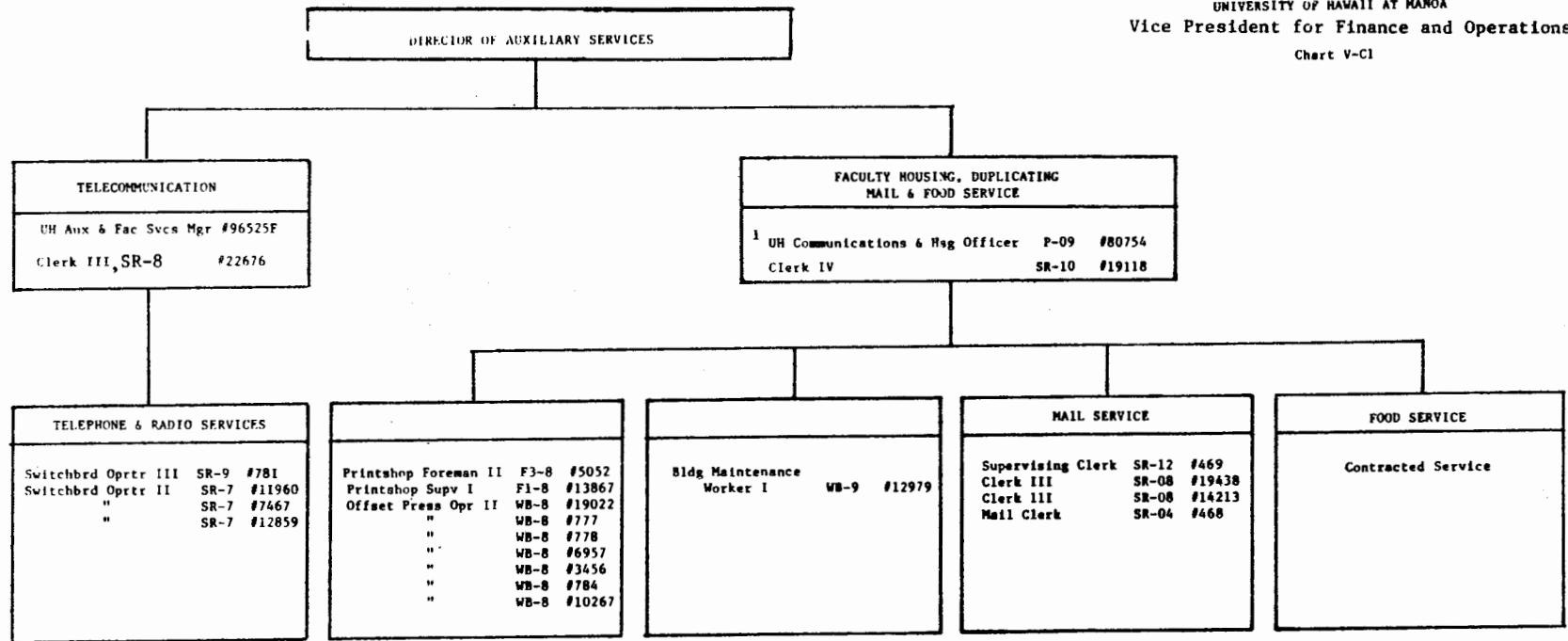


CHART UPDATED

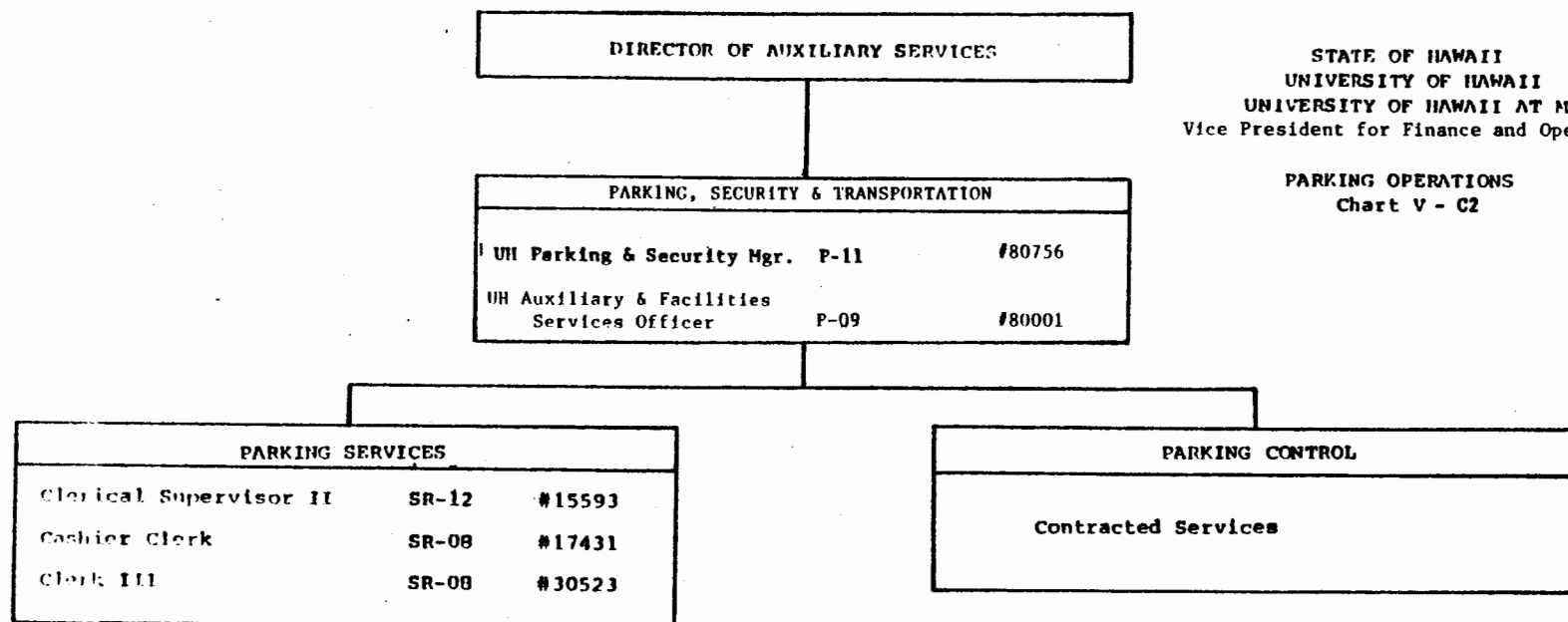
DATE SEP 1986

STATE OF HAWAII
UNIVERSITY OF HAWAII
UNIVERSITY OF HAWAII AT MANOA
Vice President for Finance and Operations
Chart V-C1



¹To be reclassified

CHART UPDATED
SEP 1986
DATE _____



STATE OF HAWAII
UNIVERSITY OF HAWAII
UNIVERSITY OF HAWAII AT MANOA
Vice President for Finance and Operations

PARKING OPERATIONS
Chart V - C2

¹ To be reclassified

DATE SEP 1986

DIRECTOR OF AUXILIARY SERVICES

PARKING, SECURITY & TRANSPORTATION

CAMPUS SECURITY

Captain of Campus Security
UH Auxiliary & Facilities Svcs Officer P-07 #80477

Security Officer III	SR-17	#19559
Security Officer II	SR-15	#13052
"	SR-15	#12149
"	SR-15	#3574
Security Officer I	SR-13	#36668
"	SR-13	#13051
"	SR-13	#24542
"	SR-13	#24574
"	SR-13	#24575
"	SR-13	#24576
"	SR-13	#3575
"	SR-13	#28608
"	SR-13	#28609
"	SR-13	#28610
"	SR-13	#28611
"	SR-13	#29174
"	SR-13	#30526
"	SR-13	#36659
"	SR-13	#36667
"	SR-13	#36660
"	SR-13	#36661
"	SR-13	#36662

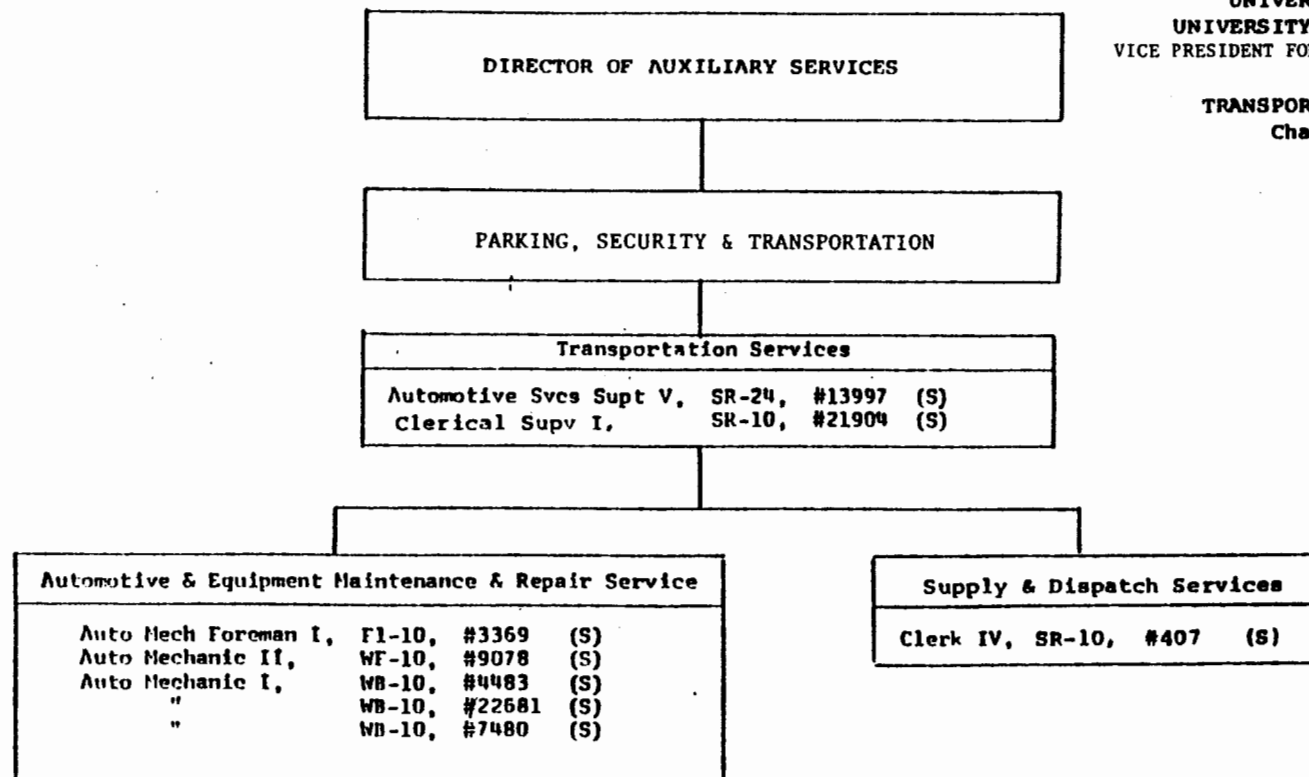
STATE OF HAWAII
UNIVERSITY OF HAWAII
UNIVERSITY OF HAWAII AT MANOA
Vice President for Finance and Operations

CAMPUS SECURITY
Chart V - C3

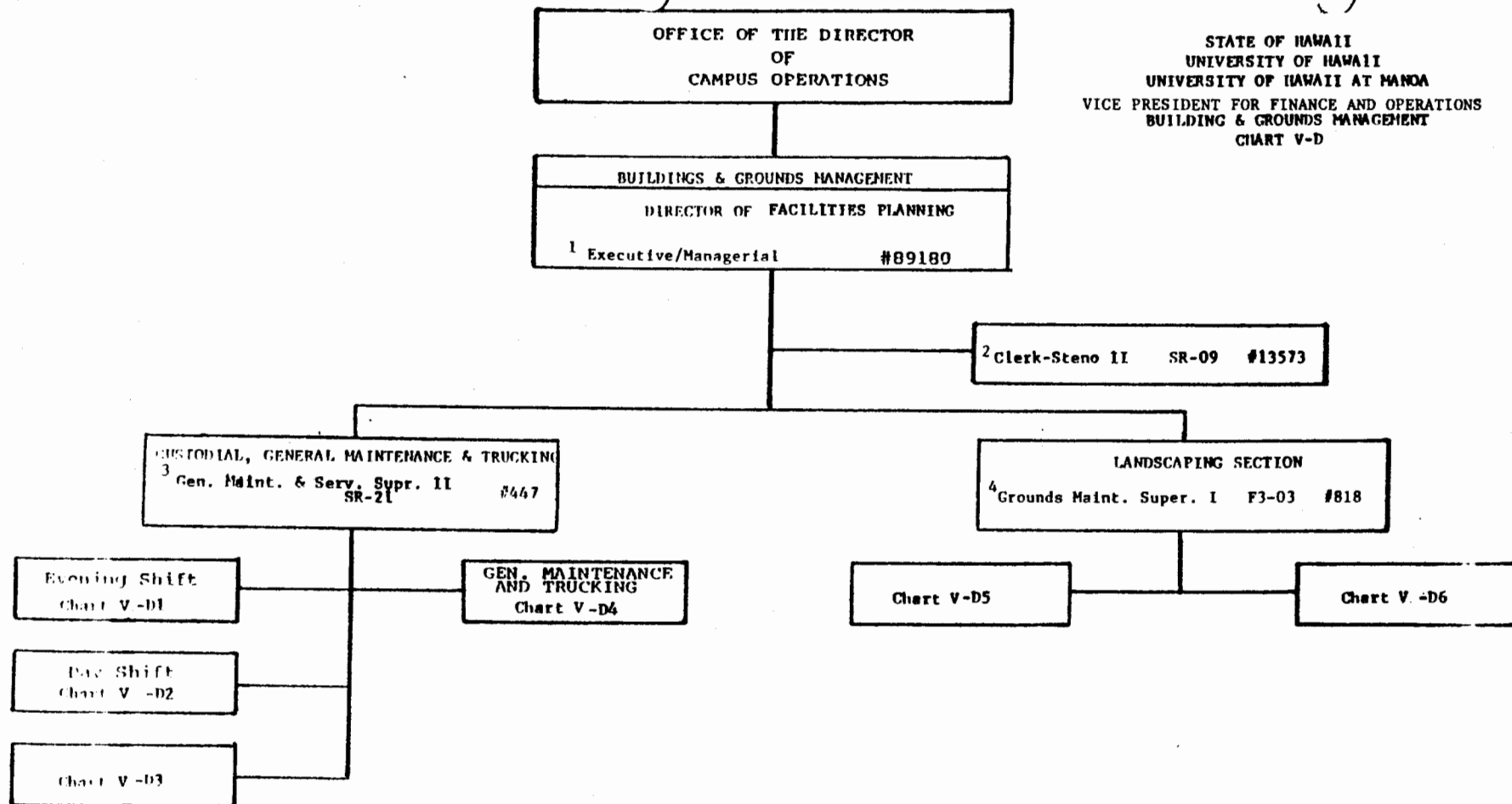
CHART UPDATED
DATE SEP 1986

STATE OF HAWAII
UNIVERSITY OF HAWAII
UNIVERSITY OF HAWAII AT MANOA
VICE PRESIDENT FOR FINANCE AND OPERATIONS

TRANSPORTATION SERVICES
Chart V - C4



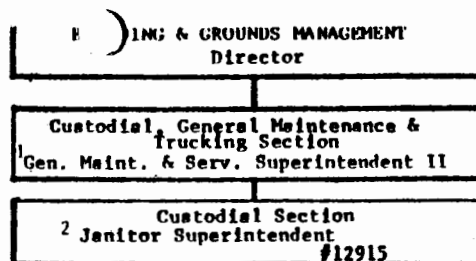
DATE SEP 1986



- 1 To be reclassified
2 To be reclassified
3 To be reclassified
4 To be reclassified

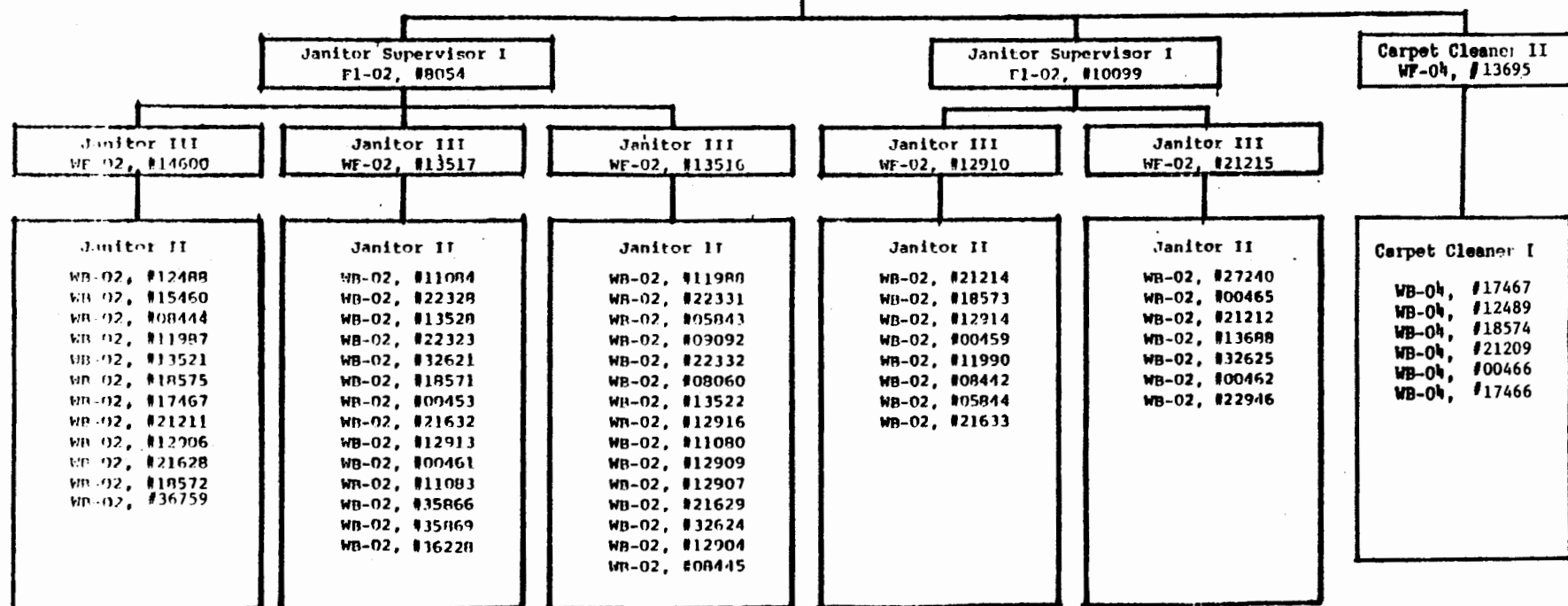
CHART UPDATED
DATE SEP 1986

EVENING SHIFT



STATE OF HAWAII
UNIVERSITY OF HAWAII
UNIVERSITY OF HAWAII AT MANOA
VICE PRESIDENT FOR FINANCE AND OPERATIONS
BUILDING & GROUND MANAGEMENT

CHART V - D1



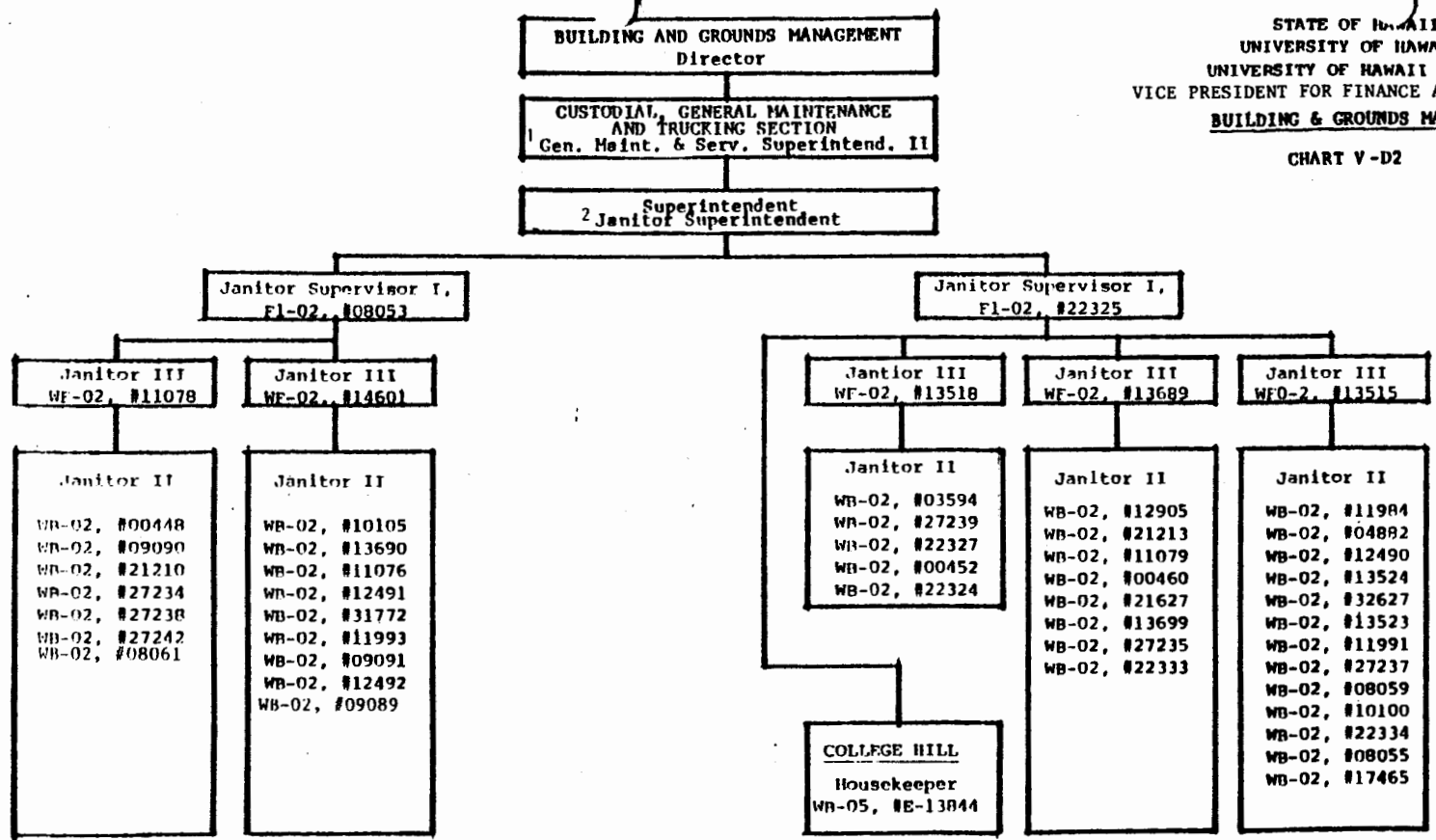
¹ To be reclassified

² To be reclassified

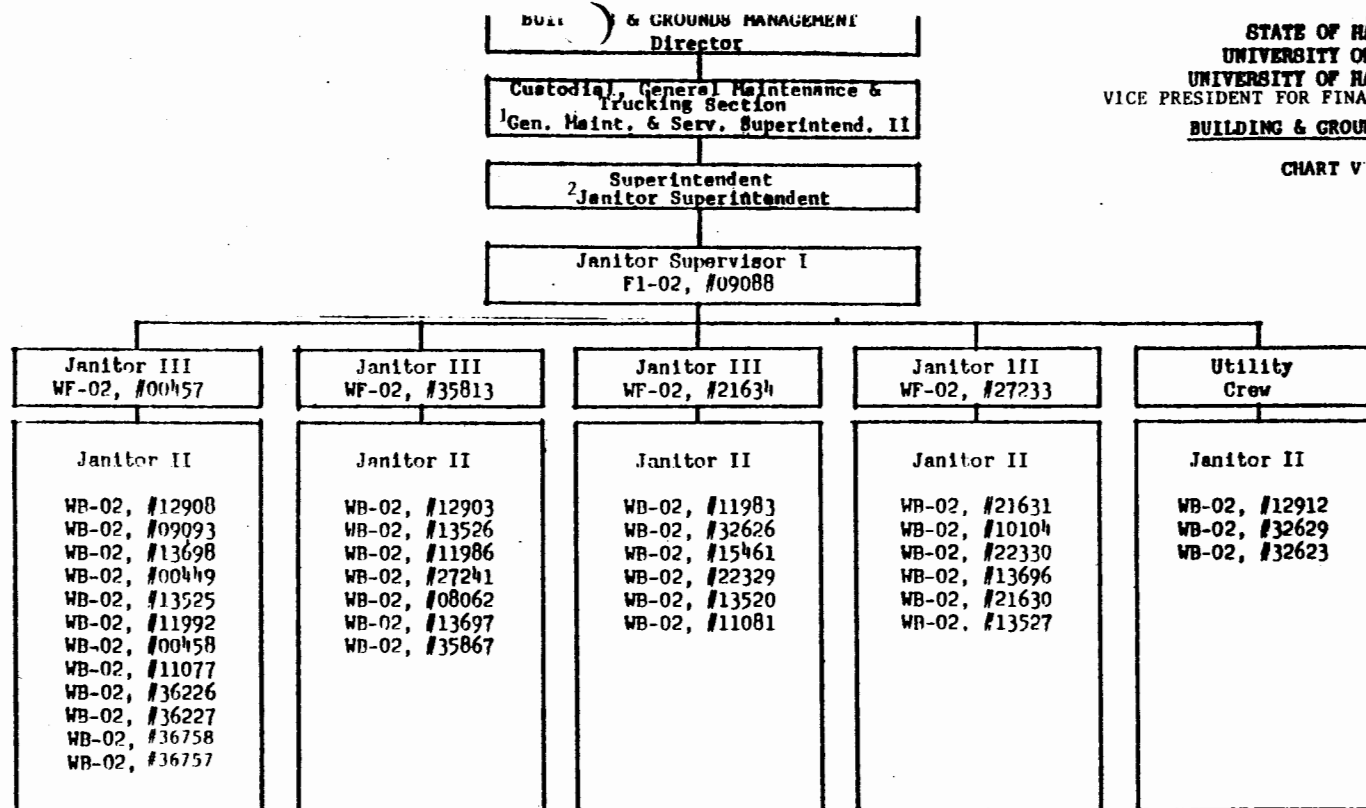
CHART UPDATED

DATE SEP 1986

CHART V-D2



¹ To be reclassified
² To be reclassified



STATE OF HAWAII
UNIVERSITY OF HAWAII
UNIVERSITY OF HAWAII AT MANOA
VICE PRESIDENT FOR FINANCE AND OPERATIONS
BUILDING & GROUNDS MANAGEMENT

CHART V - B3

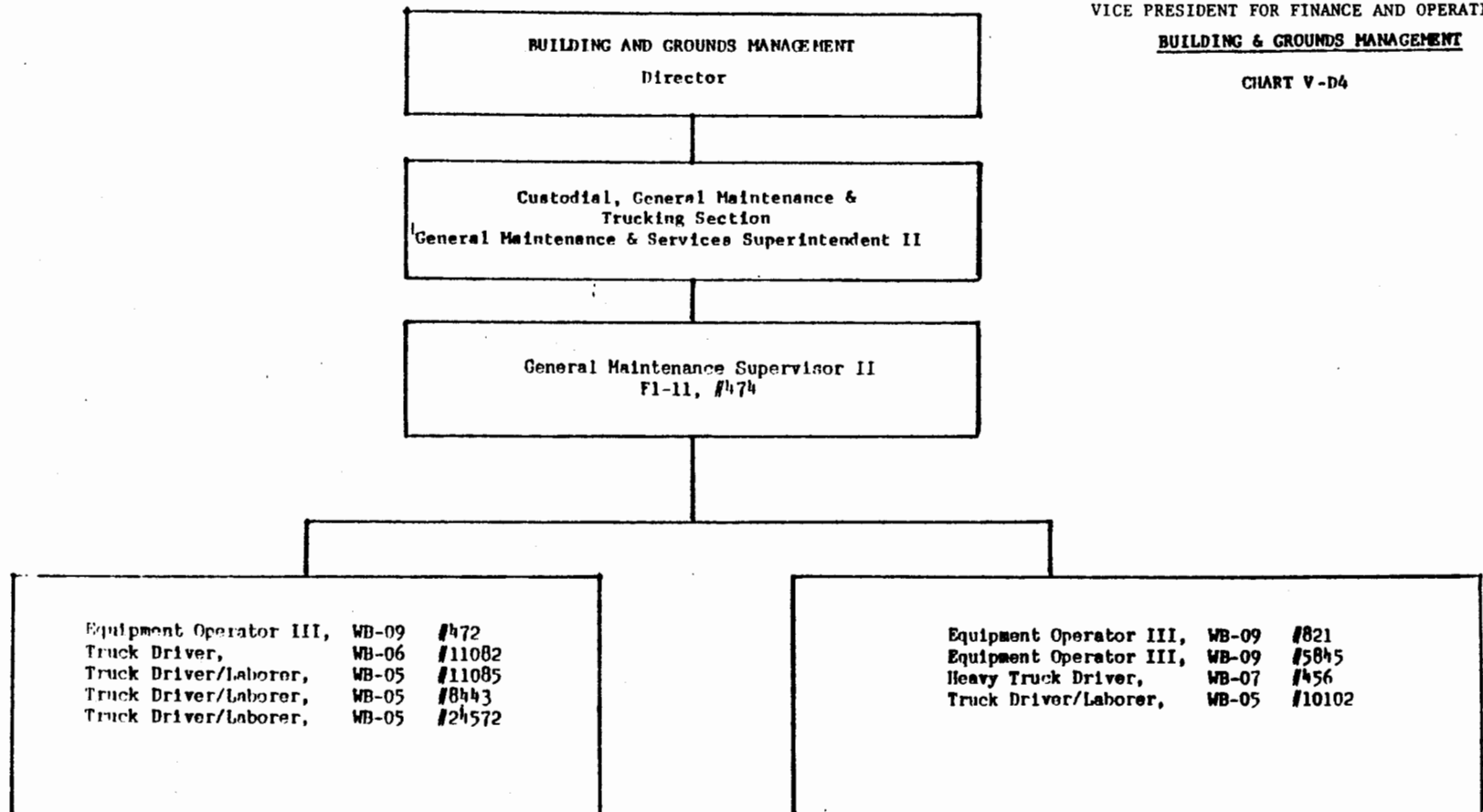
¹ To be reclassified

² To be reclassified

CHART UPDATED
DATE SEP 1986

STATE OF HAWAII
 UNIVERSITY OF HAWAII
 UNIVERSITY OF HAWAII AT MANOA
 VICE PRESIDENT FOR FINANCE AND OPERATIONS
BUILDING & GROUNDS MANAGEMENT

CHART V-D4

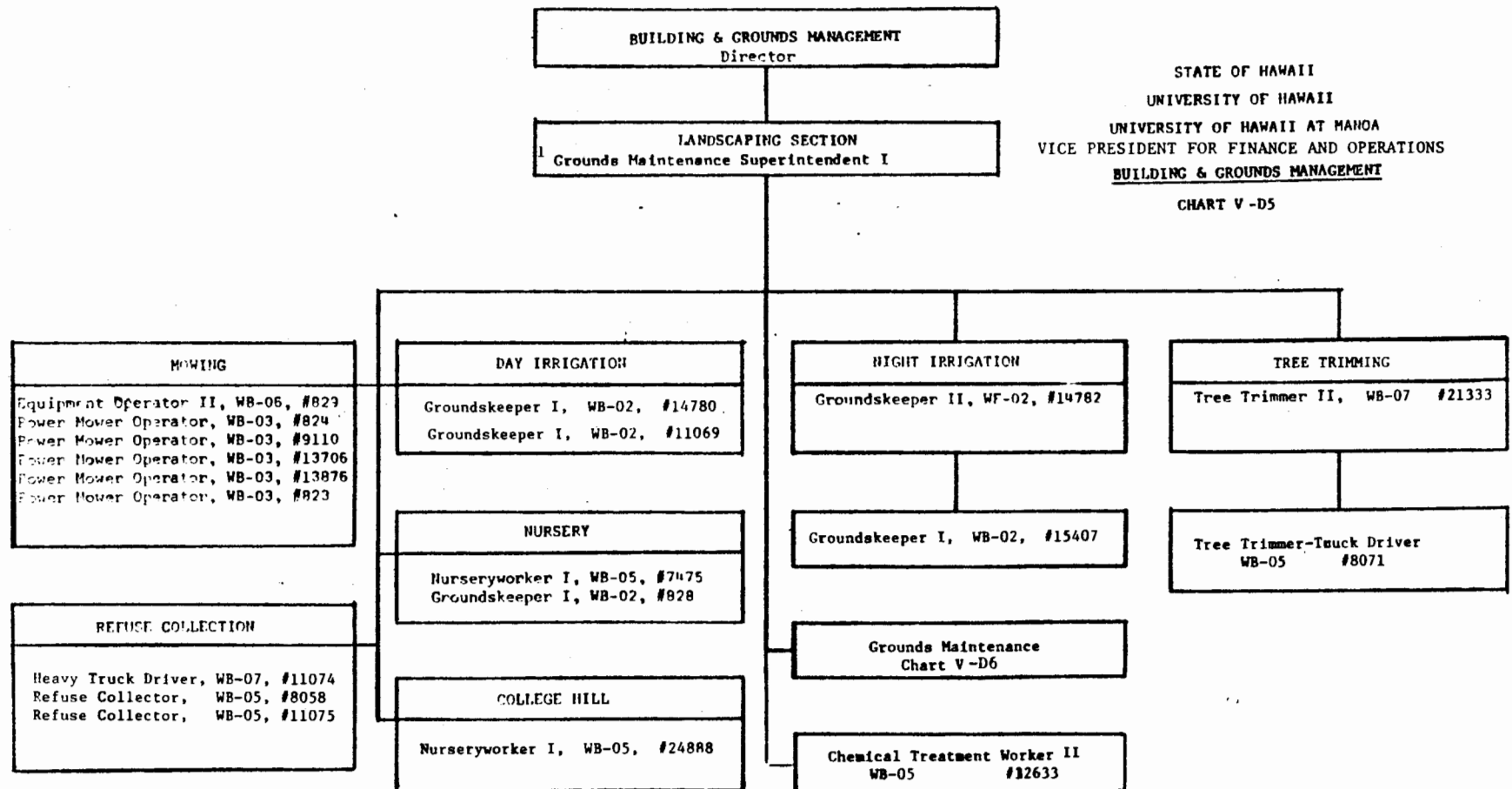


¹ To be reclassified

CHART UPDATED

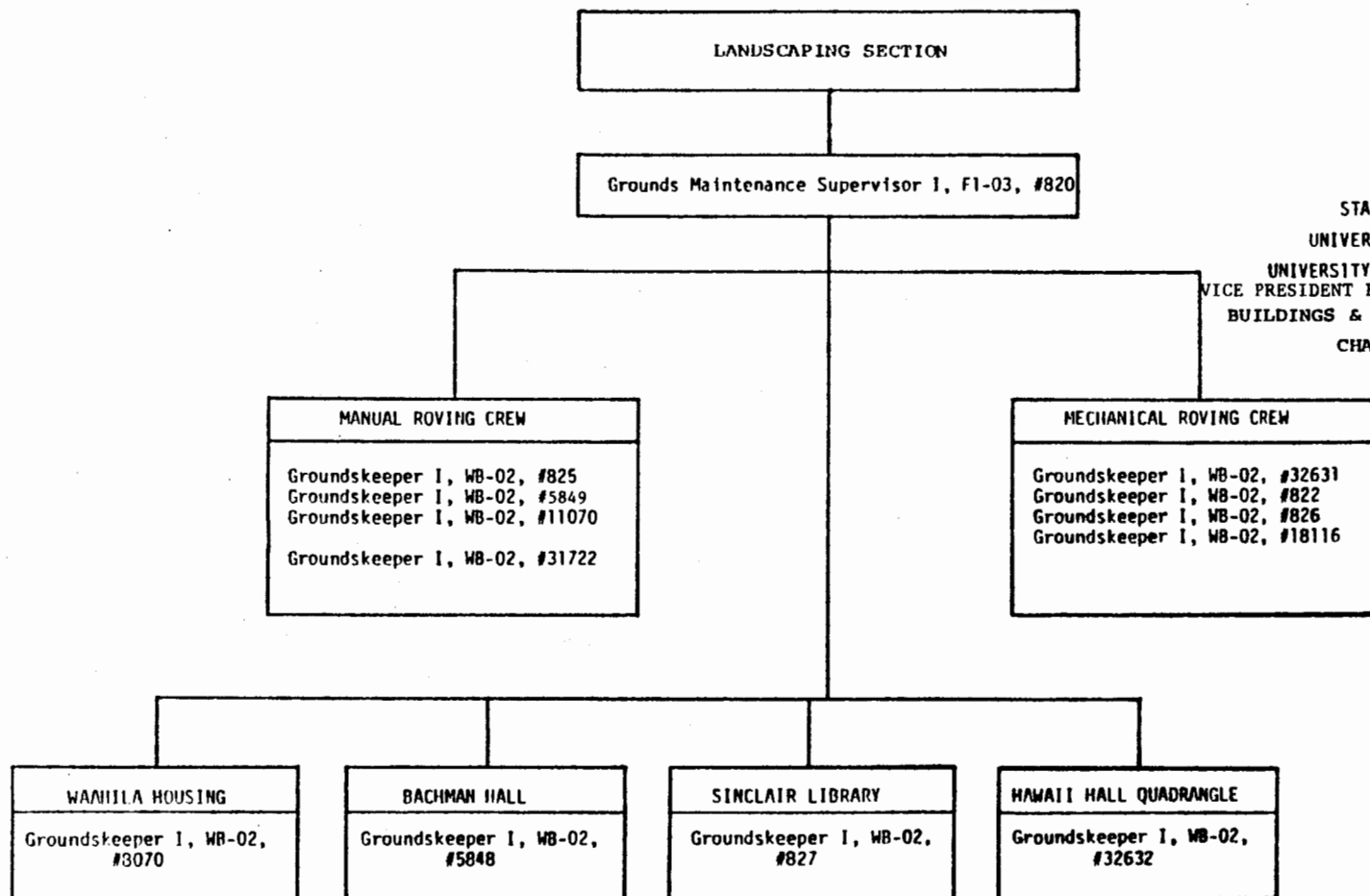
SEP 1986

DATE



¹To be reclassified

CHART UPDATED
SEP 1986
DATE



STATE OF HAWAII
UNIVERSITY OF HAWAII
UNIVERSITY OF HAWAII AT MANOA
VICE PRESIDENT FOR FINANCE & OPERATIONS
BUILDINGS & GROUNDS MANAGEMENT
CHART V-D6

CHART UPDATED
DATE SEP 1986

STATE OF HAWAII
 UNIVERSITY OF HAWAII
 UNIVERSITY OF HAWAII AT HAWAII
 VICE PRESIDENT FOR FINANCE AND OPERATIONS
 OFFICE OF ENVIRONMENTAL HEALTH, SAFETY &
 CIVIL DEFENSE

Chart V-E

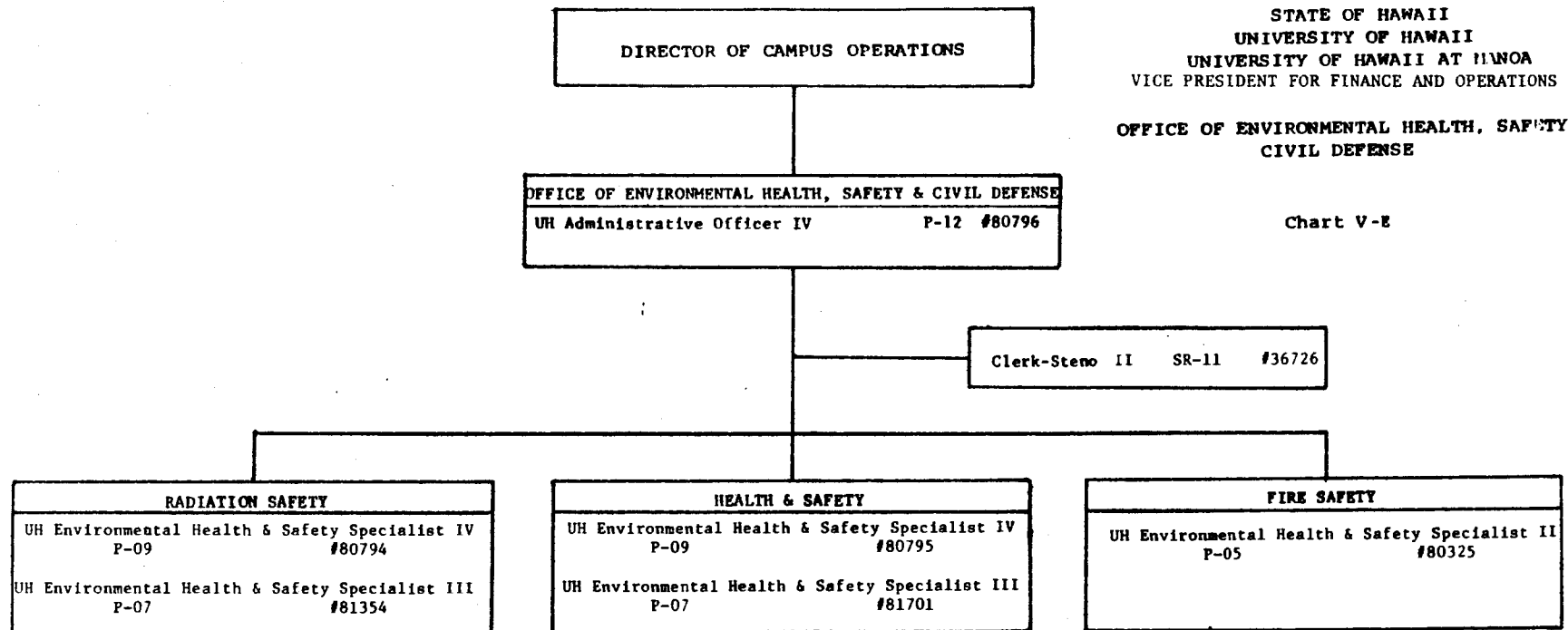
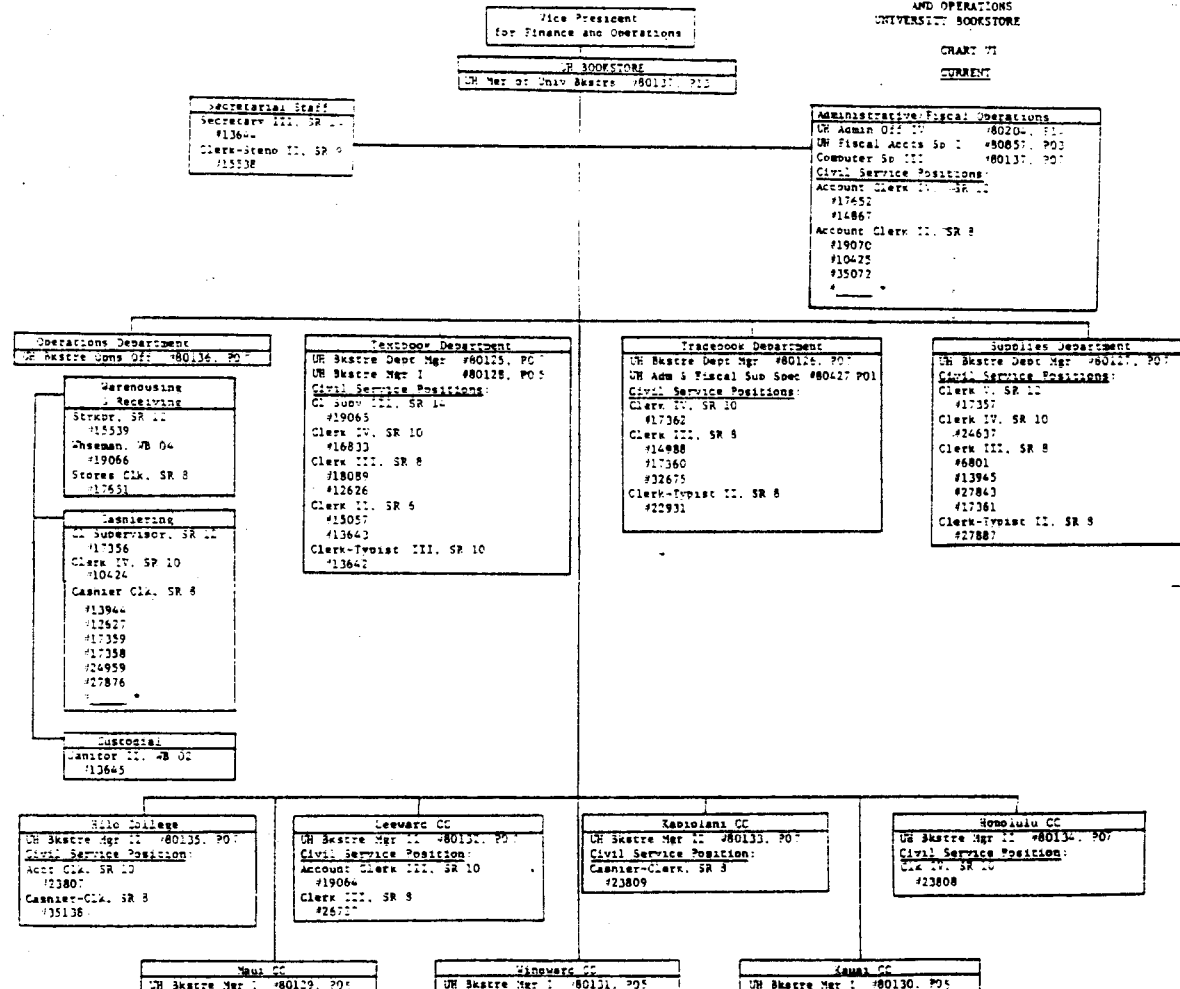


CHART UPDATED
 DATE SEP 1986

CHART 71

CURRENT



* Shaded positions

CHART UPDATED

SEP 1986