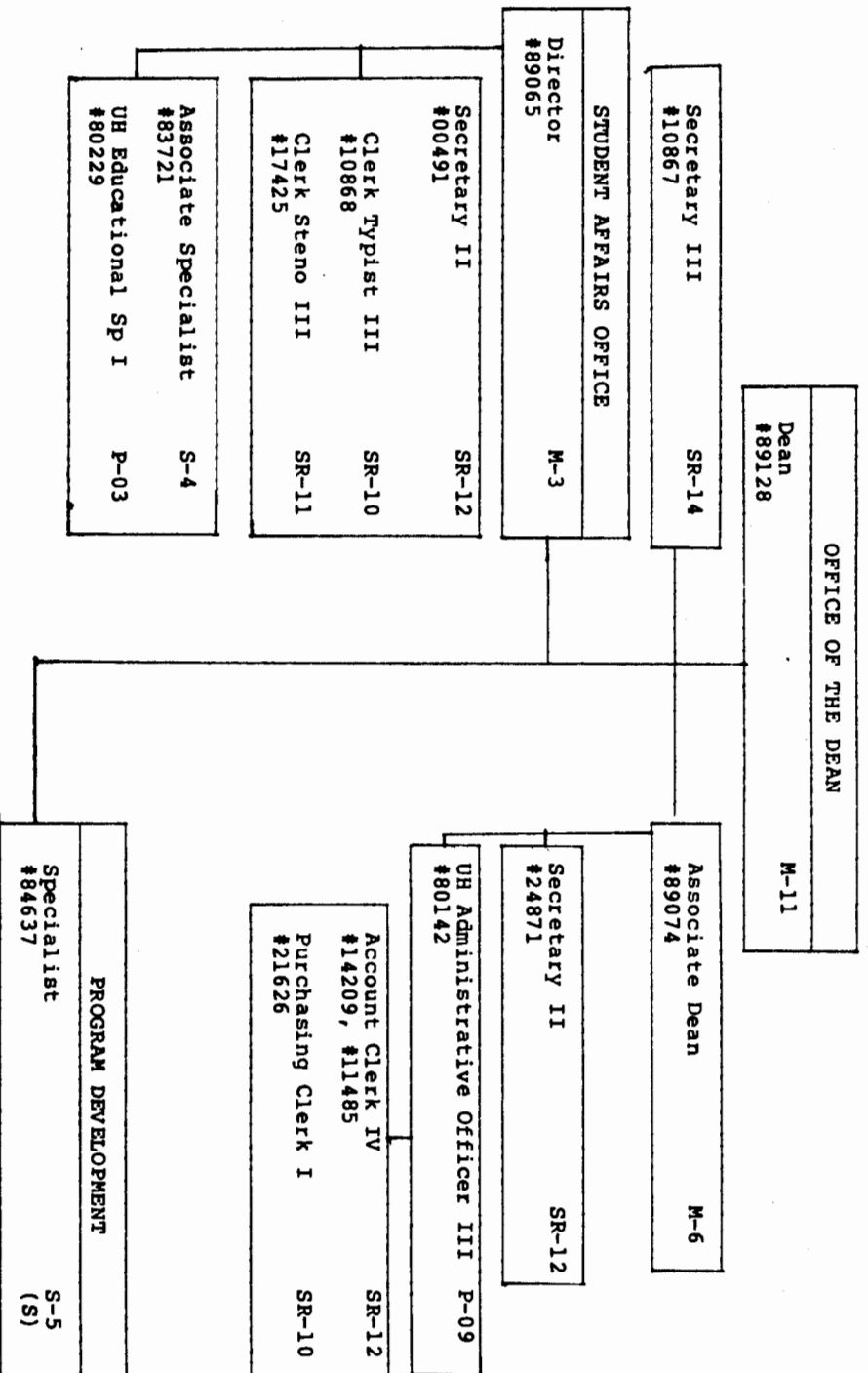


\*Act 202, SLH 1976, Advisory Body to the Dean  
for the Center for Labor Education and Research

**CHART UPDATED**

DATE SEP 1986



**CHART UPDATED**

SEP

1986

DATE

COLLEGE OF CONTINUING EDUCATION  
AND COMMUNITY SERVICE

DIVISION OF COURSES AND CURRICULA  
Extended Programs

Assistant Specialist and Director  
#82784

S-3

Secretary II  
#15140

SR-12

Assoc. Spec.  
#83354

S-4

Clerk Steno II  
#24870, #98047F (S)

SR-9

Asst. Spec.  
#85269 (S), #82483 (S),  
#85430, #85312 (S)

S-3

Clerk Typist III  
#12587

SR-10

CHART UPDATED

DATE 03 1987

CHART UPDATED

DATE \_\_\_\_\_

CHART UPDATED

SEP 1986

DATE \_\_\_\_\_

COLLEGE OF CONTINUING EDUCATION  
AND COMMUNITY SERVICE

DIVISION OF COURSES AND CURRICULA  
Professional and Special Programs

Assistant Dean  
#89097  
M-4  
(S)

Secretary II  
#15062  
SR-12

Clerk Steno II  
#21281  
SR-9  
(S)

UH Publications Sp I  
#81968  
P-03  
(S)

UH Educ Sp II  
#80535  
P-06  
(S)

Assistant Specialist  
#83620, #84073, #85311(S)  
#83731(S)\*, #85310(S)  
S-3

UH Educ Sp II  
P-06  
(S)

UH Educ Sp I  
#80424\*  
P-03  
(S)

CHART UPDATED

CHART UPDATED

DATE SEP 1986

COLLEGE OF CONTINUING EDUCATION  
AND COMMUNITY SERVICE

DIVISION OF COMMUNITY SERVICE

Associate Specialist and Director S-4  
#82714

Secretary II SR-12  
#13854 (S)

Assoc. Spec. S-4  
#82252 (S)

Asst. Spec. S-3  
#82299

Secretary II SR-12  
#15637 (S)

CHART UPDATED

DATE

CHART UPDATED

DATE SEP 1986

COLLEGE OF CONTINUING EDUCATION  
AND COMMUNITY SERVICE

Assistant Dean M-4  
#89097 (S)

SMALL BUSINESS MANAGEMENT PROGRAM

UH Educational Sp III and Director P 09  
#80593 (S)

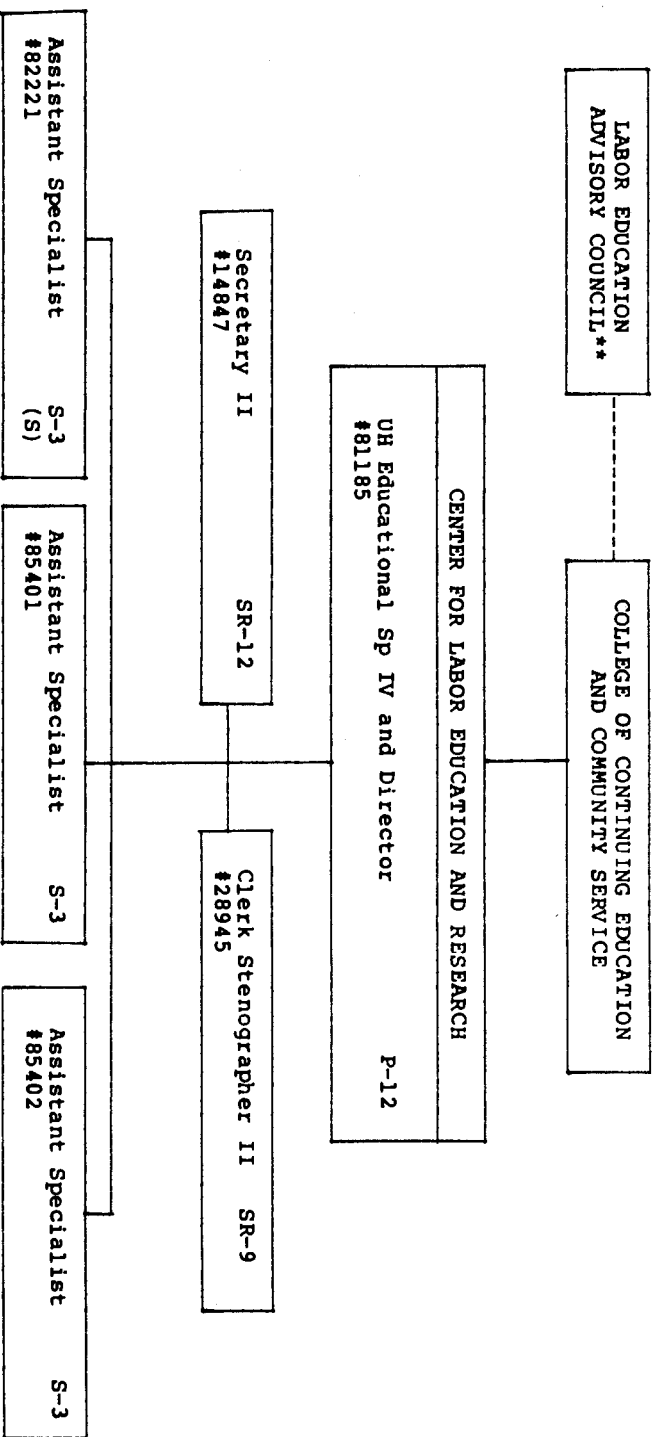
Secretary II SR-12  
#15946

CHART UPDATED

DATE OCT 1987

CHART UPDATED

DATE SEP 1986



\*\*Act 202, SLH 1976, Advisory Body to the Dean of CCECS.

**CHART UPDATED**

DATE 01 MAR

**CHART UPDATED**

DATE SEP 1986