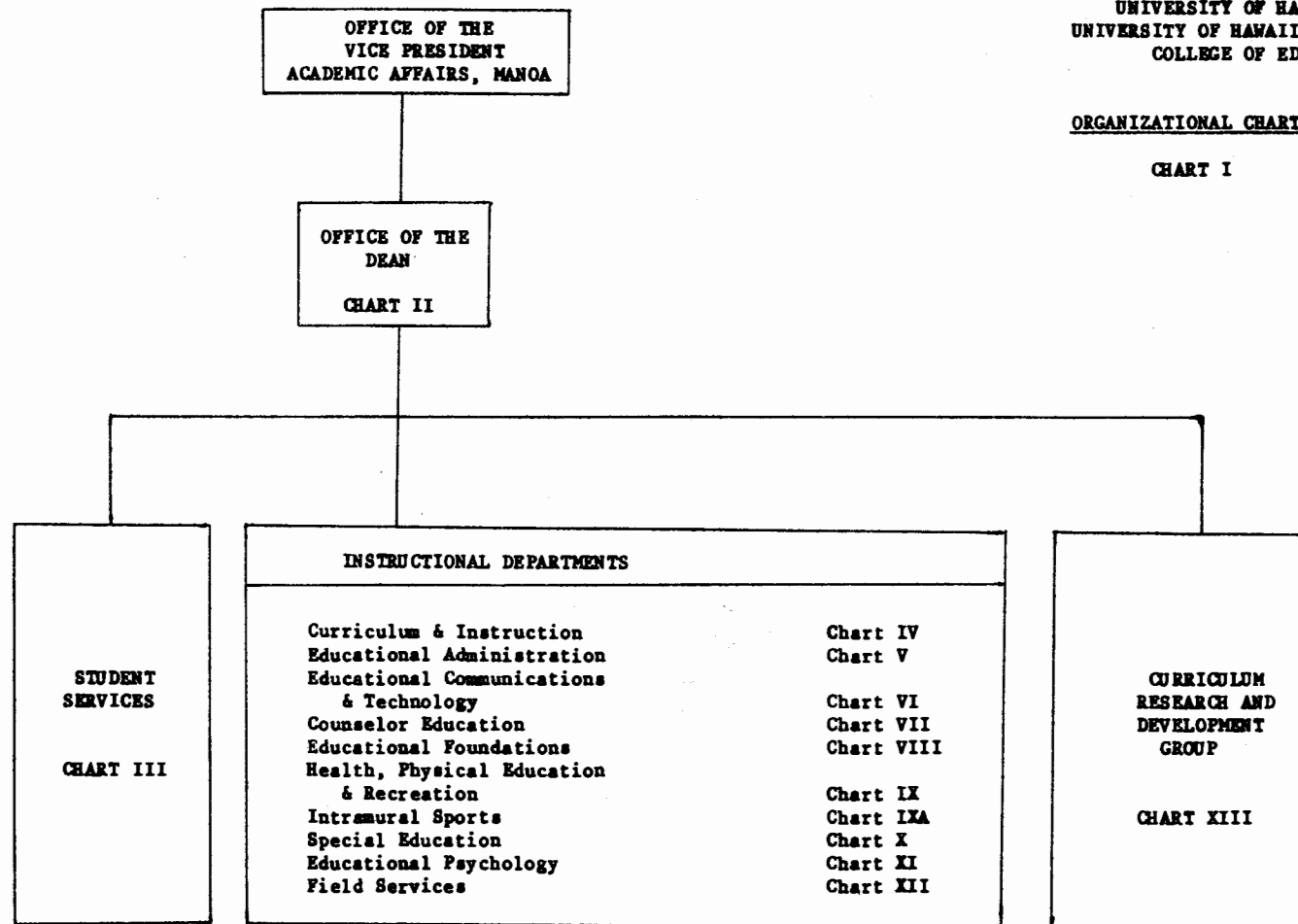


STATE OF HAWAII
UNIVERSITY OF HAWAII
UNIVERSITY OF HAWAII AT MANOA
COLLEGE OF EDUCATION

ORGANIZATIONAL CHART

CHART I



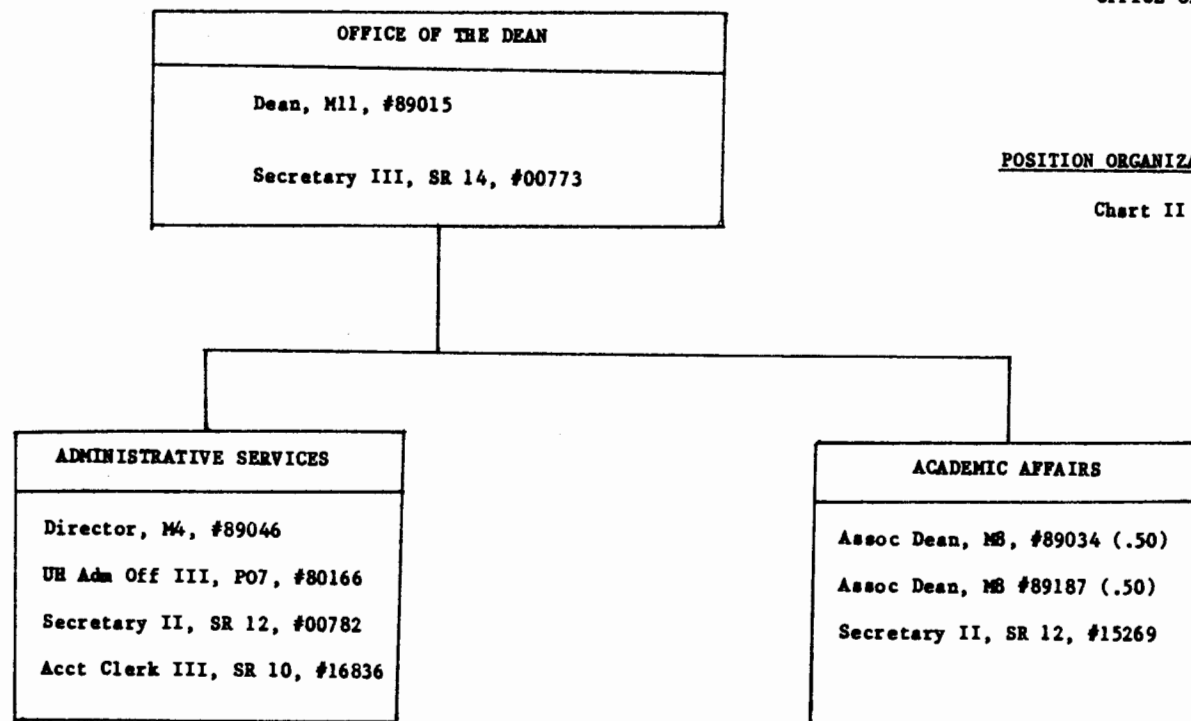
SEP 30 1986

CHART UPDATED
DATE SEP 30 1986

STATE OF HAWAII
UNIVERSITY OF HAWAII AT MANOA
COLLEGE OF EDUCATION
OFFICE OF THE DEAN

POSITION ORGANIZATION CHART

Chart II



SEP 30 1986

CHART UPDATED

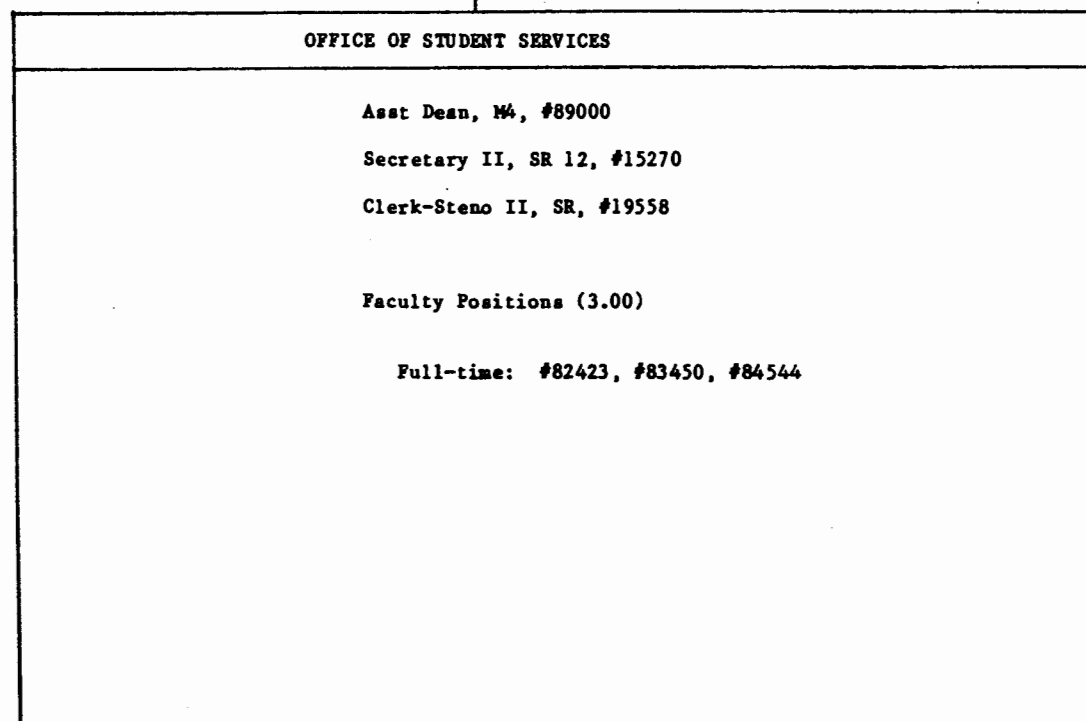
DATE SEP 30 1986

STATE OF HAWAII
UNIVERSITY OF HAWAII AT MANOA
COLLEGE OF EDUCATION
STUDENT SERVICES

OFFICE OF THE
DEAN

Position Organization Chart

Chart III



SEP 30 1986

CHART UPDATED

SEP 30 1986

DATE _____

STATE OF HAWAII
UNIVERSITY OF HAWAII AT MANOA
COLLEGE OF EDUCATION
CURRICULUM & INSTRUCTION

OFFICE OF THE
DEAN

POSITION ORGANIZATION CHART

Chart IV

DEPARTMENT OF CURRICULUM AND INSTRUCTION

Chairman (Appointed from Instructional Positions)

Secretary II, SR 12, #00785

Clerk-Steno III, SR 11, #12844

Clerk-Steno II, SR 9, #15121 (.50)

UH Adm & Fiscal Support Sp, PO1, #80390S*

Instructional Positions (25.00)

Full-time: #82250, #82043, #82093, #82144, #84090
#82288, #82300, #82347, #82632, #82711
#84529, #83084, #83335, #83922, #83923
#83954, #83672, #83995, #84407, #84527
#84670, #84680, #82235

Part-time: #83872 (.50), #88646 (.50), #85646 (.50),
#88298 (.50)

SEP 30 1986

CHART UPDATED

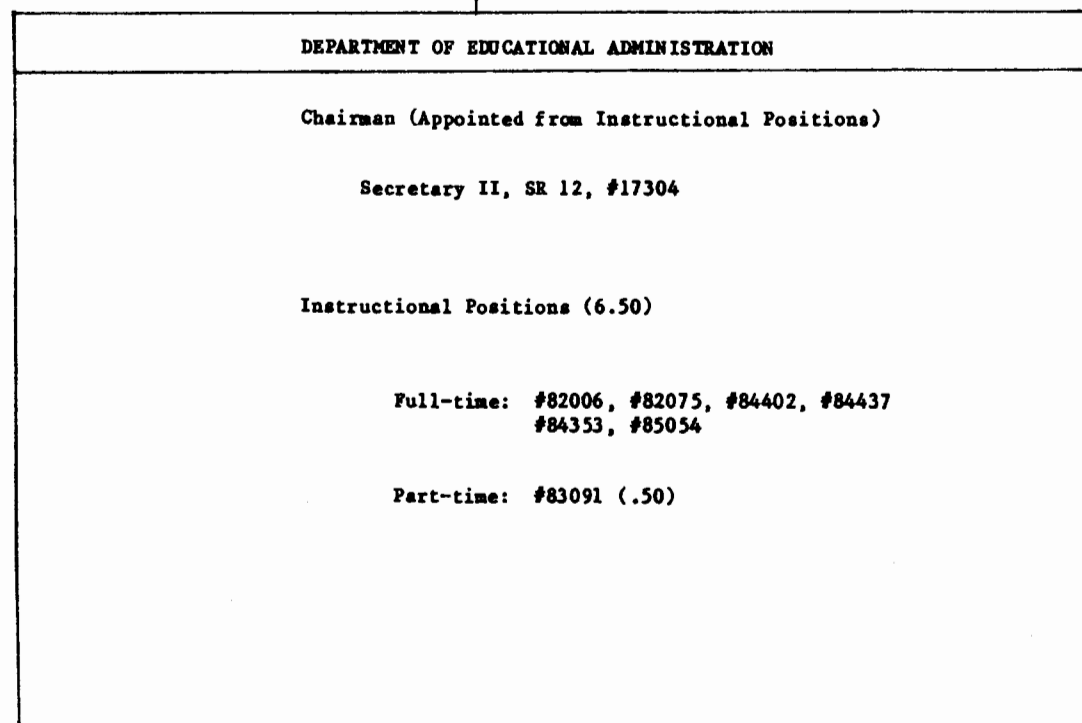
DATE SEP 30 1986

STATE OF HAWAII
UNIVERSITY OF HAWAII AT MANOA
COLLEGE OF EDUCATION
EDUCATIONAL ADMINISTRATION

OFFICE OF THE
DEAN

POSITION ORGANIZATION CHART

Chart V



SEP 30 1986

CHART UPDATED

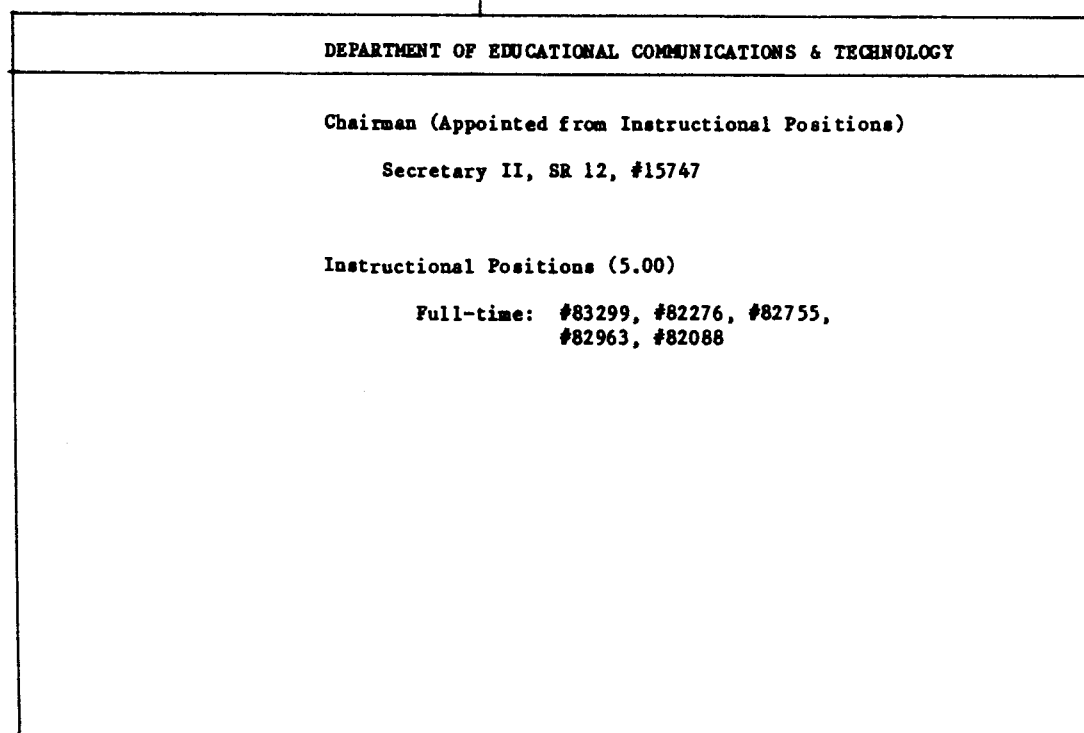
DATE SEP 30 1986

STATE OF HAWAII
UNIVERSITY OF HAWAII AT MANOA
COLLEGE OF EDUCATION
EDUCATIONAL COMMUNICATIONS
& TECHNOLOGY

OFFICE OF THE
DEAN

Position Organization Chart

Chart VI



SEP 30 1986

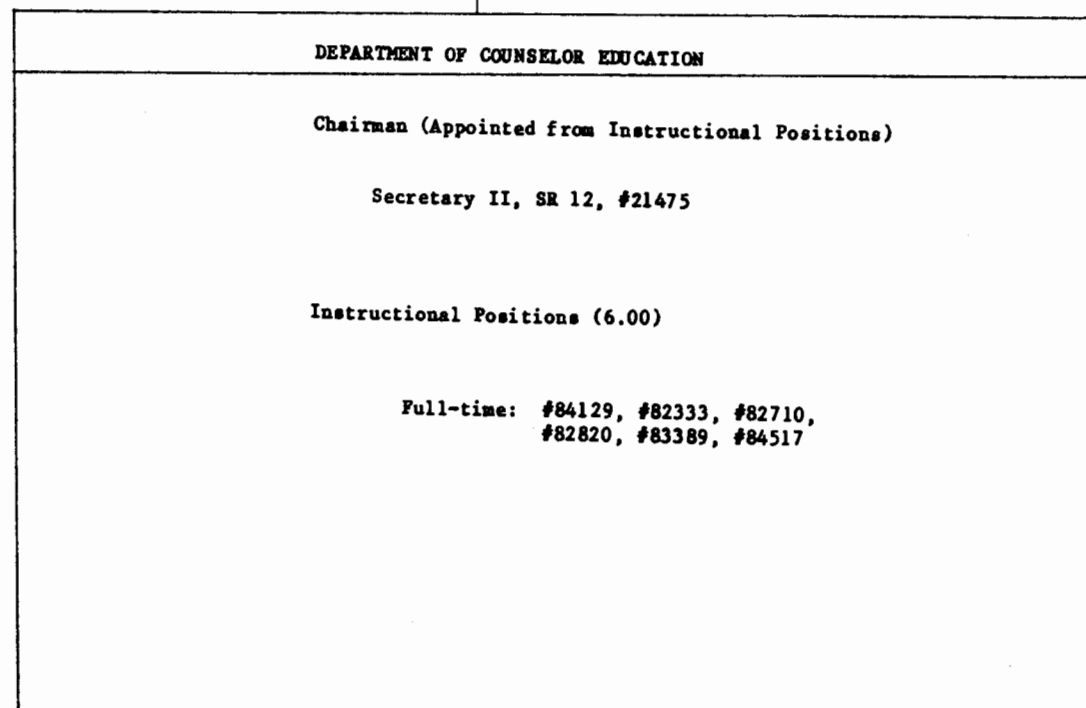
CHART UPDATED
DATE SEP 30 1986

STATE OF HAWAII
UNIVERSITY OF HAWAII AT MANOA
COLLEGE OF EDUCATION
COUNSELOR EDUCATION

OFFICE OF THE
DEAN

POSITION ORGANIZATION CHART

Chart VII



SEP 30 1986

CHART UPDATED

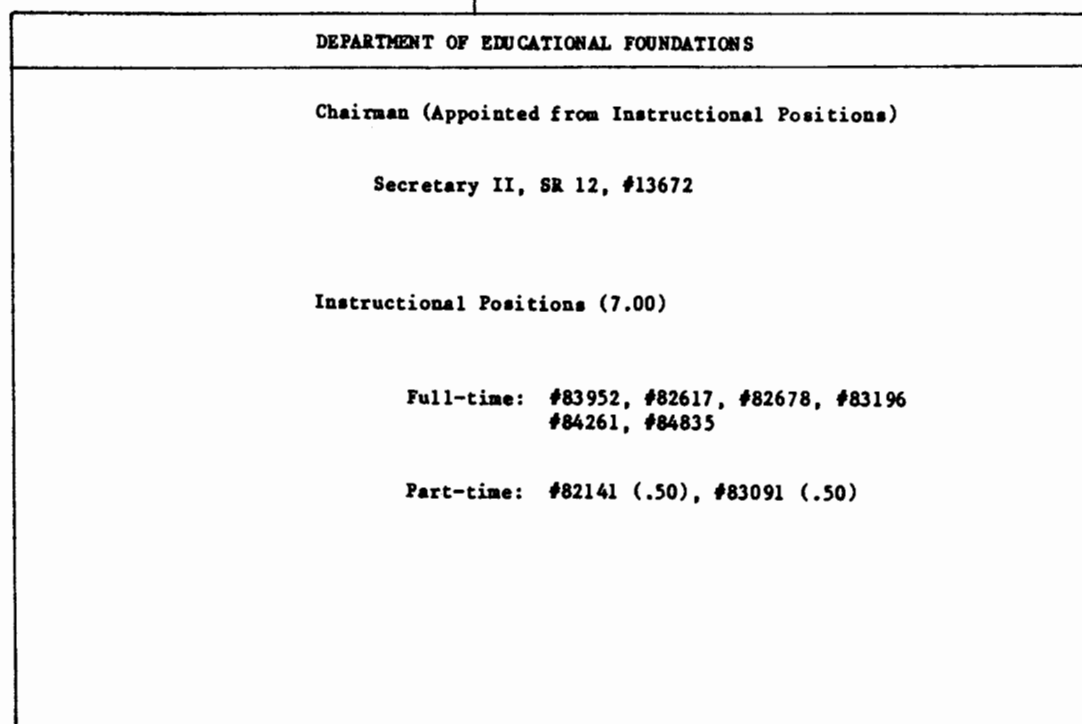
DATE SEP 30 1986

STATE OF HAWAII
UNIVERSITY OF HAWAII AT MANOA
COLLEGE OF EDUCATION
EDUCATIONAL FOUNDATIONS

OFFICE OF THE
DEAN

POSITION ORGANIZATION CHART

Chart VIII



SEP 30 1986

CHART UPDATED
SEP 30 1986

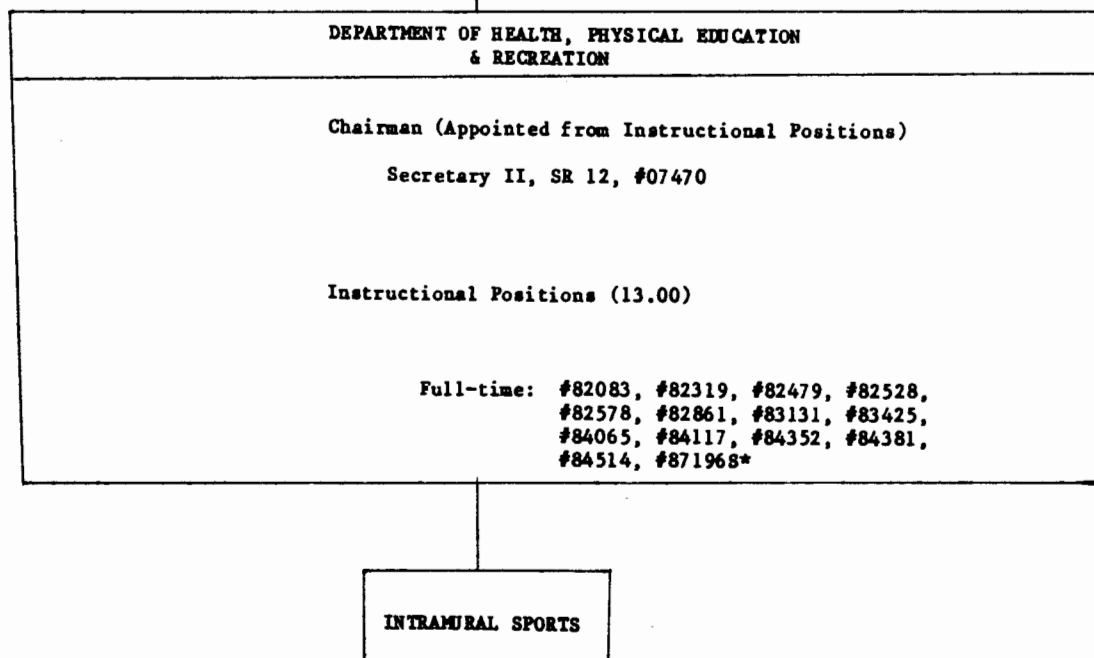
DATE _____

STATE OF HAWAII
UNIVERSITY OF HAWAII AT MANOA
COLLEGE OF EDUCATION
HEALTH, PHYSICAL EDUCATION,
& RECREATION

OFFICE OF THE
DEAN

POSITION ORGANIZATION CHART

Chart IX



SEP 30 1986

CHART UPDATED
DATE SEP 30 1986

STATE OF HAWAII
UNIVERSITY OF HAWAII AT MANOA
COLLEGE OF EDUCATION
INTRAMURAL SPORTS

OFFICE OF THE
DEAN

POSITION ORGANIZATION CHART

Chart IXA

DEPARTMENT OF HEALTH, PHYSICAL
EDUCATION & RECREATION

INTRAMURAL SPORTS

Director (Appointed from Specialist Positions)

Clerk-Steno II, SR 9, #26460

Locker Room Attendant, WB02, #00464, #00504, #03940

Specialists Positions (3.00)

Full-time: #83512, #83788, #85083

SEP 30 1986

CHART UPDATED

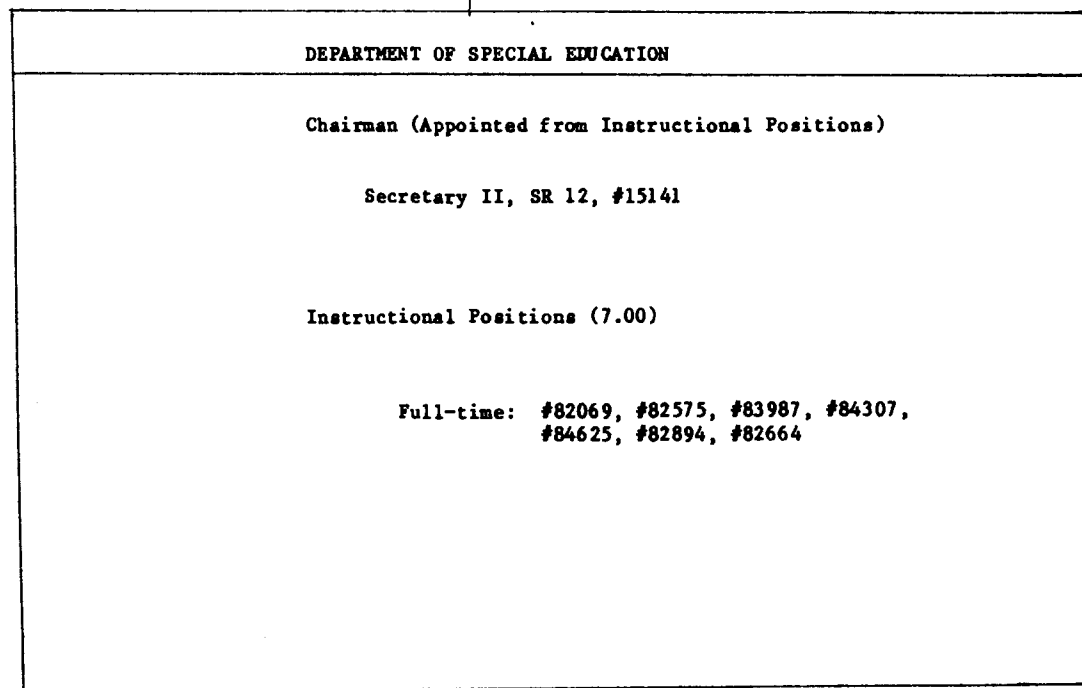
DATE SEP 30 1986

STATE OF HAWAII
UNIVERSITY OF HAWAII AT MANOA
COLLEGE OF EDUCATION
SPECIAL EDUCATION

OFFICE OF THE
DEAN

POSITION ORGANIZATION CHART

Chart X



SEP 30 1986

CHART UPDATED
DATE SEP 30 1986

STATE OF HAWAII
UNIVERSITY OF HAWAII AT MANOA
COLLEGE OF EDUCATION
EDUCATIONAL PSYCHOLOGY

OFFICE OF THE
DEAN

Position Organization Chart

Chart XI

DEPARTMENT OF EDUCATIONAL PSYCHOLOGY

Chairman (Appointed from Instructional Positions)

Secretary II, SR 12, #11895

Instructional Positions (6.75)

Full-time: #82571, #82095, #82015,
#82193, #84004, #84141

Part-time: #84319 (.25), #88180 (.50)
#87573S*

SEP 30 1986

CHART UPDATED

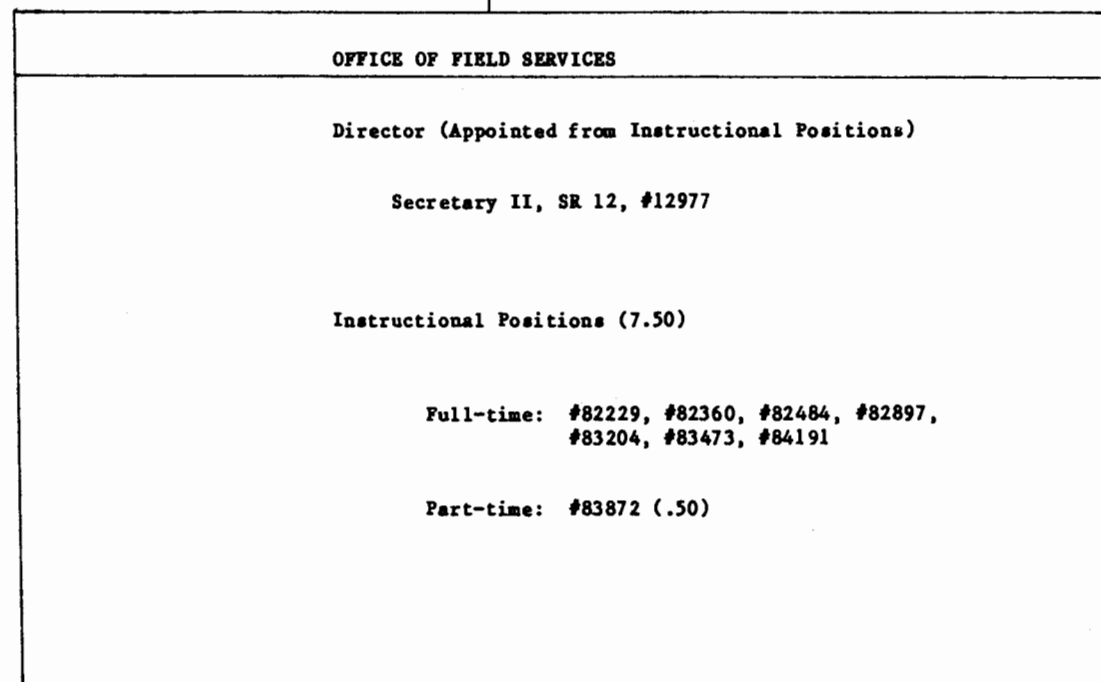
DATE SEP 30 1986

STATE OF HAWAII
UNIVERSITY OF HAWAII AT MANOA
COLLEGE OF EDUCATION
FIELD SERVICES

OFFICE OF THE
DEAN

POSITION ORGANIZATION CHART

Chart XII



SEP 30 1986

CHART UPDATED
SEP 30 1986
DATE _____

OFFICE
OF THE
DEAN

STATE OF HAWAII
UNIVERSITY OF HAWAII AT MANOA
COLLEGE OF EDUCATION
CURRICULUM RESEARCH
AND DEVELOPMENT GROUP

CURRICULUM RESEARCH AND DEVELOPMENT GROUP

Director, M7, #89043
UH Educational Assoc V, P11, #81169
Secretary II, SR 12, #05270
UH Admin Officer IV, P09, #80167
Clerk-Steno II, SR 9, #03480

Organization Chart

Chart XIII

UNIVERSITY LABORATORY SCHOOL

Chart XIII A

RESEARCH AND DEVELOPMENT

Chart XIII B

LABORATORY SCHOOL CAFETERIA

Full-time: Sch Food Svc Mgr III, F2, #04945
Cook I, WB5, #05092
Cafe Helper, WB2, #08095
Part-time: Cafe Helper, WB2, #13934 (.50)

SEP 1986

CHART UPDATED

DATE SEP 1986

OFFICE
OF THE
DEAN

CURRICULUM RESEARCH AND
DEVELOPMENT GROUP
Director

STATE OF HAWAII
UNIVERSITY OF HAWAII AT MANOA
COLLEGE OF EDUCATION
CURRICULUM RESEARCH
AND DEVELOPMENT GROUP
UNIVERSITY LABORATORY SCHOOL
Position Organization Chart
Chart XIII A

UNIVERSITY LABORATORY SCHOOL

Principal (Appointed from Instructional Positions)

Secretary II, SR 12, #00783
Clerk Steno II, SR 09, #36690

Instructional Positions (3.20)

Part-time: Prof, #83287 (.40), #84608 (.35), #84077 (.10)
Assoc Prof, #82154 (.20), #83227 (.05)
Asst Prof, #84377 (.30), #82160 (.55), #82793 (.20), #83380 (.85)
Researcher, #82950 (.20)

Administrative, Professional, Technical Positions (11.90)

Full-time: UH Ed Assoc III, P07, #80433

Part-time: UH Ed Assoc VI, P13, #80476 (.05), #80470 (.20)
UH Ed Assoc V, P11, #80435 (.15), #80468 (.15), #80443 (.50), #80482 (.10)
UH Ed Assoc IV, P09, #80484 (.90), #80480 (.90), #80481 (.25), #80474 (.30), #80465 (.50), #80993 (.80),
#80466 (.40), #80463 (.80), #80472 (.30)
UH Ed Assoc III, P07, #80418 (.15), #80420 (.25), #80917 (.15), #81186 (.10), #80494 (.25), #81170 (.75),
#80434 (.65)
UH Ed Assoc II, P05, #80483 (.25), #80485 (.50), #80429S* (.25)
UH Ed Assoc I, P03, #80464 (.80), #81811 (.25)
UH Pub Spec II, P05, #80109 (.25)

CHART UPDATED
DATE SEP 1986

OFFICE
OF THE
DEAN

CURRICULUM RESEARCH AND
DEVELOPMENT GROUP

Director

STATE OF HAWAII
UNIVERSITY OF HAWAII AT MANOA
COLLEGE OF EDUCATION
CURRICULUM RESEARCH
AND DEVELOPMENT GROUP

RESEARCH AND DEVELOPMENT

Position Organization Chart

Chart XIII B

RESEARCH AND DEVELOPMENT

Instructional Positions (12.30)

Full-time: Prof, #84031, #83951, #82272
Asst Prof, #82387M

Part-time: Prof, #84077 (.90), #83287 (.60), #84608 (.65), #82141M (.50), #83997* (.50)
Assoc Prof, #83227 (.95), #82154 (.80), #85186S* (.50)
Asst Prof, #82793 (.80), #84377 (.70), #83380 (.15), #82160 (.45)
Researcher, #82950 (.80)

Administrative, Professional, Technical Positions (19.85)

Full-time: UH Ed Assoc VI, P13, #80486, #80495
UH Ed Assoc V, P11, #80440
UH Ed Assoc III, P07, #80491, #80228

Part-time: UH Ed Assoc VI, P13, #80476 (.95), #80470 (.80)
UH Ed Assoc V, P11, #80435 (.85), #80468 (.85), #80443 (.50), #80482 (.90)
UH Ed Assoc IV, P09, #80484 (.10), #80480 (.10), #80481 (.75), #80474 (.70), #80465 (.50), #80993 (.20),
#80466 (.60), #80463 (.20), #80472 (.70)
UH Ed Assoc III, P07, #80418 (.85), #80420 (.75), #80917 (.85), #81186 (.40), #80494 (.75), #80434 (.10)
UH Ed Assoc II, P05, #80483 (.75), #80485 (.50), #80429S* (.75)
UH Ed Assoc I, P03, #80464 (.20)
UH Pub Spec I, P05, #80109 (.25)

Clerk-Typist II, SR 08, #35206

CHART UPDATED

DATE SEP 1986

CHART UPDATED

DATE SEP 1986