

University of Hawaii  
Kaplan Community College  
Office of the Provost

Position Organization Chart

Chart II

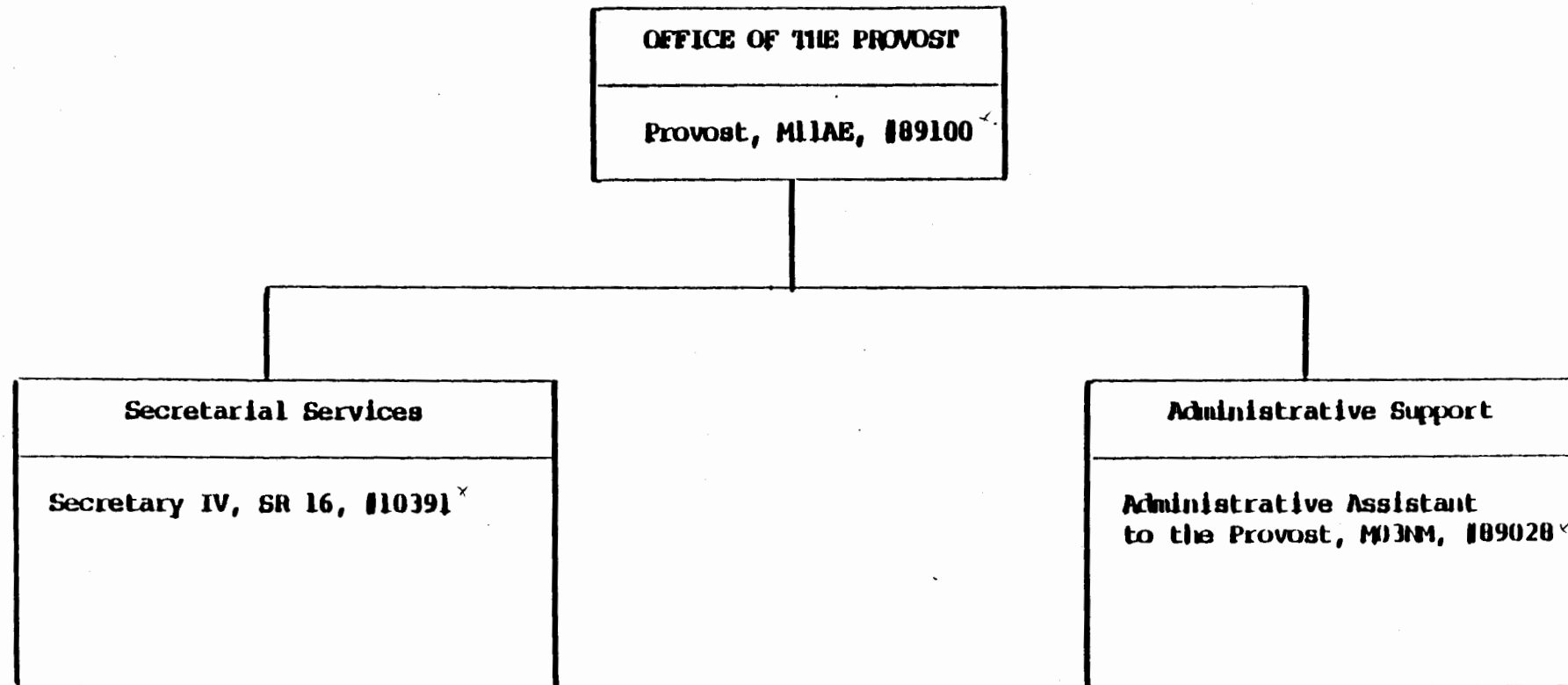


CHART UPDATED

DATE OCT 1987

Approved by:

*Jay L. Iwamoto*

Title:

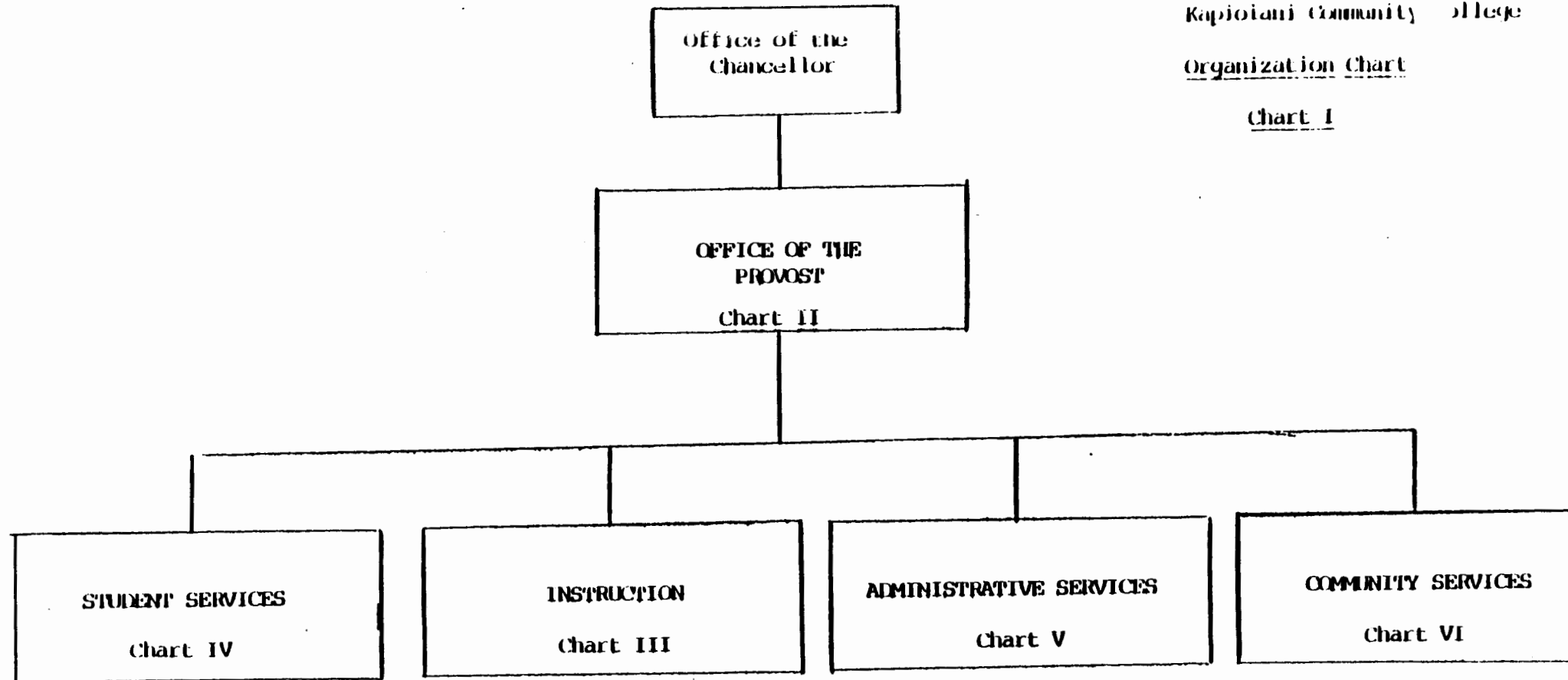
Chancellor for Community Colleges

Date:

12/19/86

Organization Chart

Chart I



**CHART UPDATED**

DATE OCT 1987

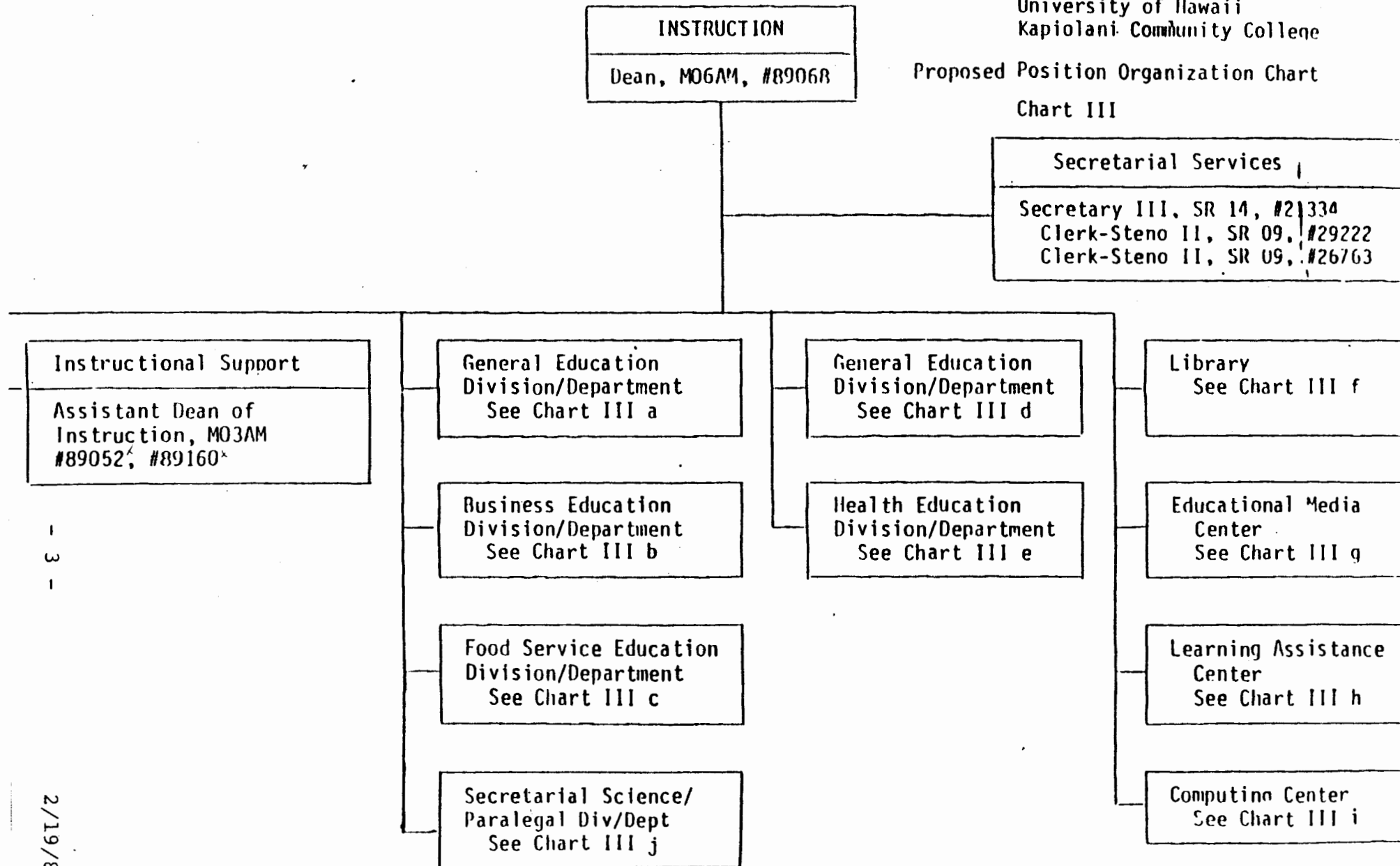
Approved by: Jayce L. Teunade

Title: Chancellor for Community Colleges

Date: 12/19/86

Proposed Position Organization Chart

Chart III



2/19/88

APPROVED

*Albert J. Simone*

Albert J. Simone, President

MAY - 3 1988

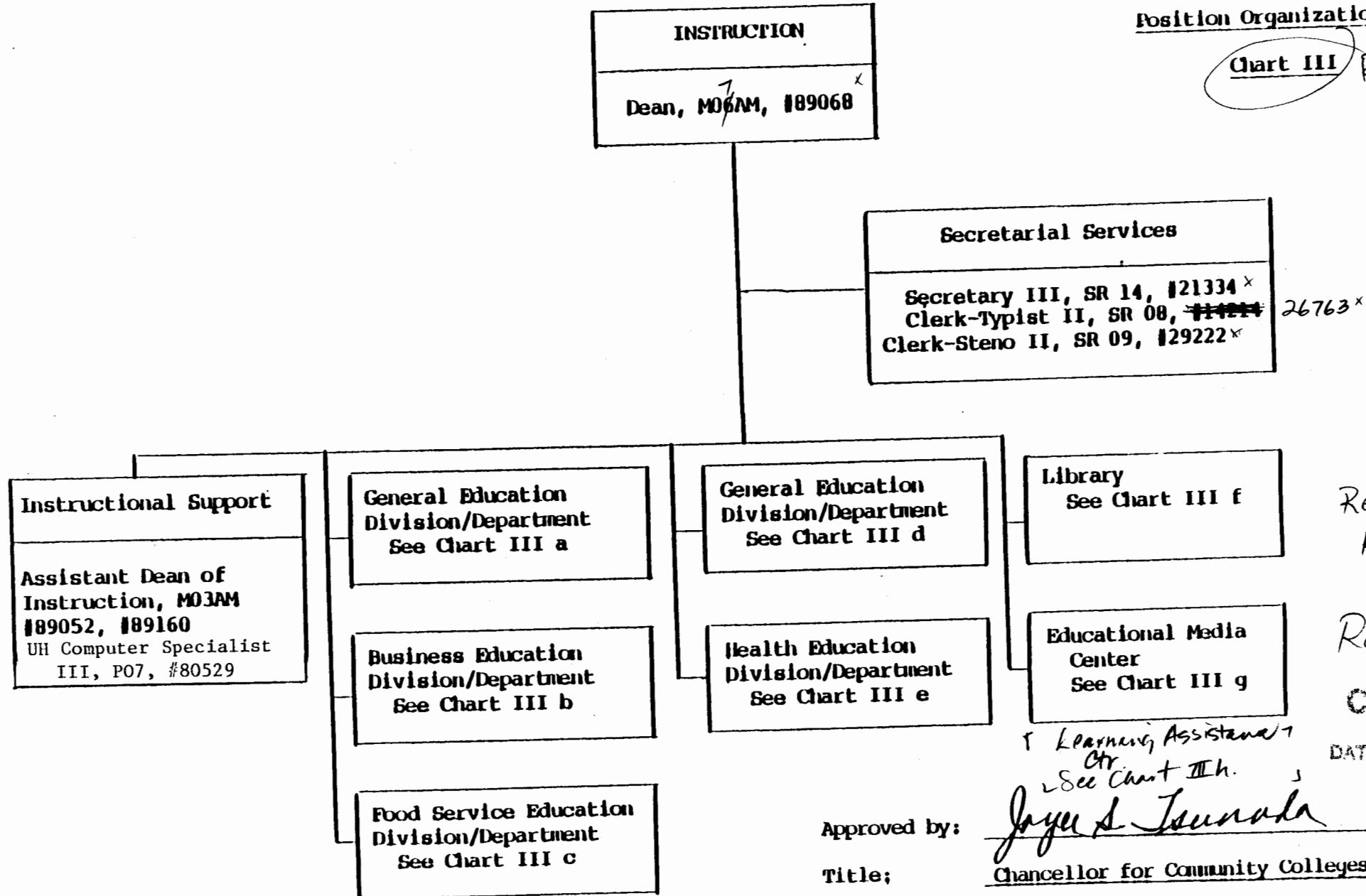
APPROVED

State of Hawaii  
University of Hawaii  
Kaplan Community College  
Instruction

Position Organization Chart

Chart III

Revised



Revised due to  
Reorg. app'd 5/3/88

Revised, 8/88

CHART UPDATE

DATE OCT 1987

Approved by:

Title:

Date:

Learning Assistant  
Ctr.  
See Chart III h.

Joyce A. Tsuruda

Chancellor for Community Colleges

12/19/86

Computing Center  
See Chart III i

See Sci. Paralegal  
Division/Dept.  
See Chart III j

State of Hawaii  
University of Hawaii  
Kapiolani Community College  
Instruction

Position Organization Chart

Chart III a

General Education Division/Department	
<u>General Education</u>	
Social Science Chairperson, # _____ *	Total 11
Instructors	Total (10.00)
Full-time: #83745 <sup>x</sup> , #84972 <sup>x</sup> , #84973 <sup>x</sup> , #83642 <sup>x</sup> , #82152 <sup>x</sup> , #82706 <sup>x</sup> , #82935 <sup>x</sup> , #83492 <sup>x</sup> , #83560 <sup>x</sup> , #87403 <sup>x</sup> , 86599	
Language Arts Chairperson, # _____ *	Total 18
Instructors	Total (14.00)
Full-time: #83559 <sup>x</sup> , #82178 <sup>x</sup> , #83783 <sup>x</sup> , #83903 <sup>x</sup> , #82232 <sup>x</sup> , #82555 <sup>x</sup> , #82776 <sup>x</sup> , #83308 <sup>x</sup> , #83447 <sup>x</sup> , #83870 <sup>x</sup> , #84327 <sup>x</sup> , #84409 <sup>x</sup> , #83795 <sup>x</sup> , #83123 <sup>x</sup> , 86596, 86594, 86595, 86604	
Paralegal Program Chairperson, # _____ *	Total (1.00)
Instructors	
Full-time: #83360 <sup>x</sup>	
General Education, Clerical Staff**	
Secretary II, SR 12, #22313 <sup>x</sup>	
Clerk-Typist II, SR 08, #26658 <sup>x</sup> , #22310 <sup>x</sup>	
<del>Clerk-Stere II, SR 09, #26763</del> transfd. to Dean's Off	

\* Approp Temp. - in count ← per Les.  
? 34826 Clerk Stereo II -  
Johnna Vegas

per Les. to be added to BJ table.

Revised, 8/88  
CHART UPDATED

DATE OCT 1987

\*Chairperson is appointed from among instructional positions within department.

\*\*Secretarial and Clerical staff serves all four General Education Departments--Social Science, Language Arts, Mathematics/Sciences, and Humanities.

State of Hawaii  
University of Hawaii  
Kapiolani Community College  
Instruction

Position Organization Chart

Chart III b

Business Education Division/Department	
<u>Business Education</u>	
Accounting/Data Processing	
Chairperson, # _____ *	
Instructors	Total <sup>12</sup> (10.00)
Full-time: #82026 <sup>x</sup> , #82066 <sup>x</sup> , #82728 <sup>x</sup> , #82931 <sup>x</sup> , #82795 <sup>x</sup> , #83221 <sup>x</sup> , #84337 <sup>x</sup> , #82503 <sup>x</sup> , #84882 <sup>x</sup> , #83901 <sup>x</sup> , 86591, 86598	
Business Administration	
Chairperson, # _____ *	
Instructors	Total (7.00)
Full-time: #82031 <sup>x</sup> , #82218 <sup>x</sup> , #82231 <sup>x</sup> , #82429 <sup>x</sup> , #82389 <sup>x</sup> , #84150 <sup>x</sup> , #84369 <sup>x</sup>	
Secretarial Science	
Chairperson, # _____ *	
Instructors	Total (9.00)
Full-time: #82348, #82380, #82876, #83071, #83734, #83771, #84072, #84223, #84370	
Business Education, Clerical Staff	
Secretary II, SR 12, #22312 <sup>x</sup>	
<del>Clerk-Typist II, SR 08, #18092</del> transfd to Secretarial/Paralegal Education. Revised, 8/88	

CHART UPDATED

DATE OCT 1987

\*Chairperson is appointed from among instructional positions within department.

State of Hawaii  
University of Hawaii  
Kapiolani Community College  
Instruction

Position Organization Chart

Chart III c

Food Service and Hospitality Education Division/Department

Food Service and Hospitality Education

Chairperson, # \_\_\_\_\_ \*

Instructors

Full-time: #82540<sup>x</sup>, #82970<sup>x</sup>, #83225<sup>x</sup>, #83460<sup>x</sup>, #83684<sup>x</sup>,  
#84091<sup>x</sup>, #84103<sup>x</sup>, #84304<sup>x</sup>, #84539<sup>x</sup>, #82683<sup>x</sup>,  
#82467<sup>x</sup>, #83133<sup>x</sup>, 86597,  
86670

Total <sup>14</sup> (12.00)

or 85439?  
type to  
corrected

Food Service, Clerical Staff  
Secretary II, SR 12, #16962<sup>x</sup>  
Cook III, WB 08, #22318 (w)<sup>x</sup>  
Snack Bar Cashier, SR 06, #22319<sup>x</sup> (w)  
Clerk-Typist II, SR 08, #29010<sup>x</sup> (w)  
Cafeteria Helper, WB 02, #32863 (w)<sup>x</sup>

Revised, 8/88

CHART UPDATED

DATE OCT 1987

\*Chairperson is appointed from among instructional positions within department.

(w) Represents positions funded by the Food Service Revolving Fund.

Position Organization Chart

Chart III d

General Education Division/Department

General Education

Mathematics/Sciences

Chairperson, # \_\_\_\_\_ \* 17  
Instructors Total (13.00)

Full-time: #82492<sup>x</sup>, #82981<sup>x</sup>, #83974<sup>x</sup>, #84458<sup>x</sup>, #82394<sup>x</sup>,  
#83096<sup>x</sup>, #83262<sup>x</sup>, #83688<sup>x</sup>, #83733<sup>x</sup>, #83357<sup>x</sup>,  
#83939<sup>x</sup>, #87401<sup>x</sup>, #82910<sup>x</sup>, 86600, 86592,  
86593, 86606

will be added to BS table w/ next update. This is an official position.

Humanities

Chairperson, # \_\_\_\_\_ \* 3  
Instructors Total (12.00)

Full-time: #84971<sup>x</sup>, #83094<sup>x</sup>, #82631<sup>x</sup>, #82925<sup>x</sup>, #83809<sup>x</sup>,  
#84974<sup>x</sup>, #82607<sup>x</sup>, #84470<sup>x</sup>, #82052<sup>x</sup>, #82983<sup>x</sup>,  
#87402<sup>x</sup>, #87404<sup>x</sup>, 86602

Revised 8/88  
CHART UPDATED  
DATE OCT 1987

\*Chairperson is appointed from among instructional positions within department.



Position Organization Chart

Chart III e

Health Education Division/Department	
<u>Health Education</u>	
Allied Health Chairperson, # _____ *	
Instructors	Total (11.10)
Full-Time: #84326 <sup>x</sup> , #83310 <sup>x</sup> , #83667 <sup>x</sup> , #82121 <sup>x</sup> , #82405 <sup>x</sup> , #82576 <sup>x</sup> , #83321 <sup>x</sup> , #82162 <sup>x</sup> , #85821 <sup>x</sup> , #86385 <sup>x</sup> , #86384 <sup>x</sup>	
Part-Time: #87052 (.10) <sup>x</sup>	87052 listed as 007.7 S/B 10% on BJ- w/ update.
<u>Nursing</u>	
Chairperson, # _____ *	
Instructors	Total (7.00)
Full-Time: #82064 <sup>x</sup> , #82513 <sup>x</sup> , #84487 <sup>x</sup> , #84629 <sup>x</sup> , #84655 <sup>x</sup> , #82244 <sup>x</sup> , 99708F, 99709F, 99710F	official pos- to be added in next update
Part-Time: #84308 (.50) <sup>x</sup> , #84308A <sup>x</sup> (.50)	
<u>Health Education, Clerical Staff</u>	
Secretary II, SR-12, #18093 <sup>x</sup>	
Clerk-Steno II, SR-09, #32952 <sup>x</sup>	

OK as is

to be deleted fr BJ  
? 82839- .10 Carl Hallenberg  
86355 .10 Christine Lukasi (actually in 87052)  
to be deleted fr BJ

CHART UPDATED

DATE OCT 1987

\*Chairperson is appointed from among instructional positions within department.

State of Hawaii  
University of Hawaii  
Kapiolani Community College  
Instruction

Position Organization Chart

Chart III f

Library	
Unit Head, #	
<del>Instructor III</del> (Librarian), #84185 <sup>^</sup>	
Instructor <sup>III</sup> <del>II</del> (Librarian), #84438 <sup>x</sup>	
Instructor II (Assistant Librarian), #83504 <sup>x</sup>	86629
Library Assistant IV, SR 09, #18087 <sup>x</sup>	#22311 <sup>t</sup> , #26762 <sup>x</sup>
Library Tech V, SR 11, 39859, 39796	

Revised, 8/88

CHART UPDATED

DATE OCT 1987

State of Hawaii  
University of Hawaii  
Kapiolani Community College  
Instruction

Position Organization Chart

Chart III g

Educational Media Center	
<i>Unit Head/Chairperson, # _____ *</i>	
Instructor V ( <del>Director of Educational Media</del> ), C5, #82386 <sup>x</sup> , 87603 <sup>x</sup>	
<i>UH Computer Spec II, P05, #98721F</i>	
UHI Educational Specialist II, P06, #80694 <sup>x</sup>	
UHI Electronics Technician II, P09, #80034 <sup>x</sup>	
UHI Electronics Technician I, P06, #81277 <sup>x</sup>	
Instructor V ( <del>Media Instructional Development Specialist</del> ), <i>Engineer I, P07, #98720F</i>	
<del>C5, #87603</del>	
Clerk-Steno III, SR 11, #21321 <sup>x</sup>	
 UH Graphic Artist II, P05, 81060	
Offset Press Operator II, WB08, 39797	

*Revised, 8/88*

CHART UPDATED

DATE OCT 1987

*\* appointed from among instructional pos's w/i unit/dept.*

State of Hawaii  
University of Hawaii  
Kapiolani Community College  
Instruction

Position Organization Chart

Chart III h

Learning Assistance Center	
Unit Head/Chairperson, # _____ *	
UH Educational Specialist II, P06, #81164	
UH Educational Specialist II, P06, #82263 (.50)	
Clerk-Typist II, SR 08, #14214 *	

\*Unit Head/Chairperson is appointed from among instructional positions at the College.

New Chart -  
8/88 update

State of Hawaii  
University of Hawaii  
Kapiolani Community College  
Instruction

Position Organization Chart

Chart III i

Computing Center

UH Ed Spec II, P06, 98713F

New Chart  
8/88 update

State of Hawaii  
University of Hawaii  
Kapiolani Community College  
Instruction

Position Organization Chart

Chart III j

Secretarial Science and Paralegal Division/Department

Secretarial/Paralegal Education

Secretarial Science

Chairperson, # \_\_\_\_\_ \*

Instructors

Total (9.00)

Full-time: #82348<sup>x</sup>, #82380<sup>x</sup>, #82876<sup>x</sup>, #83071<sup>x</sup>, #83734<sup>x</sup>, #83771<sup>x</sup>, #84072<sup>x</sup>,

90% #84223<sup>x</sup>, #84370<sup>x</sup>

100% 5/8 100% BJ to be corrected, per Lcs

Paralegal Program

Chairperson, # \_\_\_\_\_ \*

Instructors

Total (1.00)

Full-time: #83360<sup>x</sup>

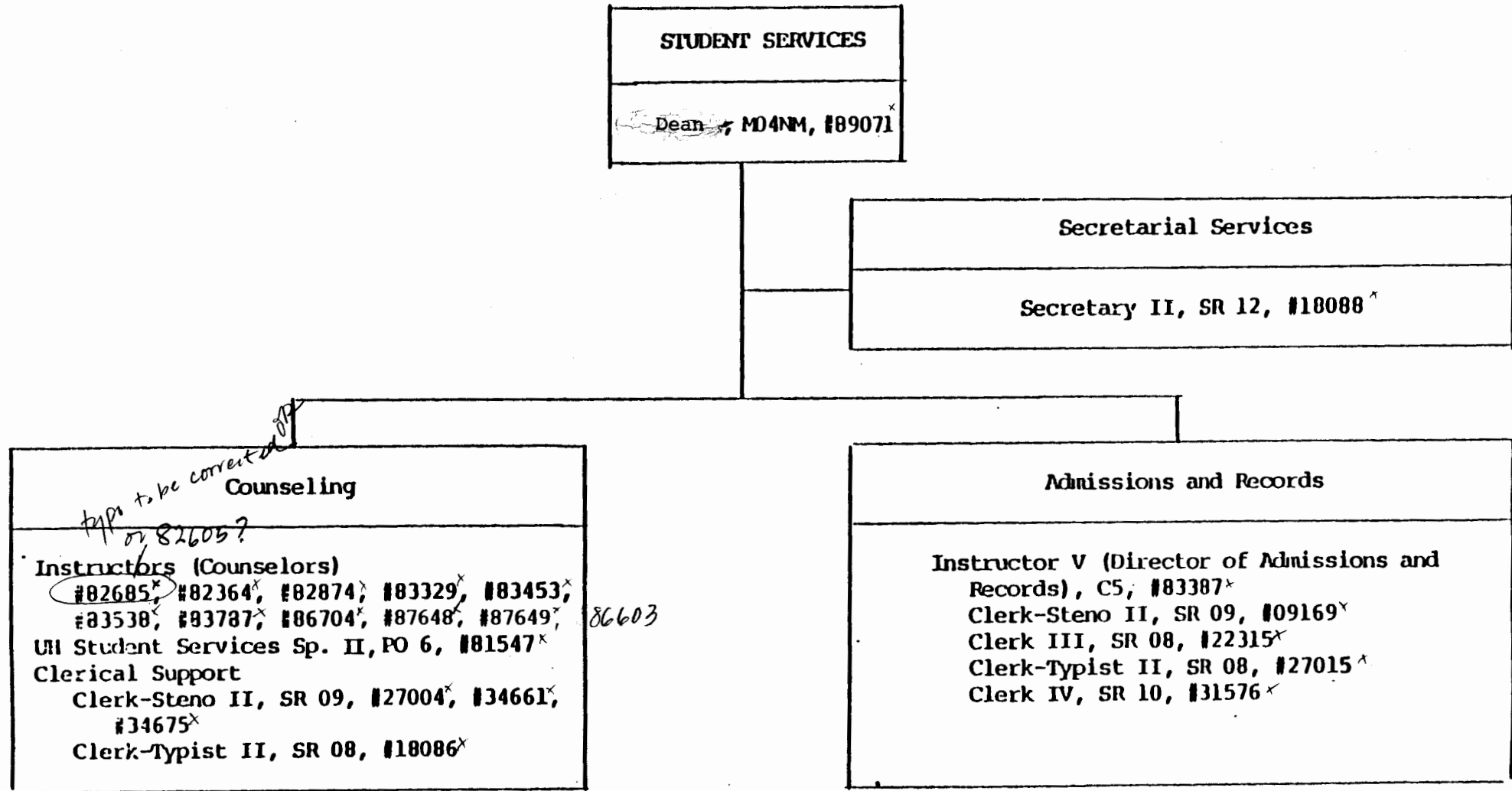
Secretarial/Paralegal Education, Clerical Staff  
Clerk-Typist II, SR 08, #18092\*

\*Chairperson is appointed from among instructional positions within department.

New Chart  
8/88 update

Position Organization Chart

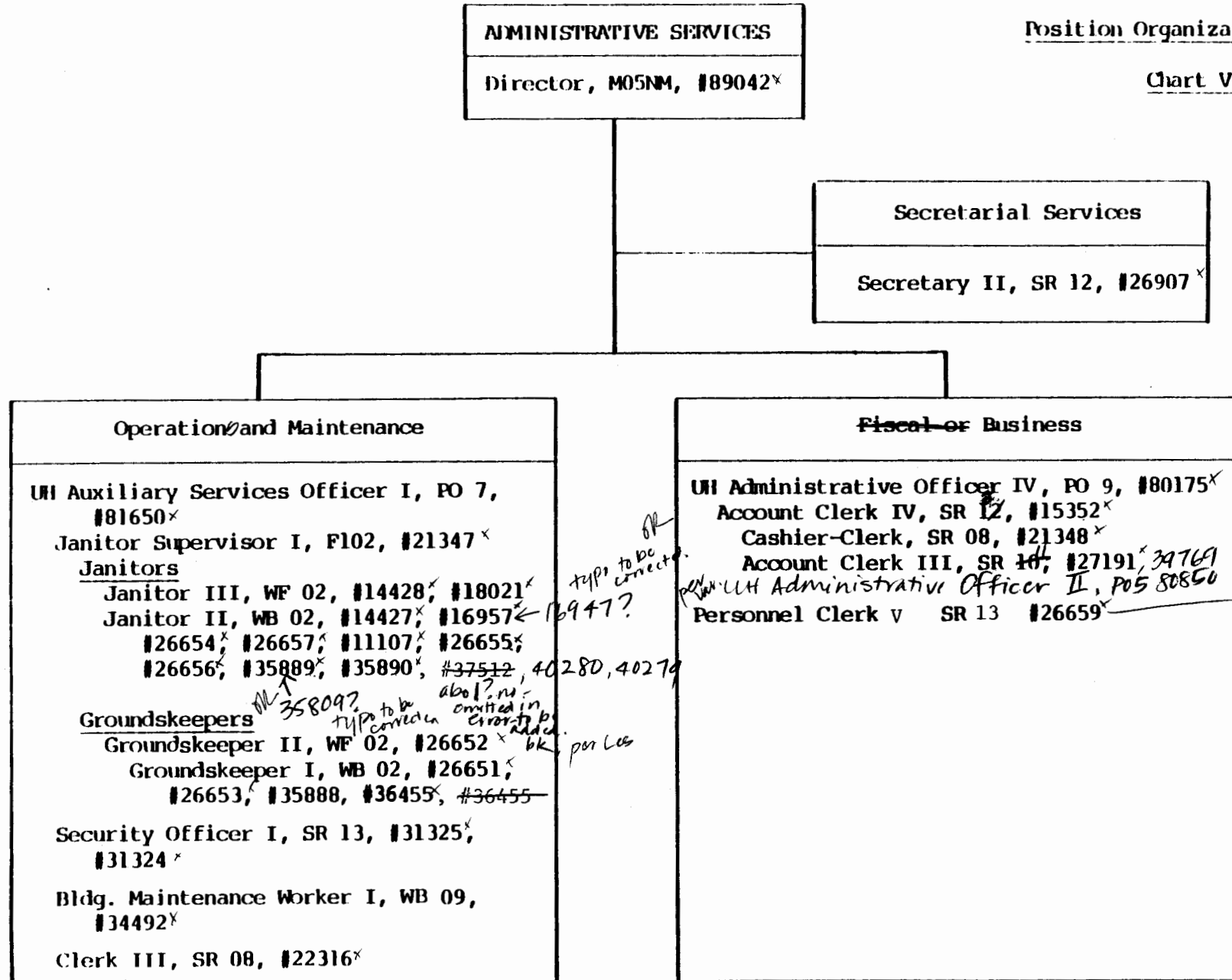
Chart IV



*Revised, 8/88*  
**CHART UPDATED**  
DATE OCT 1987

Position Organization Chart

Chart V



Personnel Office  
UH Personnel Officer,  
PO 7, 80874

**CHART UPDATED**

DATE OCT 1987

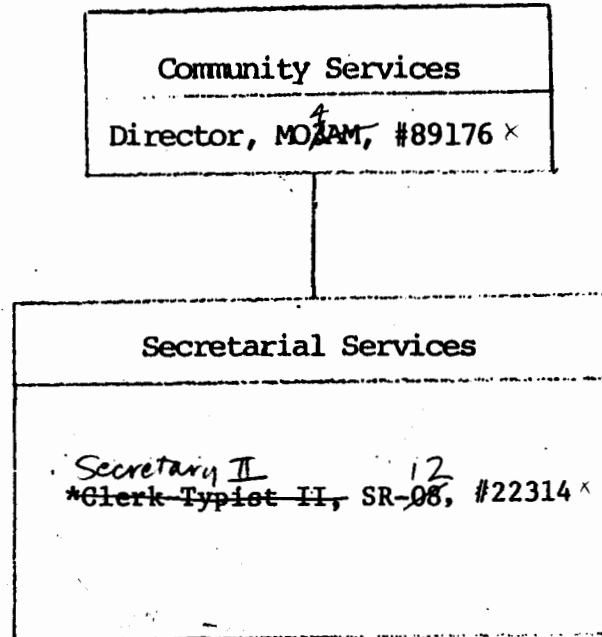
Revised.  
8/88



State of Hawaii  
University of Hawaii  
Kapiolani Community College  
Office of Community Services

Position Organization Chart

Chart VI



+ 12 spec fund new positions 5-332

Revised, 8/88

**CHART UPDATED**

DATE OCT 1987

\*Pending position variance and  
reclassification.

Approved by:

Joyce S. Iwama

Title:

Chancellor for Community Colleges

Date:

12/19/86